



Subscribe to updates from Chatham County GA

Email Address

Subscribe

Share Bulletin



Betz Creek Culvert Replacement Project on Penn Waller Road - Road Closure

Chatham County GA sent this bulletin at 05/05/2025 09:40 AM EDT

[View as a webpage](#) / [Share](#)



Chatham County Board of Commissioners
124 Bull Street, Savannah, GA 31401



Betz Creek Culvert Replacement Project on Penn Waller Road

For Immediate Release

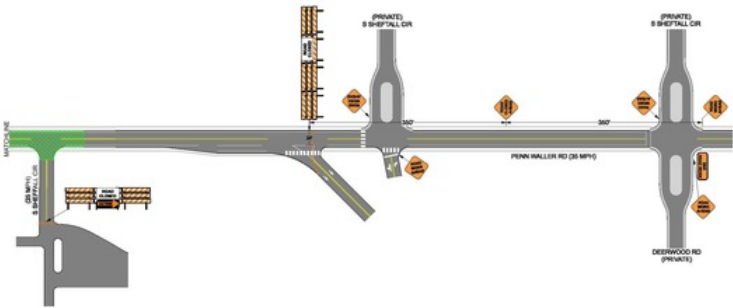
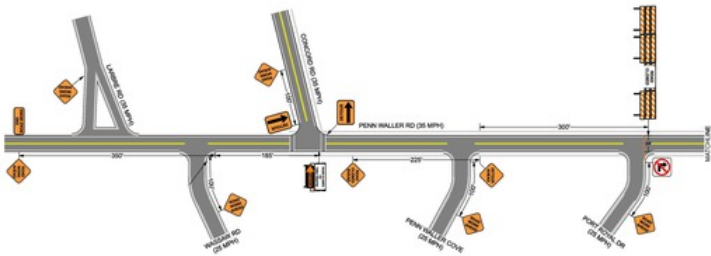
Chatham County, GA (May 5, 2025) - Chatham County has hired a contractor to replace the deteriorating box culvert on Penn Waller Road at Betz Creek. As part of the project, a new sidewalk will also be constructed to connect with the existing sidewalks along Penn Waller Road, improving pedestrian access in the area.

To complete the work safely and efficiently, Penn Waller Road will be closed to through traffic between Port Royal Drive and North Sheftall Circle for the duration of the project. The **road closure is scheduled to begin on May 12, 2025**, with the road expected to **reopen on August 1, 2025**. Detour signs will be installed to guide drivers around the closure according to the detour plan (see file or photos below).

For questions regarding the project or the road closure, please contact the Chatham County Department of Engineering at (912) 652-7800.

WHAT: Road closure of Penn Waller Road between Port Royal Drive and North Sheftall Circle
WHEN: May 12, 2025, planned to reopen on August 1, 2025

[Detour Plan for Penn Waller Road Closure](#)



###

Contact
Abby Murphy, CPC
Chatham County Public Information Office
Office: 912-652-7968
Email: ChathamPIO@chathamcounty.org
Sign up for our newsletters! [Click here](#)



Chatham County, Georgia

124 Bull Street, Suite 210, Savannah, GA 31401
chathamcountyga.gov | (912) 652-7175



[Manage Subscriptions](#) | [Unsubscribe](#) | [Help](#)

Powered by



[Privacy Policy](#) | [Cookie Statement](#) | [Help](#)