

Beat 1

Part I Incidents Last 28 Days

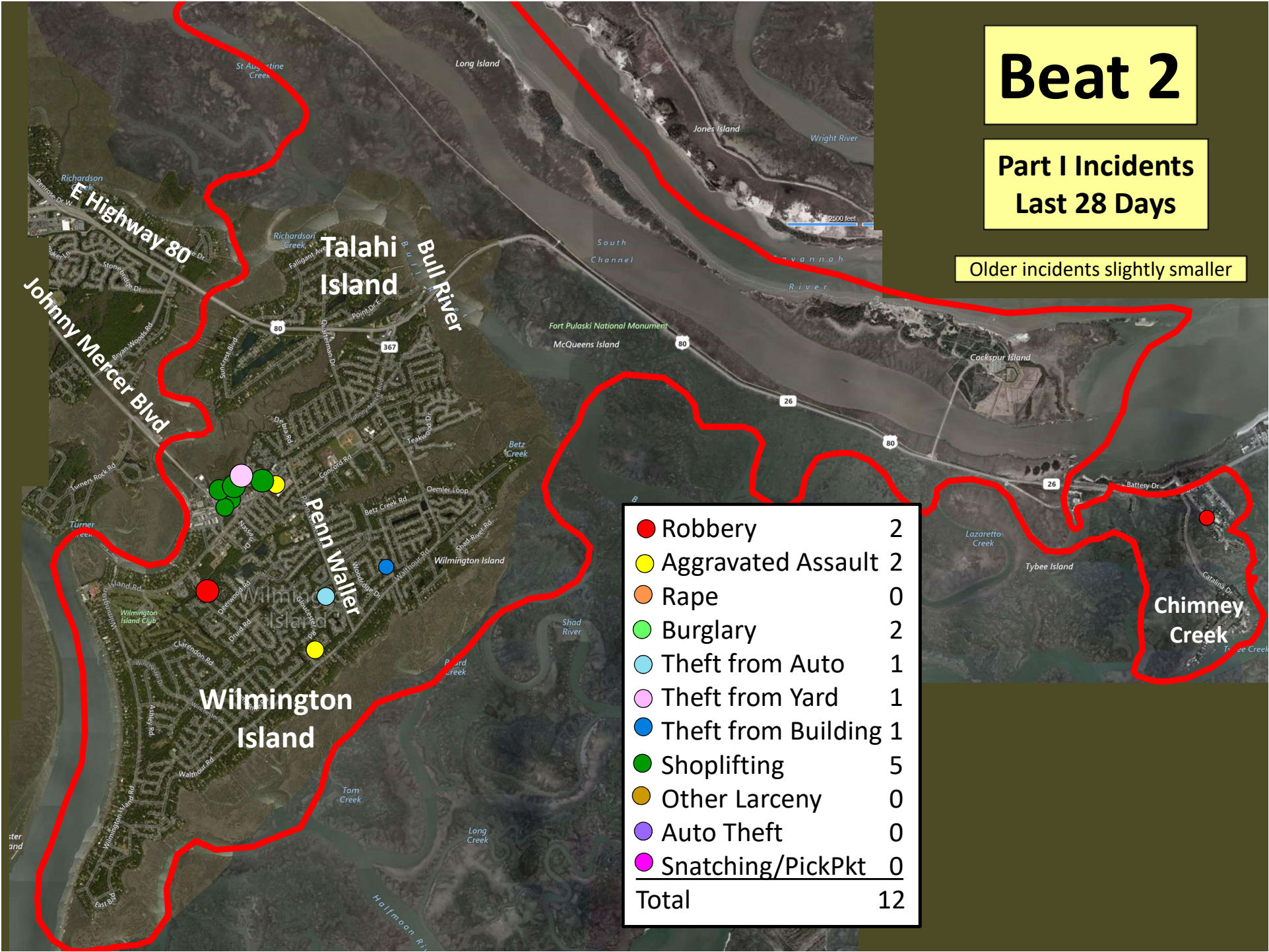
○ Arson	2
● Robbery	0
● Aggravated Assault	1
● Rape	0
● Burglary	0
● Theft from Auto	0
● Theft from Yard	2
● Theft from Building	0
● Shoplifting	3
● Other Larceny	0
● Auto Theft	2
● <u>Snatching/PickPkt</u>	<u>0</u>
Total	10

Older incidents slightly smaller

Beat 2

Part I Incidents Last 28 Days

Older incidents slightly smaller



The map displays the geographical area of Beat 2, which includes Talahi Island, Wilmington Island, and Chimney Creek. A red outline delineates the beat's boundary. Various roads and waterways are labeled, including E Highway 80, Johnny Mercer Blvd, Bull River, and the Savannah River. Incident locations are marked with colored dots: red for Robbery, yellow for Aggravated Assault, orange for Rape, green for Burglary, light blue for Theft from Auto, pink for Theft from Yard, dark blue for Theft from Building, dark green for Shoplifting, gold for Other Larceny, purple for Auto Theft, and magenta for Snatching/PickPkt. A legend table in the bottom right corner provides the count for each incident type.

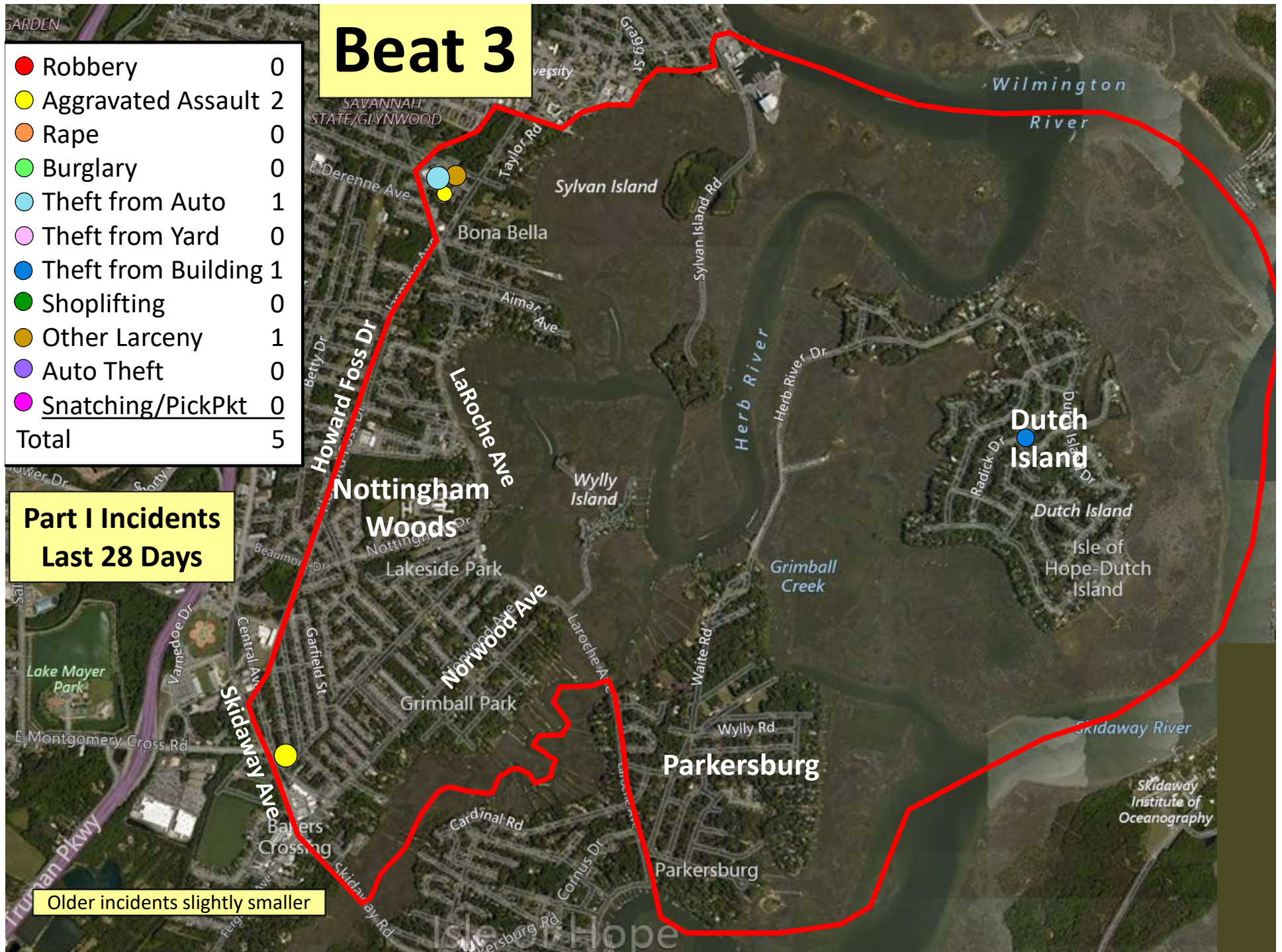
Robbery	2
Aggravated Assault	2
Rape	0
Burglary	2
Theft from Auto	1
Theft from Yard	1
Theft from Building	1
Shoplifting	5
Other Larceny	0
Auto Theft	0
Snatching/PickPkt	0
Total	12

Beat 3

● Robbery	0
● Aggravated Assault	2
● Rape	0
● Burglary	0
● Theft from Auto	1
● Theft from Yard	0
● Theft from Building	1
● Shoplifting	0
● Other Larceny	1
● Auto Theft	0
● Snatching/PickPkt	0
Total	5

Part I Incidents Last 28 Days

Older incidents slightly smaller

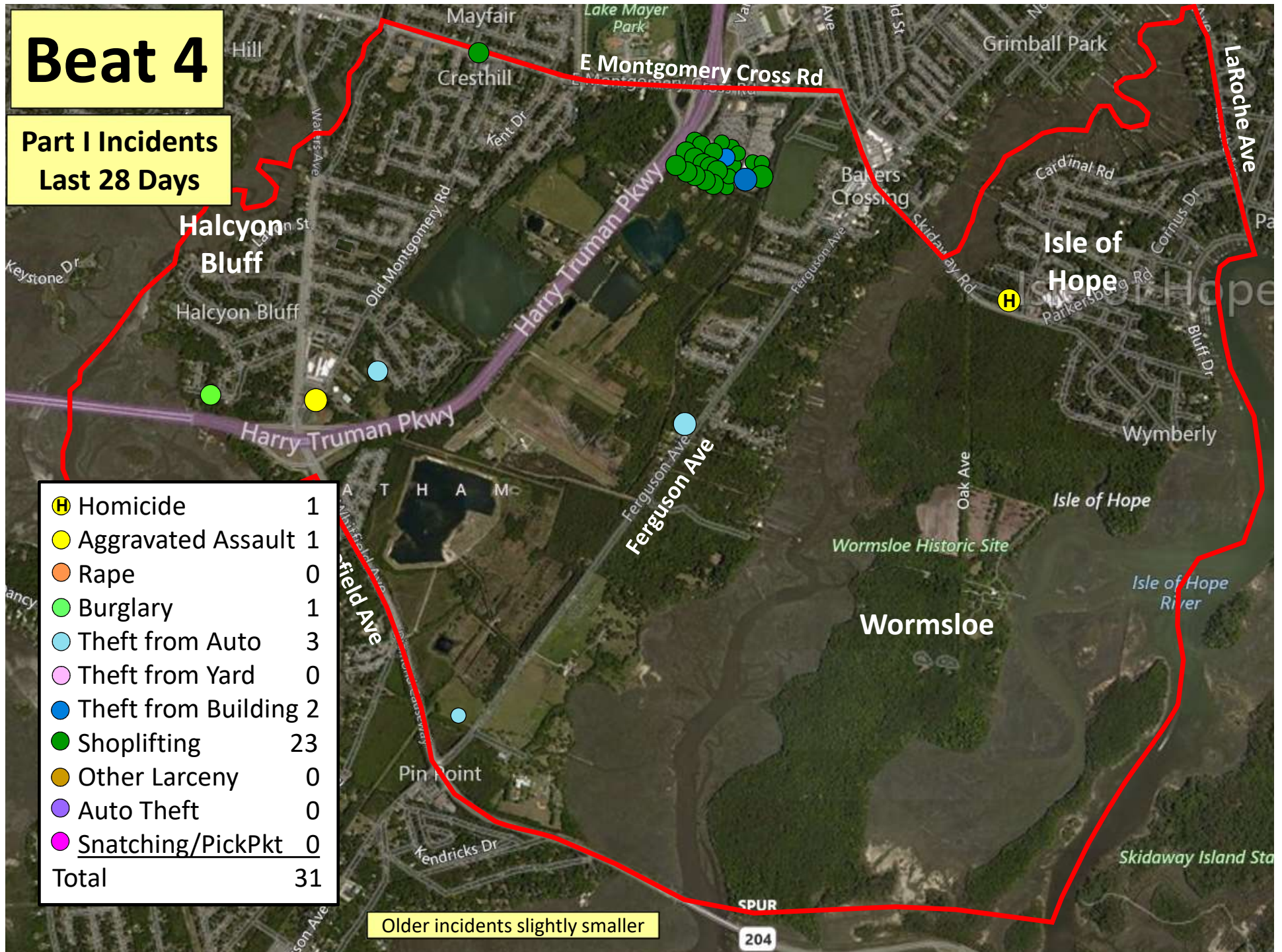


Beat 4

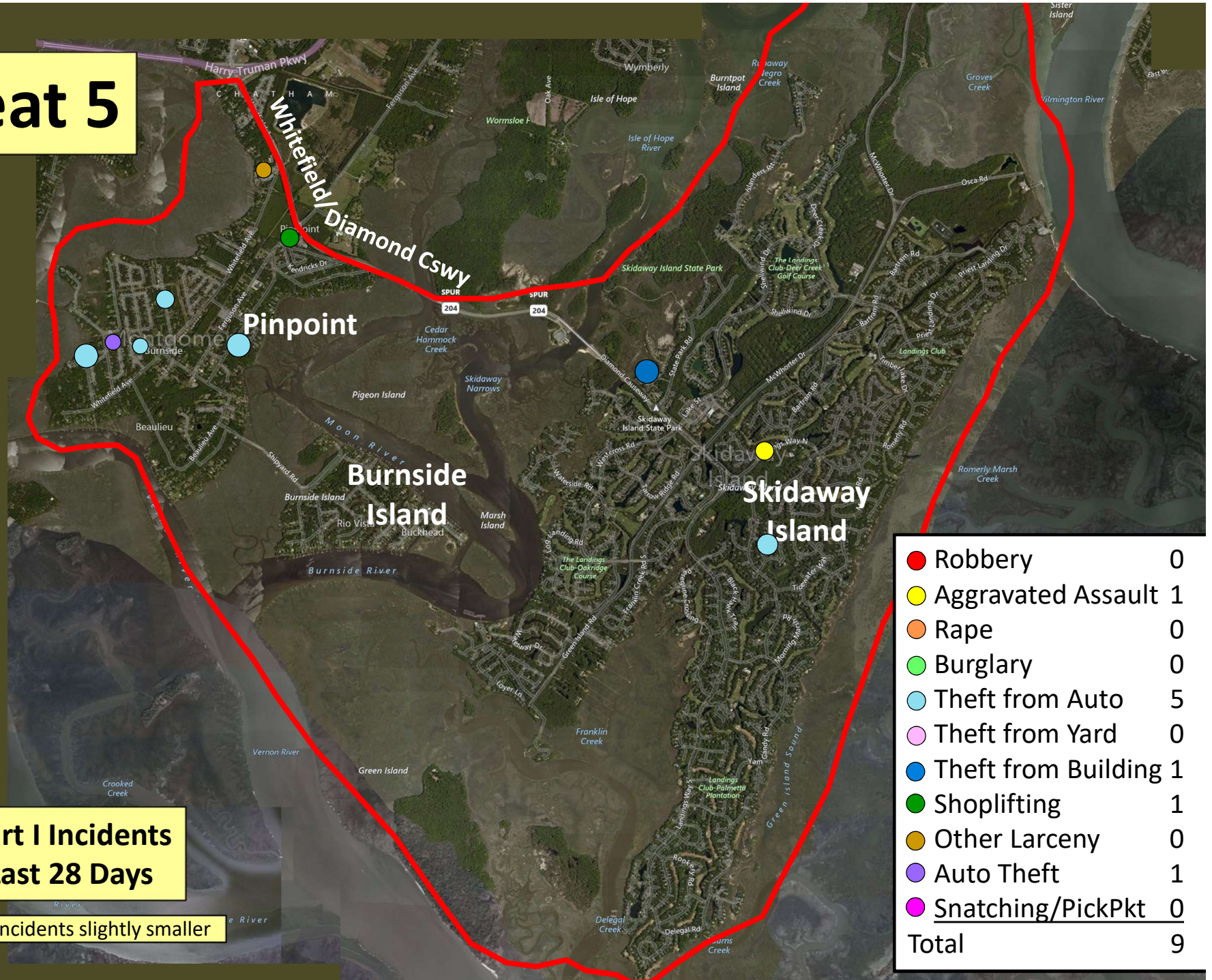
Part I Incidents Last 28 Days

Homicide	1
Aggravated Assault	1
Rape	0
Burglary	1
Theft from Auto	3
Theft from Yard	0
Theft from Building	2
Shoplifting	23
Other Larceny	0
Auto Theft	0
Snatching/PickPkt	0
Total	31

Older incidents slightly smaller



Beat 5



**Part I Incidents
Last 28 Days**

Older incidents slightly smaller

● Robbery	0
● Aggravated Assault	1
● Rape	0
● Burglary	0
● Theft from Auto	5
● Theft from Yard	0
● Theft from Building	1
● Shoplifting	1
● Other Larceny	0
● Auto Theft	1
● Snatching/PickPkt	0
Total	9

Beat 6

Part I Incidents
Last 28 Days

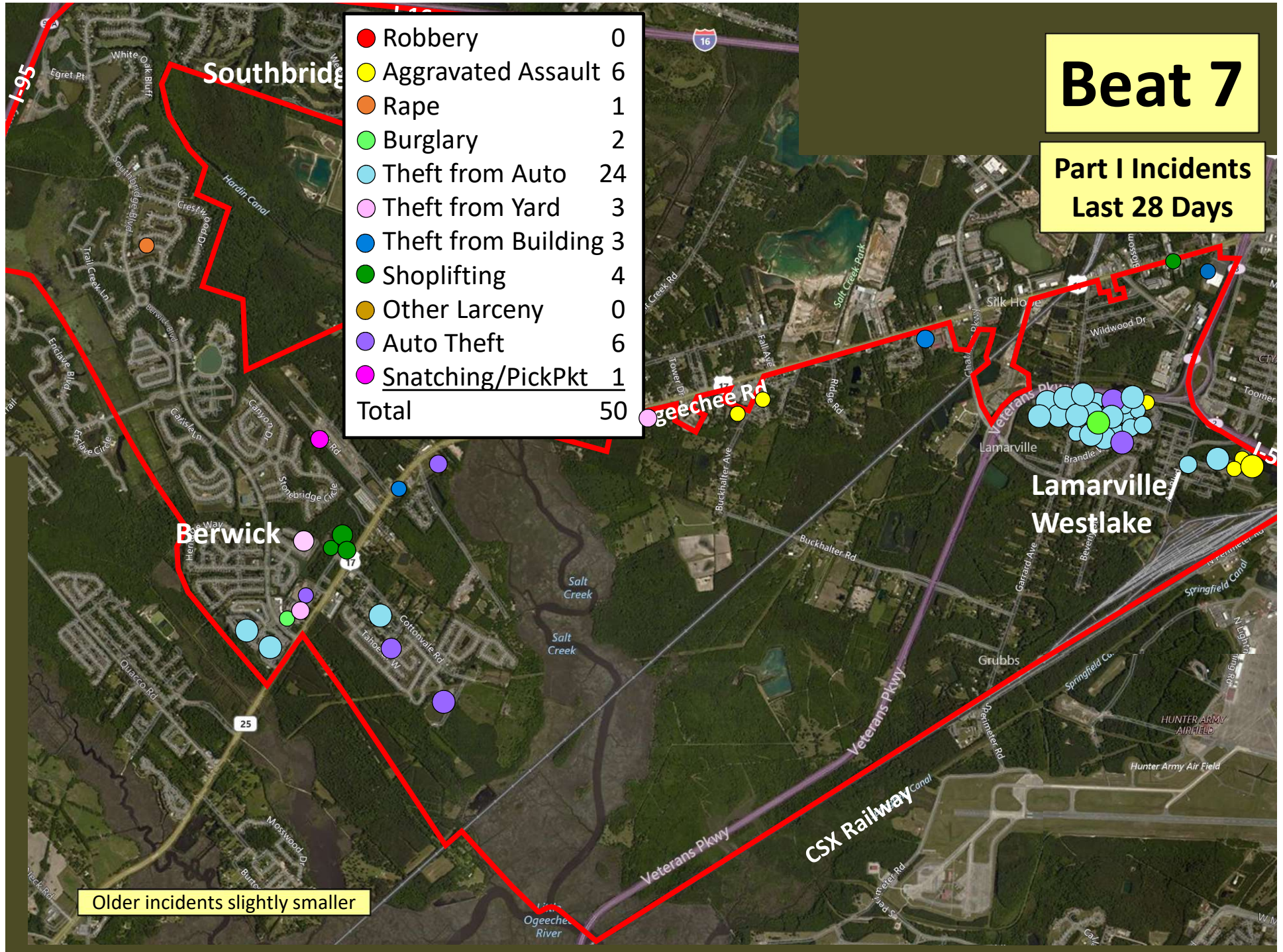
● Robbery	0
● Aggravated Assault	0
● Rape	0
● Burglary	0
● Theft from Auto	0
● Theft from Yard	0
● Theft from Building	0
● Shoplifting	0
● Other Larceny	1
● Auto Theft	0
● Snatching/PickPkt	0
Total	1

Older incidents slightly smaller

Beat 7

Part I Incidents
Last 28 Days

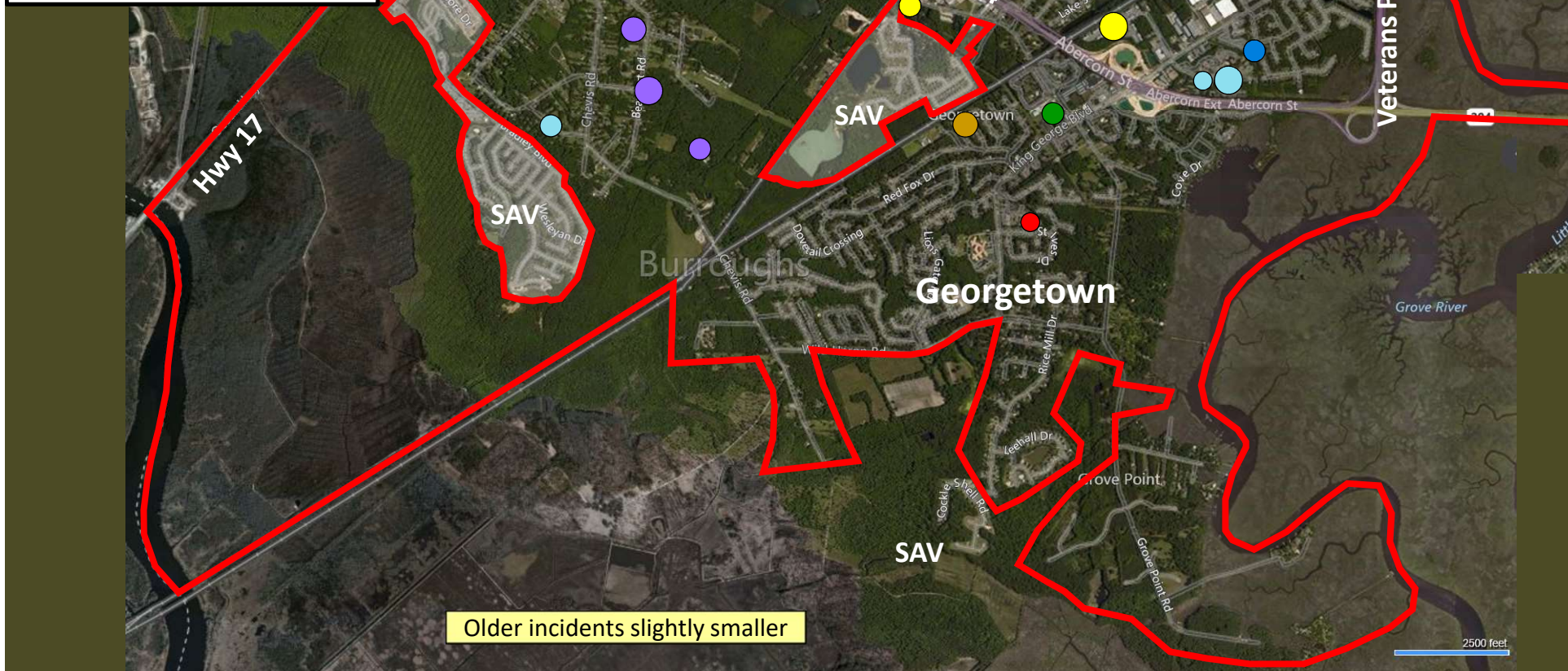
● Robbery	0
● Aggravated Assault	6
● Rape	1
● Burglary	2
● Theft from Auto	24
● Theft from Yard	3
● Theft from Building	3
● Shoplifting	4
● Other Larceny	0
● Auto Theft	6
● Snatching/PickPkt	1
Total	50



● Robbery	1
● Aggravated Assault	2
● Rape	0
● Burglary	2
● Theft from Auto	10
● Theft from Yard	1
● Theft from Bldg	1
● Shoplifting	11
● Other Larceny	1
● Auto Theft	5
Total	34

**Part I Incidents
Last 28 Days**

Beat 8



Older incidents slightly smaller

Beat 9

Part I Incidents Last 28 Days

Note: The
Enclave
subdivision
is now in
Beat 7

● Robbery	1
● Aggravated Assault	3
● Rape	1
● Burglary	3
● Theft from Auto	7
● Theft from Yard	7
● Theft from Building	1
● Shoplifting	0
● Other Larceny	0
● Auto Theft	3
● Snatching/PickPkt	0
Total	26



Older incidents slightly smaller