

Beat 1

Part I Incidents Last 28 Days

● Robbery	0
● Aggravated Assault	1
● Rape	0
● Burglary	2
● Theft from Auto	1
● Theft from Yard	1
● Theft from Building	1
● Shoplifting	2
● Other Larceny	0
● Auto Theft	1
● Snatching/PickPkt	0
Total	9

Older incidents slightly smaller

Beat 2

Part I Incidents Last 28 Days

Older incidents slightly smaller



The map displays the geographical area of Beat 2, which includes Talahi Island, Penn Waller, and Wilmington Island. A red outline delineates the beat's boundary. Various roads and waterways are labeled, including E Highway 80, Johnny Mercer Blvd, Bull River, and Chimney Creek. Incident locations are marked with colored dots: a red dot for Robbery, a yellow dot for Aggravated Assault, a light blue dot for Theft from Auto, a pink dot for Theft from Yard, a blue dot for Theft from Building, six green dots for Shoplifting, and a purple dot for Snatching/PickPkt. The legend table is positioned in the lower right quadrant of the map.

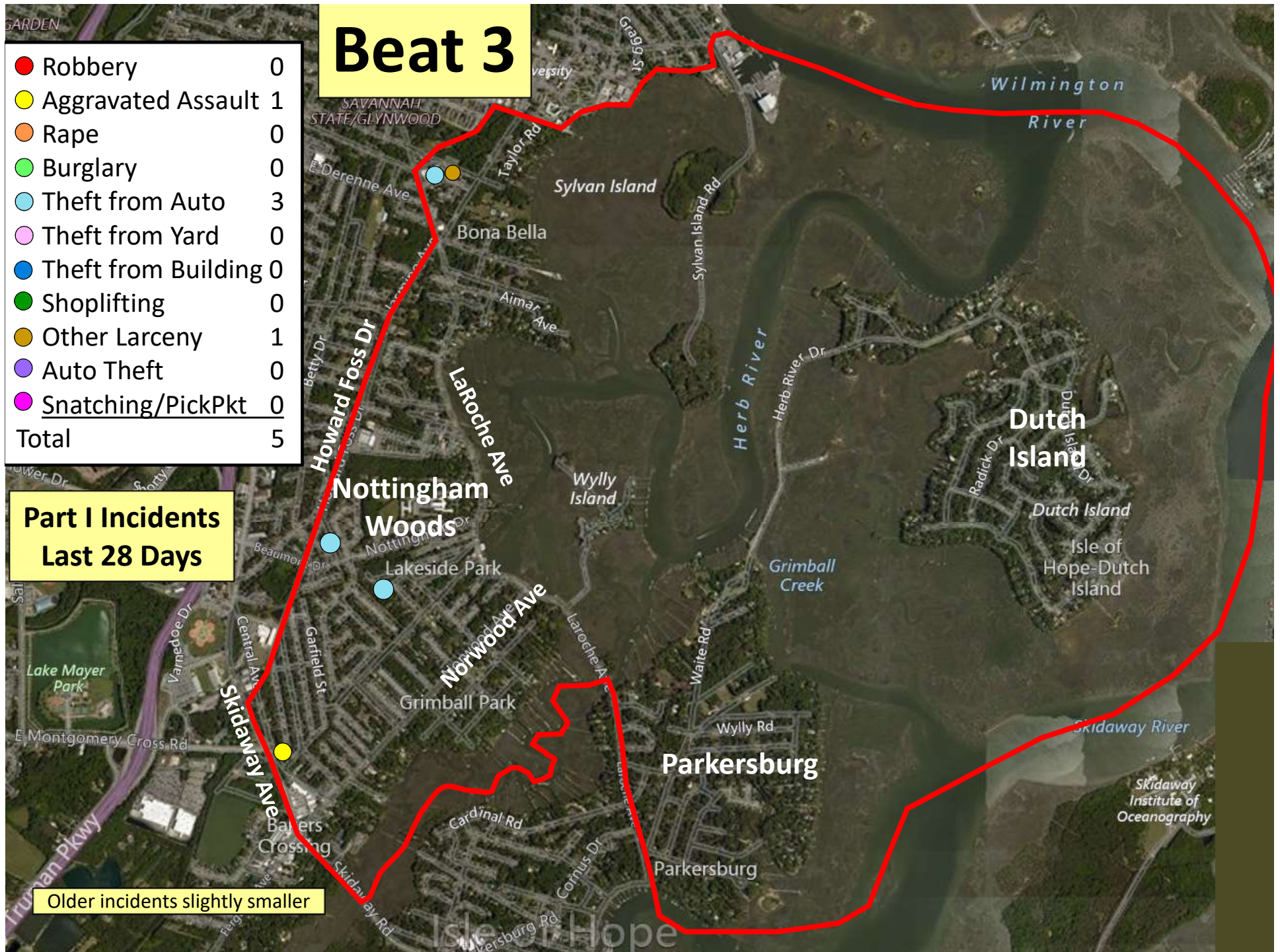
Robbery	1
Aggravated Assault	1
Rape	0
Burglary	0
Theft from Auto	1
Theft from Yard	1
Theft from Building	0
Shoplifting	6
Other Larceny	0
Auto Theft	0
Snatching/PickPkt	0
Total	10

Beat 3

● Robbery	0
● Aggravated Assault	1
● Rape	0
● Burglary	0
● Theft from Auto	3
● Theft from Yard	0
● Theft from Building	0
● Shoplifting	0
● Other Larceny	1
● Auto Theft	0
● Snatching/PickPkt	0
Total	5

Part I Incidents Last 28 Days

Older incidents slightly smaller

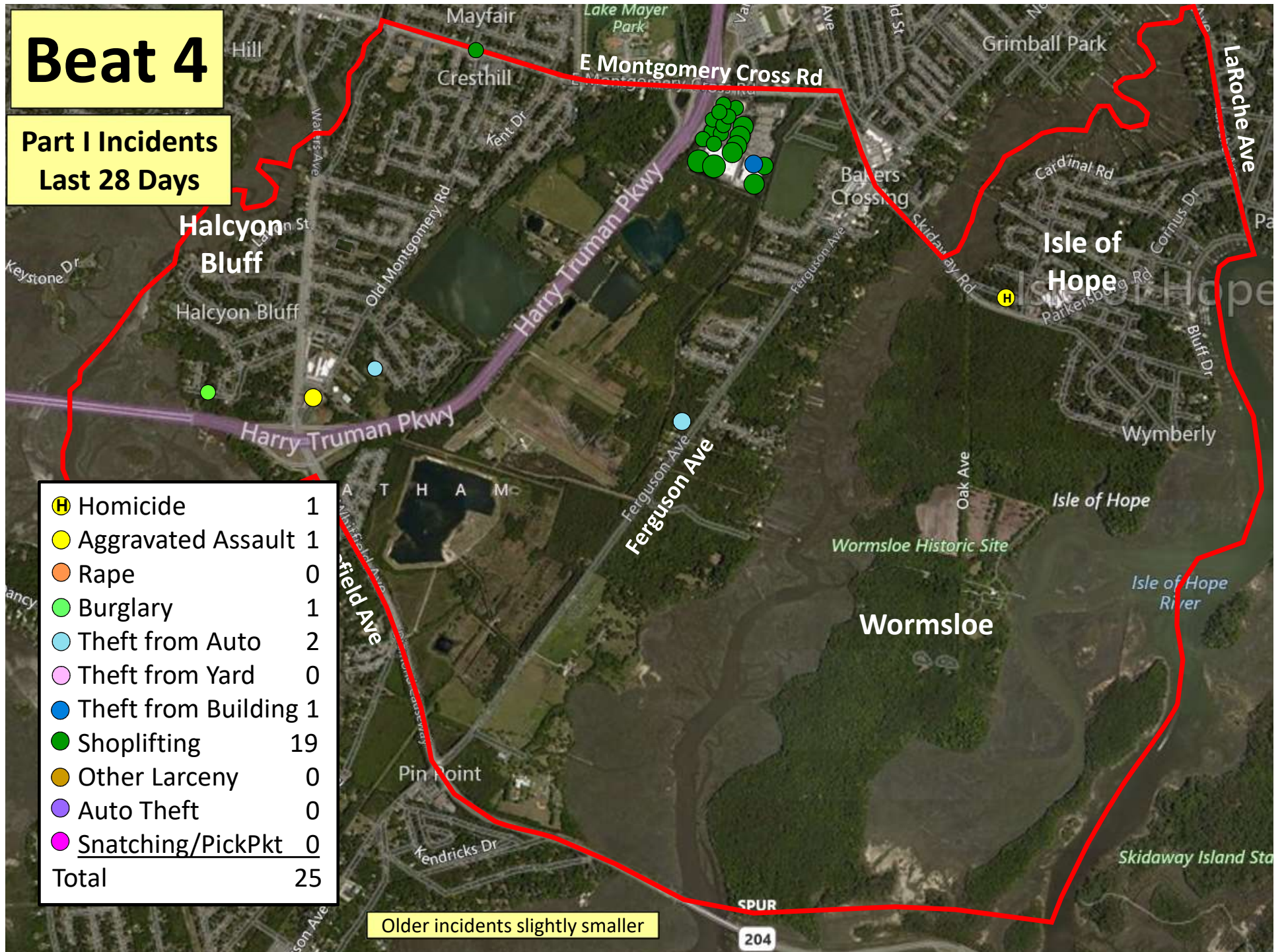


Beat 4

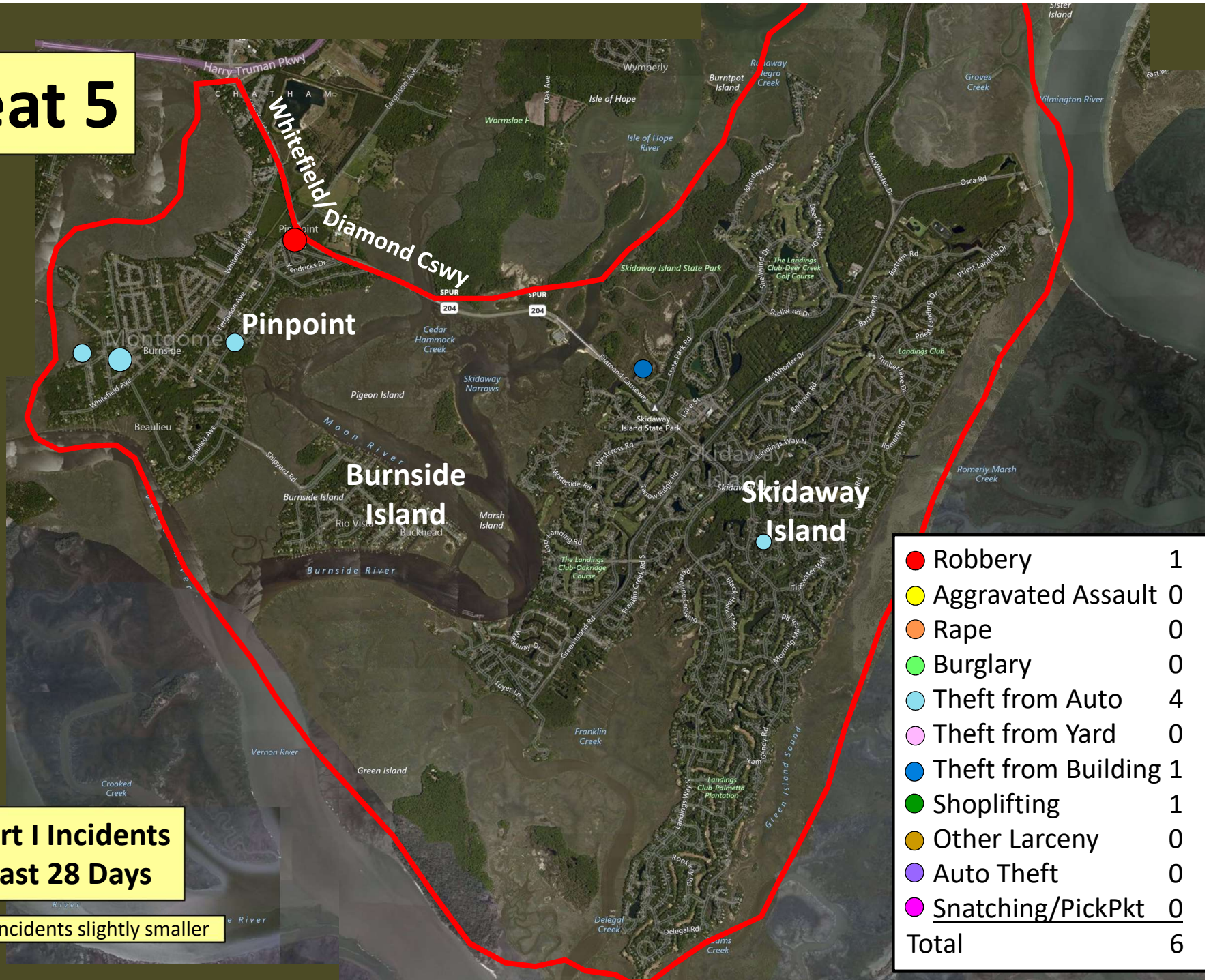
Part I Incidents Last 28 Days

Homicide	1
Aggravated Assault	1
Rape	0
Burglary	1
Theft from Auto	2
Theft from Yard	0
Theft from Building	1
Shoplifting	19
Other Larceny	0
Auto Theft	0
Snatching/PickPkt	0
Total	25

Older incidents slightly smaller



Beat 5



Part I Incidents
Last 28 Days

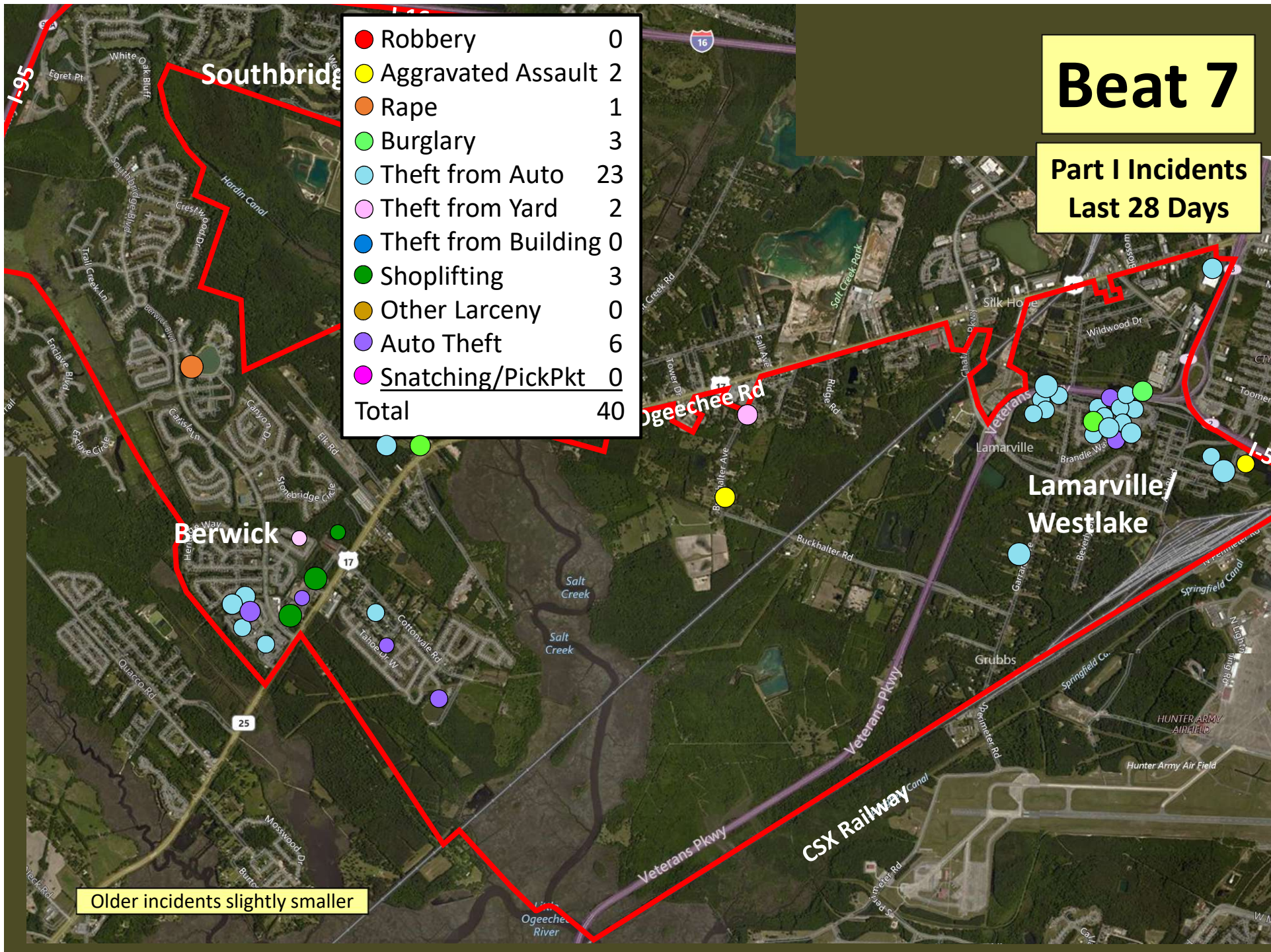
Older incidents slightly smaller

Beat 6

Part I Incidents
Last 28 Days

● Robbery	0
● Aggravated Assault	0
● Rape	0
● Burglary	0
● Theft from Auto	0
● Theft from Yard	0
● Theft from Building	0
● Shoplifting	0
● Other Larceny	0
● Auto Theft	0
● Snatching/PickPkt	0
Total	0

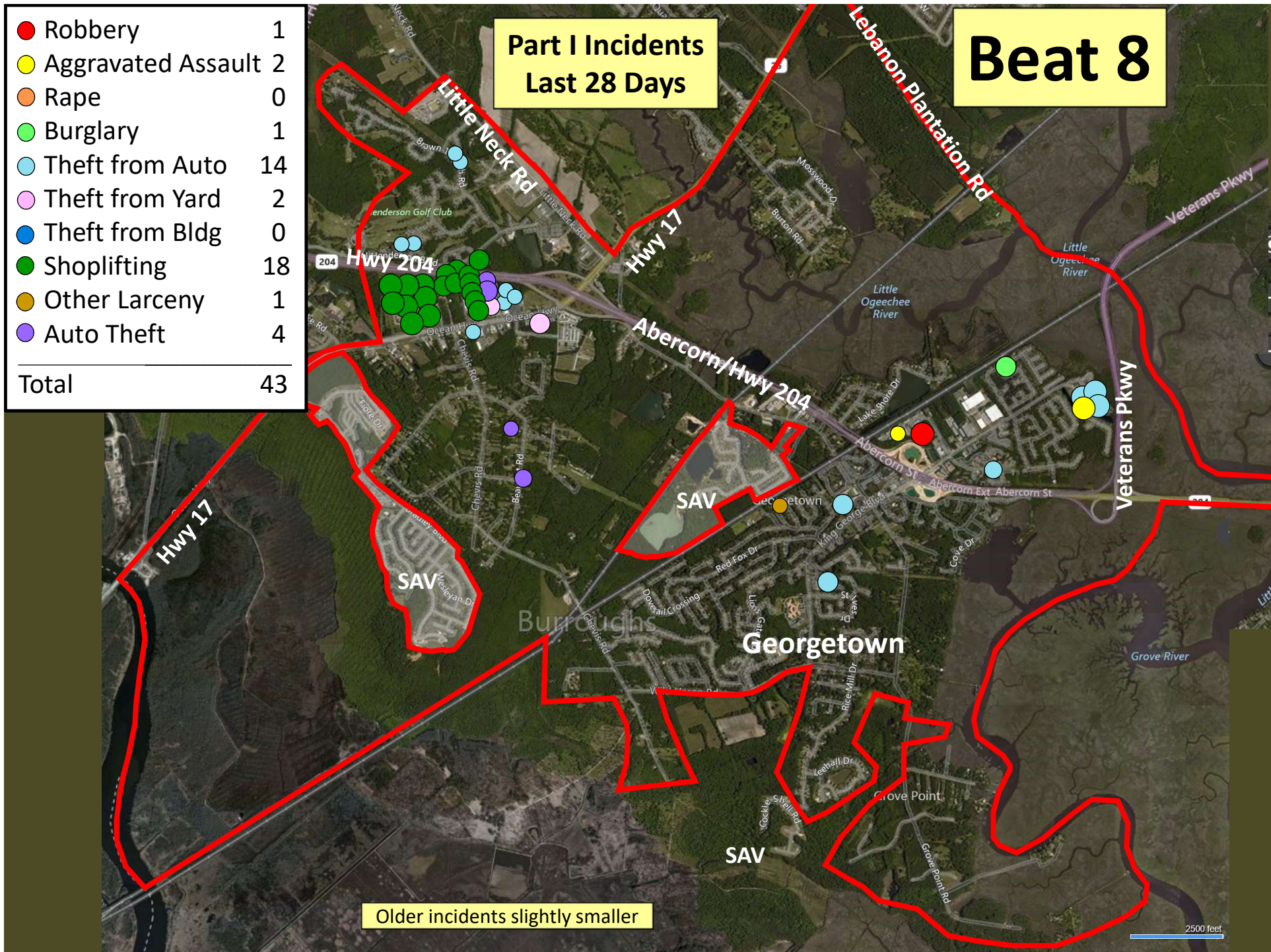
Older incidents slightly smaller



● Robbery	1
● Aggravated Assault	2
● Rape	0
● Burglary	1
● Theft from Auto	14
● Theft from Yard	2
● Theft from Bldg	0
● Shoplifting	18
● Other Larceny	1
● Auto Theft	4
Total	43

Part I Incidents Last 28 Days

Beat 8



Beat 9

Part I Incidents Last 28 Days

Note: The
Enclave
subdivision
is now in
Beat 7

● Robbery	0
● Aggravated Assault	6
● Rape	1
● Burglary	3
● Theft from Auto	9
● Theft from Yard	3
● Theft from Building	2
● Shoplifting	0
● Other Larceny	0
● Auto Theft	3
● Snatching/PickPkt	1
Total	28

