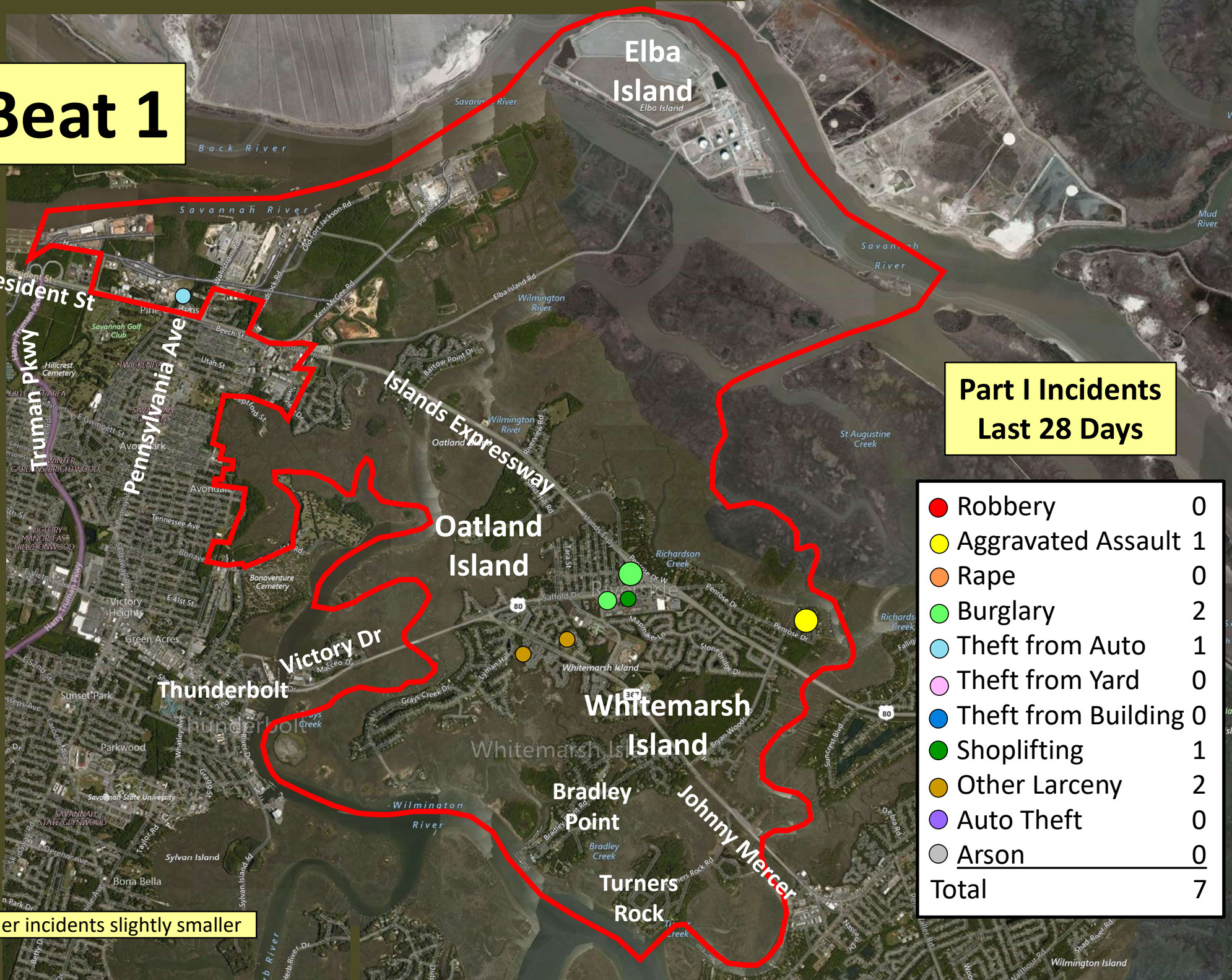


Beat 1

Part I Incidents Last 28 Days

| | |
|-----------------------|----------|
| ● Robbery | 0 |
| ● Aggravated Assault | 1 |
| ● Rape | 0 |
| ● Burglary | 2 |
| ● Theft from Auto | 1 |
| ● Theft from Yard | 0 |
| ● Theft from Building | 0 |
| ● Shoplifting | 1 |
| ● Other Larceny | 2 |
| ● Auto Theft | 0 |
| ● Arson | 0 |
| Total | 7 |

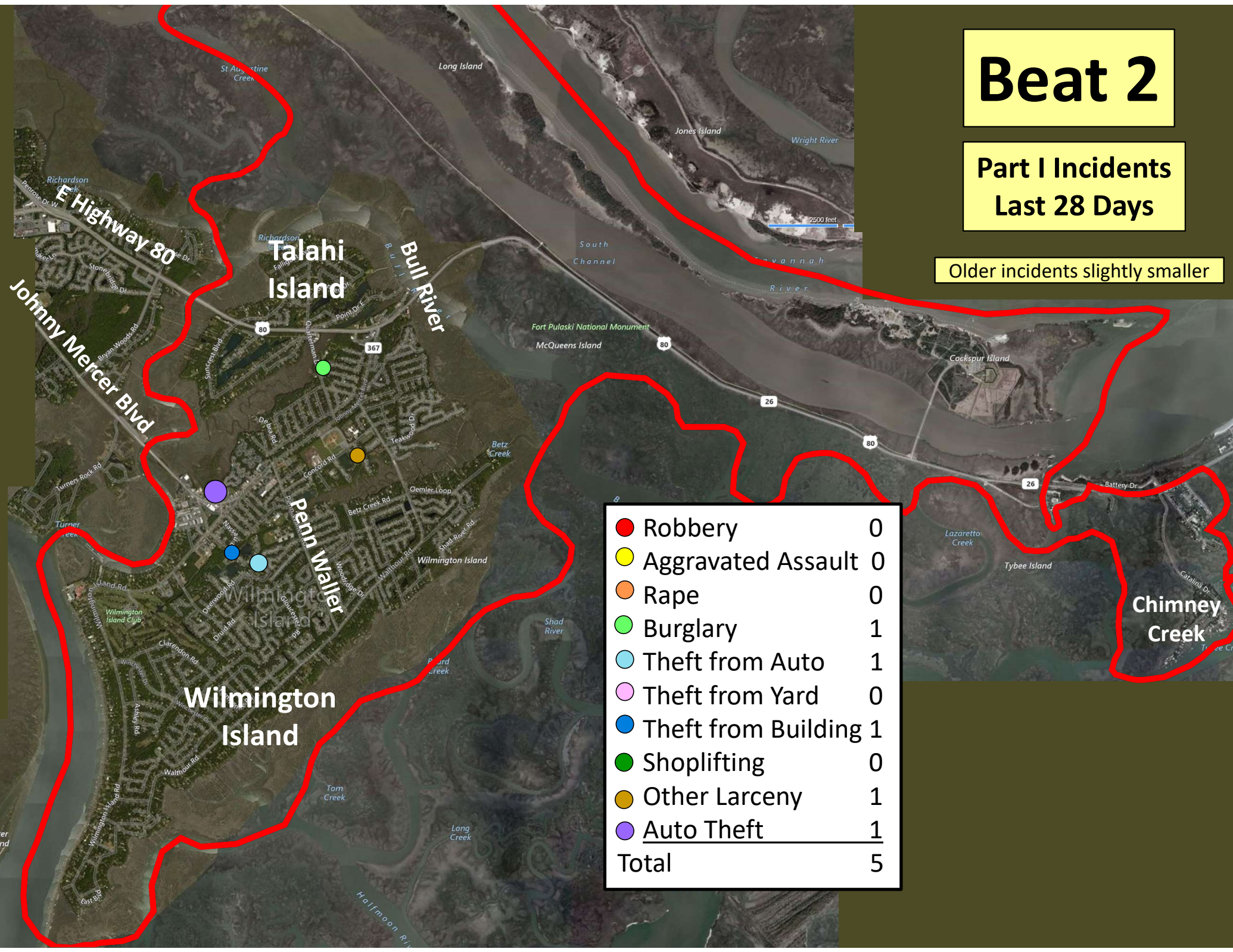
Older incidents slightly smaller



Beat 2

Part I Incidents
Last 28 Days

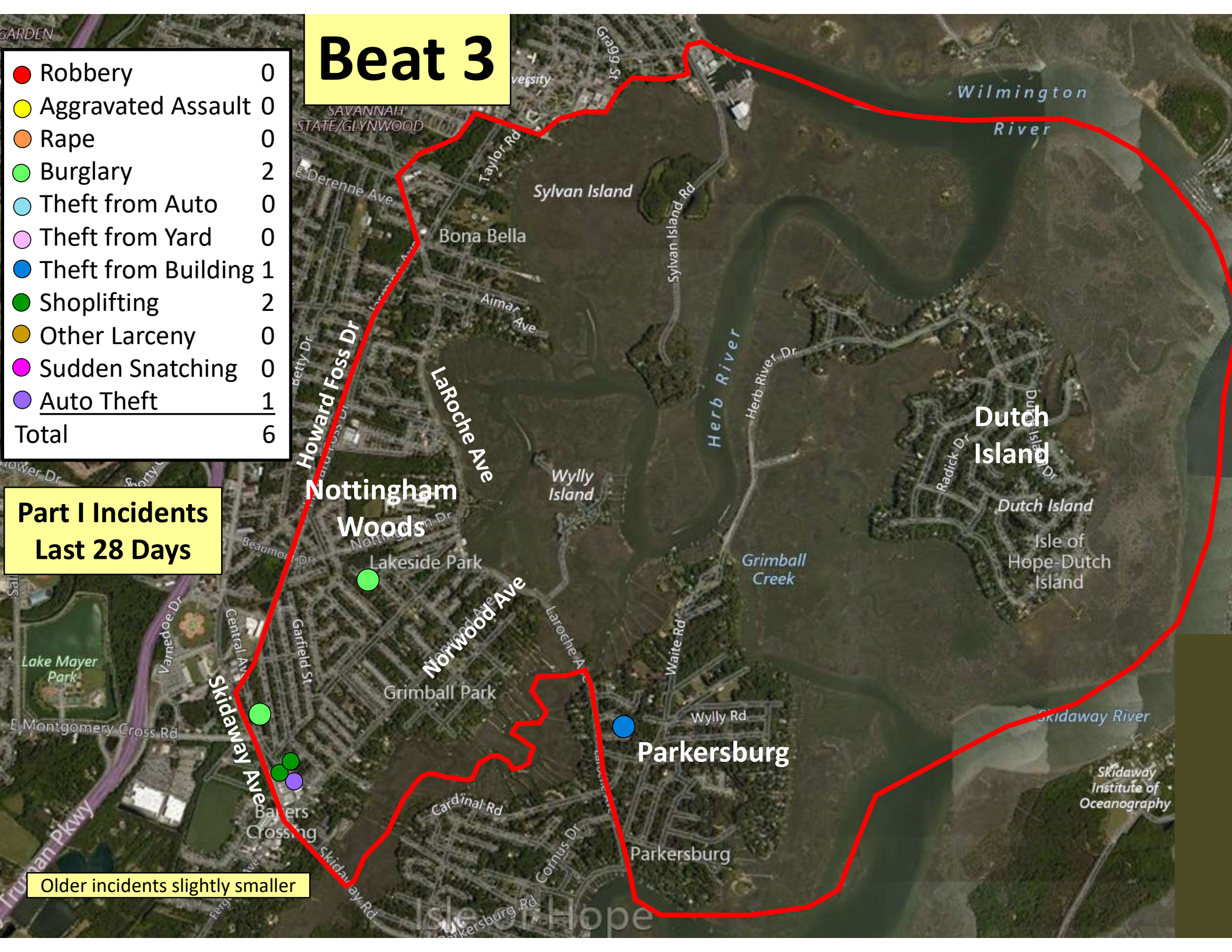
Older incidents slightly smaller



Beat 3

| | |
|-----------------------|----------|
| ● Robbery | 0 |
| ● Aggravated Assault | 0 |
| ● Rape | 0 |
| ● Burglary | 2 |
| ● Theft from Auto | 0 |
| ● Theft from Yard | 0 |
| ● Theft from Building | 1 |
| ● Shoplifting | 2 |
| ● Other Larceny | 0 |
| ● Sudden Snatching | 0 |
| ● Auto Theft | 1 |
| Total | 6 |

Part I Incidents Last 28 Days



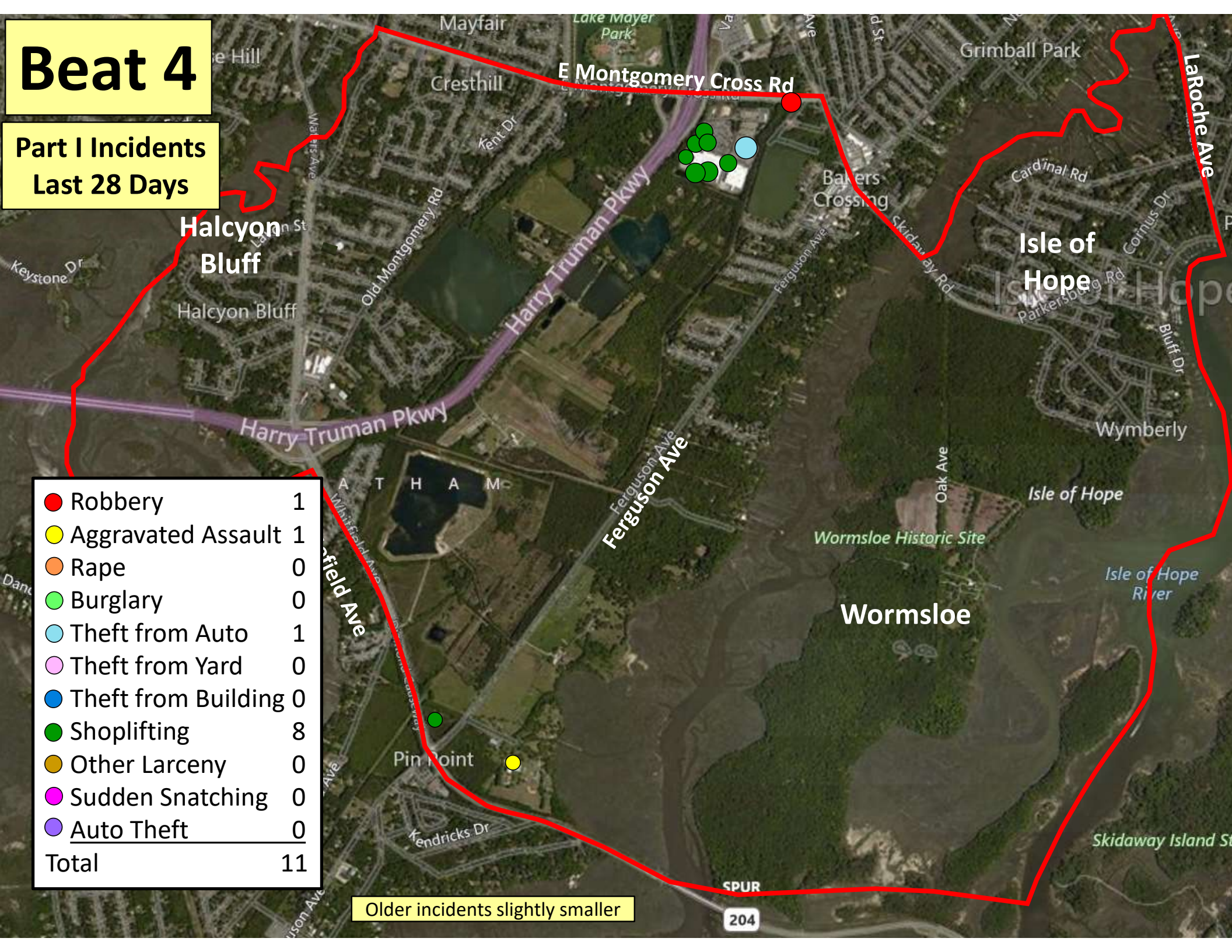
Older incidents slightly smaller

Beat 4

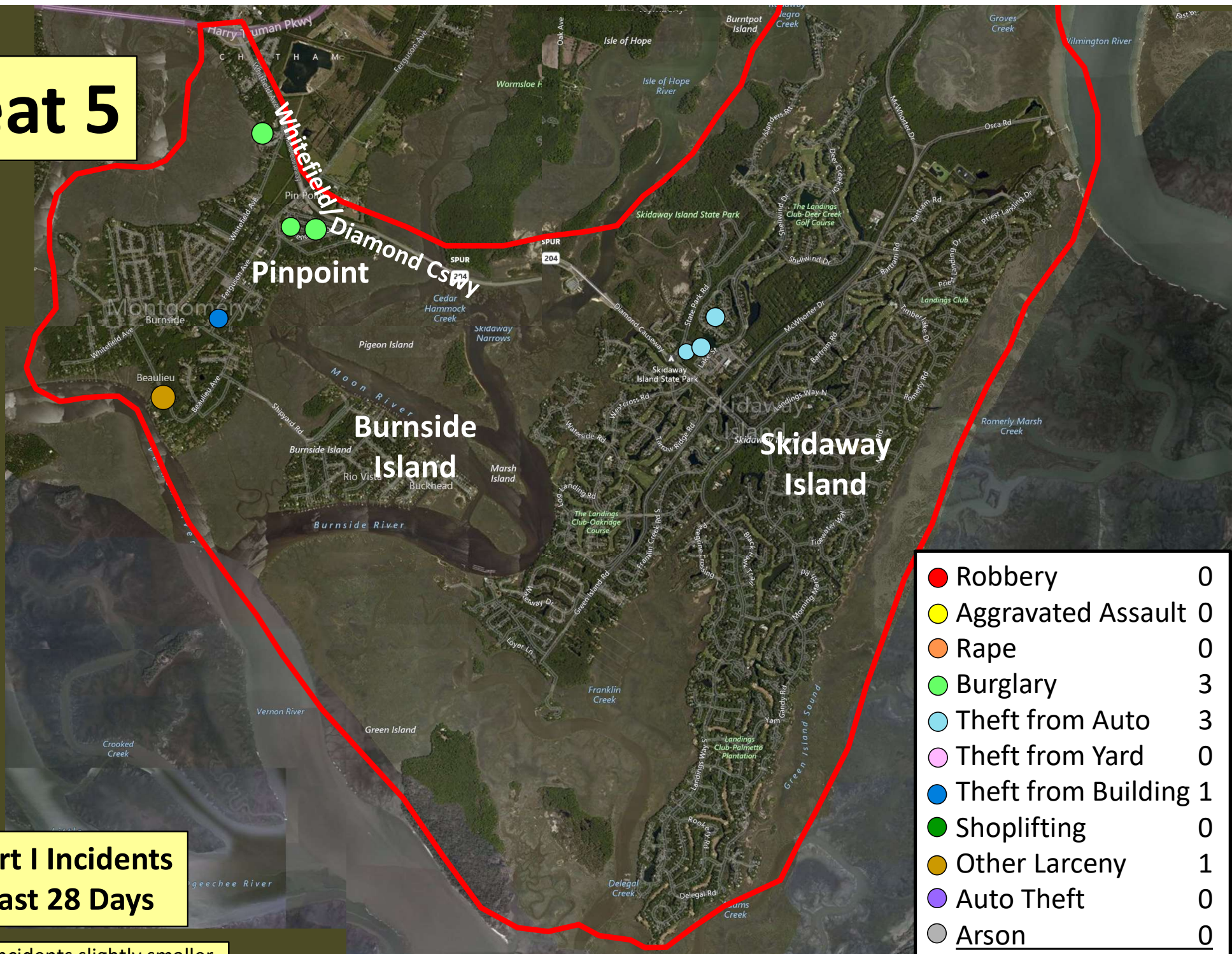
Part I Incidents
Last 28 Days

| | |
|-----------------------|-----------|
| ● Robbery | 1 |
| ● Aggravated Assault | 1 |
| ● Rape | 0 |
| ● Burglary | 0 |
| ● Theft from Auto | 1 |
| ● Theft from Yard | 0 |
| ● Theft from Building | 0 |
| ● Shoplifting | 8 |
| ● Other Larceny | 0 |
| ● Sudden Snatching | 0 |
| ● Auto Theft | 0 |
| Total | 11 |

Older incidents slightly smaller



Beat 5



**Part I Incidents
Last 28 Days**

Older incidents slightly smaller

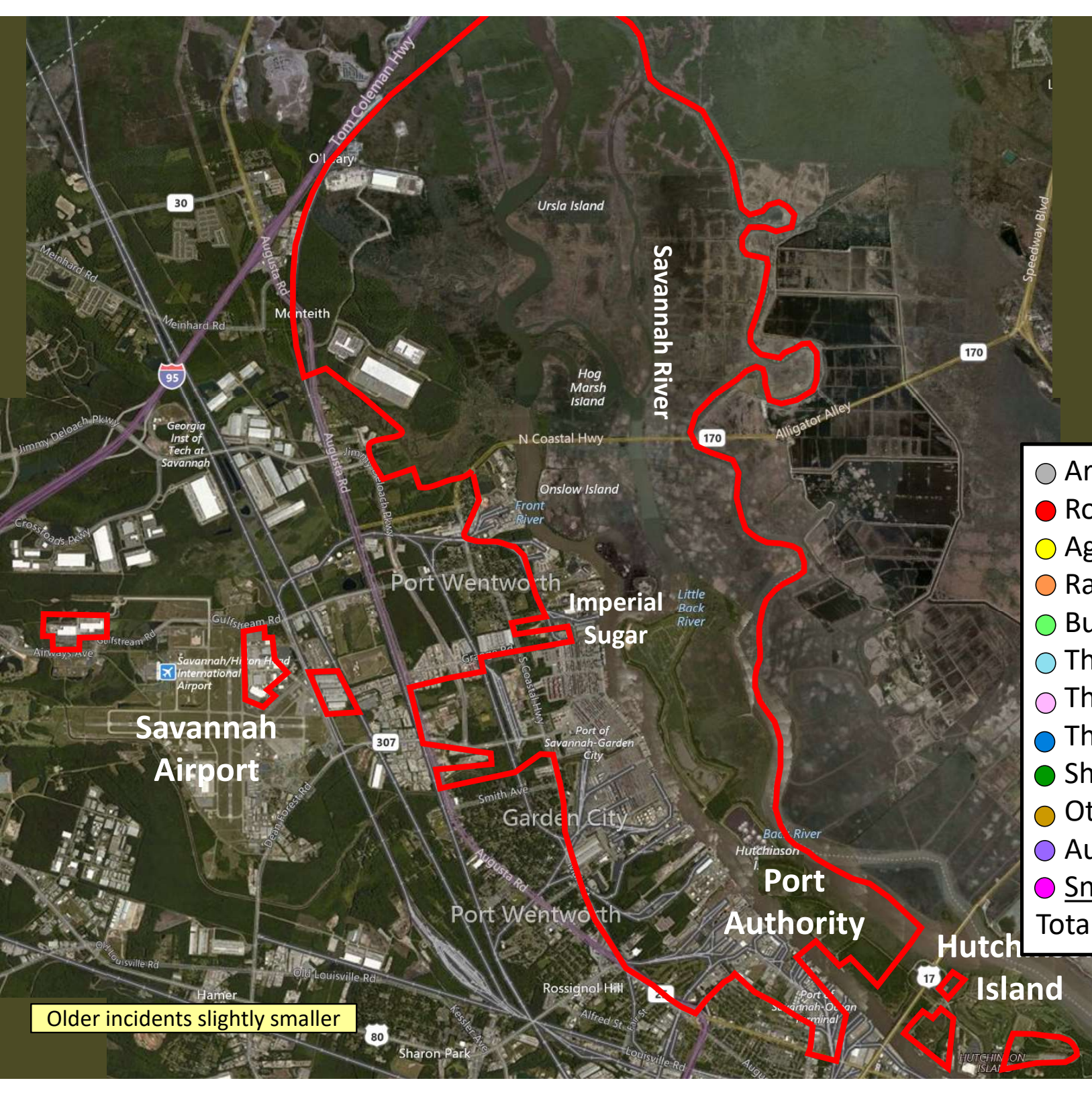
| | |
|-----------------------|----------|
| ● Robbery | 0 |
| ● Aggravated Assault | 0 |
| ● Rape | 0 |
| ● Burglary | 3 |
| ● Theft from Auto | 3 |
| ● Theft from Yard | 0 |
| ● Theft from Building | 1 |
| ● Shoplifting | 0 |
| ● Other Larceny | 1 |
| ● Auto Theft | 0 |
| ● Arson | 0 |
| Total | 8 |

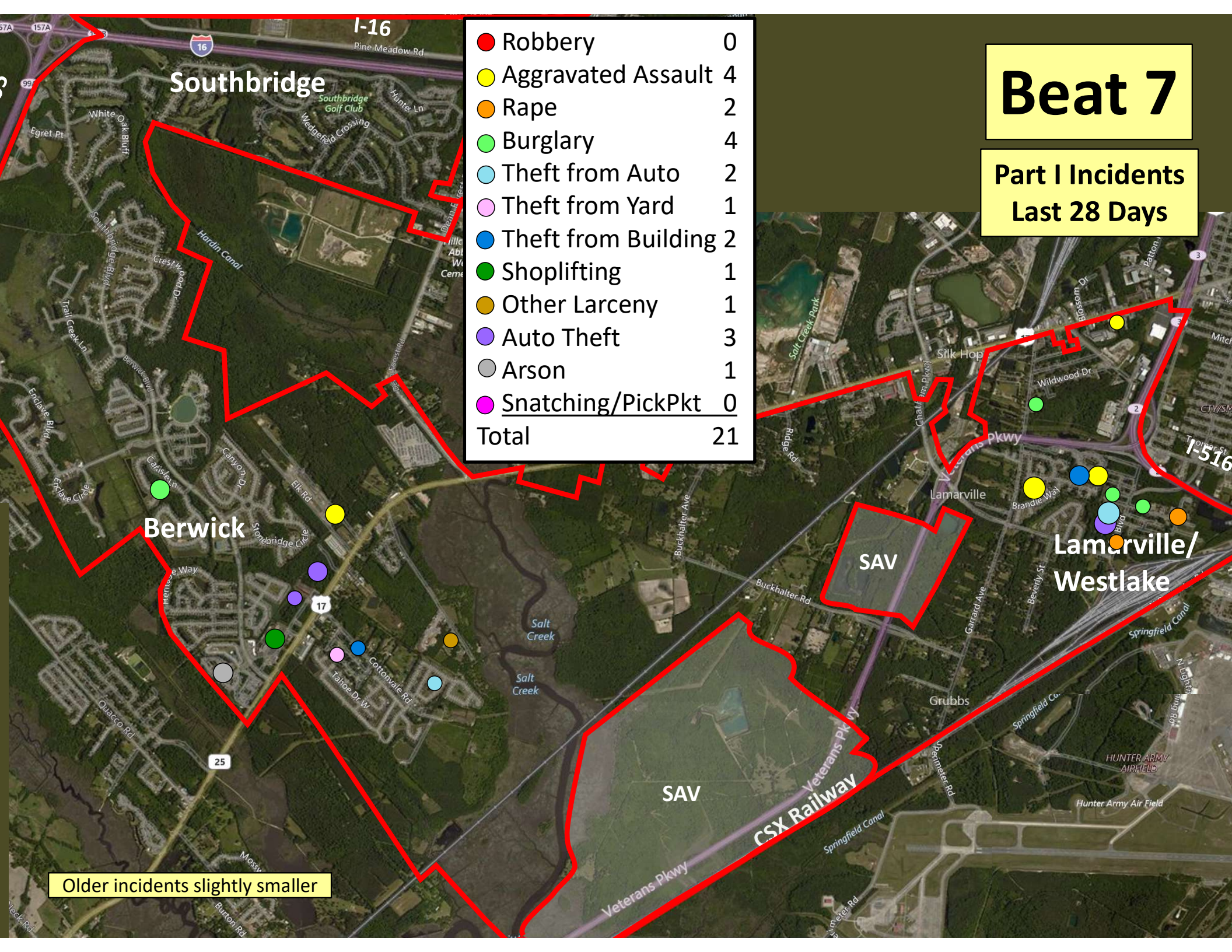
Beat 6

Part I Incidents
Last 28 Days

| | |
|---------------------|----------|
| Arson | 0 |
| Robbery | 1 |
| Aggravated Assault | 0 |
| Rape | 0 |
| Burglary | 0 |
| Theft from Auto | 0 |
| Theft from Yard | 0 |
| Theft from Building | 0 |
| Shoplifting | 0 |
| Other Larceny | 0 |
| Auto Theft | 0 |
| Snatching/PickPkt | 0 |
| Total | 0 |

Older incidents slightly smaller





| | |
|-----------------------|-----------|
| ● Robbery | 0 |
| ● Aggravated Assault | 4 |
| ● Rape | 2 |
| ● Burglary | 4 |
| ● Theft from Auto | 2 |
| ● Theft from Yard | 1 |
| ● Theft from Building | 2 |
| ● Shoplifting | 1 |
| ● Other Larceny | 1 |
| ● Auto Theft | 3 |
| ● Arson | 1 |
| ● Snatching/PickPkt | 0 |
| Total | 21 |

Beat 7

Part I Incidents
Last 28 Days

Older incidents slightly smaller

SAV

SAV
Veterans Pkwy
CSX Railway

Lamarville/
Westlake

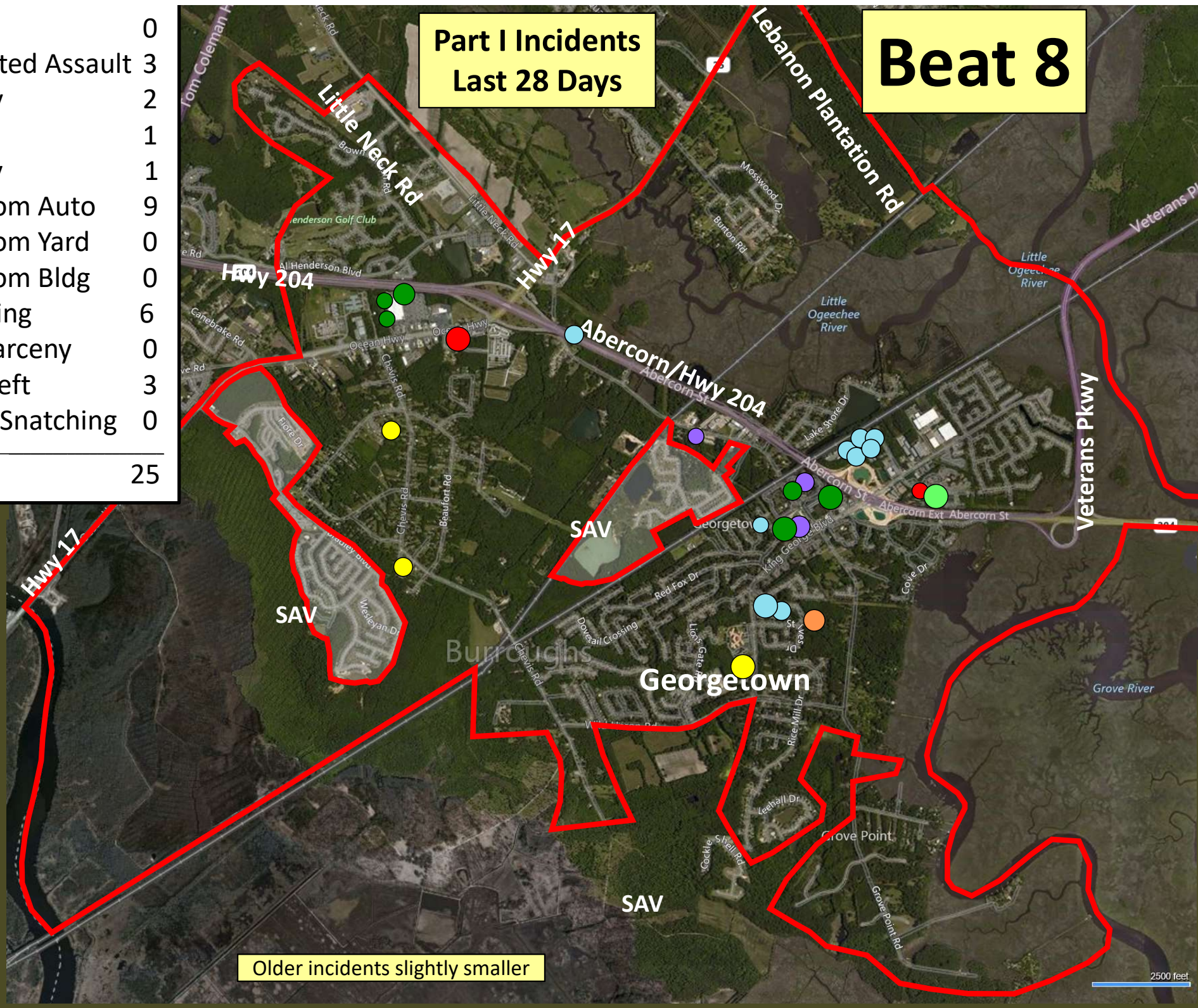
HUNTER ARMY AIRFIELD

Hunter Army Air Field

Beat 8

Part I Incidents Last 28 Days

| | |
|--------------------|-----------|
| Arson | 0 |
| Aggravated Assault | 3 |
| Robbery | 2 |
| Rape | 1 |
| Burglary | 1 |
| Theft from Auto | 9 |
| Theft from Yard | 0 |
| Theft from Bldg | 0 |
| Shoplifting | 6 |
| Other Larceny | 0 |
| Auto Theft | 3 |
| Sudden Snatching | 0 |
| Total | 25 |



Older incidents slightly smaller

Beat 9

Part I Incidents
Last 28 Days

| | |
|-----------------------|-----------|
| ● Robbery | 0 |
| ● Aggravated Assault | 3 |
| ● Rape | 2 |
| ● Burglary | 3 |
| ● Theft from Auto | 4 |
| ● Theft from Yard | 4 |
| ● Theft from Building | 2 |
| ● Shoplifting | 1 |
| ● Other Larceny | 0 |
| ● Auto Theft | 3 |
| ● Sudden Snatching | 1 |
| ● Arson | 0 |
| Total | 23 |



Older incidents slightly smaller