

Beat 1

Part I Incidents Last 28 Days

● Robbery	1
● Aggravated Assault	1
● Rape	0
● Burglary	0
● Theft from Auto	1
● Theft from Yard	0
● Theft from Building	0
● Shoplifting	1
● Other Larceny	0
● Auto Theft	1
● Snatching/PickPkt	0
Total	5

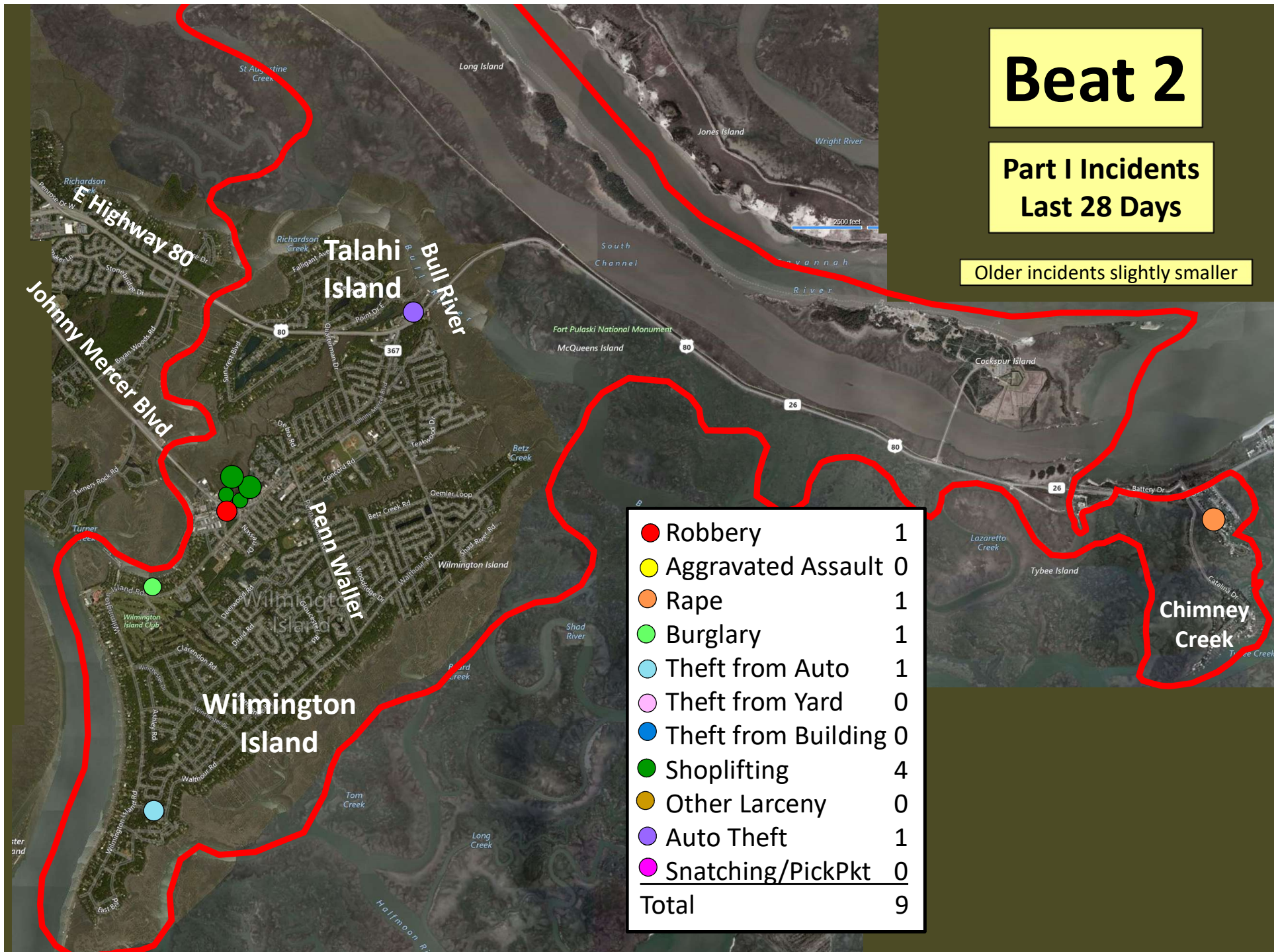
Older incidents slightly smaller

Beat 2

Part I Incidents Last 28 Days

Older incidents slightly smaller

Robbery	1
Aggravated Assault	0
Rape	1
Burglary	1
Theft from Auto	1
Theft from Yard	0
Theft from Building	0
Shoplifting	4
Other Larceny	0
Auto Theft	1
Snatching/PickPkt	0
Total	9



Beat 3

● Robbery	0
● Aggravated Assault	2
● Rape	1
● Burglary	0
● Theft from Auto	0
● Theft from Yard	0
● Theft from Building	2
● Shoplifting	0
● Other Larceny	0
● Auto Theft	1
● Snatching/PickPkt	0
Total	6

Part I Incidents Last 28 Days

Older incidents slightly smaller

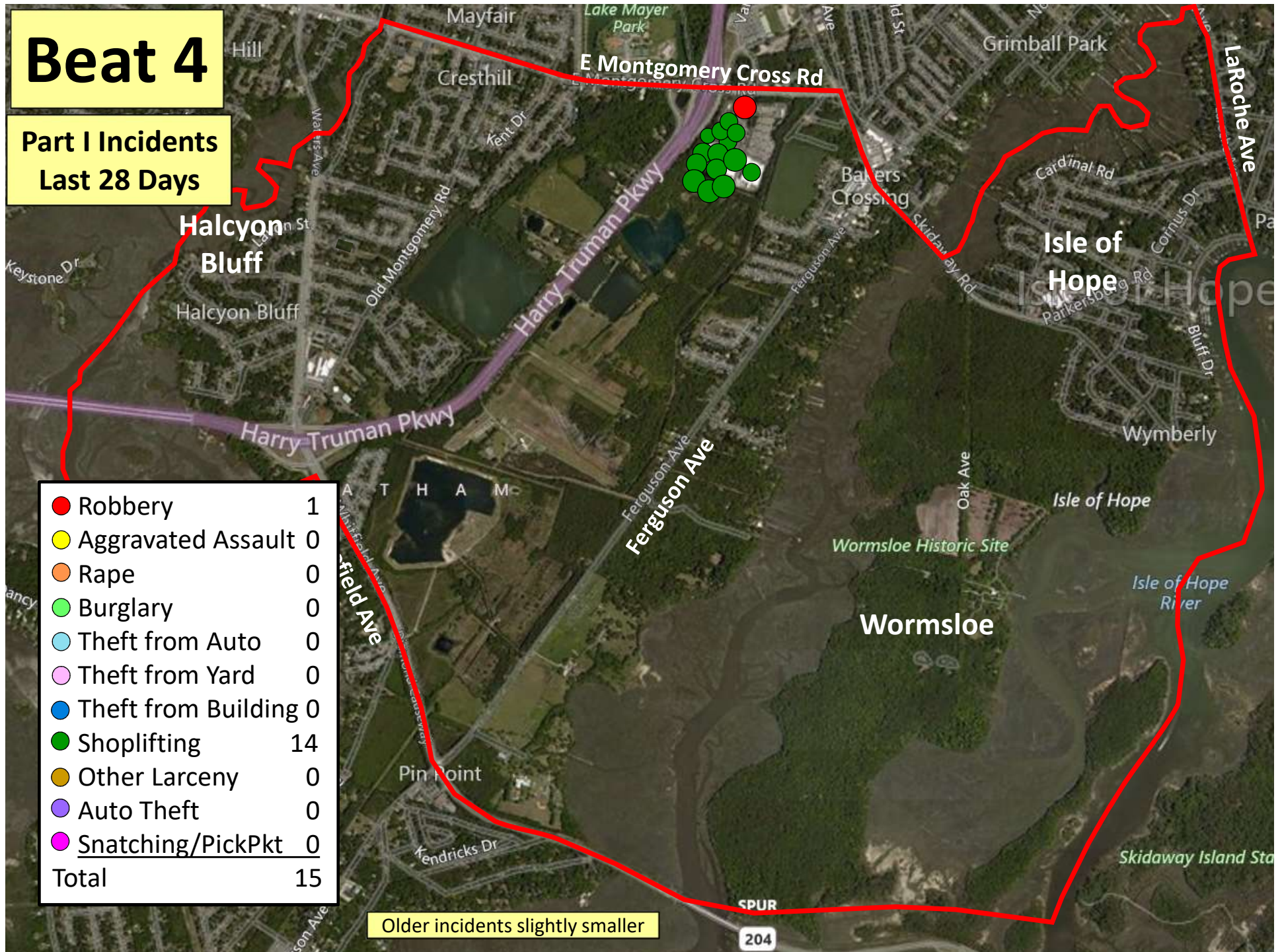


Beat 4

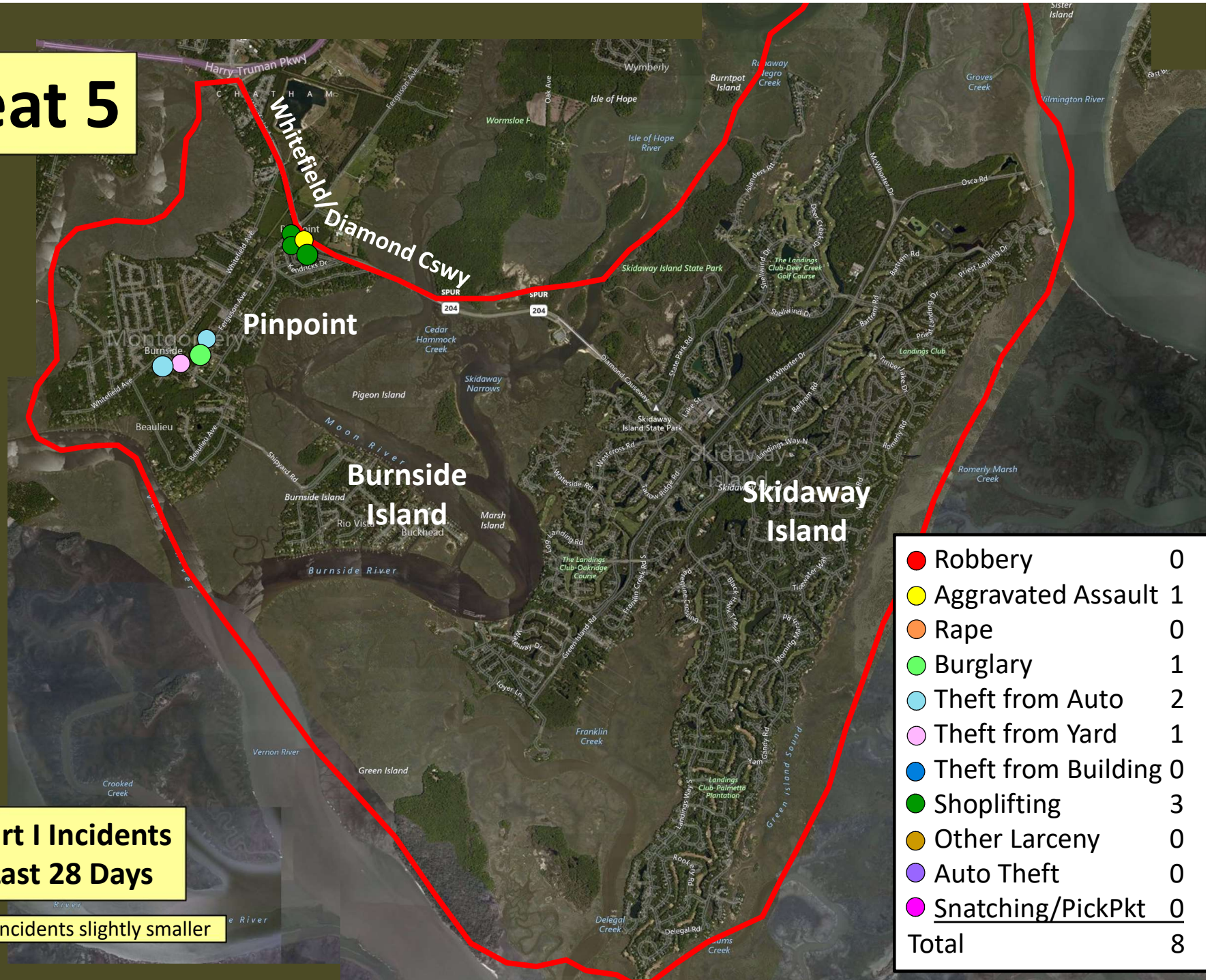
Part I Incidents Last 28 Days

● Robbery	1
● Aggravated Assault	0
● Rape	0
● Burglary	0
● Theft from Auto	0
● Theft from Yard	0
● Theft from Building	0
● Shoplifting	14
● Other Larceny	0
● Auto Theft	0
● Snatching/PickPkt	0
Total	15

Older incidents slightly smaller



Beat 5



Part I Incidents
Last 28 Days

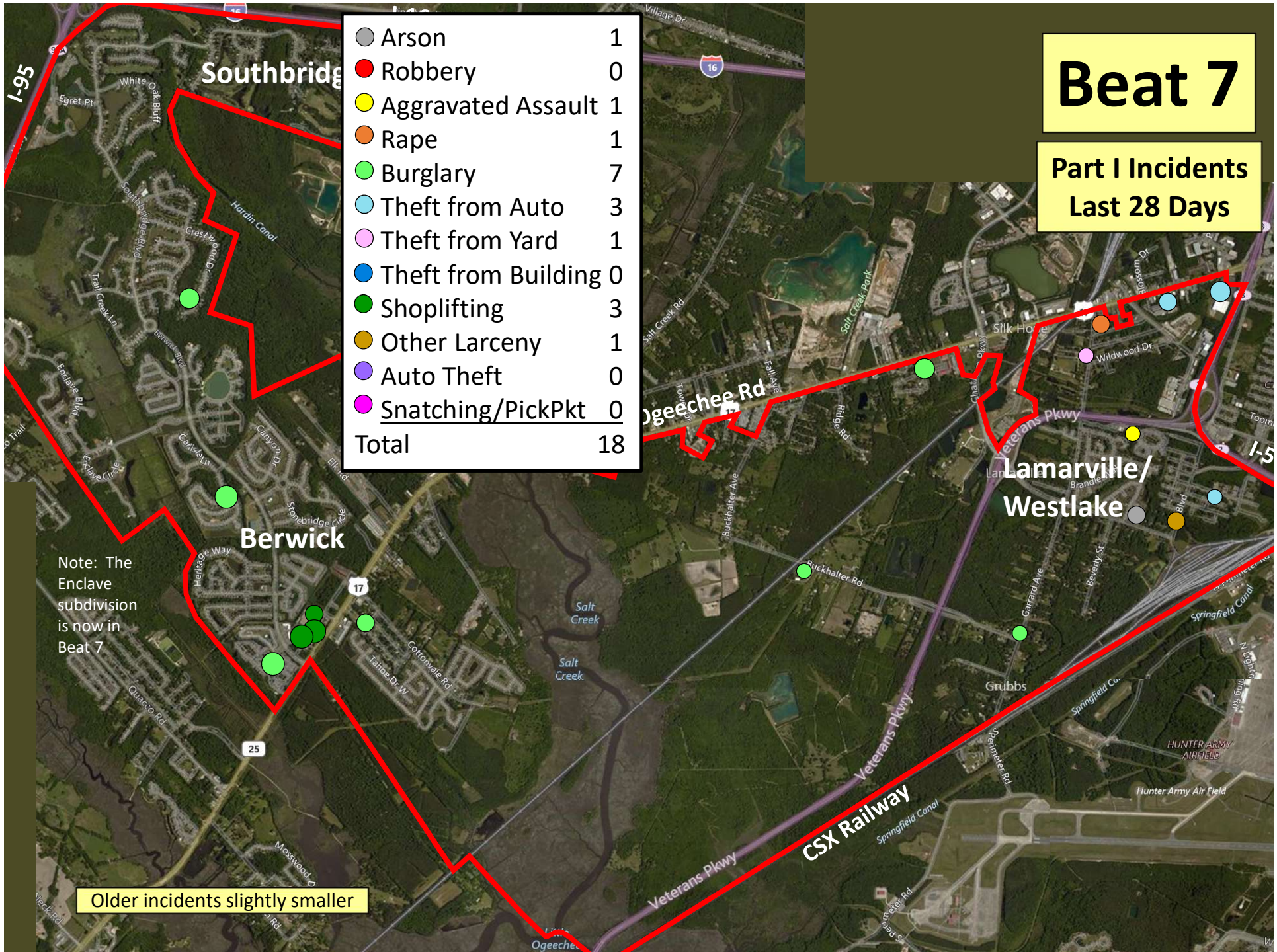
Older incidents slightly smaller

Beat 6

Part I Incidents
Last 28 Days

● Robbery	0
● Aggravated Assault	0
● Rape	0
● Burglary	0
● Theft from Auto	0
● Theft from Yard	0
● Theft from Building	0
● Shoplifting	0
● Other Larceny	0
● Auto Theft	0
● Snatching/PickPkt	0
Total	0

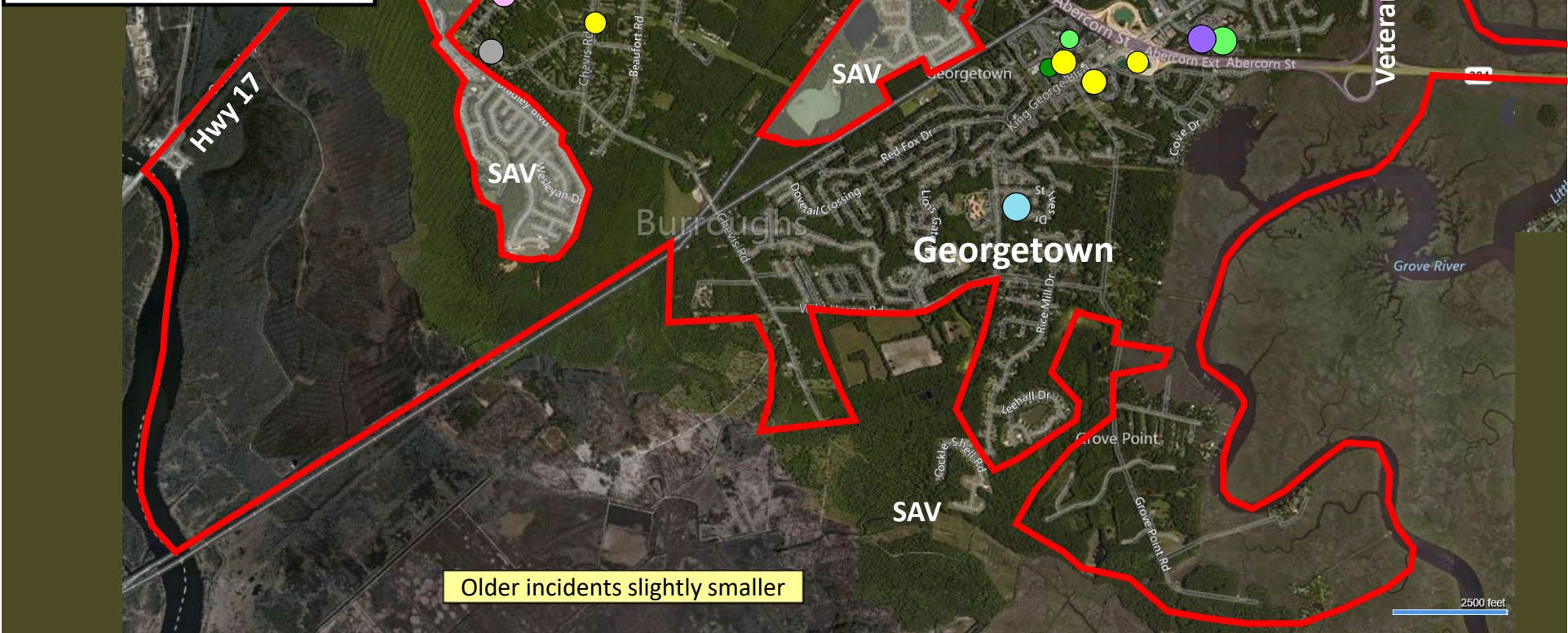
Older incidents slightly smaller



Part I Incidents
Last 28 Days

Beat 8

Arson	1
Robbery	0
Aggravated Assault	4
Rape	0
Burglary	3
Theft from Auto	2
Theft from Yard	1
Theft from Bldg	0
Shoplifting	16
Other Larceny	0
Auto Theft	1
Total	28



Older incidents slightly smaller

Beat 9

Part I Incidents Last 28 Days

Note: The
Enclave
subdivision
is now in
Beat 7

Arson	2
Robbery	0
Aggravated Assault	1
Rape	0
Burglary	3
Theft from Auto	9
Theft from Yard	5
Theft from Building	0
Shoplifting	0
Other Larceny	1
Auto Theft	1
Snatching/PickPkt	0
Total	22

