

Beat 1

Part I Incidents Last 28 Days

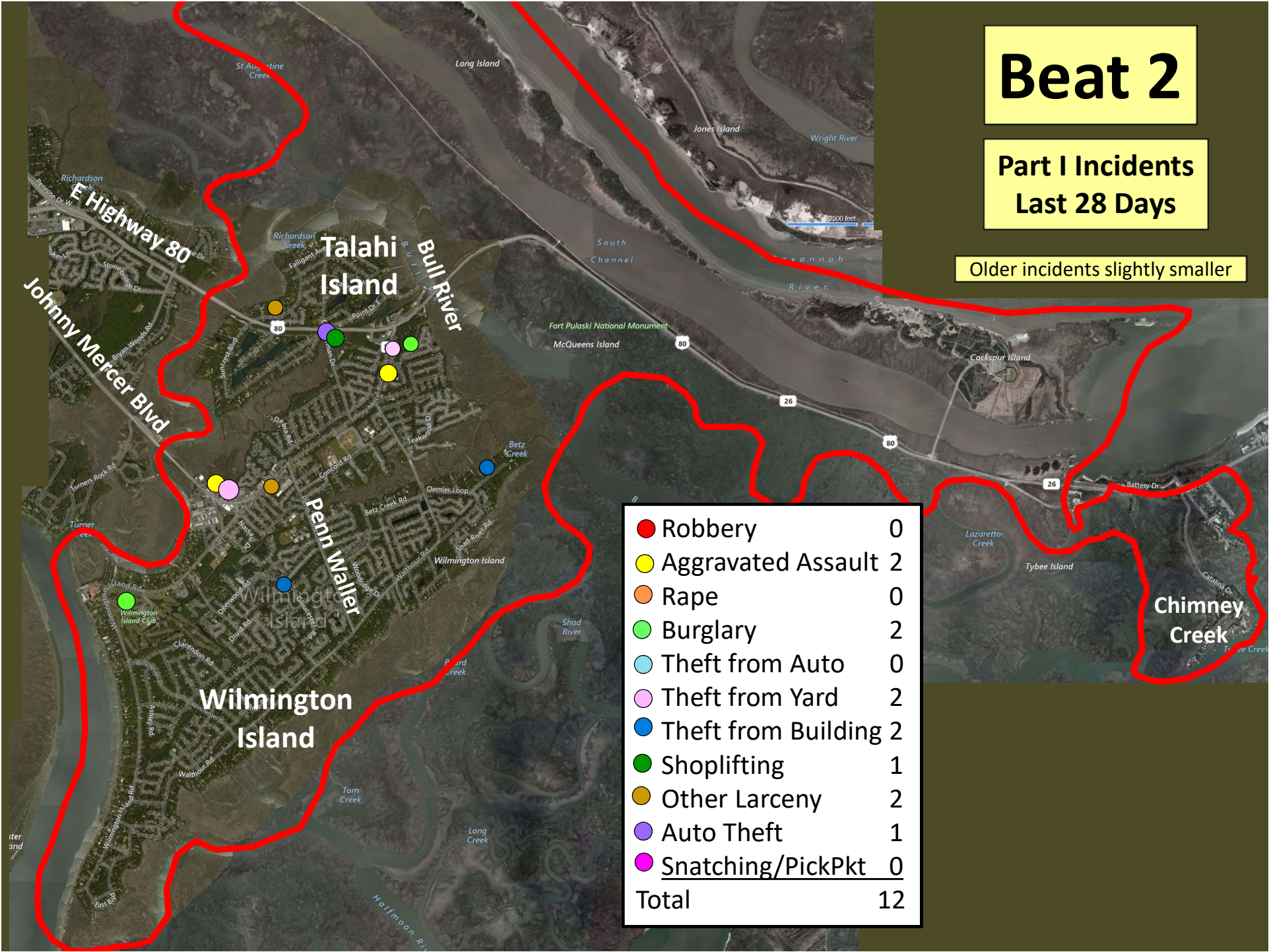
● Robbery	0
● Aggravated Assault	1
● Rape	0
● Burglary	2
● Theft from Auto	2
● Theft from Yard	0
● Theft from Building	0
● Shoplifting	1
● Other Larceny	1
● Auto Theft	0
● Snatching/PickPkt	0
Total	7

Older incidents slightly smaller

Beat 2

Part I Incidents Last 28 Days

Older incidents slightly smaller



Robbery	0
Aggravated Assault	2
Rape	0
Burglary	2
Theft from Auto	0
Theft from Yard	2
Theft from Building	2
Shoplifting	1
Other Larceny	2
Auto Theft	1
Snatching/PickPkt	0
Total	12

Beat 3

● Robbery	0
● Aggravated Assault	0
● Rape	0
● Burglary	0
● Theft from Auto	4
● Theft from Yard	0
● Theft from Building	0
● Shoplifting	0
● Other Larceny	0
● Auto Theft	0
● Snatching/PickPkt	0
Total	4

Part I Incidents Last 28 Days

Older incidents slightly smaller

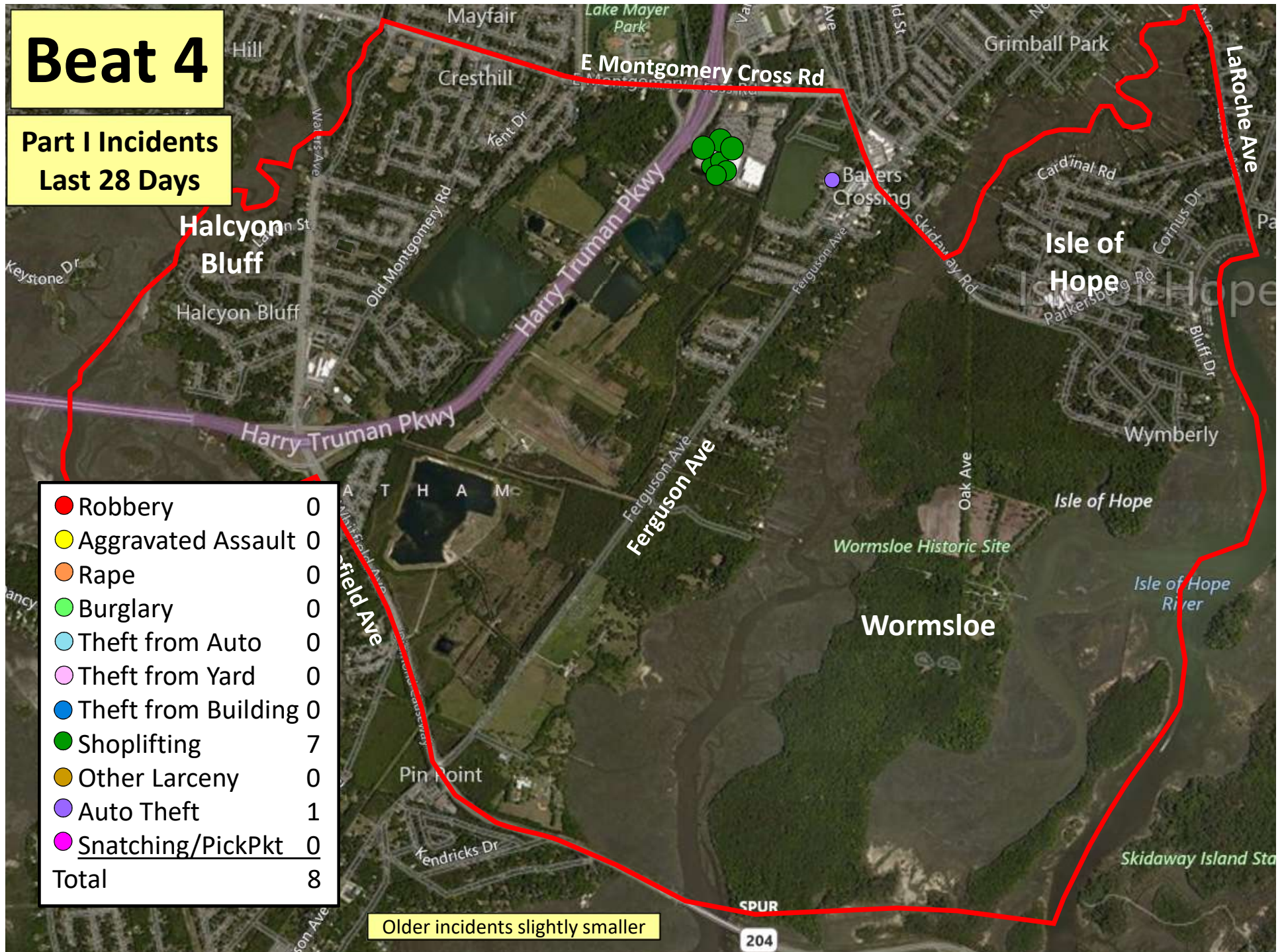


Beat 4

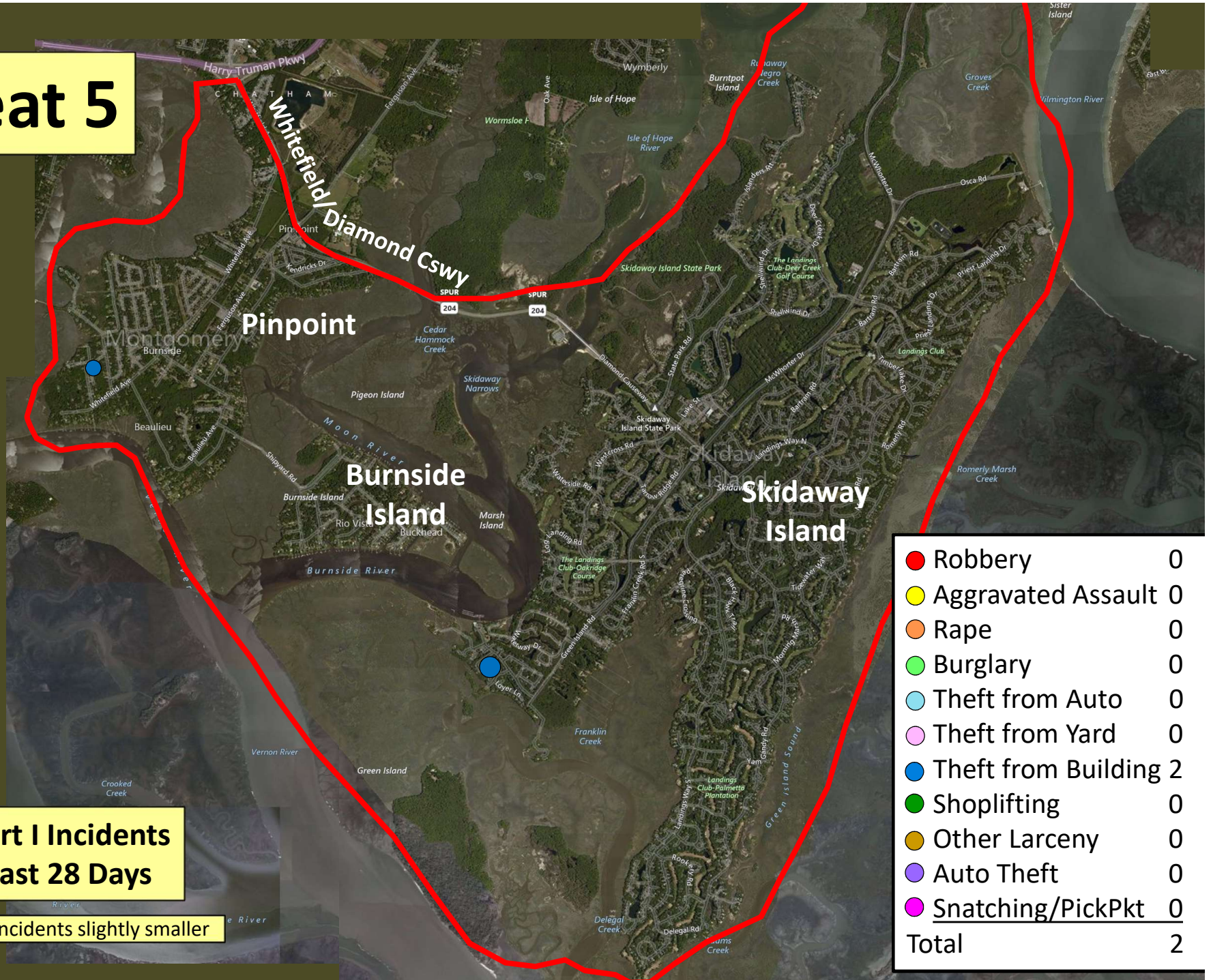
Part I Incidents Last 28 Days

● Robbery	0
● Aggravated Assault	0
● Rape	0
● Burglary	0
● Theft from Auto	0
● Theft from Yard	0
● Theft from Building	0
● Shoplifting	7
● Other Larceny	0
● Auto Theft	1
● Snatching/PickPkt	0
Total	8

Older incidents slightly smaller



Beat 5



Part I Incidents
Last 28 Days

Older incidents slightly smaller

Beat 6

Part I Incidents
Last 28 Days

● Robbery	0
● Aggravated Assault	0
● Rape	0
● Burglary	0
● Theft from Auto	1
● Theft from Yard	1
● Theft from Building	0
● Shoplifting	0
● Other Larceny	0
● Auto Theft	0
● Snatching/PickPkt	0
Total	2

Older incidents slightly smaller

● Robbery	0
● Aggravated Assault	1
● Rape	1
● Burglary	5
● Theft from Auto	7
● Theft from Yard	4
● Theft from Bldg	4
● Shoplifting	13
● Other Larceny	5
● Auto Theft	1
● Arson	3
Total	44

Part I Incidents Last 28 Days

Beat 8



Beat 9

Part I Incidents Last 28 Days

Note: The
Enclave
subdivision
is now in
Beat 7

● Robbery	1
● Aggravated Assault	5
● Rape	0
● Burglary	3
● Theft from Auto	2
● Theft from Yard	2
● Theft from Building	1
● Shoplifting	1
● Other Larceny	0
● Auto Theft	2
● Snatching/PickPkt	0
Total	17

