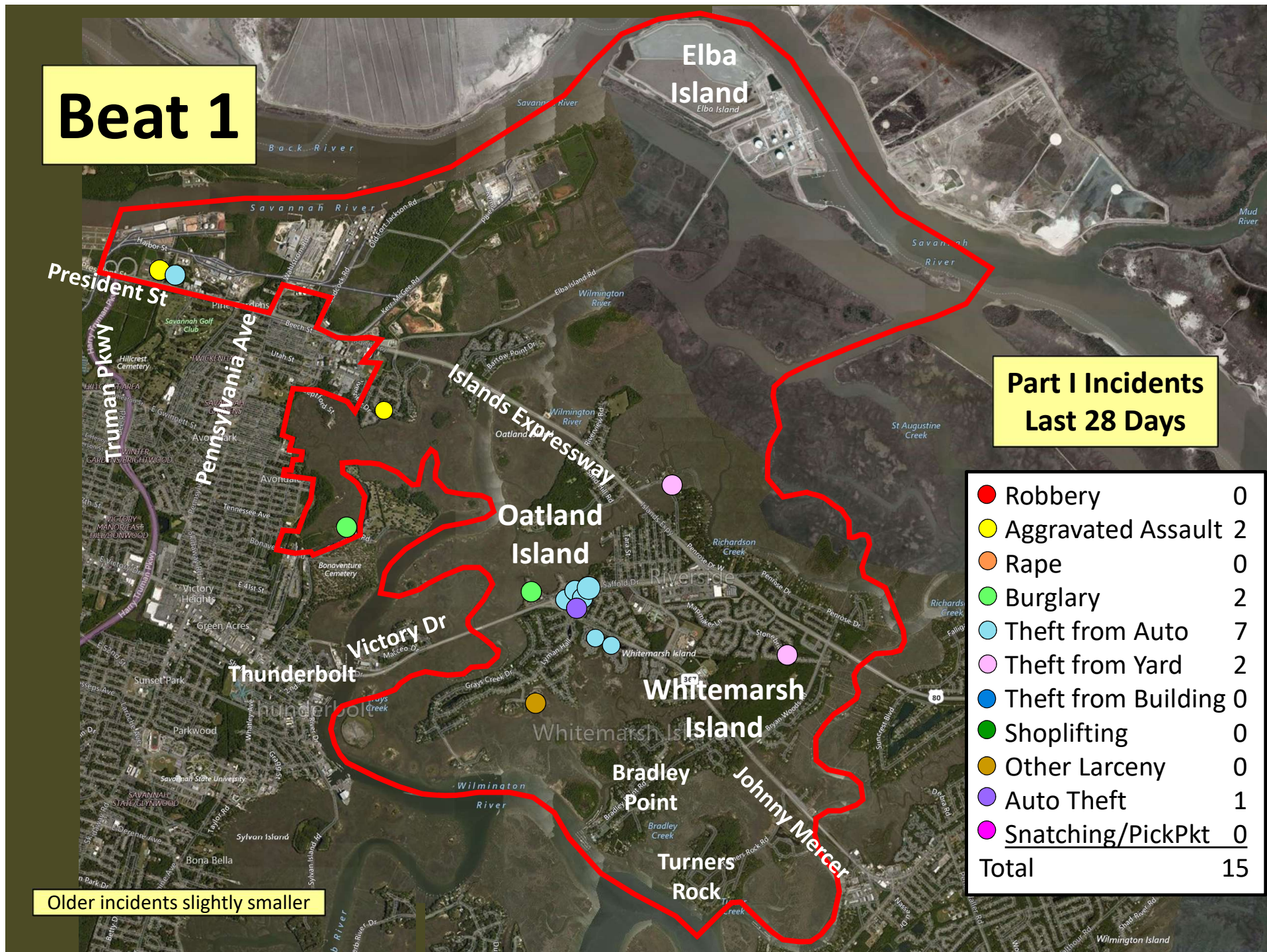


Beat 1

Part I Incidents Last 28 Days

● Robbery	0
● Aggravated Assault	2
● Rape	0
● Burglary	2
● Theft from Auto	7
● Theft from Yard	2
● Theft from Building	0
● Shoplifting	0
● Other Larceny	0
● Auto Theft	1
● Snatching/PickPkt	0
Total	15

Older incidents slightly smaller



Beat 2

Part I Incidents Last 28 Days

Older incidents slightly smaller



The map displays Beat 2, which includes Talahi Island, Penn Weller Island, and Wilmington Island. A red boundary outlines the beat area. Various streets and landmarks are labeled, including E Highway 80, Johnny Mercer Blvd, Bull River, and Fort Pulaski National Monument. Incident locations are marked with colored dots: red for Robbery, yellow for Aggravated Assault, orange for Rape, green for Burglary, light blue for Theft from Auto, pink for Theft from Yard, dark blue for Theft from Building, dark green for Shoplifting, brown for Other Larceny, purple for Auto Theft, and magenta for Snatching/PickPkt. A legend table in the bottom right corner provides the count for each incident type.

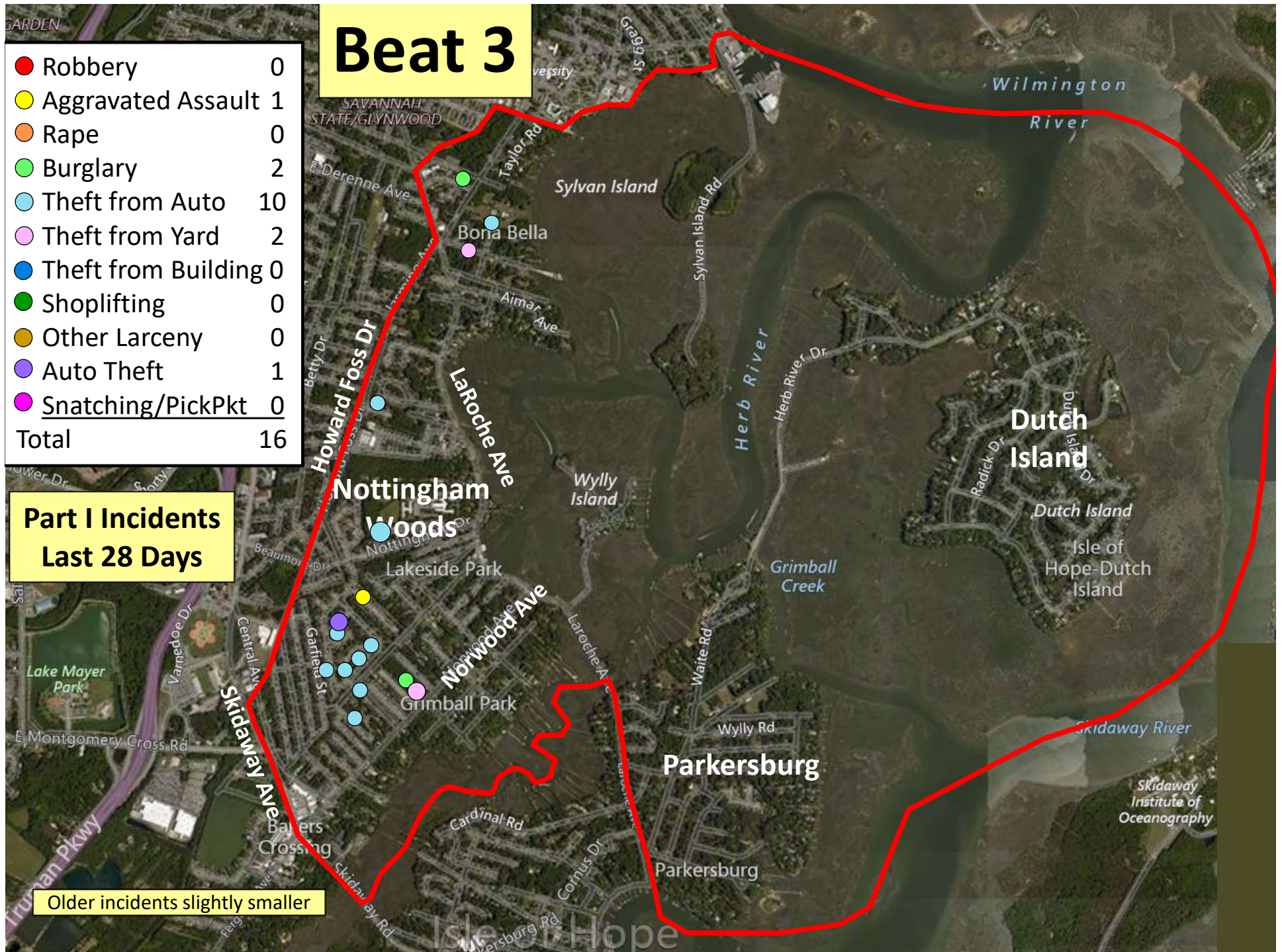
Robbery	1
Aggravated Assault	1
Rape	1
Burglary	1
Theft from Auto	9
Theft from Yard	1
Theft from Building	0
Shoplifting	0
Other Larceny	4
Auto Theft	5
Snatching/PickPkt	0
Total	23

Beat 3

● Robbery	0
● Aggravated Assault	1
● Rape	0
● Burglary	2
● Theft from Auto	10
● Theft from Yard	2
● Theft from Building	0
● Shoplifting	0
● Other Larceny	0
● Auto Theft	1
● Snatching/PickPkt	0
Total	16

Part I Incidents Last 28 Days

Older incidents slightly smaller

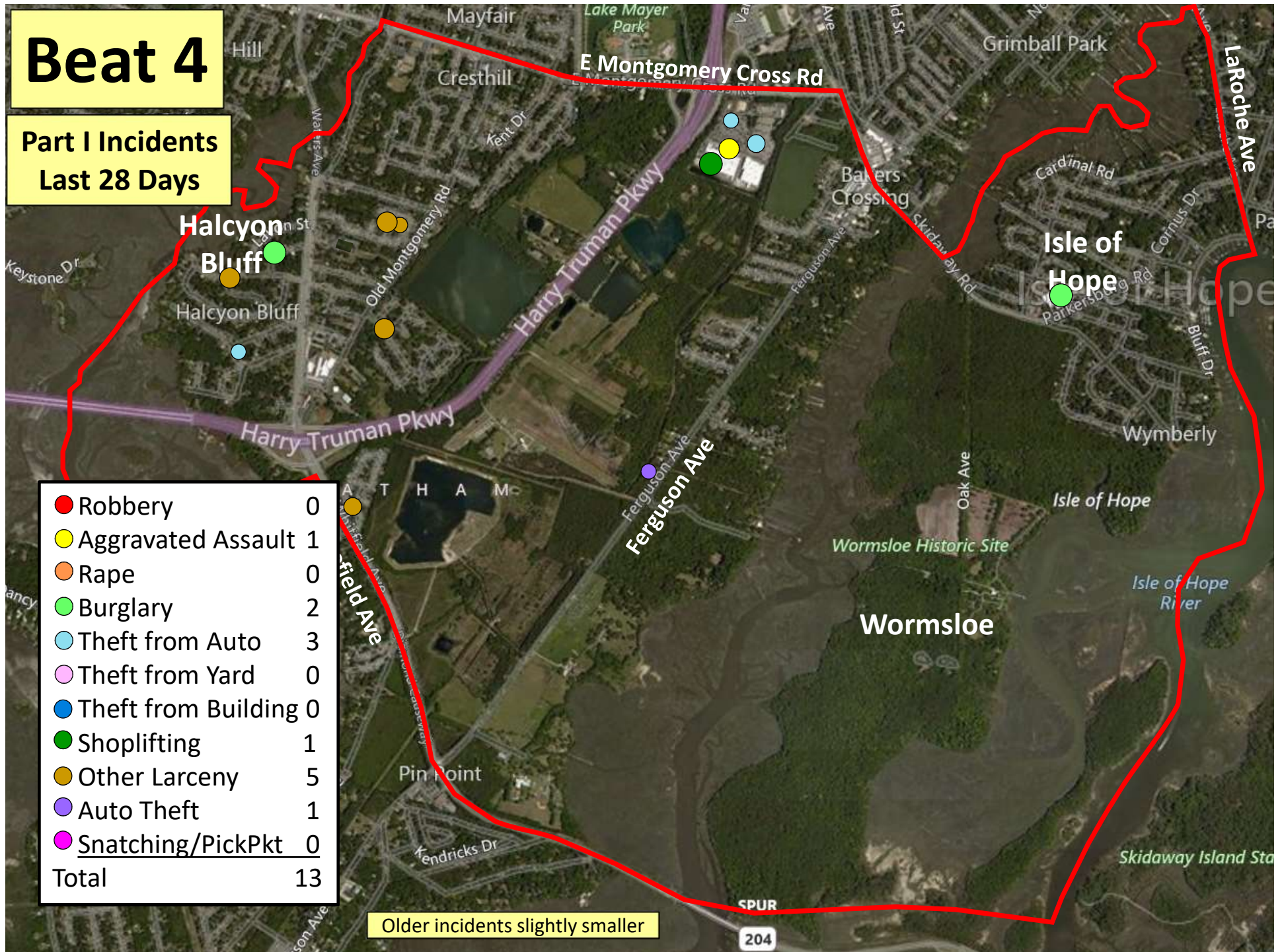


Beat 4

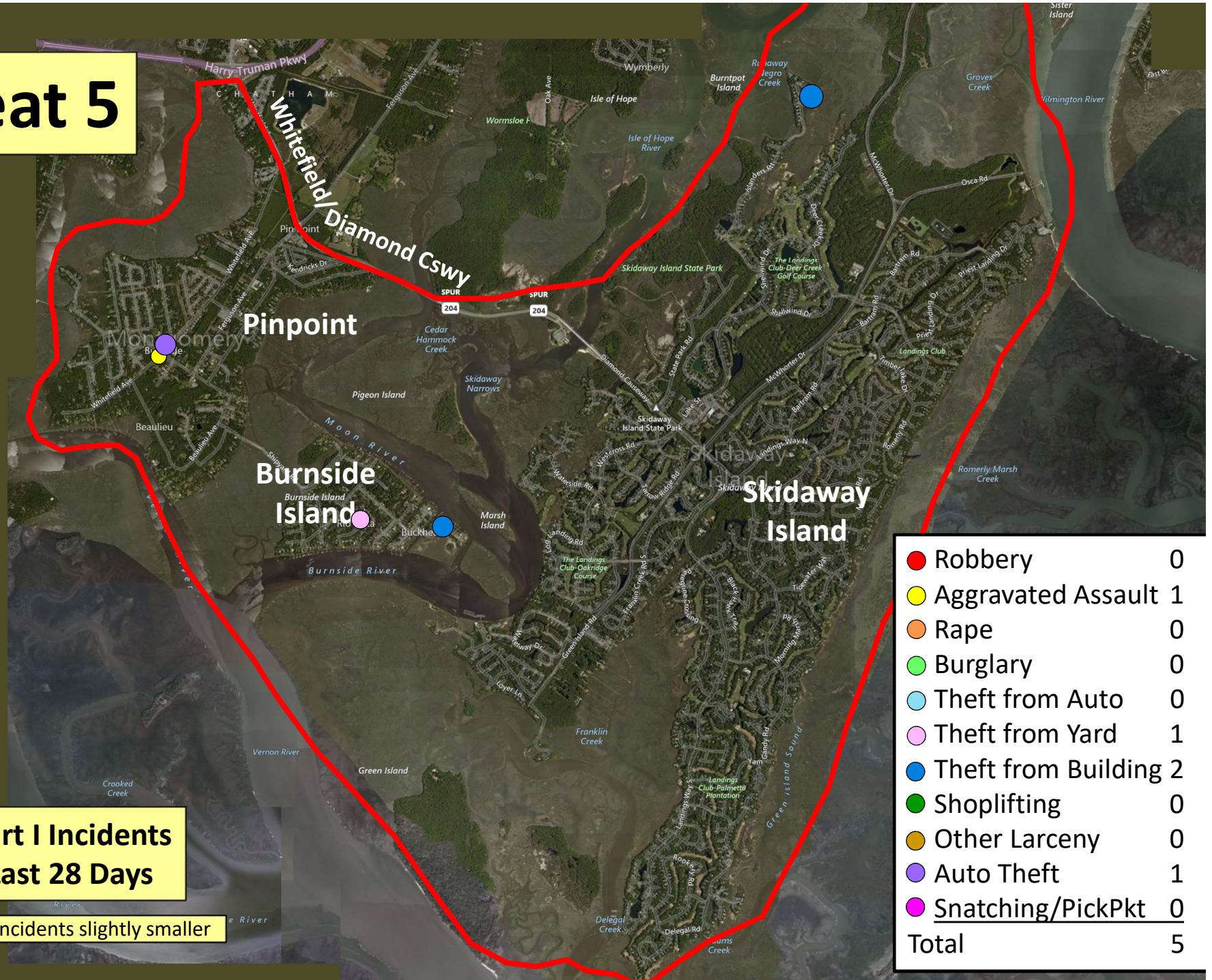
Part I Incidents Last 28 Days

● Robbery	0
● Aggravated Assault	1
● Rape	0
● Burglary	2
● Theft from Auto	3
● Theft from Yard	0
● Theft from Building	0
● Shoplifting	1
● Other Larceny	5
● Auto Theft	1
● Snatching/PickPkt	0
Total	13

Older incidents slightly smaller



Beat 5



● Robbery	0
● Aggravated Assault	1
● Rape	0
● Burglary	0
● Theft from Auto	0
● Theft from Yard	1
● Theft from Building	2
● Shoplifting	0
● Other Larceny	0
● Auto Theft	1
● Snatching/PickPkt	0
Total	5

Part I Incidents
Last 28 Days

Older incidents slightly smaller

Beat 6

Part I Incidents
Last 28 Days

● Robbery	0
● Aggravated Assault	0
● Rape	0
● Burglary	0
● Theft from Auto	0
● Theft from Yard	0
● Theft from Building	0
● Shoplifting	0
● Other Larceny	0
● Auto Theft	0
● Snatching/PickPkt	0
Total	0

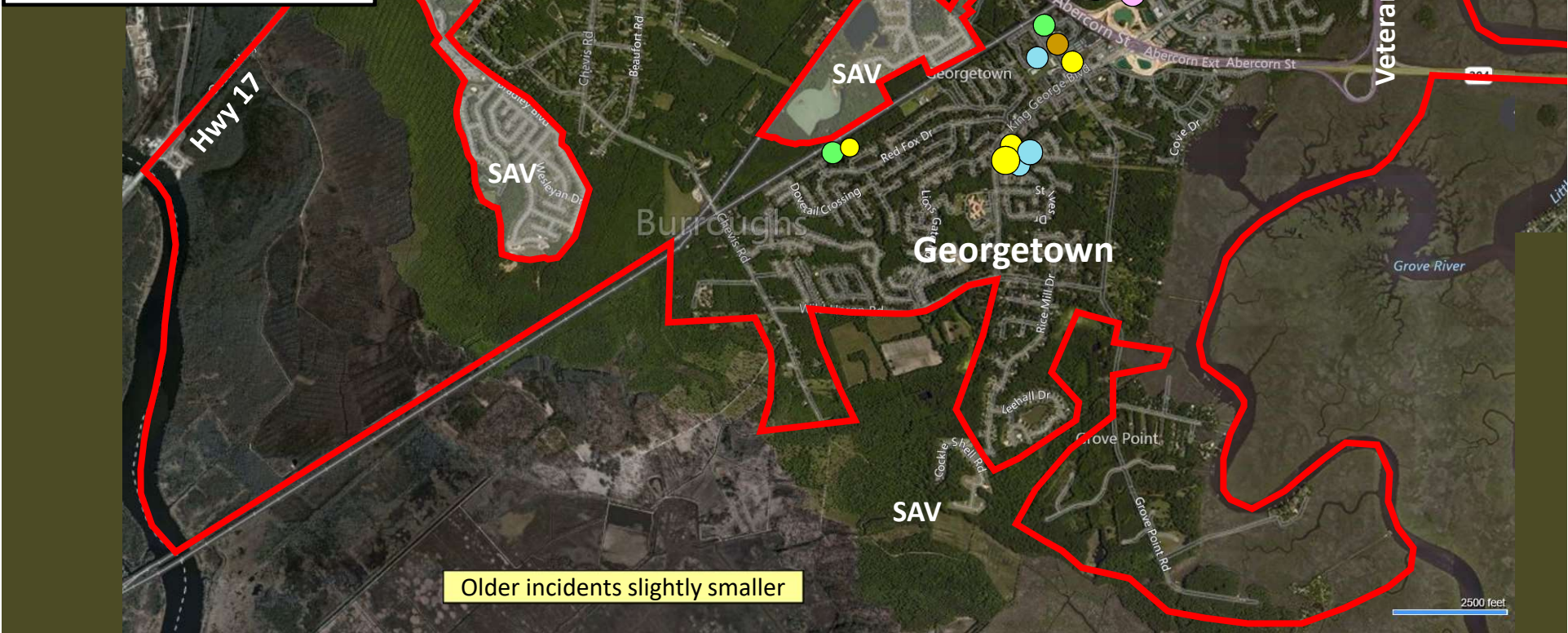
Older incidents slightly smaller



Part I Incidents
Last 28 Days

Beat 8

● Robbery	1
● Aggravated Assault	4
● Rape	0
● Burglary	3
● Theft from Auto	12
● Theft from Yard	3
● Theft from Bldg	1
● Shoplifting	16
● Other Larceny	1
● Auto Theft	1
● Snatching/PickPkt	0
Total	42



Older incidents slightly smaller

Beat 9

Part I Incidents Last 28 Days

Note: The
Enclave
subdivision
is now in
Beat 7

● Robbery	3
● Aggravated Assault	3
● Rape	0
● Burglary	1
● Theft from Auto	5
● Theft from Yard	1
● Theft from Building	3
● Shoplifting	0
● Other Larceny	2
● Auto Theft	6
● Snatching/PickPkt	1
Total	25

