

Beat 1

Part I Incidents Last 28 Days

● Robbery	0
● Aggravated Assault	0
● Rape	0
● Burglary	1
● Theft from Auto	2
● Theft from Yard	0
● Theft from Building	2
● Shoplifting	4
● Other Larceny	0
● Auto Theft	0
● Snatching/PickPkt	0
Total	9

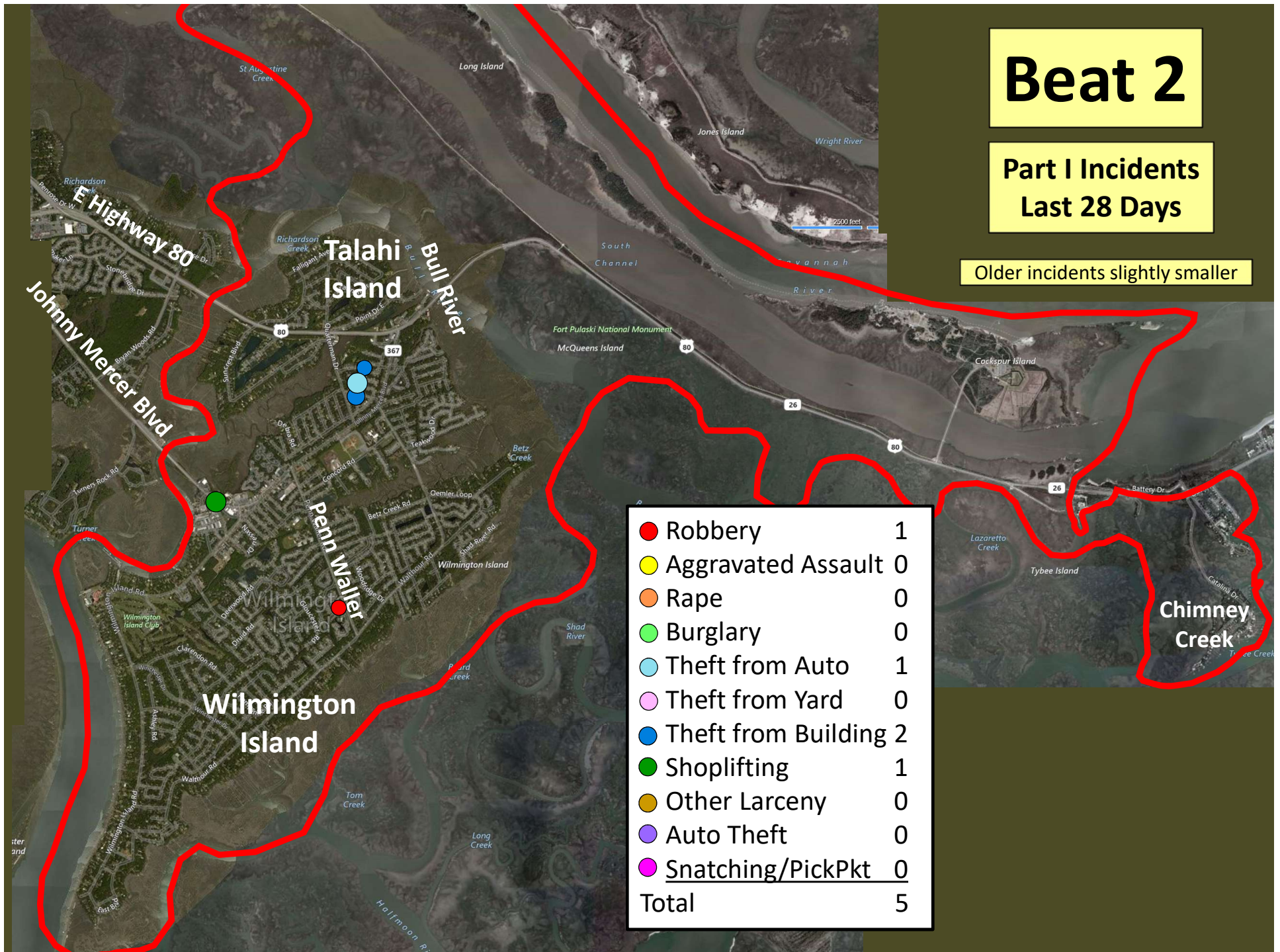
Older incidents slightly smaller

Beat 2

Part I Incidents Last 28 Days

Older incidents slightly smaller

● Robbery	1
● Aggravated Assault	0
● Rape	0
● Burglary	0
● Theft from Auto	1
● Theft from Yard	0
● Theft from Building	2
● Shoplifting	1
● Other Larceny	0
● Auto Theft	0
● Snatching/PickPkt	0
Total	5

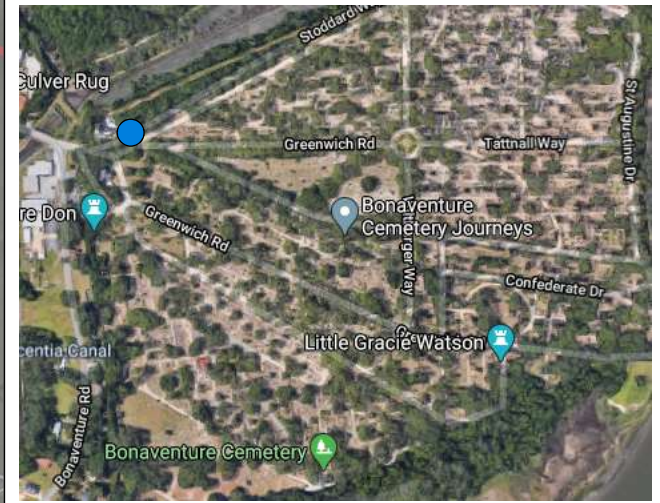


Beat 3

● Robbery	1
● Aggravated Assault	1
● Rape	0
● Burglary	1
● Theft from Auto	1
● Theft from Yard	0
● Theft from Building	2
● Shoplifting	0
● Other Larceny	0
● Auto Theft	0
● Snatching/PickPkt	0
Total	6

Part I Incidents Last 28 Days

Older incidents slightly smaller



Beat 4

Part I Incidents Last 28 Days

Robbery	0
Aggravated Assault	0
Rape	0
Burglary	0
Theft from Auto	1
Theft from Yard	0
Theft from Building	0
Shoplifting	2
Other Larceny	1
Auto Theft	0
Snatching/PickPkt	0
Total	4

Older incidents slightly smaller

The map displays the following locations and roads:

- Locations:** Halcyon Bluff, Isle of Hope, Wormsloe, Pin Point, Skidaway Island Station.
- Roads:** E Montgomery Cross Rd, Harry Truman Pkwy, Ferguson Ave, Skidaway Rd, Cornus Dr, Bluff Dr, Oak Ave, Kent Dr, Old Montgomery Rd, Mayfair, Cresthill, Hill, Keystone Dr, Whitefield Ave, Kendrick Dr, SPUR 204.
- Other Features:** Lake Mayer Park, Grimball Park, Wormsloe Historic Site, Isle of Hope River.

Beat 4

Part I Incidents
Last 28 Days

Robbery	0
Aggravated Assault	0
Rape	0
Burglary	0
Theft from Auto	1
Theft from Yard	0
Theft from Building	0
Shoplifting	2
Other Larceny	1
Auto Theft	0
Snatching/PickPkt	0
Total	4

Older incidents slightly smaller

Beat 4

Part I Incidents
Last 28 Days

Robbery	0
Aggravated Assault	0
Rape	0
Burglary	0
Theft from Auto	1
Theft from Yard	0
Theft from Building	0
Shoplifting	2
Other Larceny	1
Auto Theft	0
Snatching/PickPkt	0
Total	4

Older incidents slightly smaller

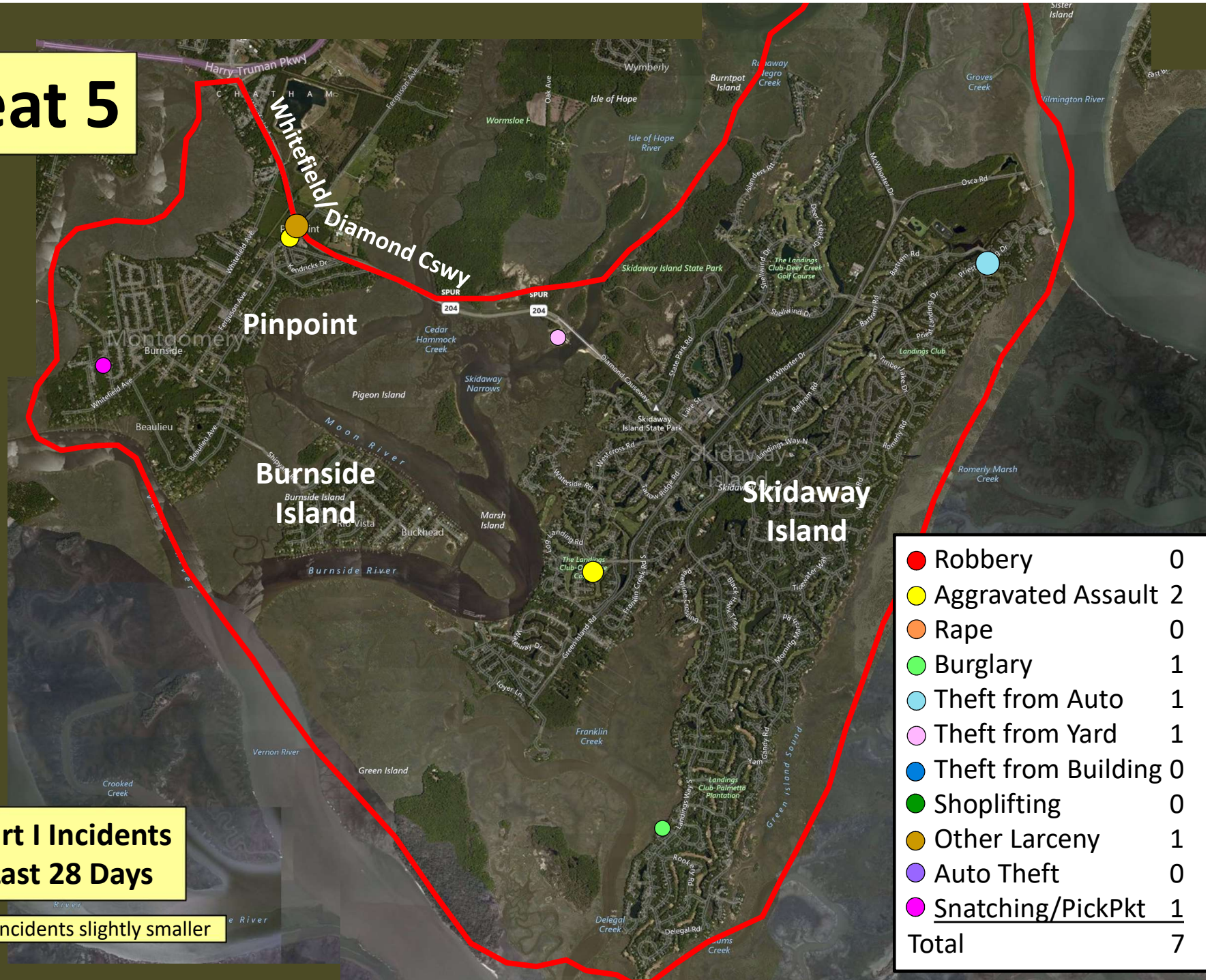
Beat 4

Part I Incidents
Last 28 Days

Robbery	0
Aggravated Assault	0
Rape	0
Burglary	0
Theft from Auto	1
Theft from Yard	0
Theft from Building	0
Shoplifting	2
Other Larceny	1
Auto Theft	0
Snatching/PickPkt	0
Total	4

Older incidents slightly smaller

Beat 5



**Part I Incidents
Last 28 Days**

Older incidents slightly smaller

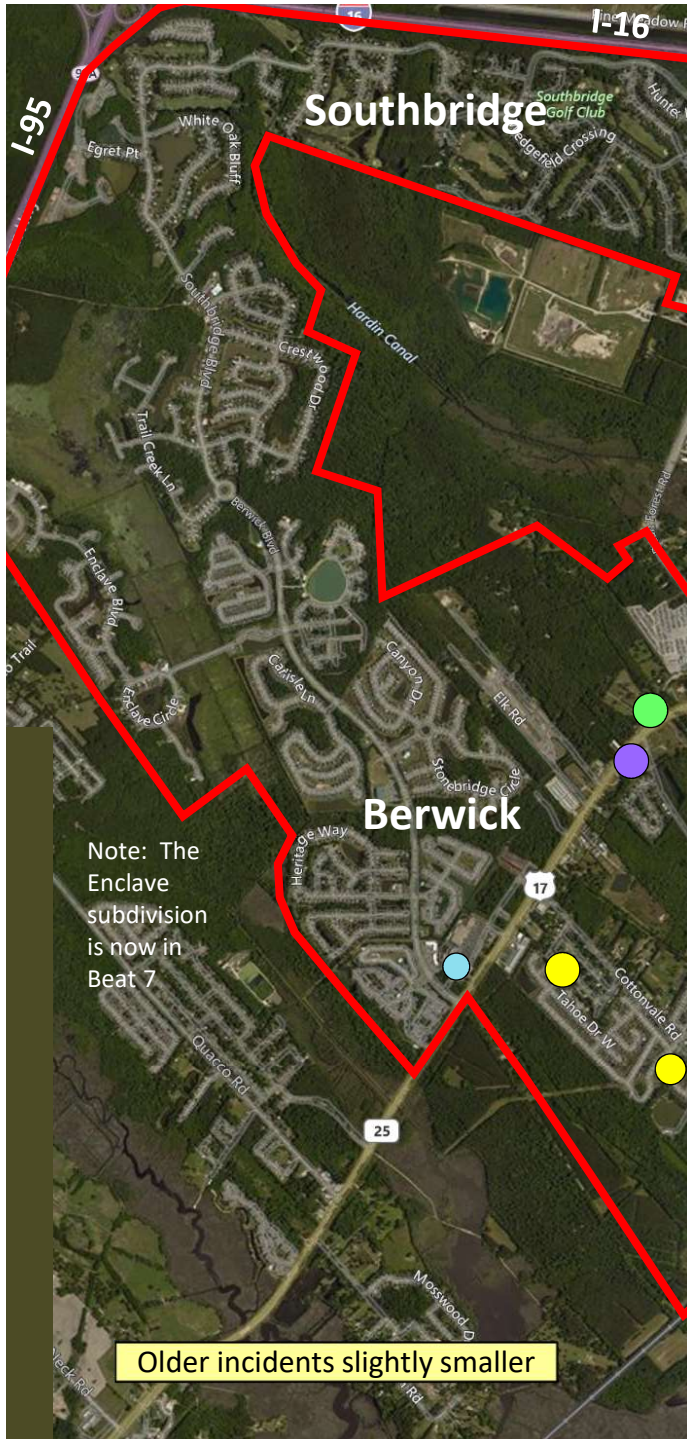
● Robbery	0
● Aggravated Assault	2
● Rape	0
● Burglary	1
● Theft from Auto	1
● Theft from Yard	1
● Theft from Building	0
● Shoplifting	0
● Other Larceny	1
● Auto Theft	0
● Snatching/PickPkt	1
Total	7

Beat 6

Part I Incidents
Last 28 Days

● Robbery	0
● Aggravated Assault	0
● Rape	0
● Burglary	0
● Theft from Auto	0
● Theft from Yard	0
● Theft from Building	0
● Shoplifting	0
● Other Larceny	0
● Auto Theft	0
● Snatching/PickPkt	0
Total	0

Older incidents slightly smaller



● Robbery	0
● Aggravated Assault	2
● Rape	0
● Burglary	8
● Theft from Auto	5
● Theft from Yard	1
● Theft from Building	1
● Shoplifting	0
● Other Larceny	0
● Auto Theft	2
● Snatching/PickPkt	0
Total	18

Beat 7

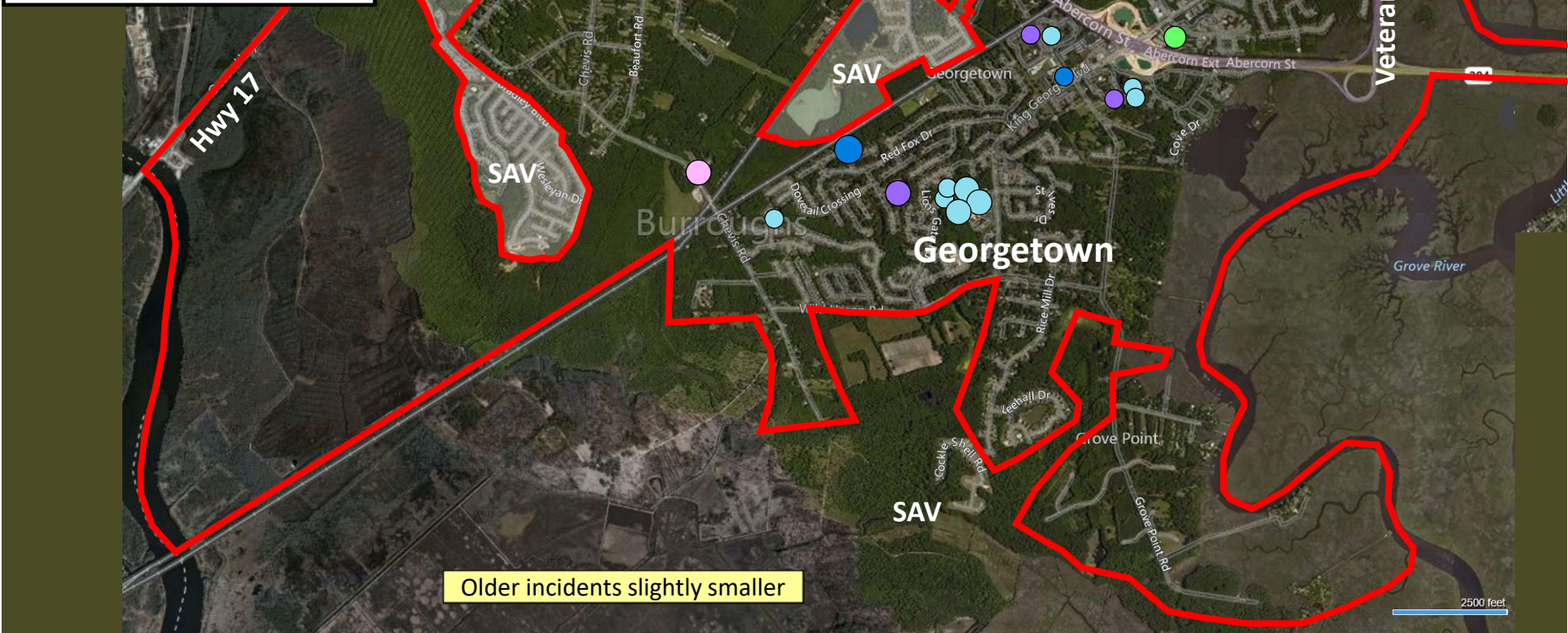
Part I Incidents
Last 28 Days



Part I Incidents
Last 28 Days

Beat 8

● Robbery	0
● Aggravated Assault	2
● Rape	0
● Burglary	3
● Theft from Auto	12
● Theft from Yard	1
● Theft from Bldg	3
● Shoplifting	7
● Other Larceny	1
● Auto Theft	4
● Snatching/PickPkt	0
Total	32



Older incidents slightly smaller

Beat 9

Part I Incidents Last 28 Days

Note: The
Enclave
subdivision
is now in
Beat 7

● Homicide	1
● Robbery	2
● Aggravated Assault	3
● Rape	0
● Burglary	8
● Theft from Auto	4
● Theft from Yard	2
● Theft from Building	2
● Shoplifting	3
● Other Larceny	1
● Auto Theft	2
● Snatching/PickPkt	0
Total	28

