

Beat 1

Part I Incidents Last 28 Days

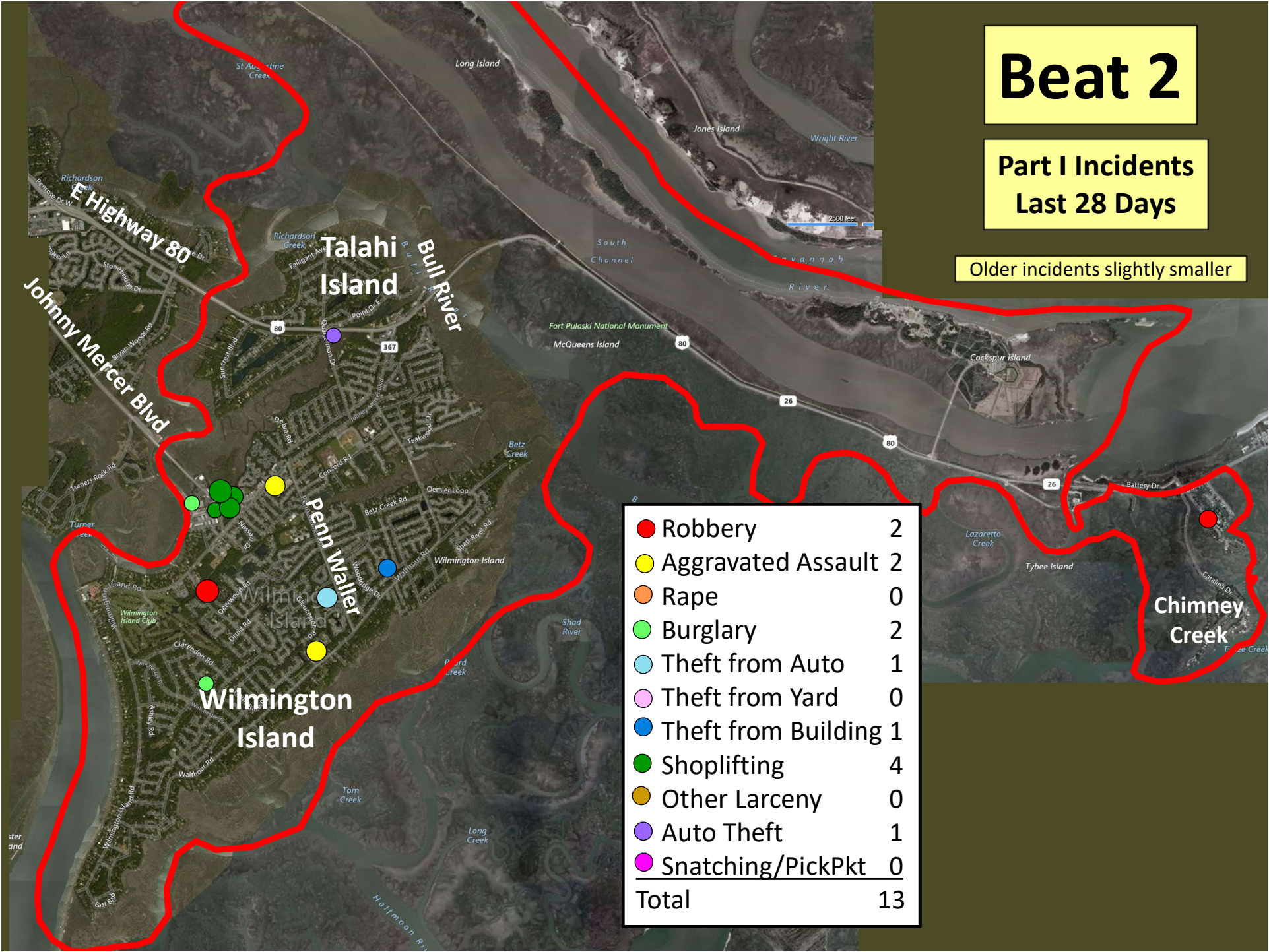
○ Arson	2
● Robbery	0
● Aggravated Assault	1
● Rape	0
● Burglary	0
● Theft from Auto	2
● Theft from Yard	2
● Theft from Building	0
● Shoplifting	4
● Other Larceny	0
● Auto Theft	2
● Snatching/PickPkt	0
Total	13

Older incidents slightly smaller

Beat 2

Part I Incidents
Last 28 Days

Older incidents slightly smaller



The map displays Beat 2, which includes Talahi Island, Penn Weller, Wilmington Island, and Chimney Creek. A red outline delineates the beat's boundary. Various streets and landmarks are labeled, including E Highway 80, Johnny Mercer Blvd, Bull River, and Fort Pulaski National Monument. Incident locations are marked with colored dots: red for Robbery, yellow for Aggravated Assault, orange for Rape, green for Burglary, light blue for Theft from Auto, pink for Theft from Yard, dark blue for Theft from Building, dark green for Shoplifting, gold for Other Larceny, purple for Auto Theft, and magenta for Snatching/PickPkt. A scale bar indicates 2500 feet.

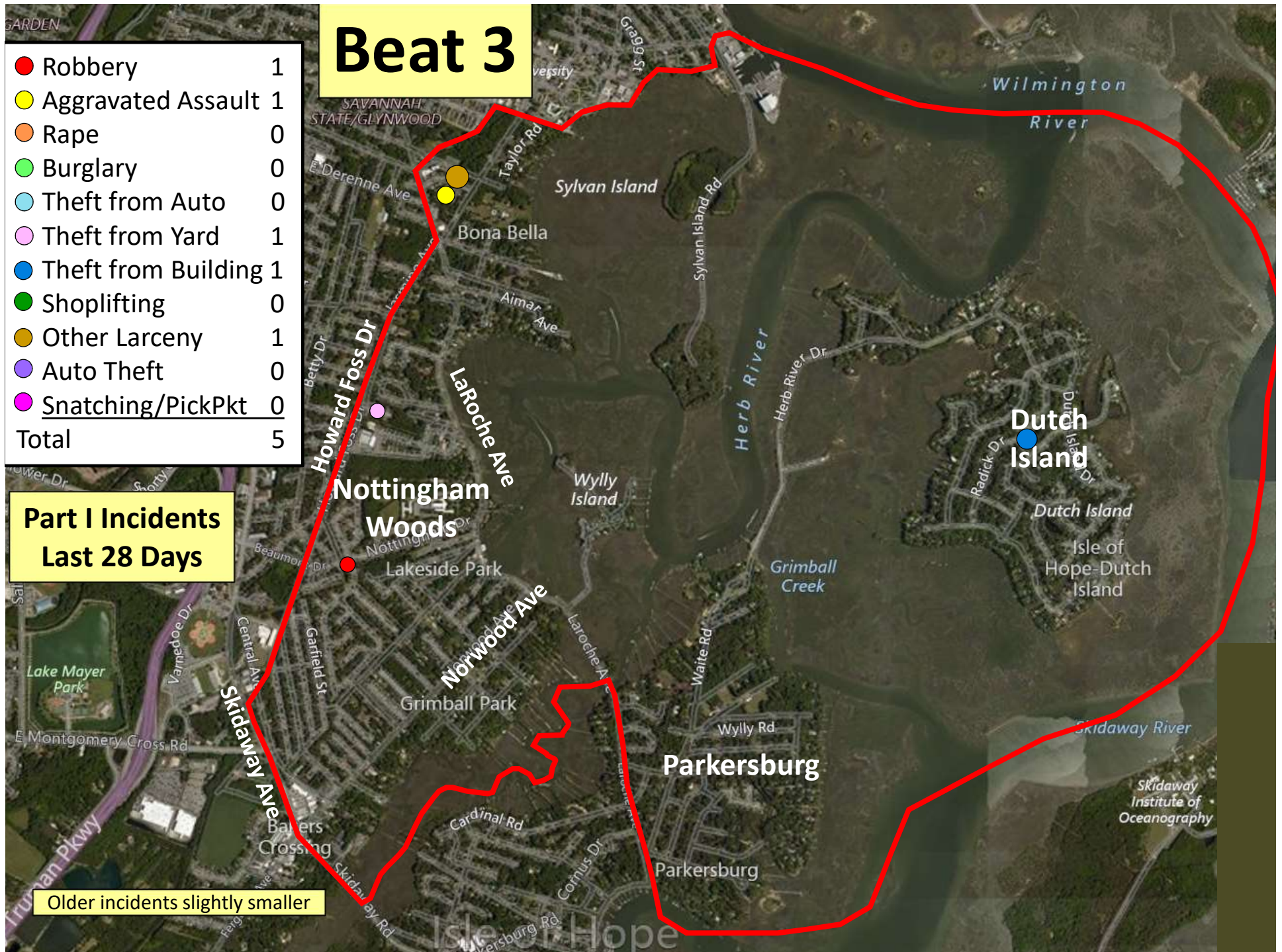
Robbery	2
Aggravated Assault	2
Rape	0
Burglary	2
Theft from Auto	1
Theft from Yard	0
Theft from Building	1
Shoplifting	4
Other Larceny	0
Auto Theft	1
Snatching/PickPkt	0
Total	13

Beat 3

● Robbery	1
● Aggravated Assault	1
● Rape	0
● Burglary	0
● Theft from Auto	0
● Theft from Yard	1
● Theft from Building	1
● Shoplifting	0
● Other Larceny	1
● Auto Theft	0
● Snatching/PickPkt	0
Total	5

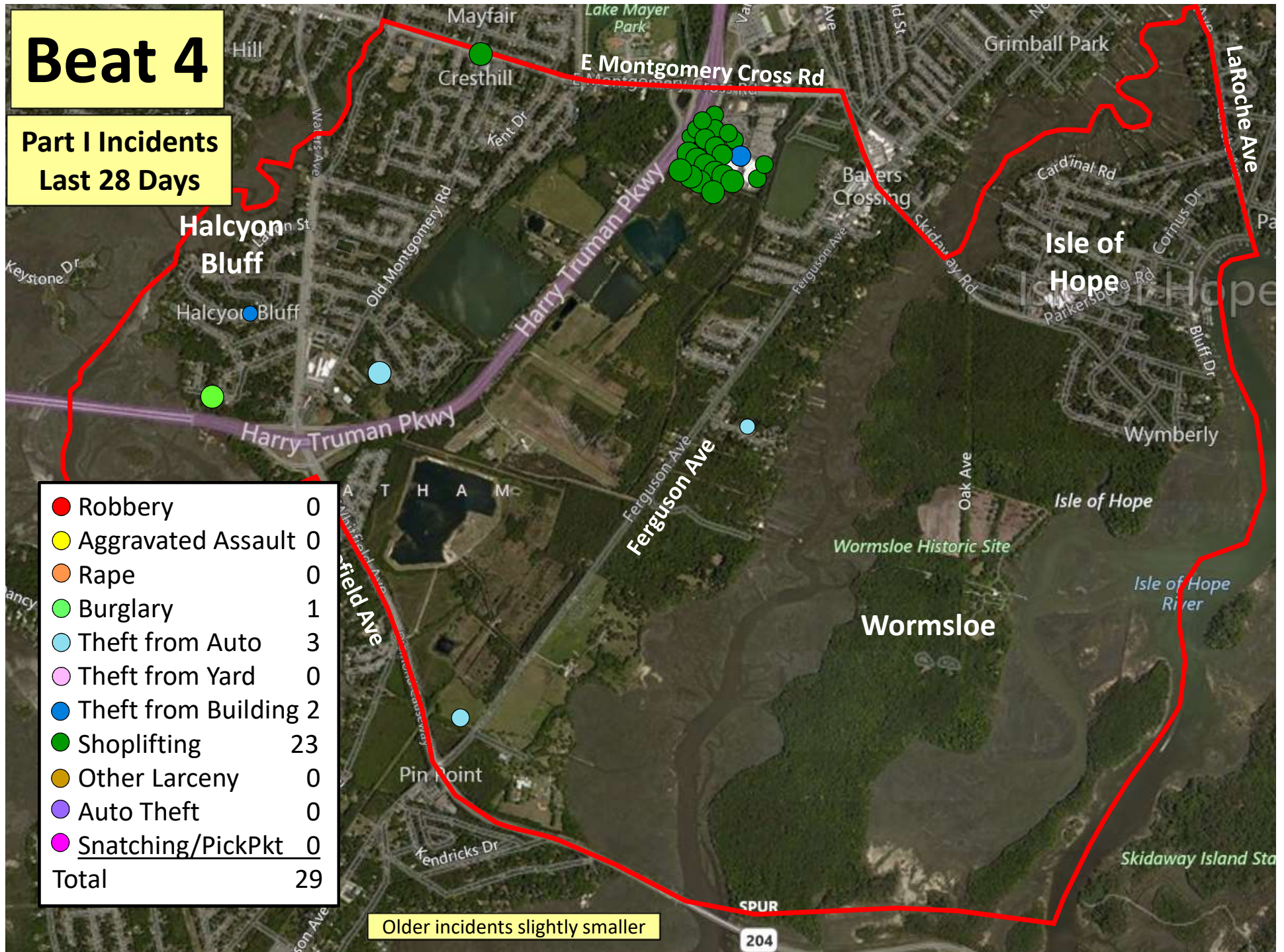
Part I Incidents Last 28 Days

Older incidents slightly smaller

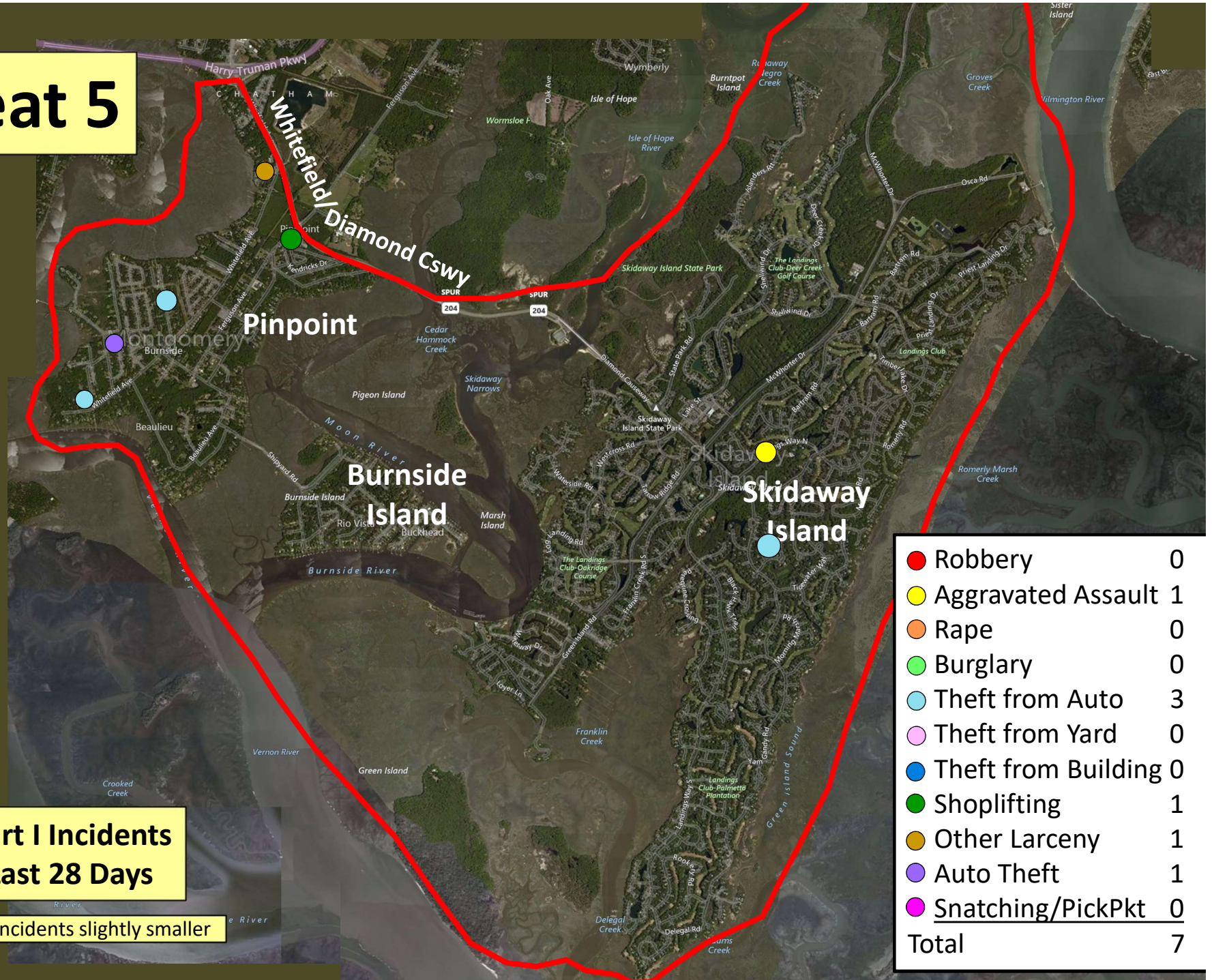


Beat 4

Part I Incidents
Last 28 Days



Beat 5



**Part I Incidents
Last 28 Days**

Older incidents slightly smaller

● Robbery	0
● Aggravated Assault	1
● Rape	0
● Burglary	0
● Theft from Auto	3
● Theft from Yard	0
● Theft from Building	0
● Shoplifting	1
● Other Larceny	1
● Auto Theft	1
● Snatching/PickPkt	0
Total	7

Beat 6

Part I Incidents
Last 28 Days

● Robbery	0
● Aggravated Assault	0
● Rape	0
● Burglary	0
● Theft from Auto	0
● Theft from Yard	0
● Theft from Building	0
● Shoplifting	0
● Other Larceny	1
● Auto Theft	0
● Snatching/PickPkt	0
Total	1

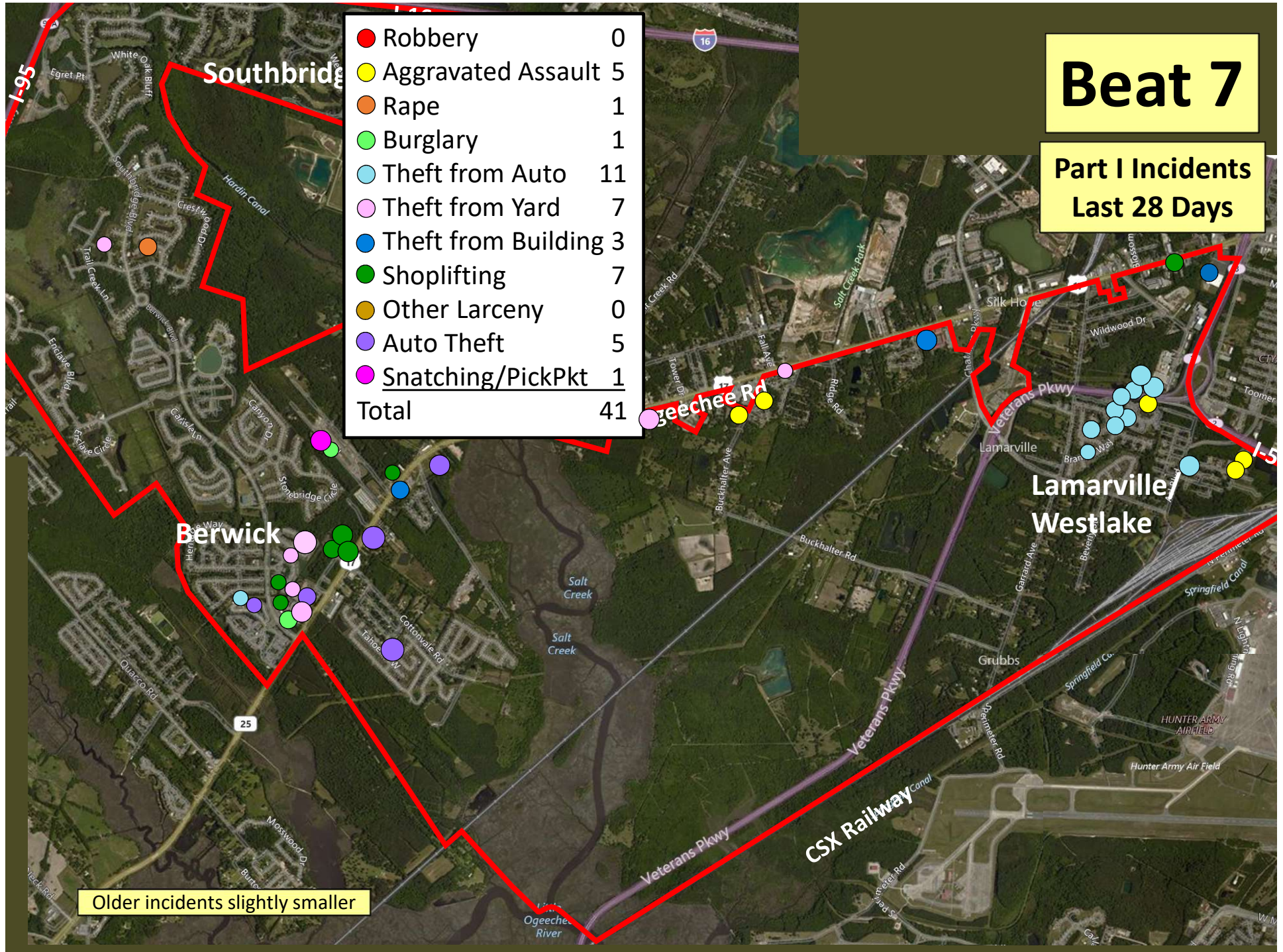
Older incidents slightly smaller

Beat 7

Part I Incidents
Last 28 Days

● Robbery	0
● Aggravated Assault	5
● Rape	1
● Burglary	1
● Theft from Auto	11
● Theft from Yard	7
● Theft from Building	3
● Shoplifting	7
● Other Larceny	0
● Auto Theft	5
● Snatching/PickPkt	1
Total	41

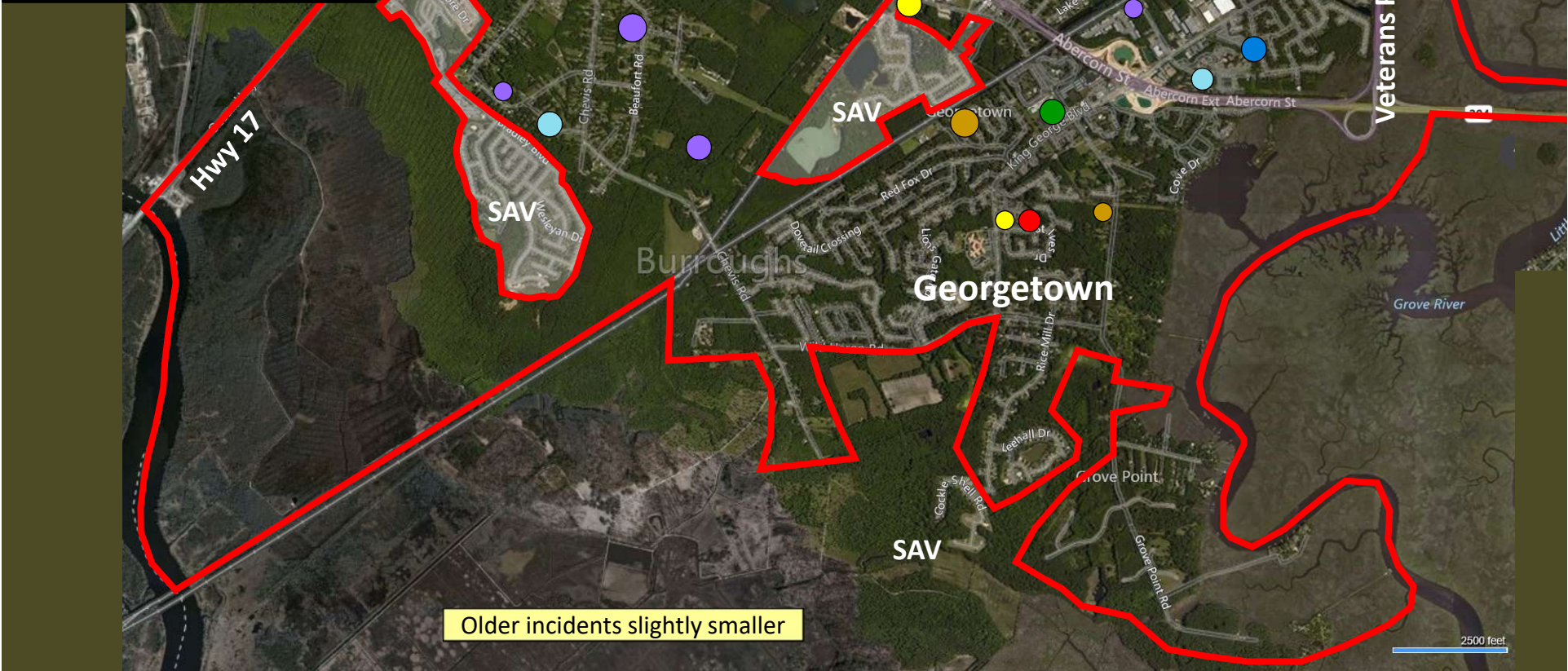
Older incidents slightly smaller



Part I Incidents
Last 28 Days

Beat 8

● Robbery	1
● Aggravated Assault	3
● Rape	0
● Burglary	2
● Theft from Auto	9
● Theft from Yard	0
● Theft from Bldg	1
● Shoplifting	15
● Other Larceny	2
● Auto Theft	5
Total	38



Older incidents slightly smaller

Beat 9

Part I Incidents Last 28 Days

Note: The
Enclave
subdivision
is now in
Beat 7

● Robbery	1
● Aggravated Assault	3
● Rape	1
● Burglary	2
● Theft from Auto	6
● Theft from Yard	9
● Theft from Building	1
● Shoplifting	0
● Other Larceny	1
● Auto Theft	6
● Snatching/PickPkt	0
Total	30

