

Beat 1

Part I Incidents Last 28 Days

● Robbery	0
● Aggravated Assault	1
● Rape	0
● Burglary	0
● Theft from Auto	5
● Theft from Yard	0
● Theft from Building	0
● Shoplifting	1
● Other Larceny	1
● Auto Theft	0
● Snatching/PickPkt	0
Total	8

Older incidents slightly smaller

Beat 2

Part I Incidents Last 28 Days

Older incidents slightly smaller



The map shows Beat 2, which includes Talahi Island, Wilmington Island, and parts of the surrounding area. A red outline delineates the beat's boundary. Various streets and landmarks are labeled, including E Highway 80, Johnny Mercer Blvd, Bull River, and Fort Pulaski National Monument. Colored dots indicate the locations of incidents: Robbery (red), Aggravated Assault (yellow), Rape (orange), Burglary (green), Theft from Auto (light blue), Theft from Yard (pink), Theft from Building (dark blue), Shoplifting (dark green), Other Larceny (brown), Auto Theft (purple), and Snatching/PickPkt (magenta). A scale bar indicates 2500 feet.

Robbery	0
Aggravated Assault	1
Rape	0
Burglary	2
Theft from Auto	2
Theft from Yard	1
Theft from Building	3
Shoplifting	0
Other Larceny	1
Auto Theft	2
Snatching/PickPkt	0
Total	12

Beat 3

● Robbery	0
● Aggravated Assault	0
● Rape	0
● Burglary	0
● Theft from Auto	4
● Theft from Yard	0
● Theft from Building	0
● Shoplifting	0
● Other Larceny	0
● Auto Theft	1
● Snatching/PickPkt	0
Total	5

Part I Incidents Last 28 Days

Older incidents slightly smaller

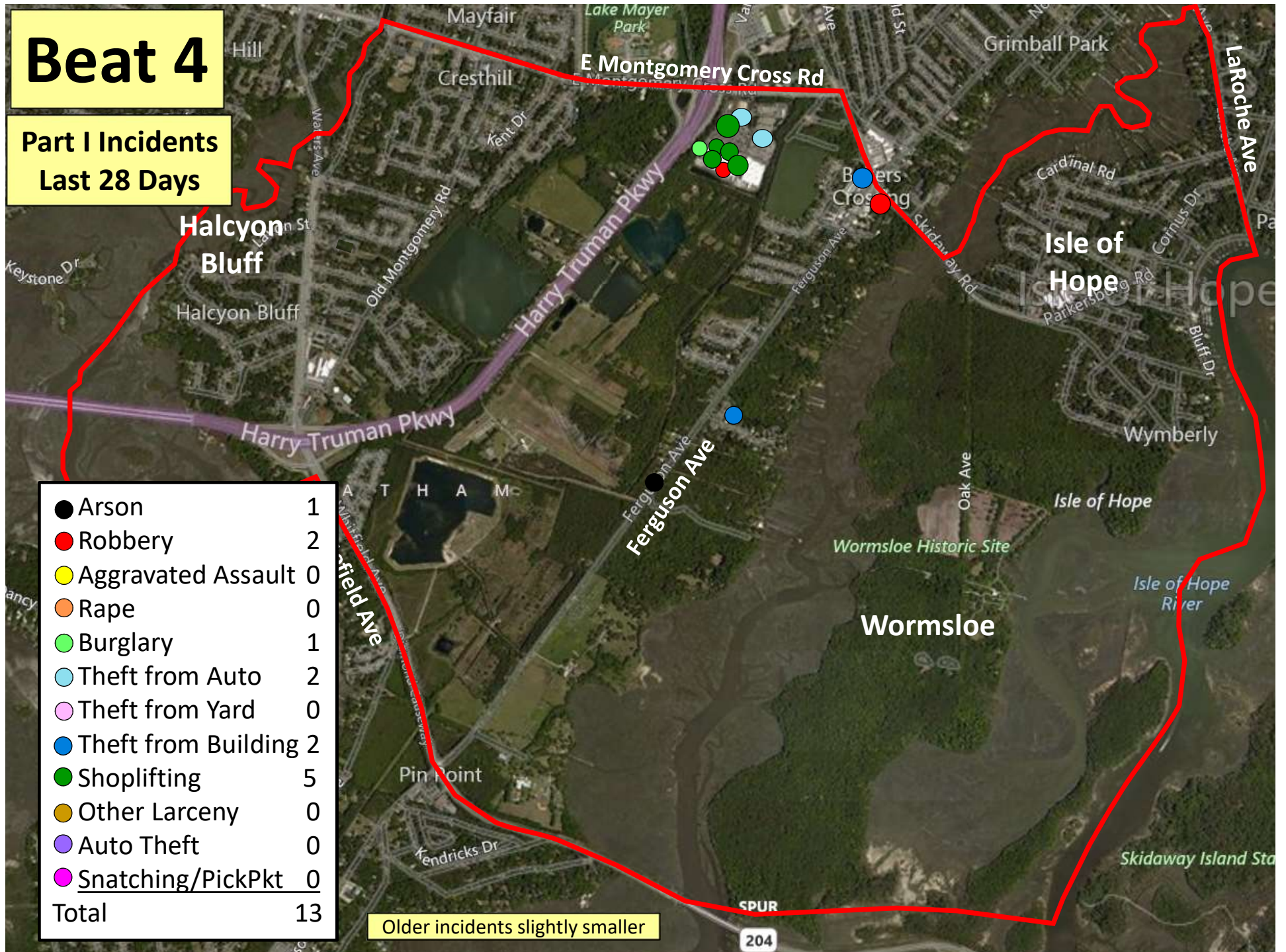


Beat 4

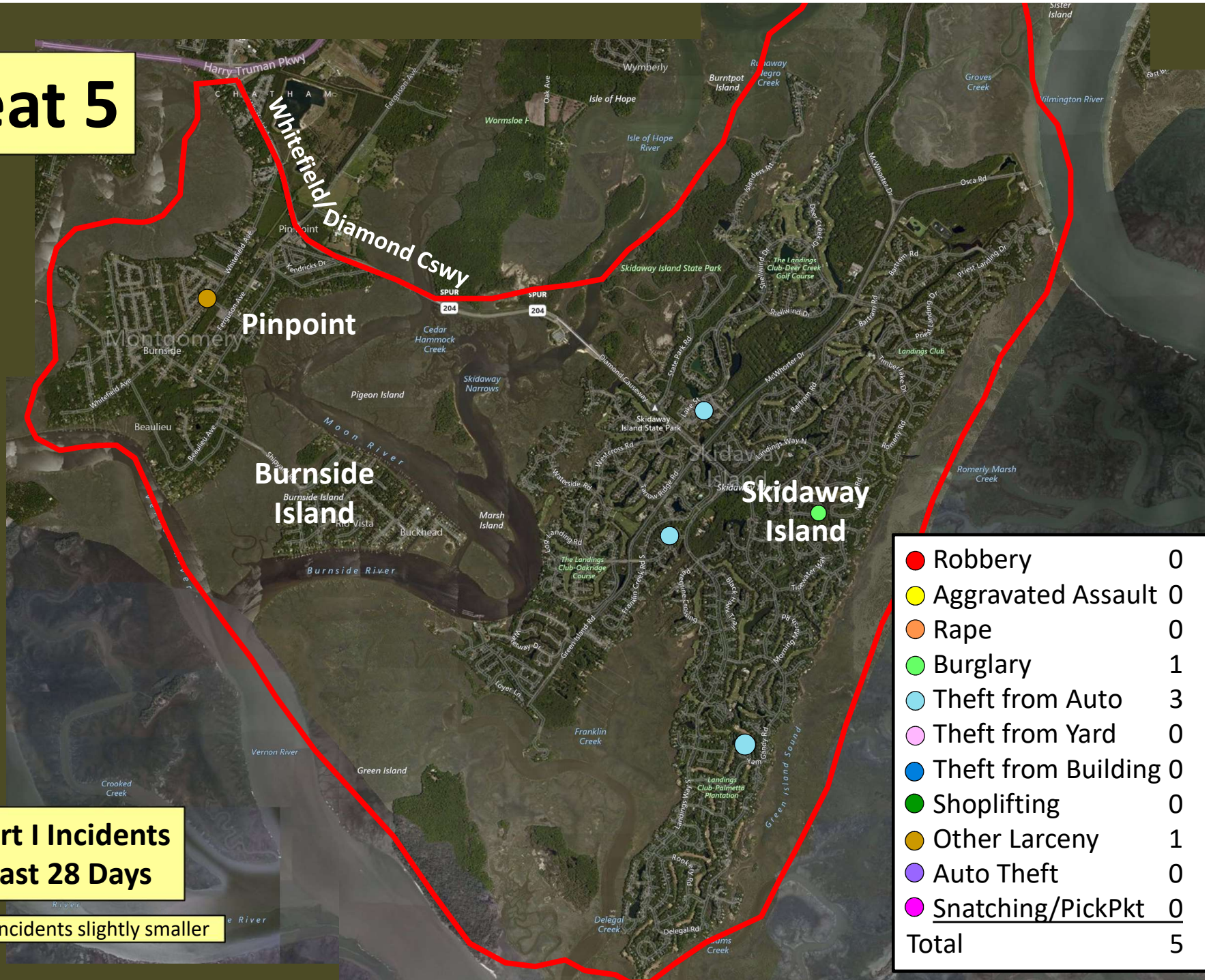
Part I Incidents Last 28 Days

● Arson	1
● Robbery	2
● Aggravated Assault	0
● Rape	0
● Burglary	1
● Theft from Auto	2
● Theft from Yard	0
● Theft from Building	2
● Shoplifting	5
● Other Larceny	0
● Auto Theft	0
● Snatching/PickPkt	0
Total	13

Older incidents slightly smaller



Beat 5



Part I Incidents
Last 28 Days

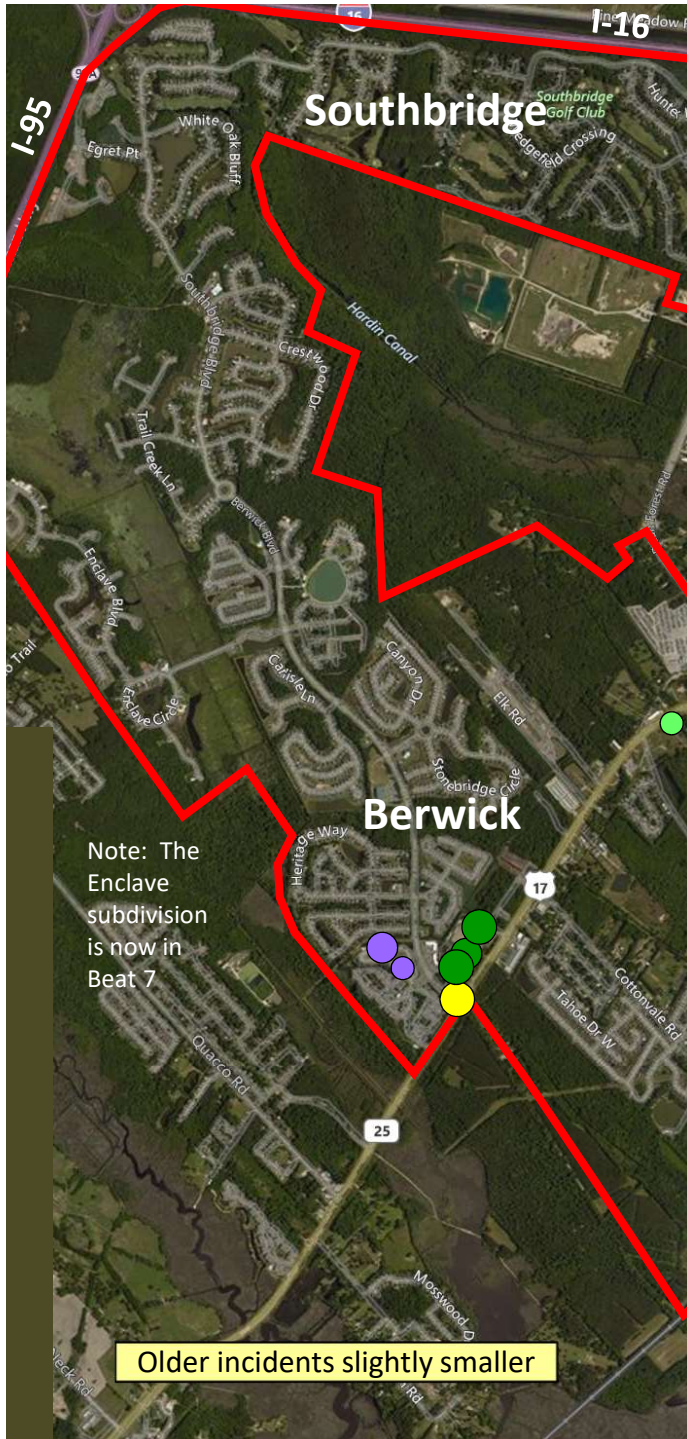
Older incidents slightly smaller

Beat 6

Part I Incidents
Last 28 Days

● Robbery	0
● Aggravated Assault	0
● Rape	0
● Burglary	0
● Theft from Auto	0
● Theft from Yard	0
● Theft from Building	0
● Shoplifting	0
● Other Larceny	0
● Auto Theft	0
● Snatching/PickPkt	0
Total	0

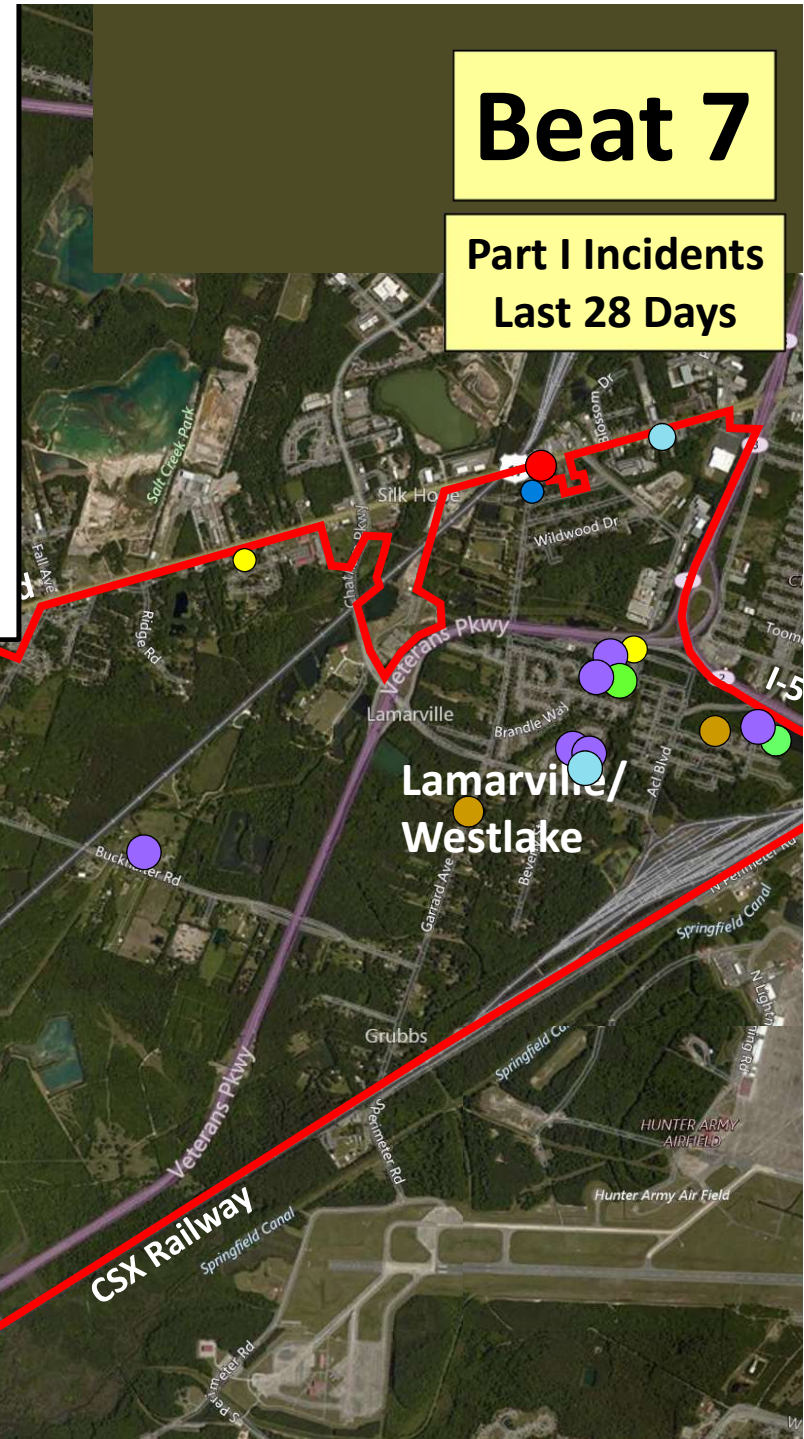
Older incidents slightly smaller



● Robbery	1
● Aggravated Assault	3
● Rape	0
● Burglary	3
● Theft from Auto	2
● Theft from Yard	0
● Theft from Building	1
● Shoplifting	3
● Other Larceny	2
● Auto Theft	8
● Snatching/PickPkt	0
Total	23

Beat 7

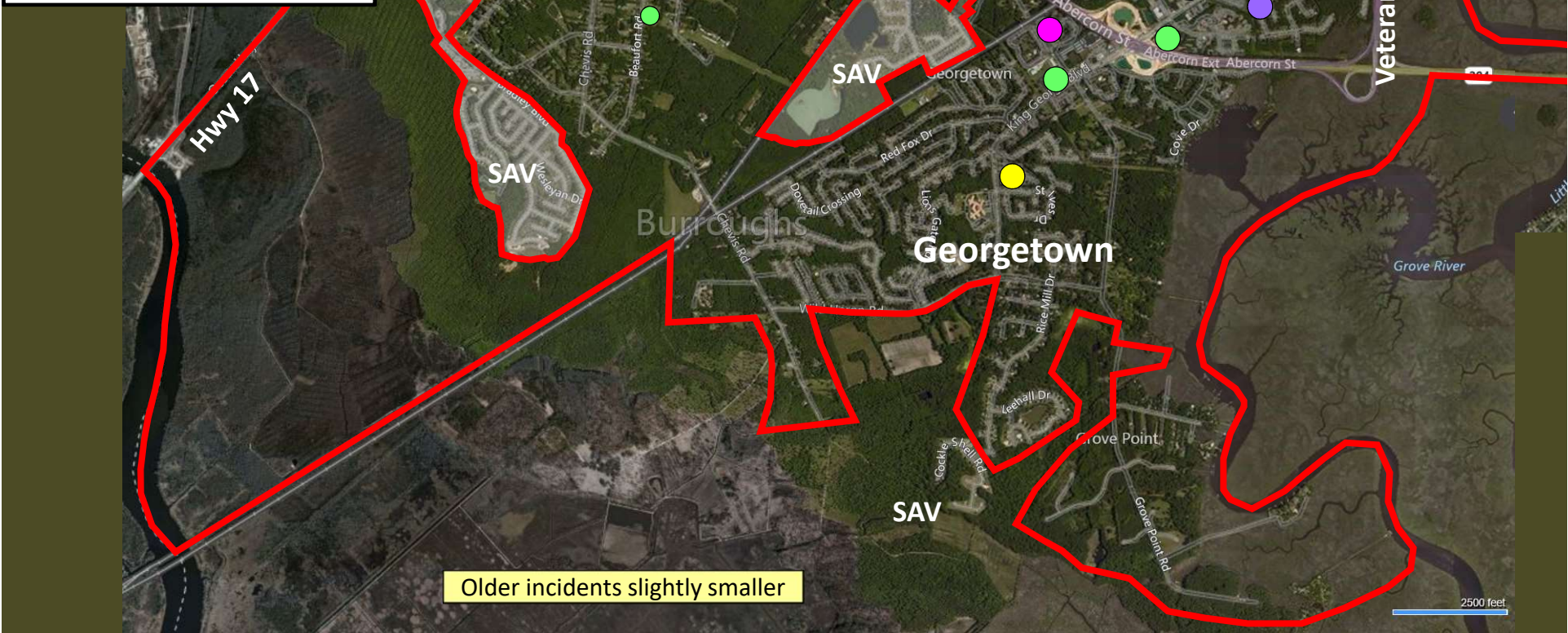
Part I Incidents
Last 28 Days



Part I Incidents
Last 28 Days

Beat 8

● Robbery	0
● Aggravated Assault	1
● Rape	0
● Burglary	7
● Theft from Auto	0
● Theft from Yard	0
● Theft from Bldg	1
● Shoplifting	5
● Other Larceny	0
● Auto Theft	2
● Snatching/PickPkt	0
Total	16



Older incidents slightly smaller

Beat 9

Part I Incidents Last 28 Days

Note: The
Enclave
subdivision
is now in
Beat 7

● Robbery	1
● Aggravated Assault	3
● Rape	0
● Burglary	3
● Theft from Auto	8
● Theft from Yard	0
● Theft from Building	3
● Shoplifting	3
● Other Larceny	0
● Auto Theft	4
● Snatching/PickPkt	0
Total	25

