

Total Jurisdiction Part I Counts	Weekly 03/18/20 to 03/24/20			28-Day Period Ending 03/24/20			Year-to-Date through March 24		
	Last 7 Days	Avg 7 Days ¹	+/-	Last 28 Days	Avg 28 Days ¹	+/-	2020	2019	+/-
Homicide	1	0.1	0.9	1	0.3	0.7	1	0	1
Rape (Carnal) ²	0	0.4	-0.4	0	1.7	-1.7	1	5	-4
Forced Sodomy & Other Penetration ³	0	0.2	-0.2	0	0.6	-0.6	7	2	5
Commercial Robbery	0	0.3	-0.3	0	1.1	-1.1	3	5	-2
Street Robbery	0	0.3	-0.3	1	1.2	-0.2	5	9	-4
Residential Robbery	0	0.2	-0.2	0	0.7	-0.7	2	2	0
Aggravated Assault, Domestic, Gun	0	0.2	-0.2	0	0.7	-0.7	0	1	-1
Aggravated Assault, Domestic, Other	1	0.8	0.2	2	3.3	-1.3	3	7	-4
Aggravated Assault, Non-Dom, Gun	1	0.7	0.3	4	2.7	1.3	10	5	5
Aggravated Assault, Non-Dom, Other	0	0.4	-0.4	1	1.6	-0.6	7	4	3
SUBTOTAL VIOLENT CRIME	3	3.5	-0.5	9	13.9	-4.9	39	40	-2.5%
Commercial Burglary	0	1.1	-1.1	2	4.2	-2.2	8	12	-4
Residential Burglary	6	4.3	1.7	19	17.0	2.0	52	45	7
Sudden Snatching/Pick Pocket	0	0.2	-0.2	1	0.8	0.2	2	7	-5
Shoplifting	2	4.9	-2.9	18	19.7	-1.7	61	58	3
Theft from Auto	3	9.1	-6.1	19	36.6	-17.6	94	84	10
Theft from Yard	3	3.0	0.0	4	12.1	-8.1	14	32	-18
Theft from Building	3	3.4	-0.4	12	13.5	-1.5	51	47	4
Larceny of Mail, Packages, Other	0	0.9	-0.9	2	3.5	-1.5	12	11	1
Auto Theft	1	3.5	-2.5	11	13.8	-2.8	33	38	-5
SUBTOTAL PROPERTY CRIME	18	30.3	-12.3	88	121.3	-33.3	327	334	-2.1%
TOTAL PART I CRIME	21	33.8	-12.8	97	135.2	-38.2	366	374	-2.1%

¹ Averages from 2018.

² "Legacy" definition of rape, i.e., the historical definition of rape according to UCR, prior to recent expanded definition.

³ Additional Part I rapes based on the new rape definition, as amended by the UCR, and implemented by State of Georgia on 01/01/17.

Beat 1

Part I Incidents Last 28 Days

● Robbery	0
● Aggravated Assault	0
● Rape	0
● Burglary	0
● Theft from Auto	1
● Theft from Yard	0
● Theft from Building	2
● Shoplifting	4
● Other Larceny	0
● Auto Theft	0
● Snatching/PickPkt	0
Total	7

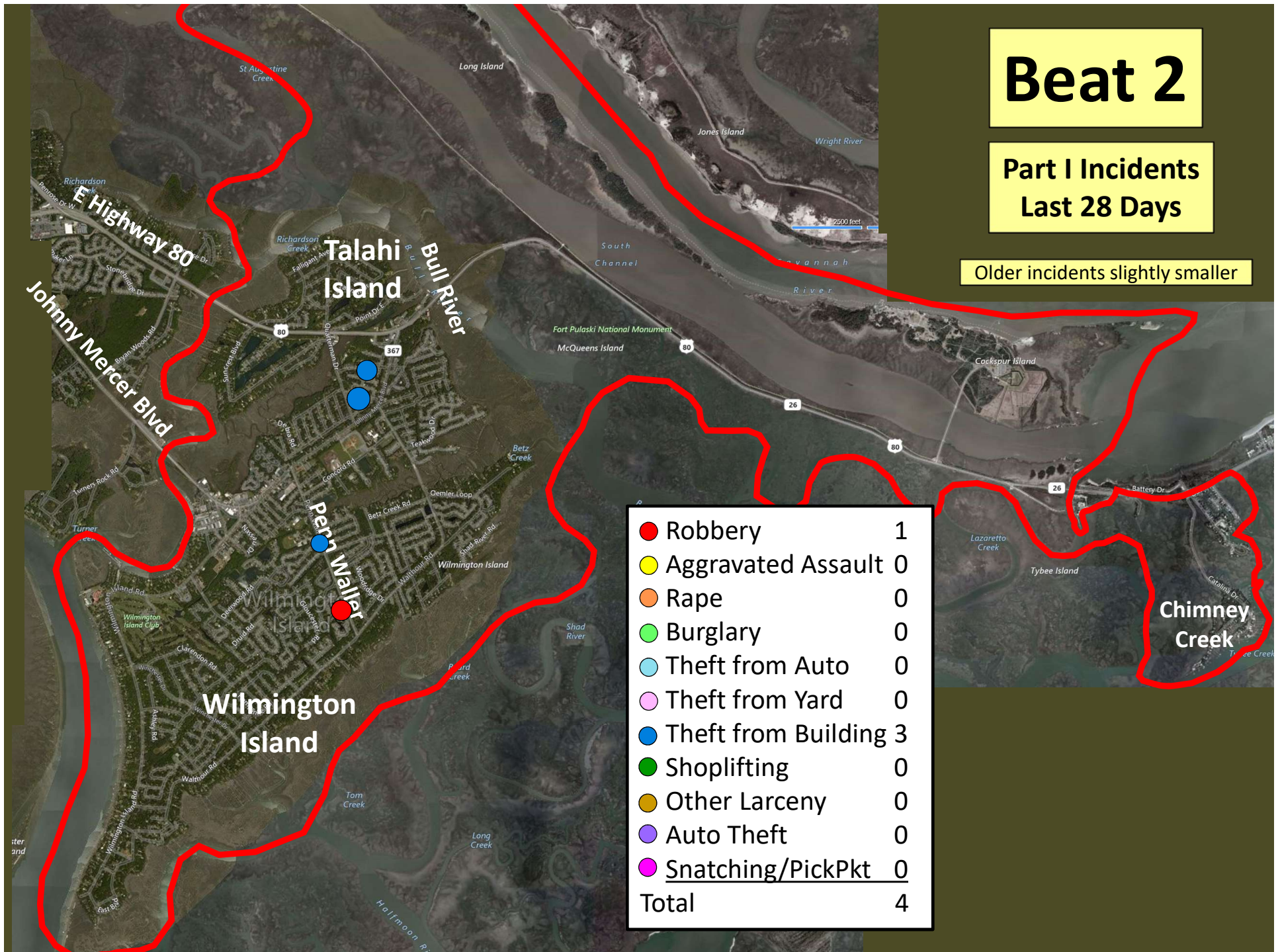
Older incidents slightly smaller

Beat 2

Part I Incidents Last 28 Days

Older incidents slightly smaller

● Robbery	1
● Aggravated Assault	0
● Rape	0
● Burglary	0
● Theft from Auto	0
● Theft from Yard	0
● Theft from Building	3
● Shoplifting	0
● Other Larceny	0
● Auto Theft	0
● Snatching/PickPkt	0
Total	4



Beat 3

● Robbery	0
● Aggravated Assault	2
● Rape	0
● Burglary	2
● Theft from Auto	3
● Theft from Yard	0
● Theft from Building	2
● Shoplifting	0
● Other Larceny	0
● Auto Theft	2
● Snatching/PickPkt	0
Total	11

Part I Incidents Last 28 Days

Older incidents slightly smaller

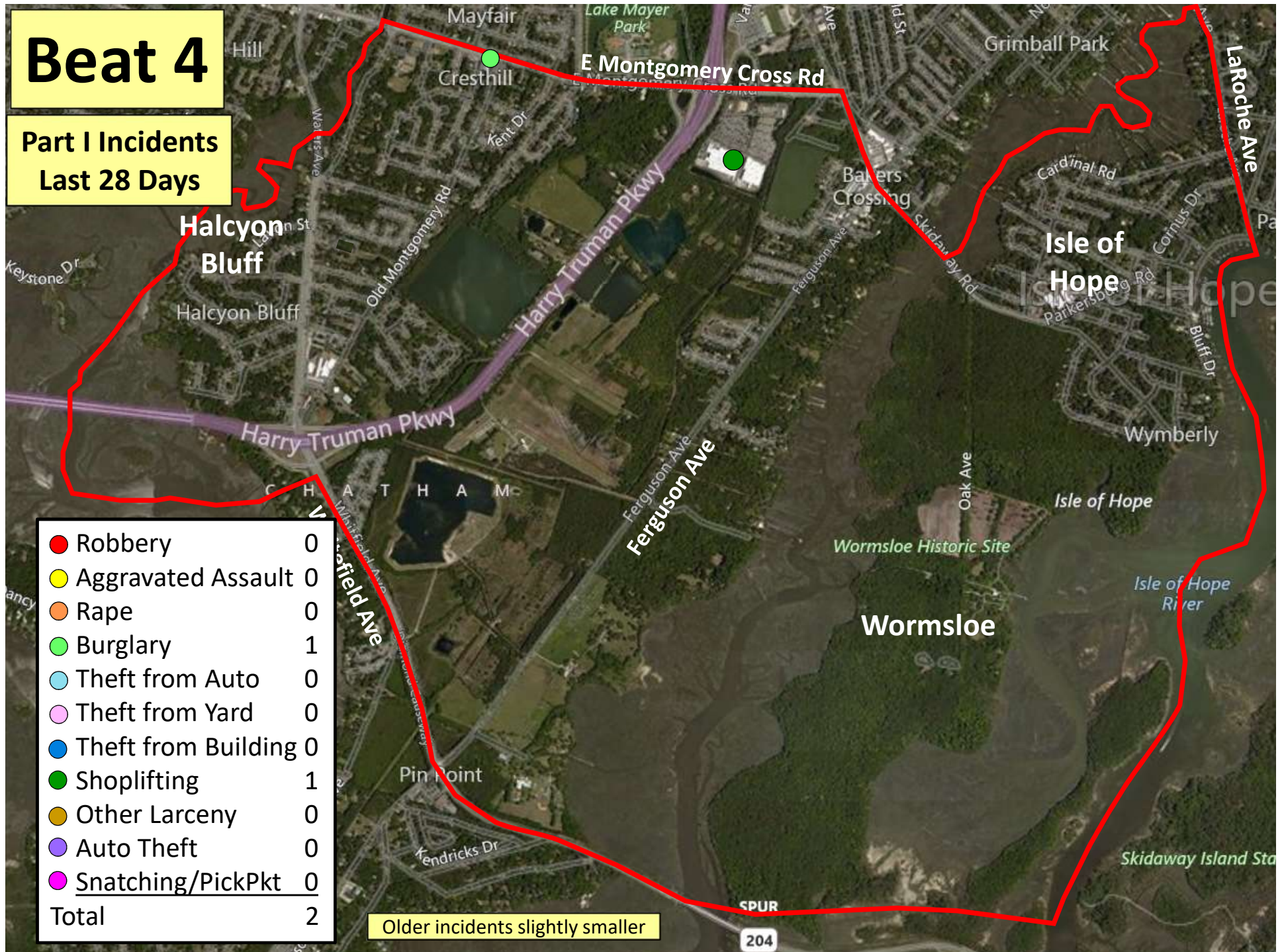


Beat 4

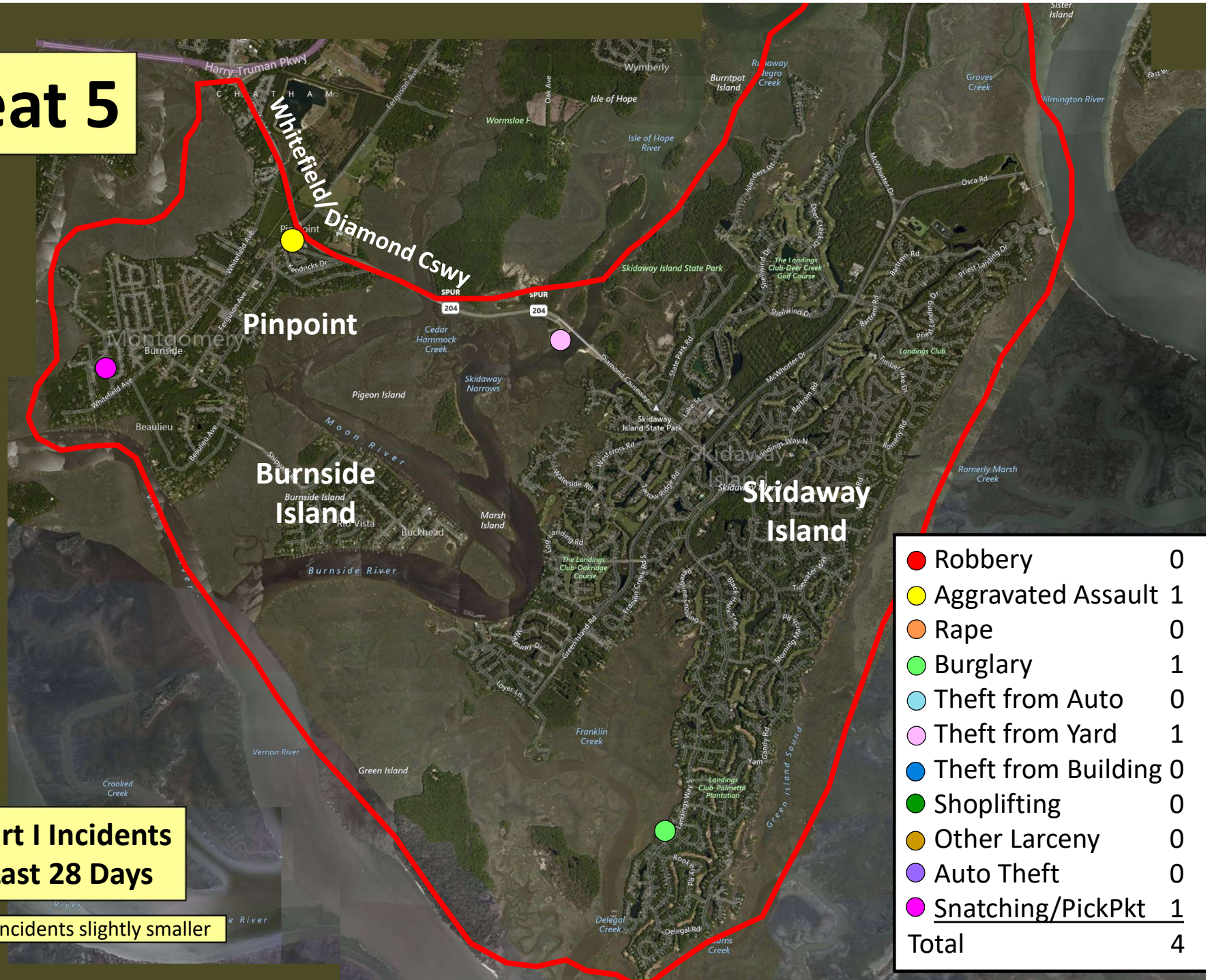
Part I Incidents Last 28 Days

● Robbery	0
● Aggravated Assault	0
● Rape	0
● Burglary	1
● Theft from Auto	0
● Theft from Yard	0
● Theft from Building	0
● Shoplifting	1
● Other Larceny	0
● Auto Theft	0
● Snatching/PickPkt	0
Total	2

Older incidents slightly smaller



Beat 5



**Part I Incidents
Last 28 Days**

Older incidents slightly smaller

● Robbery	0
● Aggravated Assault	1
● Rape	0
● Burglary	1
● Theft from Auto	0
● Theft from Yard	1
● Theft from Building	0
● Shoplifting	0
● Other Larceny	0
● Auto Theft	0
● Snatching/PickPkt	1
Total	4

Beat 6

Part I Incidents
Last 28 Days

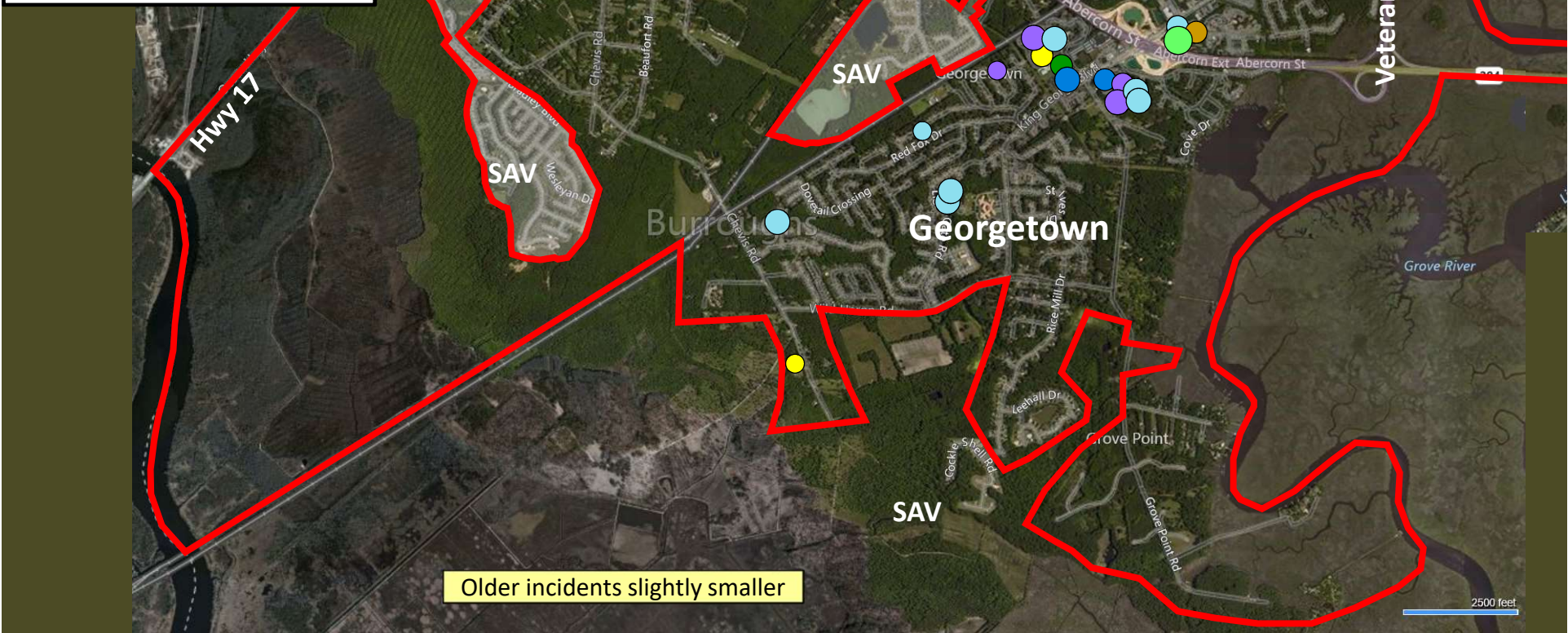
● Robbery	0
● Aggravated Assault	0
● Rape	0
● Burglary	0
● Theft from Auto	0
● Theft from Yard	0
● Theft from Building	0
● Shoplifting	0
● Other Larceny	0
● Auto Theft	0
● Snatching/PickPkt	0
Total	0

Older incidents slightly smaller

Part I Incidents
Last 28 Days

Beat 8

● Robbery	0
● Aggravated Assault	2
● Rape	0
● Burglary	3
● Theft from Auto	9
● Theft from Yard	0
● Theft from Bldg	2
● Shoplifting	6
● Other Larceny	1
● Auto Theft	5
● Snatching/PickPkt	0
Total	28



Older incidents slightly smaller

Beat 9

Part I Incidents Last 28 Days

Note: The
Enclave
subdivision
is now in
Beat 7

● Homicide	1
● Robbery	0
● Aggravated Assault	2
● Rape	0
● Burglary	9
● Theft from Auto	4
● Theft from Yard	2
● Theft from Building	1
● Shoplifting	6
● Other Larceny	0
● Auto Theft	1
● Snatching/PickPkt	0
Total	27

