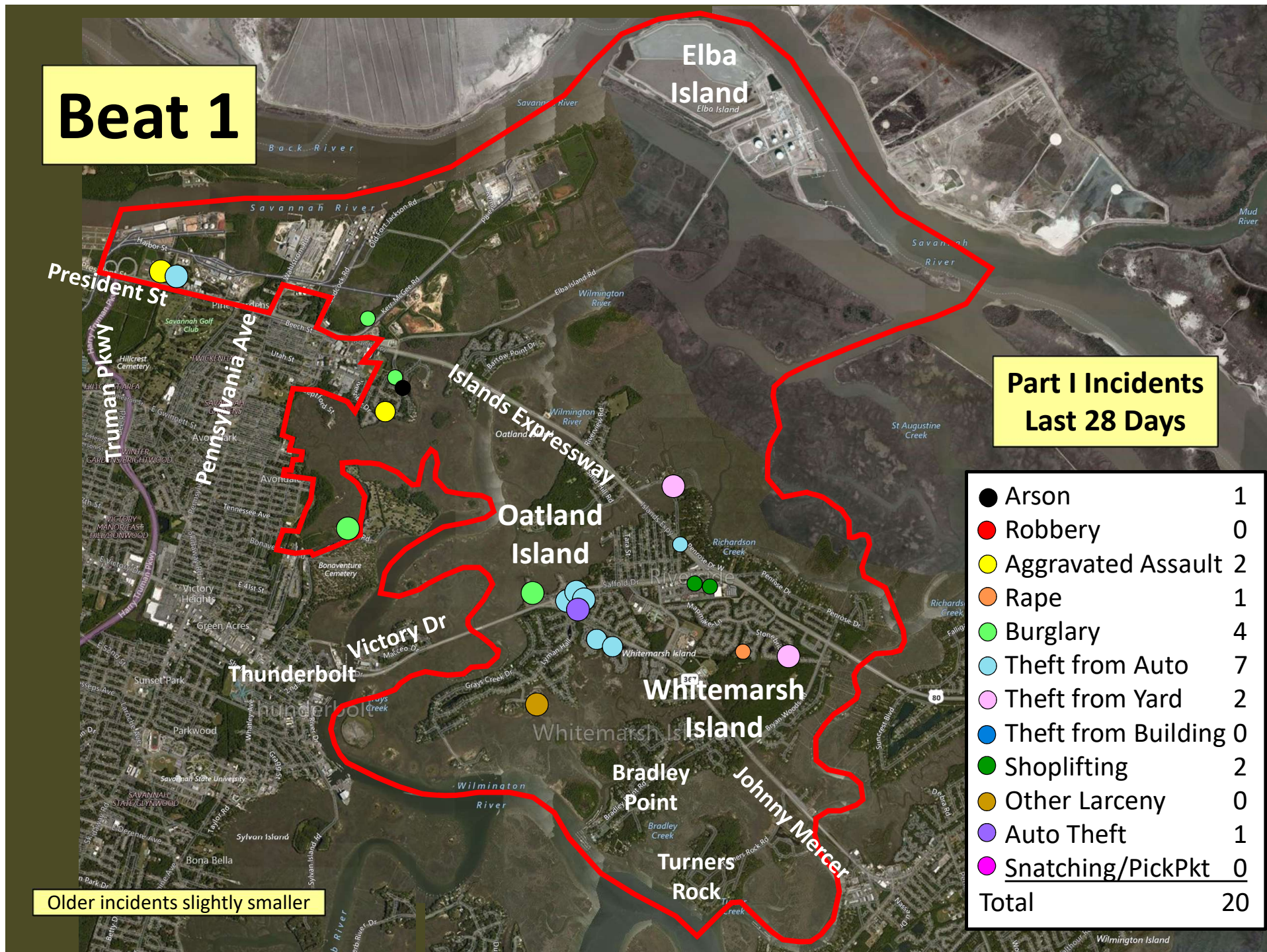


# Beat 1

## Part I Incidents Last 28 Days

● Arson	1
● Robbery	0
● Aggravated Assault	2
● Rape	1
● Burglary	4
● Theft from Auto	7
● Theft from Yard	2
● Theft from Building	0
● Shoplifting	2
● Other Larceny	0
● Auto Theft	1
● Snatching/PickPkt	0
Total	20

Older incidents slightly smaller





# Beat 2

## Part I Incidents Last 28 Days

Older incidents slightly smaller



The map displays Beat 2, which includes Talahi Island, Penn Weller Island, and Wilmington Island. A red boundary outlines the beat area. Various streets and landmarks are labeled, including E Highway 80, Johnny Mercer Blvd, Bull River, and the Savannah River. Incident locations are marked with colored circles: red for Robbery, yellow for Aggravated Assault, orange for Rape, green for Burglary, light blue for Theft from Auto, pink for Theft from Yard, dark blue for Theft from Building, dark green for Shoplifting, gold for Other Larceny, purple for Auto Theft, and magenta for Snatching/PickPkt. A legend table in the bottom right corner provides the count for each incident type.

Robbery	1
Aggravated Assault	0
Rape	1
Burglary	1
Theft from Auto	9
Theft from Yard	1
Theft from Building	0
Shoplifting	1
Other Larceny	4
Auto Theft	6
Snatching/PickPkt	0
Total	24

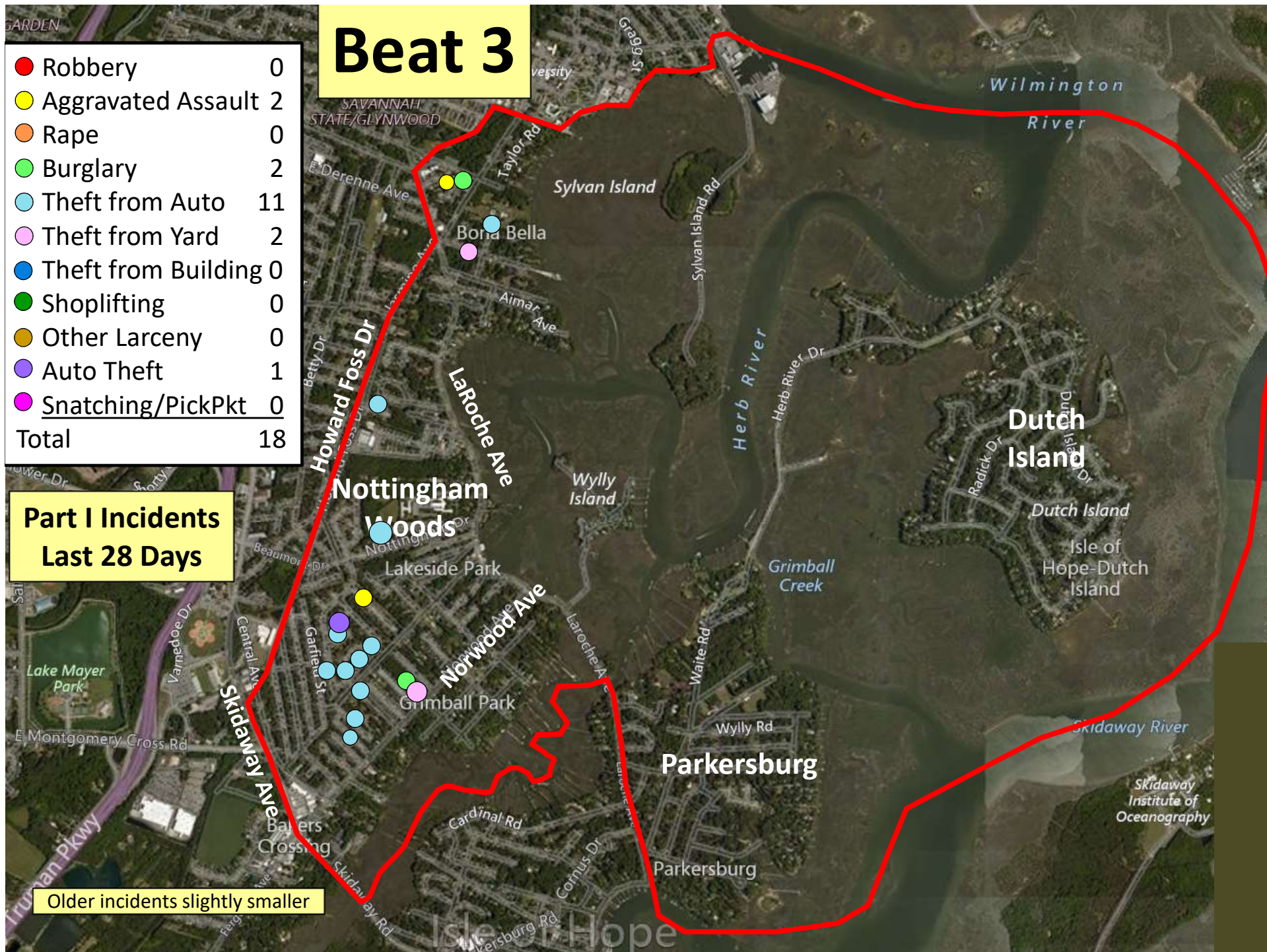


# Beat 3

● Robbery	0
● Aggravated Assault	2
● Rape	0
● Burglary	2
● Theft from Auto	11
● Theft from Yard	2
● Theft from Building	0
● Shoplifting	0
● Other Larceny	0
● Auto Theft	1
● Snatching/PickPkt	0
Total	18

## Part I Incidents Last 28 Days

Older incidents slightly smaller



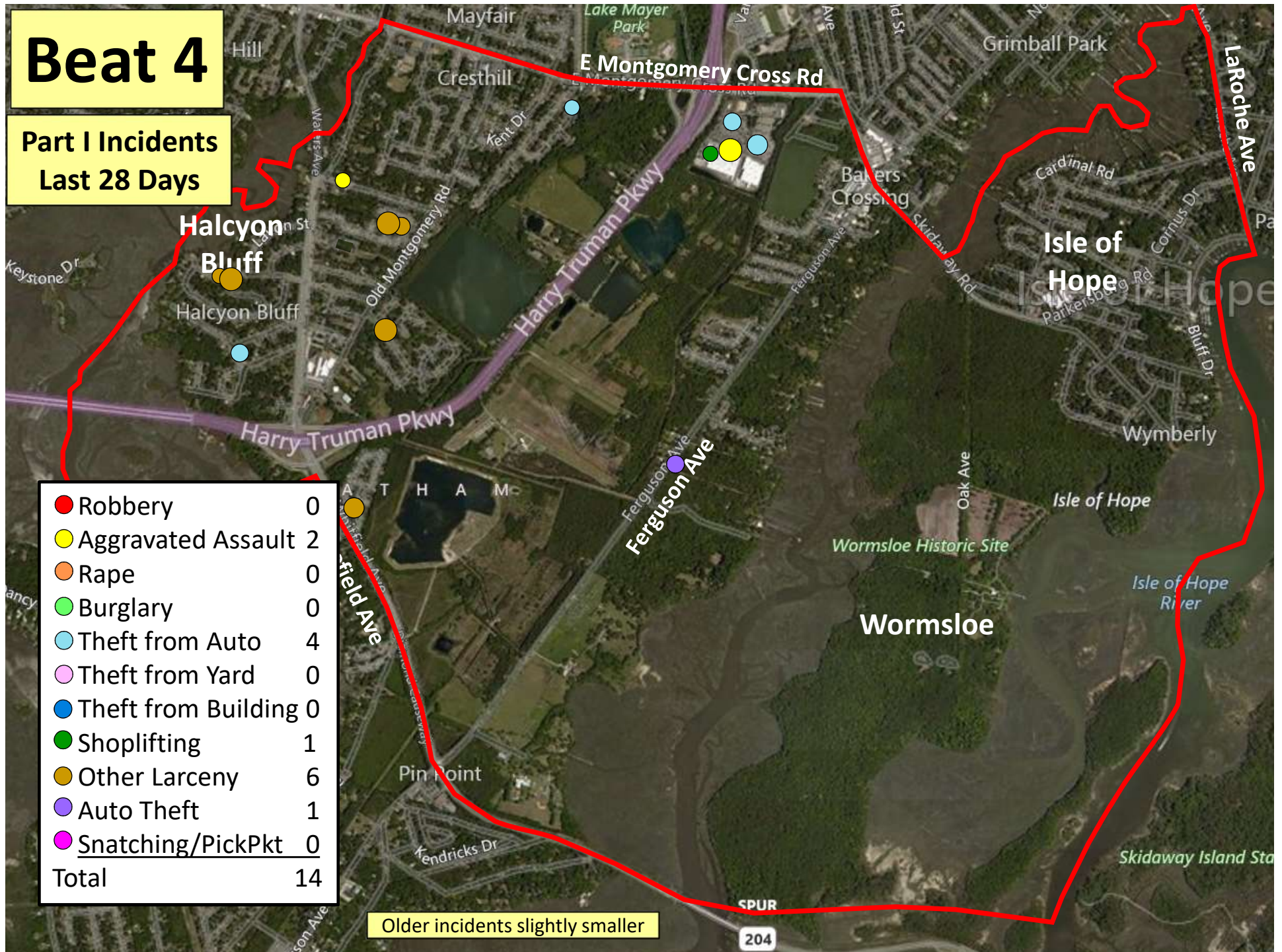


# Beat 4

## Part I Incidents Last 28 Days

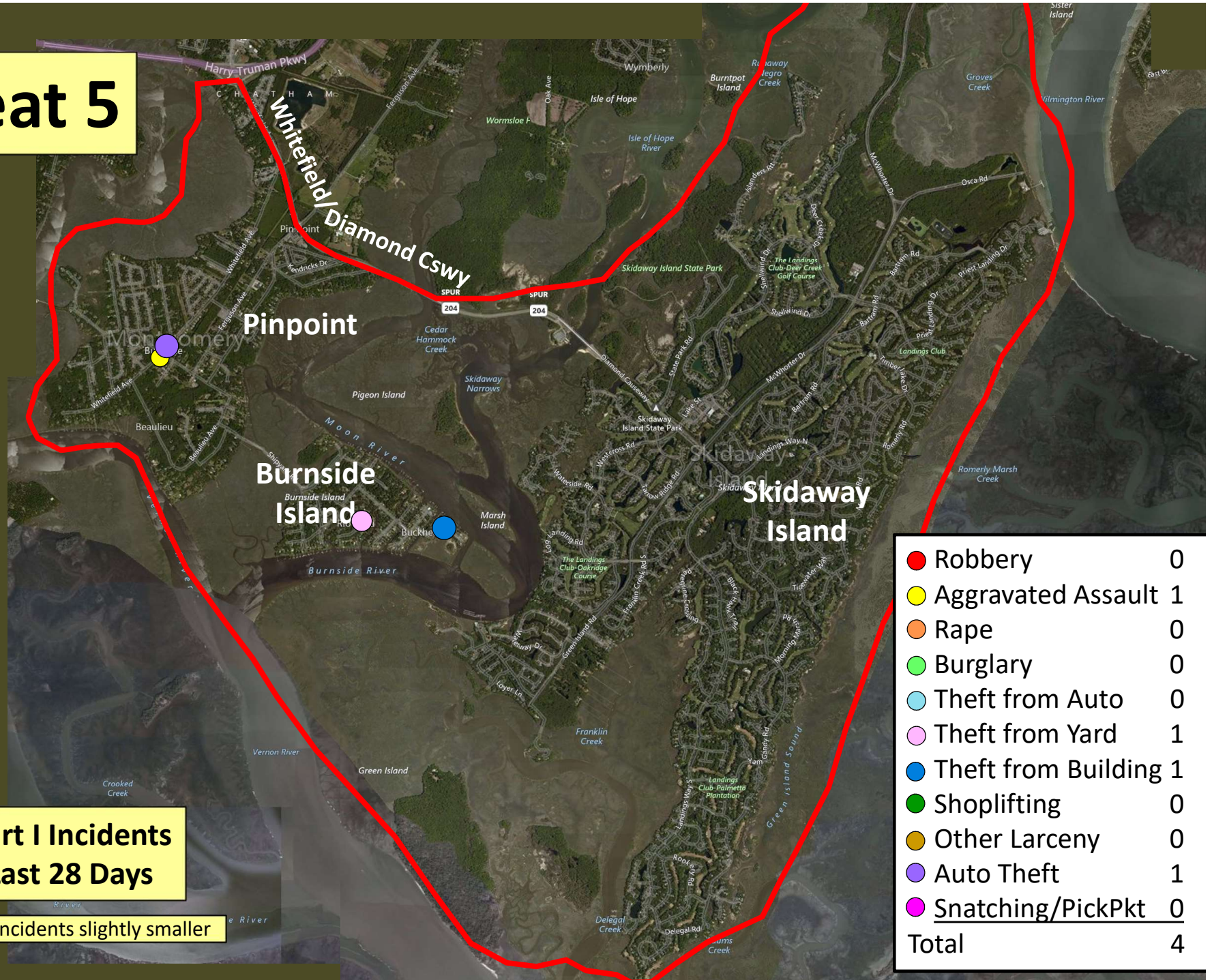
● Robbery	0
● Aggravated Assault	2
● Rape	0
● Burglary	0
● Theft from Auto	4
● Theft from Yard	0
● Theft from Building	0
● Shoplifting	1
● Other Larceny	6
● Auto Theft	1
● Snatching/PickPkt	0
Total	14

Older incidents slightly smaller





# Beat 5



**Part I Incidents  
Last 28 Days**

Older incidents slightly smaller

● Robbery	0
● Aggravated Assault	1
● Rape	0
● Burglary	0
● Theft from Auto	0
● Theft from Yard	1
● Theft from Building	1
● Shoplifting	0
● Other Larceny	0
● Auto Theft	1
● Snatching/PickPkt	0
<b>Total</b>	<b>4</b>



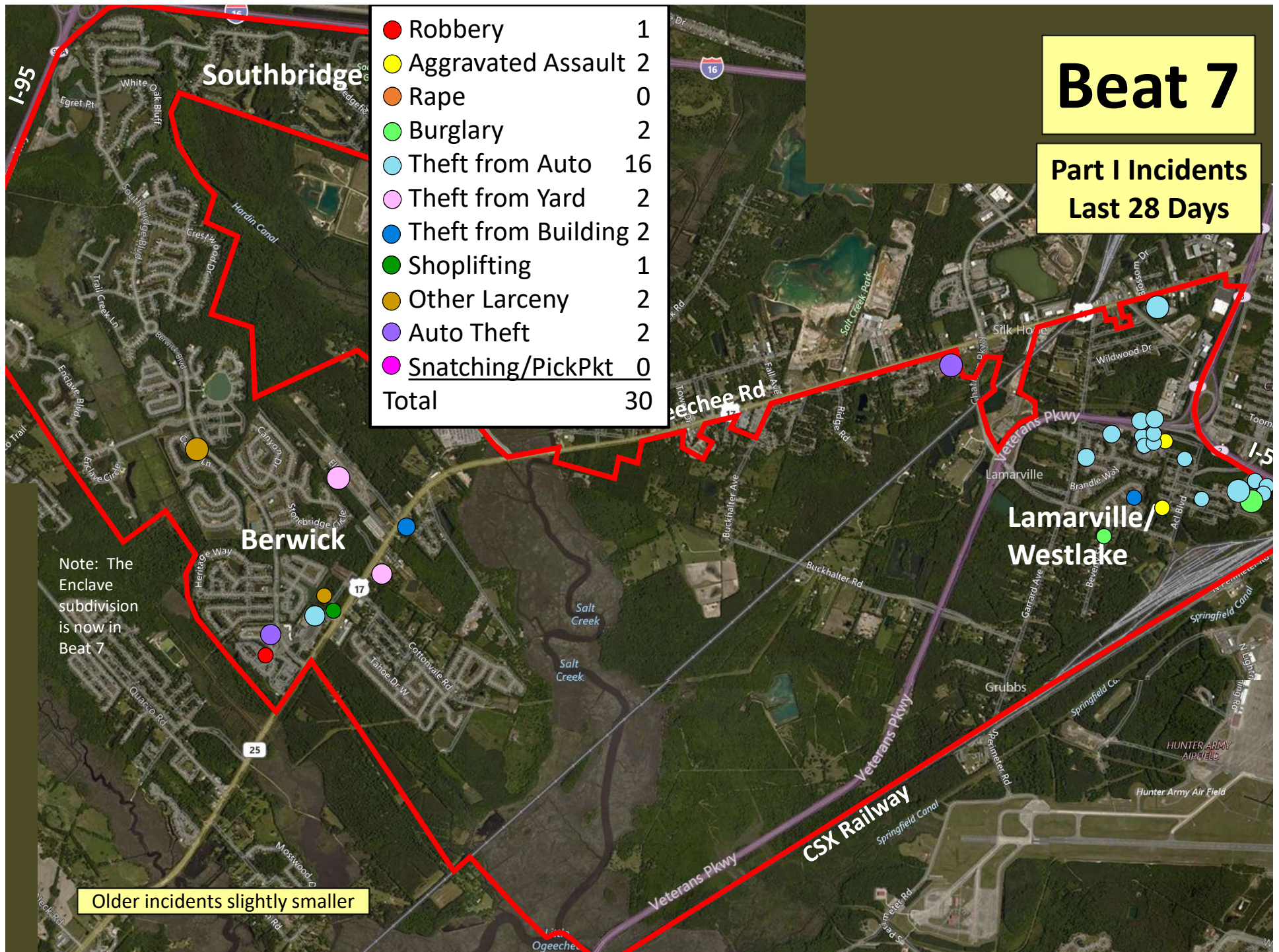
# Beat 6

Part I Incidents  
Last 28 Days

● Robbery	0
● Aggravated Assault	0
● Rape	0
● Burglary	0
● Theft from Auto	0
● Theft from Yard	1
● Theft from Building	0
● Shoplifting	0
● Other Larceny	1
● Auto Theft	0
● Snatching/PickPkt	0
Total	2

Older incidents slightly smaller



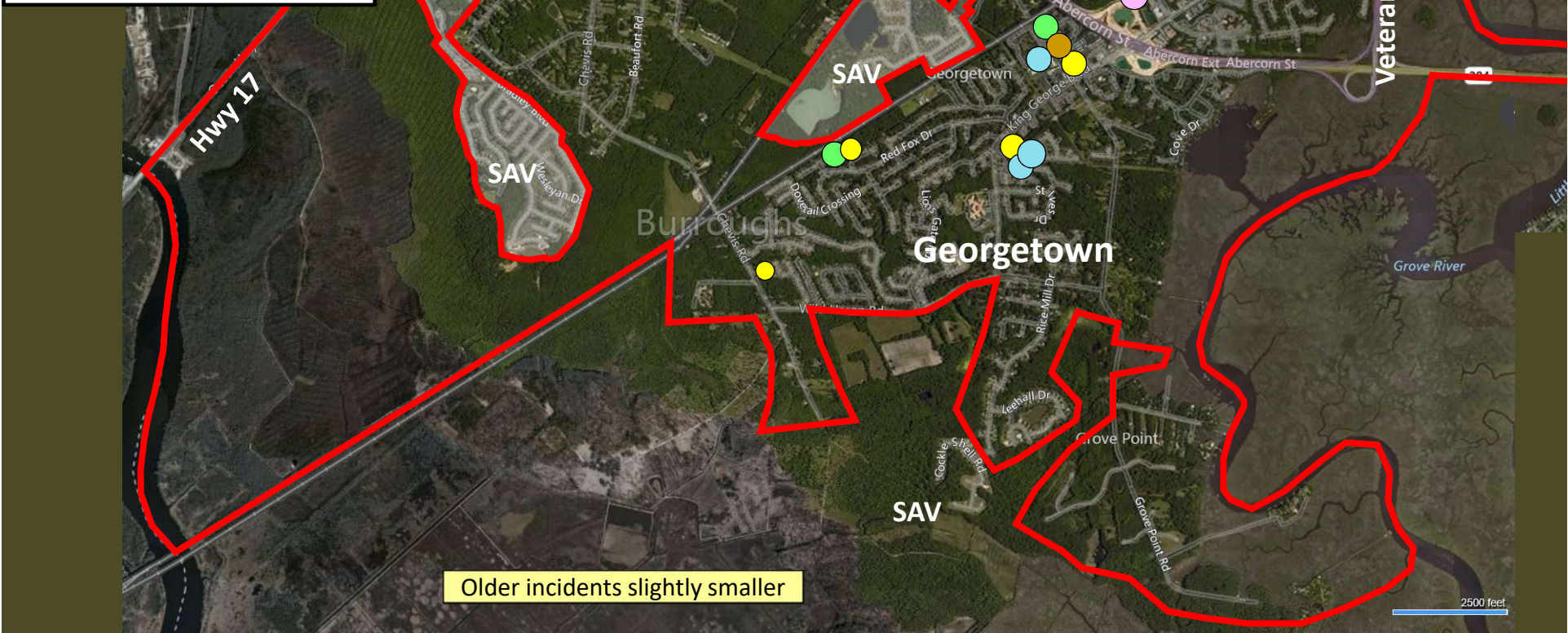




Part I Incidents  
Last 28 Days

Beat 8

● Robbery	1
● Aggravated Assault	4
● Rape	0
● Burglary	4
● Theft from Auto	7
● Theft from Yard	5
● Theft from Bldg	1
● Shoplifting	11
● Other Larceny	2
● Auto Theft	3
● Snatching/PickPkt	0
Total	38



Older incidents slightly smaller



# Beat 9

## Part I Incidents Last 28 Days

Note: The  
Enclave  
subdivision  
is now in  
Beat 7

● Robbery	4
● Aggravated Assault	4
● Rape	0
● Burglary	1
● Theft from Auto	5
● Theft from Yard	0
● Theft from Building	3
● Shoplifting	0
● Other Larceny	2
● Auto Theft	6
● Snatching/PickPkt	1
Total	26

