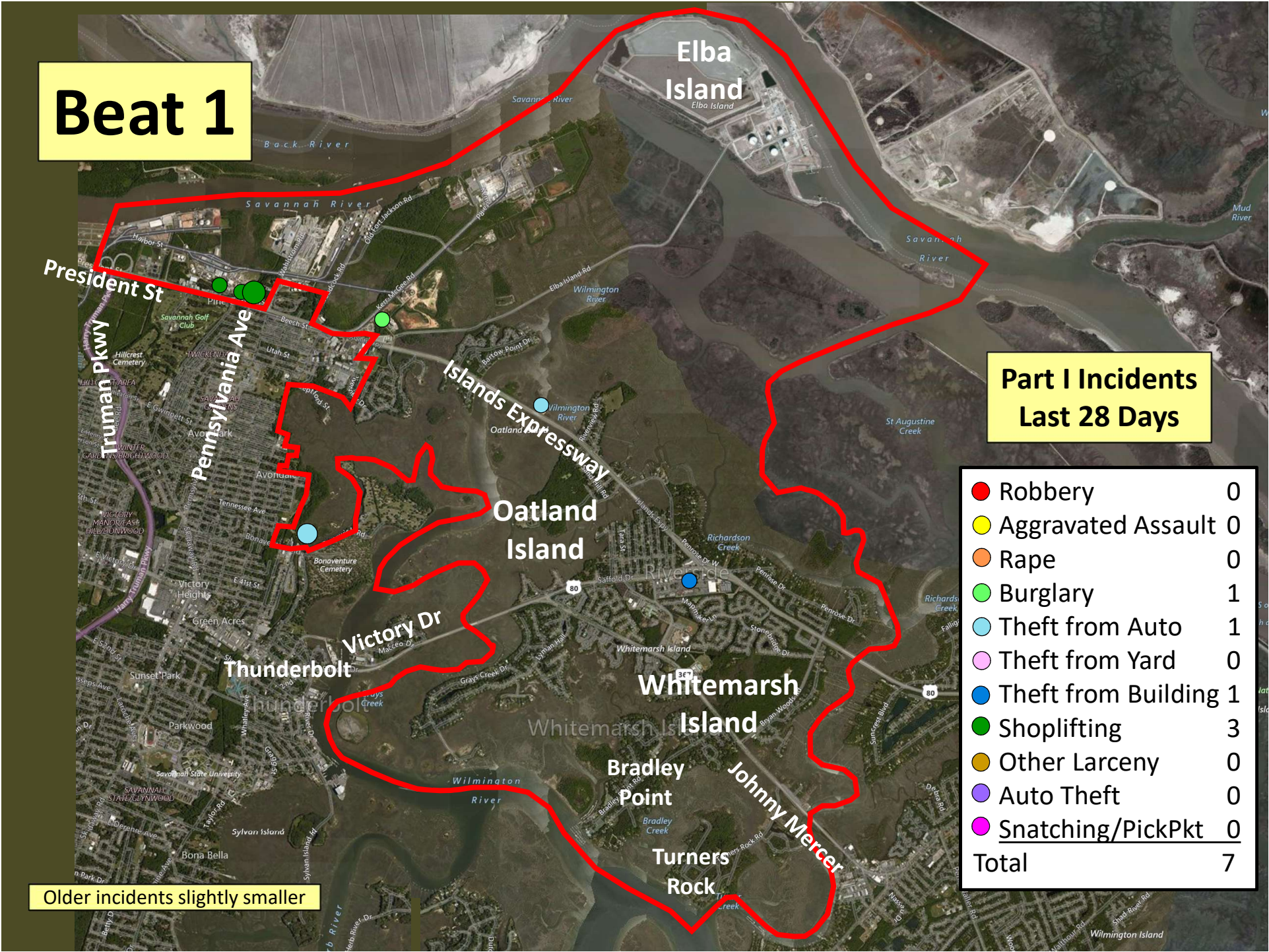


# Beat 1

## Part I Incidents Last 28 Days

● Robbery	0
● Aggravated Assault	0
● Rape	0
● Burglary	1
● Theft from Auto	1
● Theft from Yard	0
● Theft from Building	1
● Shoplifting	3
● Other Larceny	0
● Auto Theft	0
● Snatching/PickPkt	0
<b>Total</b>	<b>7</b>

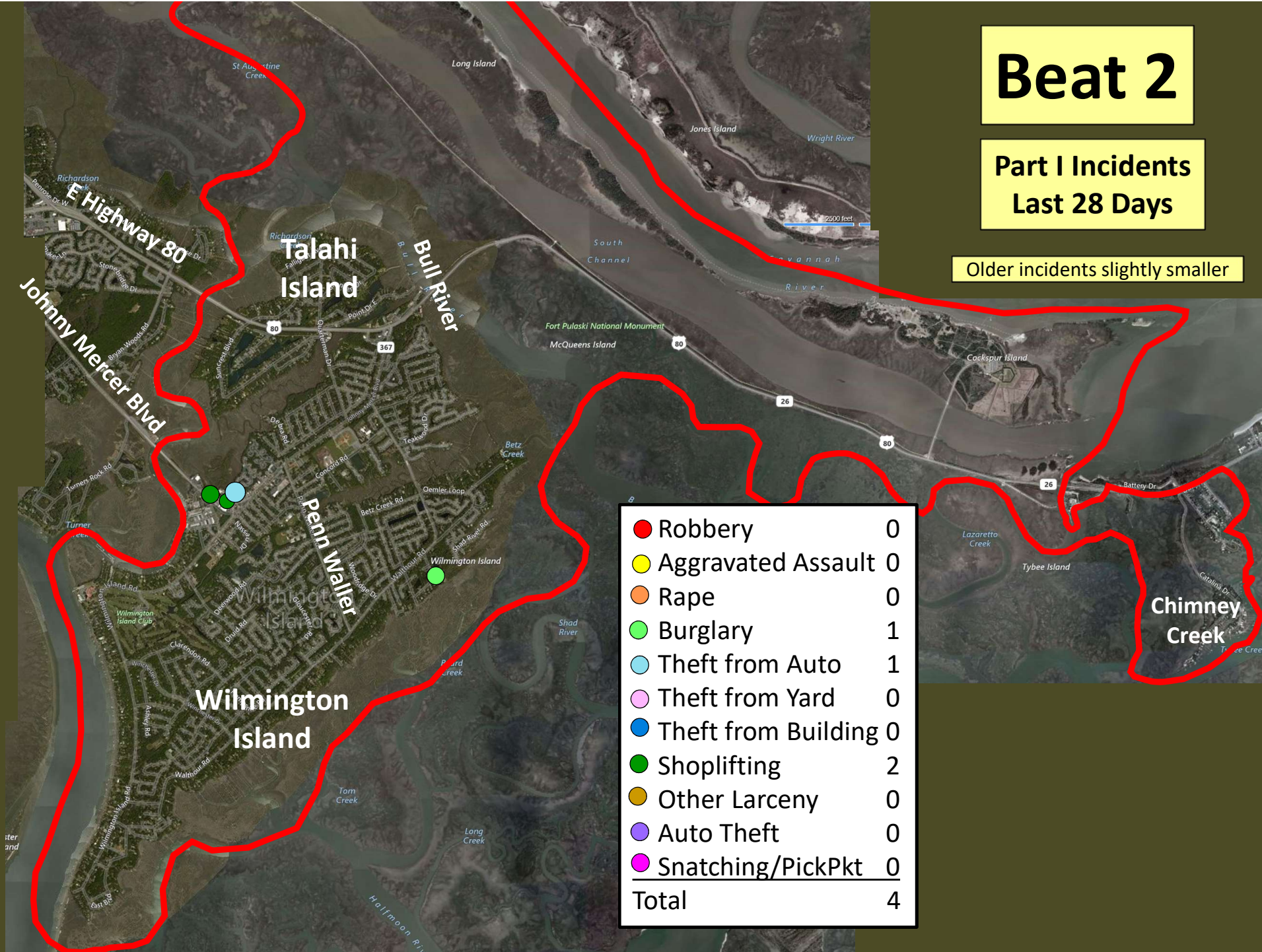
Older incidents slightly smaller



# Beat 2

Part I Incidents  
Last 28 Days

Older incidents slightly smaller



# Beat 3

● Robbery	0
● Aggravated Assault	0
● Rape	0
● Burglary	1
● Theft from Auto	2
● Theft from Yard	0
● Theft from Building	1
● Shoplifting	0
● Other Larceny	0
● Auto Theft	0
● Snatching/PickPkt	0
<b>Total</b>	<b>4</b>

**Part I Incidents  
Last 28 Days**

Older incidents slightly smaller



# Beat 4

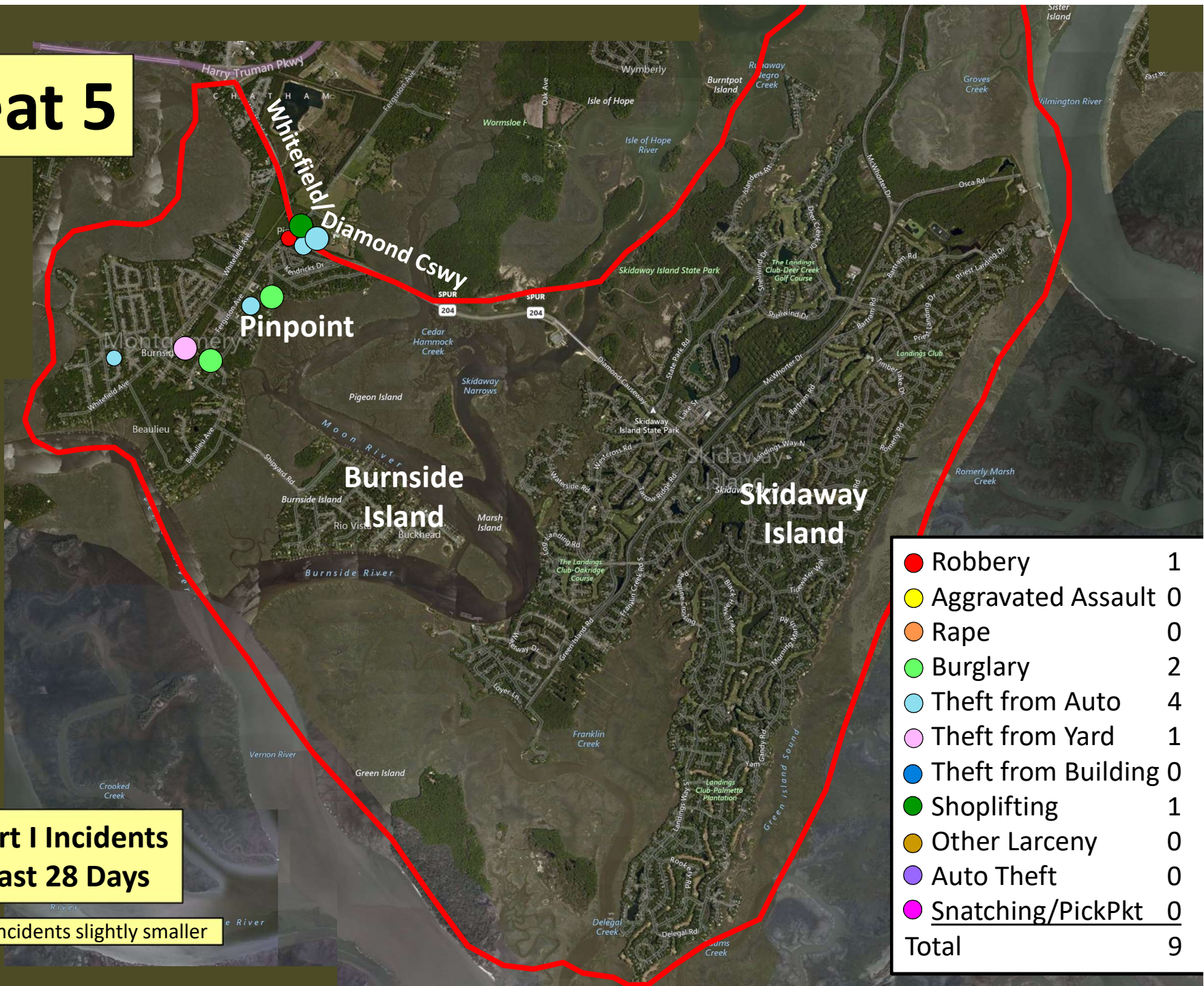
Part I Incidents  
Last 28 Days

● Aggravated Assault	0
● Rape	0
● Burglary	0
● Theft from Auto	0
● Theft from Yard	0
● Theft from Building	1
● Shoplifting	10
● Other Larceny	0
● Auto Theft	0
● Snatching/PickPkt	0
<b>Total</b>	<b>11</b>

Older incidents slightly smaller



# Beat 5



● Robbery	1
● Aggravated Assault	0
● Rape	0
● Burglary	2
● Theft from Auto	4
● Theft from Yard	1
● Theft from Building	0
● Shoplifting	1
● Other Larceny	0
● Auto Theft	0
● Snatching/PickPkt	0
<b>Total</b>	<b>9</b>

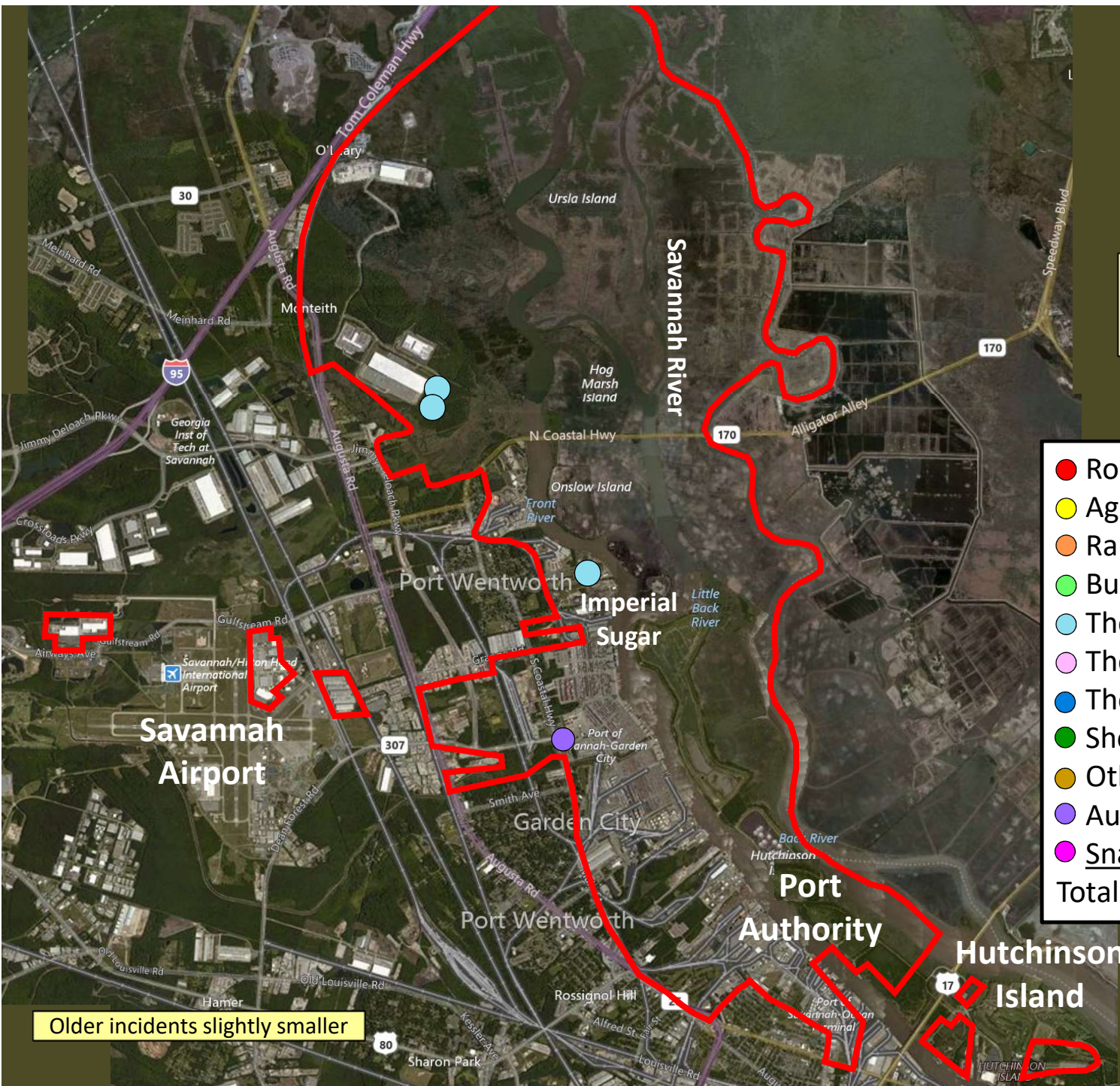
**Part I Incidents  
Last 28 Days**

Older incidents slightly smaller

# Beat 6

Part I Incidents  
Last 28 Days

● Robbery	0
● Aggravated Assault	0
● Rape	0
● Burglary	0
● Theft from Auto	3
● Theft from Yard	0
● Theft from Building	0
● Shoplifting	0
● Other Larceny	0
● Auto Theft	1
● Snatching/PickPkt	0
<b>Total</b>	<b>4</b>

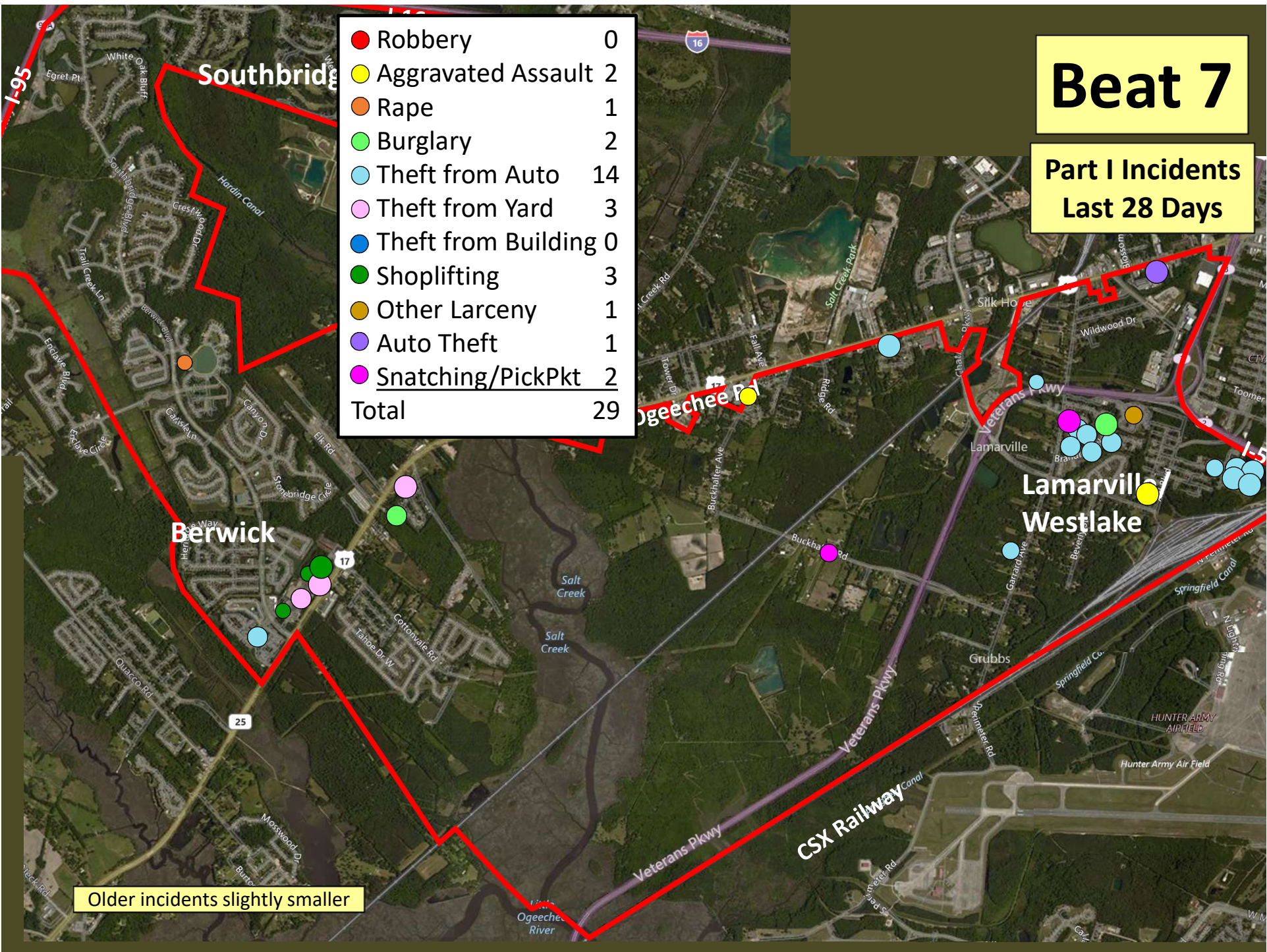


Older incidents slightly smaller

# Beat 7

Part I Incidents  
Last 28 Days

● Robbery	0
● Aggravated Assault	2
● Rape	1
● Burglary	2
● Theft from Auto	14
● Theft from Yard	3
● Theft from Building	0
● Shoplifting	3
● Other Larceny	1
● Auto Theft	1
● Snatching/PickPkt	2
<b>Total</b>	<b>29</b>

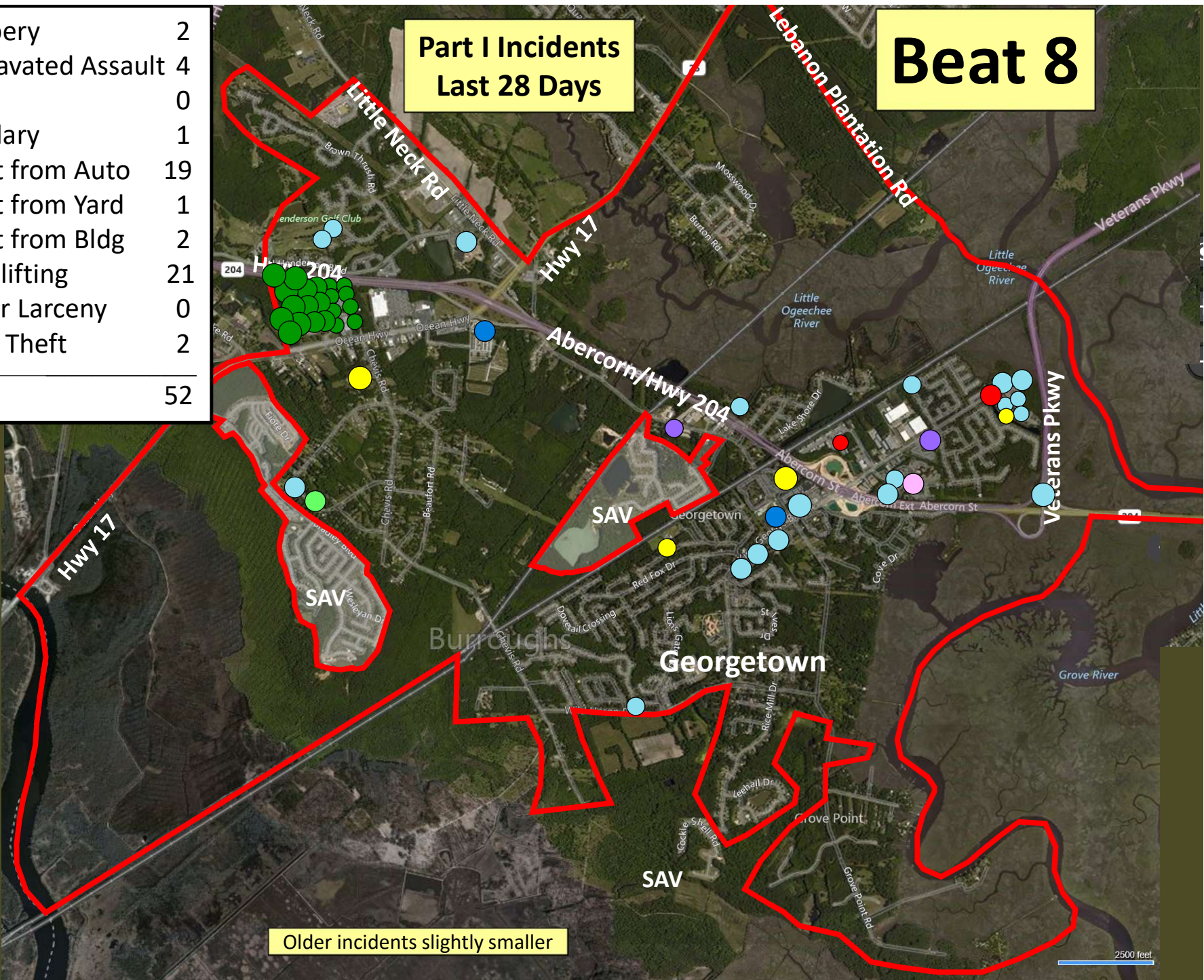


Older incidents slightly smaller

**Part I Incidents  
Last 28 Days**

**Beat 8**

● Robbery	2
● Aggravated Assault	4
● Rape	0
● Burglary	1
● Theft from Auto	19
● Theft from Yard	1
● Theft from Bldg	2
● Shoplifting	21
● Other Larceny	0
● Auto Theft	2
<b>Total</b>	<b>52</b>



Older incidents slightly smaller

2500 feet





# Beat 9

## Part I Incidents Last 28 Days

Note: The Enclave subdivision is now in Beat 7

● Robbery	0
● Aggravated Assault	6
● Rape	0
● Burglary	5
● Theft from Auto	12
● Theft from Yard	0
● Theft from Building	1
● Shoplifting	0
● Other Larceny	0
● Auto Theft	0
● Snatching/PickPkt	2
<b>Total</b>	<b>28</b>

Older incidents slightly smaller