

Beat 1

Part I Incidents Last 28 Days

| | |
|-----------------------|---|
| ● Robbery | 0 |
| ● Aggravated Assault | 0 |
| ● Rape | 0 |
| ● Burglary | 0 |
| ● Theft from Auto | 1 |
| ● Theft from Yard | 0 |
| ● Theft from Building | 2 |
| ● Shoplifting | 4 |
| ● Other Larceny | 0 |
| ● Auto Theft | 0 |
| ● Snatching/PickPkt | 0 |
| Total | 7 |

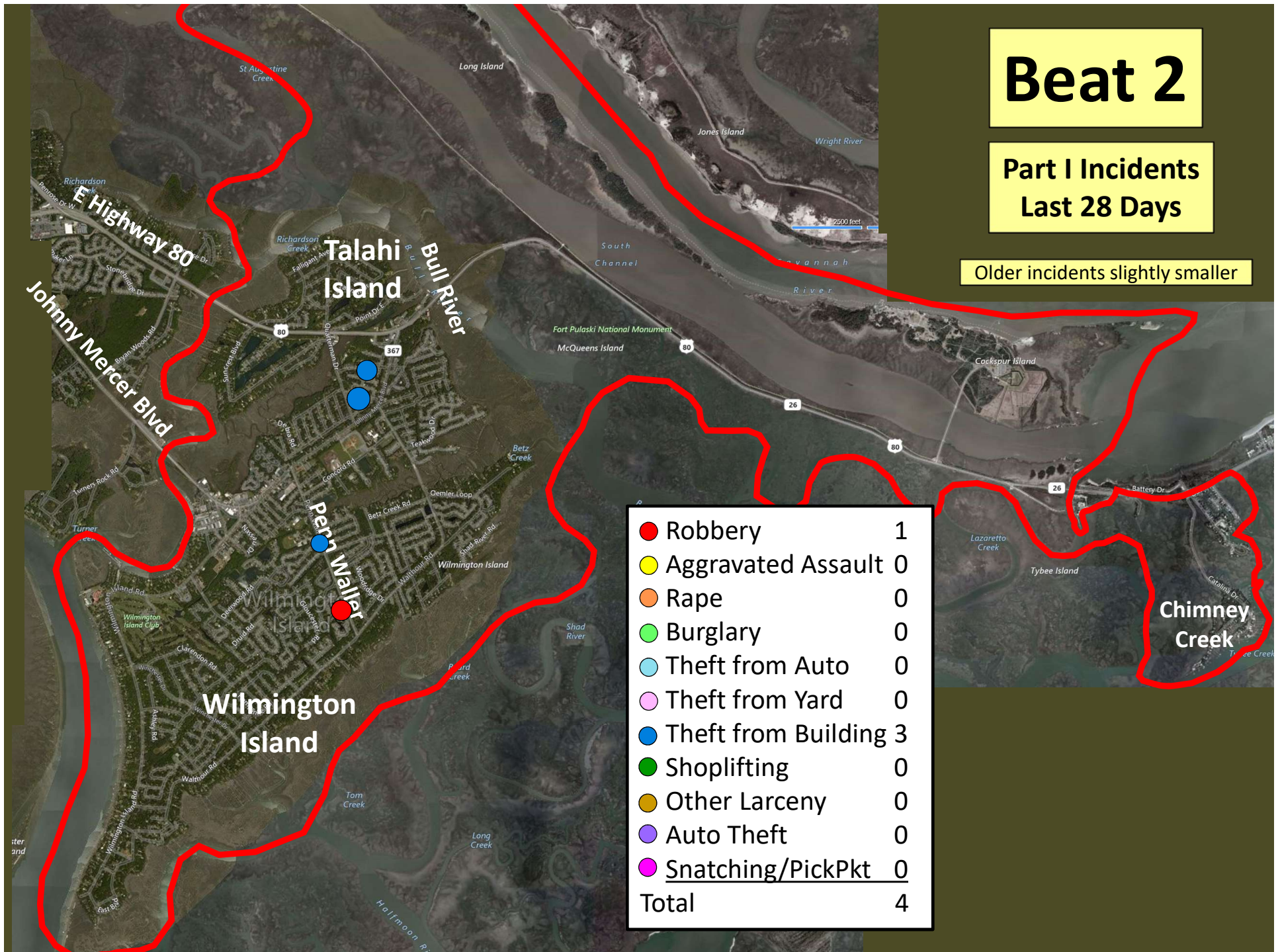
Older incidents slightly smaller

Beat 2

Part I Incidents Last 28 Days

Older incidents slightly smaller

| | |
|-----------------------|---|
| ● Robbery | 1 |
| ● Aggravated Assault | 0 |
| ● Rape | 0 |
| ● Burglary | 0 |
| ● Theft from Auto | 0 |
| ● Theft from Yard | 0 |
| ● Theft from Building | 3 |
| ● Shoplifting | 0 |
| ● Other Larceny | 0 |
| ● Auto Theft | 0 |
| ● Snatching/PickPkt | 0 |
| Total | 4 |



Beat 3

| | |
|-----------------------|----|
| ● Robbery | 0 |
| ● Aggravated Assault | 2 |
| ● Rape | 0 |
| ● Burglary | 2 |
| ● Theft from Auto | 3 |
| ● Theft from Yard | 0 |
| ● Theft from Building | 2 |
| ● Shoplifting | 0 |
| ● Other Larceny | 0 |
| ● Auto Theft | 2 |
| ● Snatching/PickPkt | 0 |
| Total | 11 |

Part I Incidents Last 28 Days

Older incidents slightly smaller



Beat 4

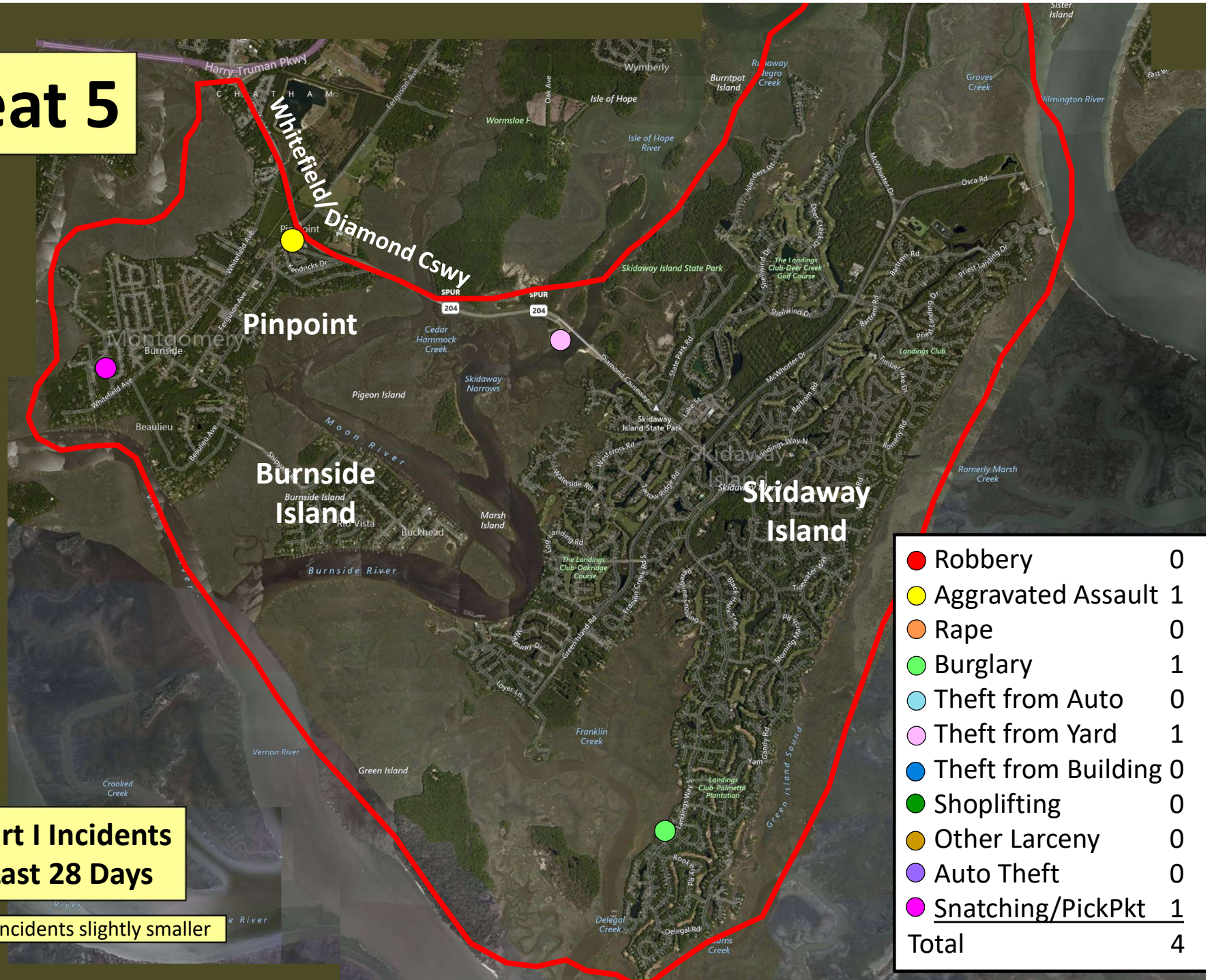
Part I Incidents Last 28 Days

| | |
|-----------------------|---|
| ● Robbery | 0 |
| ● Aggravated Assault | 0 |
| ● Rape | 0 |
| ● Burglary | 1 |
| ● Theft from Auto | 0 |
| ● Theft from Yard | 0 |
| ● Theft from Building | 0 |
| ● Shoplifting | 1 |
| ● Other Larceny | 0 |
| ● Auto Theft | 0 |
| ● Snatching/PickPkt | 0 |
| Total | 2 |

Older incidents slightly smaller



Beat 5



**Part I Incidents
Last 28 Days**

Older incidents slightly smaller

| | |
|-----------------------|----------|
| ● Robbery | 0 |
| ● Aggravated Assault | 1 |
| ● Rape | 0 |
| ● Burglary | 1 |
| ● Theft from Auto | 0 |
| ● Theft from Yard | 1 |
| ● Theft from Building | 0 |
| ● Shoplifting | 0 |
| ● Other Larceny | 0 |
| ● Auto Theft | 0 |
| ● Snatching/PickPkt | 1 |
| Total | 4 |

Beat 6

Part I Incidents
Last 28 Days

| | |
|-----------------------|---|
| ● Robbery | 0 |
| ● Aggravated Assault | 0 |
| ● Rape | 0 |
| ● Burglary | 0 |
| ● Theft from Auto | 0 |
| ● Theft from Yard | 0 |
| ● Theft from Building | 0 |
| ● Shoplifting | 0 |
| ● Other Larceny | 0 |
| ● Auto Theft | 0 |
| ● Snatching/PickPkt | 0 |
| Total | 0 |

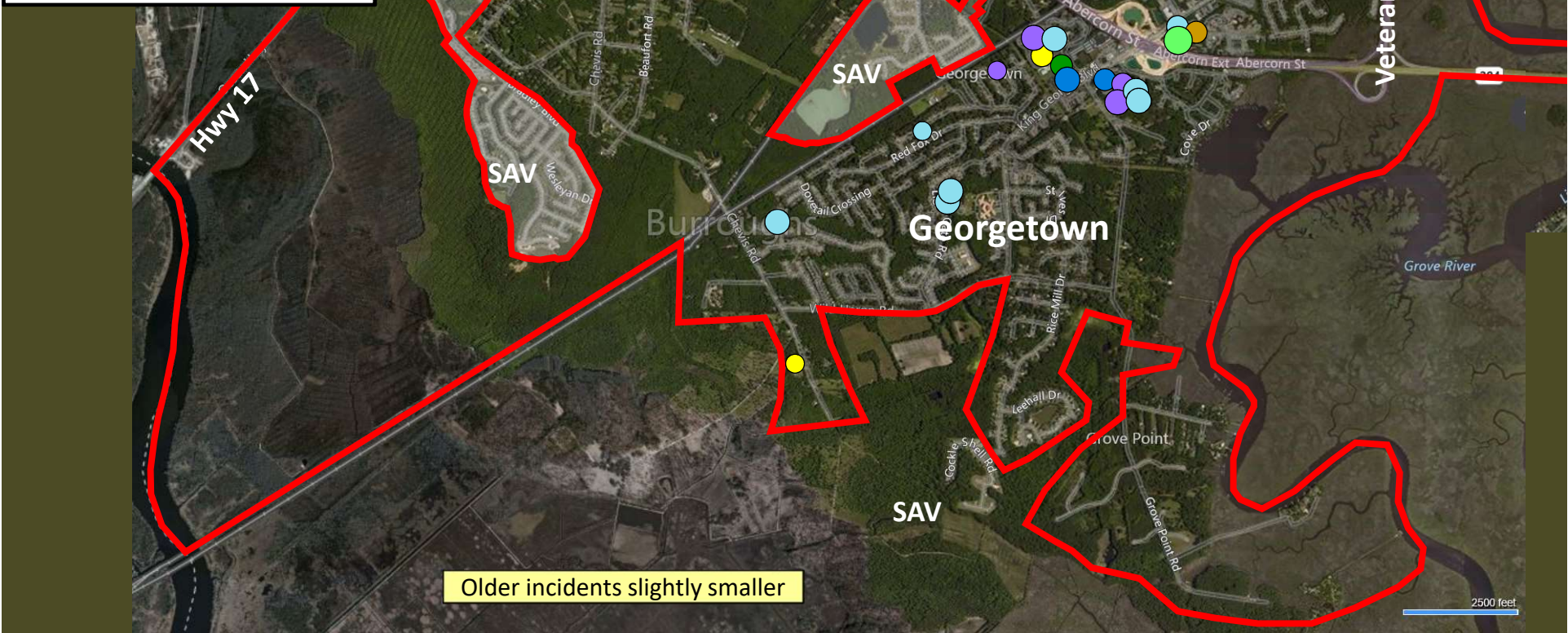
Older incidents slightly smaller



Part I Incidents
Last 28 Days

Beat 8

| | |
|----------------------|----|
| ● Robbery | 0 |
| ● Aggravated Assault | 2 |
| ● Rape | 0 |
| ● Burglary | 3 |
| ● Theft from Auto | 9 |
| ● Theft from Yard | 0 |
| ● Theft from Bldg | 2 |
| ● Shoplifting | 6 |
| ● Other Larceny | 1 |
| ● Auto Theft | 5 |
| ● Snatching/PickPkt | 0 |
| Total | 28 |



Older incidents slightly smaller

Beat 9

Part I Incidents Last 28 Days

Note: The
Enclave
subdivision
is now in
Beat 7

| | |
|-----------------------|----|
| ● Homicide | 1 |
| ● Robbery | 0 |
| ● Aggravated Assault | 2 |
| ● Rape | 0 |
| ● Burglary | 9 |
| ● Theft from Auto | 4 |
| ● Theft from Yard | 2 |
| ● Theft from Building | 1 |
| ● Shoplifting | 6 |
| ● Other Larceny | 0 |
| ● Auto Theft | 1 |
| ● Snatching/PickPkt | 0 |
| Total | 27 |

