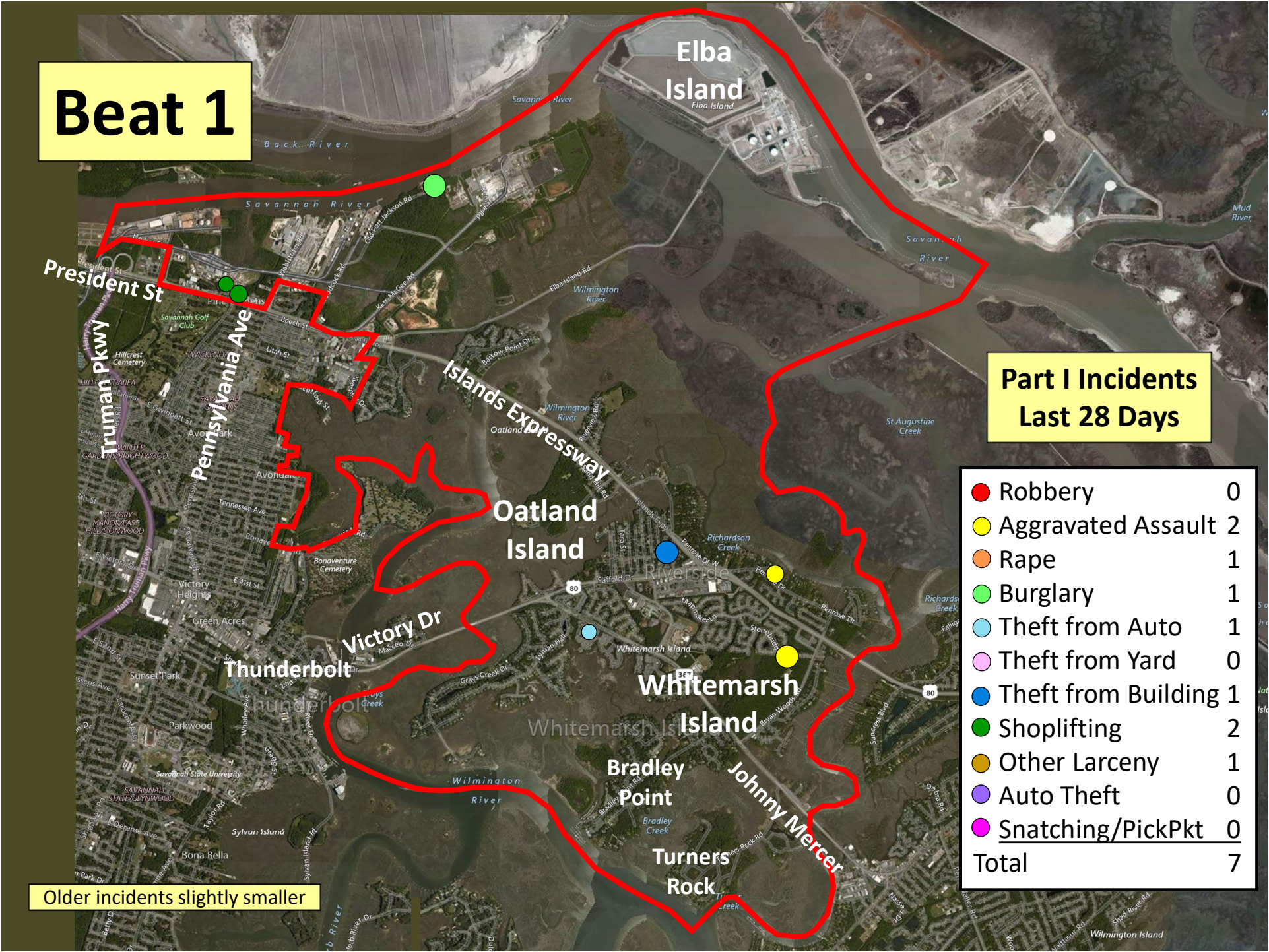


Beat 1

Part I Incidents Last 28 Days

| | |
|-----------------------|----------|
| ● Robbery | 0 |
| ● Aggravated Assault | 2 |
| ● Rape | 1 |
| ● Burglary | 1 |
| ● Theft from Auto | 1 |
| ● Theft from Yard | 0 |
| ● Theft from Building | 1 |
| ● Shoplifting | 2 |
| ● Other Larceny | 1 |
| ● Auto Theft | 0 |
| ● Snatching/PickPkt | 0 |
| Total | 7 |

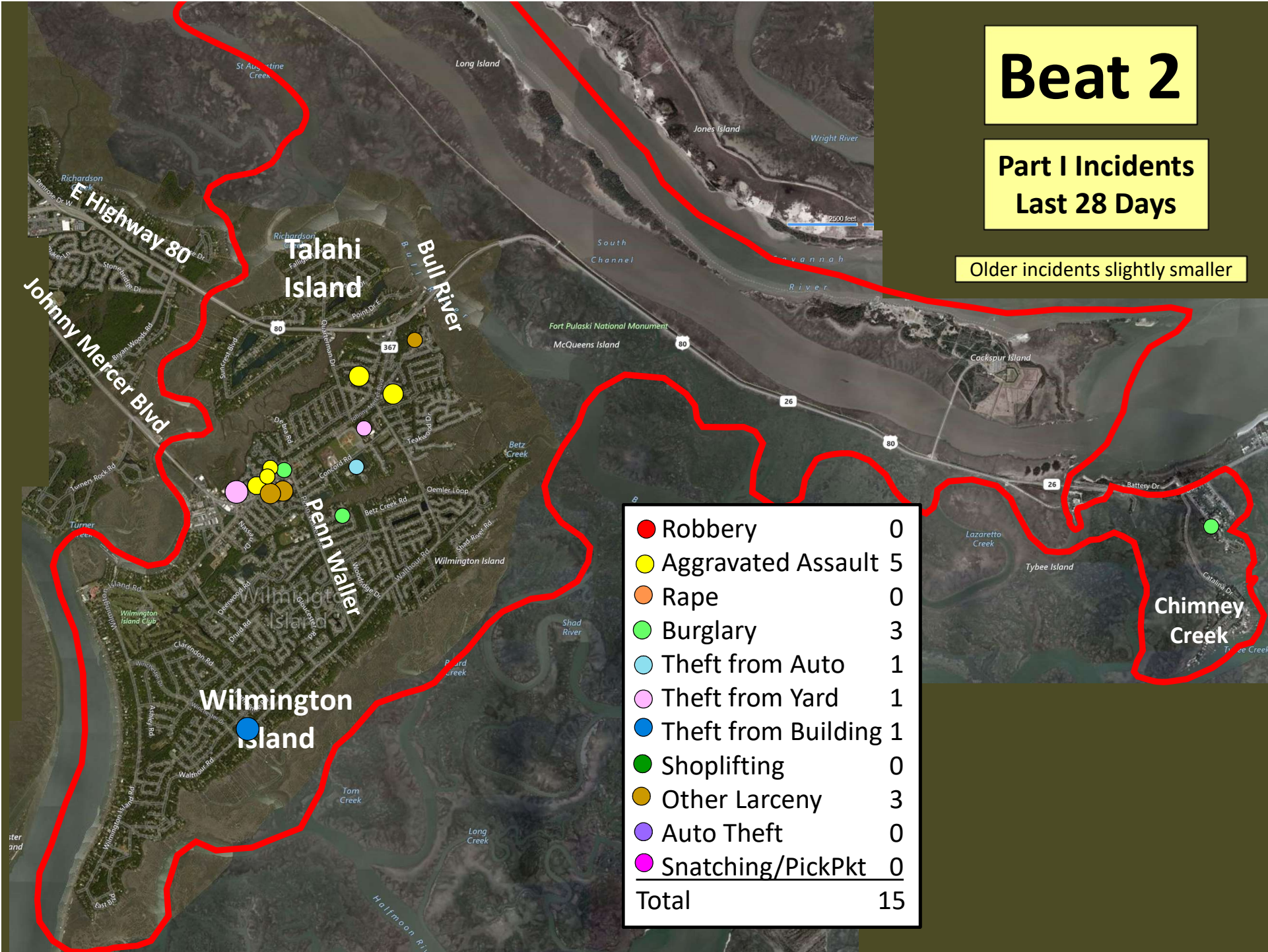
Older incidents slightly smaller



Beat 2

Part I Incidents
Last 28 Days

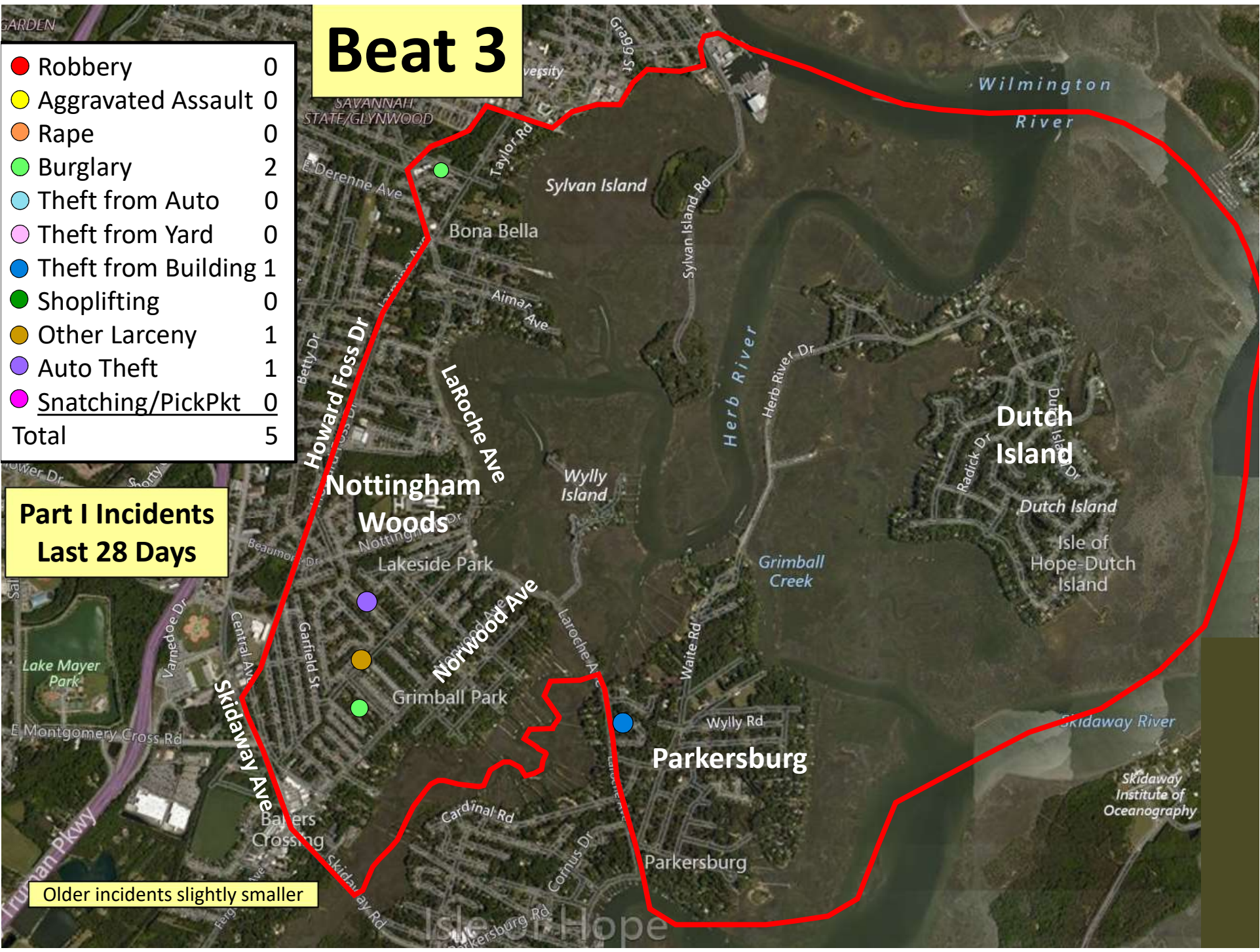
Older incidents slightly smaller



Beat 3

| | |
|-----------------------|----------|
| ● Robbery | 0 |
| ● Aggravated Assault | 0 |
| ● Rape | 0 |
| ● Burglary | 2 |
| ● Theft from Auto | 0 |
| ● Theft from Yard | 0 |
| ● Theft from Building | 1 |
| ● Shoplifting | 0 |
| ● Other Larceny | 1 |
| ● Auto Theft | 1 |
| ● Snatching/PickPkt | 0 |
| Total | 5 |

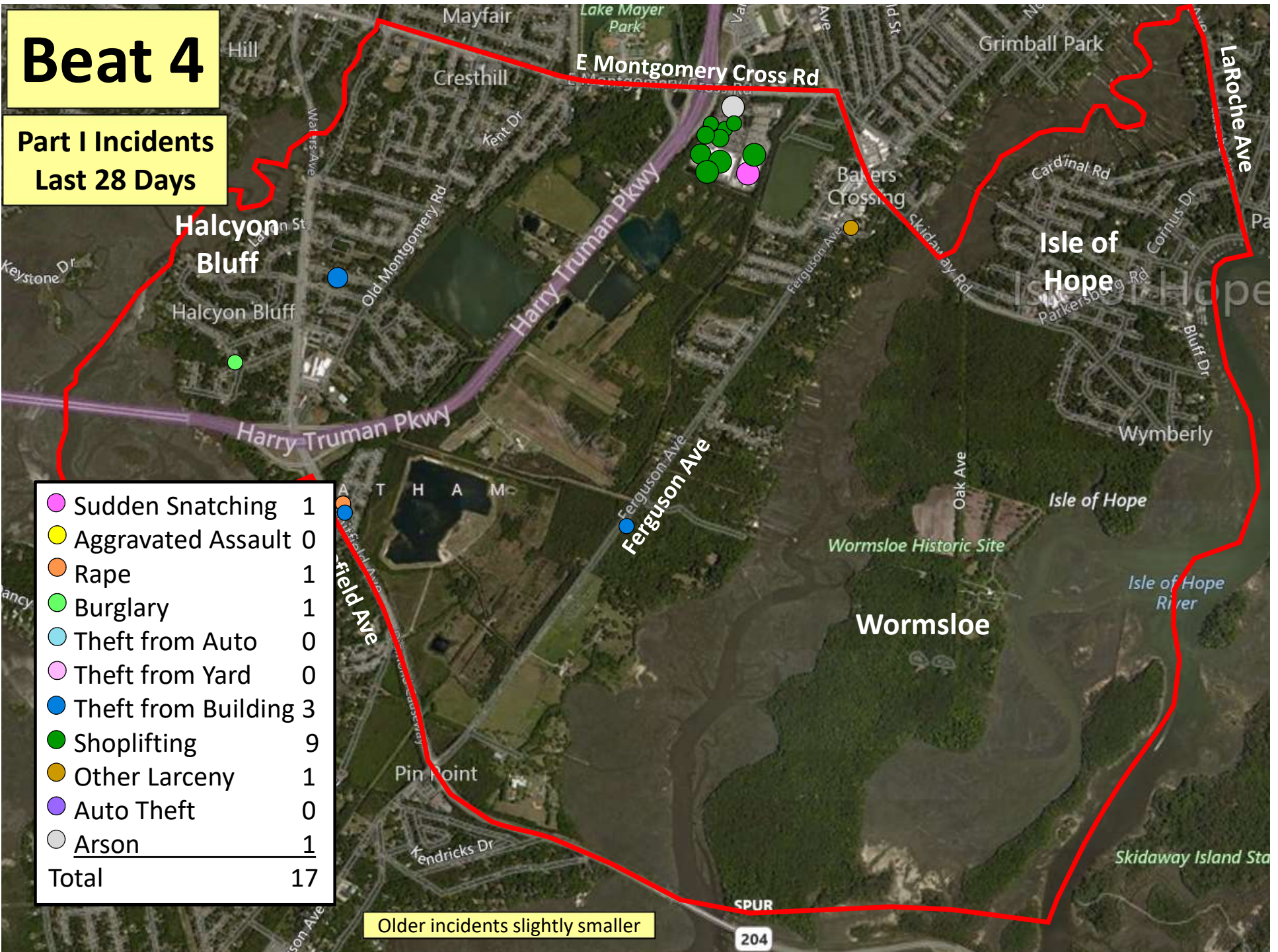
Part I Incidents Last 28 Days



Older incidents slightly smaller

Beat 4

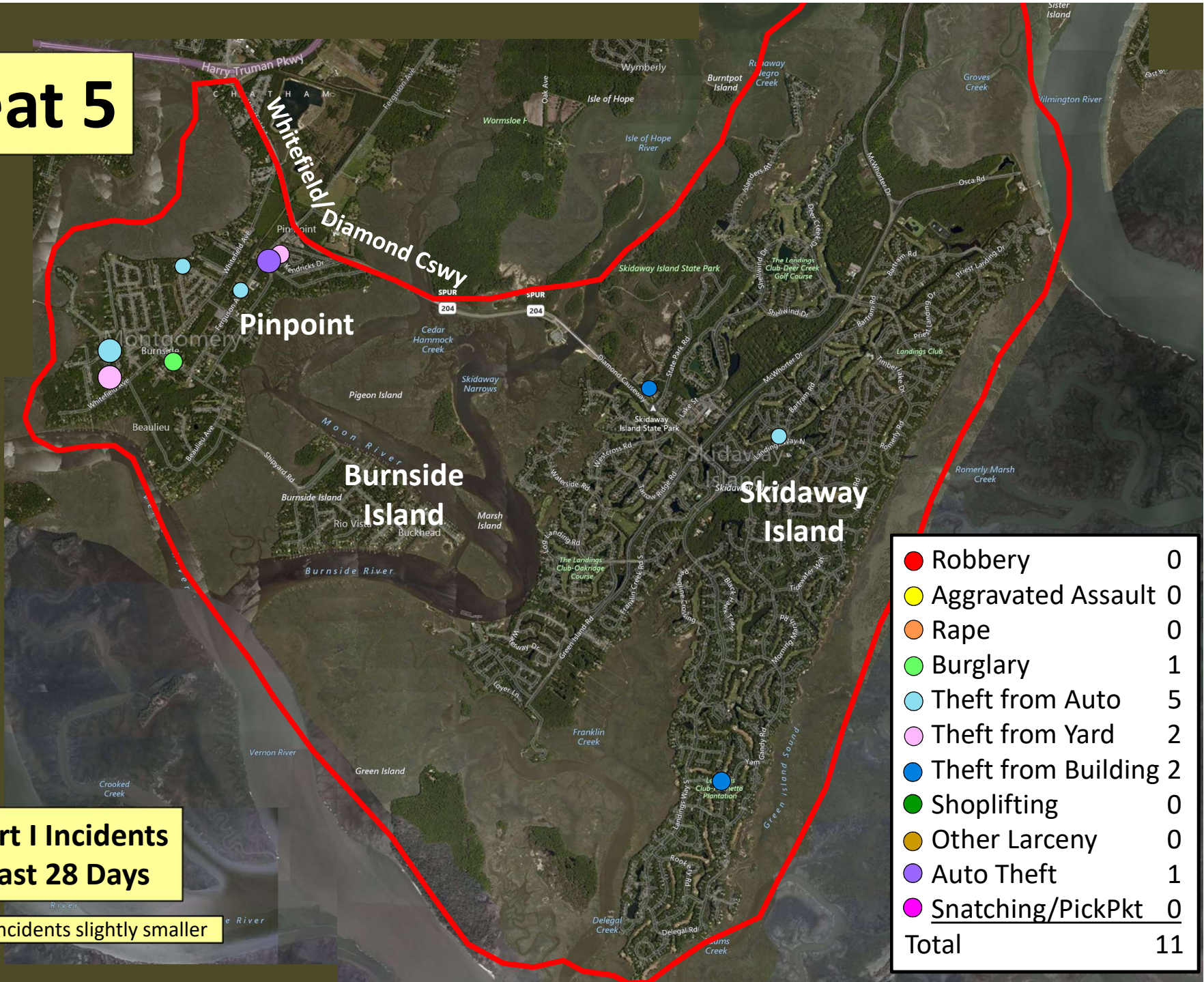
Part I Incidents
Last 28 Days



| | |
|-----------------------|-----------|
| ● Sudden Snatching | 1 |
| ● Aggravated Assault | 0 |
| ● Rape | 1 |
| ● Burglary | 1 |
| ● Theft from Auto | 0 |
| ● Theft from Yard | 0 |
| ● Theft from Building | 3 |
| ● Shoplifting | 9 |
| ● Other Larceny | 1 |
| ● Auto Theft | 0 |
| ● Arson | 1 |
| Total | 17 |

Older incidents slightly smaller

Beat 5



**Part I Incidents
Last 28 Days**

Older incidents slightly smaller

Beat 6

Part I Incidents
Last 28 Days

| | |
|-----------------------|---|
| ● Robbery | 0 |
| ● Aggravated Assault | 0 |
| ● Rape | 0 |
| ● Burglary | 1 |
| ● Theft from Auto | 0 |
| ● Theft from Yard | 0 |
| ● Theft from Building | 0 |
| ● Shoplifting | 0 |
| ● Other Larceny | 0 |
| ● Auto Theft | 0 |
| ● Snatching/PickPkt | 0 |
| Total | 1 |

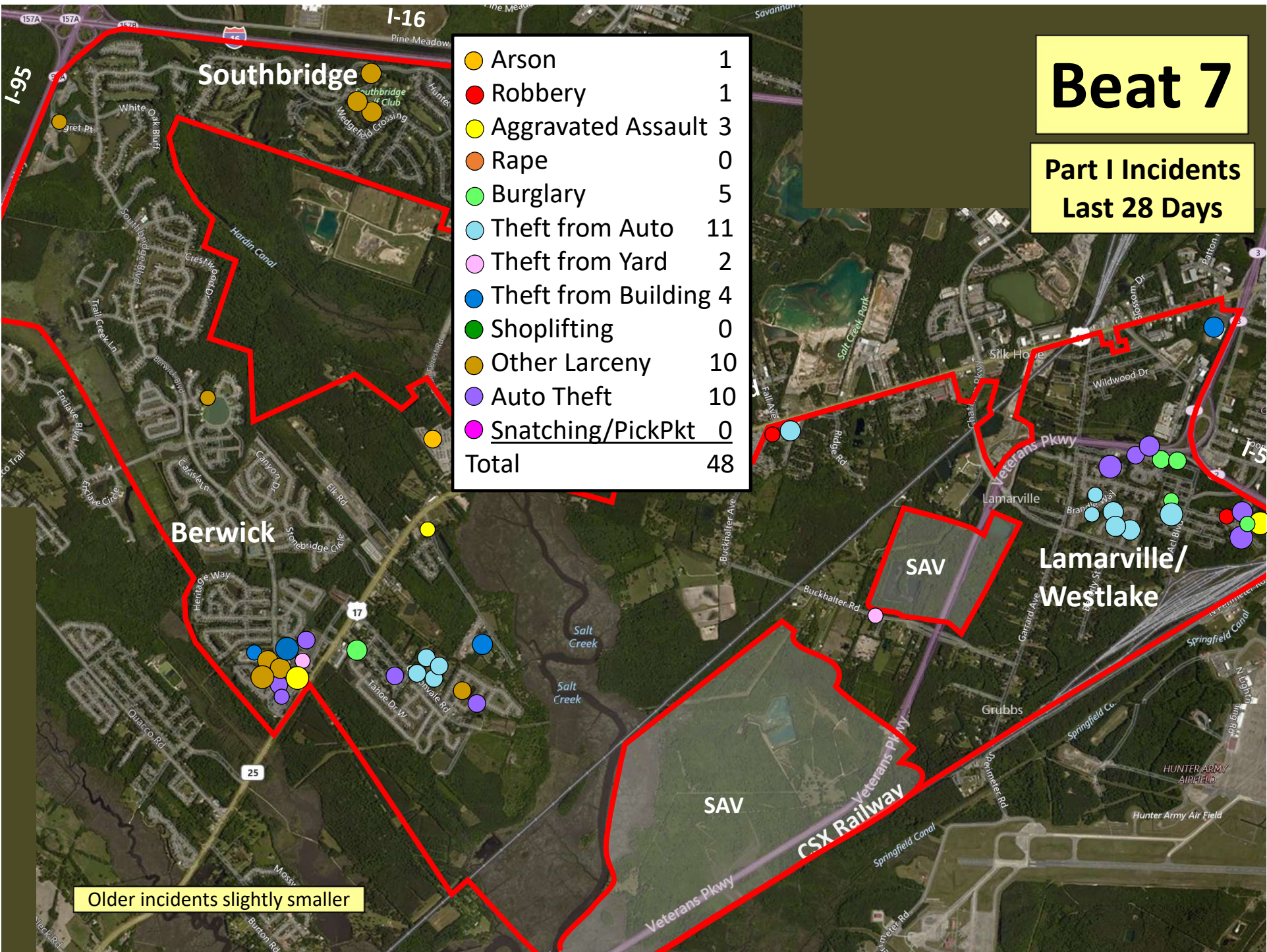


Older incidents slightly smaller

Beat 7

Part I Incidents
Last 28 Days

| | |
|-----------------------|-----------|
| ● Arson | 1 |
| ● Robbery | 1 |
| ● Aggravated Assault | 3 |
| ● Rape | 0 |
| ● Burglary | 5 |
| ● Theft from Auto | 11 |
| ● Theft from Yard | 2 |
| ● Theft from Building | 4 |
| ● Shoplifting | 0 |
| ● Other Larceny | 10 |
| ● Auto Theft | 10 |
| ● Snatching/PickPkt | 0 |
| Total | 48 |

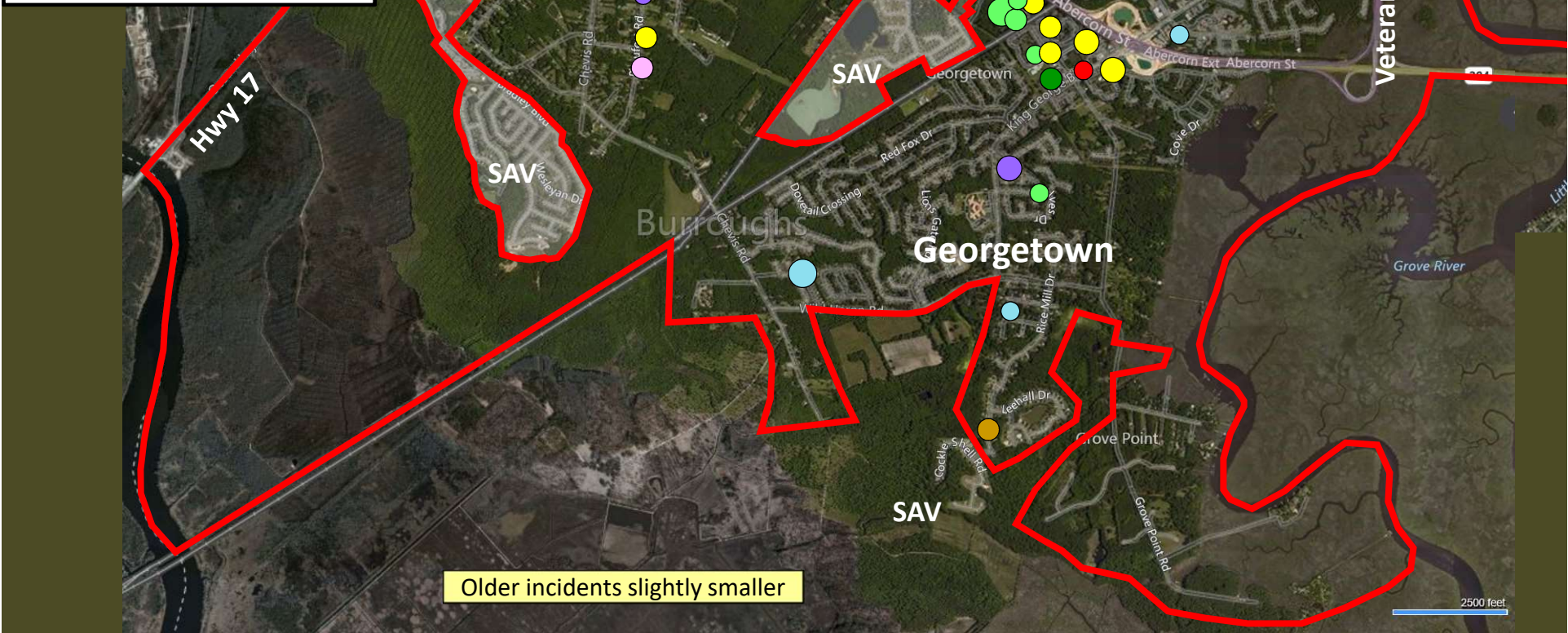


Older incidents slightly smaller

**Part I Incidents
Last 28 Days**

Beat 8

| | |
|----------------------|-----------|
| ● Robbery | 1 |
| ● Aggravated Assault | 6 |
| ● Rape | 0 |
| ● Burglary | 8 |
| ● Theft from Auto | 6 |
| ● Theft from Yard | 1 |
| ● Theft from Bldg | 0 |
| ● Shoplifting | 11 |
| ● Other Larceny | 1 |
| ● Auto Theft | 2 |
| ● Sudden Snatching | 0 |
| Total | 36 |



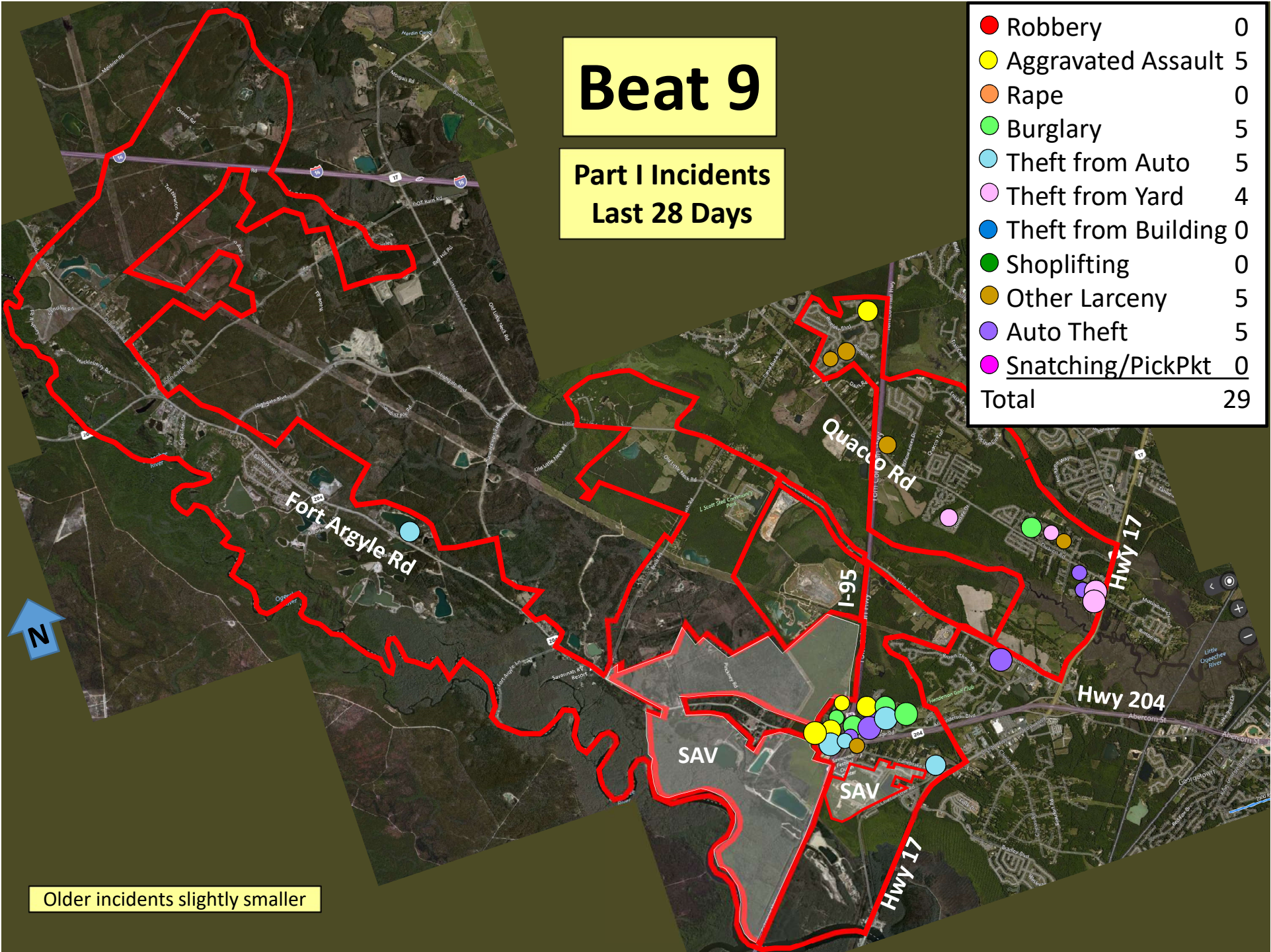
Older incidents slightly smaller

2500 feet

Beat 9

Part I Incidents
Last 28 Days

| | |
|-----------------------|-----------|
| ● Robbery | 0 |
| ● Aggravated Assault | 5 |
| ● Rape | 0 |
| ● Burglary | 5 |
| ● Theft from Auto | 5 |
| ● Theft from Yard | 4 |
| ● Theft from Building | 0 |
| ● Shoplifting | 0 |
| ● Other Larceny | 5 |
| ● Auto Theft | 5 |
| ● Snatching/PickPkt | 0 |
| Total | 29 |



Older incidents slightly smaller