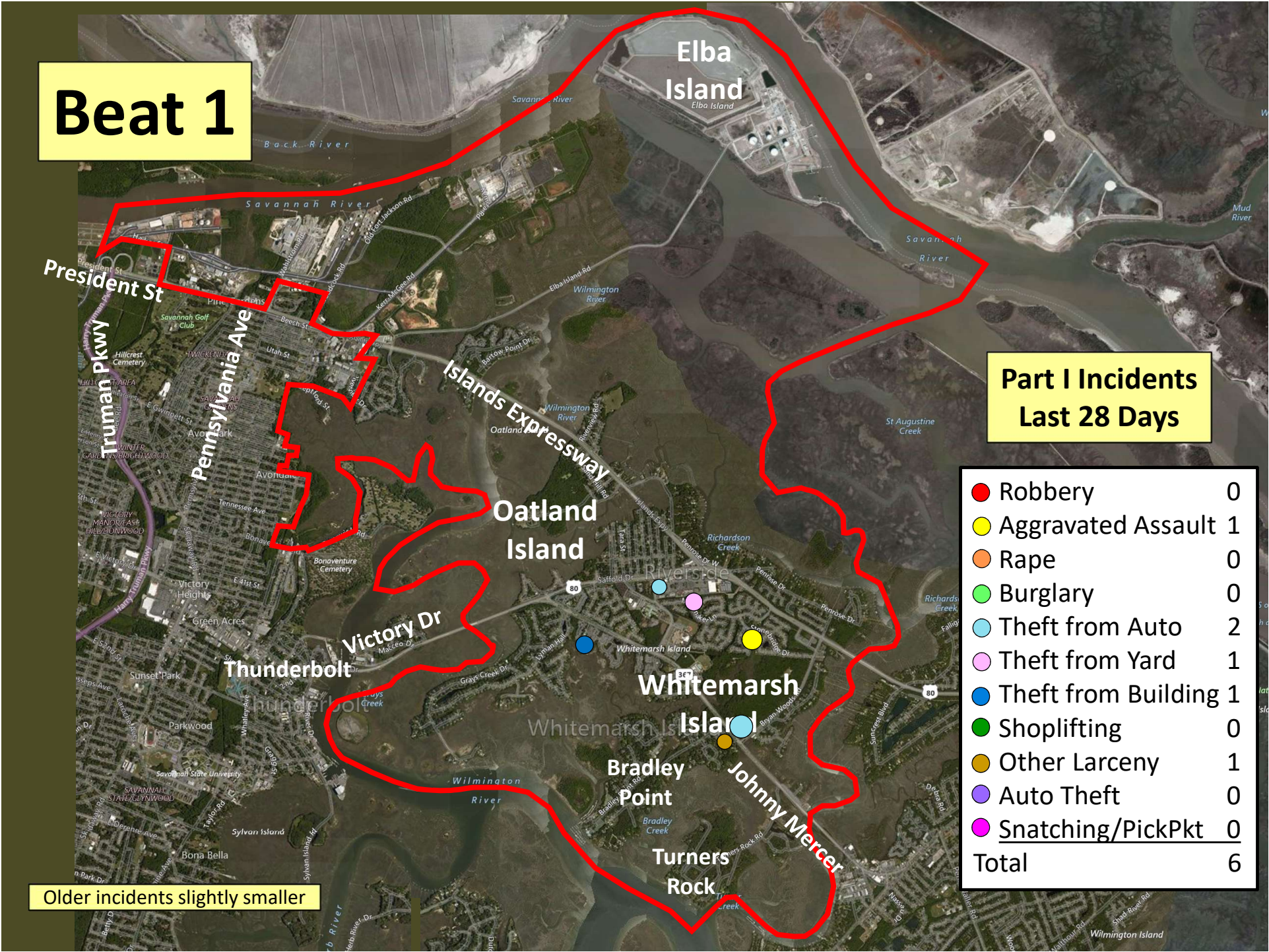


# Beat 1

## Part I Incidents Last 28 Days

● Robbery	0
● Aggravated Assault	1
● Rape	0
● Burglary	0
● Theft from Auto	2
● Theft from Yard	1
● Theft from Building	1
● Shoplifting	0
● Other Larceny	1
● Auto Theft	0
● Snatching/PickPkt	0
<b>Total</b>	<b>6</b>

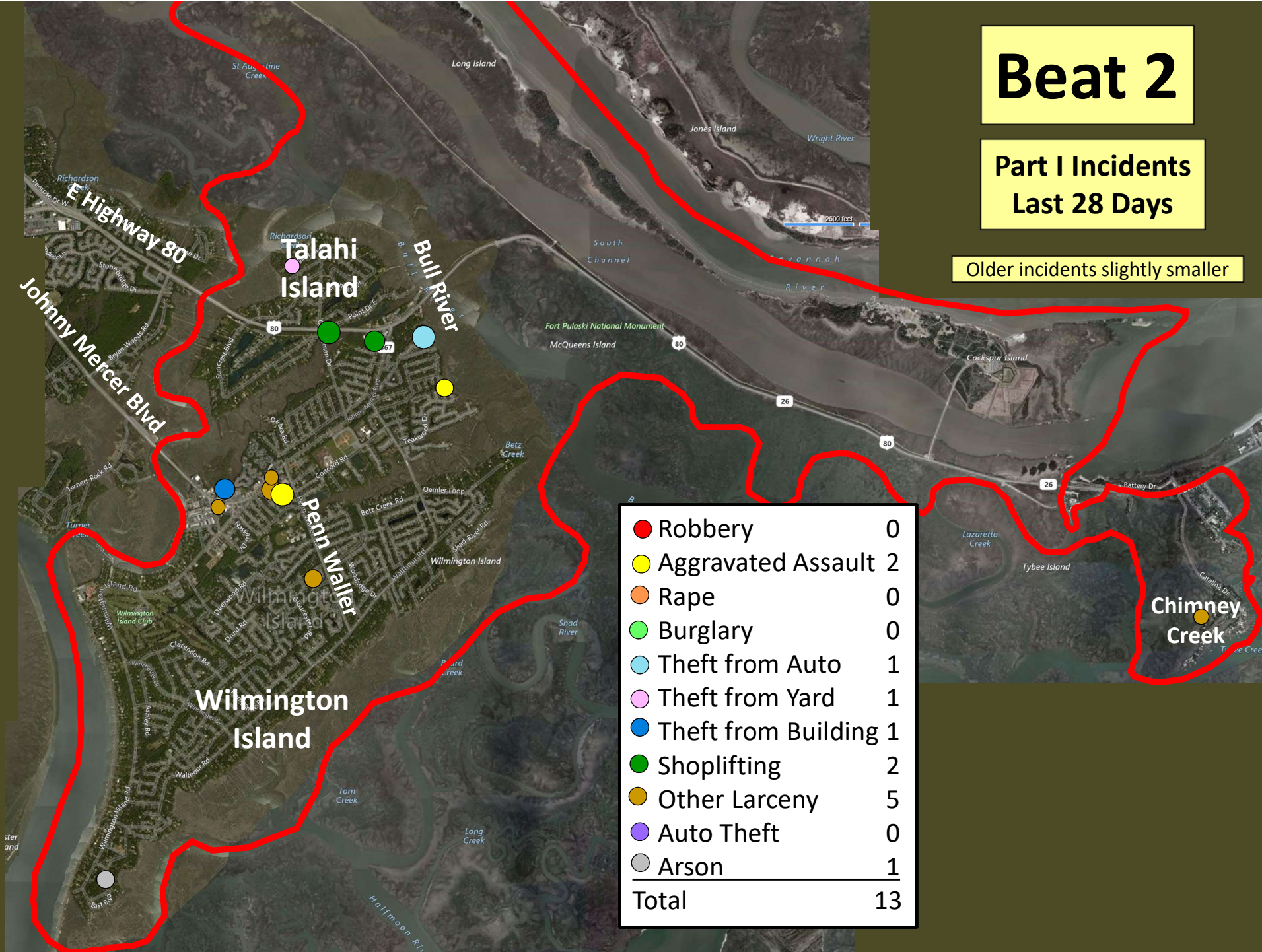
Older incidents slightly smaller



# Beat 2

## Part I Incidents Last 28 Days

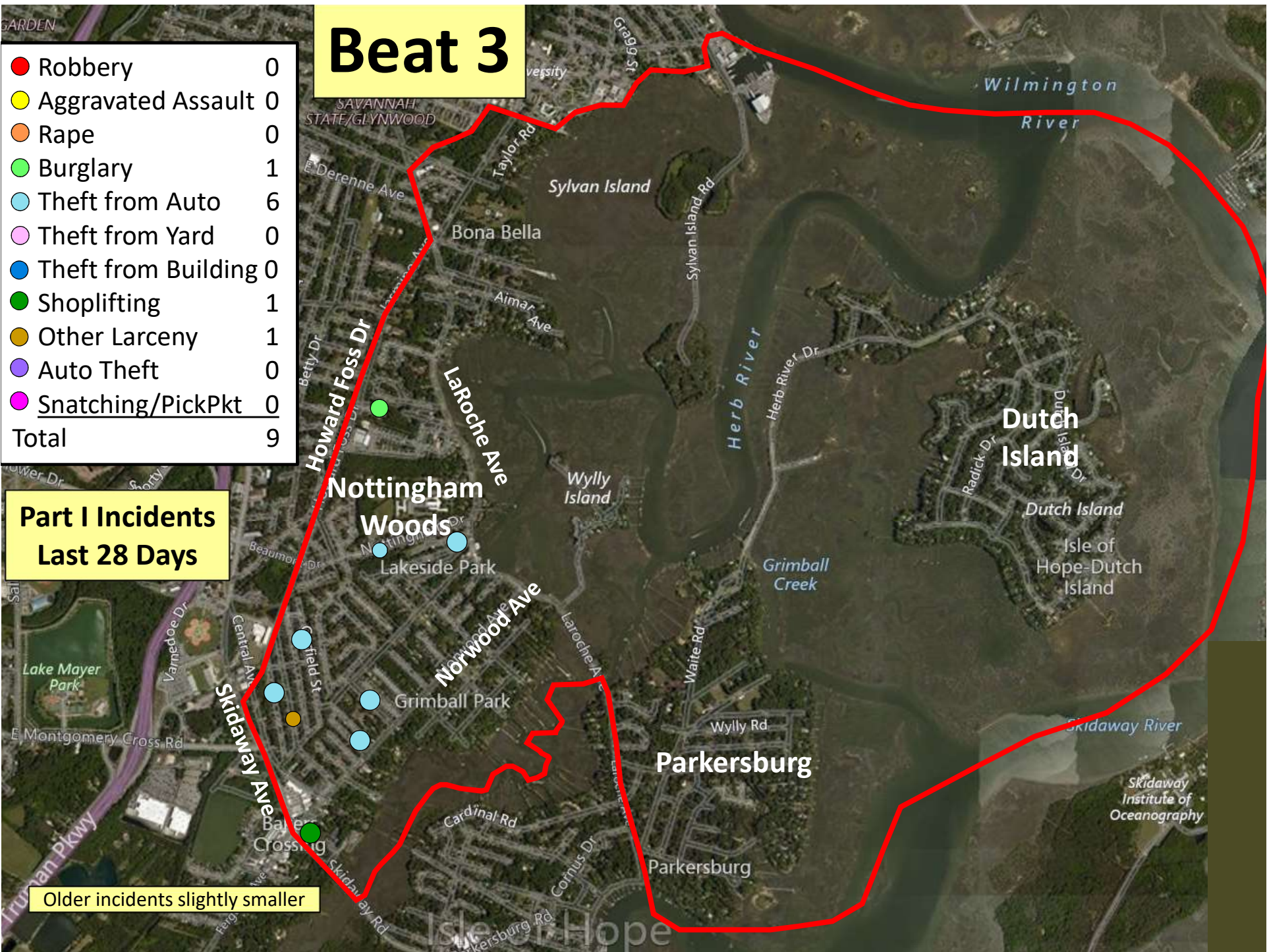
Older incidents slightly smaller



# Beat 3

● Robbery	0
● Aggravated Assault	0
● Rape	0
● Burglary	1
● Theft from Auto	6
● Theft from Yard	0
● Theft from Building	0
● Shoplifting	1
● Other Larceny	1
● Auto Theft	0
● Snatching/PickPkt	0
<b>Total</b>	<b>9</b>

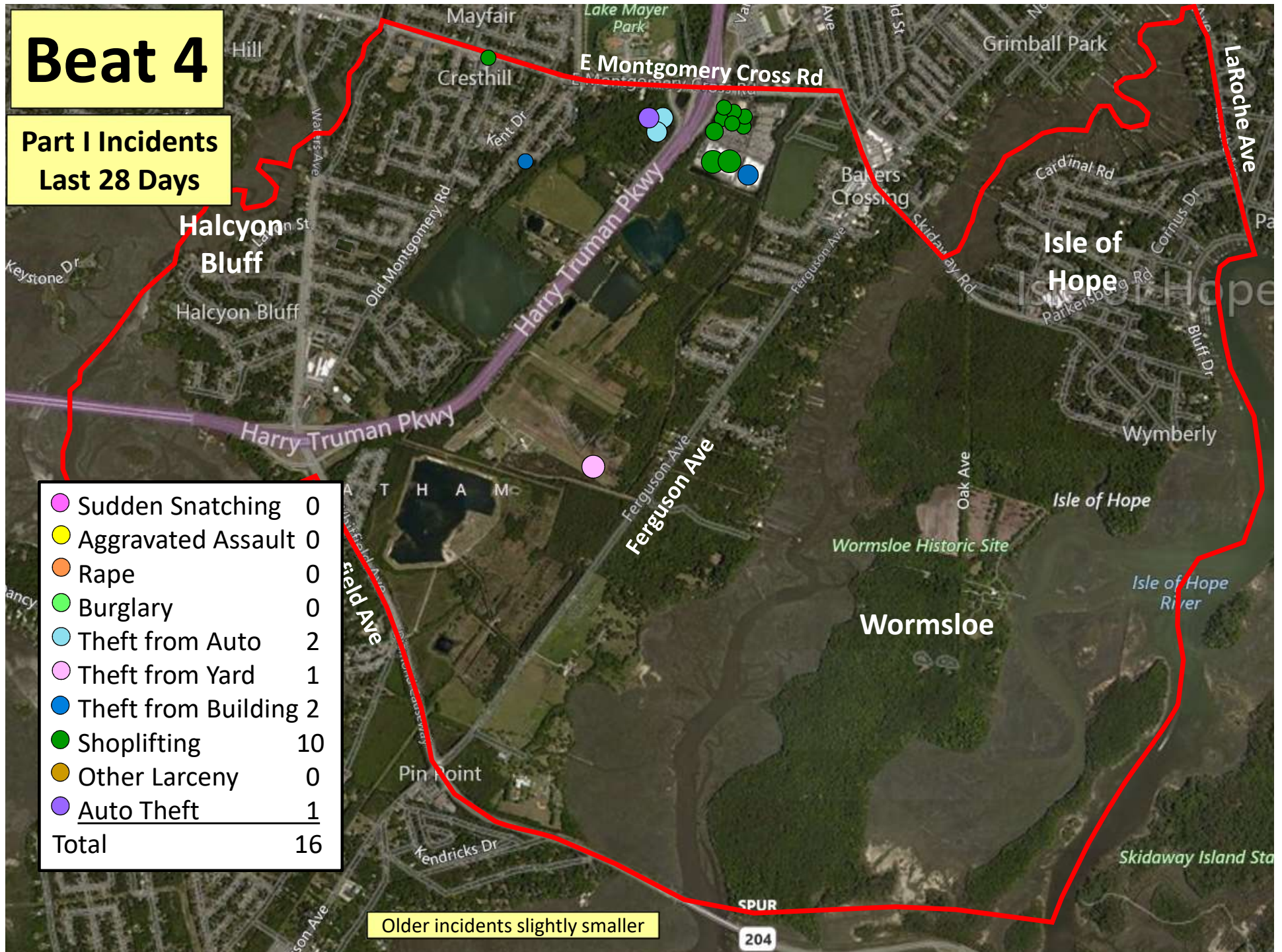
## Part I Incidents Last 28 Days



Older incidents slightly smaller

# Beat 4

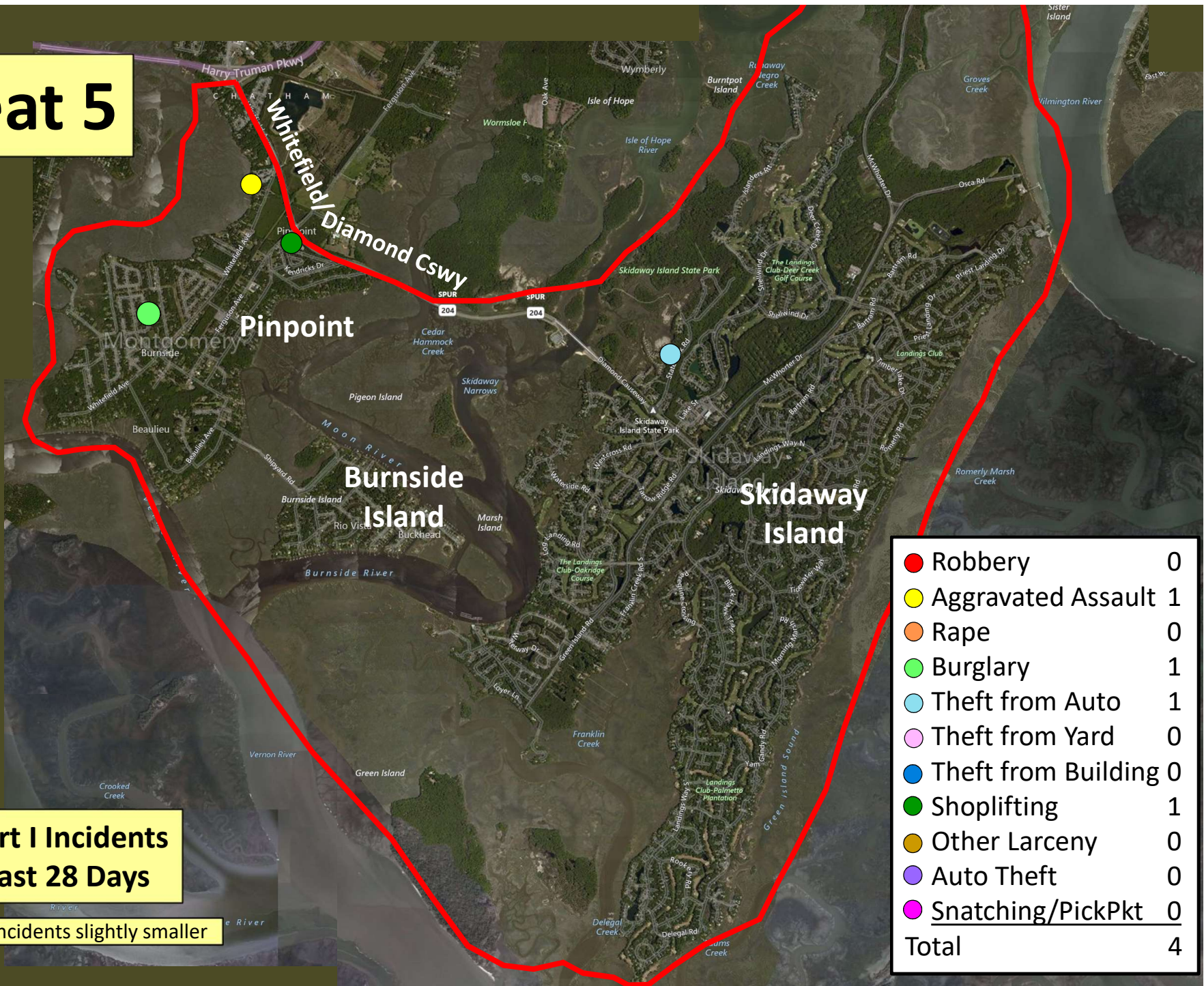
Part I Incidents  
Last 28 Days



● Sudden Snatching	0
● Aggravated Assault	0
● Rape	0
● Burglary	0
● Theft from Auto	2
● Theft from Yard	1
● Theft from Building	2
● Shoplifting	10
● Other Larceny	0
● Auto Theft	1
<b>Total</b>	<b>16</b>

Older incidents slightly smaller

# Beat 5



● Robbery	0
● Aggravated Assault	1
● Rape	0
● Burglary	1
● Theft from Auto	1
● Theft from Yard	0
● Theft from Building	0
● Shoplifting	1
● Other Larceny	0
● Auto Theft	0
● Snatching/PickPkt	0
<b>Total</b>	<b>4</b>

**Part I Incidents  
Last 28 Days**

Older incidents slightly smaller

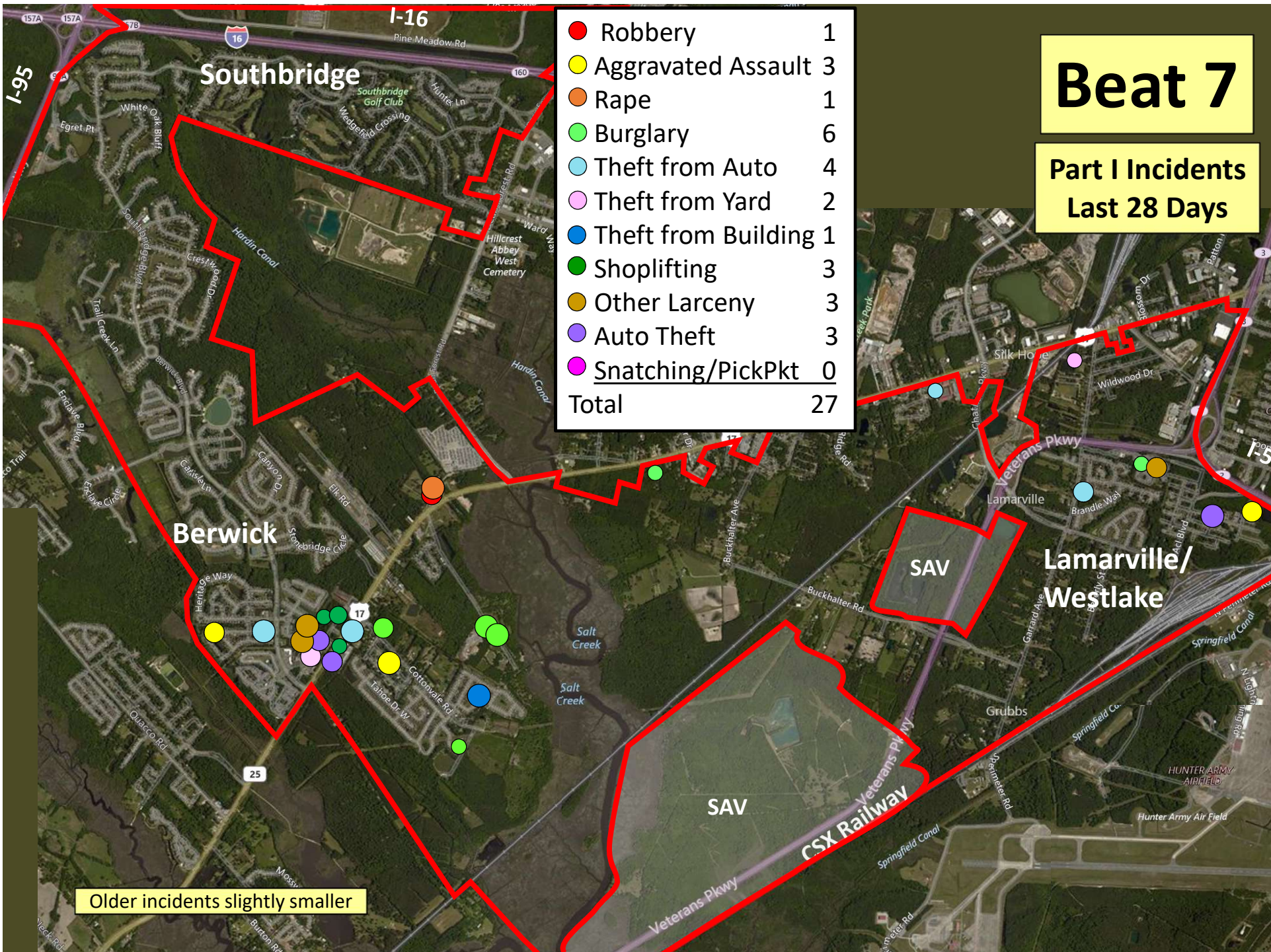
# Beat 6

Part I Incidents  
Last 28 Days

● Robbery	1
● Aggravated Assault	0
● Rape	0
● Burglary	0
● Theft from Auto	1
● Theft from Yard	2
● Theft from Building	0
● Shoplifting	0
● Other Larceny	0
● Auto Theft	0
● Snatching/PickPkt	0
<b>Total</b>	<b>4</b>



Older incidents slightly smaller



# Beat 7

Part I Incidents  
Last 28 Days

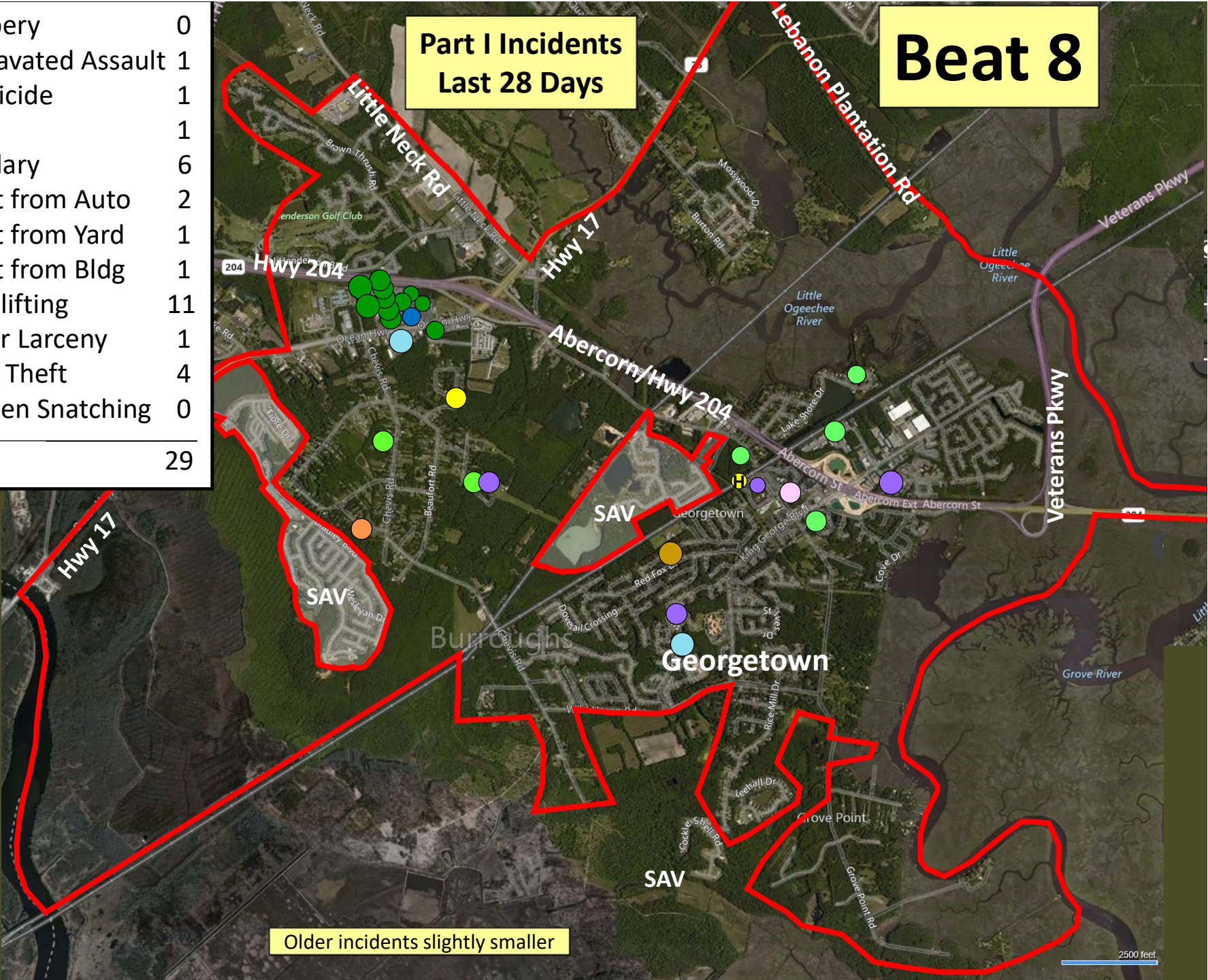
● Robbery	1
● Aggravated Assault	3
● Rape	1
● Burglary	6
● Theft from Auto	4
● Theft from Yard	2
● Theft from Building	1
● Shoplifting	3
● Other Larceny	3
● Auto Theft	3
● Snatching/PickPkt	0
<b>Total</b>	<b>27</b>

Older incidents slightly smaller

● Robbery	0
● Aggravated Assault	1
● Homicide	1
● Rape	1
● Burglary	6
● Theft from Auto	2
● Theft from Yard	1
● Theft from Bldg	1
● Shoplifting	11
● Other Larceny	1
● Auto Theft	4
● Sudden Snatching	0
<b>Total</b>	<b>29</b>

**Part I Incidents  
Last 28 Days**

**Beat 8**



Older incidents slightly smaller

2500 feet



# Beat 9

Part I Incidents  
Last 28 Days

● Robbery	0
● Aggravated Assault	8
● Rape	0
● Burglary	3
● Theft from Auto	3
● Theft from Yard	3
● Theft from Building	1
● Shoplifting	0
● Other Larceny	2
● Auto Theft	2
● Snatching/PickPkt	0
<b>Total</b>	<b>20</b>



Older incidents slightly smaller