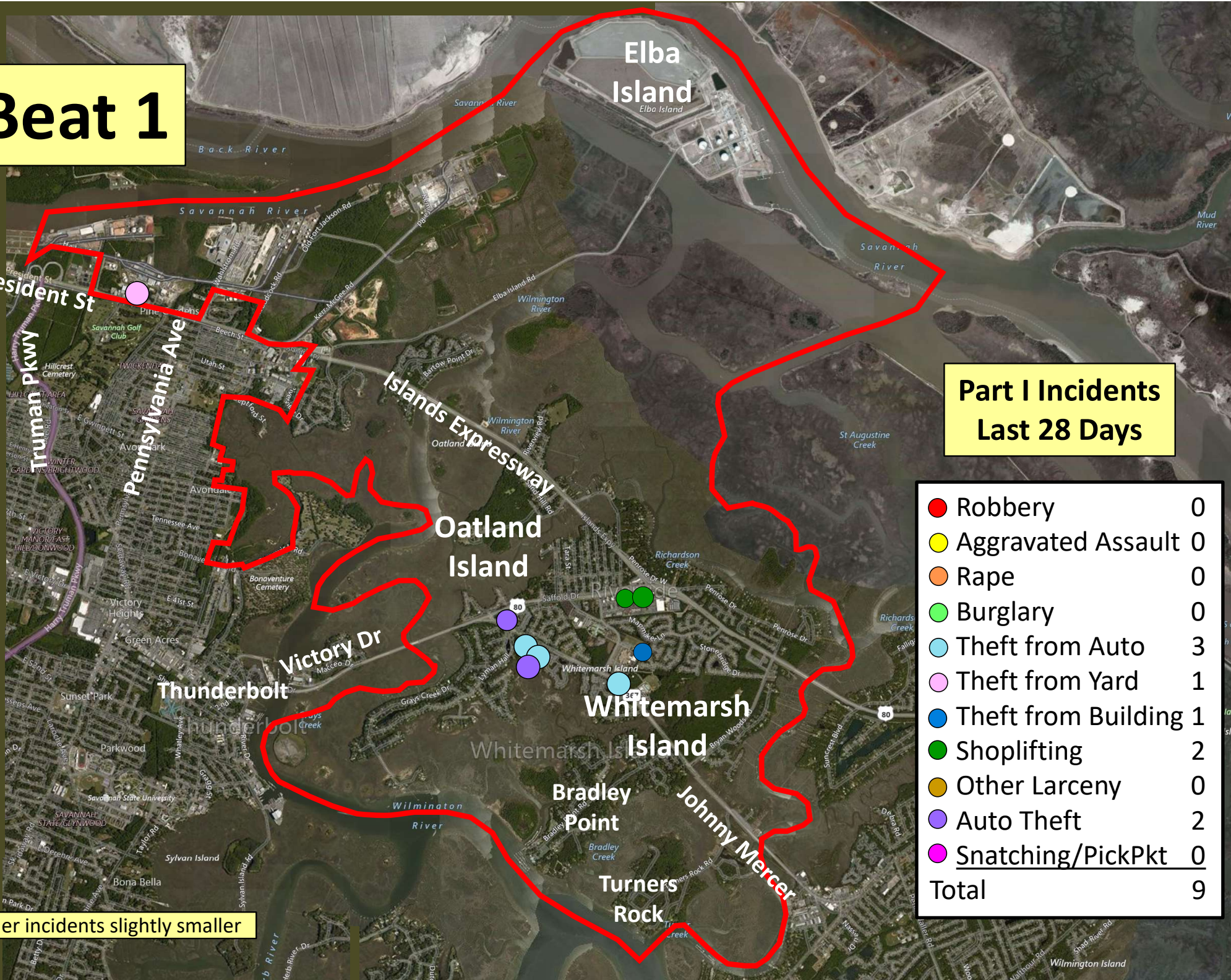


# Beat 1

## Part I Incidents Last 28 Days

● Robbery	0
● Aggravated Assault	0
● Rape	0
● Burglary	0
● Theft from Auto	3
● Theft from Yard	1
● Theft from Building	1
● Shoplifting	2
● Other Larceny	0
● Auto Theft	2
● Snatching/PickPkt	0
<b>Total</b>	<b>9</b>

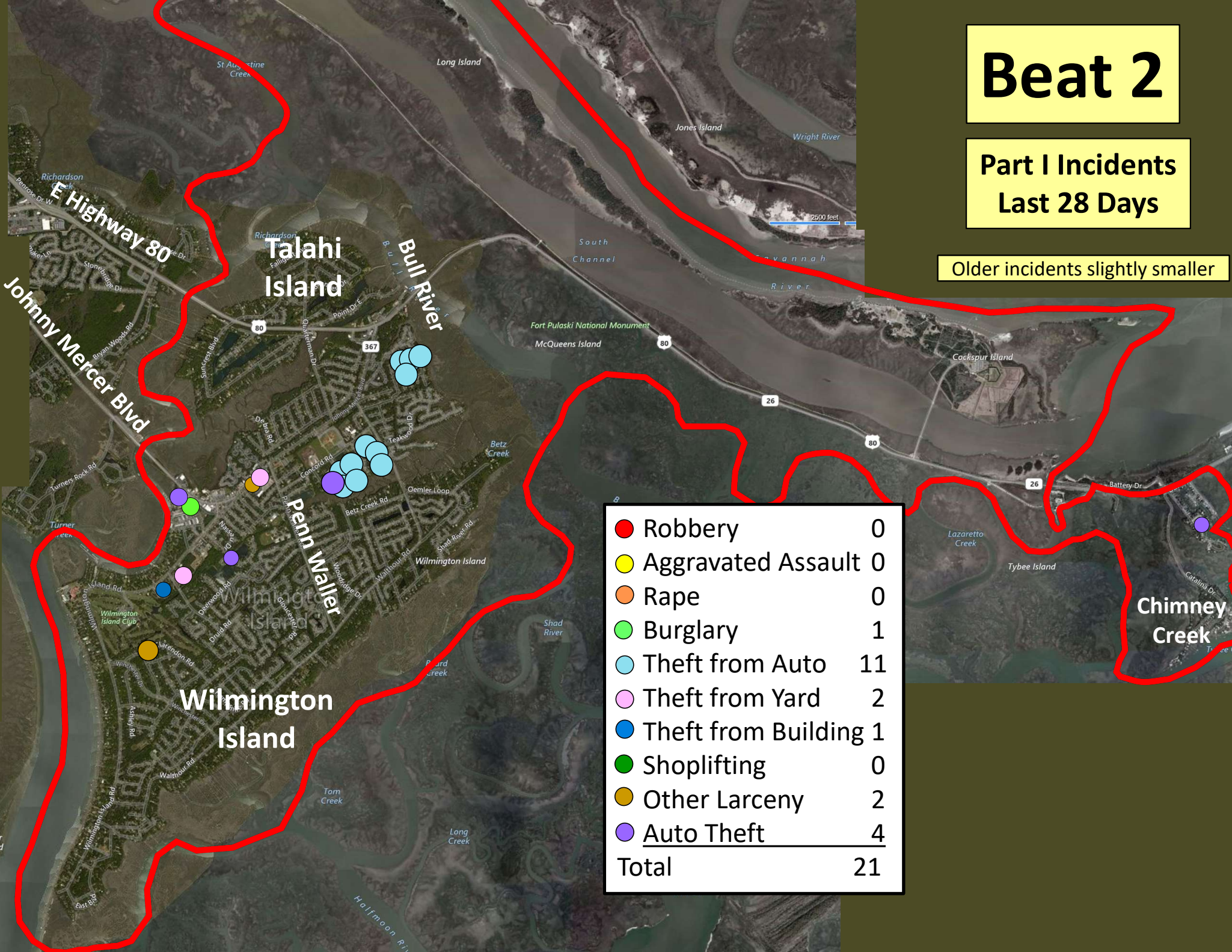
Older incidents slightly smaller



# Beat 2

Part I Incidents  
Last 28 Days

Older incidents slightly smaller

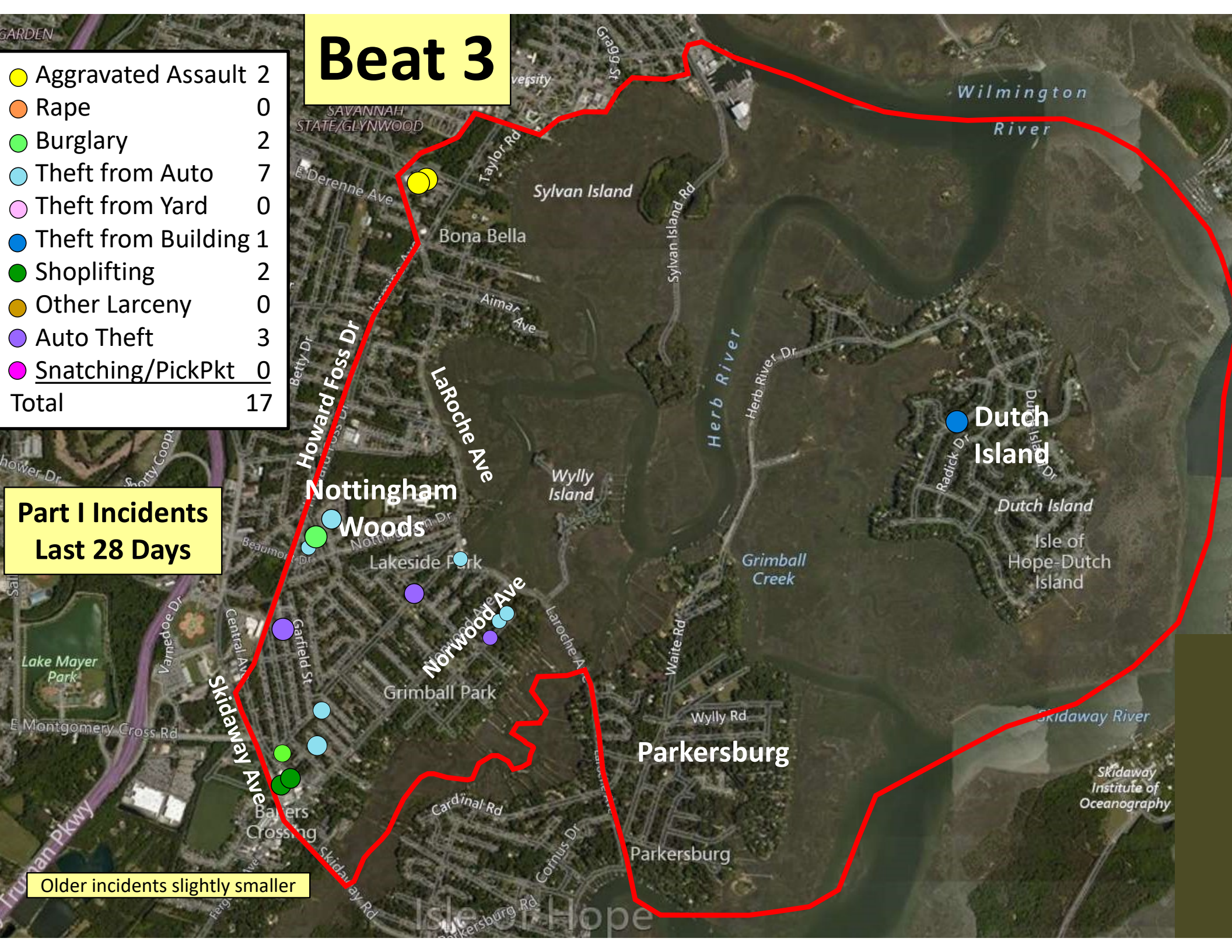


● Robbery	0
● Aggravated Assault	0
● Rape	0
● Burglary	1
● Theft from Auto	11
● Theft from Yard	2
● Theft from Building	1
● Shoplifting	0
● Other Larceny	2
● Auto Theft	4
<b>Total</b>	<b>21</b>

# Beat 3

Aggravated Assault	2
Rape	0
Burglary	2
Theft from Auto	7
Theft from Yard	0
Theft from Building	1
Shoplifting	2
Other Larceny	0
Auto Theft	3
Snatching/PickPkt	0
<b>Total</b>	<b>17</b>

## Part I Incidents Last 28 Days



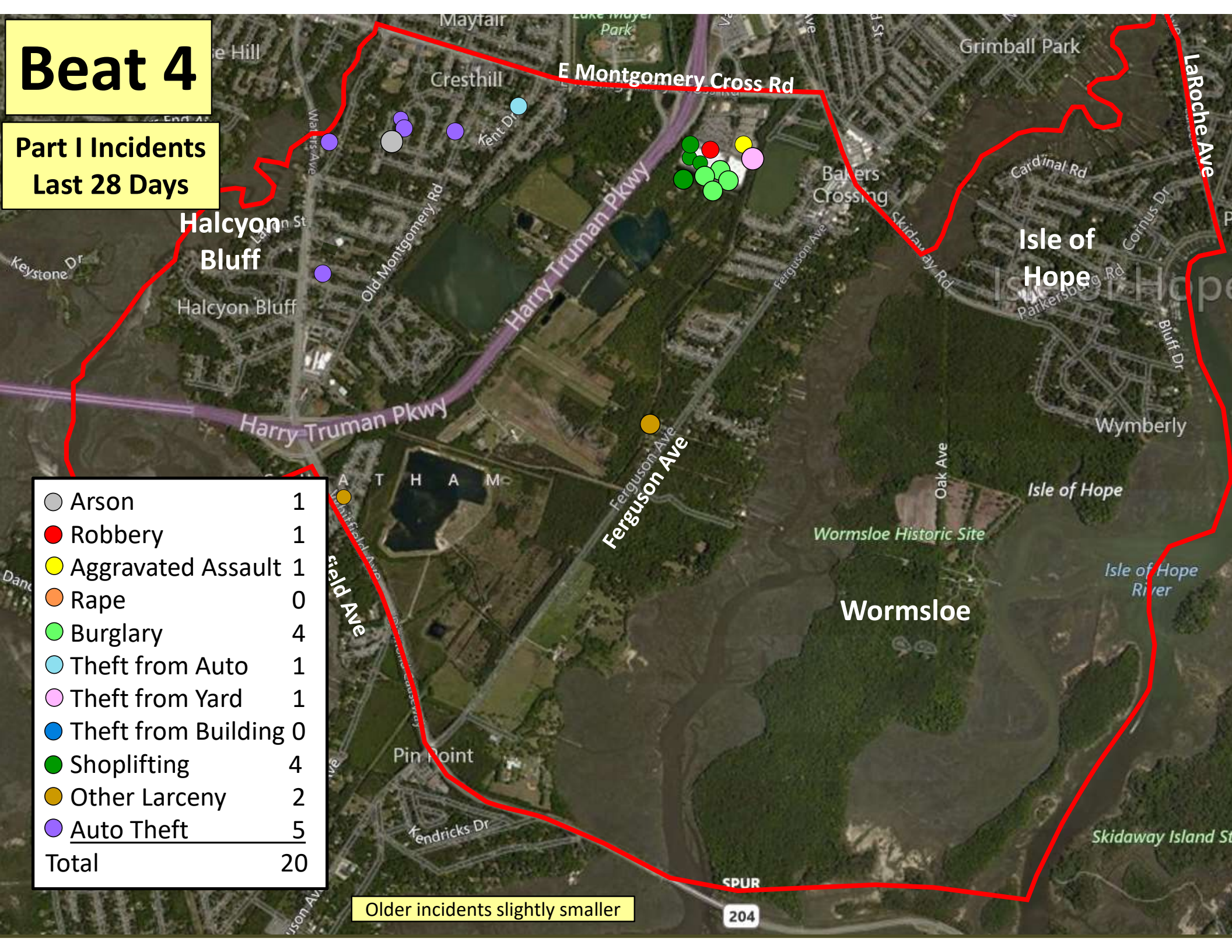
Older incidents slightly smaller

# Beat 4

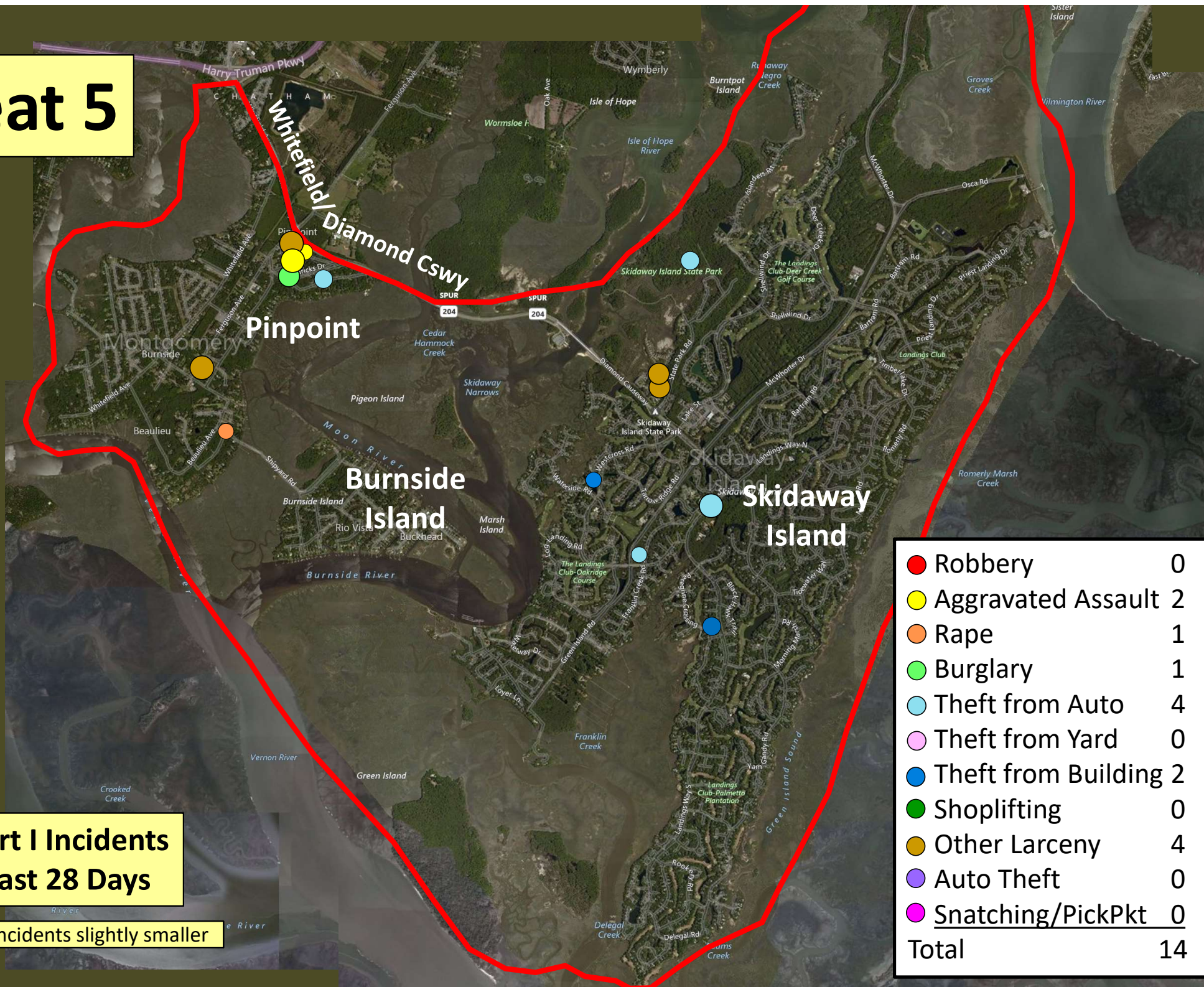
Part I Incidents  
Last 28 Days

Arson	1
Robbery	1
Aggravated Assault	1
Rape	0
Burglary	4
Theft from Auto	1
Theft from Yard	1
Theft from Building	0
Shoplifting	4
Other Larceny	2
Auto Theft	5
<b>Total</b>	<b>20</b>

Older incidents slightly smaller



# Beat 5



**Part I Incidents  
Last 28 Days**

Older incidents slightly smaller

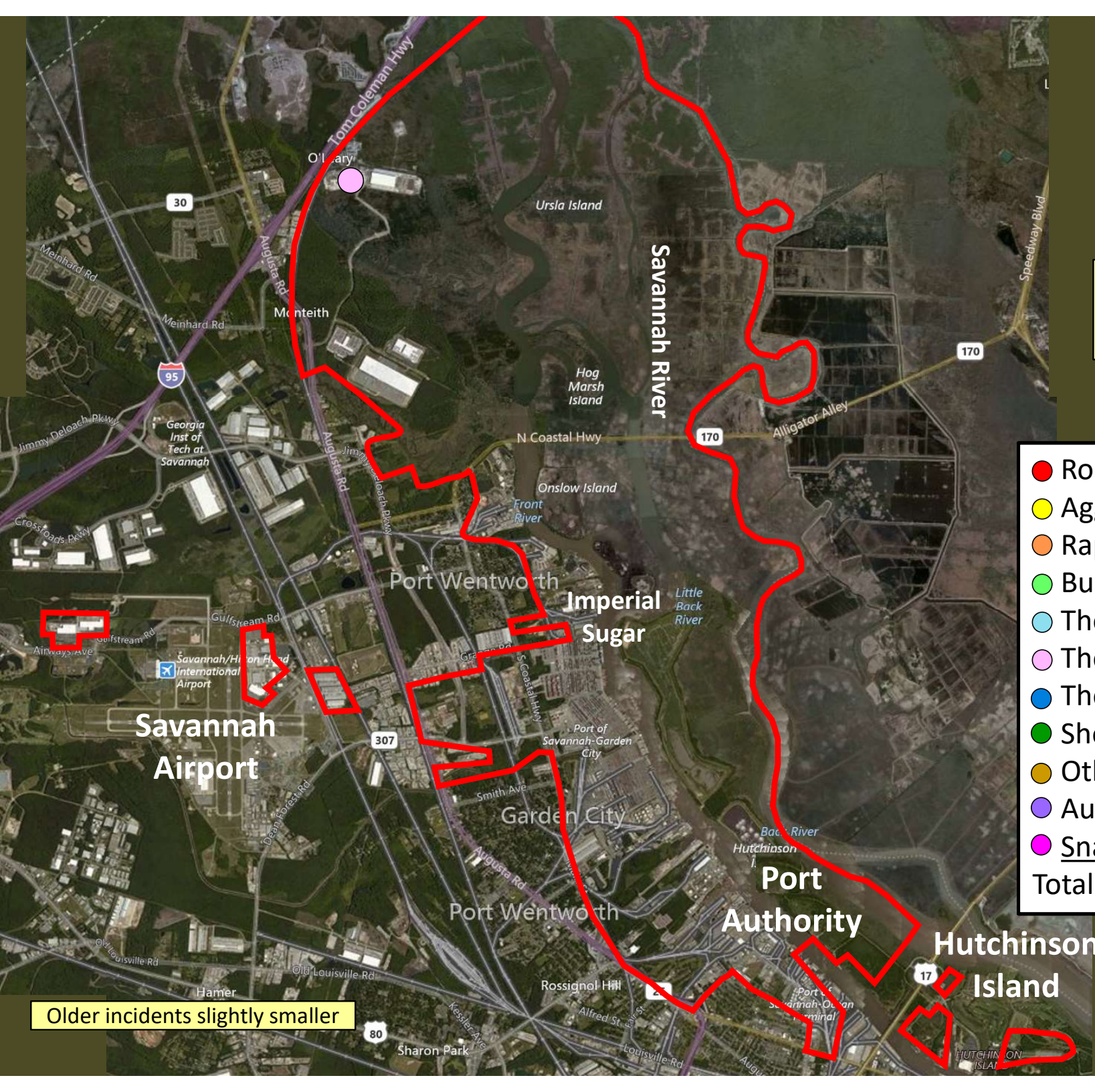
● Robbery	0
● Aggravated Assault	2
● Rape	1
● Burglary	1
● Theft from Auto	4
● Theft from Yard	0
● Theft from Building	2
● Shoplifting	0
● Other Larceny	4
● Auto Theft	0
● Snatching/PickPkt	0
<b>Total</b>	<b>14</b>

# Beat 6

Part I Incidents  
Last 28 Days

● Robbery	0
● Aggravated Assault	0
● Rape	0
● Burglary	0
● Theft from Auto	0
● Theft from Yard	1
● Theft from Building	0
● Shoplifting	0
● Other Larceny	0
● Auto Theft	0
● Snatching/PickPkt	0
<b>Total</b>	<b>1</b>

Older incidents slightly smaller

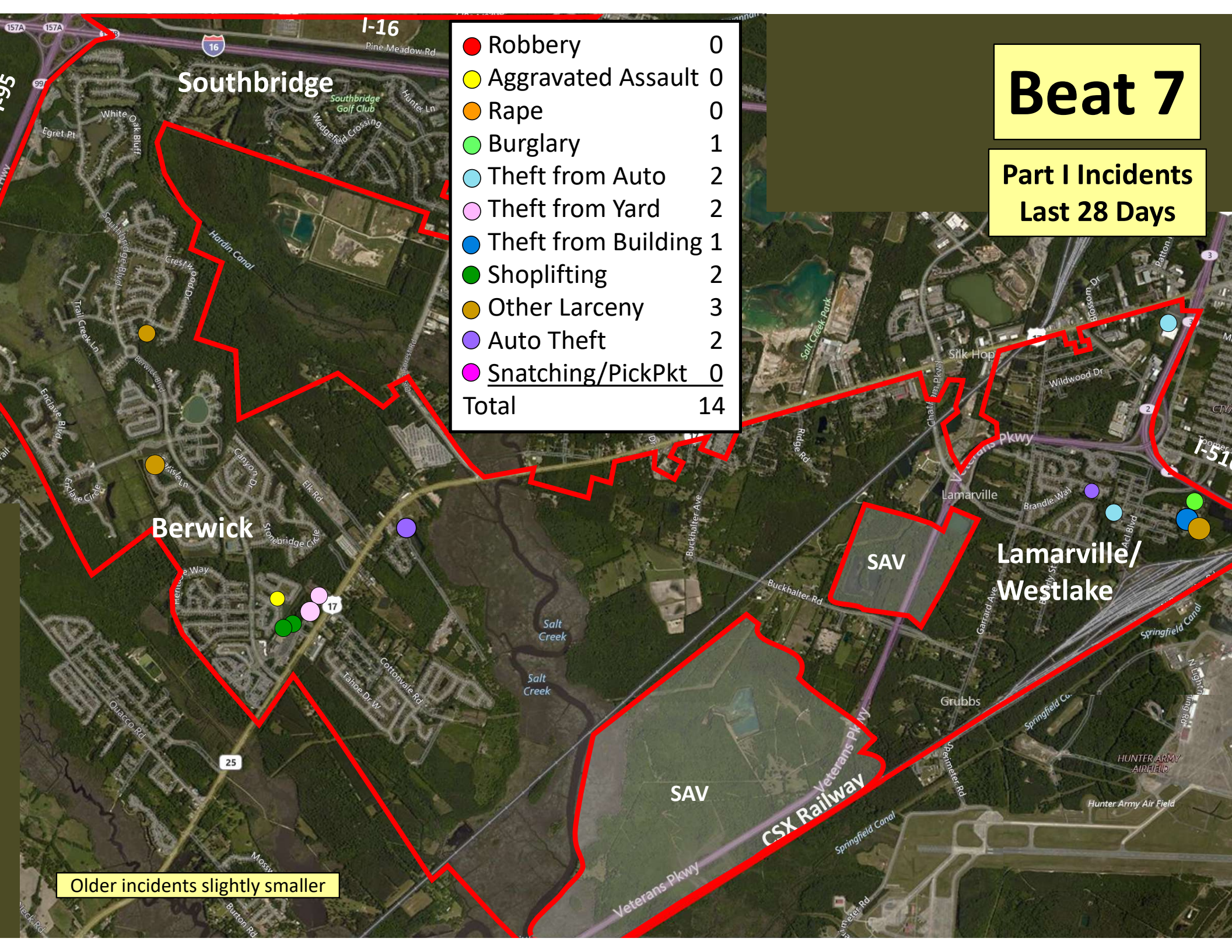


# Beat 7

Part I Incidents  
Last 28 Days

● Robbery	0
● Aggravated Assault	0
● Rape	0
● Burglary	1
● Theft from Auto	2
● Theft from Yard	2
● Theft from Building	1
● Shoplifting	2
● Other Larceny	3
● Auto Theft	2
● Snatching/PickPkt	0
<b>Total</b>	<b>14</b>

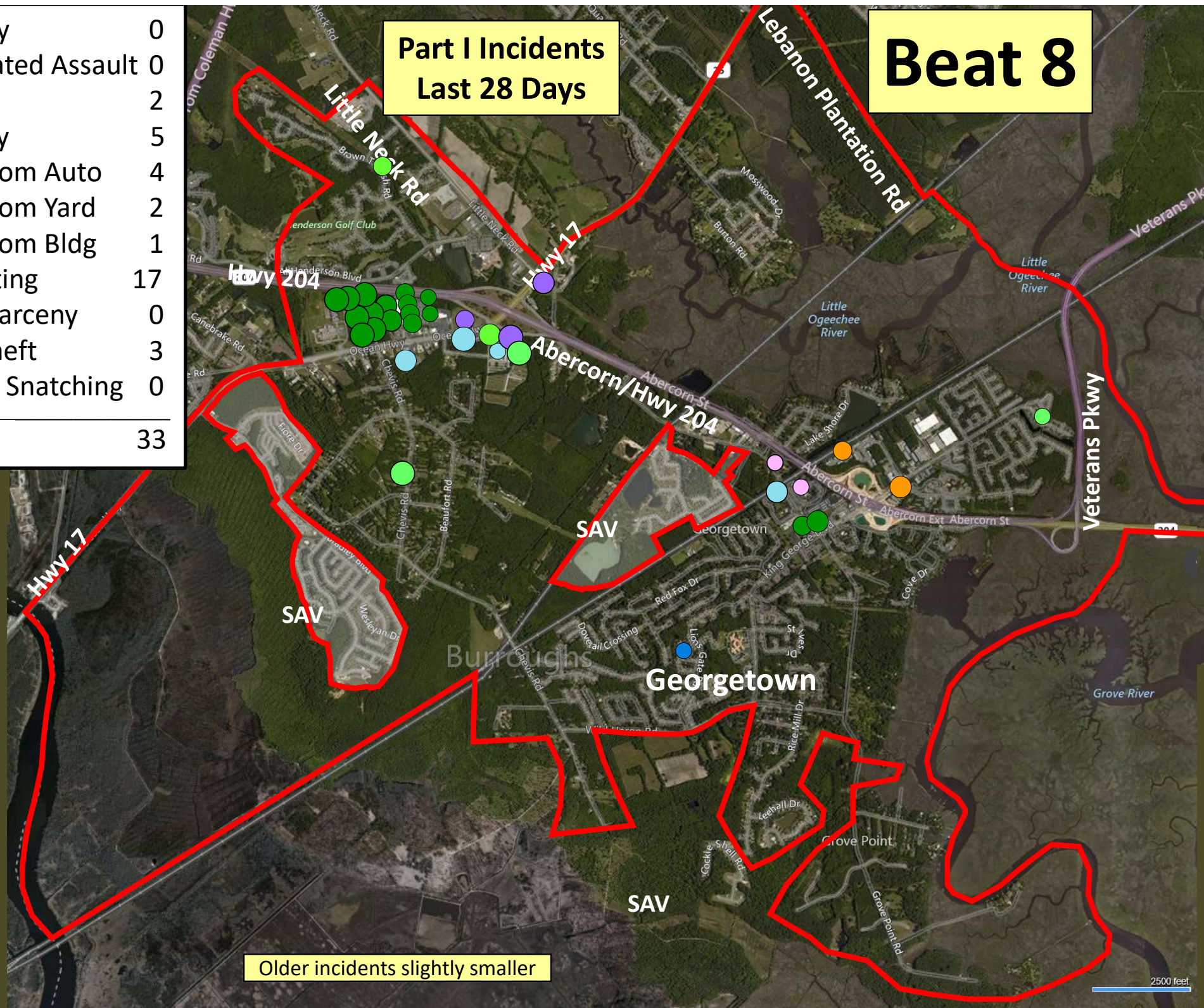
Older incidents slightly smaller



# Beat 8

## Part I Incidents Last 28 Days

● Robbery	0
● Aggravated Assault	0
● Rape	2
● Burglary	5
● Theft from Auto	4
● Theft from Yard	2
● Theft from Bldg	1
● Shoplifting	17
● Other Larceny	0
● Auto Theft	3
● Sudden Snatching	0
<b>Total</b>	<b>33</b>



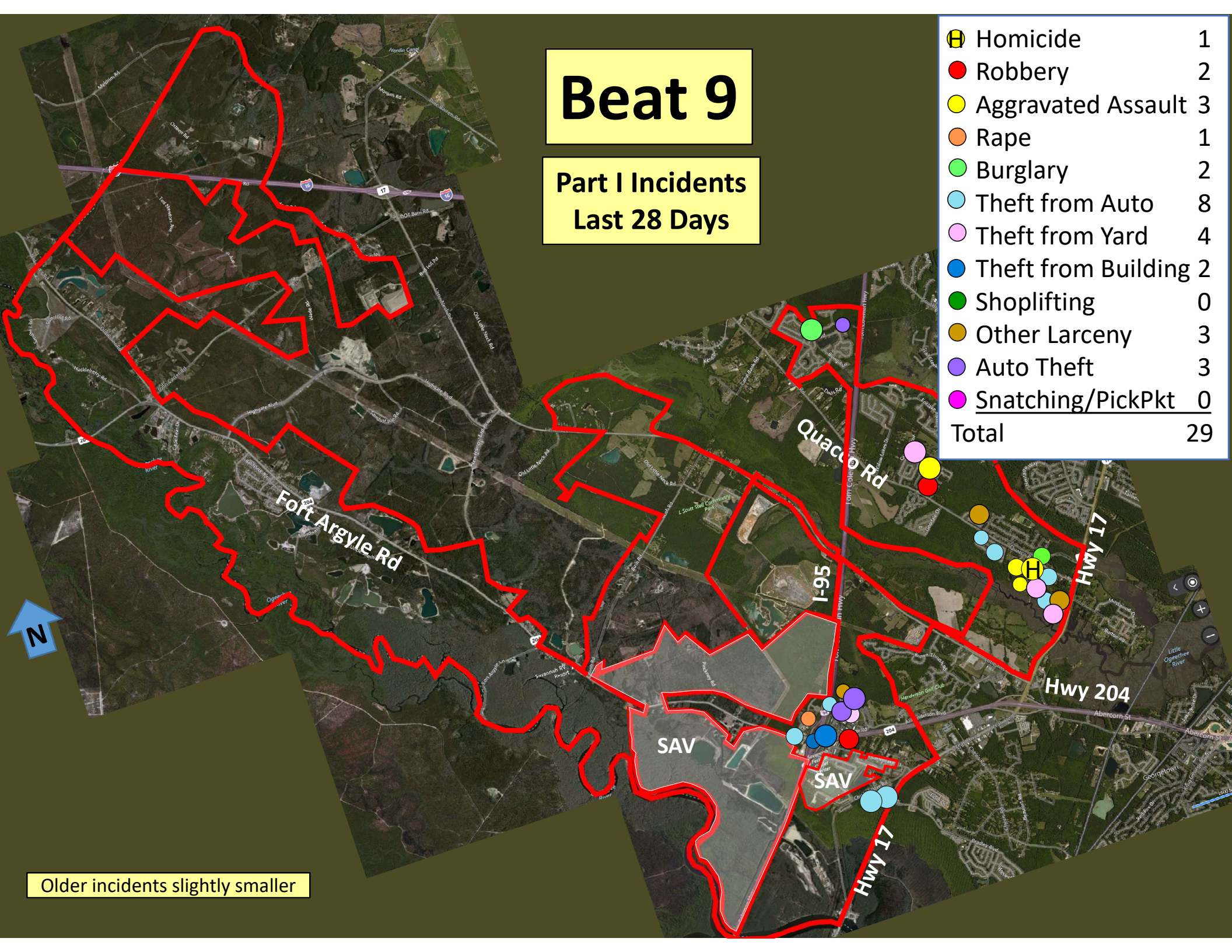
Older incidents slightly smaller



# Beat 9

Part I Incidents  
Last 28 Days

Homicide	1
Robbery	2
Aggravated Assault	3
Rape	1
Burglary	2
Theft from Auto	8
Theft from Yard	4
Theft from Building	2
Shoplifting	0
Other Larceny	3
Auto Theft	3
Snatching/PickPkt	0
<b>Total</b>	<b>29</b>



Older incidents slightly smaller