

# Beat 1

## Part I Incidents Last 28 Days

● Robbery	0
● Aggravated Assault	1
● Rape	0
● Burglary	0
● Theft from Auto	2
● Theft from Yard	2
● Theft from Building	1
● Shoplifting	2
● Other Larceny	0
● Auto Theft	0
● <u>Snatching/PickPkt</u>	<u>0</u>
Total	8

Older incidents slightly smaller

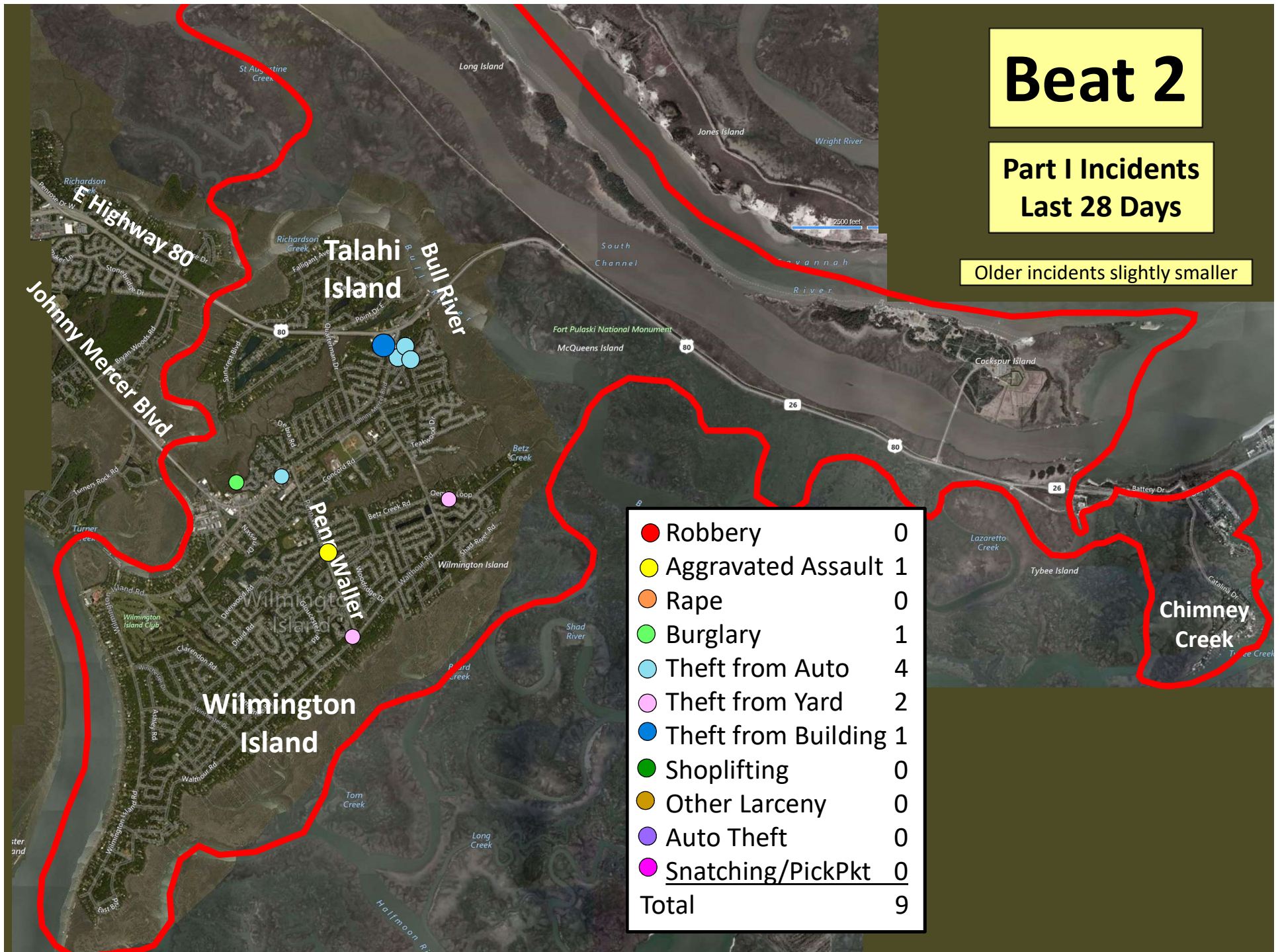


# Beat 2

Part I Incidents  
Last 28 Days

Older incidents slightly smaller

● Robbery	0
● Aggravated Assault	1
● Rape	0
● Burglary	1
● Theft from Auto	4
● Theft from Yard	2
● Theft from Building	1
● Shoplifting	0
● Other Larceny	0
● Auto Theft	0
● Snatching/PickPkt	0
Total	9



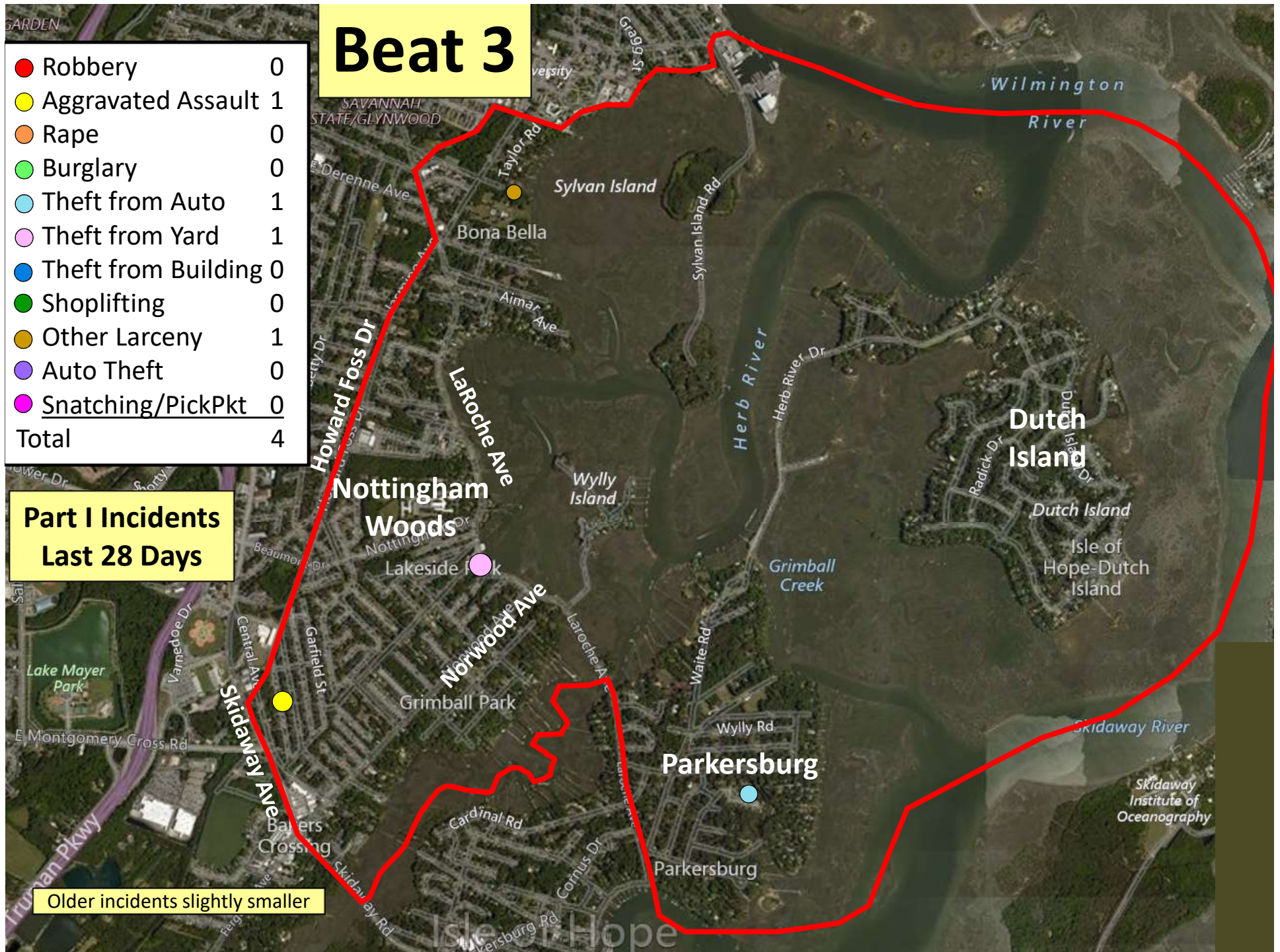


# Beat 3

● Robbery	0
● Aggravated Assault	1
● Rape	0
● Burglary	0
● Theft from Auto	1
● Theft from Yard	1
● Theft from Building	0
● Shoplifting	0
● Other Larceny	1
● Auto Theft	0
● Snatching/PickPkt	0
Total	4

## Part I Incidents Last 28 Days

Older incidents slightly smaller



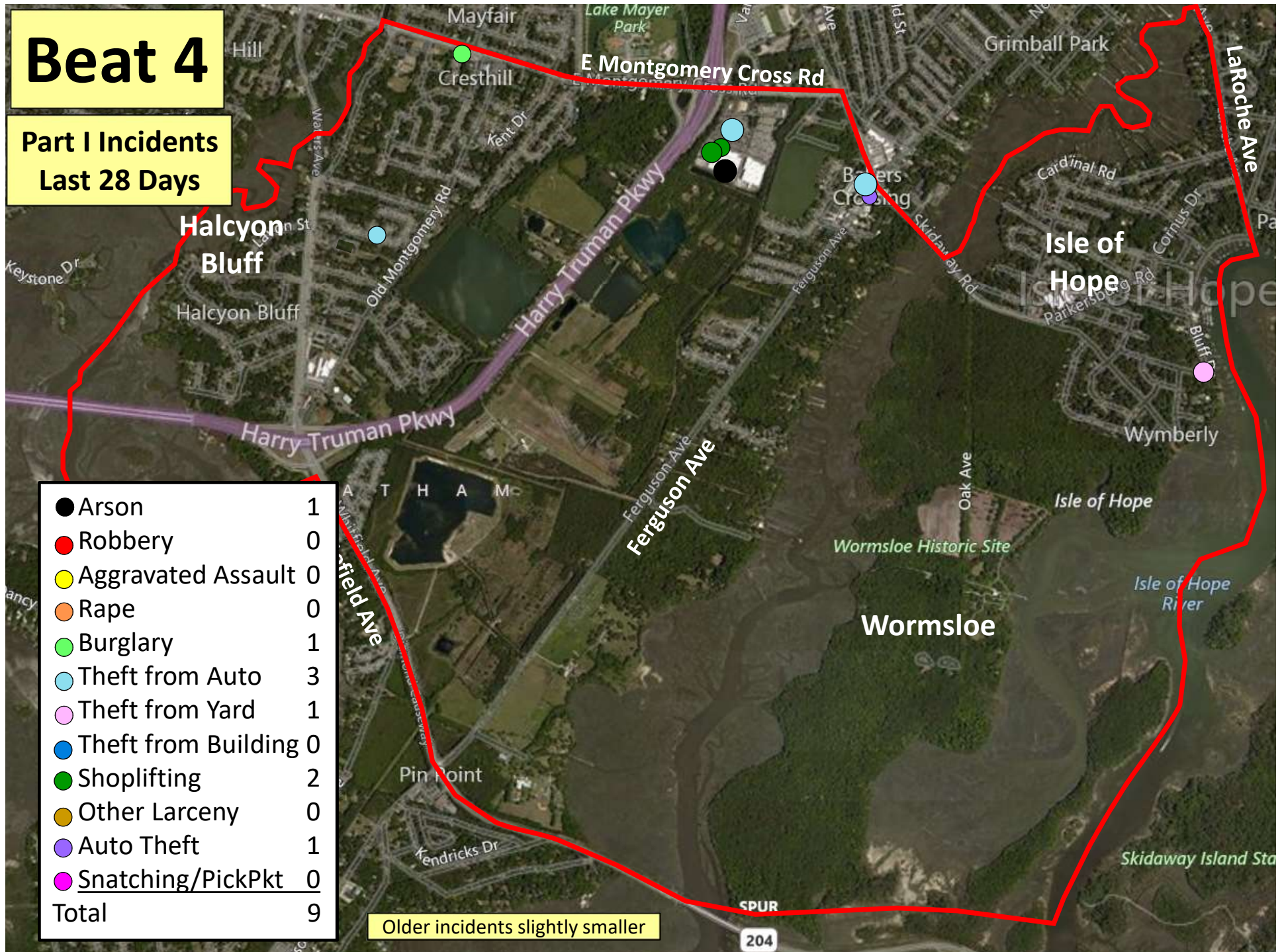


# Beat 4

## Part I Incidents Last 28 Days

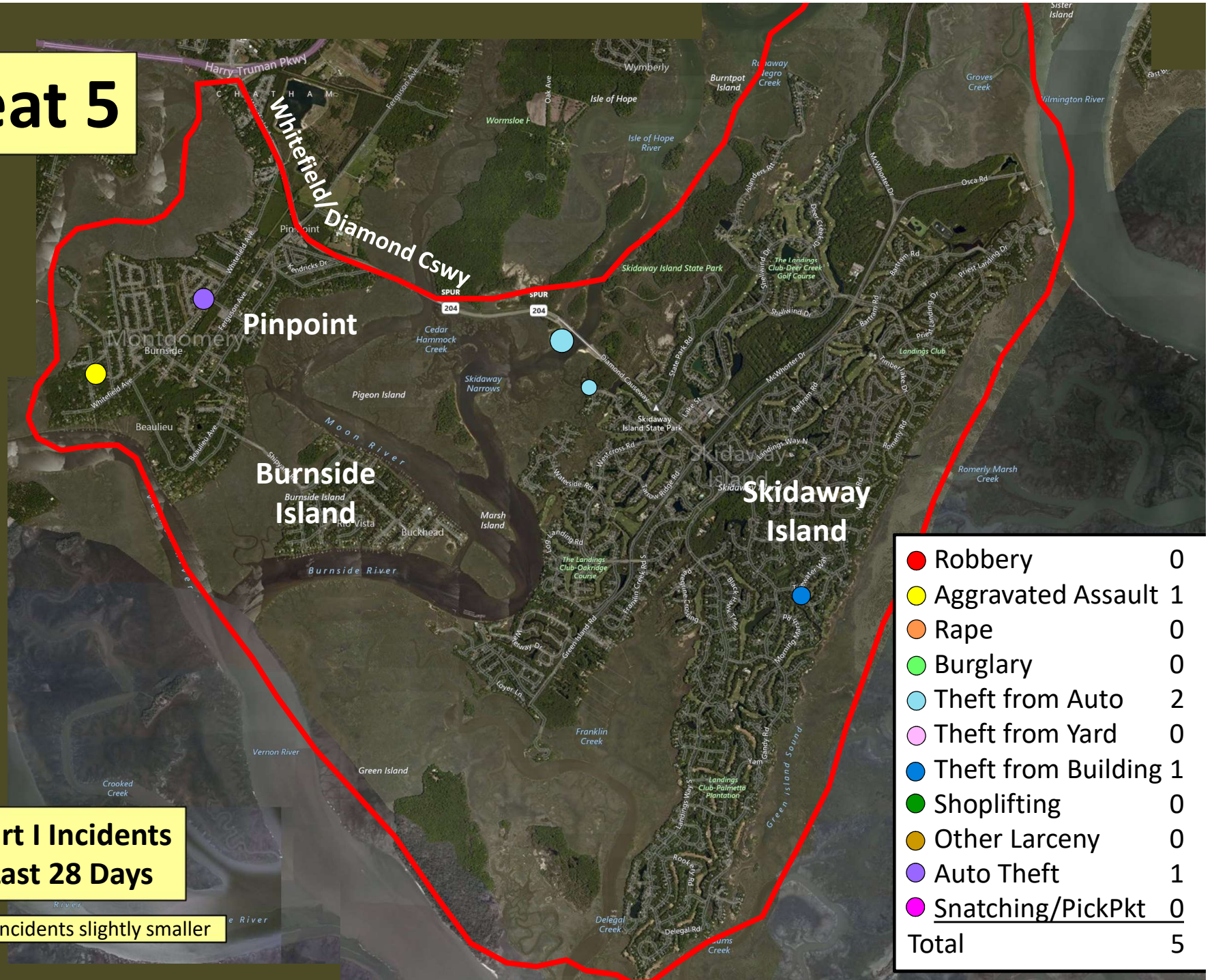
● Arson	1
● Robbery	0
● Aggravated Assault	0
● Rape	0
● Burglary	1
● Theft from Auto	3
● Theft from Yard	1
● Theft from Building	0
● Shoplifting	2
● Other Larceny	0
● Auto Theft	1
● Snatching/PickPkt	0
Total	9

Older incidents slightly smaller





# Beat 5



**Part I Incidents  
Last 28 Days**

Older incidents slightly smaller

● Robbery	0
● Aggravated Assault	1
● Rape	0
● Burglary	0
● Theft from Auto	2
● Theft from Yard	0
● Theft from Building	1
● Shoplifting	0
● Other Larceny	0
● Auto Theft	1
● Snatching/PickPkt	0
<b>Total</b>	<b>5</b>



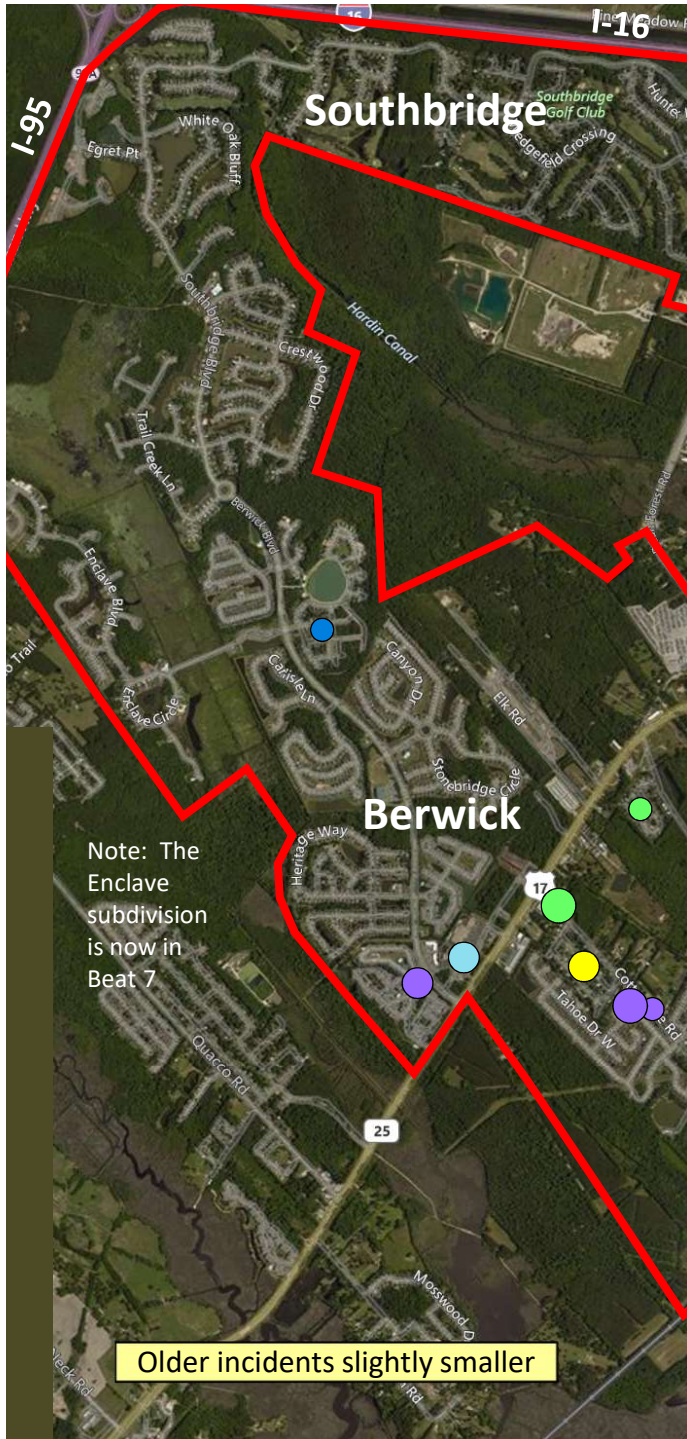
# Beat 6

Part I Incidents  
Last 28 Days

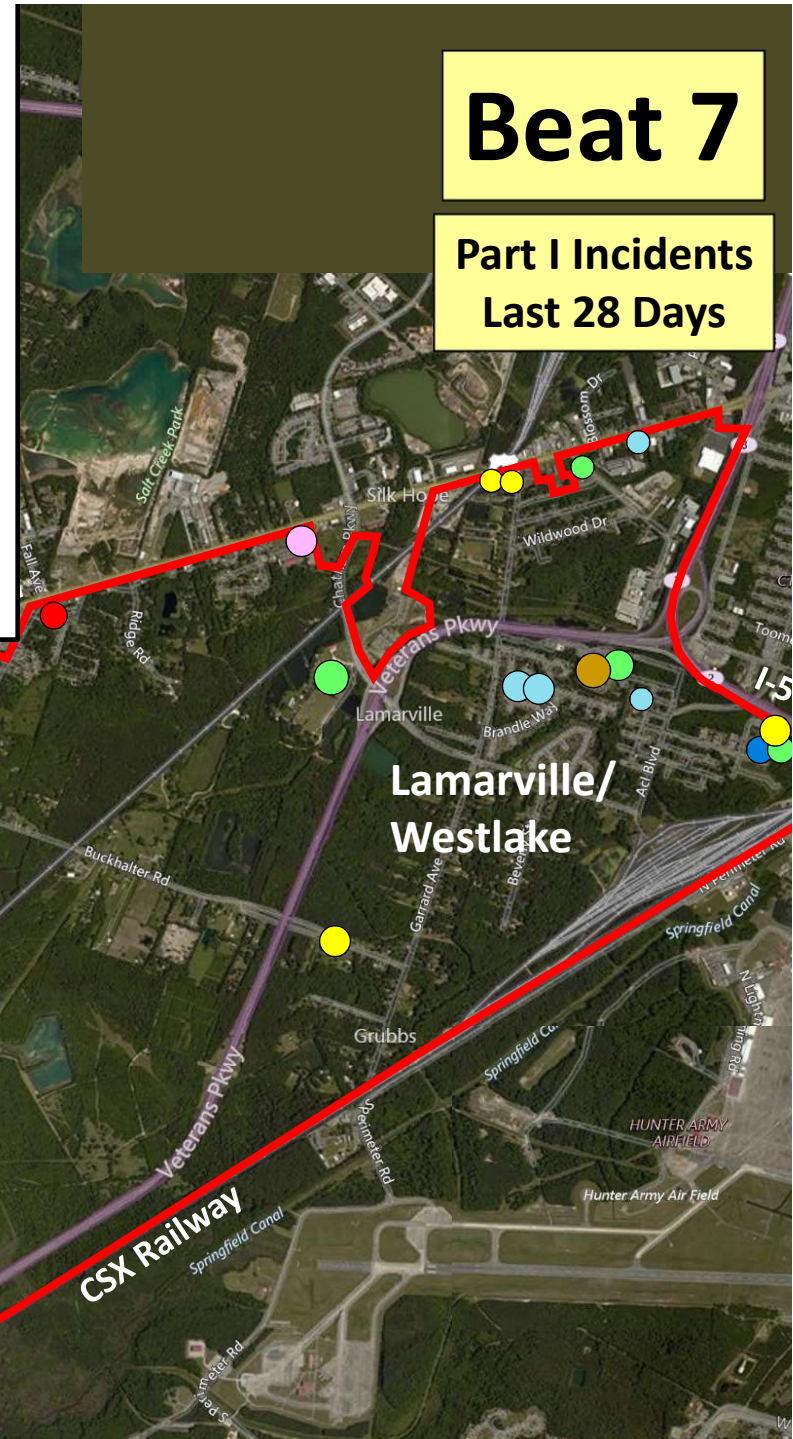
● Robbery	0
● Aggravated Assault	0
● Rape	0
● Burglary	0
● Theft from Auto	0
● Theft from Yard	0
● Theft from Building	0
● Shoplifting	0
● Other Larceny	1
● Auto Theft	1
● Snatching/PickPkt	0
Total	2

Older incidents slightly smaller





● Robbery	1
● Aggravated Assault	5
● Rape	0
● Burglary	6
● Theft from Auto	5
● Theft from Yard	1
● Theft from Building	2
● Shoplifting	0
● Other Larceny	1
● Auto Theft	3
● Snatching/PickPkt	0
Total	24



**Beat 7**

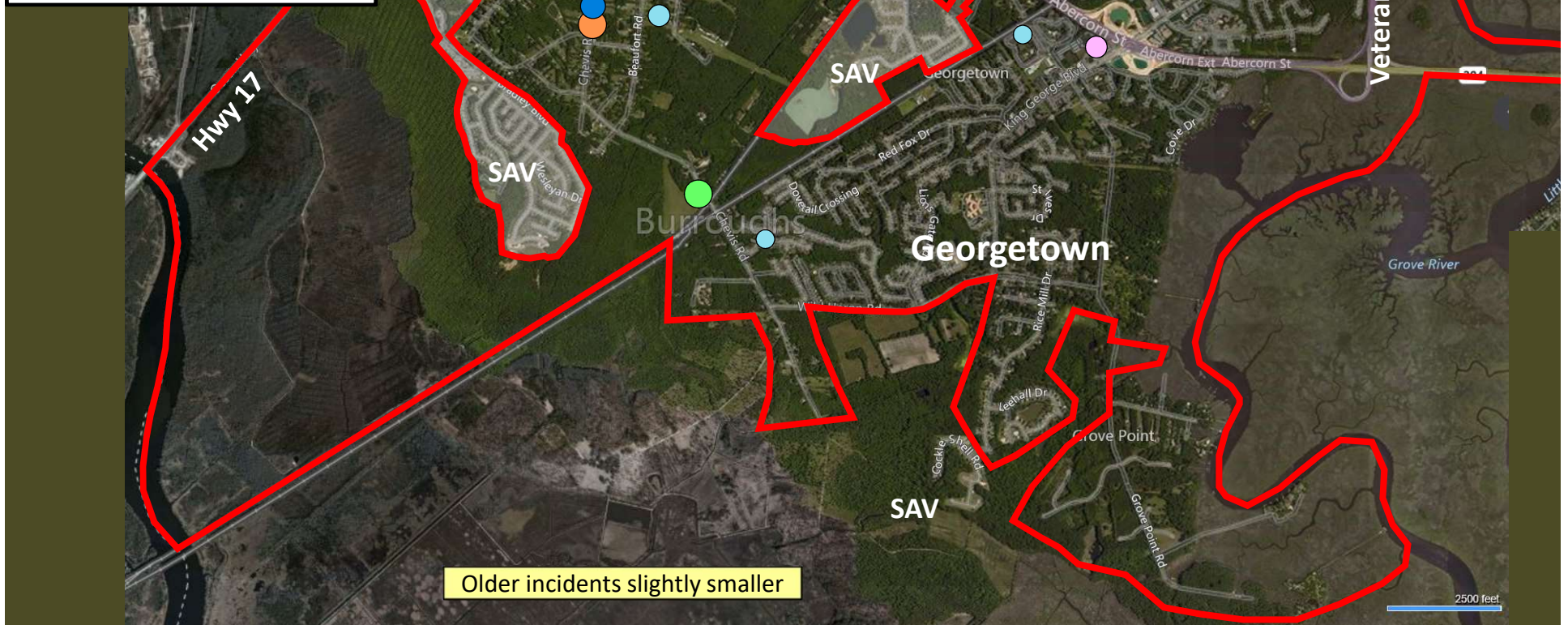
**Part I Incidents**  
**Last 28 Days**



● Robbery	0
● Aggravated Assault	0
● Rape	1
● Burglary	3
● Theft from Auto	6
● Theft from Yard	3
● Theft from Bldg	2
● Shoplifting	11
● Other Larceny	1
● Auto Theft	2
● Snatching/PickPkt	0
<b>Total</b>	<b>27</b>

## Part I Incidents Last 28 Days

## Beat 8



Older incidents slightly smaller



# Beat 9

## Part I Incidents Last 28 Days

Note: The  
Enclave  
subdivision  
is now in  
Beat 7

● Robbery	3
● Aggravated Assault	4
● Rape	1
● Burglary	3
● Theft from Auto	3
● Theft from Yard	3
● Theft from Building	6
● Shoplifting	1
● Other Larceny	4
● Auto Theft	3
● Snatching/PickPkt	0
Total	31

