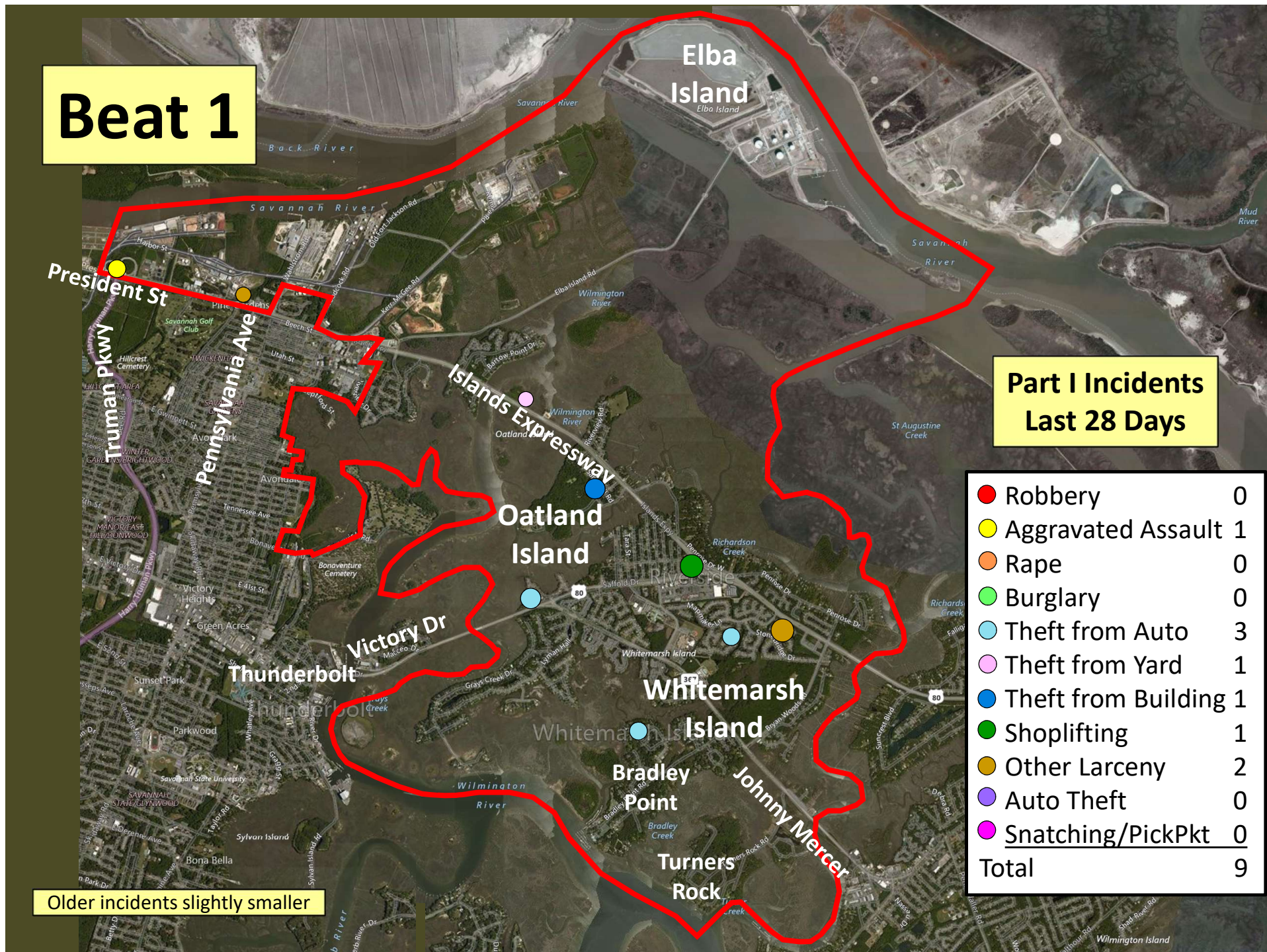


# Beat 1

## Part I Incidents Last 28 Days

● Robbery	0
● Aggravated Assault	1
● Rape	0
● Burglary	0
● Theft from Auto	3
● Theft from Yard	1
● Theft from Building	1
● Shoplifting	1
● Other Larceny	2
● Auto Theft	0
● Snatching/PickPkt	0
Total	9

Older incidents slightly smaller





# Beat 2

Part I Incidents  
Last 28 Days

Older incidents slightly smaller



Robbery	0
Aggravated Assault	0
Rape	0
Burglary	0
Theft from Auto	1
Theft from Yard	0
Theft from Building	1
Shoplifting	0
Other Larceny	1
Auto Theft	1
Snatching/PickPkt	0
Total	4



**Beat 3**

Crime Type	Count
Robbery	0
Aggravated Assault	0
Rape	1
Burglary	1
Theft from Auto	3
Theft from Yard	1
Theft from Building	2
Shoplifting	1
Other Larceny	0
Auto Theft	0
Snatching/PickPkt	0
<b>Total</b>	<b>9</b>

**Part I Incidents Last 28 Days**

- Robbery
- Aggravated Assault
- Rape
- Burglary
- Theft from Auto
- Theft from Yard
- Theft from Building
- Shoplifting
- Other Larceny
- Auto Theft
- Snatching/PickPkt

Older incidents slightly smaller

**Beat 3**

Crime Type	Count
Robbery	0
Aggravated Assault	0
Rape	1
Burglary	1
Theft from Auto	3
Theft from Yard	1
Theft from Building	2
Shoplifting	1
Other Larceny	0
Auto Theft	0
Snatching/PickPkt	0
<b>Total</b>	<b>9</b>

**Part I Incidents Last 28 Days**

- Robbery
- Aggravated Assault
- Rape
- Burglary
- Theft from Auto
- Theft from Yard
- Theft from Building
- Shoplifting
- Other Larceny
- Auto Theft
- Snatching/PickPkt

Older incidents slightly smaller

**Beat 3**

Crime Type	Count
Robbery	0
Aggravated Assault	0
Rape	1
Burglary	1
Theft from Auto	3
Theft from Yard	1
Theft from Building	2
Shoplifting	1
Other Larceny	0
Auto Theft	0
Snatching/PickPkt	0
<b>Total</b>	<b>9</b>

**Part I Incidents Last 28 Days**

- Robbery
- Aggravated Assault
- Rape
- Burglary
- Theft from Auto
- Theft from Yard
- Theft from Building
- Shoplifting
- Other Larceny
- Auto Theft
- Snatching/PickPkt

Older incidents slightly smaller

**Beat 3**

Crime Type	Count
Robbery	0
Aggravated Assault	0
Rape	1
Burglary	1
Theft from Auto	3
Theft from Yard	1
Theft from Building	2
Shoplifting	1
Other Larceny	0
Auto Theft	0
Snatching/PickPkt	0
<b>Total</b>	<b>9</b>

**Part I Incidents Last 28 Days**

- Robbery
- Aggravated Assault
- Rape
- Burglary
- Theft from Auto
- Theft from Yard
- Theft from Building
- Shoplifting
- Other Larceny
- Auto Theft
- Snatching/PickPkt

Older incidents slightly smaller

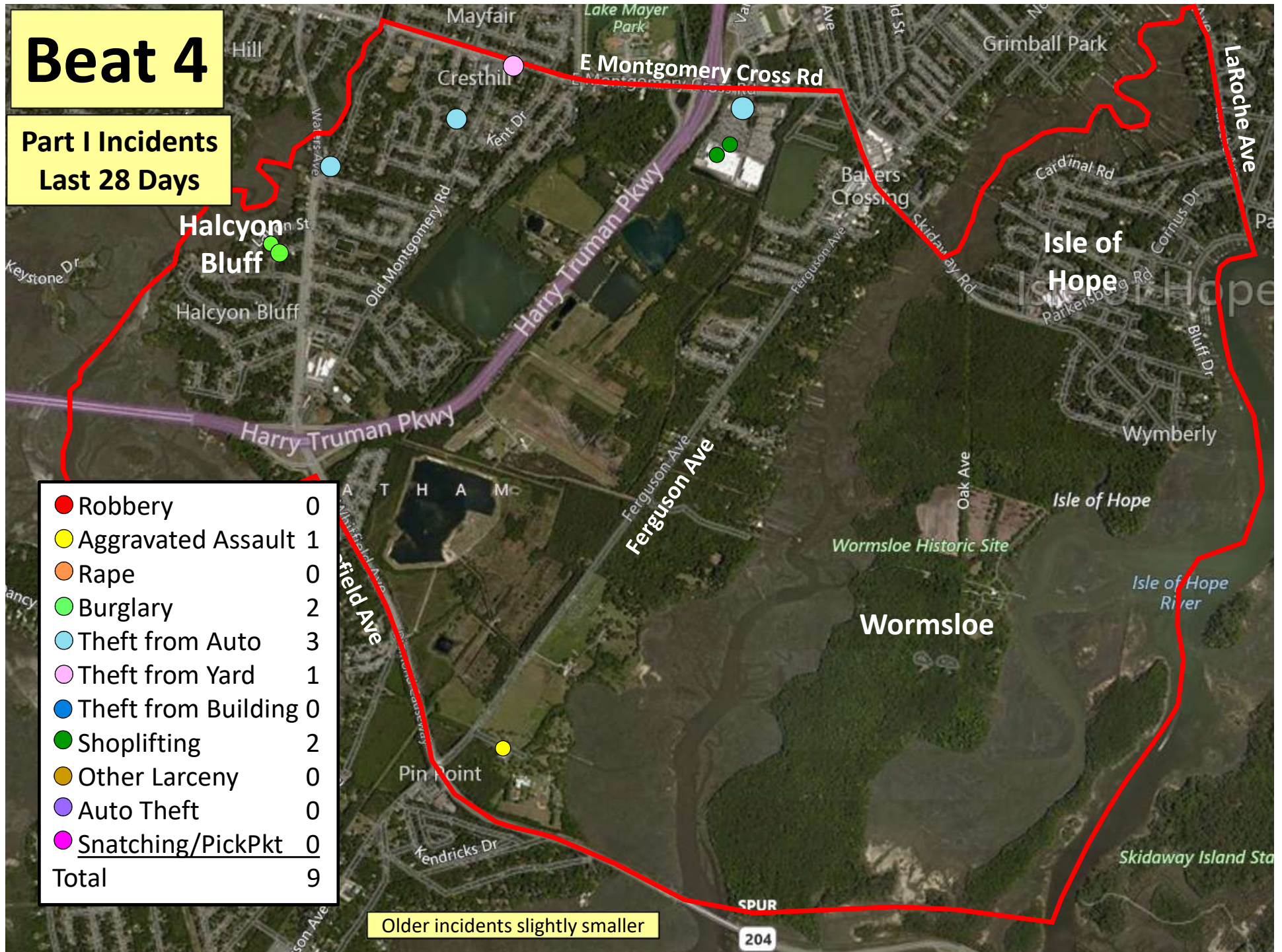


# Beat 4

Part I Incidents  
Last 28 Days

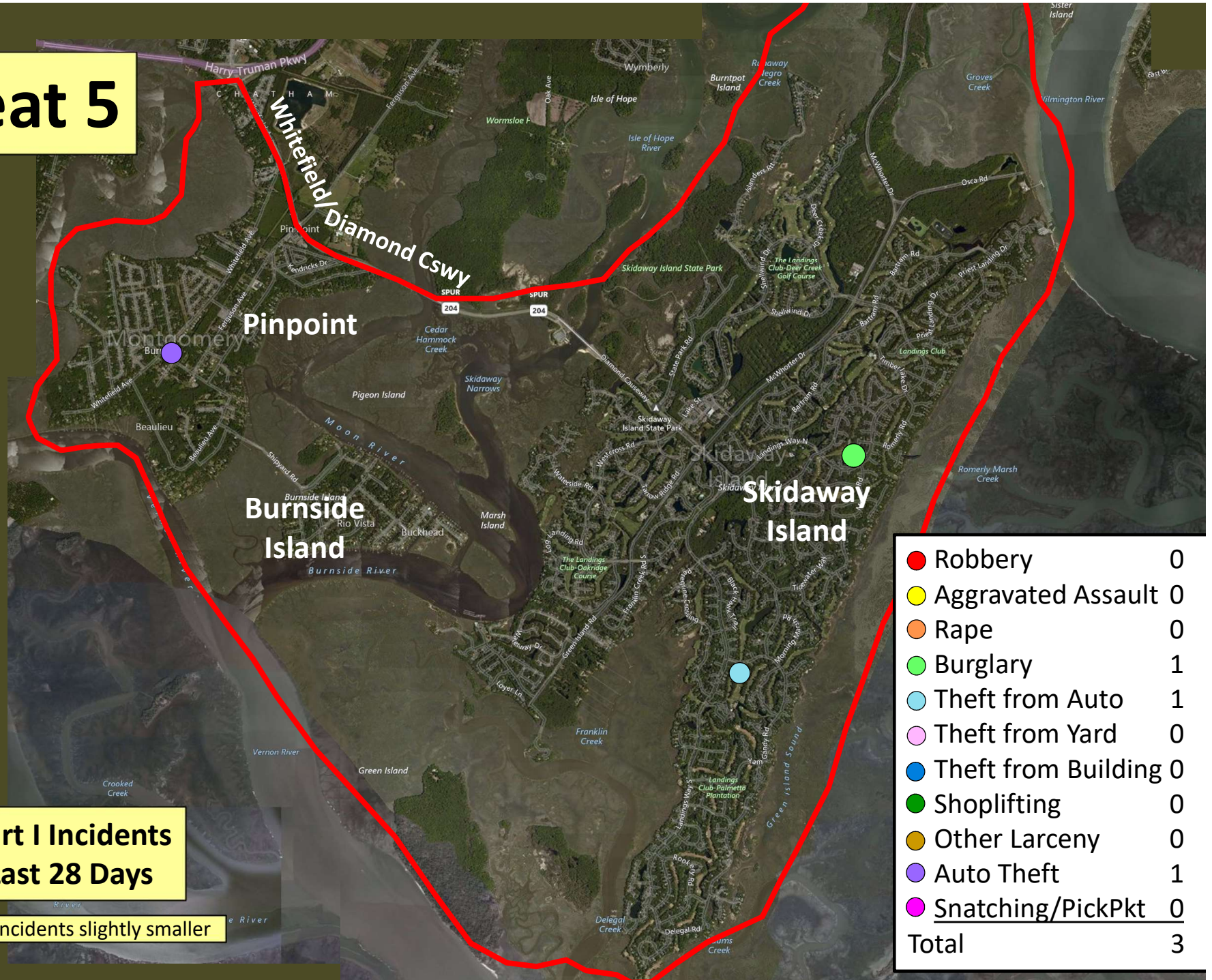
● Robbery	0
● Aggravated Assault	1
● Rape	0
● Burglary	2
● Theft from Auto	3
● Theft from Yard	1
● Theft from Building	0
● Shoplifting	2
● Other Larceny	0
● Auto Theft	0
● Snatching/PickPkt	0
Total	9

Older incidents slightly smaller





# Beat 5



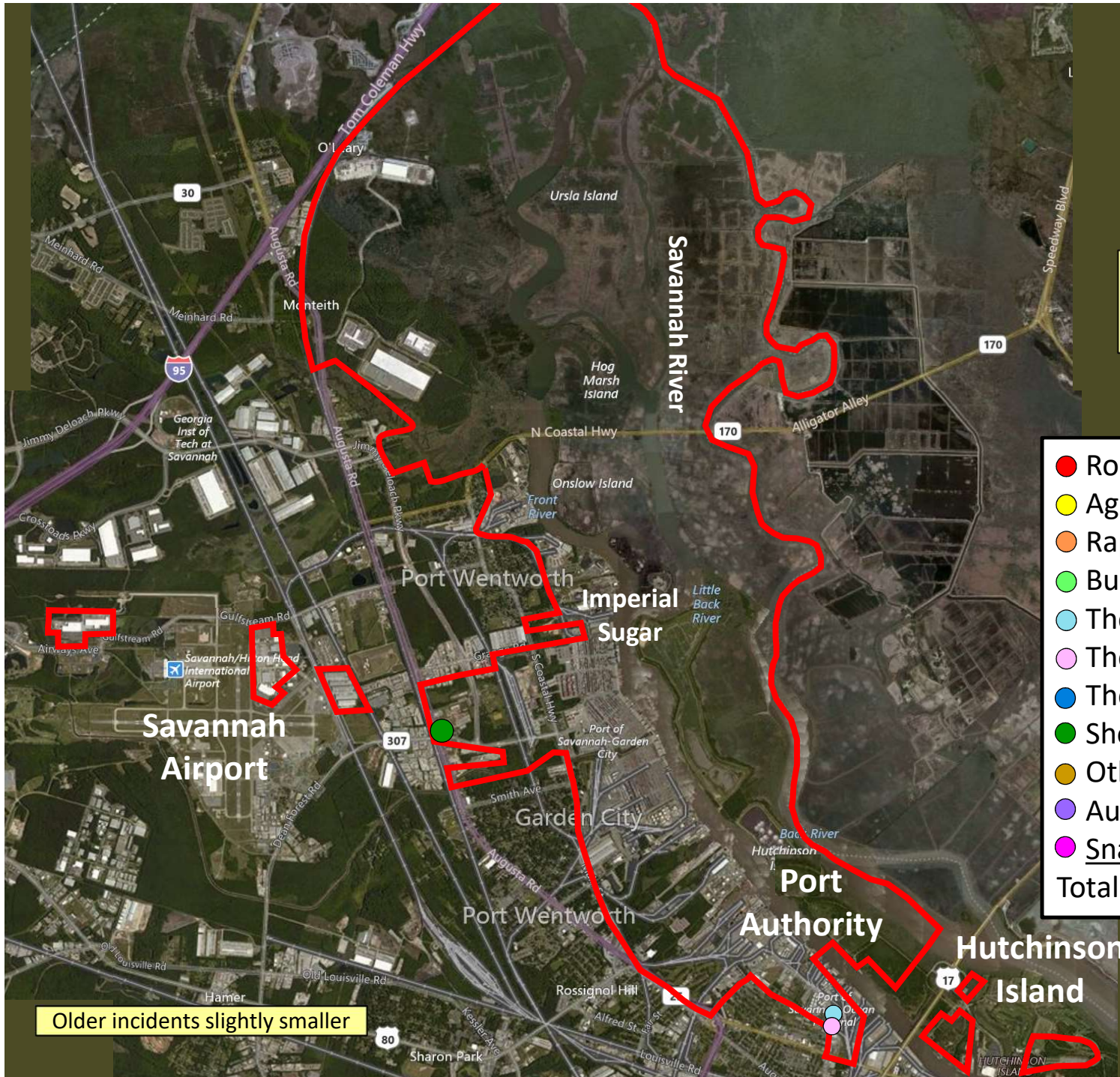


# Beat 6

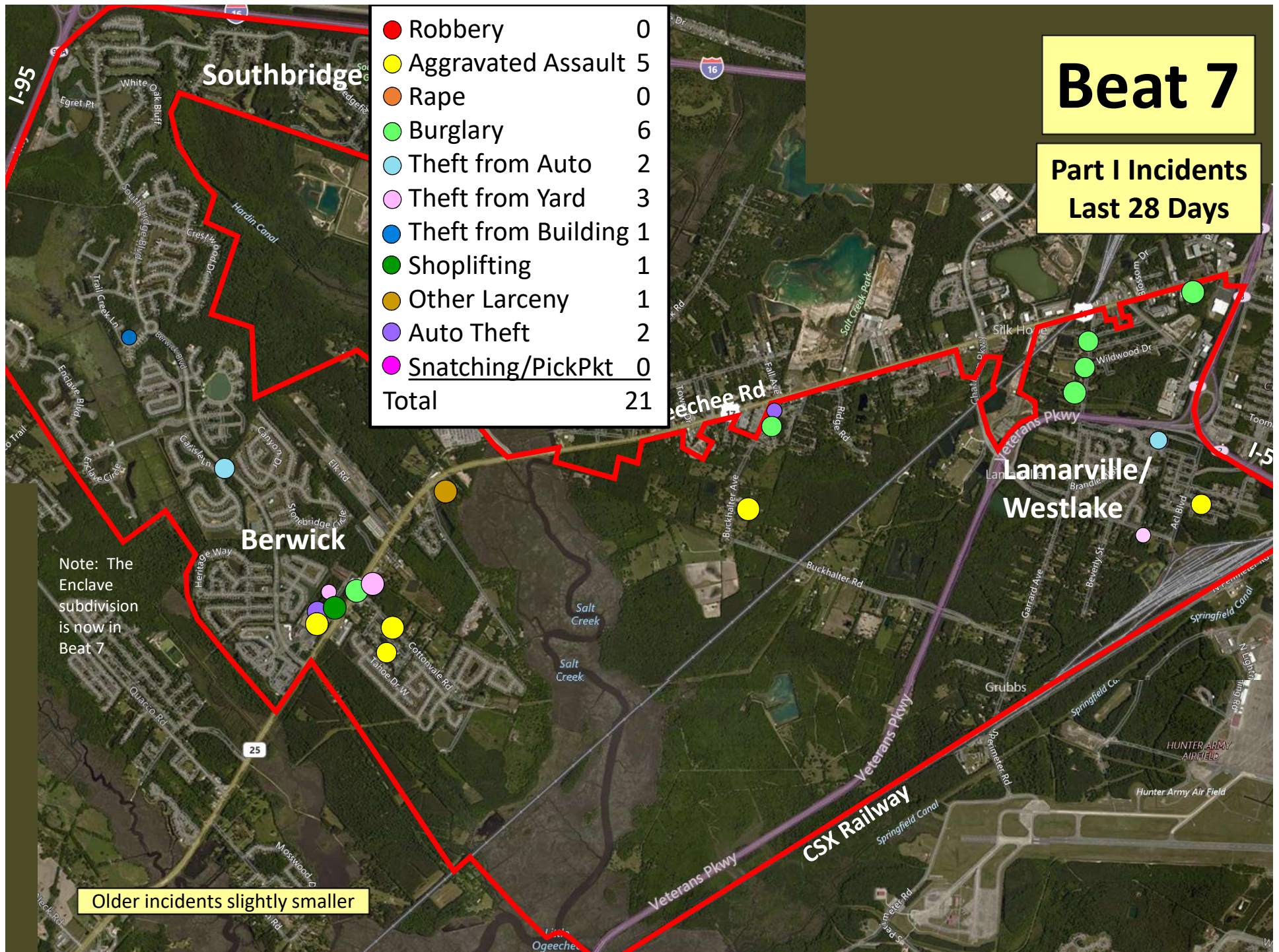
Part I Incidents  
Last 28 Days

● Robbery	0
● Aggravated Assault	0
● Rape	0
● Burglary	0
● Theft from Auto	1
● Theft from Yard	1
● Theft from Building	0
● Shoplifting	1
● Other Larceny	0
● Auto Theft	0
● Snatching/PickPkt	0
Total	3

Older incidents slightly smaller









Part I Incidents  
Last 28 Days

Beat 8

● Robbery	0
● Aggravated Assault	3
● Rape	1
● Burglary	2
● Theft from Auto	5
● Theft from Yard	2
● Theft from Bldg	0
● Shoplifting	17
● Other Larceny	3
● Auto Theft	2
● Snatching/PickPkt	0
Total	35



Older incidents slightly smaller



# Beat 9

## Part I Incidents Last 28 Days

Note: The  
Enclave  
subdivision  
is now in  
Beat 7

● Robbery	0
● Aggravated Assault	3
● Rape	1
● Burglary	3
● Theft from Auto	9
● Theft from Yard	0
● Theft from Building	1
● Shoplifting	3
● Other Larceny	0
● Auto Theft	0
● Snatching/PickPkt	0
Total	20

