

Beat 1

Part I Incidents Last 28 Days

| | |
|-----------------------|----|
| ● Robbery | 0 |
| ● Aggravated Assault | 1 |
| ● Rape | 0 |
| ● Burglary | 4 |
| ● Theft from Auto | 3 |
| ● Theft from Yard | 2 |
| ● Theft from Building | 0 |
| ● Shoplifting | 0 |
| ● Other Larceny | 0 |
| ● Auto Theft | 0 |
| ● Snatching/PickPkt | 0 |
| Total | 10 |

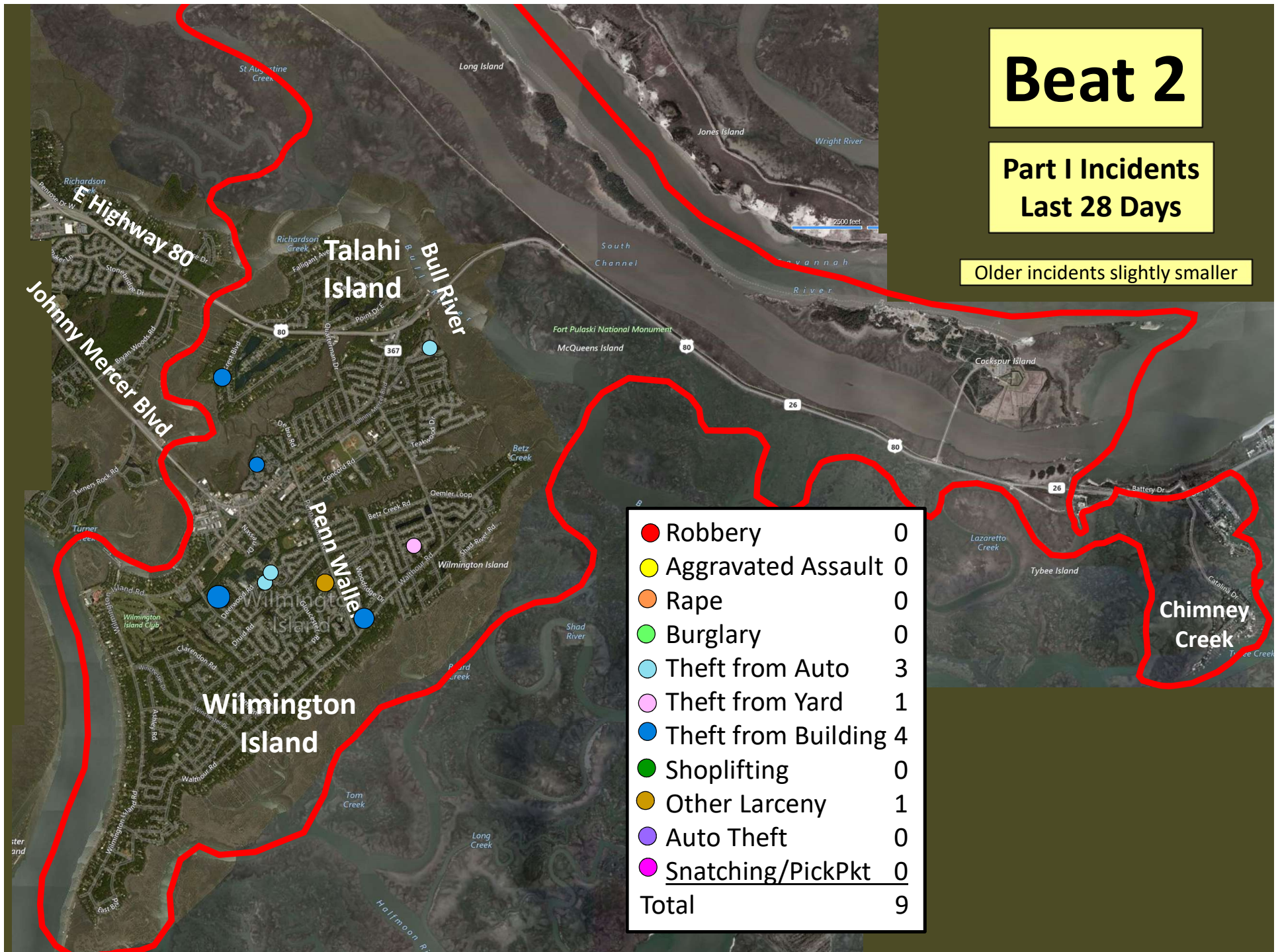
Older incidents slightly smaller

Beat 2

Part I Incidents
Last 28 Days

Older incidents slightly smaller

| | |
|---------------------|---|
| Robbery | 0 |
| Aggravated Assault | 0 |
| Rape | 0 |
| Burglary | 0 |
| Theft from Auto | 3 |
| Theft from Yard | 1 |
| Theft from Building | 4 |
| Shoplifting | 0 |
| Other Larceny | 1 |
| Auto Theft | 0 |
| Snatching/PickPkt | 0 |
| Total | 9 |

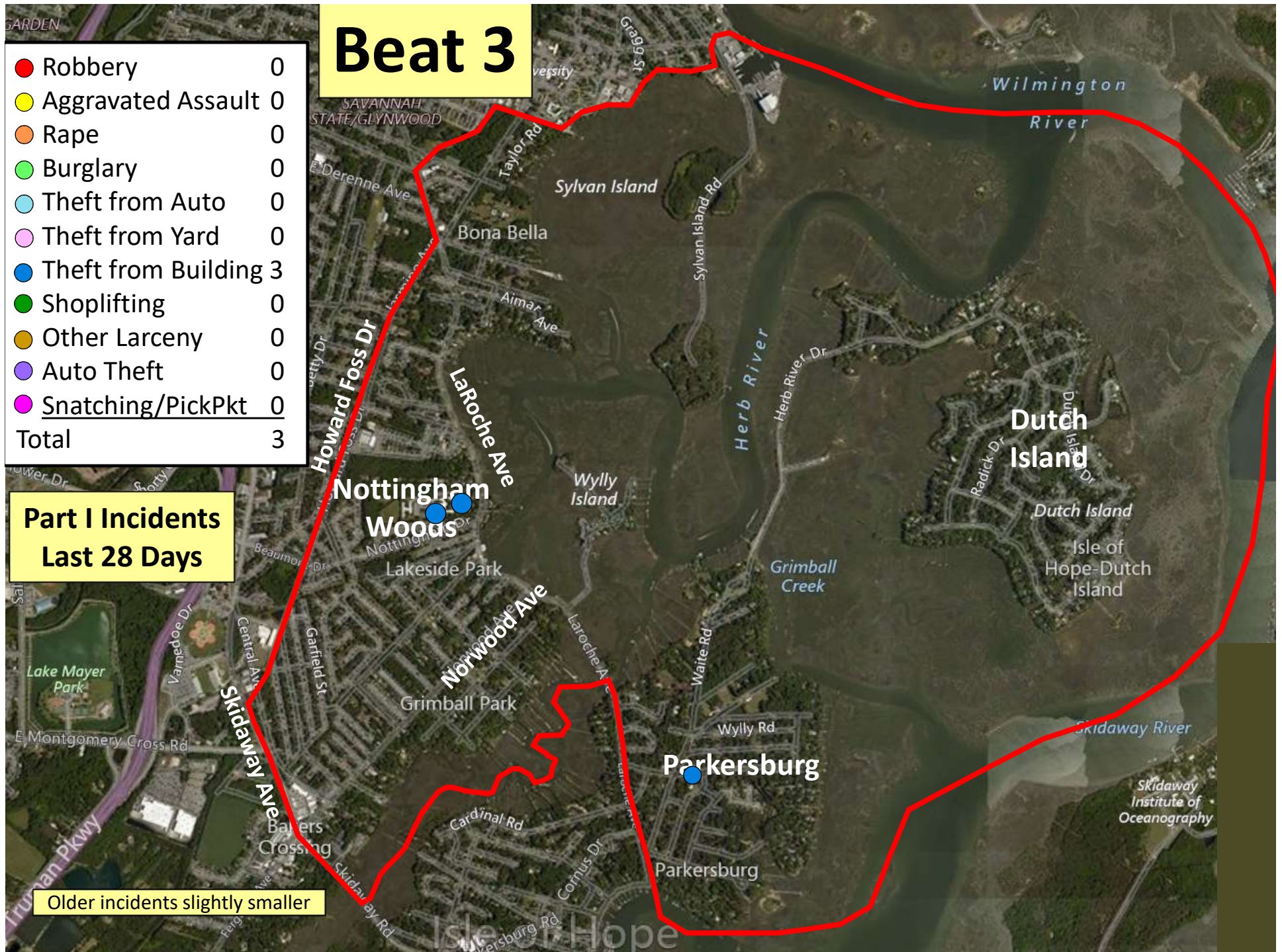


Beat 3

| | |
|-----------------------|---|
| ● Robbery | 0 |
| ● Aggravated Assault | 0 |
| ● Rape | 0 |
| ● Burglary | 0 |
| ● Theft from Auto | 0 |
| ● Theft from Yard | 0 |
| ● Theft from Building | 3 |
| ● Shoplifting | 0 |
| ● Other Larceny | 0 |
| ● Auto Theft | 0 |
| ● Snatching/PickPkt | 0 |
| Total | 3 |

Part I Incidents Last 28 Days

Older incidents slightly smaller

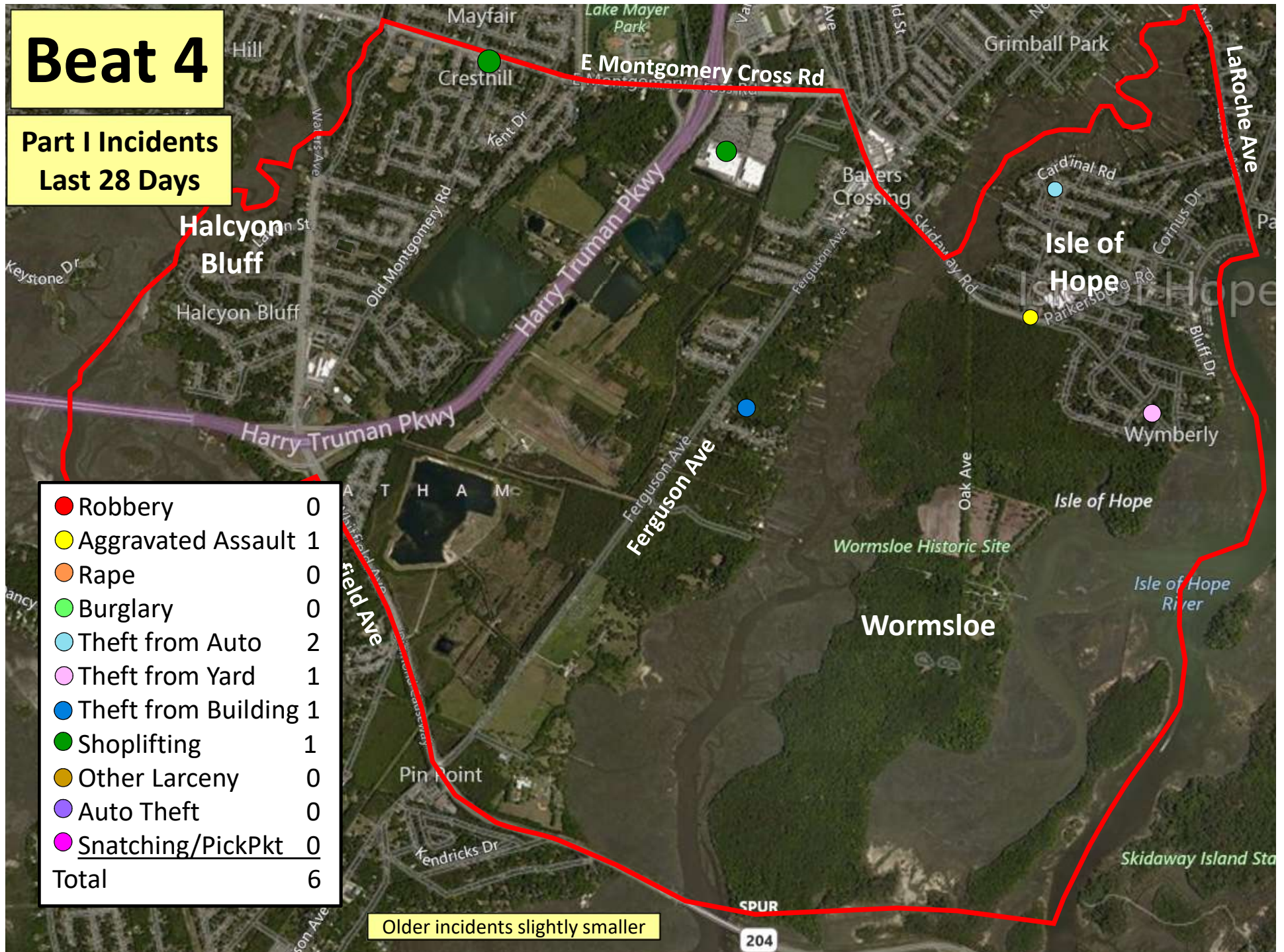


Beat 4

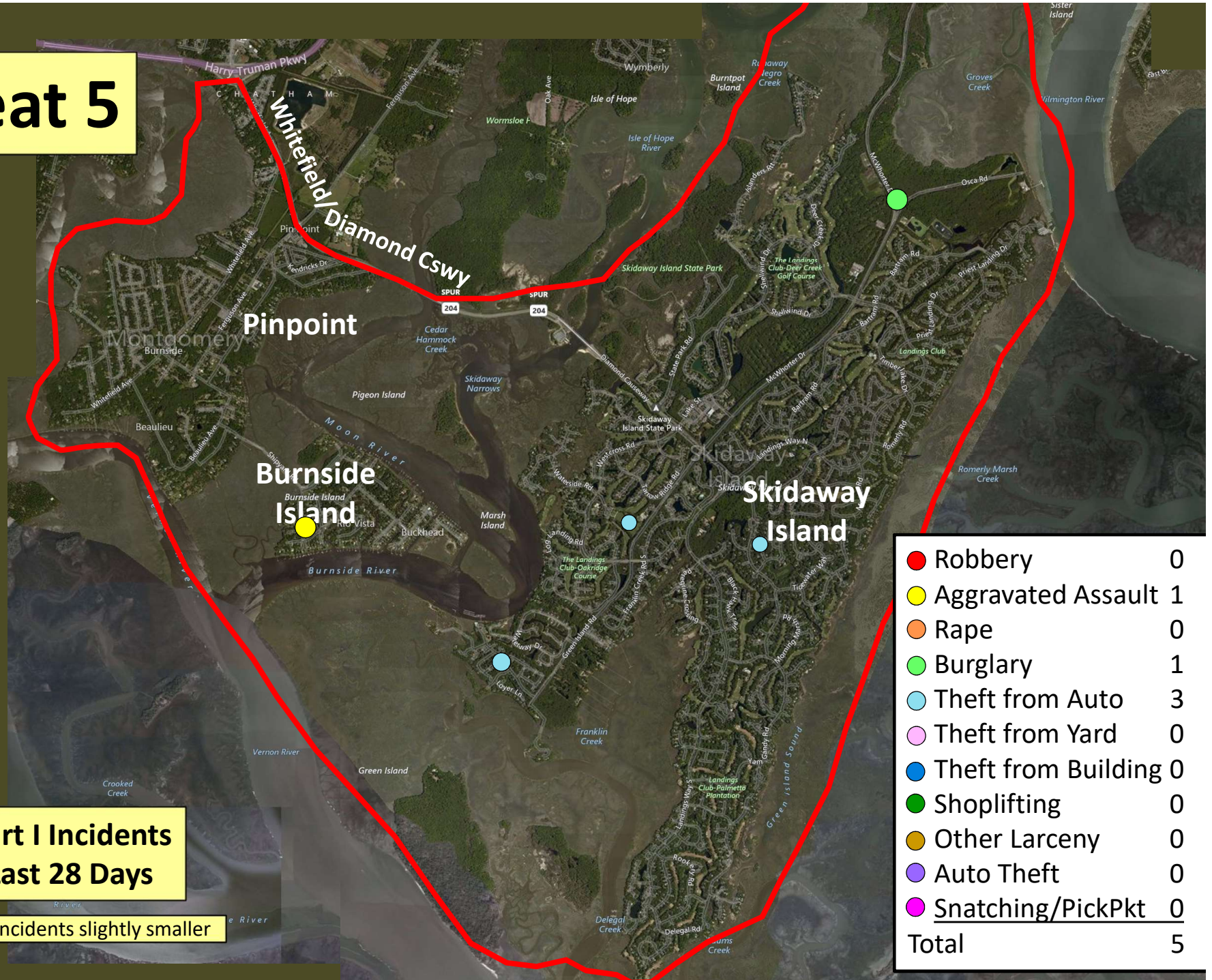
Part I Incidents Last 28 Days

| | |
|-----------------------|---|
| ● Robbery | 0 |
| ● Aggravated Assault | 1 |
| ● Rape | 0 |
| ● Burglary | 0 |
| ● Theft from Auto | 2 |
| ● Theft from Yard | 1 |
| ● Theft from Building | 1 |
| ● Shoplifting | 1 |
| ● Other Larceny | 0 |
| ● Auto Theft | 0 |
| ● Snatching/PickPkt | 0 |
| Total | 6 |

Older incidents slightly smaller



Beat 5



Part I Incidents
Last 28 Days

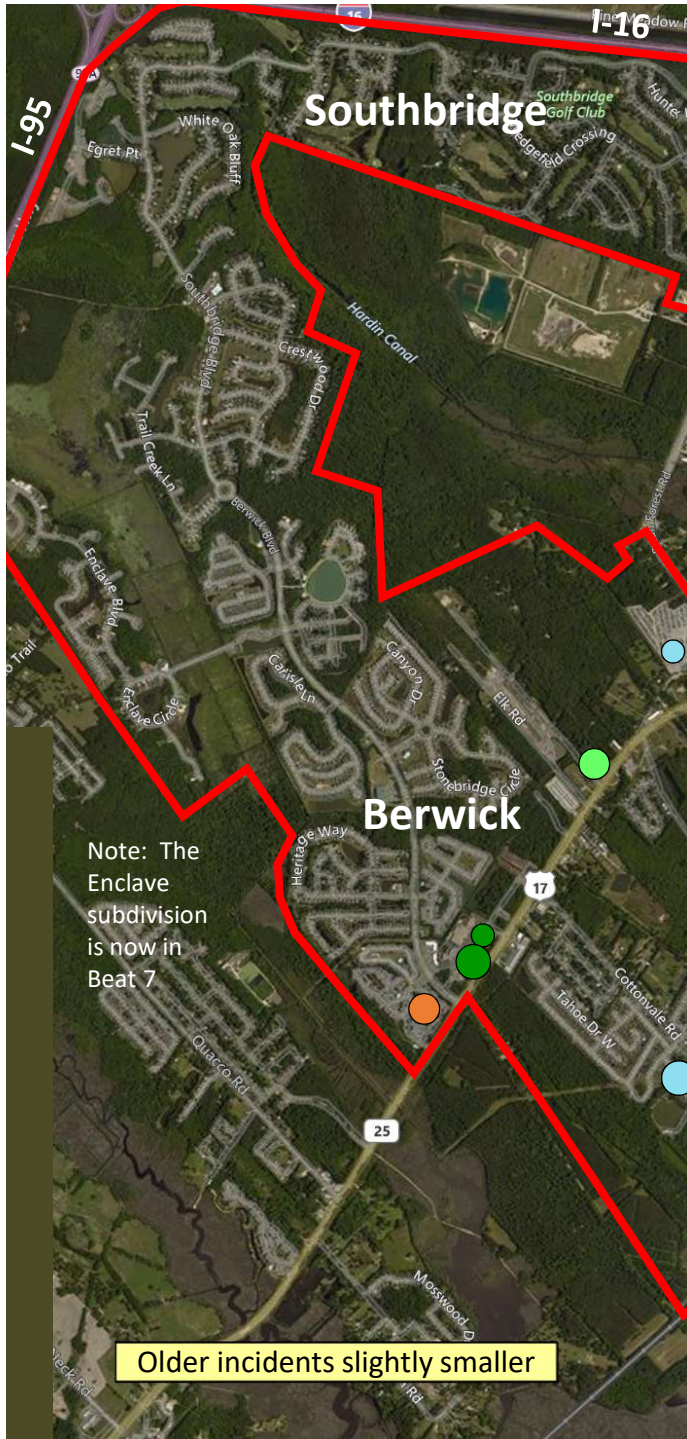
Older incidents slightly smaller

Beat 6

Part I Incidents
Last 28 Days

| | |
|-----------------------|---|
| ● Robbery | 0 |
| ● Aggravated Assault | 0 |
| ● Rape | 0 |
| ● Burglary | 0 |
| ● Theft from Auto | 0 |
| ● Theft from Yard | 0 |
| ● Theft from Building | 0 |
| ● Shoplifting | 0 |
| ● Other Larceny | 0 |
| ● Auto Theft | 0 |
| ● Snatching/PickPkt | 0 |
| Total | 0 |

Older incidents slightly smaller



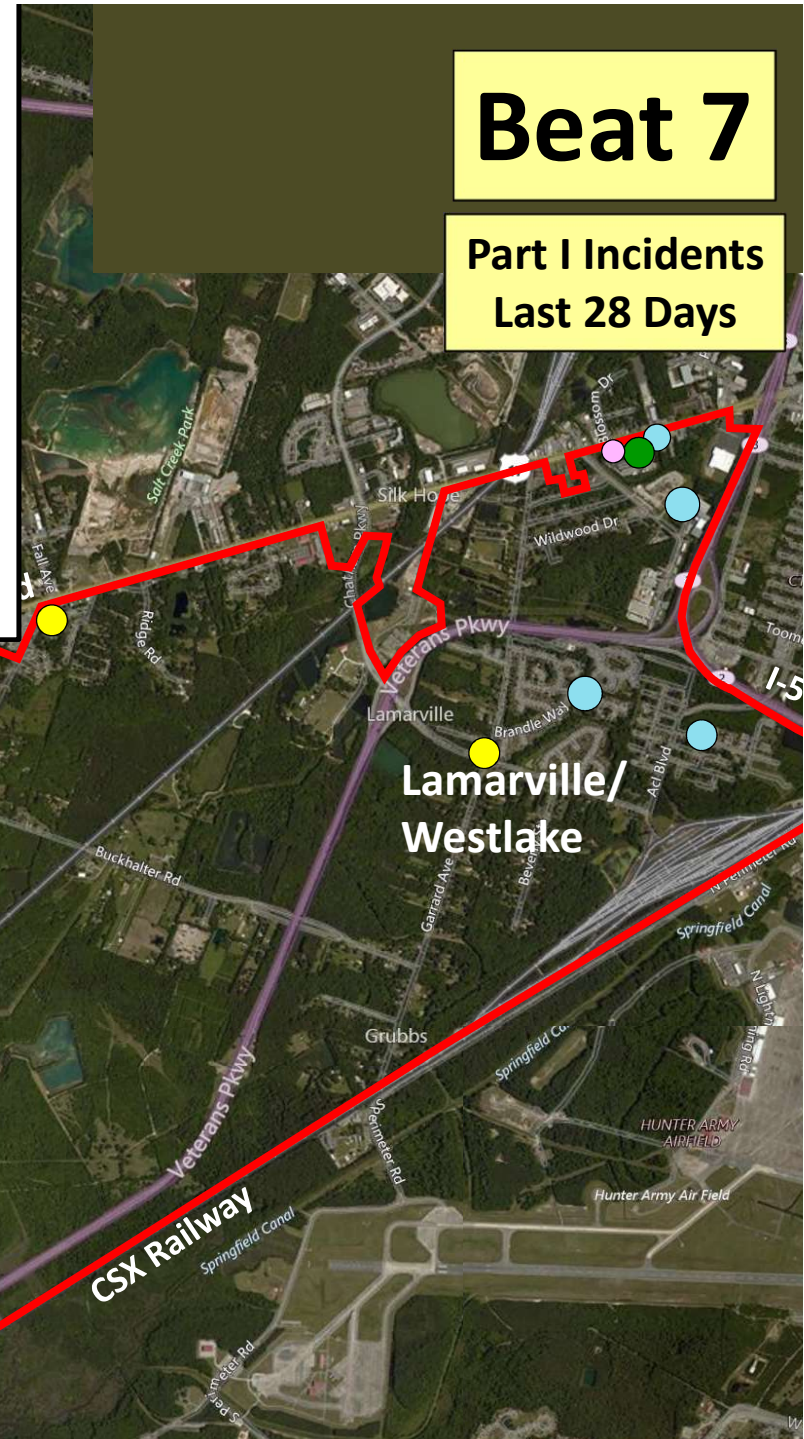
| | |
|-----------------------|----|
| ● Robbery | 0 |
| ● Aggravated Assault | 2 |
| ● Rape | 1 |
| ● Burglary | 1 |
| ● Theft from Auto | 6 |
| ● Theft from Yard | 1 |
| ● Theft from Building | 0 |
| ● Shoplifting | 3 |
| ● Other Larceny | 1 |
| ● Auto Theft | 0 |
| ● Snatching/PickPkt | 0 |
| Total | 15 |

Note: The Enclave subdivision is now in Beat 7

Older incidents slightly smaller

Beat 7

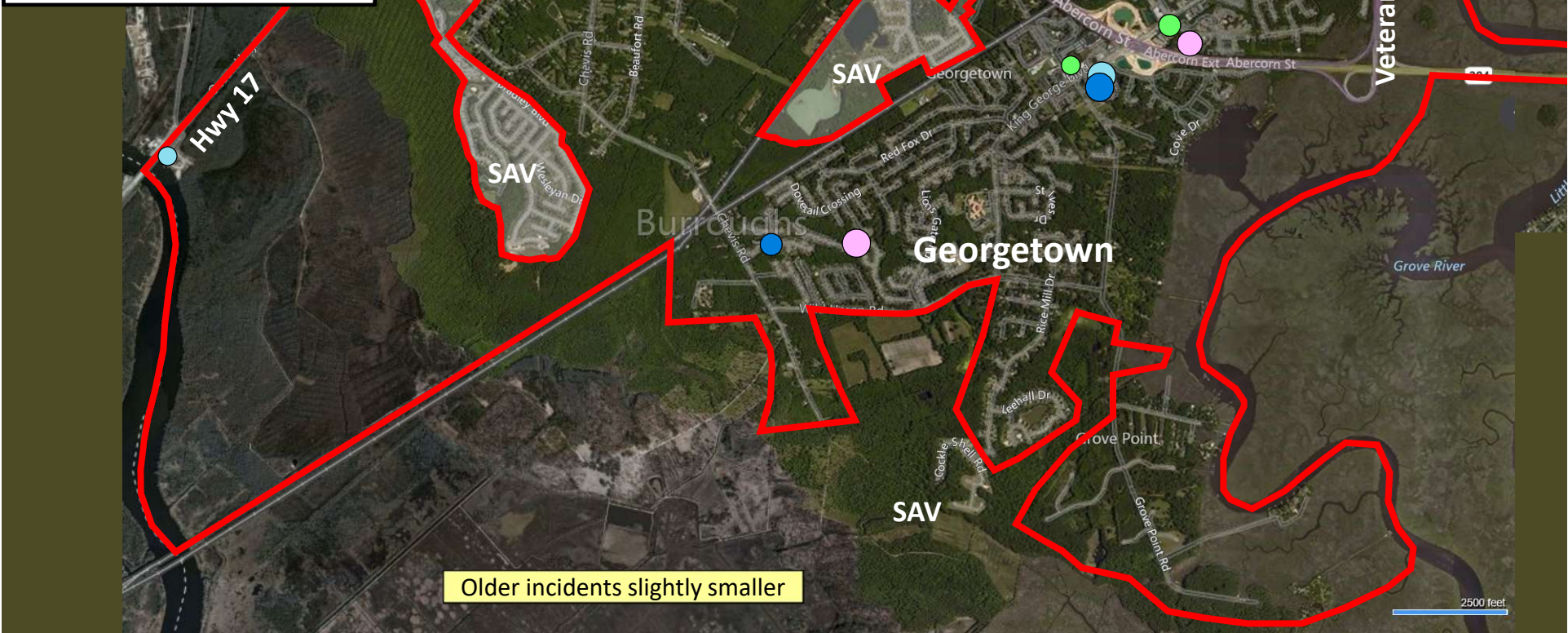
Part I Incidents
Last 28 Days



Part I Incidents
Last 28 Days

Beat 8

| | |
|----------------------|----|
| ● Robbery | 0 |
| ● Aggravated Assault | 0 |
| ● Rape | 1 |
| ● Burglary | 5 |
| ● Theft from Auto | 3 |
| ● Theft from Yard | 3 |
| ● Theft from Bldg | 2 |
| ● Shoplifting | 11 |
| ● Other Larceny | 0 |
| ● Auto Theft | 2 |
| ● Snatching/PickPkt | 0 |
| Total | 27 |



Older incidents slightly smaller

Beat 9

Part I Incidents Last 28 Days

Note: The
Enclave
subdivision
is now in
Beat 7

| | |
|-----------------------|----|
| ● Robbery | 0 |
| ● Aggravated Assault | 4 |
| ● Rape | 2 |
| ● Burglary | 2 |
| ● Theft from Auto | 7 |
| ● Theft from Yard | 2 |
| ● Theft from Building | 6 |
| ● Shoplifting | 3 |
| ● Other Larceny | 0 |
| ● Auto Theft | 3 |
| ● Snatching/PickPkt | 1 |
| Total | 30 |

