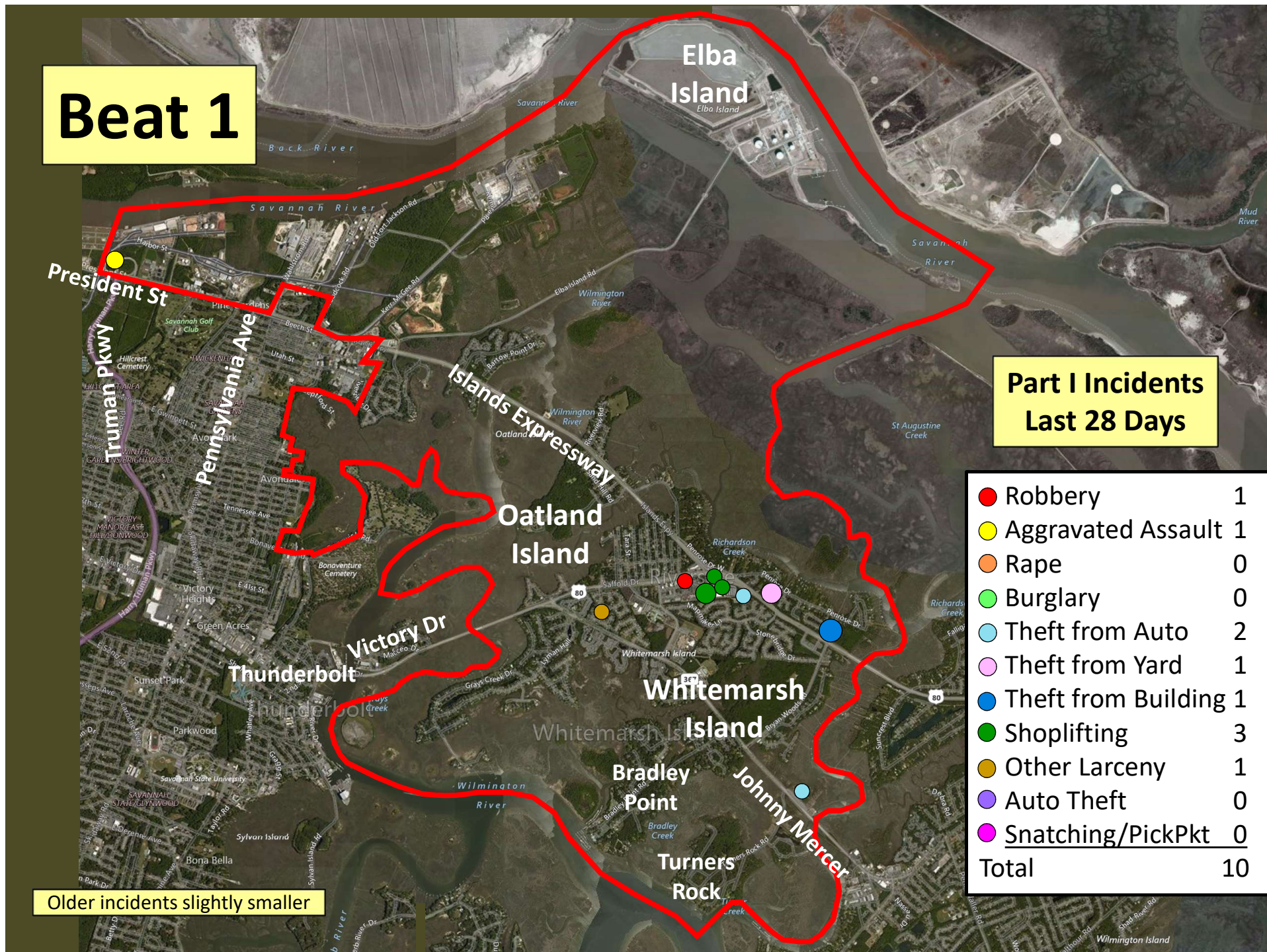


Beat 1

Part I Incidents Last 28 Days

● Robbery	1
● Aggravated Assault	1
● Rape	0
● Burglary	0
● Theft from Auto	2
● Theft from Yard	1
● Theft from Building	1
● Shoplifting	3
● Other Larceny	1
● Auto Theft	0
● Snatching/PickPkt	0
Total	10

Older incidents slightly smaller



Beat 2

Part I Incidents Last 28 Days

Older incidents slightly smaller

● Homicide	1
● Robbery	0
● Aggravated Assault	1
● Rape	0
● Burglary	1
● Theft from Auto	4
● Theft from Yard	3
● Theft from Building	0
● Shoplifting	0
● Other Larceny	0
● Auto Theft	0
● Snatching/PickPkt	0
Total	10

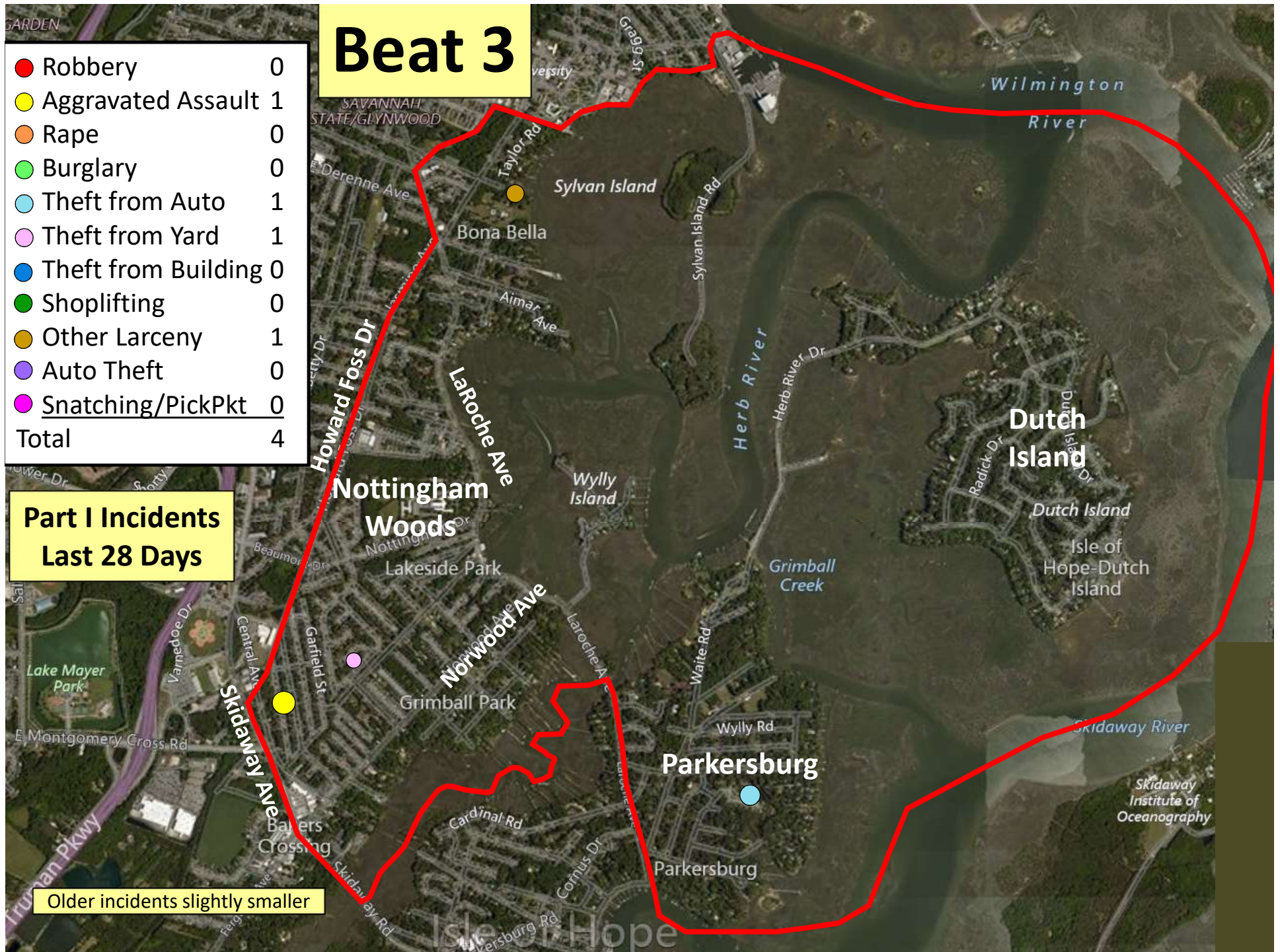
Homicide is from an assault that occurred on 12/31/19 and was not ruled a homicide until 2020 and was previously uncounted in the stats.

Beat 3

● Robbery	0
● Aggravated Assault	1
● Rape	0
● Burglary	0
● Theft from Auto	1
● Theft from Yard	1
● Theft from Building	0
● Shoplifting	0
● Other Larceny	1
● Auto Theft	0
● Snatching/PickPkt	0
Total	4

Part I Incidents Last 28 Days

Older incidents slightly smaller

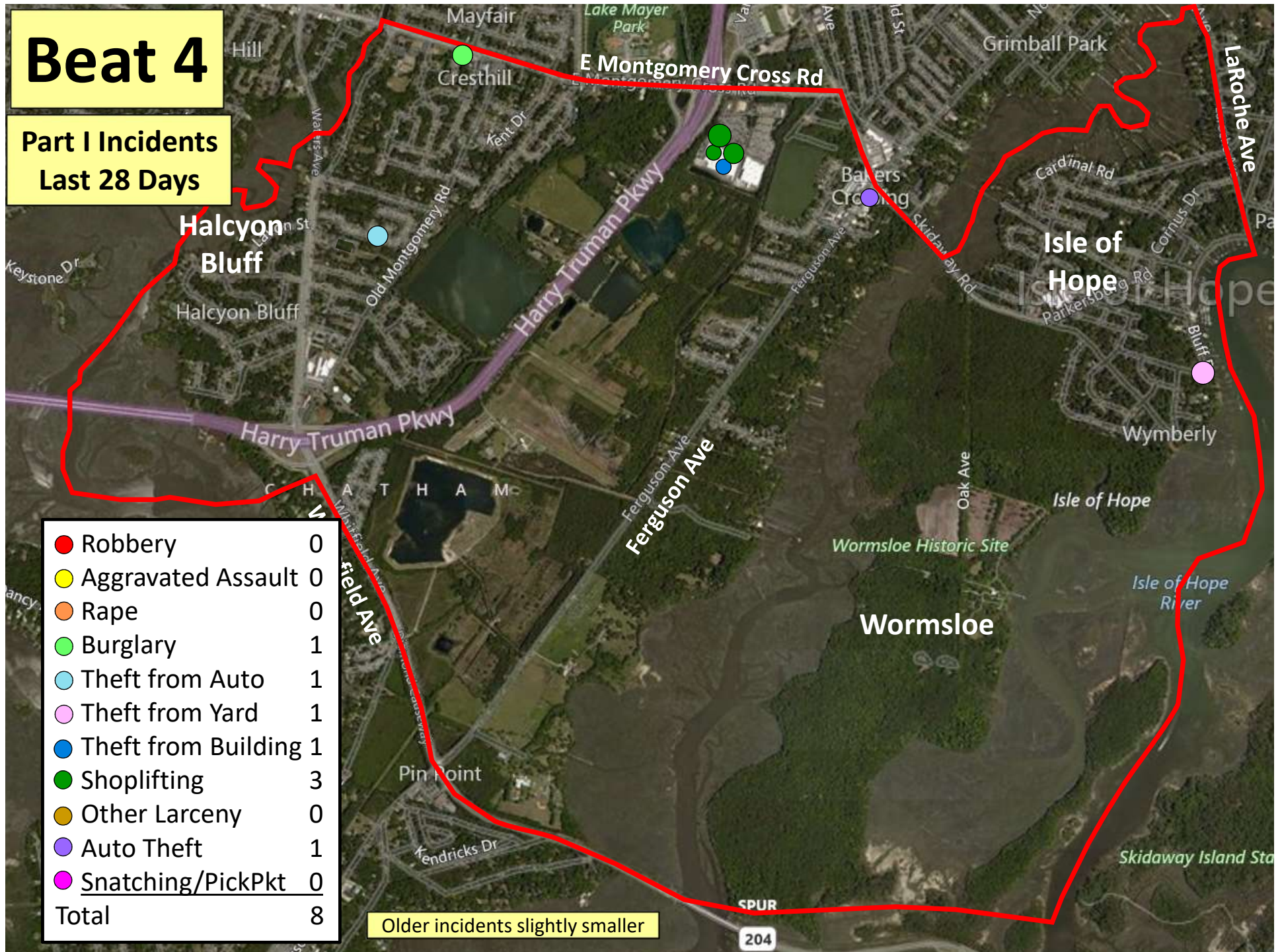


Beat 4

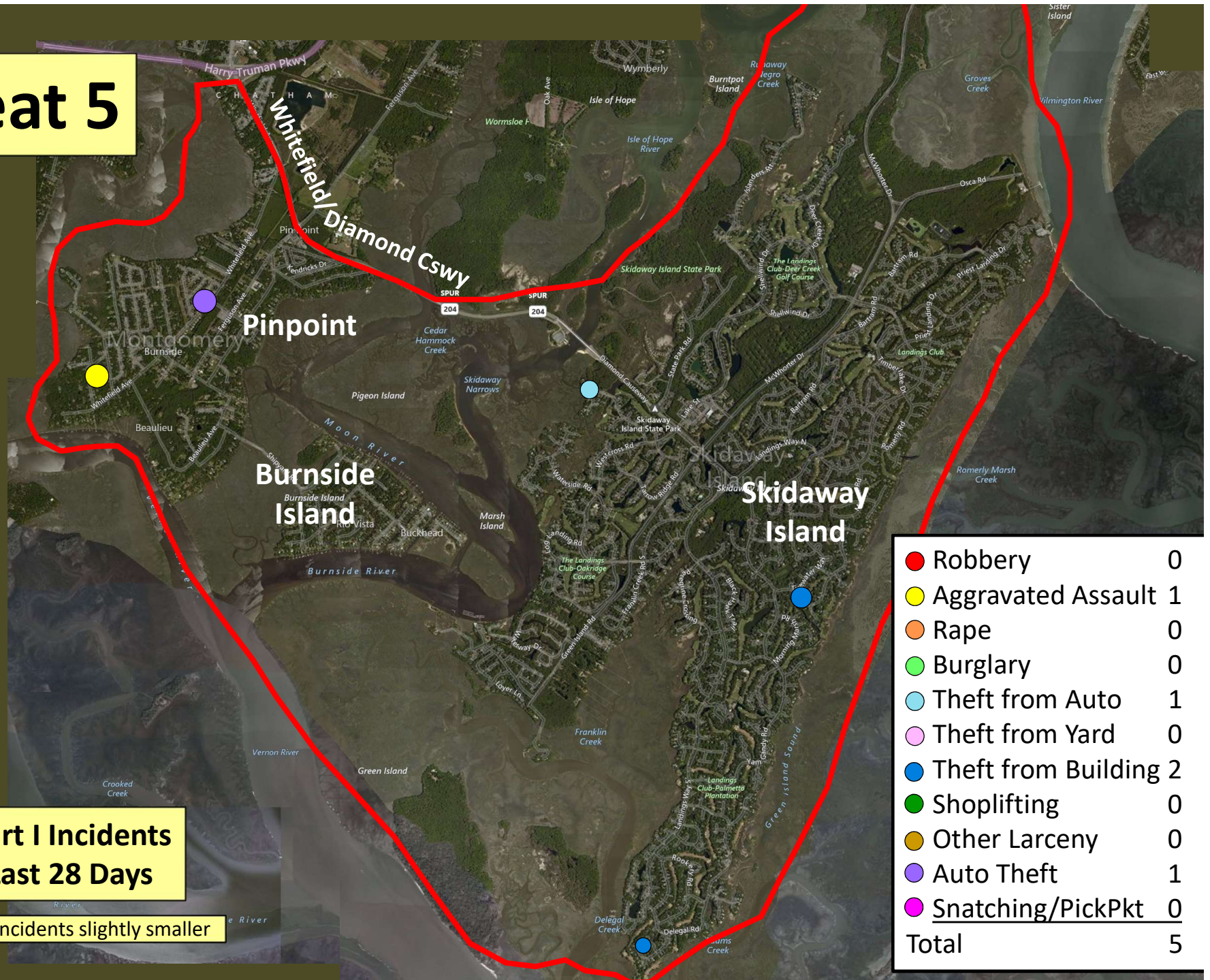
Part I Incidents Last 28 Days

● Robbery	0
● Aggravated Assault	0
● Rape	0
● Burglary	1
● Theft from Auto	1
● Theft from Yard	1
● Theft from Building	1
● Shoplifting	3
● Other Larceny	0
● Auto Theft	1
● Snatching/PickPkt	0
Total	8

Older incidents slightly smaller



Beat 5



**Part I Incidents
Last 28 Days**

Older incidents slightly smaller

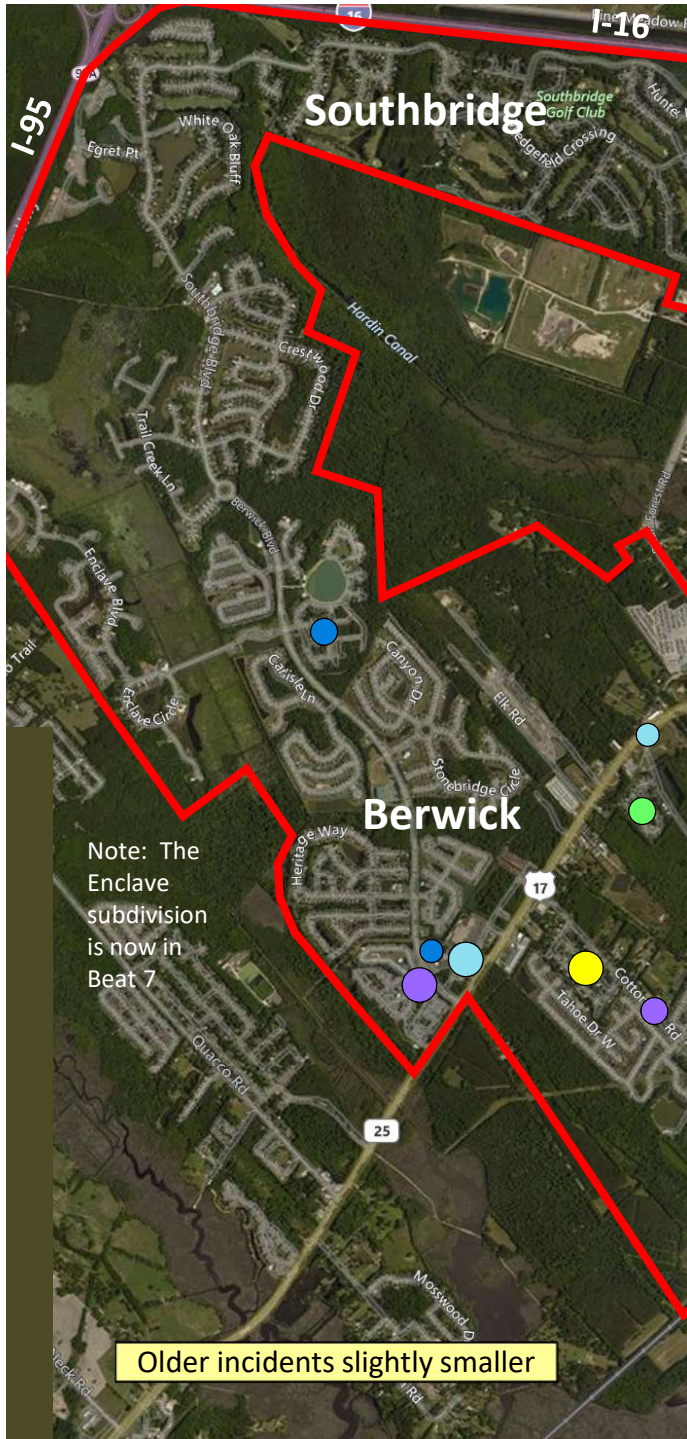
● Robbery	0
● Aggravated Assault	1
● Rape	0
● Burglary	0
● Theft from Auto	1
● Theft from Yard	0
● Theft from Building	2
● Shoplifting	0
● Other Larceny	0
● Auto Theft	1
● Snatching/PickPkt	0
Total	5

Beat 6

Part I Incidents
Last 28 Days

● Robbery	0
● Aggravated Assault	0
● Rape	0
● Burglary	0
● Theft from Auto	0
● Theft from Yard	0
● Theft from Building	0
● Shoplifting	0
● Other Larceny	1
● Auto Theft	1
● Snatching/PickPkt	0
Total	2

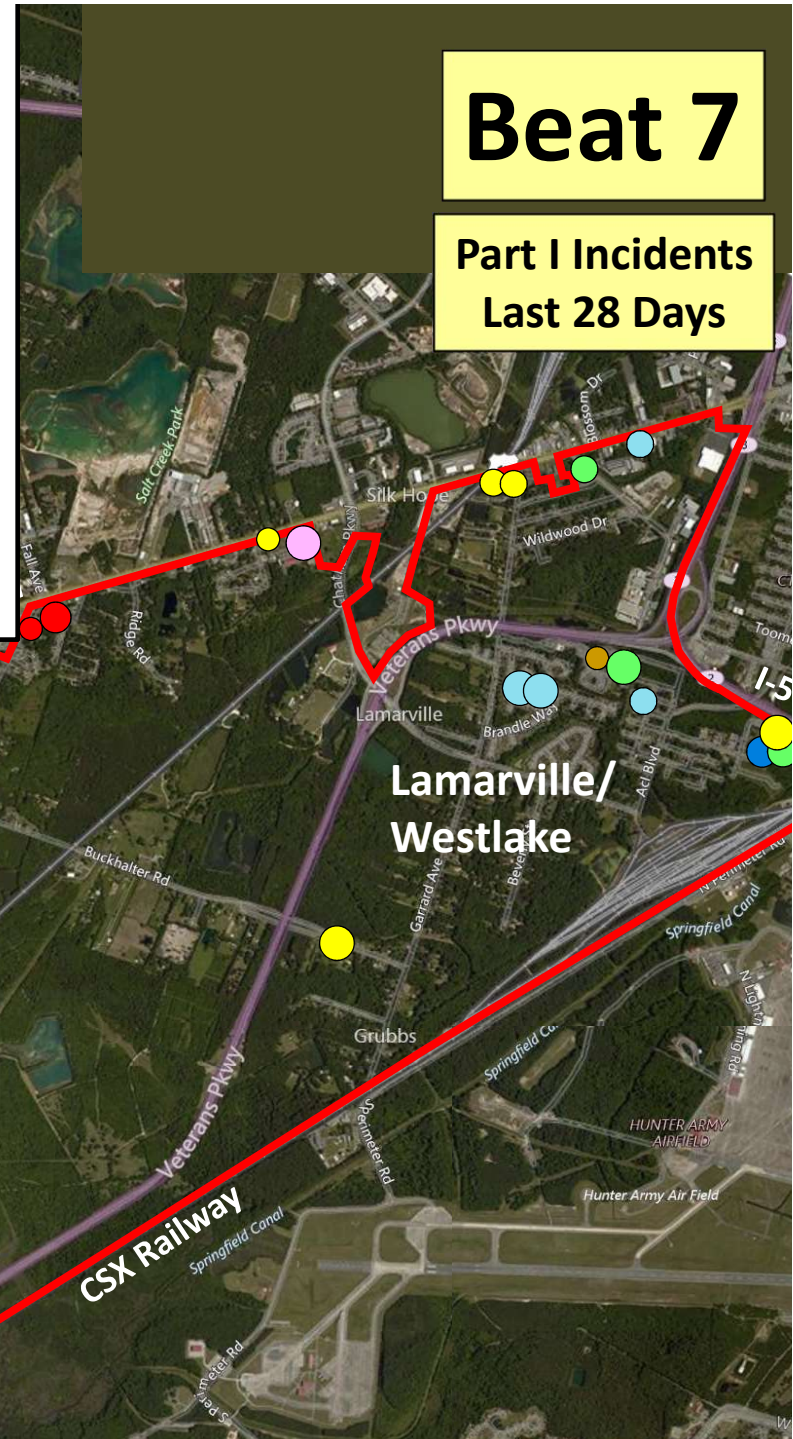
Older incidents slightly smaller



● Robbery	2
● Aggravated Assault	6
● Rape	0
● Burglary	4
● Theft from Auto	6
● Theft from Yard	1
● Theft from Building	3
● Shoplifting	0
● Other Larceny	1
● Auto Theft	2
● Snatching/PickPkt	0
Total	25

Beat 7

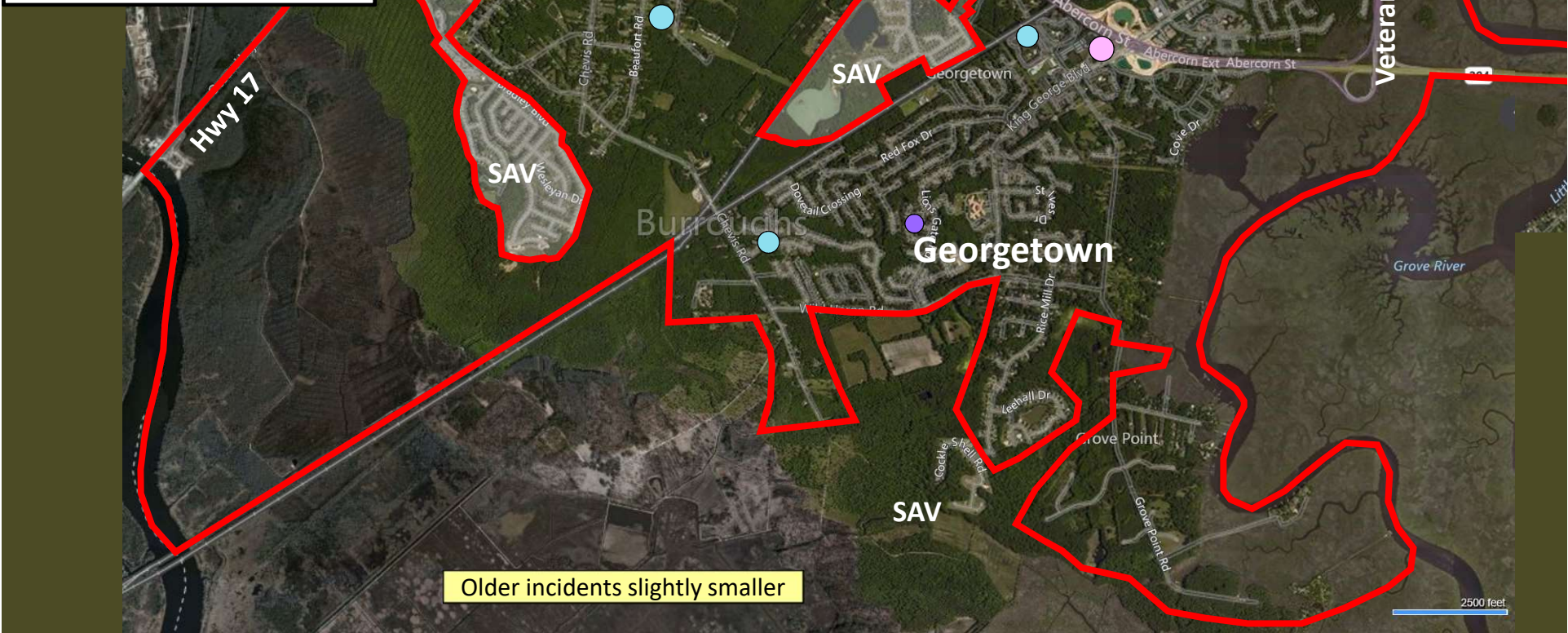
Part I Incidents
Last 28 Days



Part I Incidents
Last 28 Days

Beat 8

● Robbery	0
● Aggravated Assault	0
● Rape	0
● Burglary	2
● Theft from Auto	5
● Theft from Yard	3
● Theft from Bldg	1
● Shoplifting	9
● Other Larceny	0
● Auto Theft	2
● Snatching/PickPkt	0
Total	22



Older incidents slightly smaller

Beat 9

Part I Incidents Last 28 Days

Note: The
Enclave
subdivision
is now in
Beat 7

● Robbery	1
● Aggravated Assault	4
● Rape	1
● Burglary	2
● Theft from Auto	5
● Theft from Yard	3
● Theft from Building	5
● Shoplifting	1
● Other Larceny	5
● Auto Theft	3
● Snatching/PickPkt	0
Total	30

