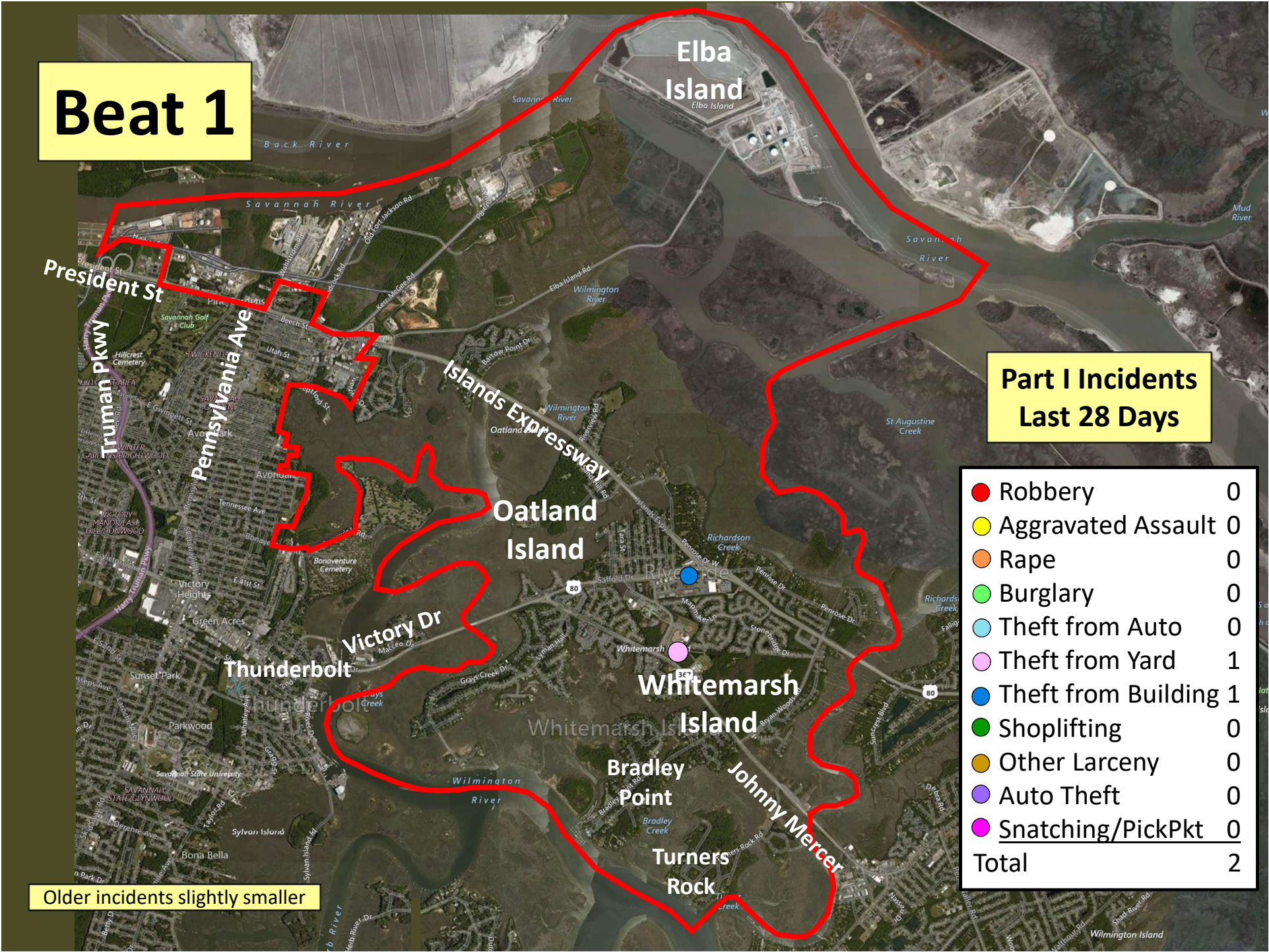


# Beat 1

## Part I Incidents Last 28 Days

● Robbery	0
● Aggravated Assault	0
● Rape	0
● Burglary	0
● Theft from Auto	0
● Theft from Yard	1
● Theft from Building	1
● Shoplifting	0
● Other Larceny	0
● Auto Theft	0
● Snatching/PickPkt	0
<b>Total</b>	<b>2</b>

Older incidents slightly smaller

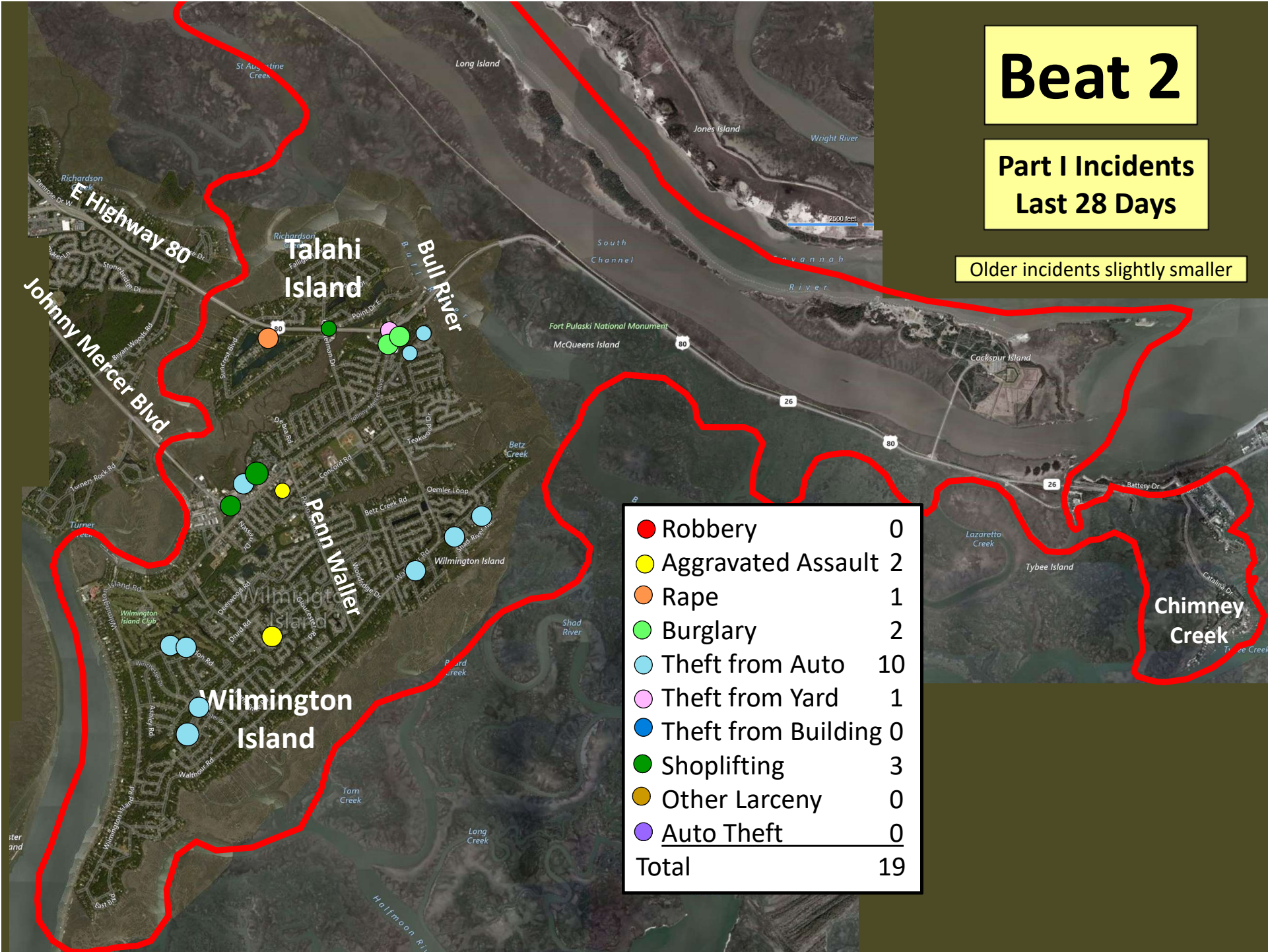




# Beat 2

Part I Incidents  
Last 28 Days

Older incidents slightly smaller

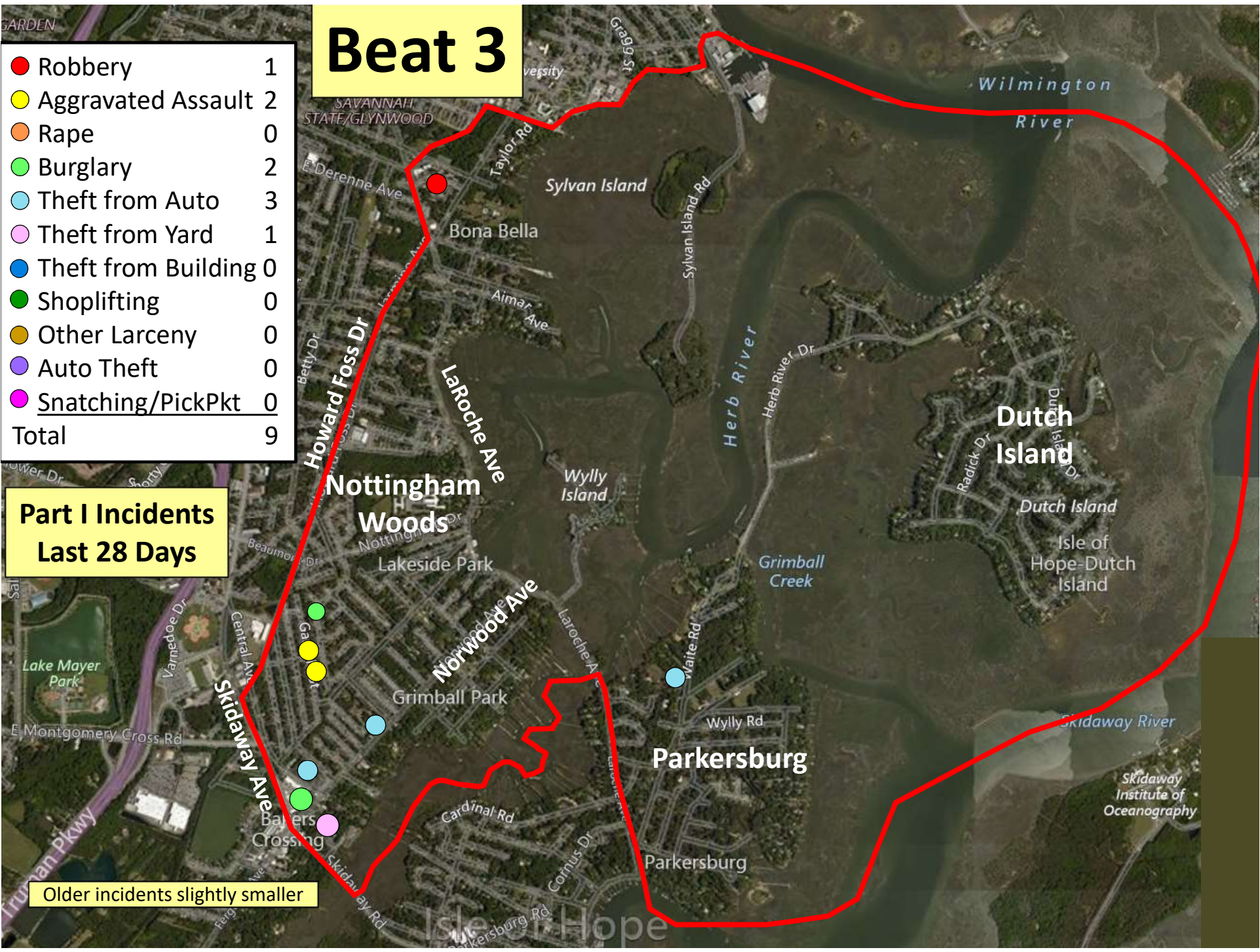




# Beat 3

● Robbery	1
● Aggravated Assault	2
● Rape	0
● Burglary	2
● Theft from Auto	3
● Theft from Yard	1
● Theft from Building	0
● Shoplifting	0
● Other Larceny	0
● Auto Theft	0
● Snatching/PickPkt	0
<b>Total</b>	<b>9</b>

## Part I Incidents Last 28 Days

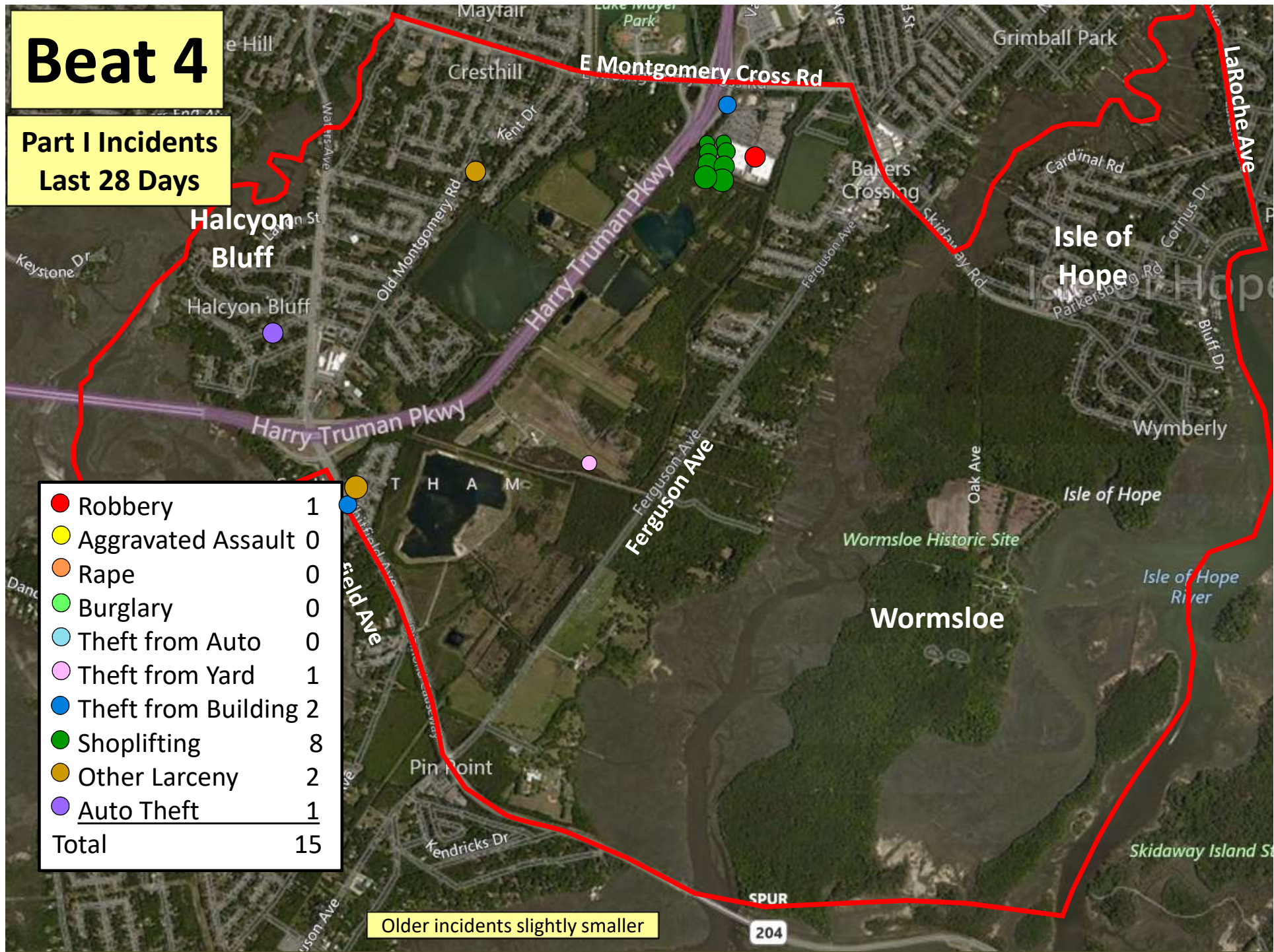


Older incidents slightly smaller



# Beat 4

## Part I Incidents Last 28 Days

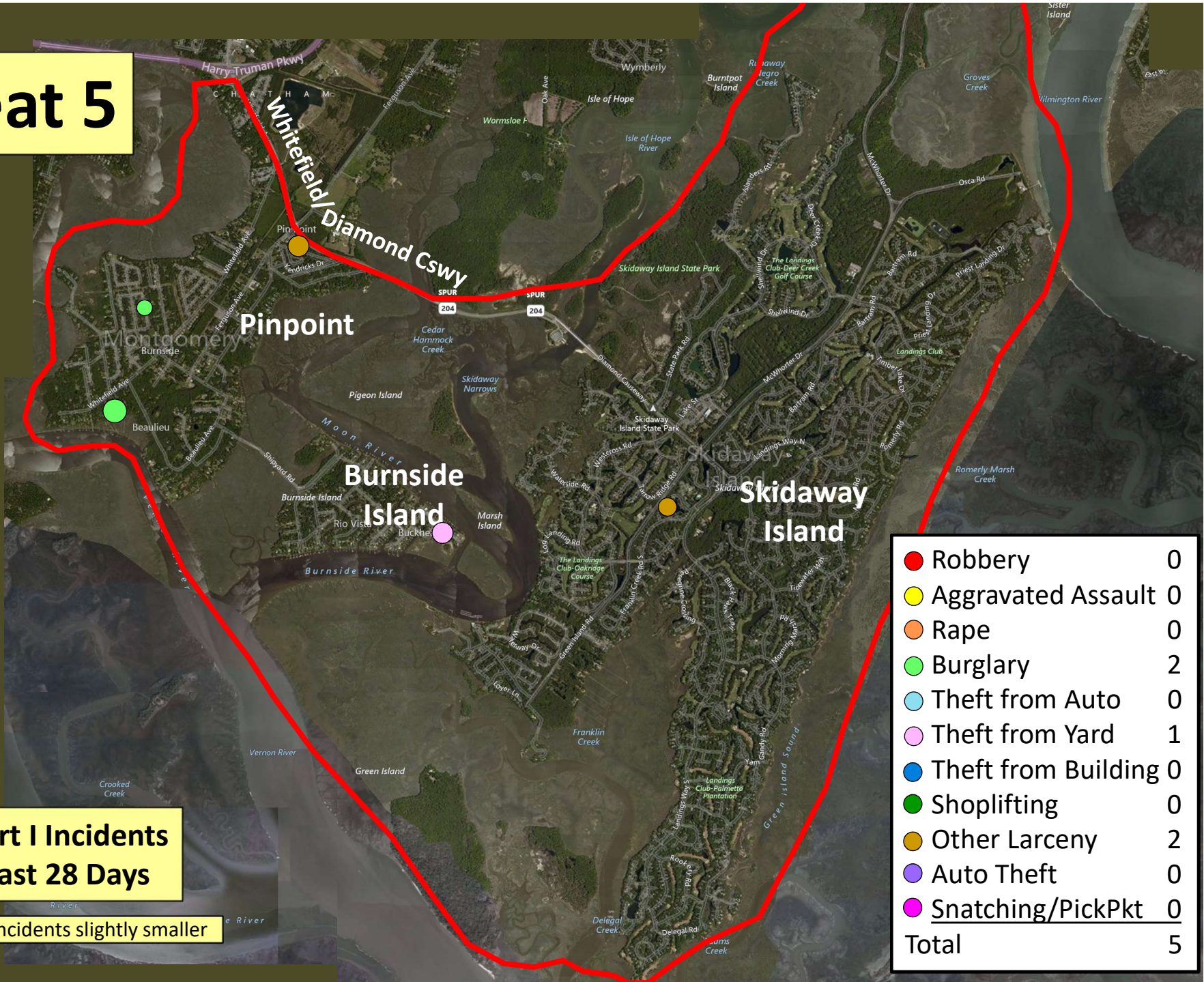


● Robbery	1
● Aggravated Assault	0
● Rape	0
● Burglary	0
● Theft from Auto	0
● Theft from Yard	1
● Theft from Building	2
● Shoplifting	8
● Other Larceny	2
● Auto Theft	1
<b>Total</b>	<b>15</b>

Older incidents slightly smaller



# Beat 5



**Part I Incidents  
Last 28 Days**

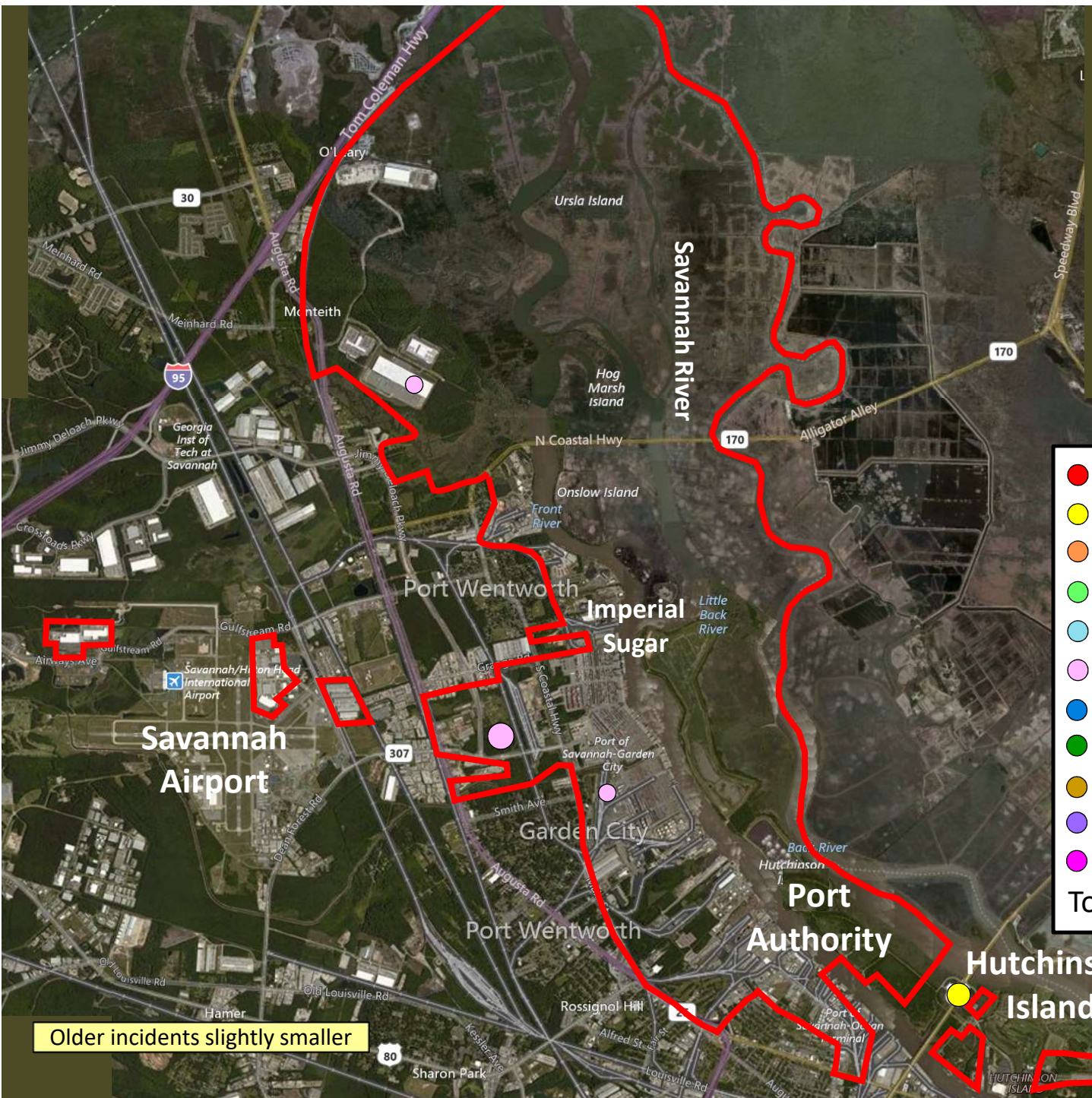
Older incidents slightly smaller



# Beat 6

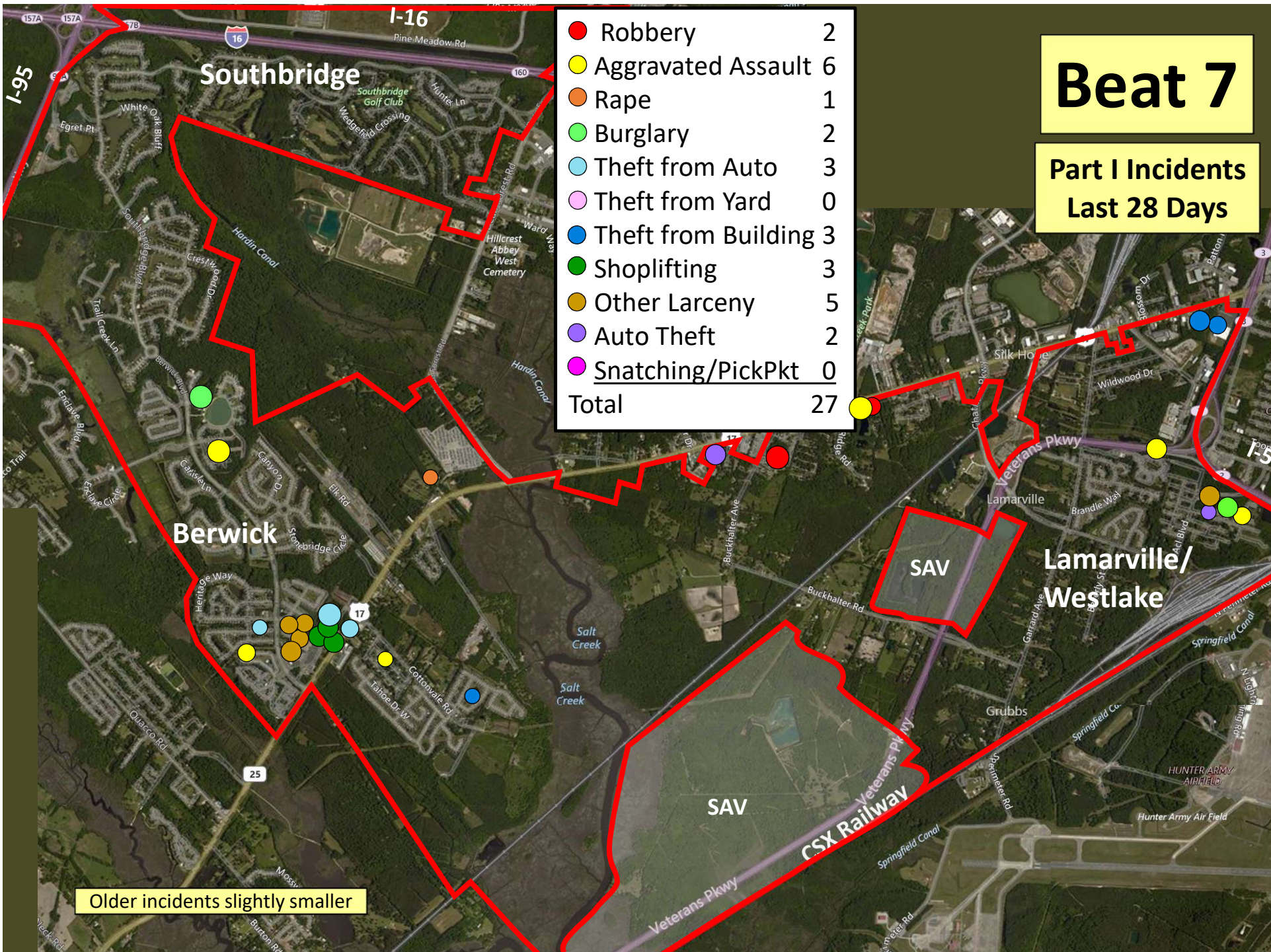
## Part I Incidents Last 28 Days

● Robbery	0
● Aggravated Assault	1
● Rape	0
● Burglary	0
● Theft from Auto	0
● Theft from Yard	3
● Theft from Building	0
● Shoplifting	0
● Other Larceny	0
● Auto Theft	0
● Snatching/PickPkt	0
<b>Total</b>	<b>4</b>



Older incidents slightly smaller





● Robbery	2
● Aggravated Assault	6
● Rape	1
● Burglary	2
● Theft from Auto	3
● Theft from Yard	0
● Theft from Building	3
● Shoplifting	3
● Other Larceny	5
● Auto Theft	2
● Snatching/PickPkt	0
<b>Total</b>	<b>27</b>

# Beat 7

Part I Incidents  
Last 28 Days

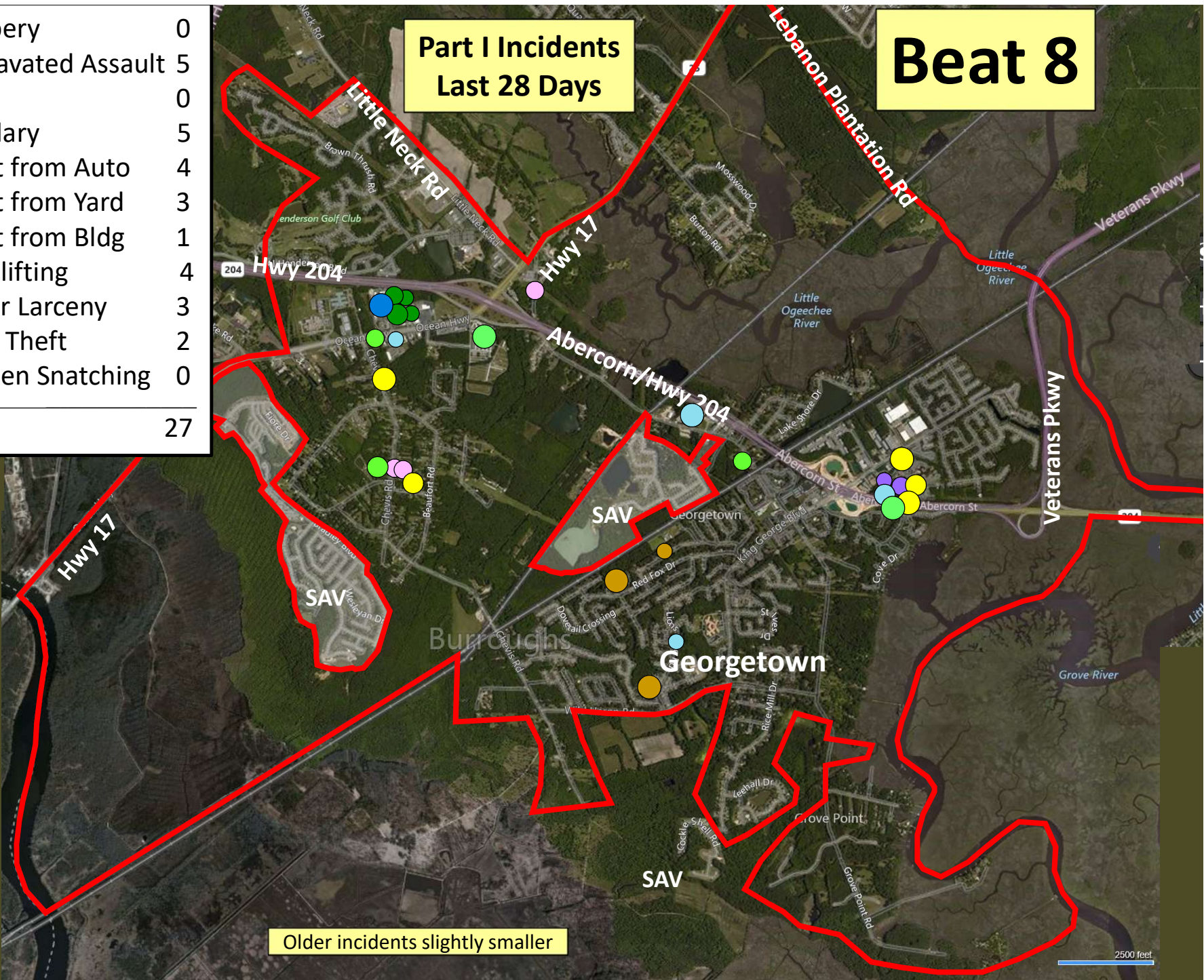
Older incidents slightly smaller



**Part I Incidents  
Last 28 Days**

**Beat 8**

● Robbery	0
● Aggravated Assault	5
● Rape	0
● Burglary	5
● Theft from Auto	4
● Theft from Yard	3
● Theft from Bldg	1
● Shoplifting	4
● Other Larceny	3
● Auto Theft	2
● Sudden Snatching	0
<b>Total</b>	<b>27</b>



Older incidents slightly smaller

2500 feet



# Beat 9

Part I Incidents  
Last 28 Days

● Robbery	0
● Aggravated Assault	6
● Rape	0
● Burglary	2
● Theft from Auto	3
● Theft from Yard	0
● Theft from Building	1
● Shoplifting	1
● Other Larceny	1
● Auto Theft	1
● Snatching/PickPkt	0
<b>Total</b>	<b>15</b>



Older incidents slightly smaller