

Beat 1

Part I Incidents Last 28 Days

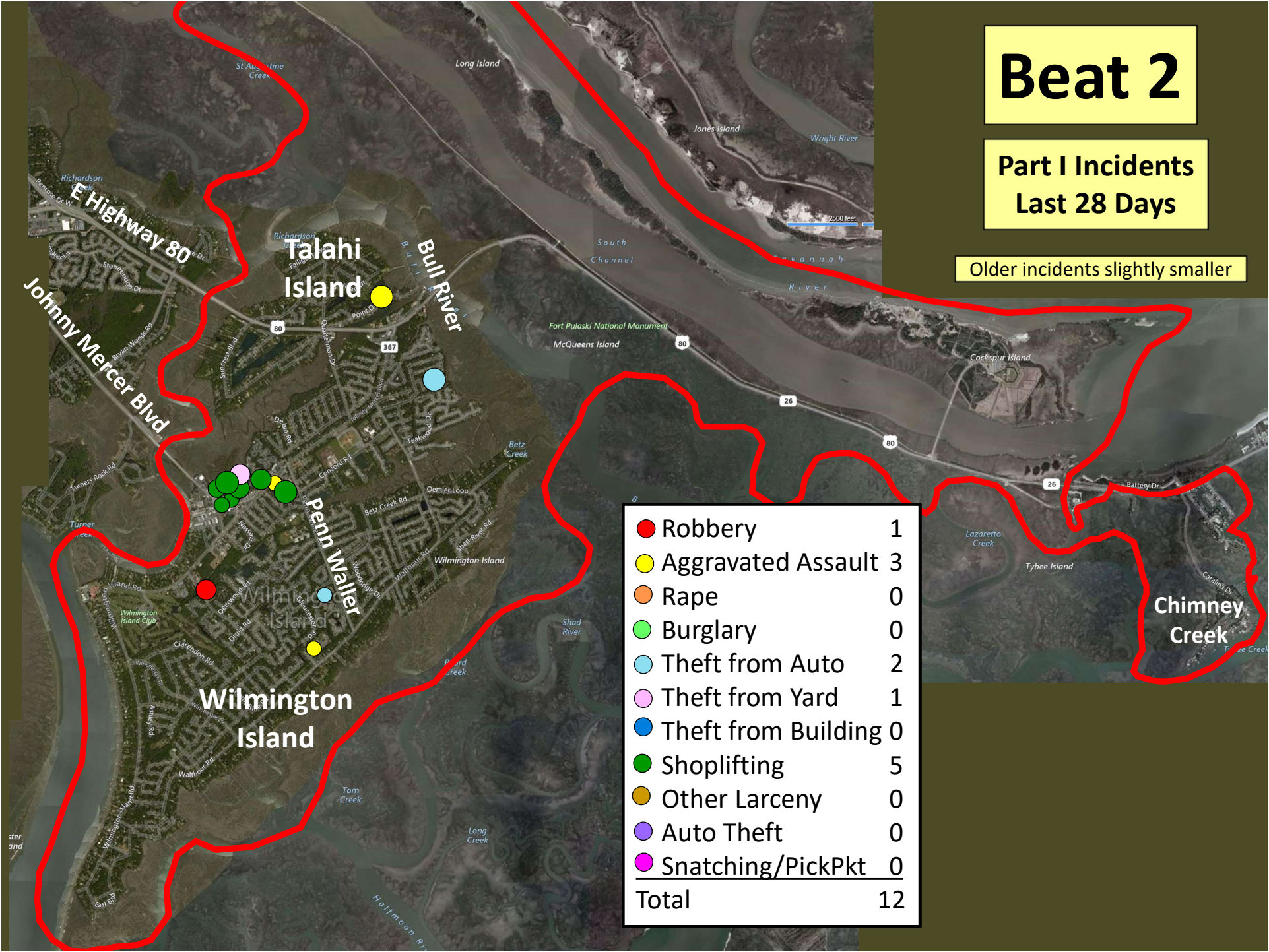
○ Arson	2
● Robbery	0
● Aggravated Assault	1
● Rape	0
● Burglary	1
● Theft from Auto	0
● Theft from Yard	2
● Theft from Building	0
● Shoplifting	1
● Other Larceny	0
● Auto Theft	2
● <u>Snatching/PickPkt</u>	<u>0</u>
Total	9

Older incidents slightly smaller

Beat 2

Part I Incidents Last 28 Days

Older incidents slightly smaller



The map displays Beat 2, which includes Talahi Island, Penn Waller, and Wilmington Island. A red outline delineates the beat's boundary. Various streets and water bodies are labeled, including E Highway 80, Johnny Mercer Blvd, Bull River, and Chimney Creek. Incident locations are marked with colored dots: a red dot for Robbery, a yellow dot for Aggravated Assault, a light blue dot for Theft from Auto, a green dot for Burglary, a pink dot for Theft from Yard, a blue dot for Theft from Building, a dark green dot for Shoplifting, and a purple dot for Snatching/PickPkt. A legend table in the bottom right corner provides the count for each incident type.

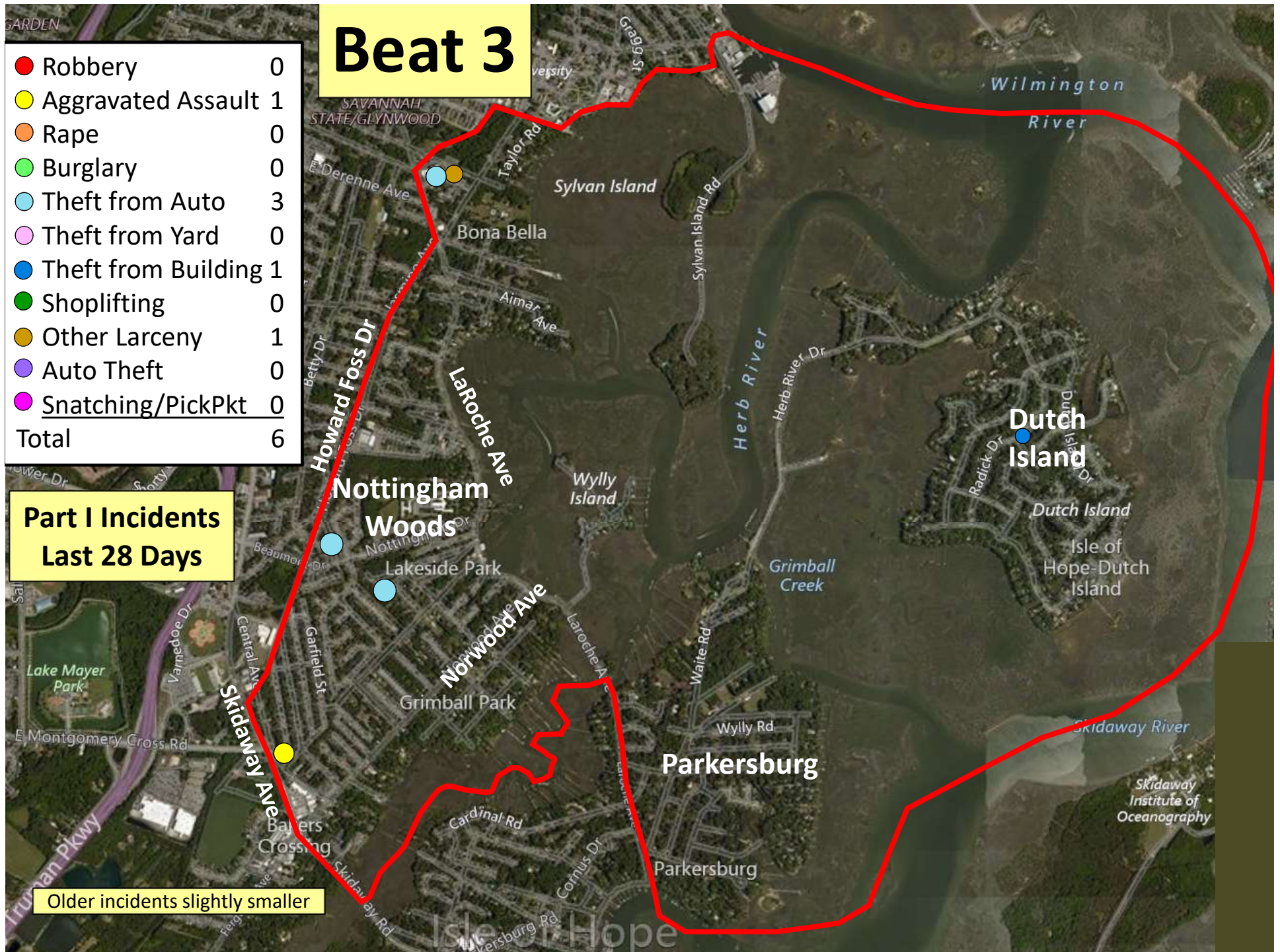
Robbery	1
Aggravated Assault	3
Rape	0
Burglary	0
Theft from Auto	2
Theft from Yard	1
Theft from Building	0
Shoplifting	5
Other Larceny	0
Auto Theft	0
Snatching/PickPkt	0
Total	12

Beat 3

● Robbery	0
● Aggravated Assault	1
● Rape	0
● Burglary	0
● Theft from Auto	3
● Theft from Yard	0
● Theft from Building	1
● Shoplifting	0
● Other Larceny	1
● Auto Theft	0
● Snatching/PickPkt	0
Total	6

Part I Incidents Last 28 Days

Older incidents slightly smaller

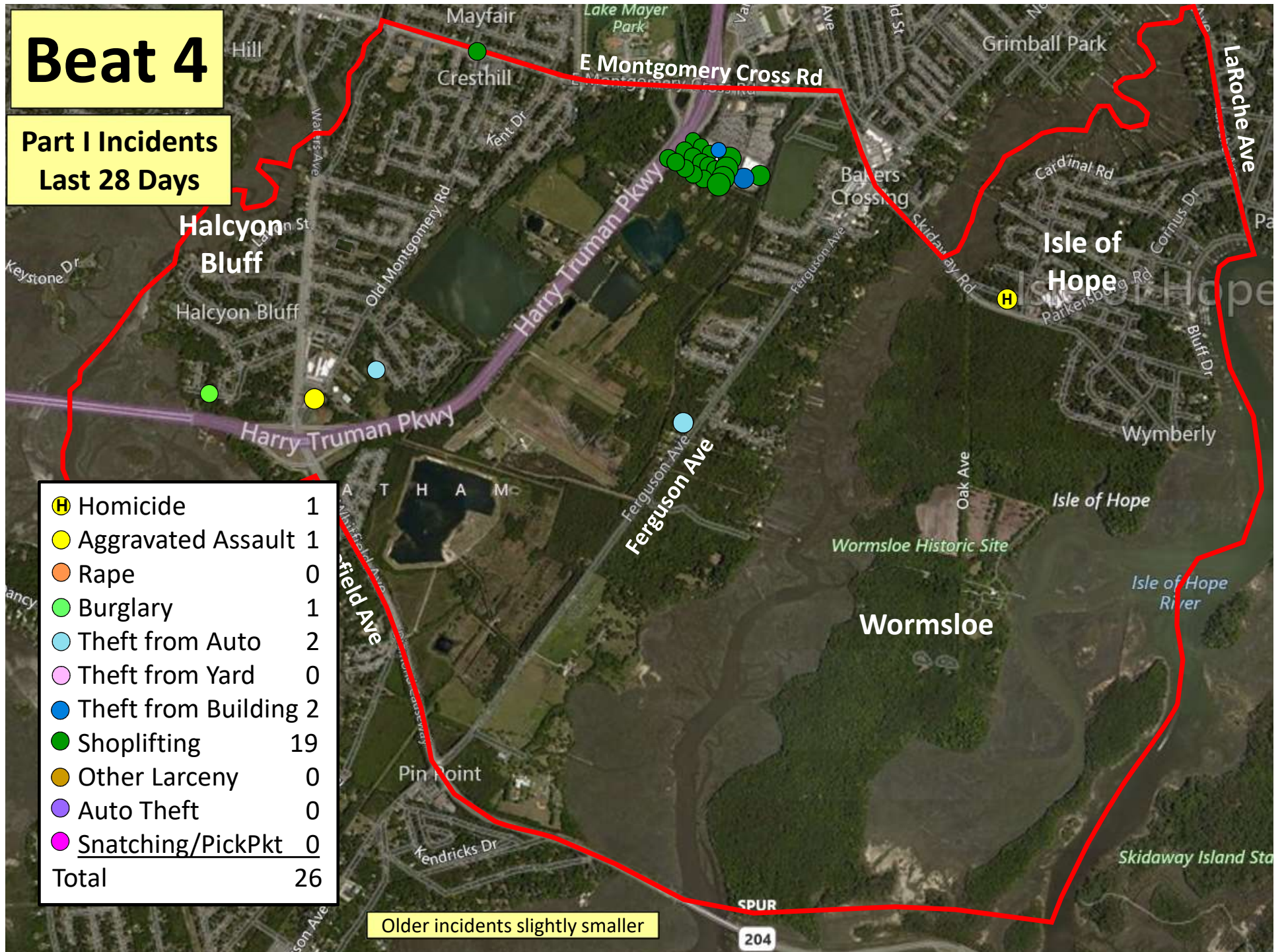


Beat 4

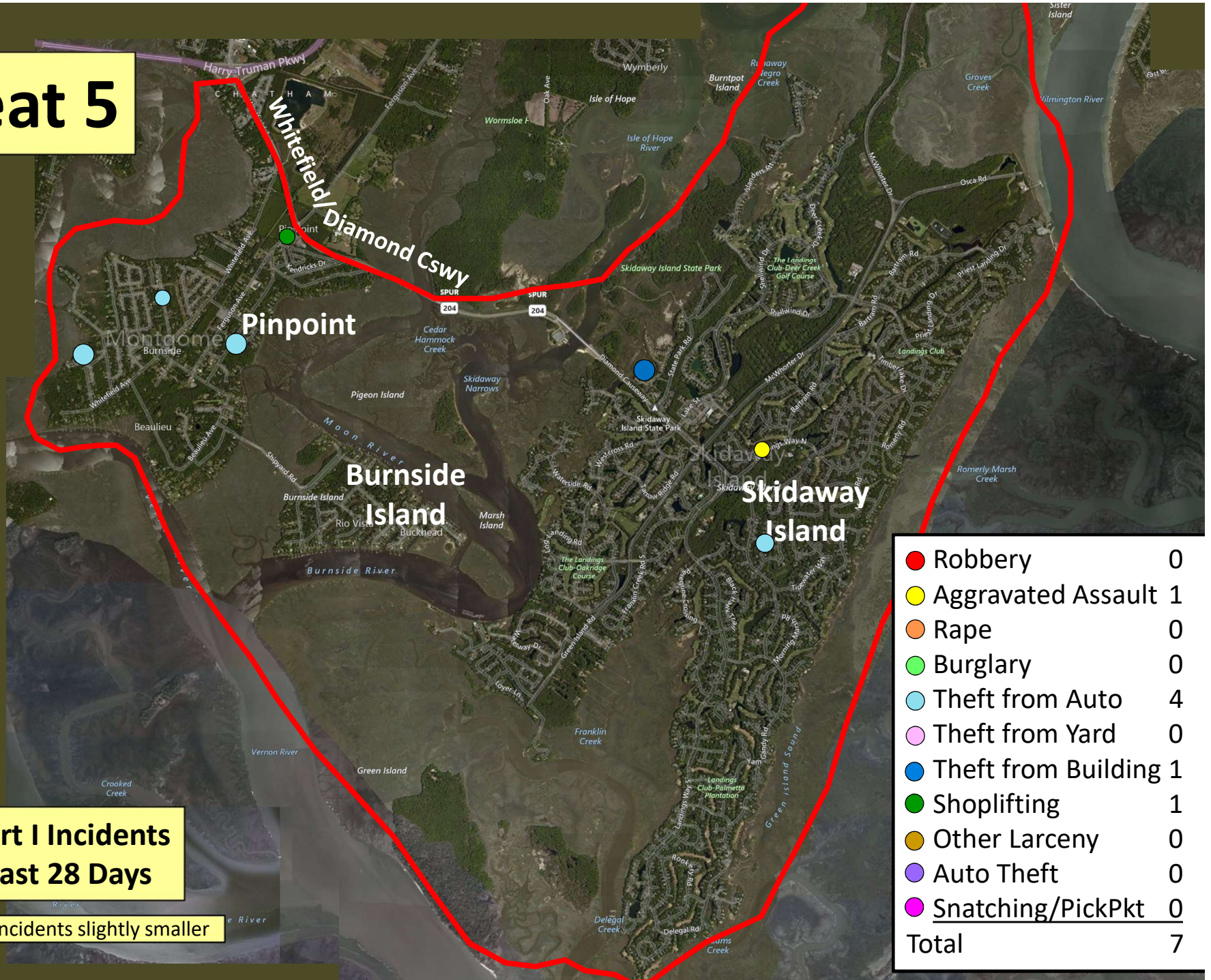
Part I Incidents Last 28 Days

Homicide	1
Aggravated Assault	1
Rape	0
Burglary	1
Theft from Auto	2
Theft from Yard	0
Theft from Building	2
Shoplifting	19
Other Larceny	0
Auto Theft	0
Snatching/PickPkt	0
Total	26

Older incidents slightly smaller



Beat 5



**Part I Incidents
Last 28 Days**

Older incidents slightly smaller

● Robbery	0
● Aggravated Assault	1
● Rape	0
● Burglary	0
● Theft from Auto	4
● Theft from Yard	0
● Theft from Building	1
● Shoplifting	1
● Other Larceny	0
● Auto Theft	0
● Snatching/PickPkt	0
Total	7

Beat 6

Part I Incidents
Last 28 Days

● Robbery	0
● Aggravated Assault	0
● Rape	0
● Burglary	0
● Theft from Auto	0
● Theft from Yard	0
● Theft from Building	0
● Shoplifting	0
● Other Larceny	0
● Auto Theft	0
● Snatching/PickPkt	0
Total	0

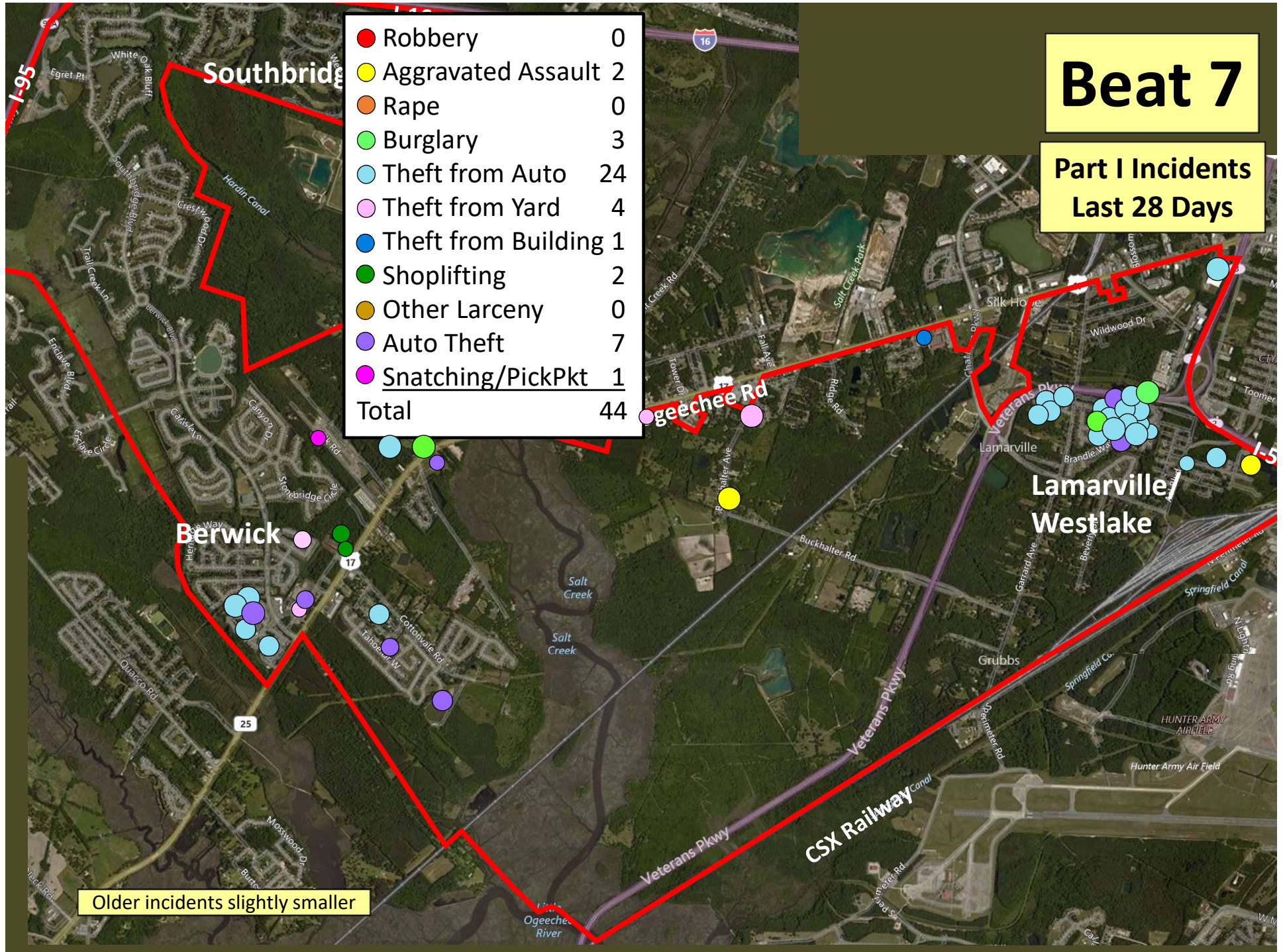
Older incidents slightly smaller

Beat 7

Part I Incidents
Last 28 Days

● Robbery	0
● Aggravated Assault	2
● Rape	0
● Burglary	3
● Theft from Auto	24
● Theft from Yard	4
● Theft from Building	1
● Shoplifting	2
● Other Larceny	0
● Auto Theft	7
● Snatching/PickPkt	1
Total	44

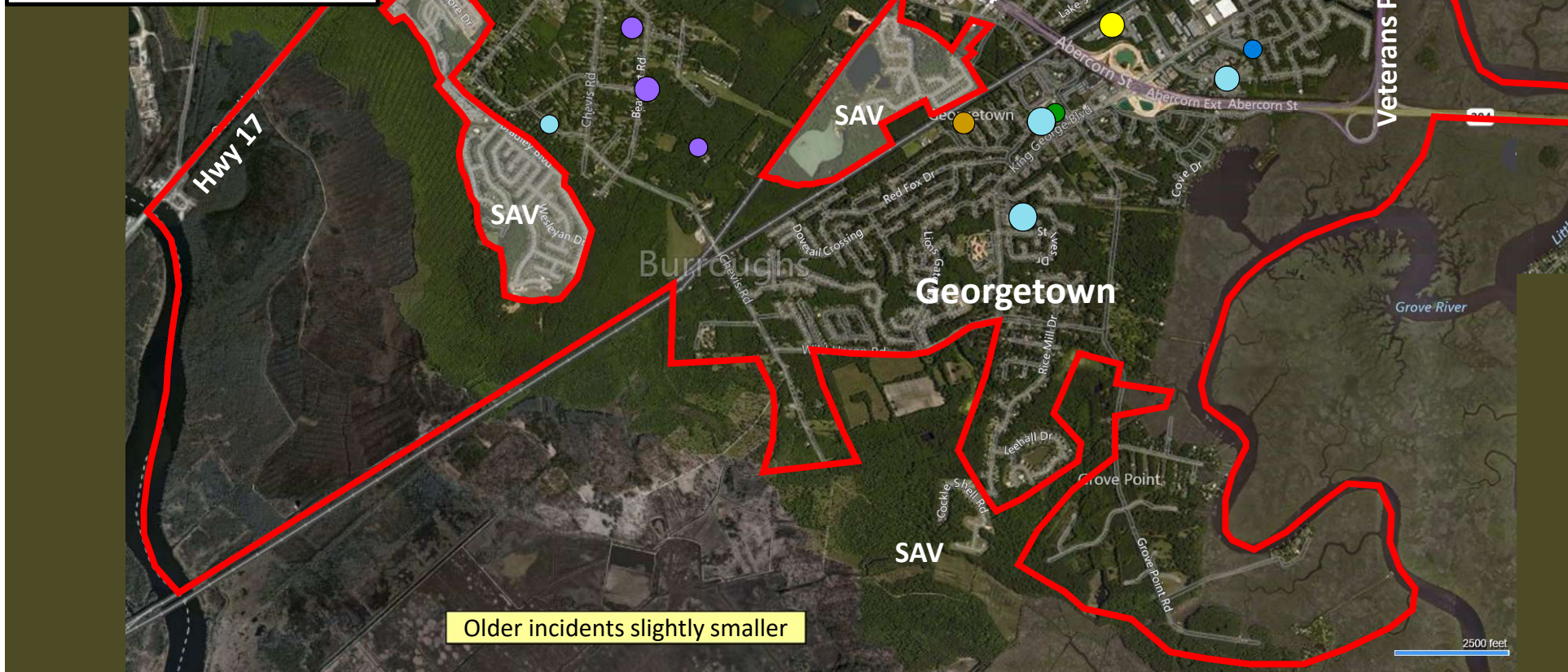
Older incidents slightly smaller



● Robbery	0
● Aggravated Assault	1
● Rape	0
● Burglary	2
● Theft from Auto	11
● Theft from Yard	2
● Theft from Bldg	1
● Shoplifting	15
● Other Larceny	1
● Auto Theft	6
Total	39

**Part I Incidents
Last 28 Days**

Beat 8



Beat 9

Part I Incidents Last 28 Days

Note: The
Enclave
subdivision
is now in
Beat 7

● Robbery	1
● Aggravated Assault	3
● Rape	1
● Burglary	4
● Theft from Auto	10
● Theft from Yard	6
● Theft from Building	2
● Shoplifting	0
● Other Larceny	0
● Auto Theft	4
● Snatching/PickPkt	0
Total	31



Older incidents slightly smaller