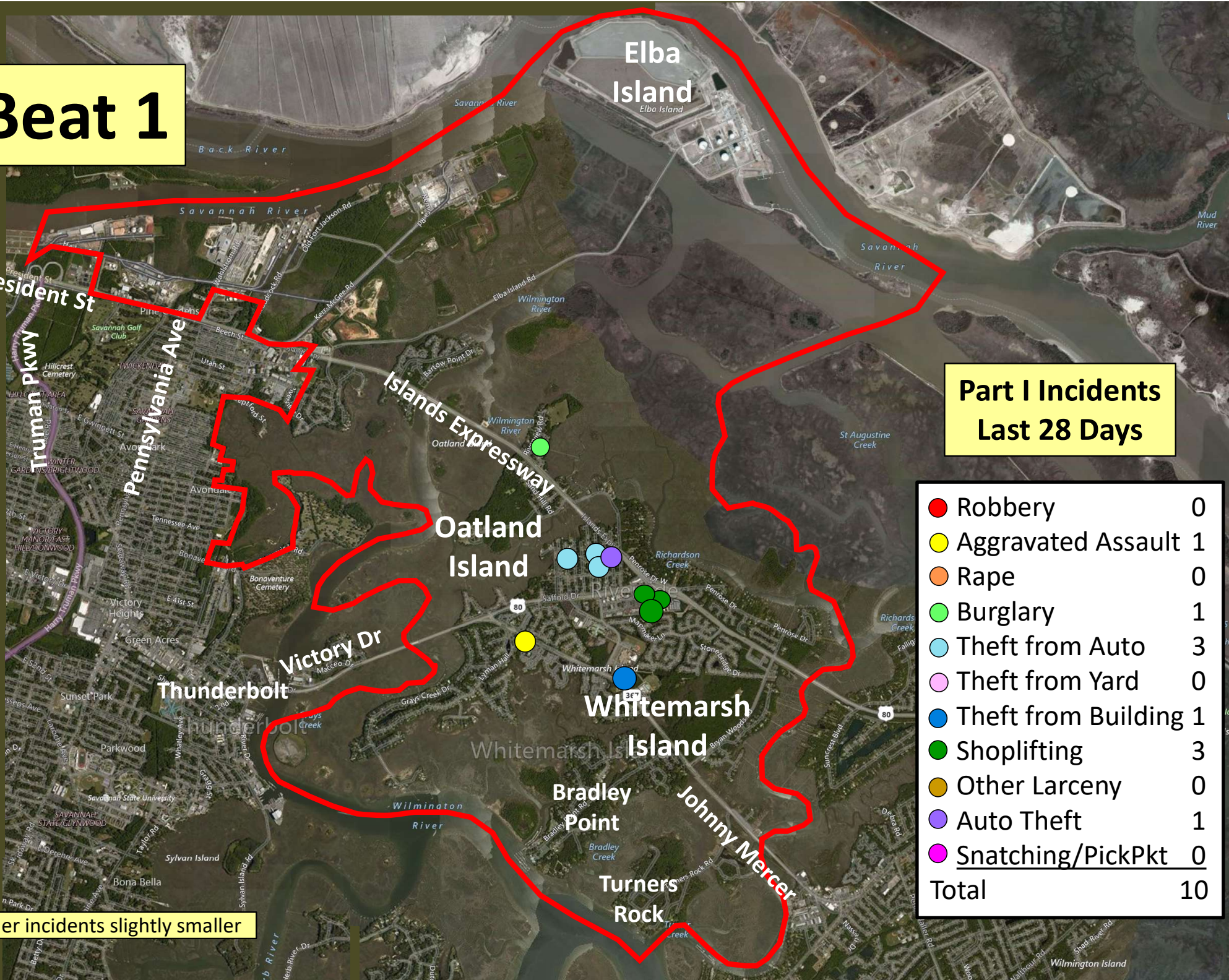


Beat 1

Part I Incidents Last 28 Days

| | |
|-----------------------|-----------|
| ● Robbery | 0 |
| ● Aggravated Assault | 1 |
| ● Rape | 0 |
| ● Burglary | 1 |
| ● Theft from Auto | 3 |
| ● Theft from Yard | 0 |
| ● Theft from Building | 1 |
| ● Shoplifting | 3 |
| ● Other Larceny | 0 |
| ● Auto Theft | 1 |
| ● Snatching/PickPkt | 0 |
| Total | 10 |

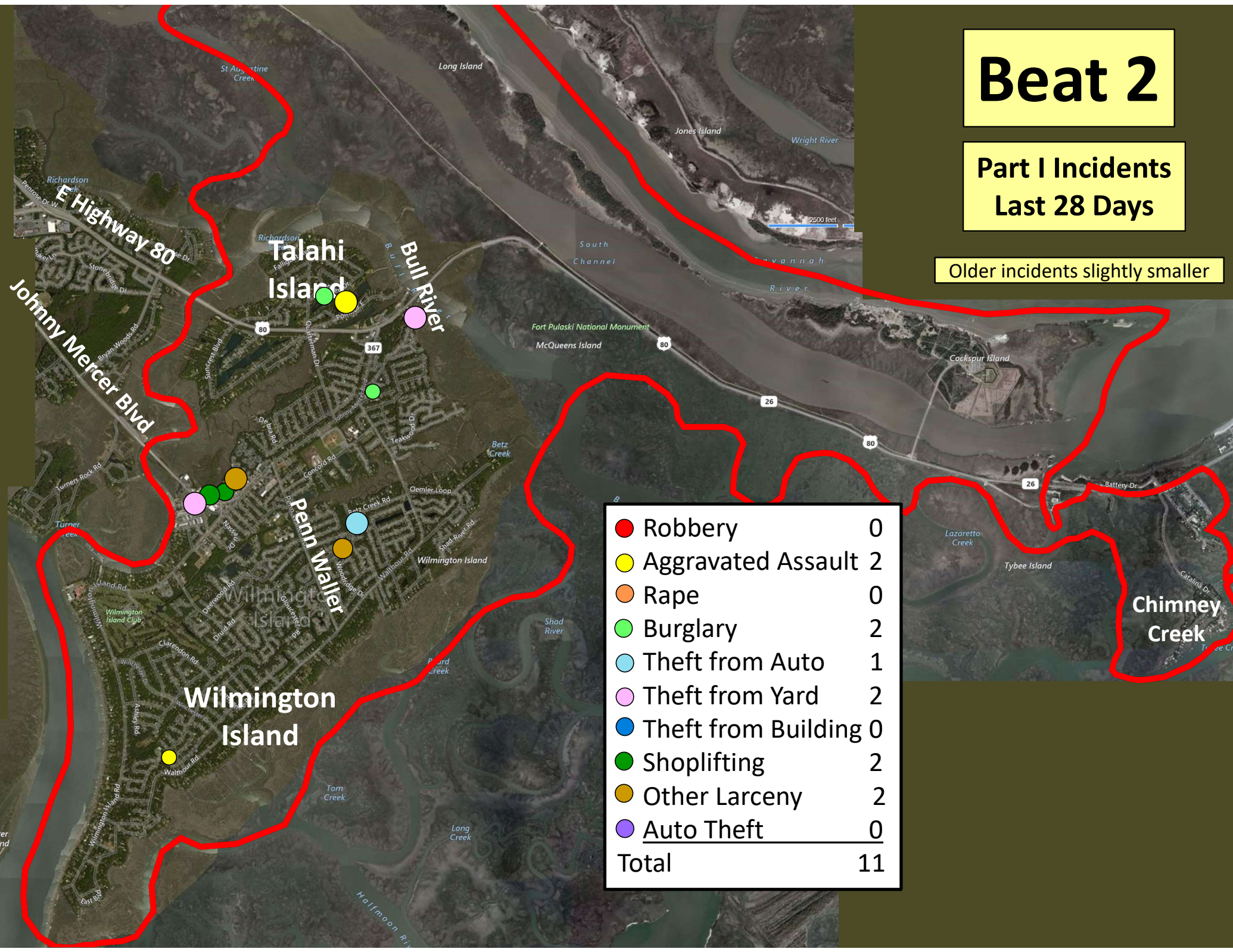
Older incidents slightly smaller



Beat 2

Part I Incidents
Last 28 Days

Older incidents slightly smaller



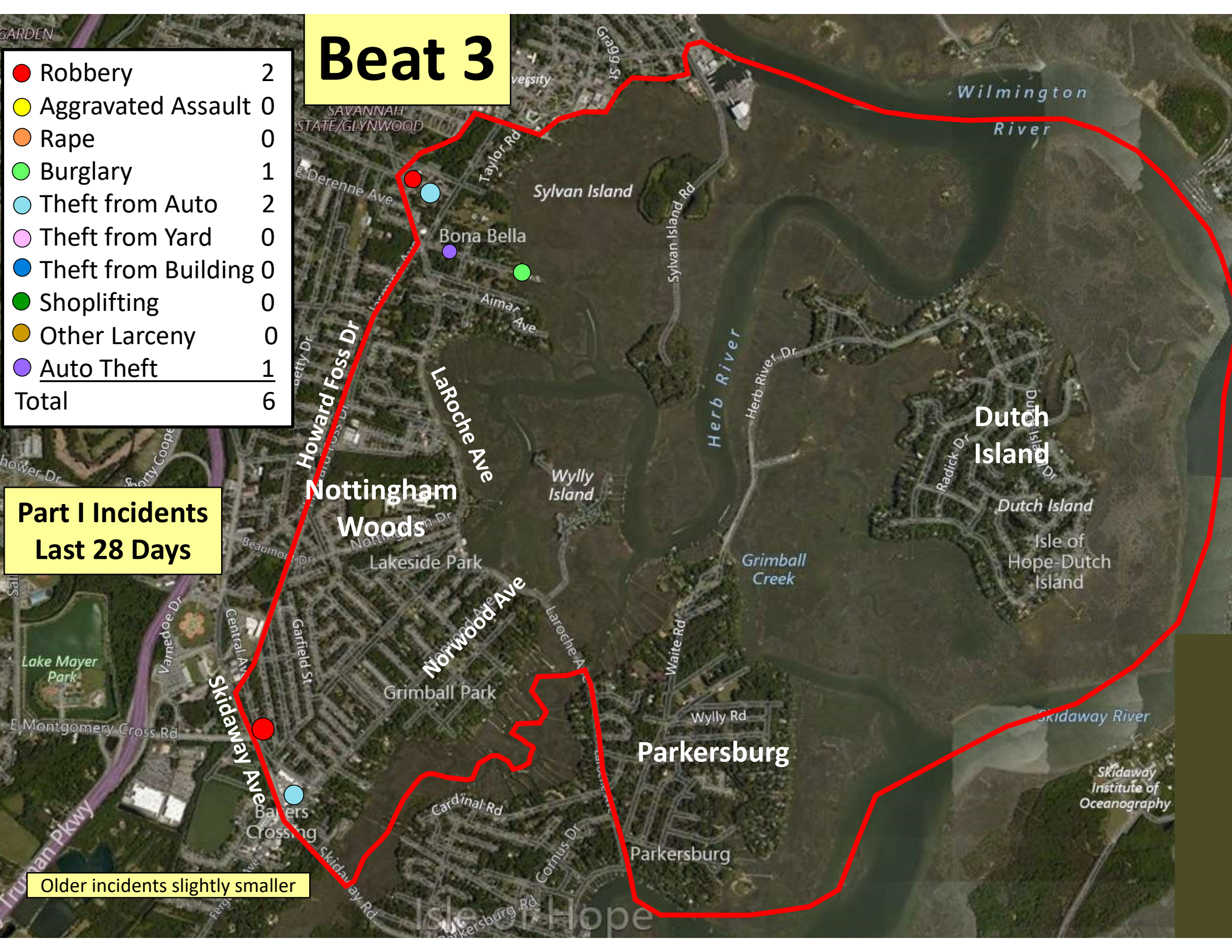
| | |
|-----------------------|-----------|
| ● Robbery | 0 |
| ● Aggravated Assault | 2 |
| ● Rape | 0 |
| ● Burglary | 2 |
| ● Theft from Auto | 1 |
| ● Theft from Yard | 2 |
| ● Theft from Building | 0 |
| ● Shoplifting | 2 |
| ● Other Larceny | 2 |
| ● Auto Theft | 0 |
| Total | 11 |

Beat 3

| | |
|-----------------------|----------|
| ● Robbery | 2 |
| ● Aggravated Assault | 0 |
| ● Rape | 0 |
| ● Burglary | 1 |
| ● Theft from Auto | 2 |
| ● Theft from Yard | 0 |
| ● Theft from Building | 0 |
| ● Shoplifting | 0 |
| ● Other Larceny | 0 |
| ● Auto Theft | 1 |
| Total | 6 |

Part I Incidents Last 28 Days

Older incidents slightly smaller

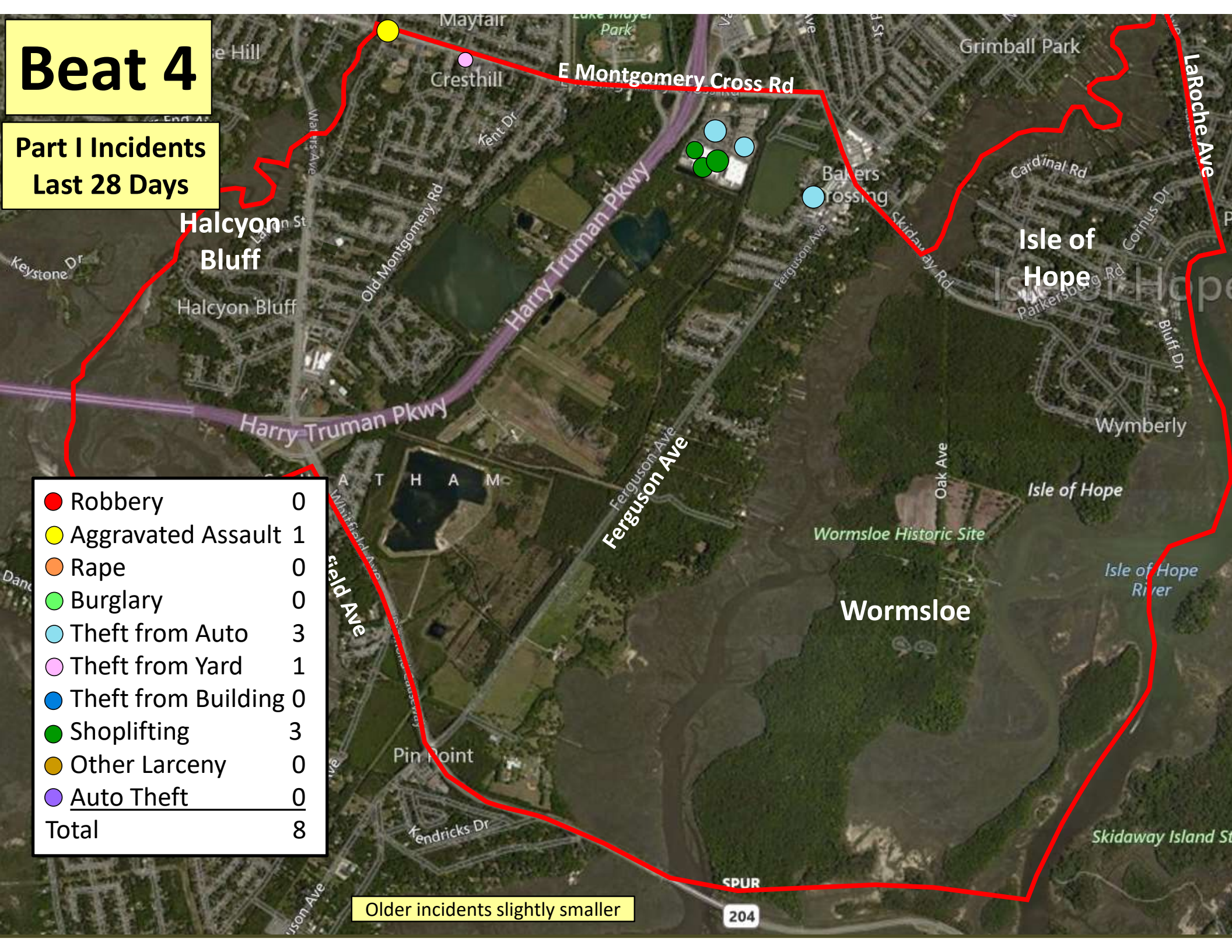


Beat 4

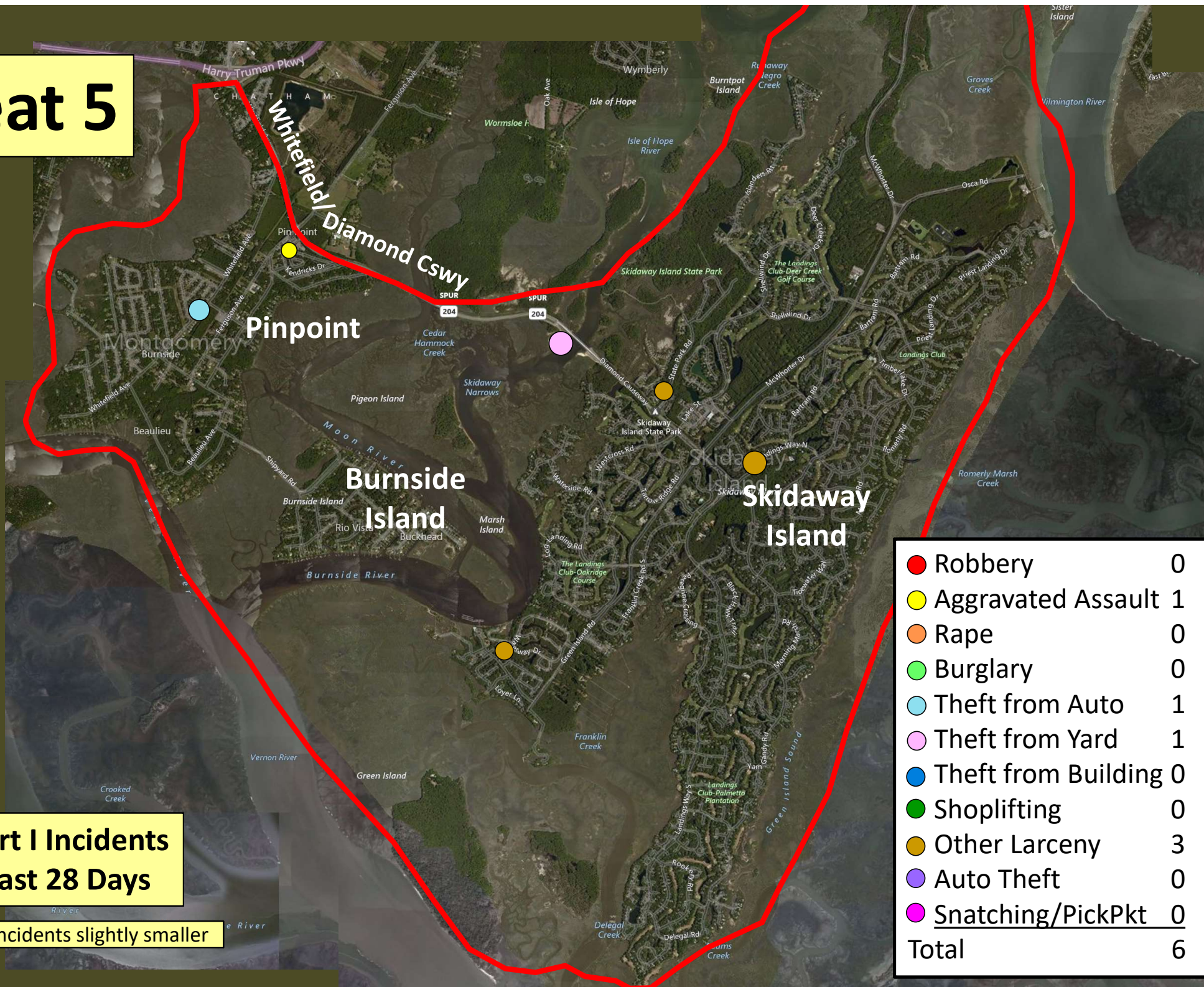
Part I Incidents
Last 28 Days

| | |
|-----------------------|----------|
| ● Robbery | 0 |
| ● Aggravated Assault | 1 |
| ● Rape | 0 |
| ● Burglary | 0 |
| ● Theft from Auto | 3 |
| ● Theft from Yard | 1 |
| ● Theft from Building | 0 |
| ● Shoplifting | 3 |
| ● Other Larceny | 0 |
| ● Auto Theft | 0 |
| Total | 8 |

Older incidents slightly smaller



Beat 5



| | |
|-----------------------|----------|
| ● Robbery | 0 |
| ● Aggravated Assault | 1 |
| ● Rape | 0 |
| ● Burglary | 0 |
| ● Theft from Auto | 1 |
| ● Theft from Yard | 1 |
| ● Theft from Building | 0 |
| ● Shoplifting | 0 |
| ● Other Larceny | 3 |
| ● Auto Theft | 0 |
| ● Snatching/PickPkt | 0 |
| Total | 6 |

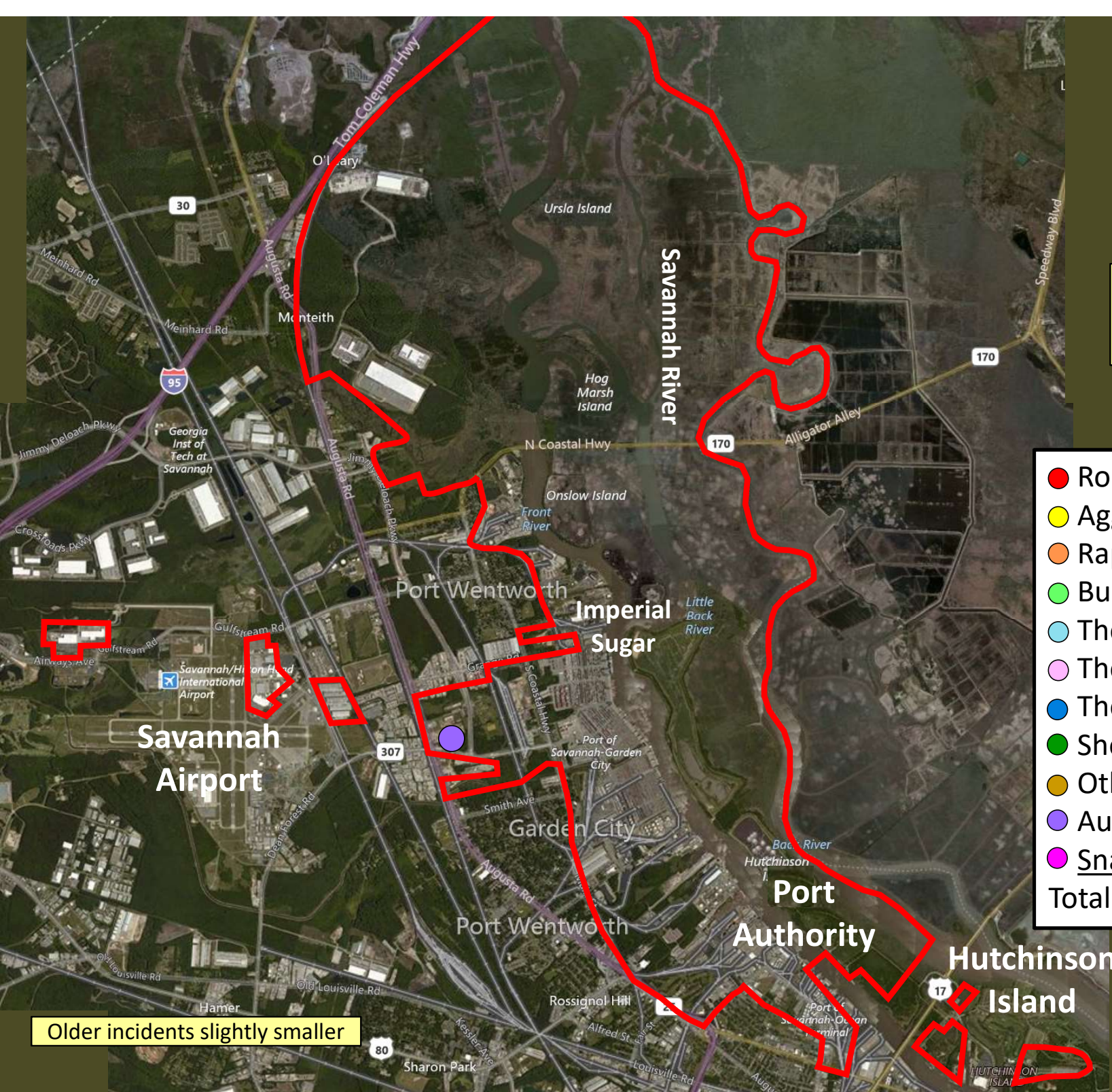
**Part I Incidents
Last 28 Days**

Older incidents slightly smaller

Beat 6

Part I Incidents
Last 28 Days

| | |
|-----------------------|----------|
| ● Robbery | 0 |
| ● Aggravated Assault | 0 |
| ● Rape | 0 |
| ● Burglary | 0 |
| ● Theft from Auto | 0 |
| ● Theft from Yard | 0 |
| ● Theft from Building | 0 |
| ● Shoplifting | 0 |
| ● Other Larceny | 0 |
| ● Auto Theft | 1 |
| ● Snatching/PickPkt | 0 |
| Total | 1 |

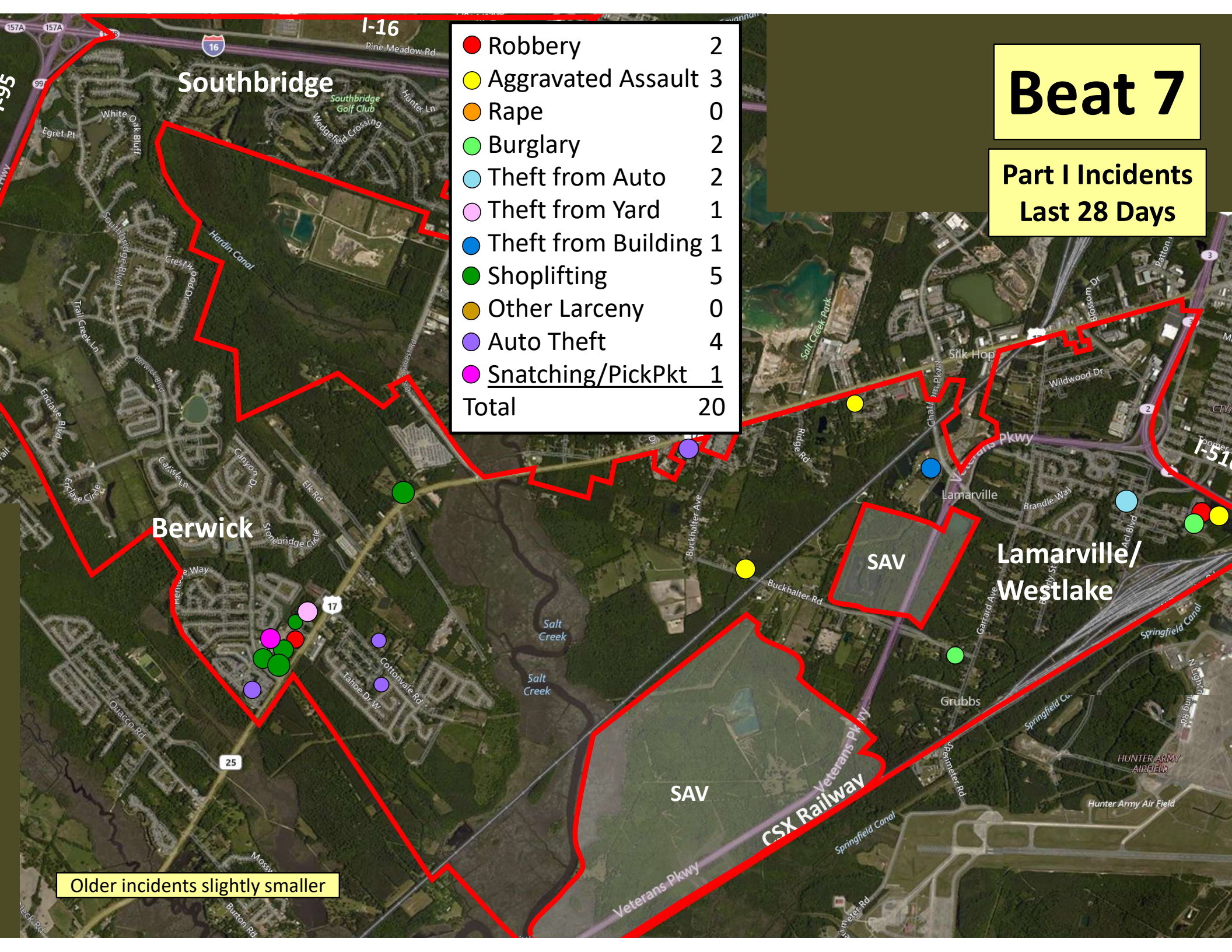


Older incidents slightly smaller

Beat 7

Part I Incidents
Last 28 Days

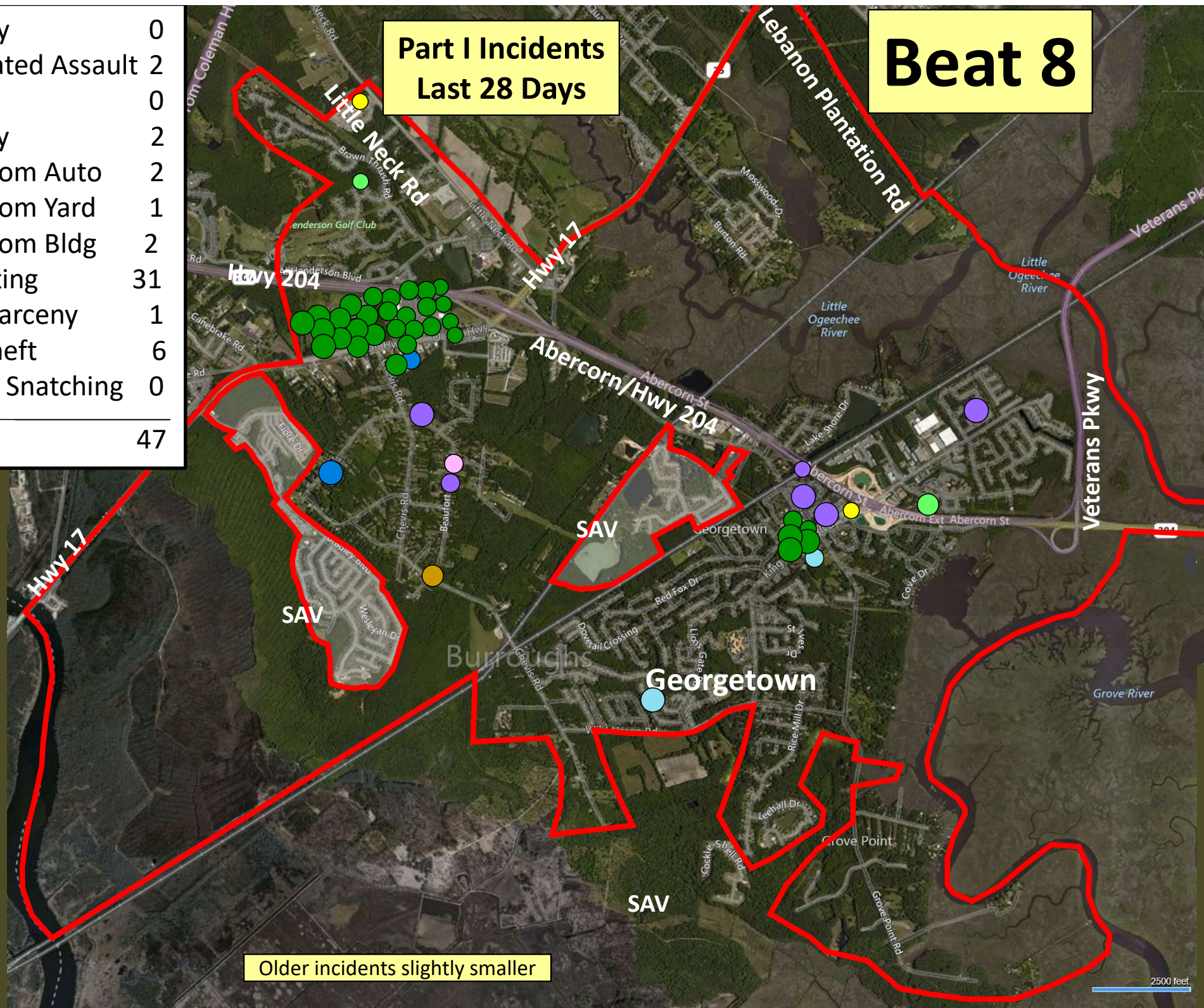
| | |
|-----------------------|-----------|
| ● Robbery | 2 |
| ● Aggravated Assault | 3 |
| ● Rape | 0 |
| ● Burglary | 2 |
| ● Theft from Auto | 2 |
| ● Theft from Yard | 1 |
| ● Theft from Building | 1 |
| ● Shoplifting | 5 |
| ● Other Larceny | 0 |
| ● Auto Theft | 4 |
| ● Snatching/PickPkt | 1 |
| Total | 20 |



Beat 8

Part I Incidents Last 28 Days

| | |
|----------------------|-----------|
| ● Robbery | 0 |
| ● Aggravated Assault | 2 |
| ● Rape | 0 |
| ● Burglary | 2 |
| ● Theft from Auto | 2 |
| ● Theft from Yard | 1 |
| ● Theft from Bldg | 2 |
| ● Shoplifting | 31 |
| ● Other Larceny | 1 |
| ● Auto Theft | 6 |
| ● Sudden Snatching | 0 |
| Total | 47 |

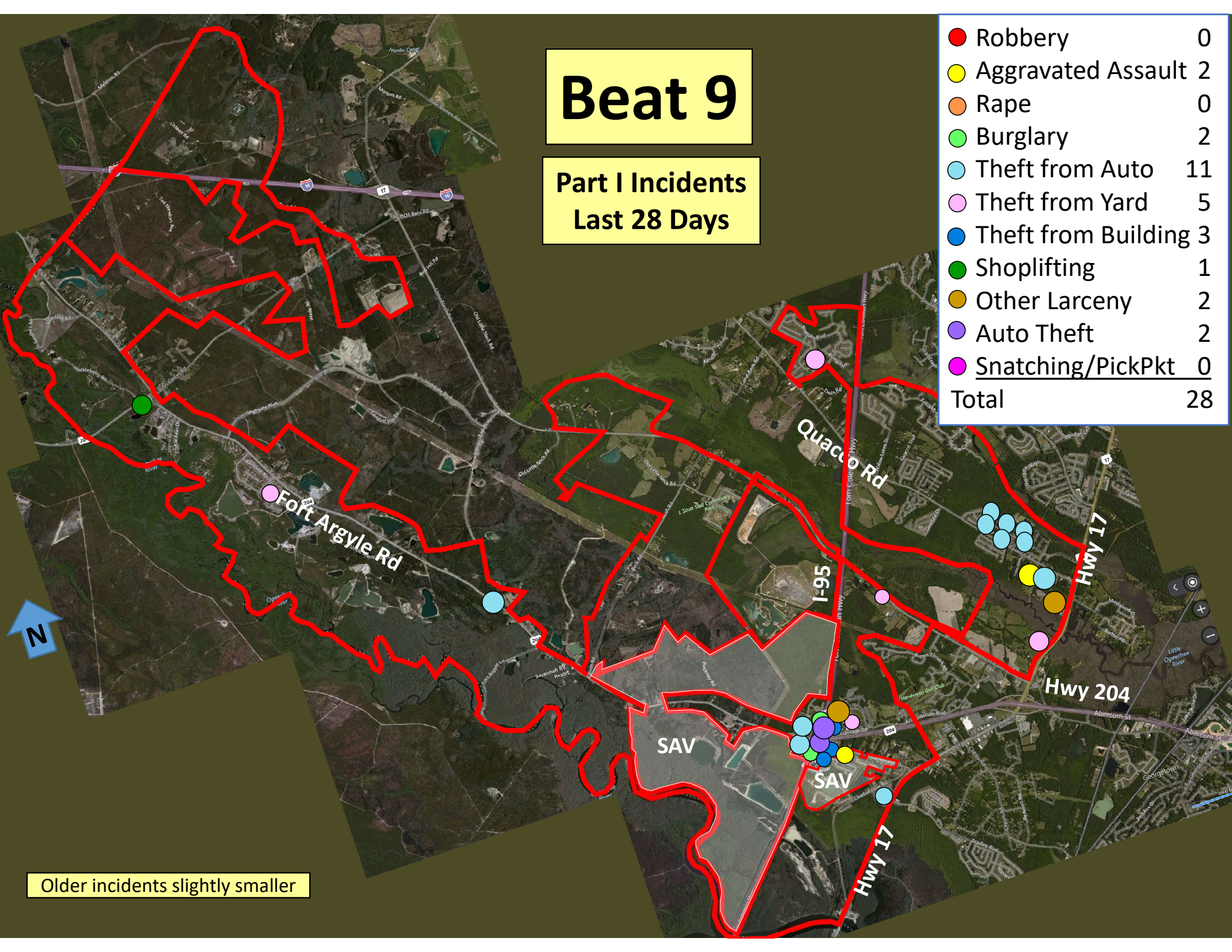


Older incidents slightly smaller

Beat 9

Part I Incidents
Last 28 Days

| | |
|-----------------------|-----------|
| ● Robbery | 0 |
| ● Aggravated Assault | 2 |
| ● Rape | 0 |
| ● Burglary | 2 |
| ● Theft from Auto | 11 |
| ● Theft from Yard | 5 |
| ● Theft from Building | 3 |
| ● Shoplifting | 1 |
| ● Other Larceny | 2 |
| ● Auto Theft | 2 |
| ● Snatching/PickPkt | 0 |
| Total | 28 |



Older incidents slightly smaller