

# Beat 1

## Part I Incidents Last 28 Days

● Arson	1
● Robbery	0
● Aggravated Assault	0
● Rape	2
● Burglary	2
● Theft from Auto	2
● Theft from Yard	1
● Theft from Building	0
● Shoplifting	2
● Other Larceny	0
● Auto Theft	0
● Snatching/PickPkt	1
Total	11

Older incidents slightly smaller



# Beat 2

## Part I Incidents Last 28 Days

Older incidents slightly smaller



The map shows Beat 2, which includes Talahi Island, Penn Wall Island, and Wilmington Island. A red outline marks the beat's boundary. Various streets and landmarks are labeled, including E Highway 80, Johnny Mercer Blvd, Bull River, and the Savannah River. Incident locations are marked with colored dots: Robbery (red), Aggravated Assault (yellow), Rape (orange), Burglary (green), Theft from Auto (light blue), Theft from Yard (pink), Theft from Building (dark blue), Shoplifting (dark green), Other Larceny (gold), Auto Theft (purple), and Snatching/PickPkt (magenta).

Robbery	0
Aggravated Assault	0
Rape	0
Burglary	1
Theft from Auto	1
Theft from Yard	0
Theft from Building	1
Shoplifting	1
Other Larceny	5
Auto Theft	2
Snatching/PickPkt	0
Total	11

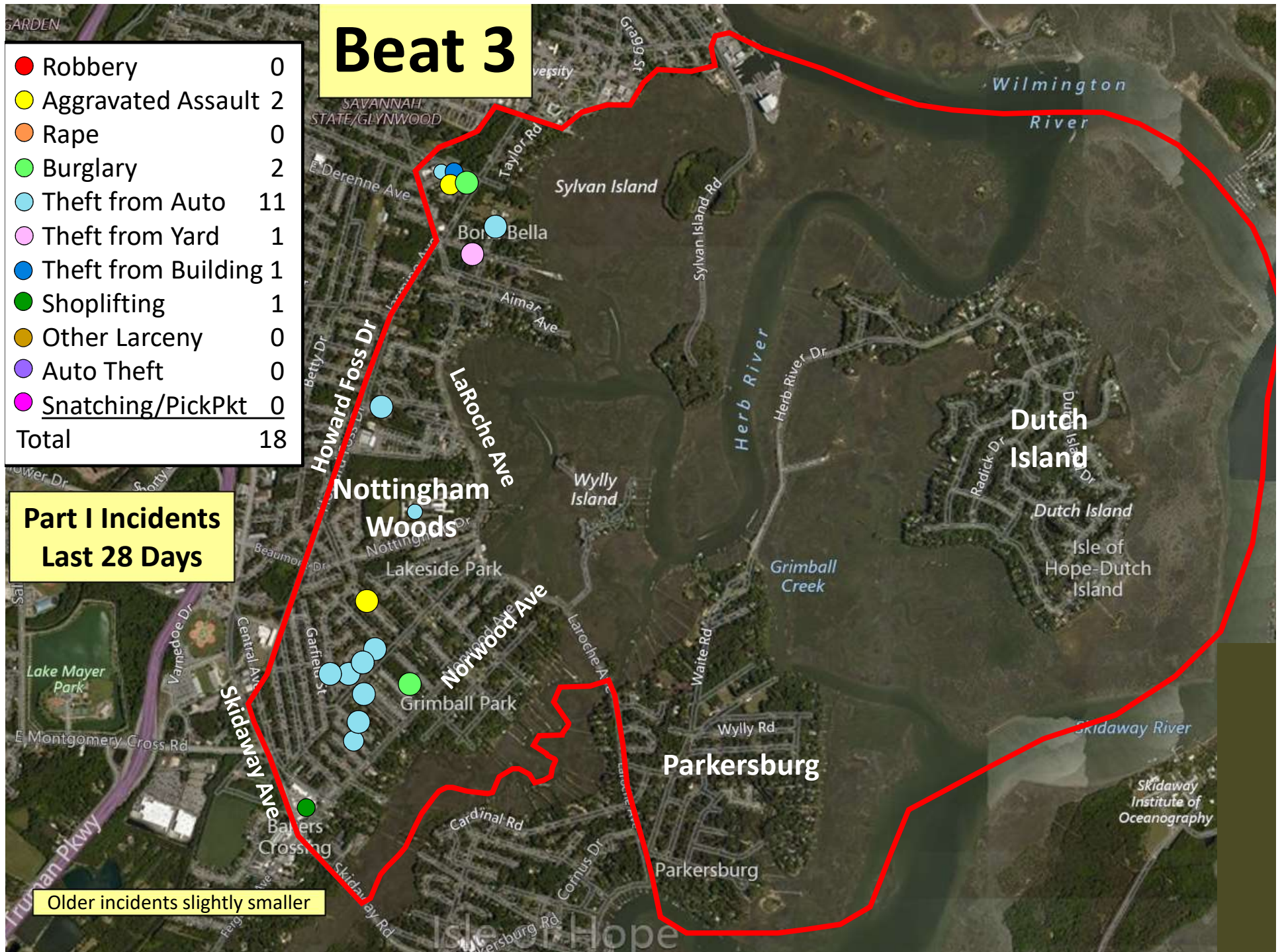


# Beat 3

● Robbery	0
● Aggravated Assault	2
● Rape	0
● Burglary	2
● Theft from Auto	11
● Theft from Yard	1
● Theft from Building	1
● Shoplifting	1
● Other Larceny	0
● Auto Theft	0
● Snatching/PickPkt	0
Total	18

## Part I Incidents Last 28 Days

Older incidents slightly smaller



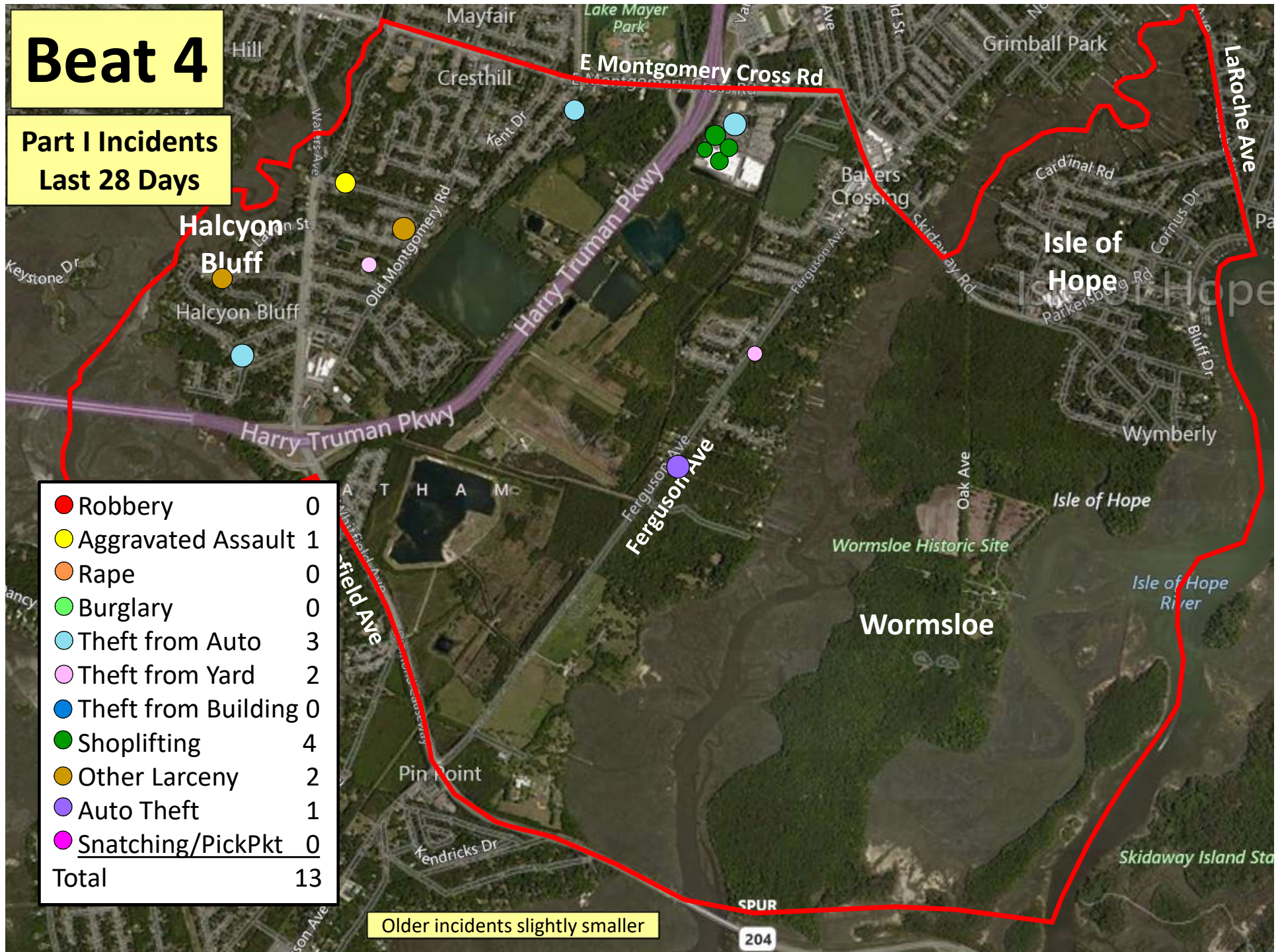


# Beat 4

Part I Incidents  
Last 28 Days

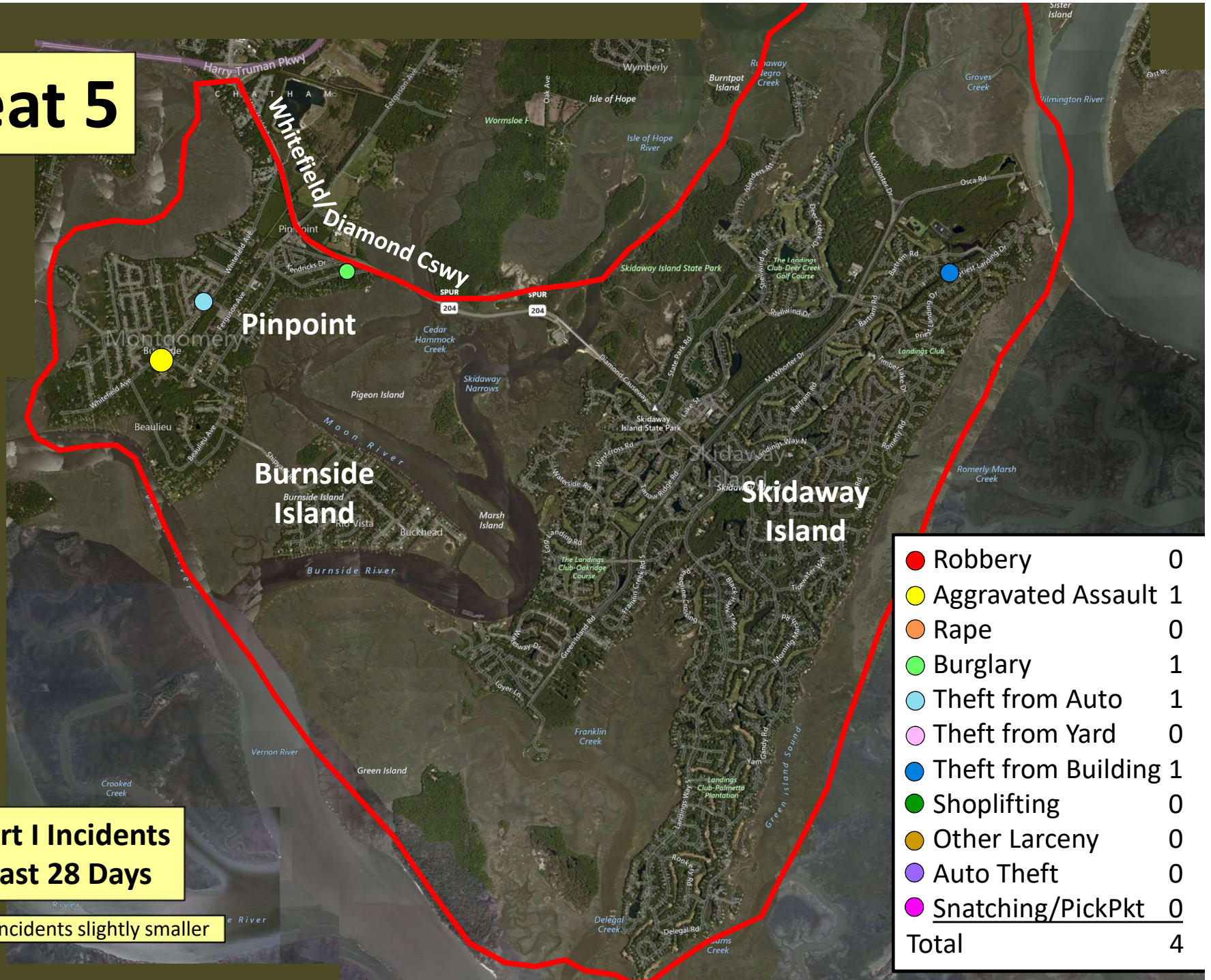
● Robbery	0
● Aggravated Assault	1
● Rape	0
● Burglary	0
● Theft from Auto	3
● Theft from Yard	2
● Theft from Building	0
● Shoplifting	4
● Other Larceny	2
● Auto Theft	1
● Snatching/PickPkt	0
Total	13

Older incidents slightly smaller





# Beat 5



● Robbery	0
● Aggravated Assault	1
● Rape	0
● Burglary	1
● Theft from Auto	1
● Theft from Yard	0
● Theft from Building	1
● Shoplifting	0
● Other Larceny	0
● Auto Theft	0
● Snatching/PickPkt	0
Total	4

Part I Incidents  
Last 28 Days

Older incidents slightly smaller



# Beat 6

Part I Incidents  
Last 28 Days

● Robbery	0
● Aggravated Assault	0
● Rape	0
● Burglary	1
● Theft from Auto	0
● Theft from Yard	1
● Theft from Building	0
● Shoplifting	0
● Other Larceny	0
● Auto Theft	0
● Snatching/PickPkt	0
Total	2

Older incidents slightly smaller



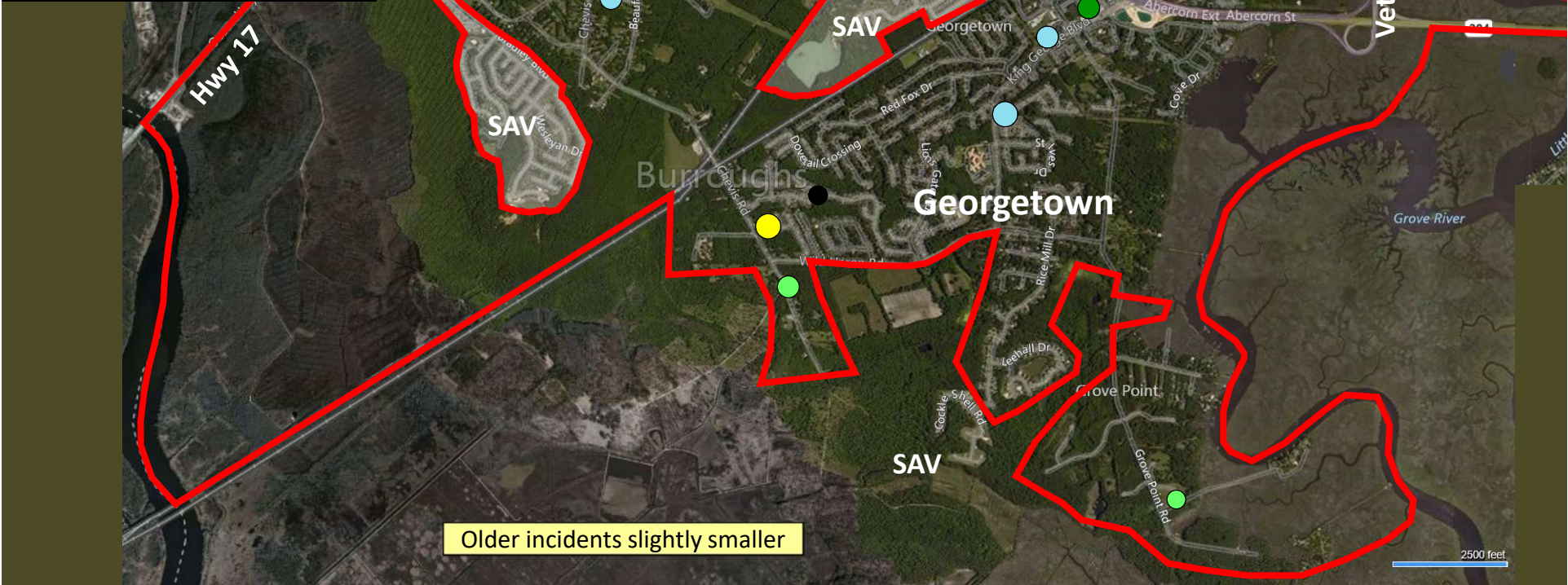




Part I Incidents  
Last 28 Days

Beat 8

● Robbery	2
● Aggravated Assault	3
● Rape	0
● Burglary	6
● Theft from Auto	4
● Theft from Yard	0
● Theft from Bldg	0
● Shoplifting	10
● Other Larceny	1
● Auto Theft	4
● Snatching/PickPkt	0
● Arson	1
<hr/>	
Total	31





# Beat 9

## Part I Incidents Last 28 Days

Note: The  
Enclave  
subdivision  
is now in  
Beat 7

● Robbery	4
● Aggravated Assault	4
● Rape	0
● Burglary	1
● Theft from Auto	5
● Theft from Yard	1
● Theft from Building	2
● Shoplifting	0
● Other Larceny	1
● Auto Theft	9
● Snatching/PickPkt	4
Total	31

