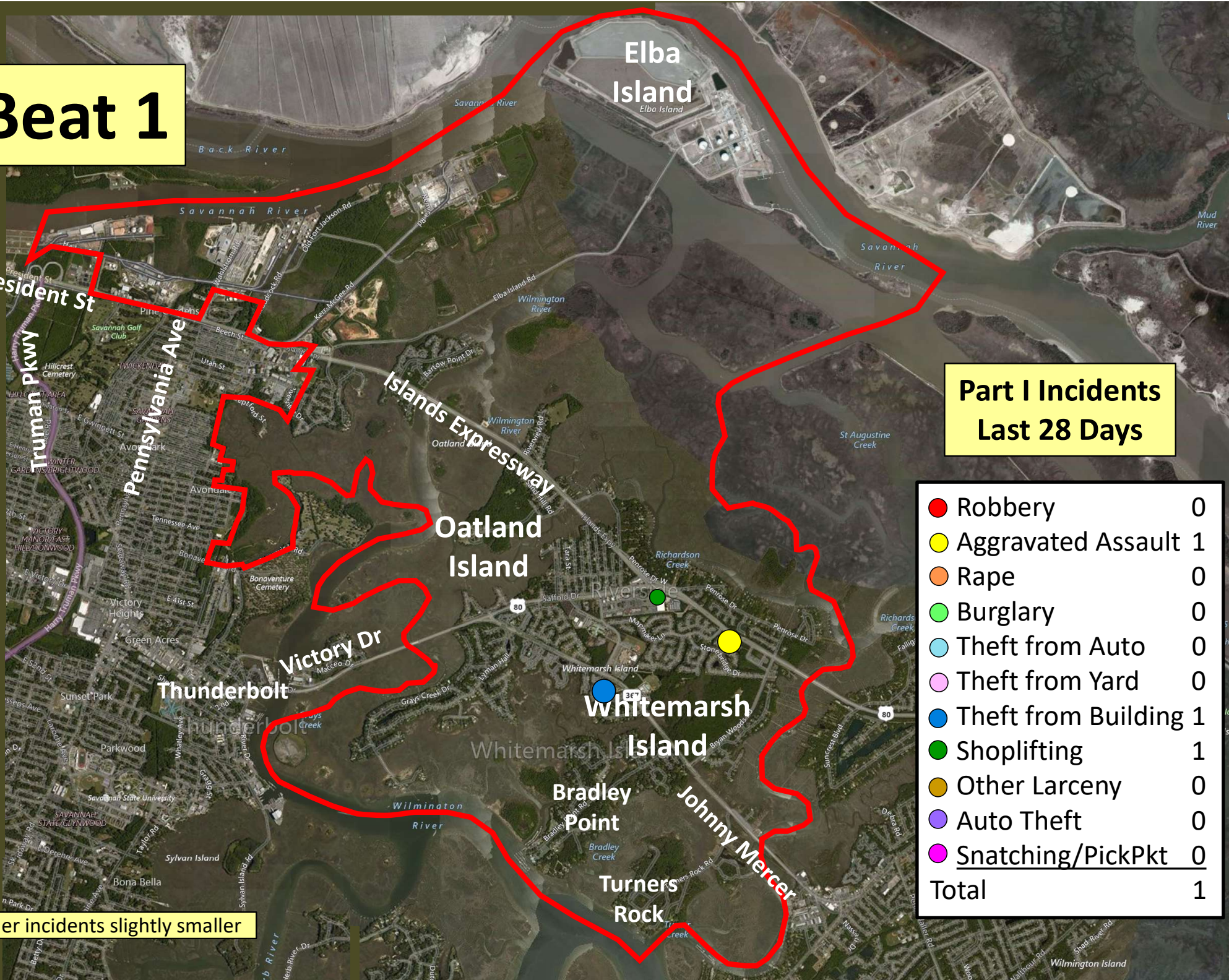


Beat 1

Part I Incidents Last 28 Days

| | |
|-----------------------|----------|
| ● Robbery | 0 |
| ● Aggravated Assault | 1 |
| ● Rape | 0 |
| ● Burglary | 0 |
| ● Theft from Auto | 0 |
| ● Theft from Yard | 0 |
| ● Theft from Building | 1 |
| ● Shoplifting | 1 |
| ● Other Larceny | 0 |
| ● Auto Theft | 0 |
| ● Snatching/PickPkt | 0 |
| Total | 1 |

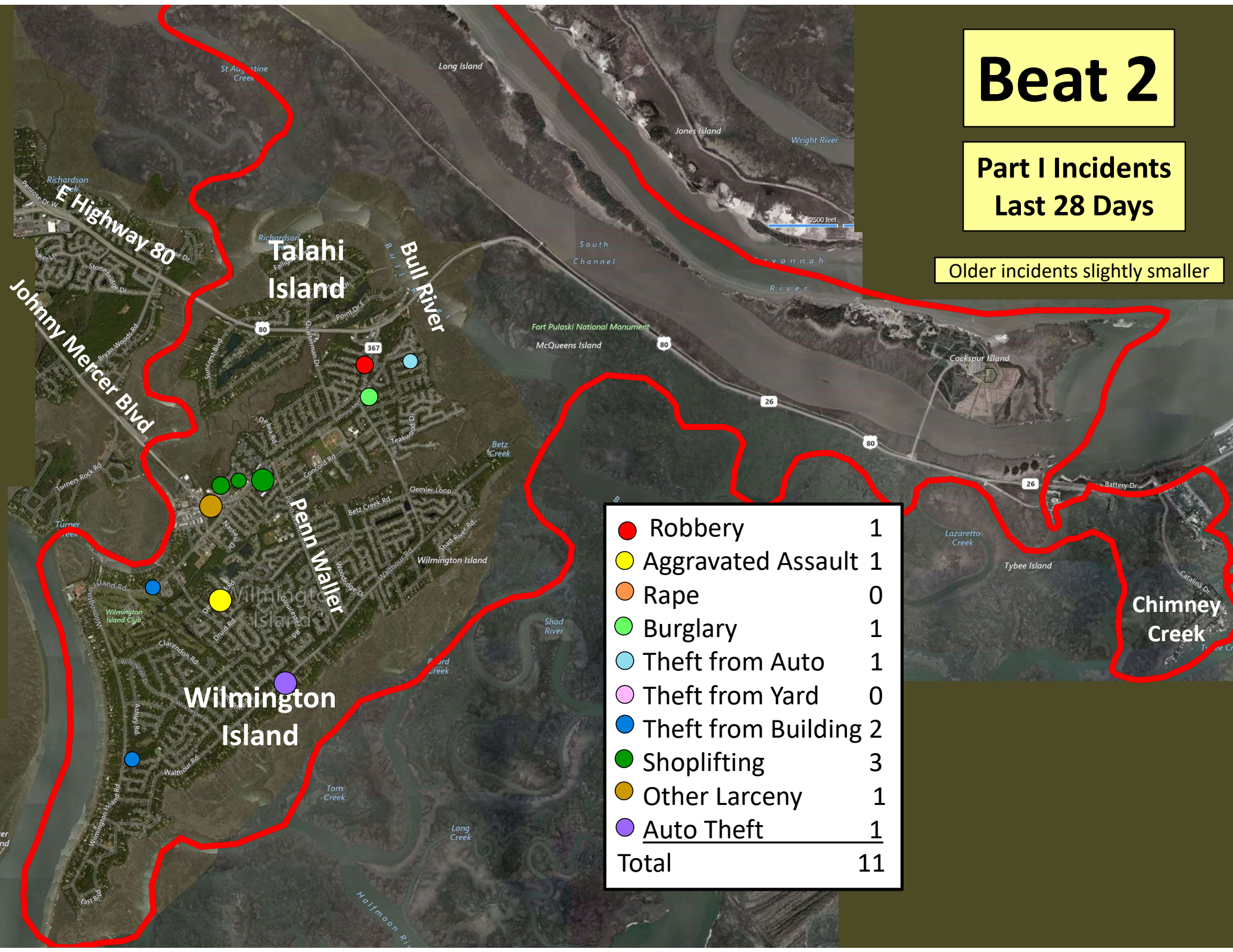
Older incidents slightly smaller



Beat 2

Part I Incidents
Last 28 Days

Older incidents slightly smaller

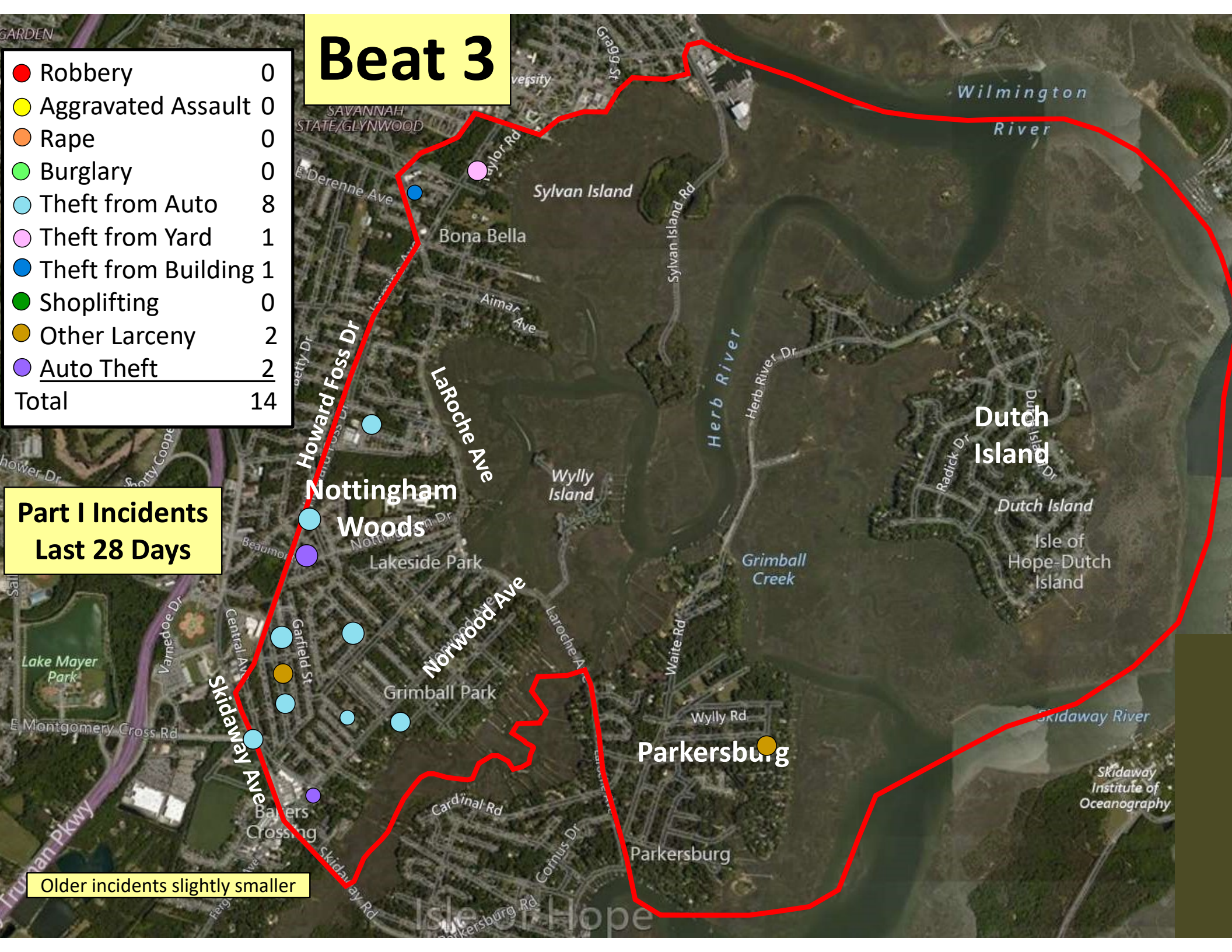


| | |
|-----------------------|-----------|
| ● Robbery | 1 |
| ● Aggravated Assault | 1 |
| ● Rape | 0 |
| ● Burglary | 1 |
| ● Theft from Auto | 1 |
| ● Theft from Yard | 0 |
| ● Theft from Building | 2 |
| ● Shoplifting | 3 |
| ● Other Larceny | 1 |
| ● Auto Theft | 1 |
| Total | 11 |

Beat 3

| | |
|-----------------------|-----------|
| ● Robbery | 0 |
| ● Aggravated Assault | 0 |
| ● Rape | 0 |
| ● Burglary | 0 |
| ● Theft from Auto | 8 |
| ● Theft from Yard | 1 |
| ● Theft from Building | 1 |
| ● Shoplifting | 0 |
| ● Other Larceny | 2 |
| ● Auto Theft | 2 |
| Total | 14 |

Part I Incidents Last 28 Days



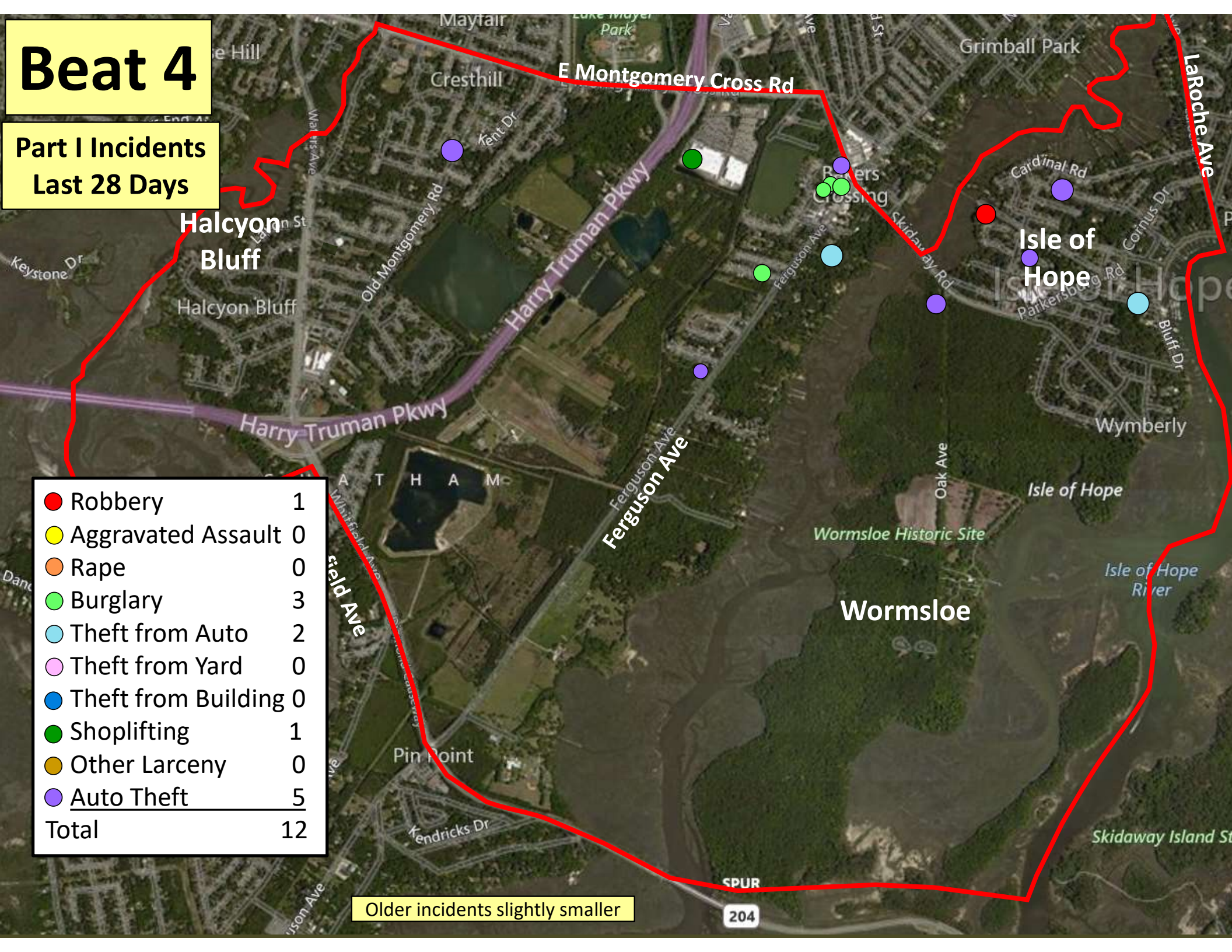
Older incidents slightly smaller

Beat 4

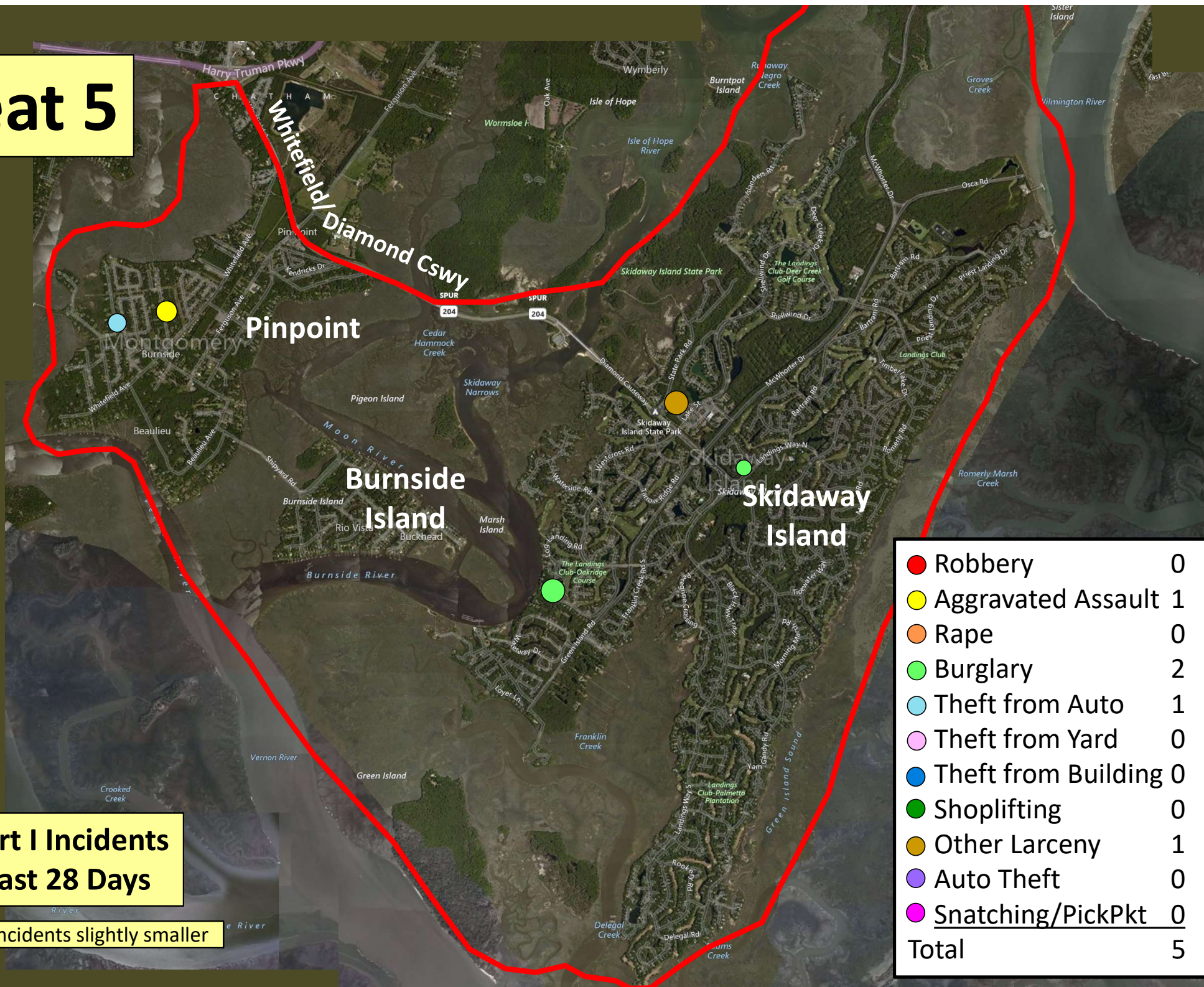
Part I Incidents
Last 28 Days

| | |
|-----------------------|-----------|
| ● Robbery | 1 |
| ● Aggravated Assault | 0 |
| ● Rape | 0 |
| ● Burglary | 3 |
| ● Theft from Auto | 2 |
| ● Theft from Yard | 0 |
| ● Theft from Building | 0 |
| ● Shoplifting | 1 |
| ● Other Larceny | 0 |
| ● Auto Theft | 5 |
| Total | 12 |

Older incidents slightly smaller



Beat 5



Part I Incidents
Last 28 Days

Older incidents slightly smaller

Beat 6

Part I Incidents
Last 28 Days

| | |
|-----------------------|----------|
| ● Robbery | 0 |
| ● Aggravated Assault | 0 |
| ● Rape | 0 |
| ● Burglary | 0 |
| ● Theft from Auto | 0 |
| ● Theft from Yard | 1 |
| ● Theft from Building | 0 |
| ● Shoplifting | 0 |
| ● Other Larceny | 0 |
| ● Auto Theft | 0 |
| ● Snatching/PickPkt | 0 |
| Total | 1 |

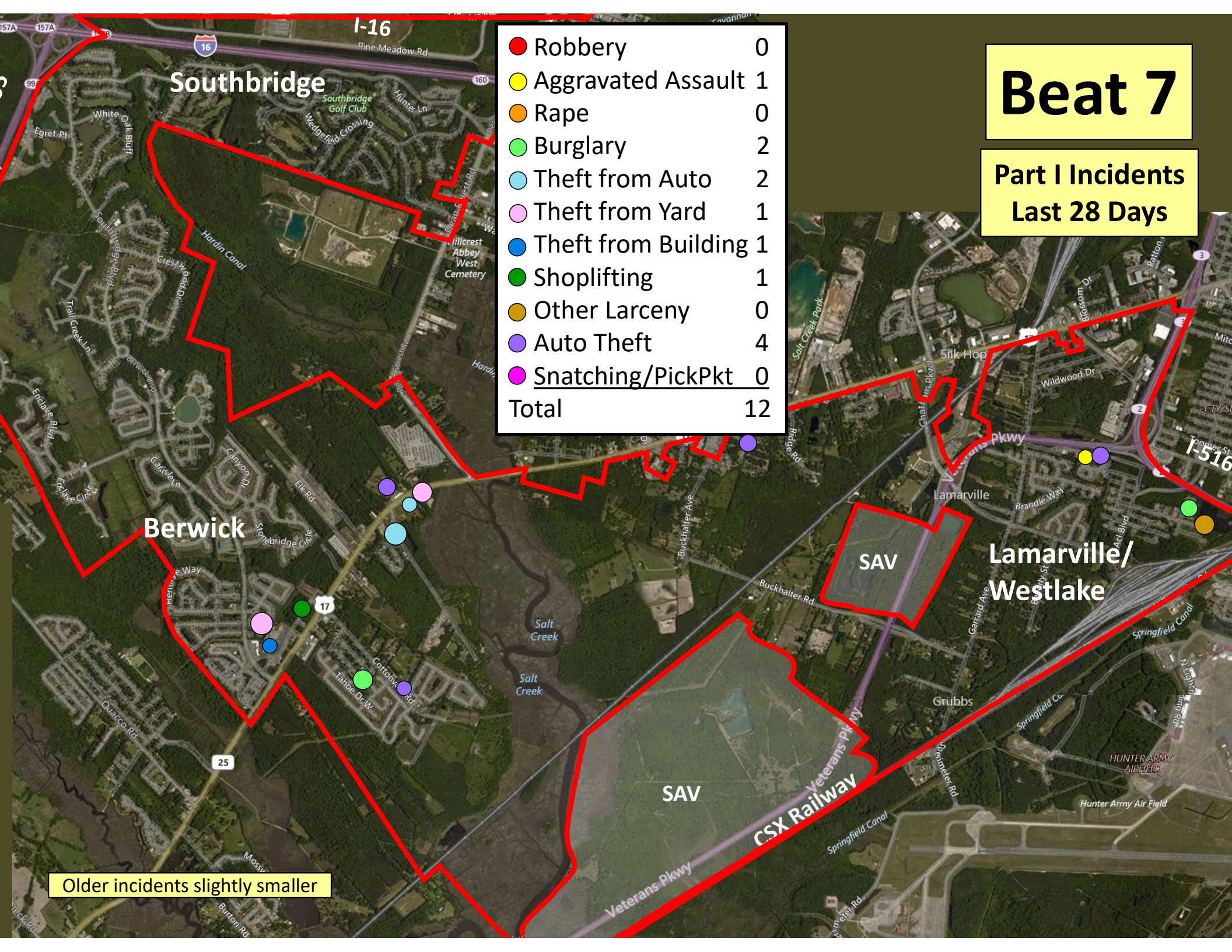
Older incidents slightly smaller



Beat 7

Part I Incidents
Last 28 Days

| | |
|-----------------------|-----------|
| ● Robbery | 0 |
| ● Aggravated Assault | 1 |
| ● Rape | 0 |
| ● Burglary | 2 |
| ● Theft from Auto | 2 |
| ● Theft from Yard | 1 |
| ● Theft from Building | 1 |
| ● Shoplifting | 1 |
| ● Other Larceny | 0 |
| ● Auto Theft | 4 |
| ● Snatching/PickPkt | 0 |
| Total | 12 |

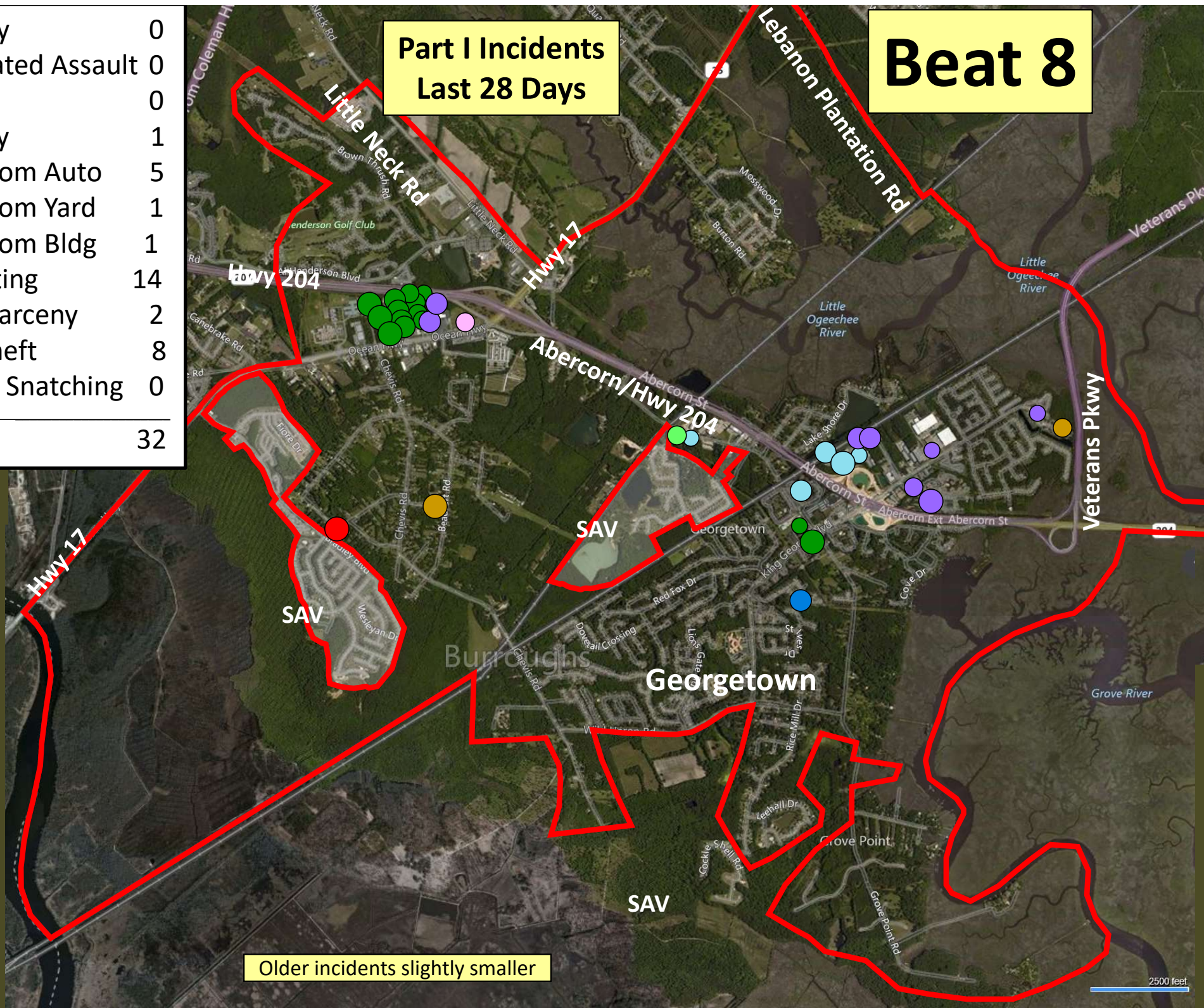


Older incidents slightly smaller

Beat 8

Part I Incidents Last 28 Days

| | |
|----------------------|-----------|
| ● Robbery | 0 |
| ● Aggravated Assault | 0 |
| ● Rape | 0 |
| ● Burglary | 1 |
| ● Theft from Auto | 5 |
| ● Theft from Yard | 1 |
| ● Theft from Bldg | 1 |
| ● Shoplifting | 14 |
| ● Other Larceny | 2 |
| ● Auto Theft | 8 |
| ● Sudden Snatching | 0 |
| Total | 32 |

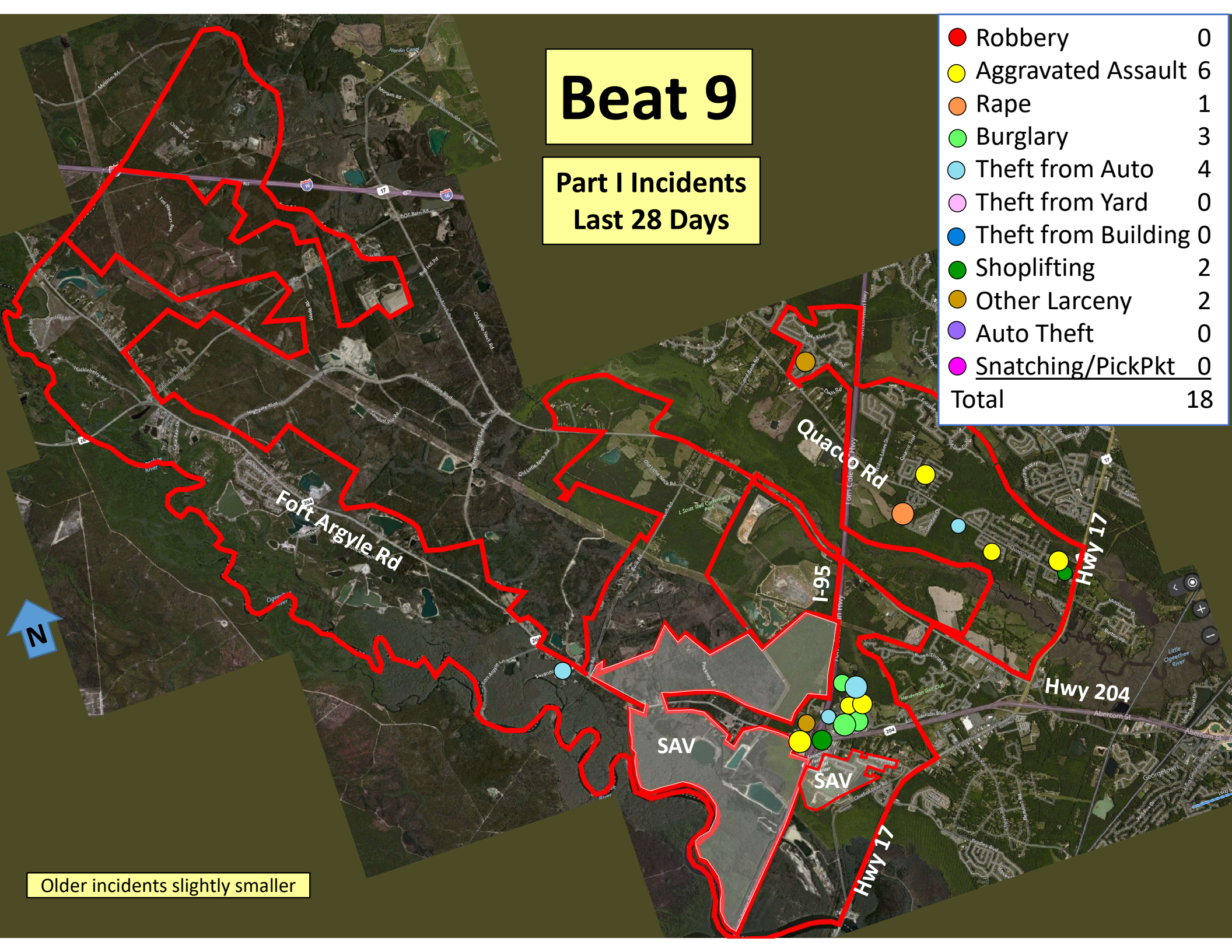


Older incidents slightly smaller

Beat 9

Part I Incidents
Last 28 Days

| | |
|-----------------------|-----------|
| ● Robbery | 0 |
| ● Aggravated Assault | 6 |
| ● Rape | 1 |
| ● Burglary | 3 |
| ● Theft from Auto | 4 |
| ● Theft from Yard | 0 |
| ● Theft from Building | 0 |
| ● Shoplifting | 2 |
| ● Other Larceny | 2 |
| ● Auto Theft | 0 |
| ● Snatching/PickPkt | 0 |
| Total | 18 |



Older incidents slightly smaller