

# Beat 1

## Part I Incidents Last 28 Days

● Robbery	0
● Aggravated Assault	2
● Rape	0
● Burglary	4
● Theft from Auto	2
● Theft from Yard	0
● Theft from Building	1
● Shoplifting	1
● Other Larceny	4
● Auto Theft	0
● Snatching/PickPkt	0
<b>Total</b>	<b>14</b>

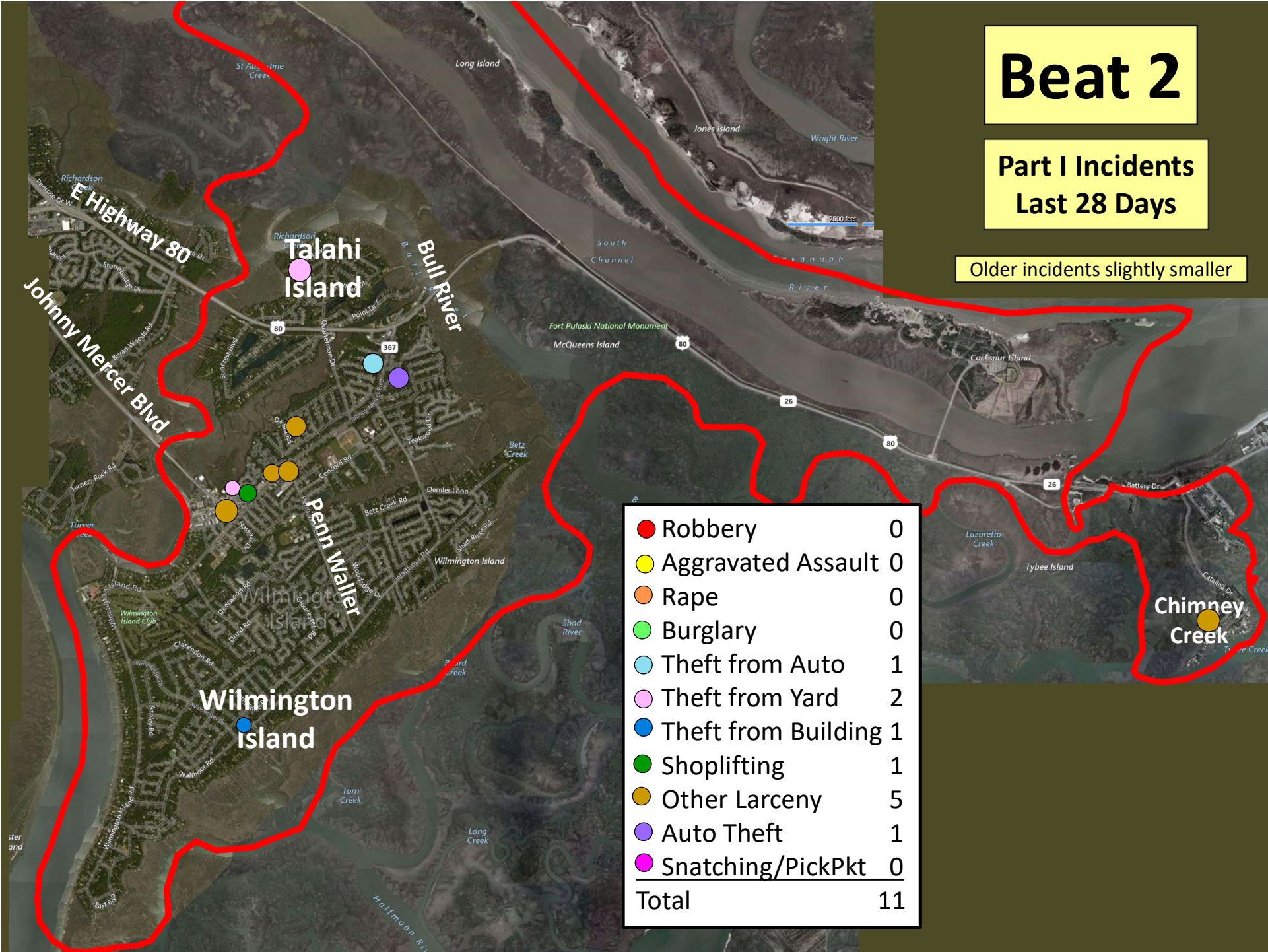
Older incidents slightly smaller



# Beat 2

Part I Incidents  
Last 28 Days

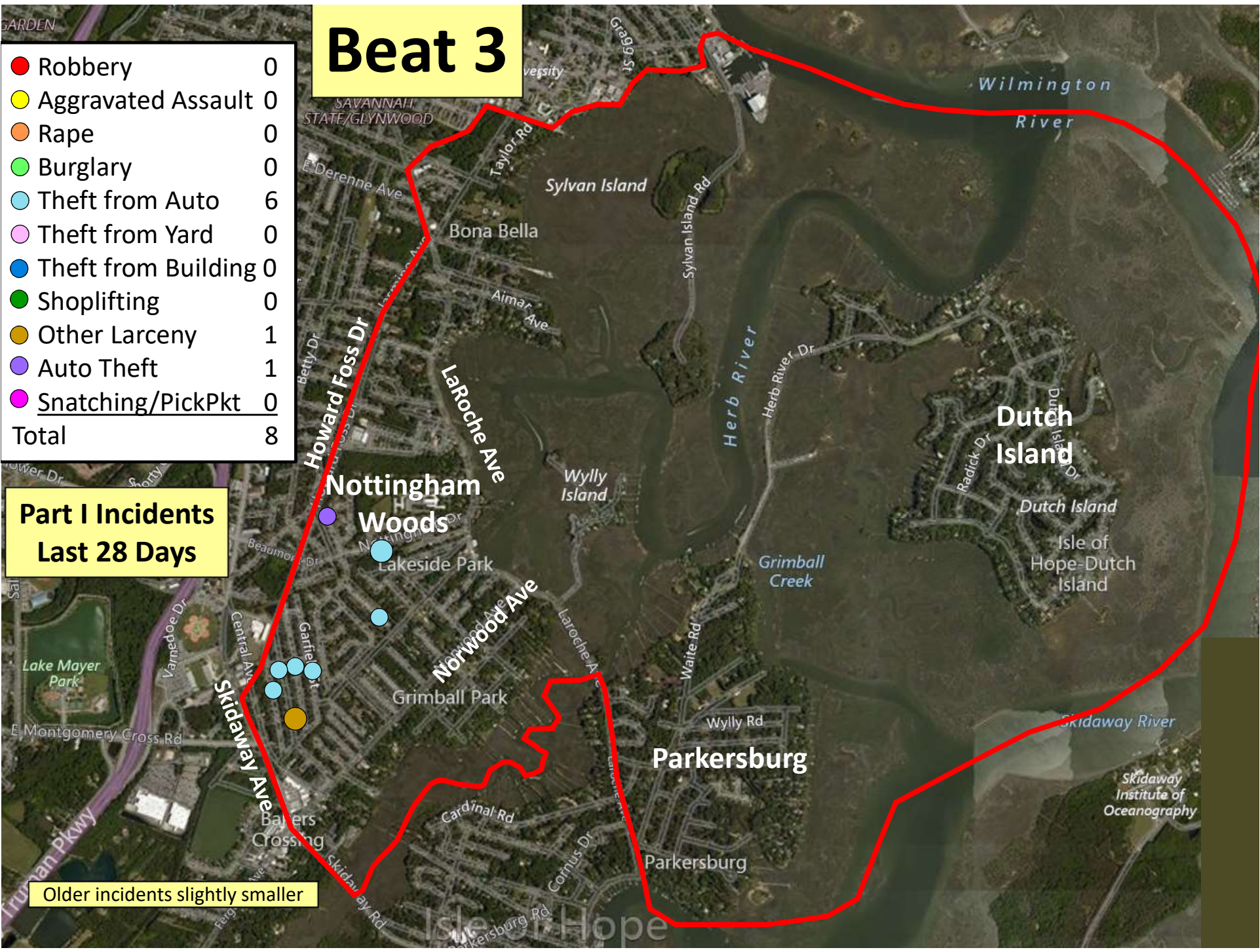
Older incidents slightly smaller



# Beat 3

● Robbery	0
● Aggravated Assault	0
● Rape	0
● Burglary	0
● Theft from Auto	6
● Theft from Yard	0
● Theft from Building	0
● Shoplifting	0
● Other Larceny	1
● Auto Theft	1
● Snatching/PickPkt	0
<b>Total</b>	<b>8</b>

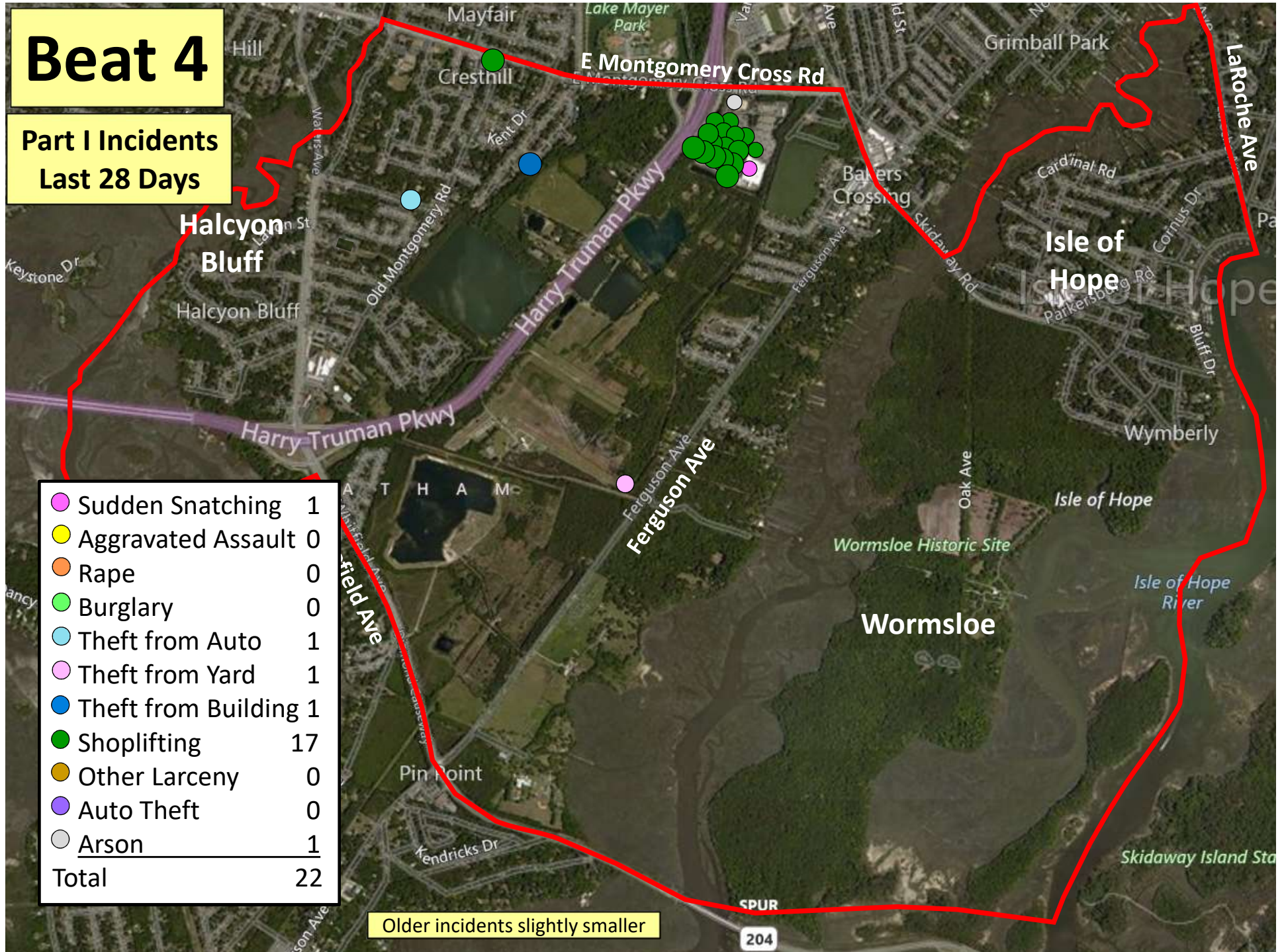
## Part I Incidents Last 28 Days



Older incidents slightly smaller

# Beat 4

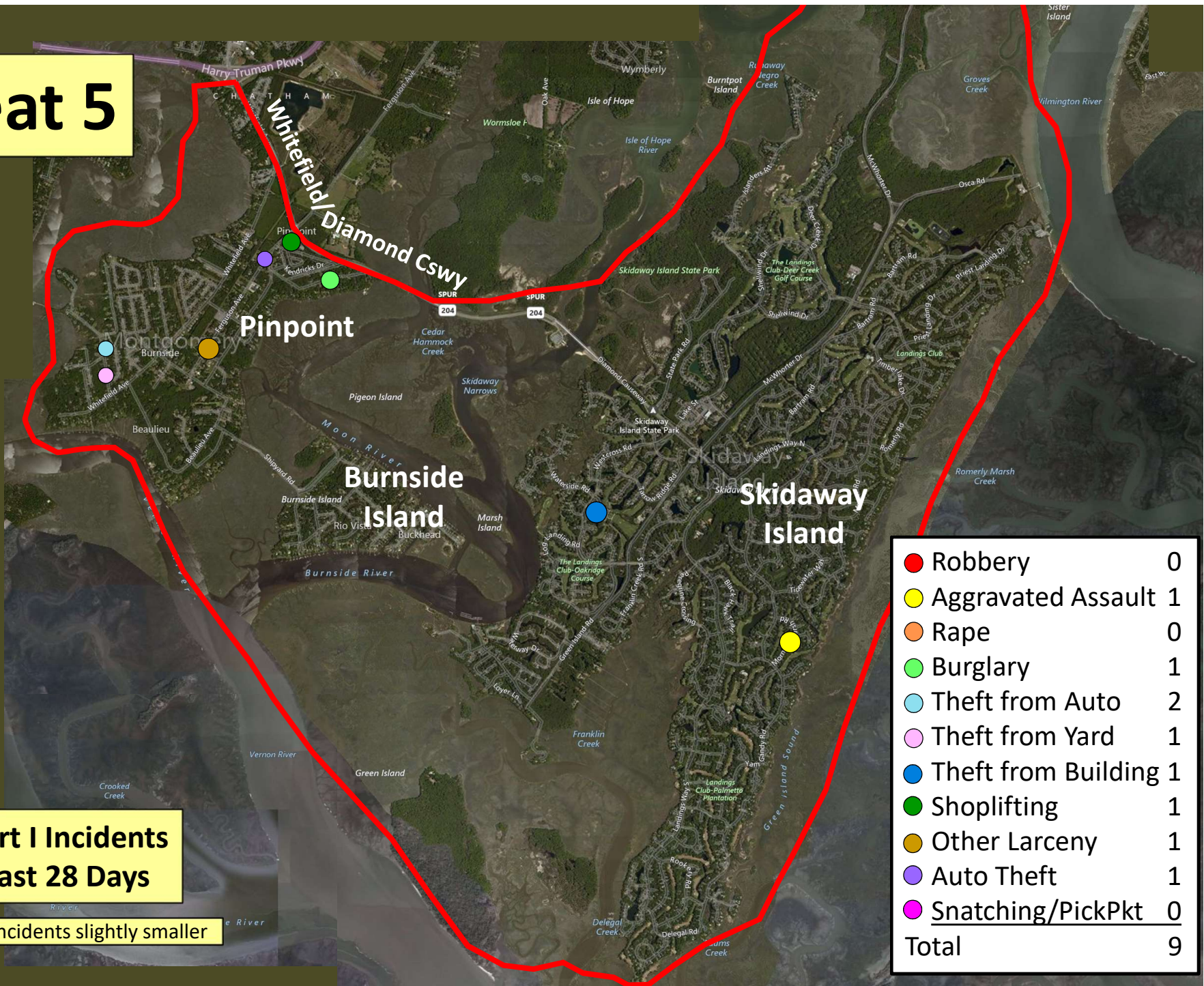
Part I Incidents  
Last 28 Days



● Sudden Snatching	1
● Aggravated Assault	0
● Rape	0
● Burglary	0
● Theft from Auto	1
● Theft from Yard	1
● Theft from Building	1
● Shoplifting	17
● Other Larceny	0
● Auto Theft	0
● Arson	1
<b>Total</b>	<b>22</b>

Older incidents slightly smaller

# Beat 5



**Part I Incidents  
Last 28 Days**

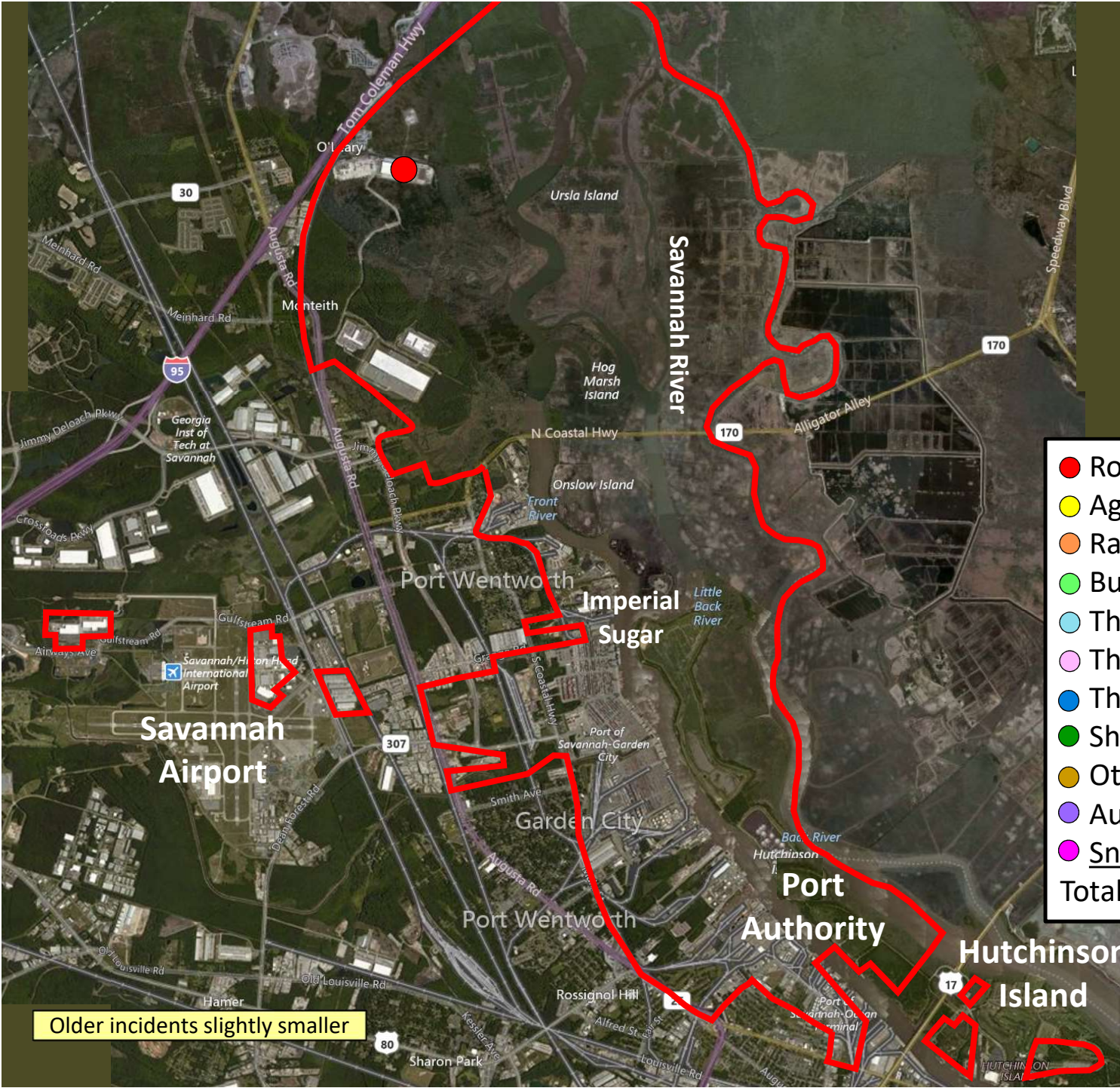
Older incidents slightly smaller

● Robbery	0
● Aggravated Assault	1
● Rape	0
● Burglary	1
● Theft from Auto	2
● Theft from Yard	1
● Theft from Building	1
● Shoplifting	1
● Other Larceny	1
● Auto Theft	1
● Snatching/PickPkt	0
<b>Total</b>	<b>9</b>

# Beat 6

Part I Incidents  
Last 28 Days

● Robbery	1
● Aggravated Assault	0
● Rape	0
● Burglary	0
● Theft from Auto	0
● Theft from Yard	0
● Theft from Building	0
● Shoplifting	0
● Other Larceny	0
● Auto Theft	0
● Snatching/PickPkt	0
Total	1

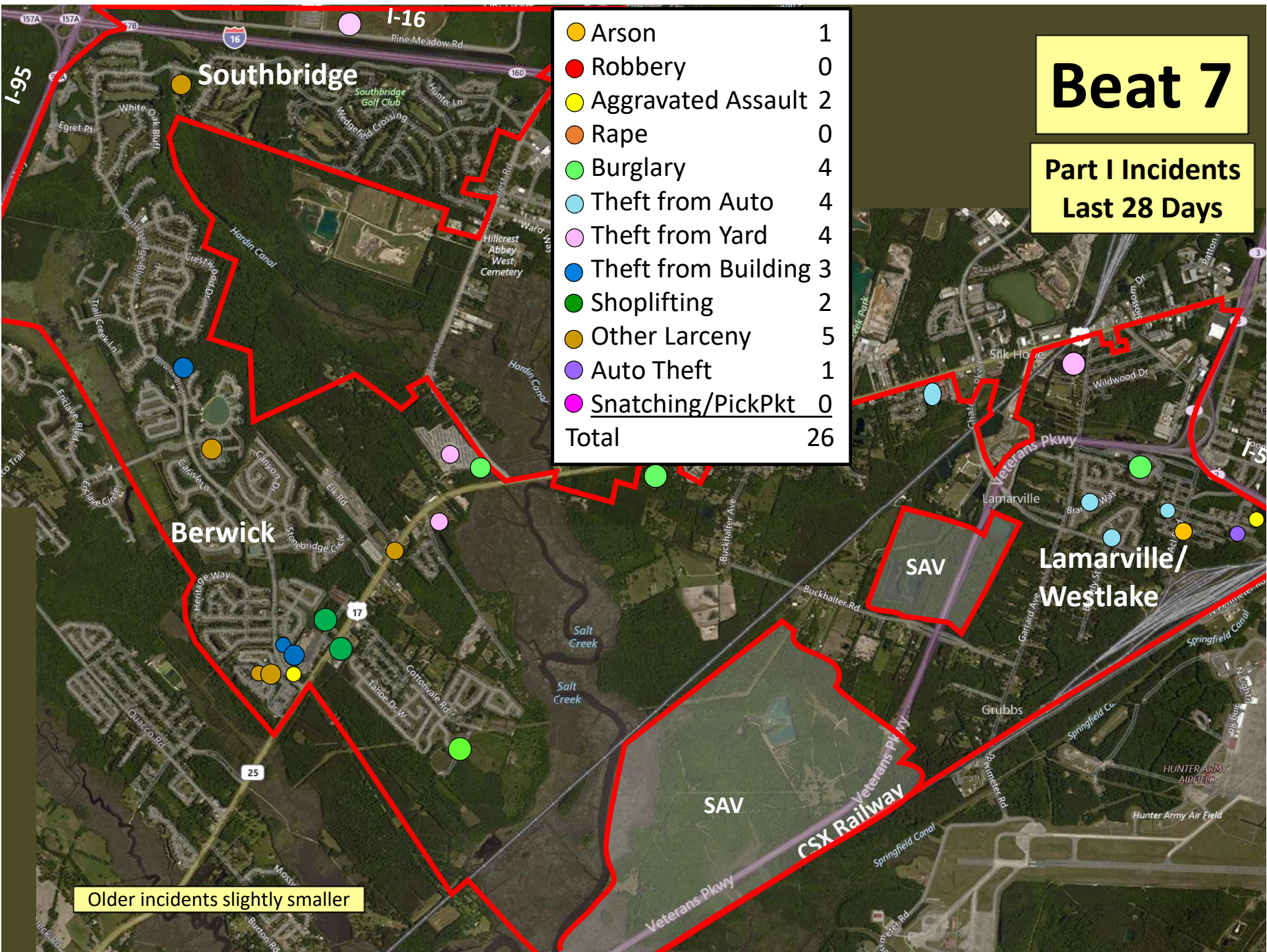


Older incidents slightly smaller

# Beat 7

Part I Incidents  
Last 28 Days

Arson	1
Robbery	0
Aggravated Assault	2
Rape	0
Burglary	4
Theft from Auto	4
Theft from Yard	4
Theft from Building	3
Shoplifting	2
Other Larceny	5
Auto Theft	1
Snatching/PickPkt	0
<b>Total</b>	<b>26</b>

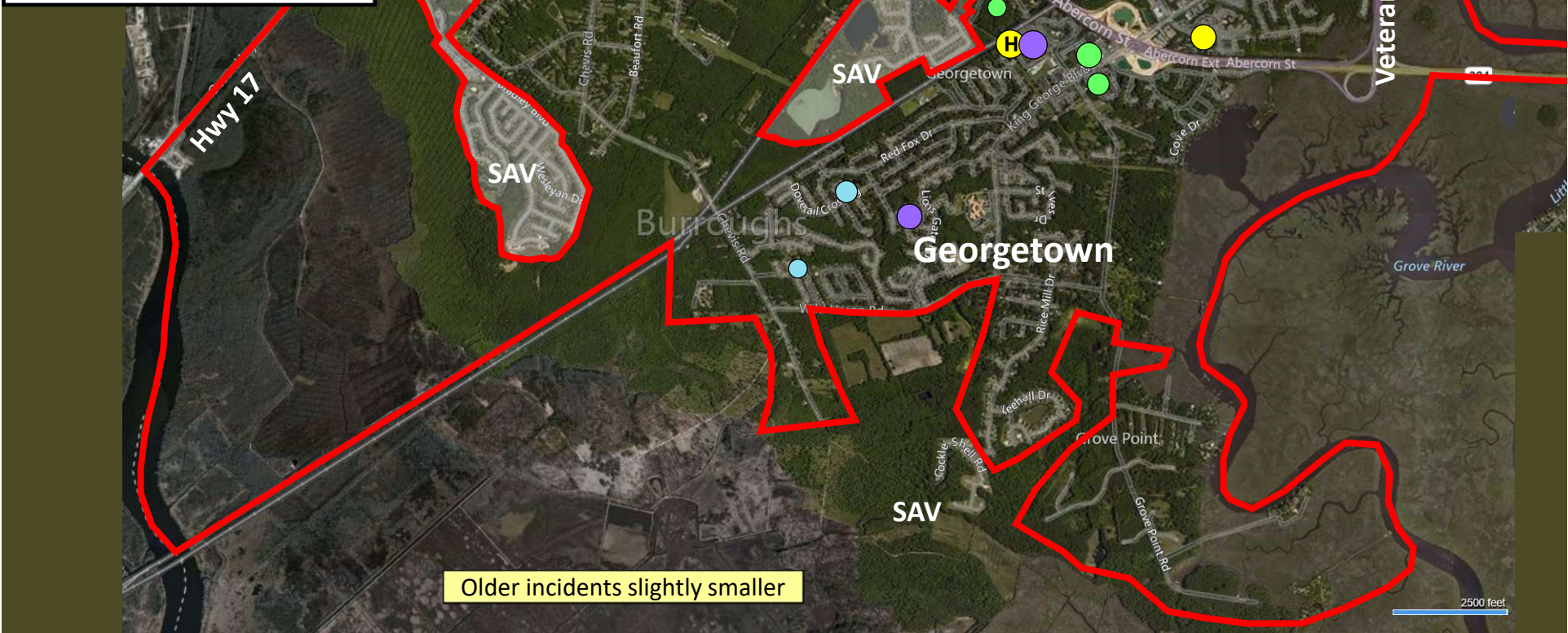


Older incidents slightly smaller

● Robbery	1
● Aggravated Assault	1
Ⓜ Homicide	1
● Burglary	3
● Theft from Auto	5
● Theft from Yard	0
● Theft from Bldg	0
● Shoplifting	14
● Other Larceny	0
● Auto Theft	2
● Sudden Snatching	0
<b>Total</b>	<b>27</b>

**Part I Incidents  
Last 28 Days**

**Beat 8**



Older incidents slightly smaller

2500 feet



# Beat 9

Part I Incidents  
Last 28 Days

● Robbery	0
● Aggravated Assault	5
● Rape	0
● Burglary	5
● Theft from Auto	6
● Theft from Yard	4
● Theft from Building	2
● Shoplifting	0
● Other Larceny	1
● Auto Theft	3
● Snatching/PickPkt	0
<b>Total</b>	<b>26</b>



Older incidents slightly smaller