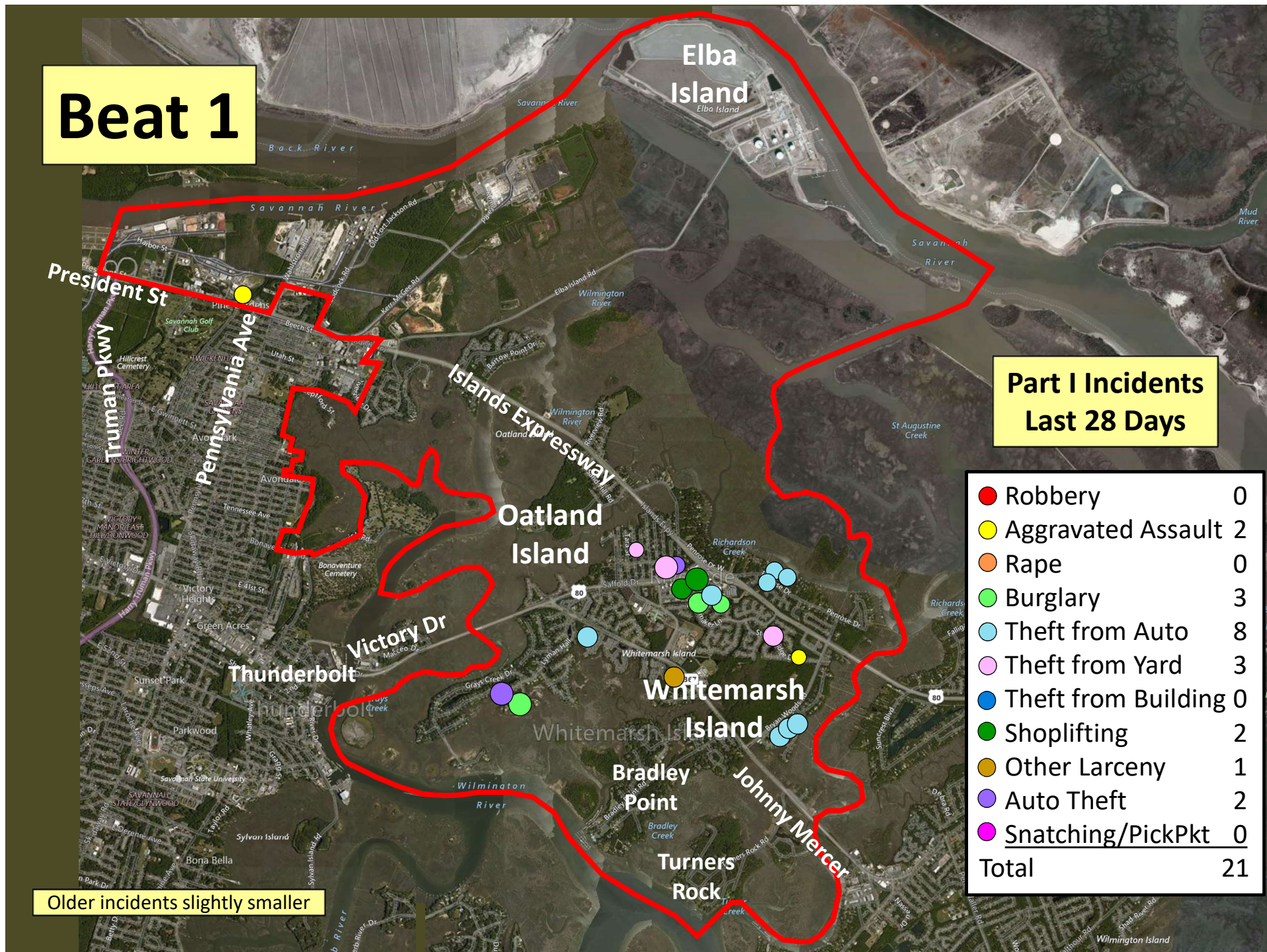


Beat 1

Part I Incidents Last 28 Days

● Robbery	0
● Aggravated Assault	2
● Rape	0
● Burglary	3
● Theft from Auto	8
● Theft from Yard	3
● Theft from Building	0
● Shoplifting	2
● Other Larceny	1
● Auto Theft	2
● Snatching/PickPkt	0
Total	21

Older incidents slightly smaller



Part I Incidents Last 28 Days

Older incidents slightly smaller



Beat 3

● Robbery	0
● Aggravated Assault	0
● Rape	0
● Burglary	0
● Theft from Auto	8
● Theft from Yard	2
● Theft from Building	2
● Shoplifting	0
● Other Larceny	0
● Auto Theft	1
● Snatching/PickPkt	0
Total	13

Part I Incidents Last 28 Days

Older incidents slightly smaller

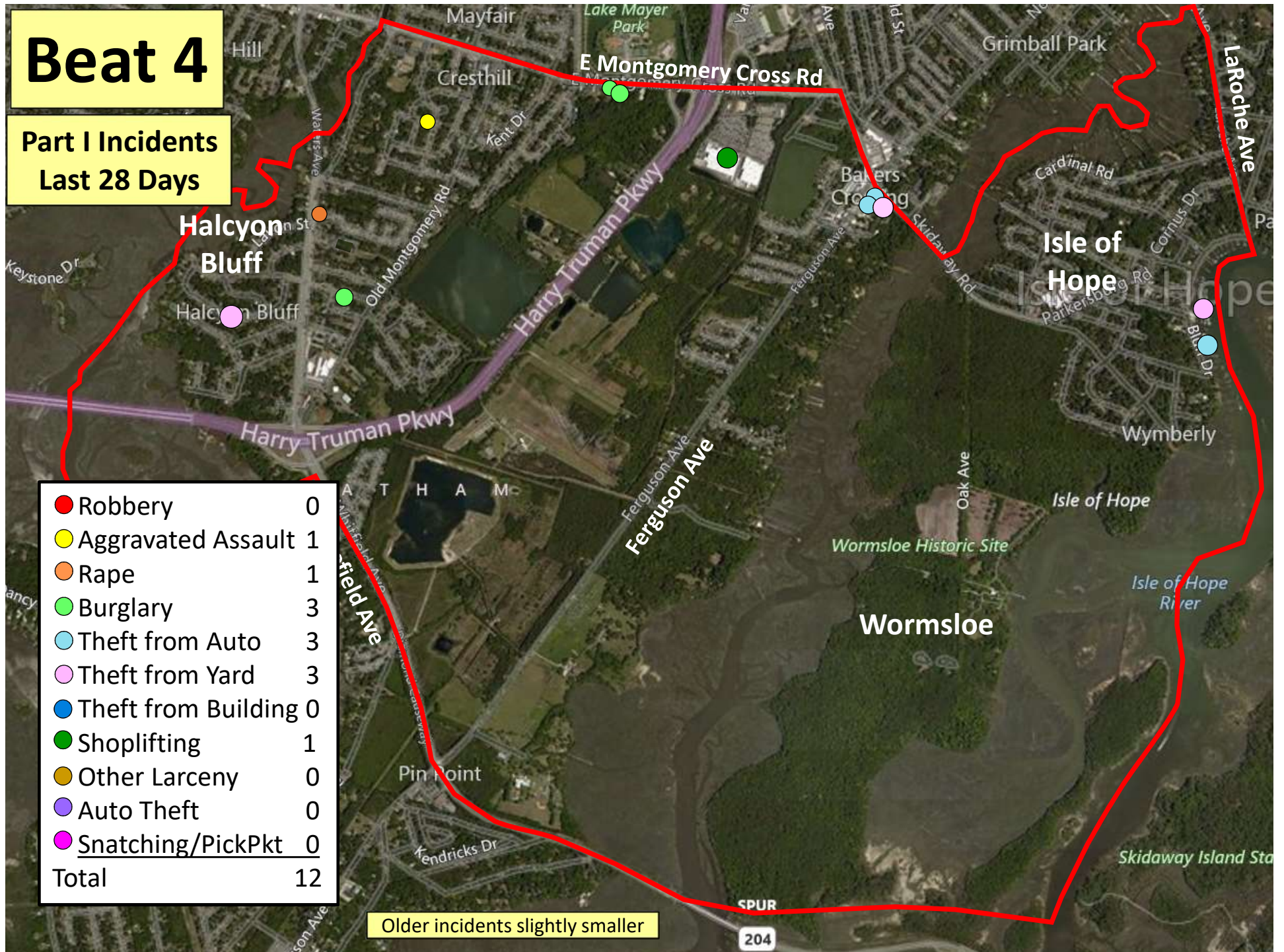


Beat 4

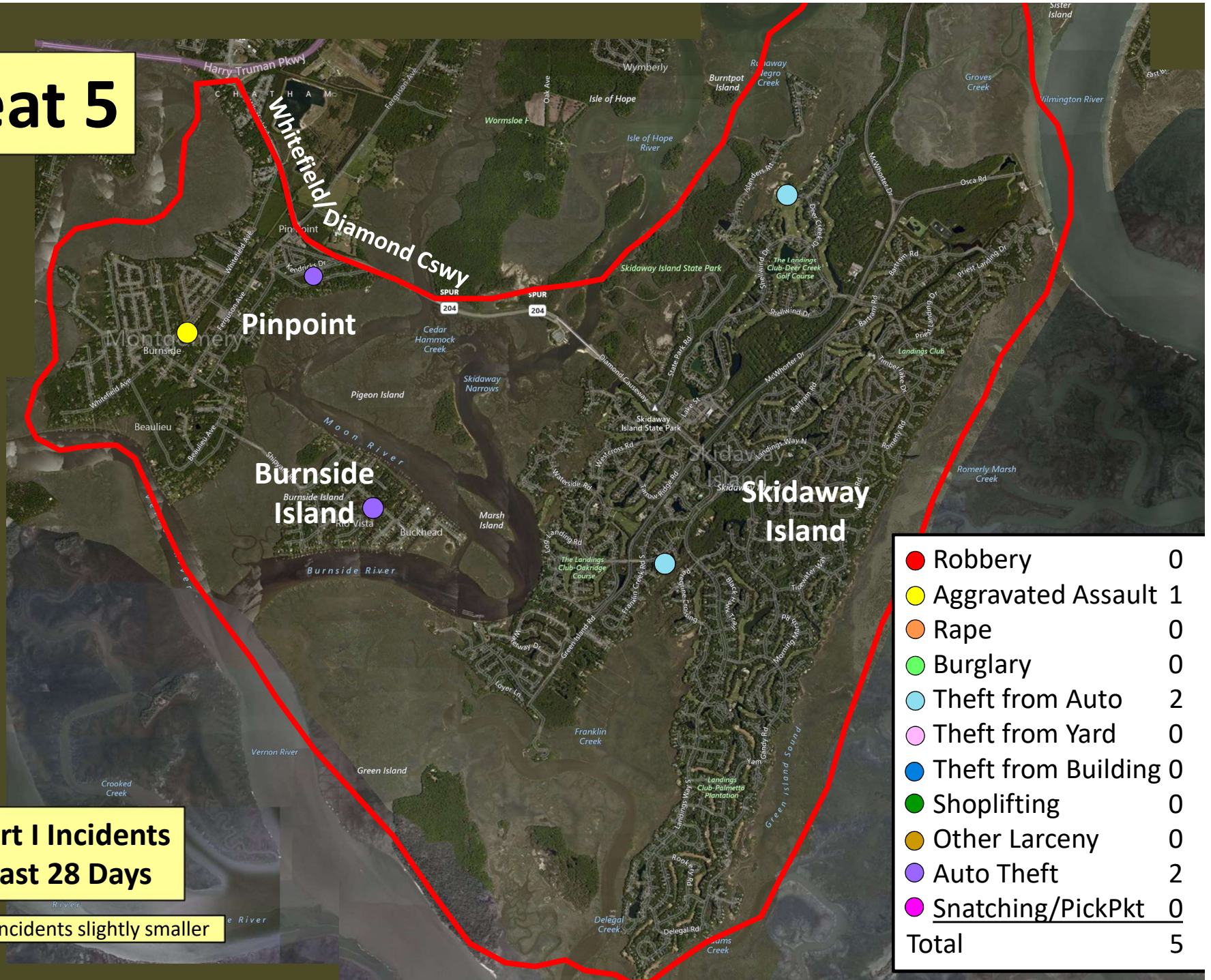
Part I Incidents Last 28 Days

● Robbery	0
● Aggravated Assault	1
● Rape	1
● Burglary	3
● Theft from Auto	3
● Theft from Yard	3
● Theft from Building	0
● Shoplifting	1
● Other Larceny	0
● Auto Theft	0
● Snatching/PickPkt	0
Total	12

Older incidents slightly smaller



Beat 5



**Part I Incidents
Last 28 Days**

Older incidents slightly smaller

● Robbery	0
● Aggravated Assault	1
● Rape	0
● Burglary	0
● Theft from Auto	2
● Theft from Yard	0
● Theft from Building	0
● Shoplifting	0
● Other Larceny	0
● Auto Theft	2
● Snatching/PickPkt	0
Total	5

Beat 6

Part I Incidents
Last 28 Days

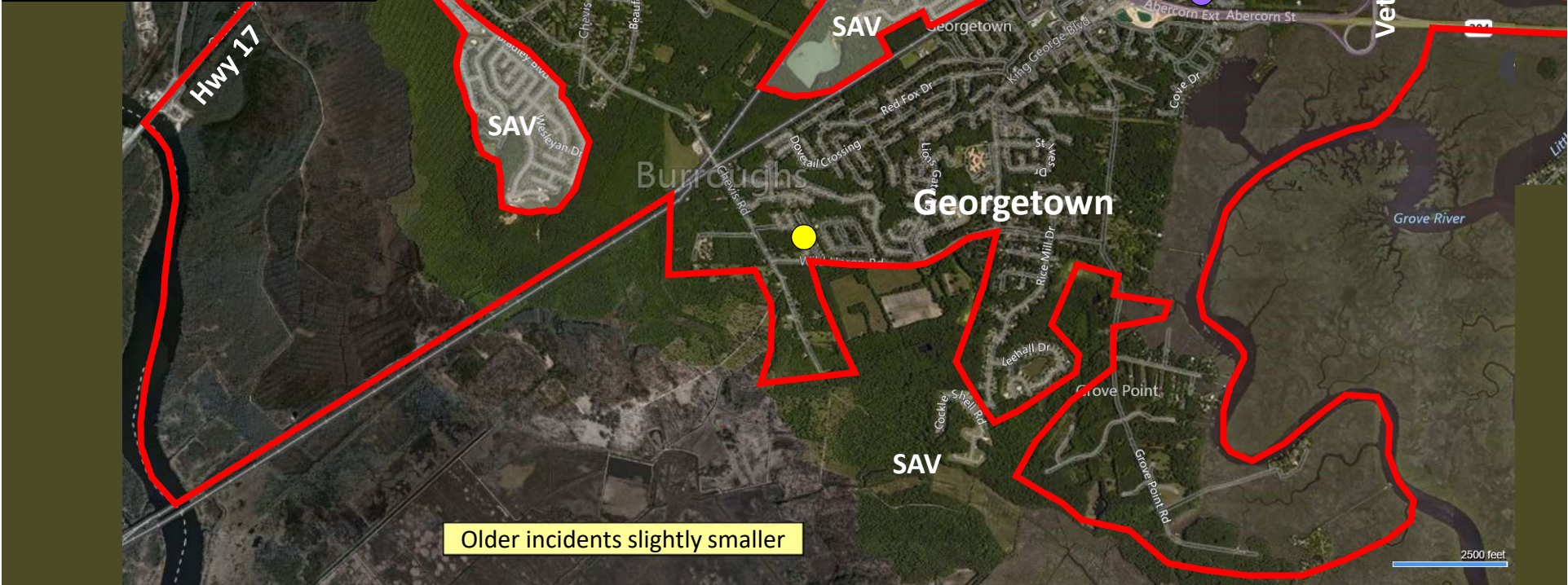
● Robbery	0
● Aggravated Assault	0
● Rape	0
● Burglary	0
● Theft from Auto	0
● Theft from Yard	1
● Theft from Building	0
● Shoplifting	0
● Other Larceny	1
● Auto Theft	0
● Snatching/PickPkt	0
Total	2

Older incidents slightly smaller

Part I Incidents
Last 28 Days

Beat 8

Arson	1
Robbery	0
Aggravated Assault	2
Rape	2
Burglary	4
Theft from Auto	3
Theft from Yard	3
Theft from Bldg	1
Shoplifting	4
Other Larceny	1
Auto Theft	2
Snatching/PickPkt	0
Total	22



Older incidents slightly smaller

Beat 9

Part I Incidents Last 28 Days

Note: The
Enclave
subdivision
is now in
Beat 7

Arson	1
Robbery	0
Aggravated Assault	2
Rape	0
Burglary	1
Theft from Auto	7
Theft from Yard	1
Theft from Building	3
Shoplifting	2
Other Larceny	1
Auto Theft	2
Snatching/PickPkt	0
Total	23

