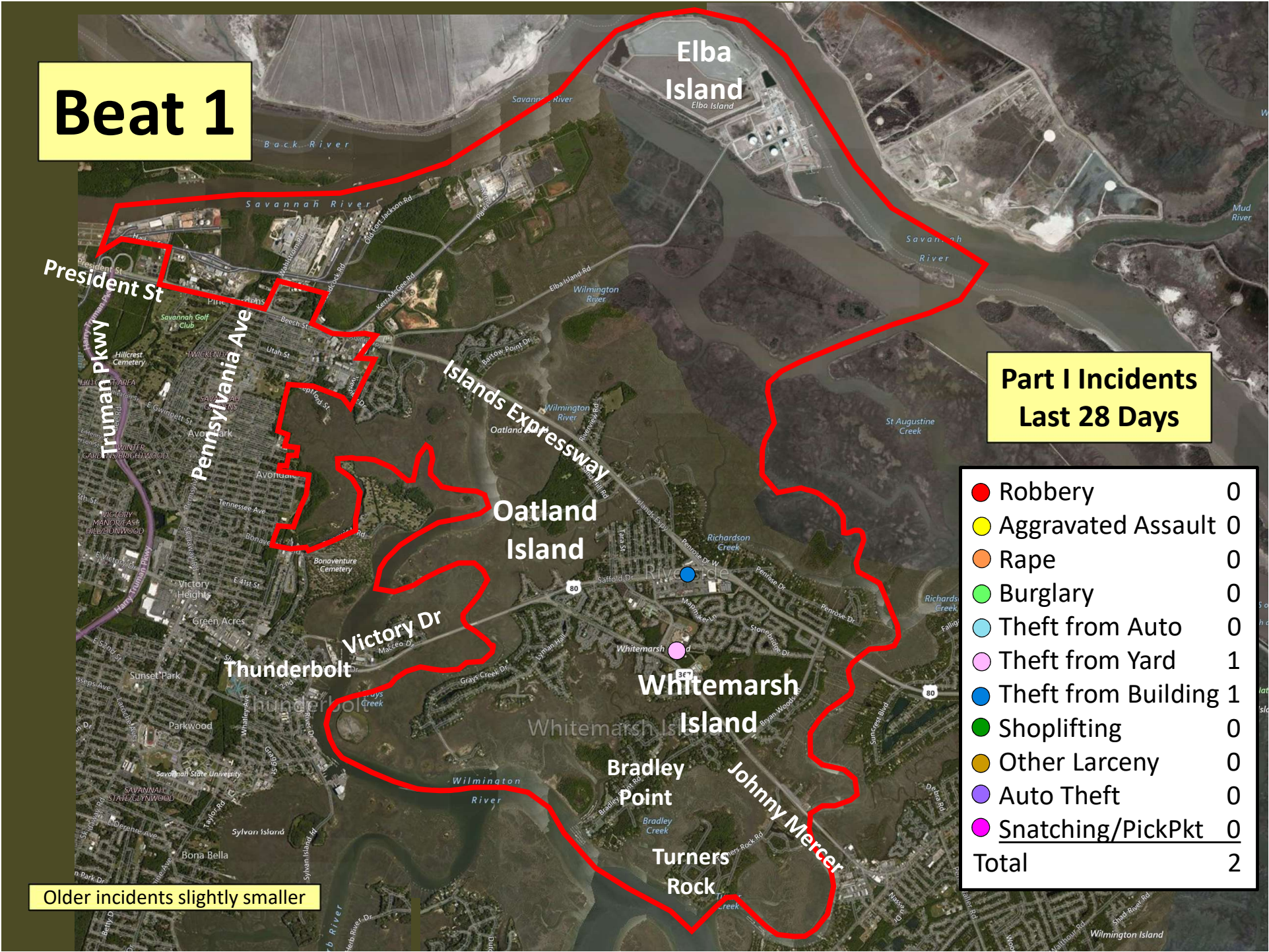


# Beat 1

## Part I Incidents Last 28 Days

● Robbery	0
● Aggravated Assault	0
● Rape	0
● Burglary	0
● Theft from Auto	0
● Theft from Yard	1
● Theft from Building	1
● Shoplifting	0
● Other Larceny	0
● Auto Theft	0
● Snatching/PickPkt	0
<b>Total</b>	<b>2</b>

Older incidents slightly smaller

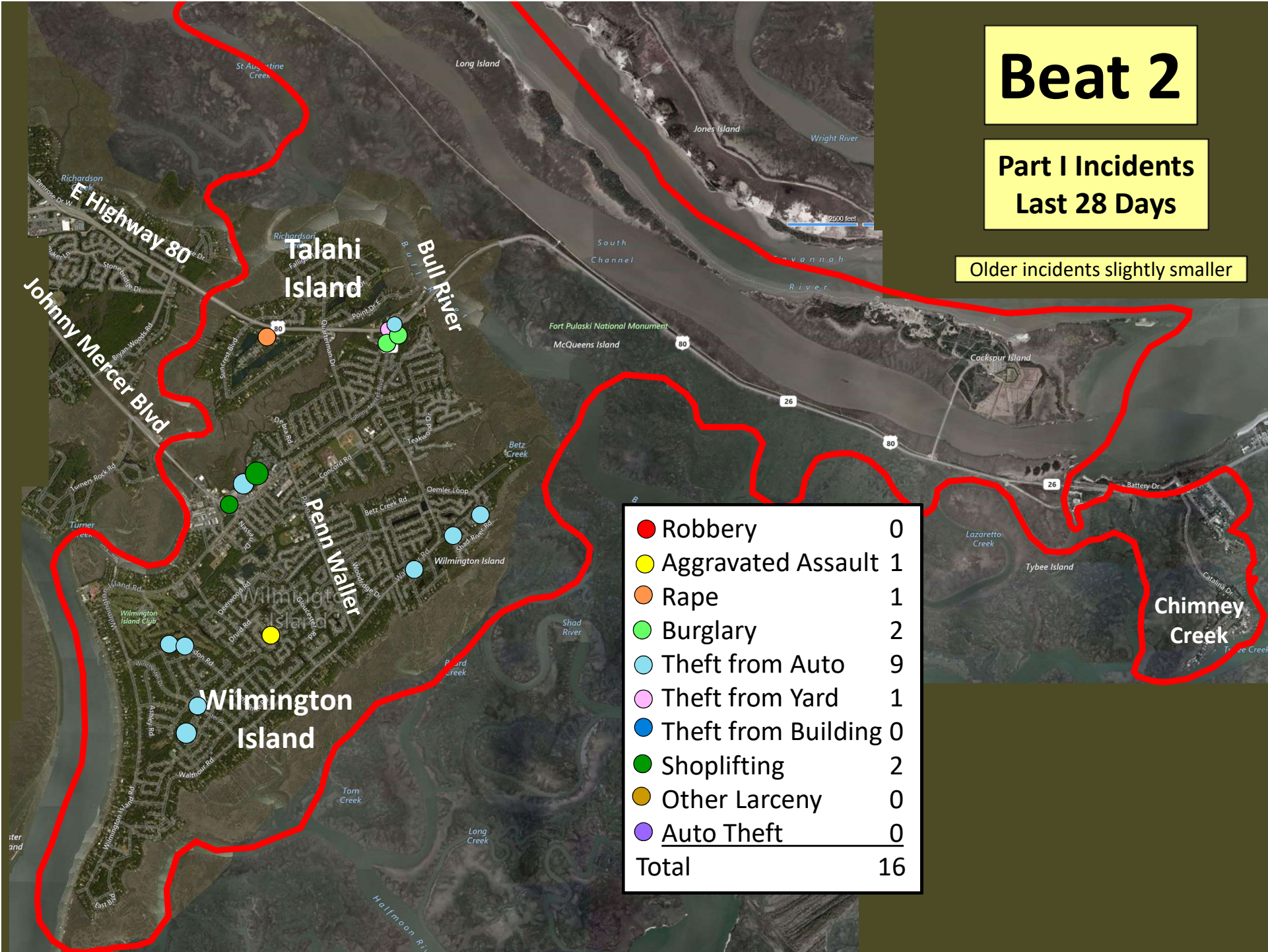




# Beat 2

Part I Incidents  
Last 28 Days

Older incidents slightly smaller

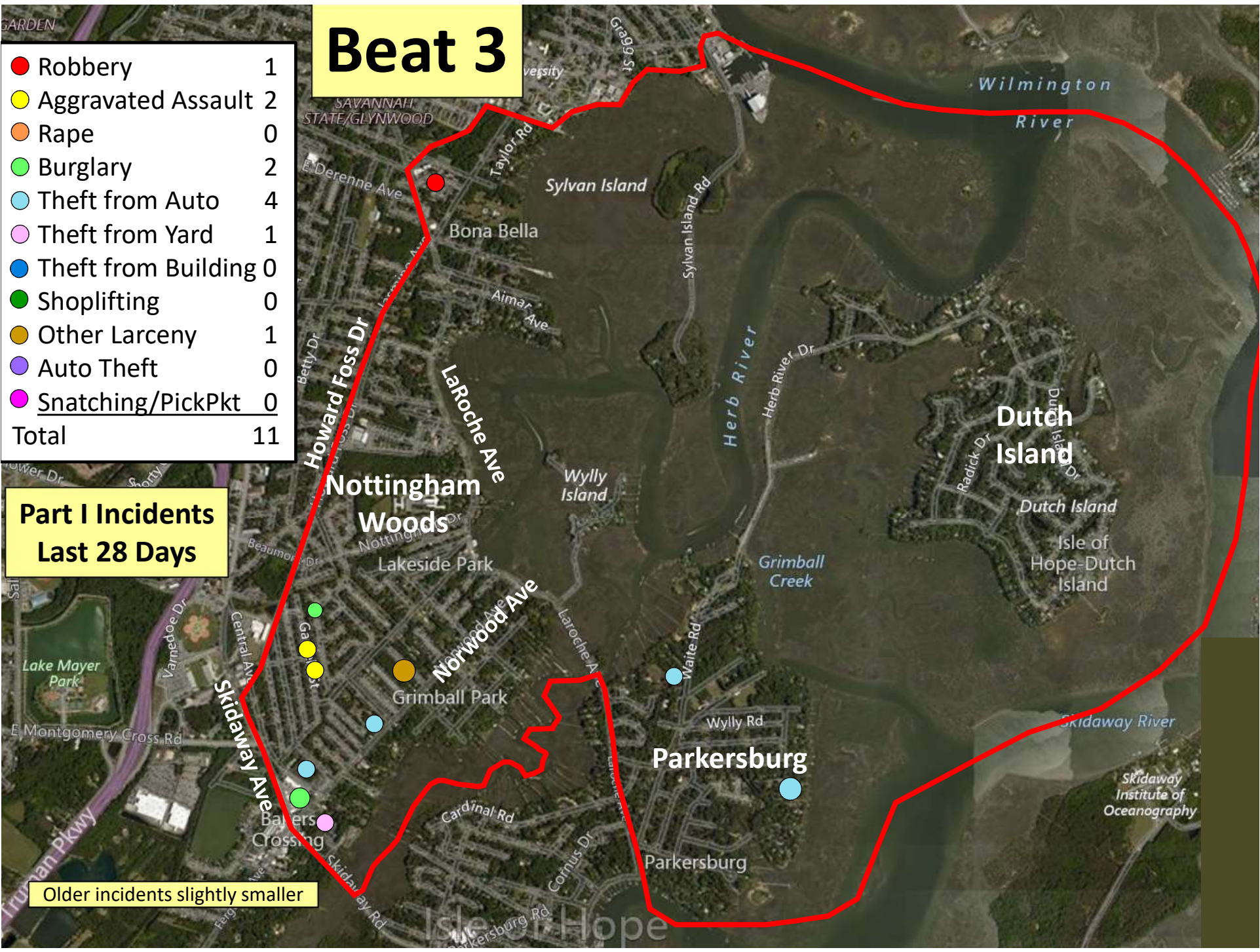




# Beat 3

● Robbery	1
● Aggravated Assault	2
● Rape	0
● Burglary	2
● Theft from Auto	4
● Theft from Yard	1
● Theft from Building	0
● Shoplifting	0
● Other Larceny	1
● Auto Theft	0
● Snatching/PickPkt	0
<b>Total</b>	<b>11</b>

## Part I Incidents Last 28 Days

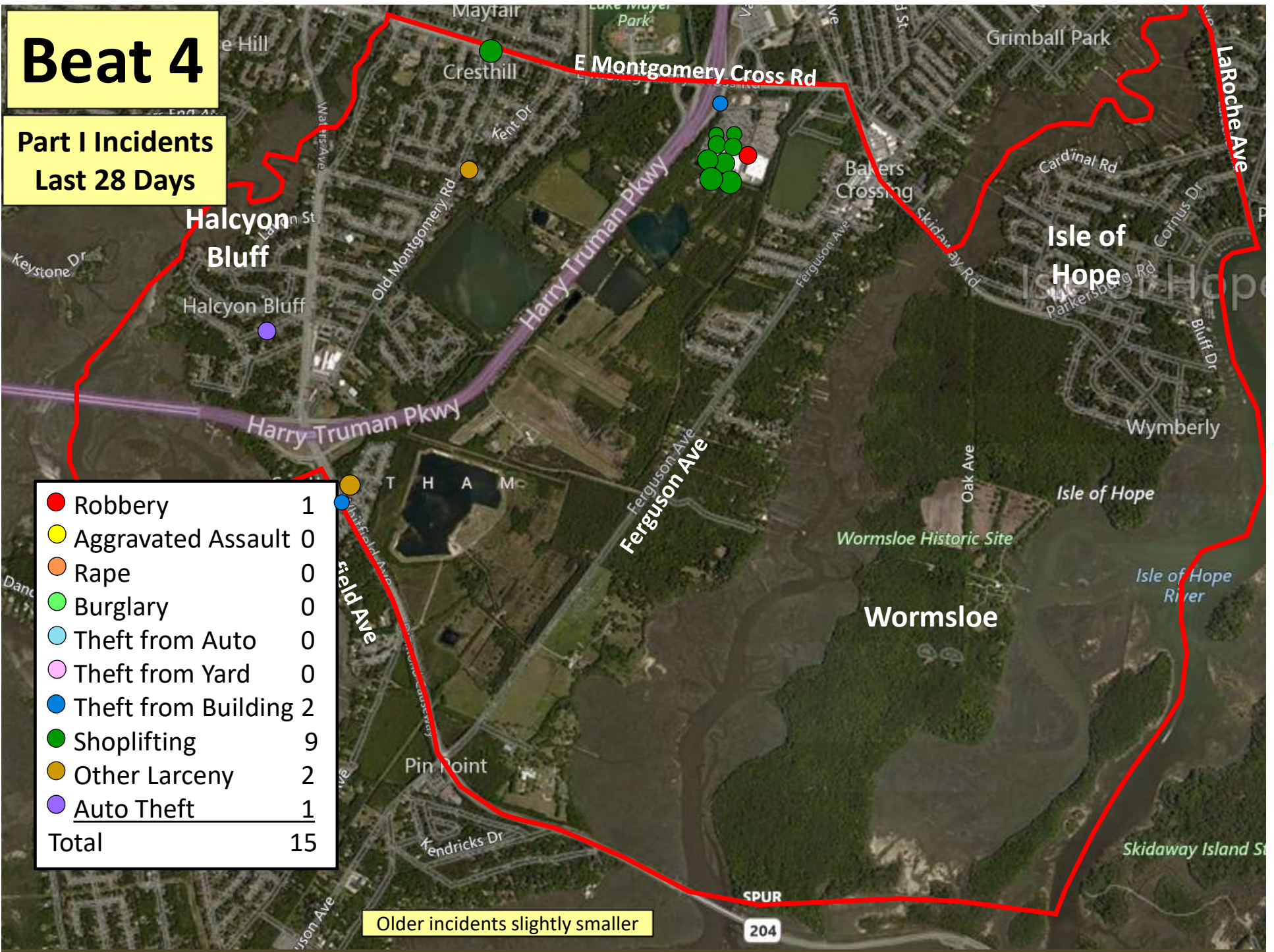


Older incidents slightly smaller



# Beat 4

## Part I Incidents Last 28 Days



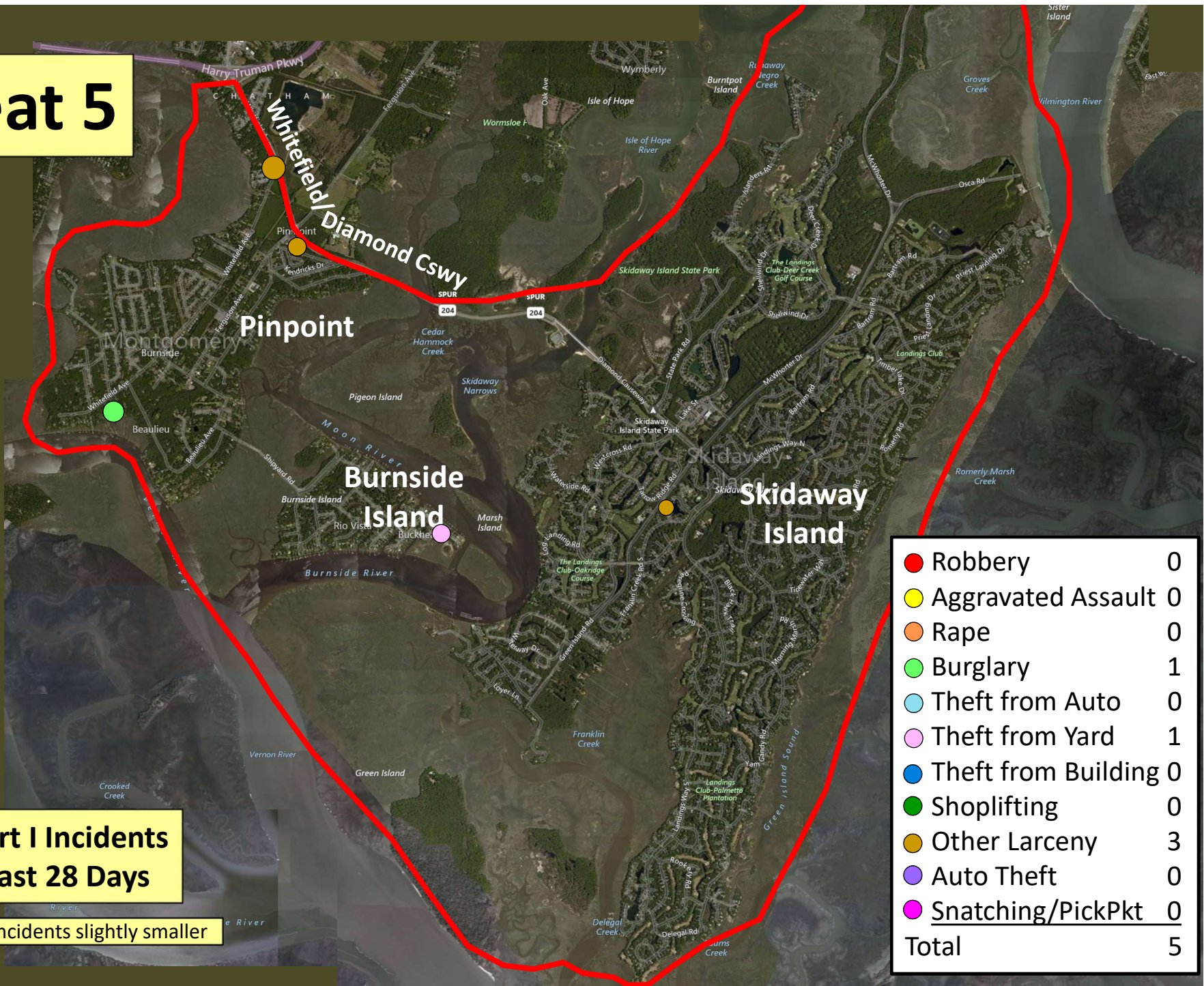
● Robbery	1
● Aggravated Assault	0
● Rape	0
● Burglary	0
● Theft from Auto	0
● Theft from Yard	0
● Theft from Building	2
● Shoplifting	9
● Other Larceny	2
● Auto Theft	1
<b>Total</b>	<b>15</b>

Older incidents slightly smaller

SPUR  
204



# Beat 5



● Robbery	0
● Aggravated Assault	0
● Rape	0
● Burglary	1
● Theft from Auto	0
● Theft from Yard	1
● Theft from Building	0
● Shoplifting	0
● Other Larceny	3
● Auto Theft	0
● Snatching/PickPkt	0
<b>Total</b>	<b>5</b>

**Part I Incidents  
Last 28 Days**

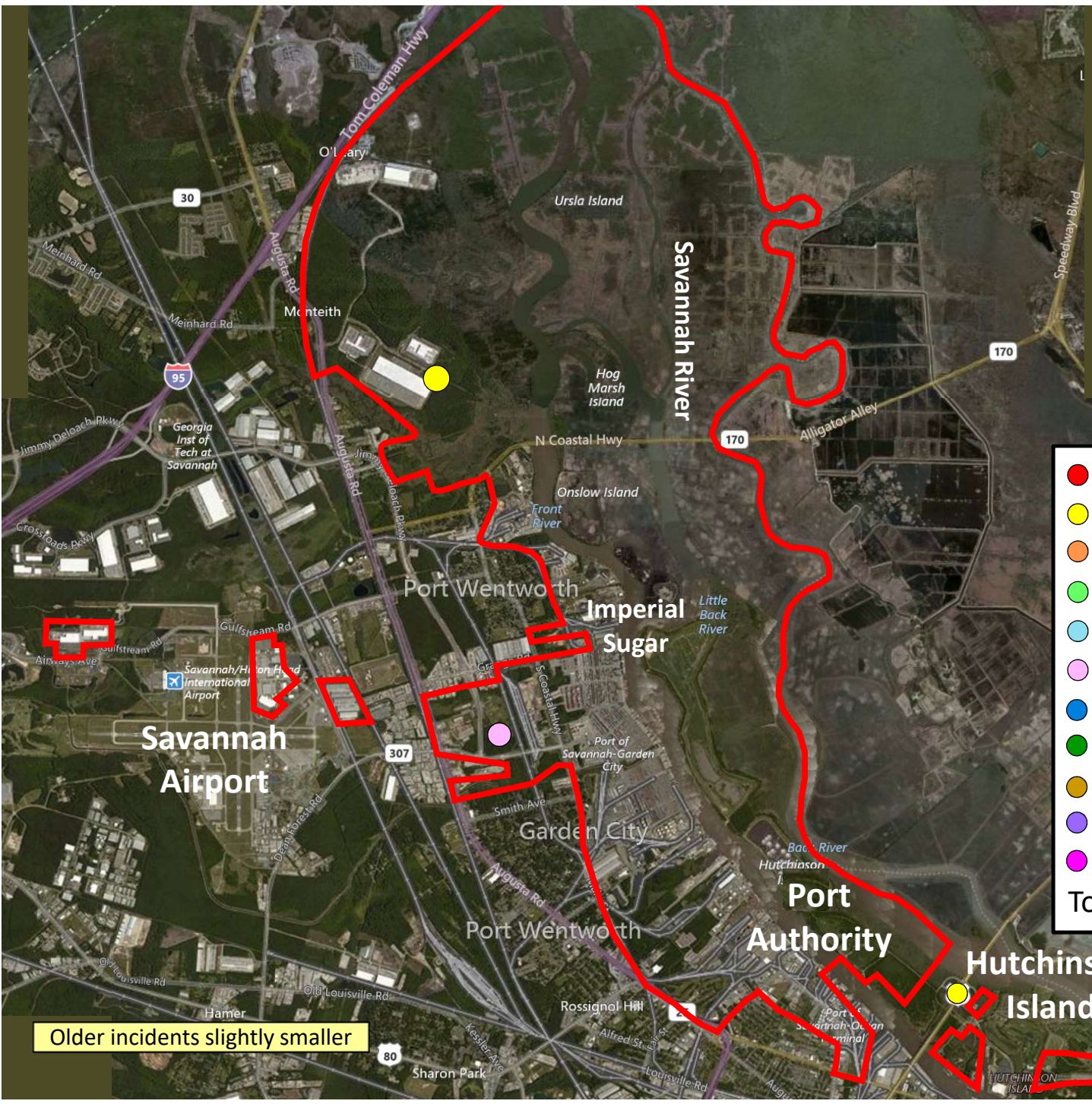
Older incidents slightly smaller



# Beat 6

## Part I Incidents Last 28 Days

● Robbery	0
● Aggravated Assault	2
● Rape	0
● Burglary	0
● Theft from Auto	0
● Theft from Yard	1
● Theft from Building	0
● Shoplifting	0
● Other Larceny	0
● Auto Theft	0
● Snatching/PickPkt	0
<b>Total</b>	<b>3</b>



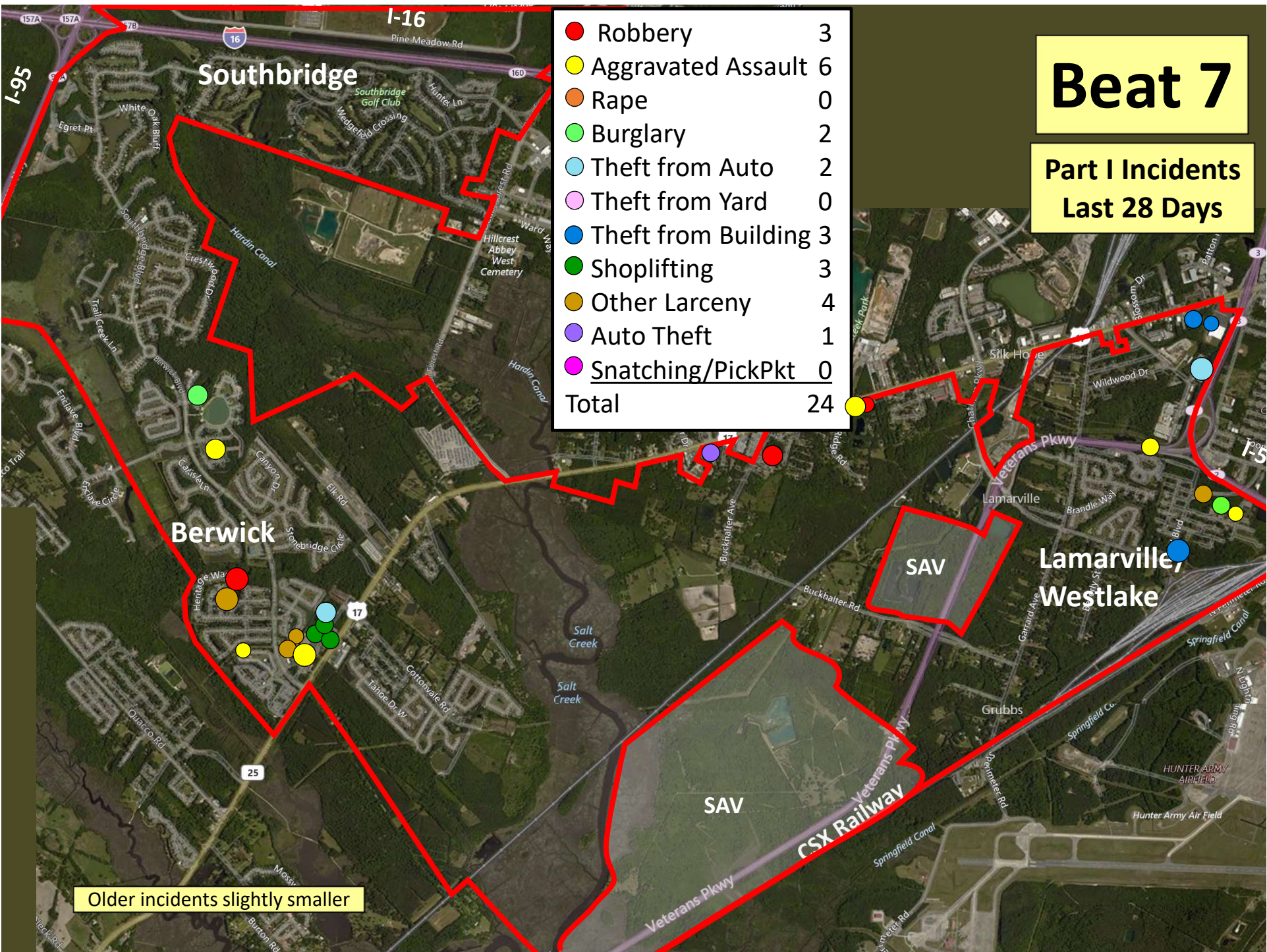
Older incidents slightly smaller



# Beat 7

Part I Incidents  
Last 28 Days

● Robbery	3
● Aggravated Assault	6
● Rape	0
● Burglary	2
● Theft from Auto	2
● Theft from Yard	0
● Theft from Building	3
● Shoplifting	3
● Other Larceny	4
● Auto Theft	1
● Snatching/PickPkt	0
<b>Total</b>	<b>24</b>



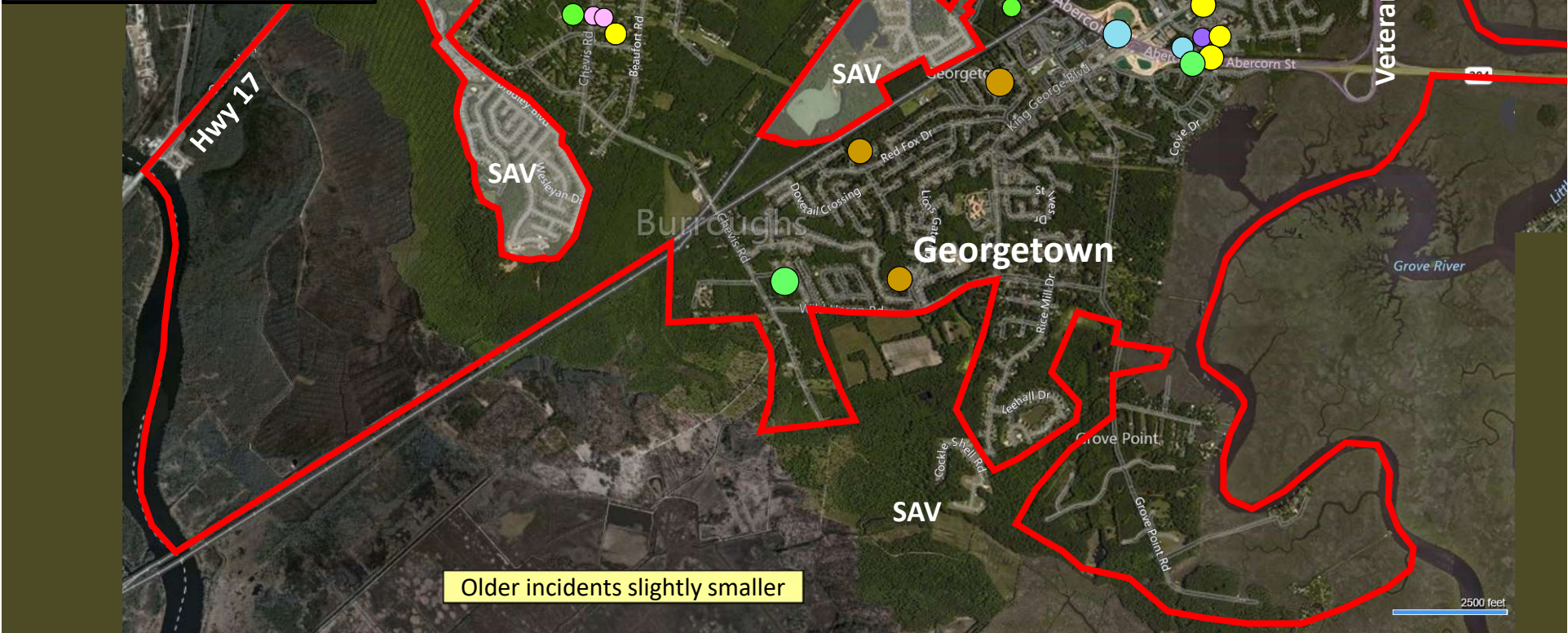
Older incidents slightly smaller



● Robbery	0
● Aggravated Assault	5
● Rape	0
● Burglary	7
● Theft from Auto	5
● Theft from Yard	3
● Theft from Bldg	1
● Shoplifting	4
● Other Larceny	3
● Auto Theft	2
● Sudden Snatching	0
<b>Total</b>	<b>30</b>

**Part I Incidents  
Last 28 Days**

**Beat 8**



Older incidents slightly smaller

2500 feet



# Beat 9

Part I Incidents  
Last 28 Days

Homicide	1
Robbery	0
Aggravated Assault	6
Rape	0
Burglary	2
Theft from Auto	6
Theft from Yard	0
Theft from Building	2
Shoplifting	1
Other Larceny	1
Auto Theft	2
Snatching/PickPkt	0
<b>Total</b>	<b>21</b>



Older incidents slightly smaller