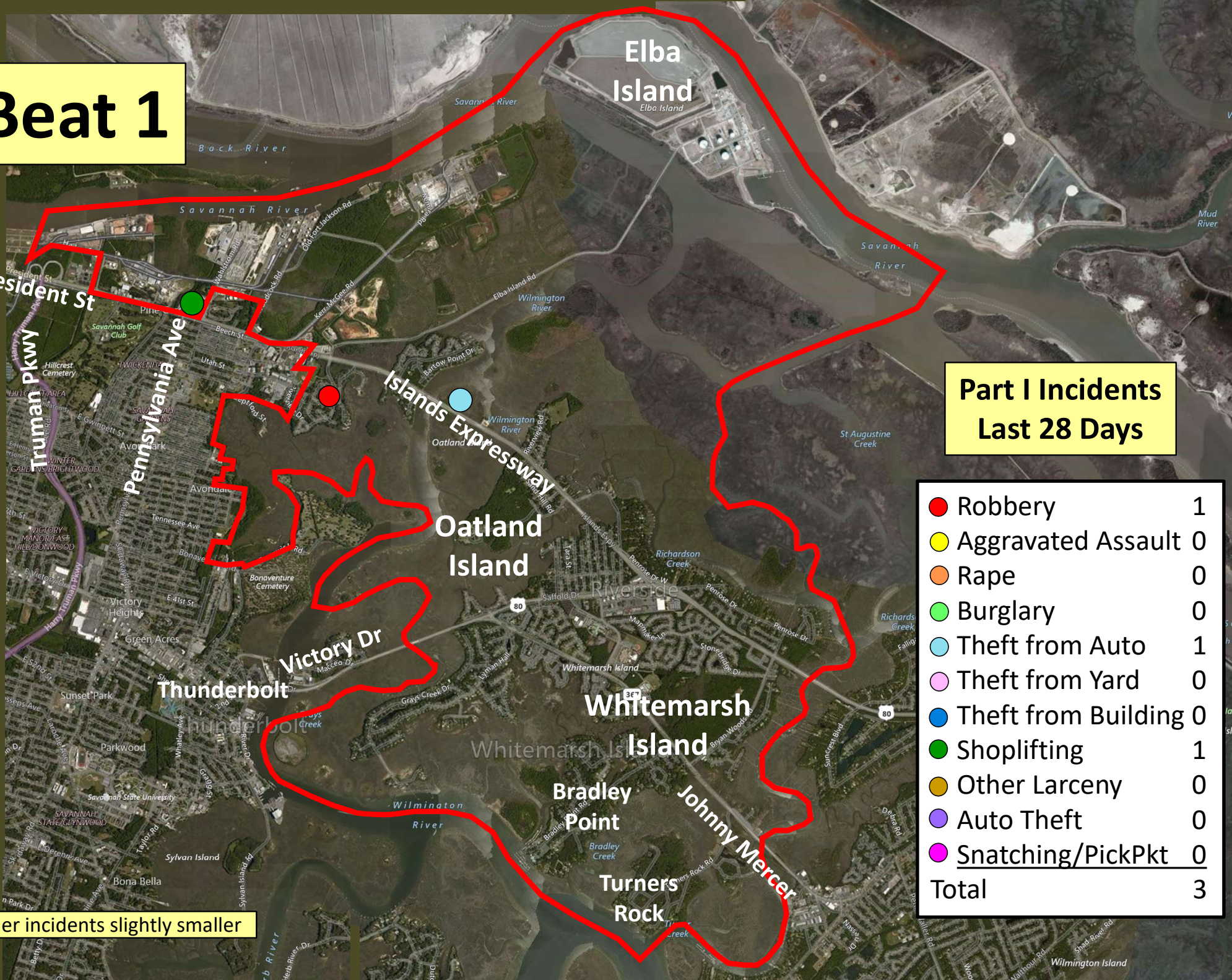


Beat 1

Part I Incidents Last 28 Days

| | |
|-----------------------|----------|
| ● Robbery | 1 |
| ● Aggravated Assault | 0 |
| ● Rape | 0 |
| ● Burglary | 0 |
| ● Theft from Auto | 1 |
| ● Theft from Yard | 0 |
| ● Theft from Building | 0 |
| ● Shoplifting | 1 |
| ● Other Larceny | 0 |
| ● Auto Theft | 0 |
| ● Snatching/PickPkt | 0 |
| Total | 3 |

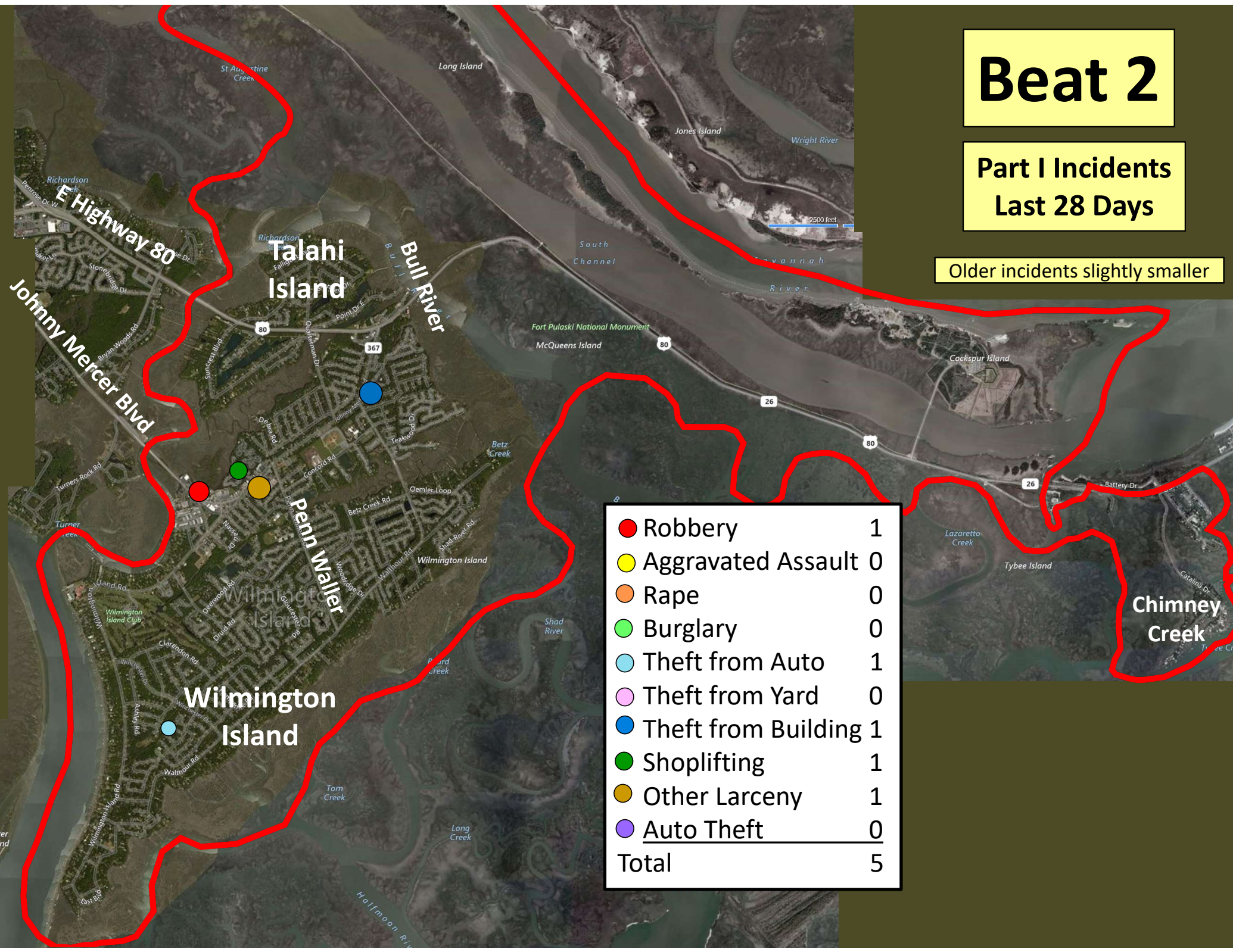
Older incidents slightly smaller



Beat 2

Part I Incidents
Last 28 Days

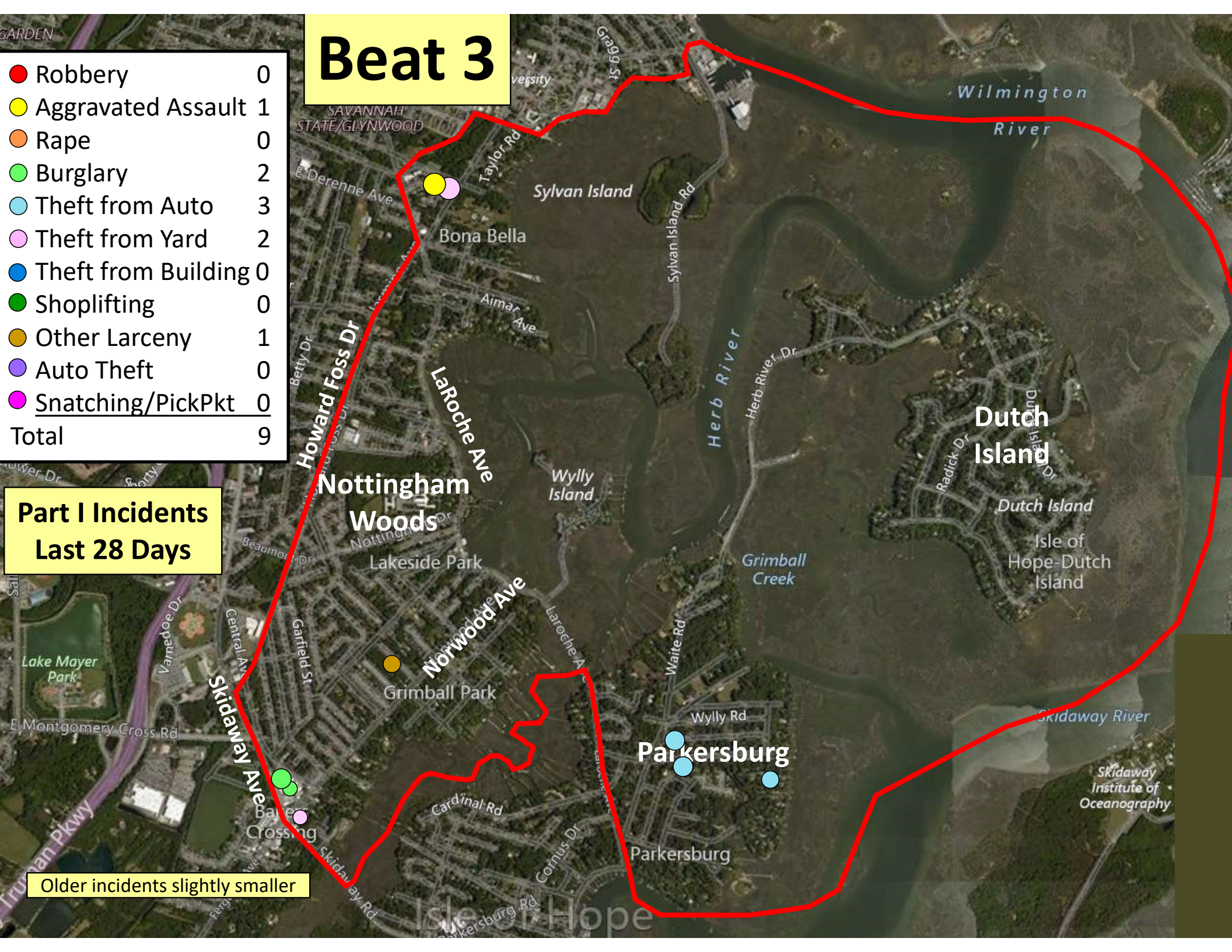
Older incidents slightly smaller



Beat 3

| | |
|-----------------------|----------|
| ● Robbery | 0 |
| ● Aggravated Assault | 1 |
| ● Rape | 0 |
| ● Burglary | 2 |
| ● Theft from Auto | 3 |
| ● Theft from Yard | 2 |
| ● Theft from Building | 0 |
| ● Shoplifting | 0 |
| ● Other Larceny | 1 |
| ● Auto Theft | 0 |
| ● Snatching/PickPkt | 0 |
| Total | 9 |

Part I Incidents Last 28 Days



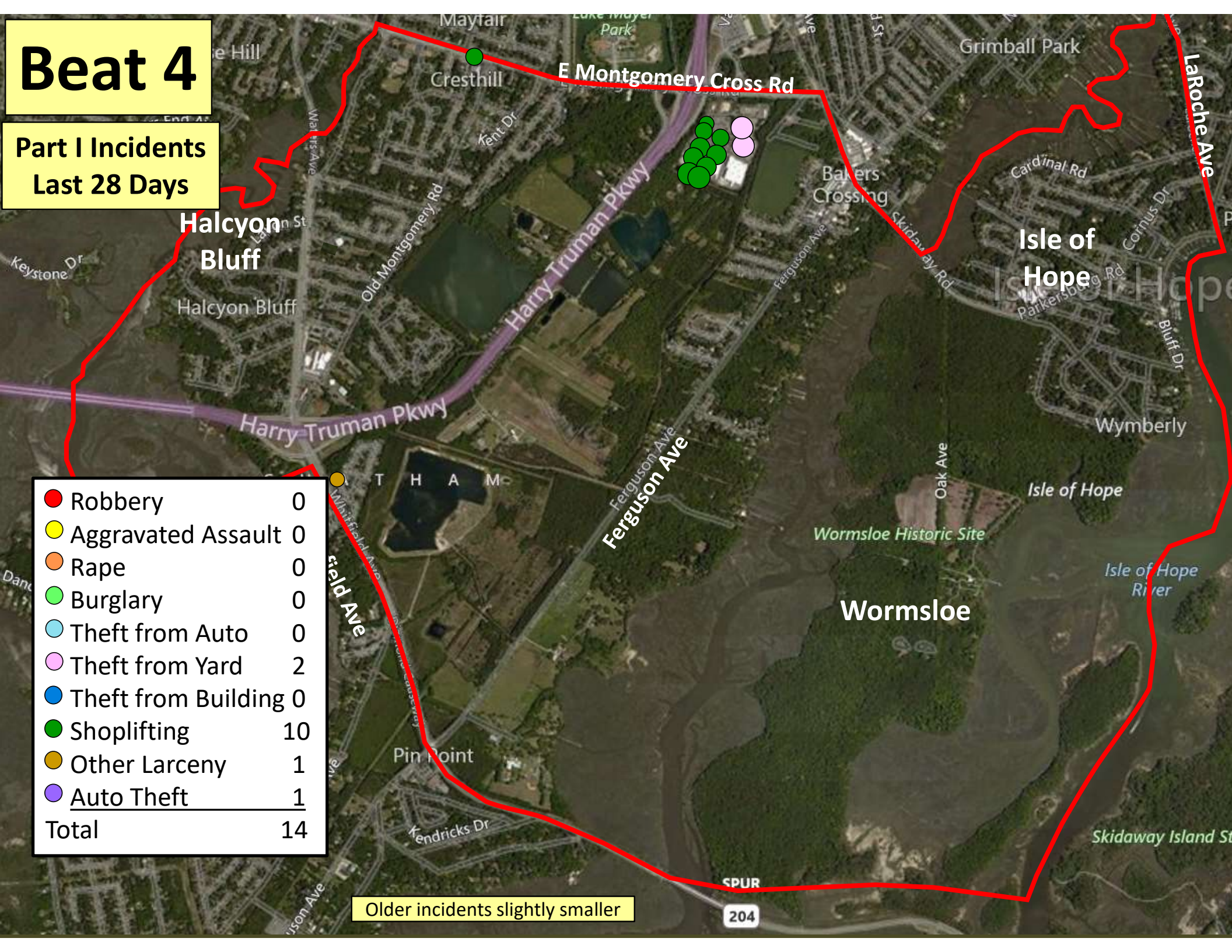
Older incidents slightly smaller

Beat 4

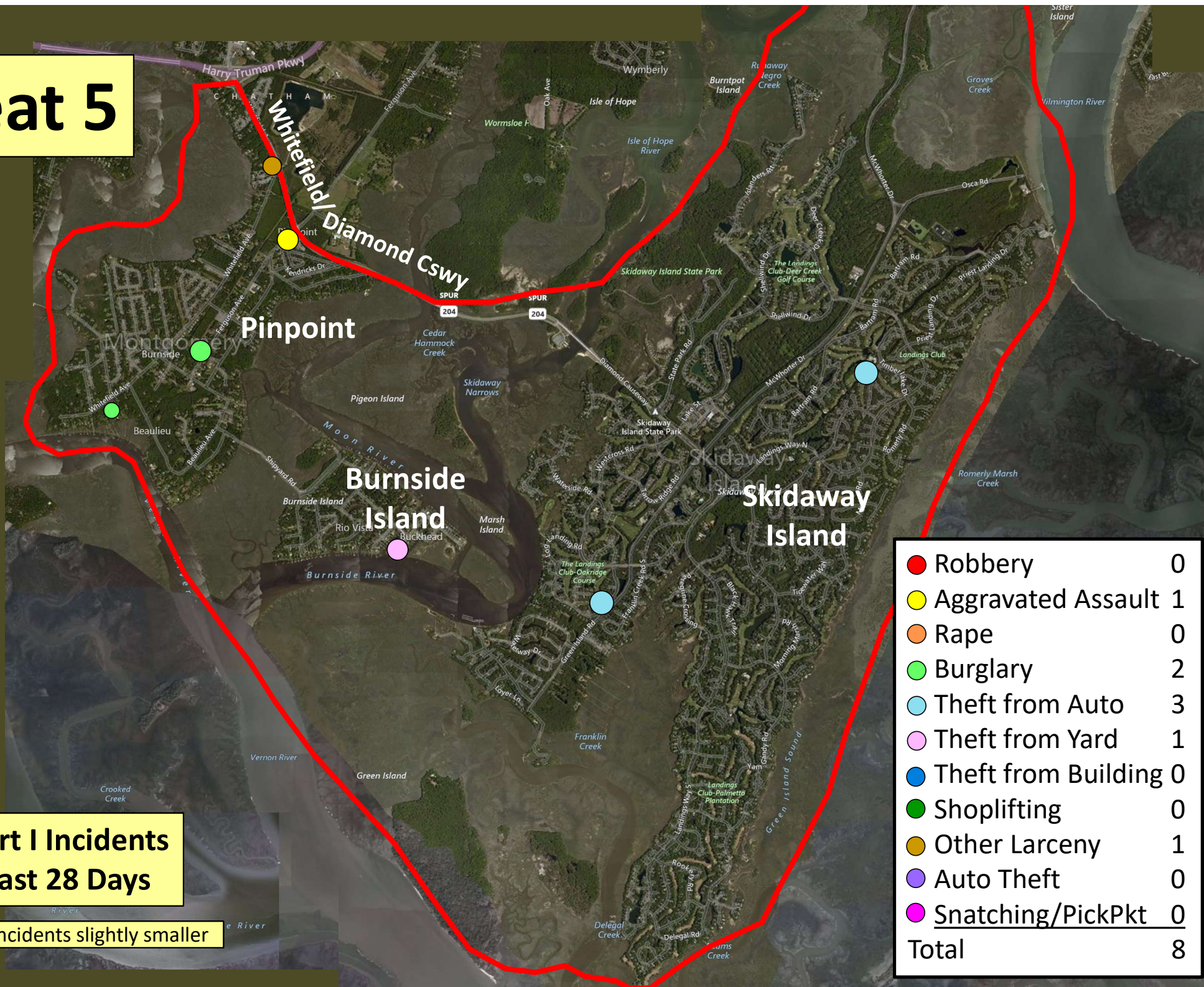
Part I Incidents
Last 28 Days

| | |
|-----------------------|-----------|
| ● Robbery | 0 |
| ● Aggravated Assault | 0 |
| ● Rape | 0 |
| ● Burglary | 0 |
| ● Theft from Auto | 0 |
| ● Theft from Yard | 2 |
| ● Theft from Building | 0 |
| ● Shoplifting | 10 |
| ● Other Larceny | 1 |
| ● Auto Theft | 1 |
| Total | 14 |

Older incidents slightly smaller



Beat 5



**Part I Incidents
Last 28 Days**

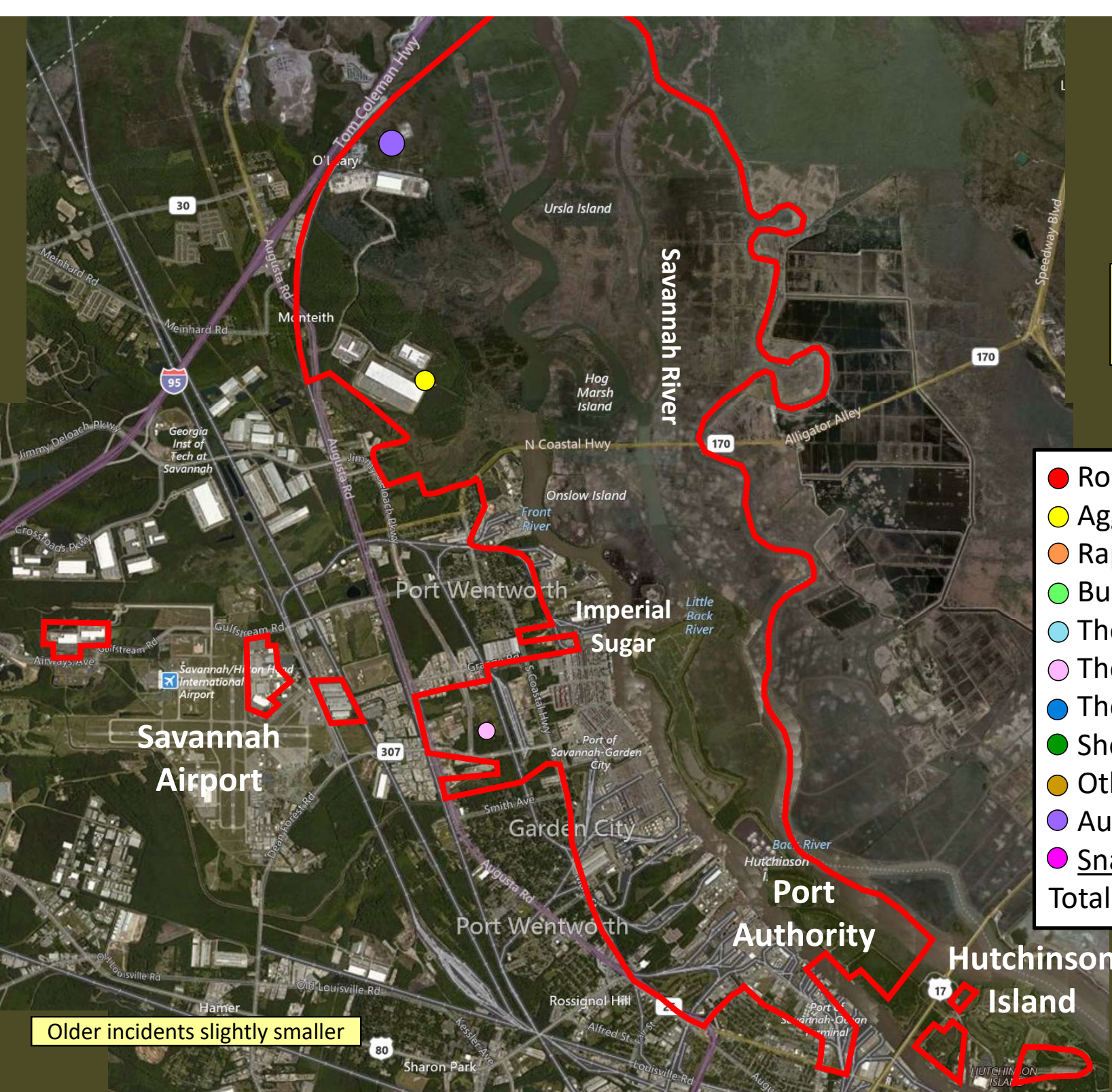
Older incidents slightly smaller

| | |
|-----------------------|----------|
| ● Robbery | 0 |
| ● Aggravated Assault | 1 |
| ● Rape | 0 |
| ● Burglary | 2 |
| ● Theft from Auto | 3 |
| ● Theft from Yard | 1 |
| ● Theft from Building | 0 |
| ● Shoplifting | 0 |
| ● Other Larceny | 1 |
| ● Auto Theft | 0 |
| ● Snatching/PickPkt | 0 |
| Total | 8 |

Beat 6

Part I Incidents
Last 28 Days

| | |
|-----------------------|----------|
| ● Robbery | 0 |
| ● Aggravated Assault | 1 |
| ● Rape | 0 |
| ● Burglary | 0 |
| ● Theft from Auto | 0 |
| ● Theft from Yard | 1 |
| ● Theft from Building | 0 |
| ● Shoplifting | 0 |
| ● Other Larceny | 0 |
| ● Auto Theft | 1 |
| ● Snatching/PickPkt | 0 |
| Total | 3 |

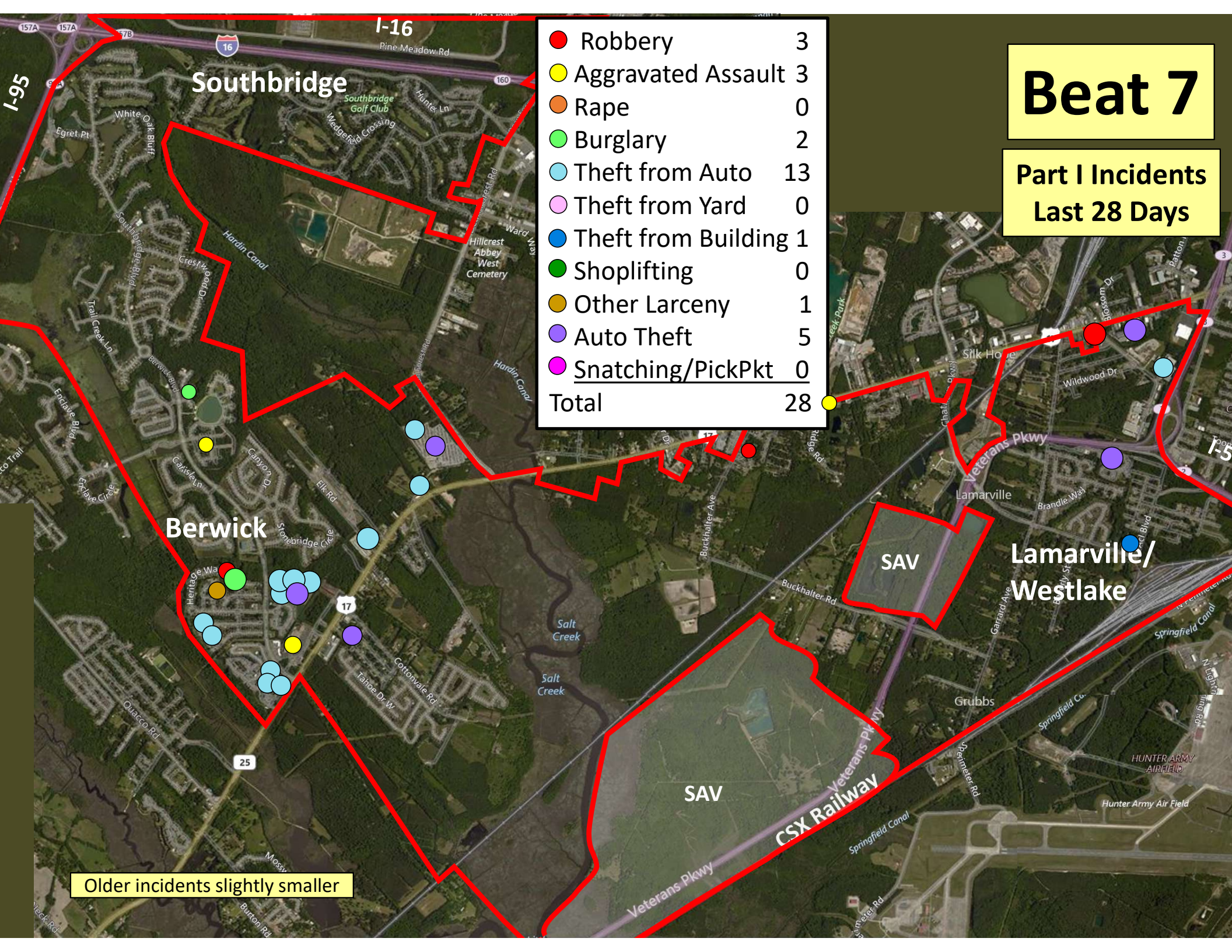


Older incidents slightly smaller

Beat 7

Part I Incidents
Last 28 Days

| | |
|-----------------------|-----------|
| ● Robbery | 3 |
| ● Aggravated Assault | 3 |
| ● Rape | 0 |
| ● Burglary | 2 |
| ● Theft from Auto | 13 |
| ● Theft from Yard | 0 |
| ● Theft from Building | 1 |
| ● Shoplifting | 0 |
| ● Other Larceny | 1 |
| ● Auto Theft | 5 |
| ● Snatching/PickPkt | 0 |
| Total | 28 |

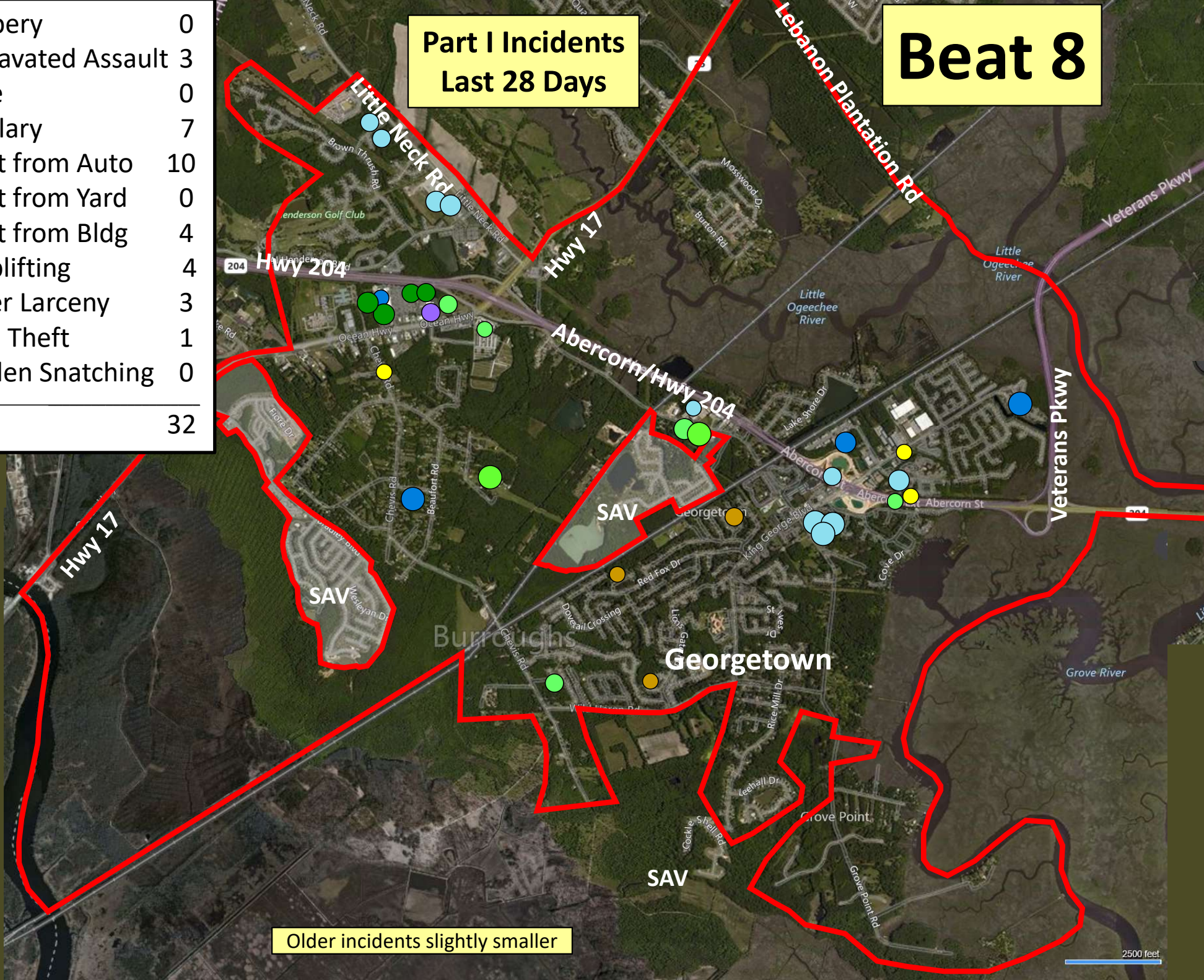


Older incidents slightly smaller

| | |
|----------------------|-----------|
| ● Robbery | 0 |
| ● Aggravated Assault | 3 |
| ● Rape | 0 |
| ● Burglary | 7 |
| ● Theft from Auto | 10 |
| ● Theft from Yard | 0 |
| ● Theft from Bldg | 4 |
| ● Shoplifting | 4 |
| ● Other Larceny | 3 |
| ● Auto Theft | 1 |
| ● Sudden Snatching | 0 |
| Total | 32 |

**Part I Incidents
Last 28 Days**

Beat 8



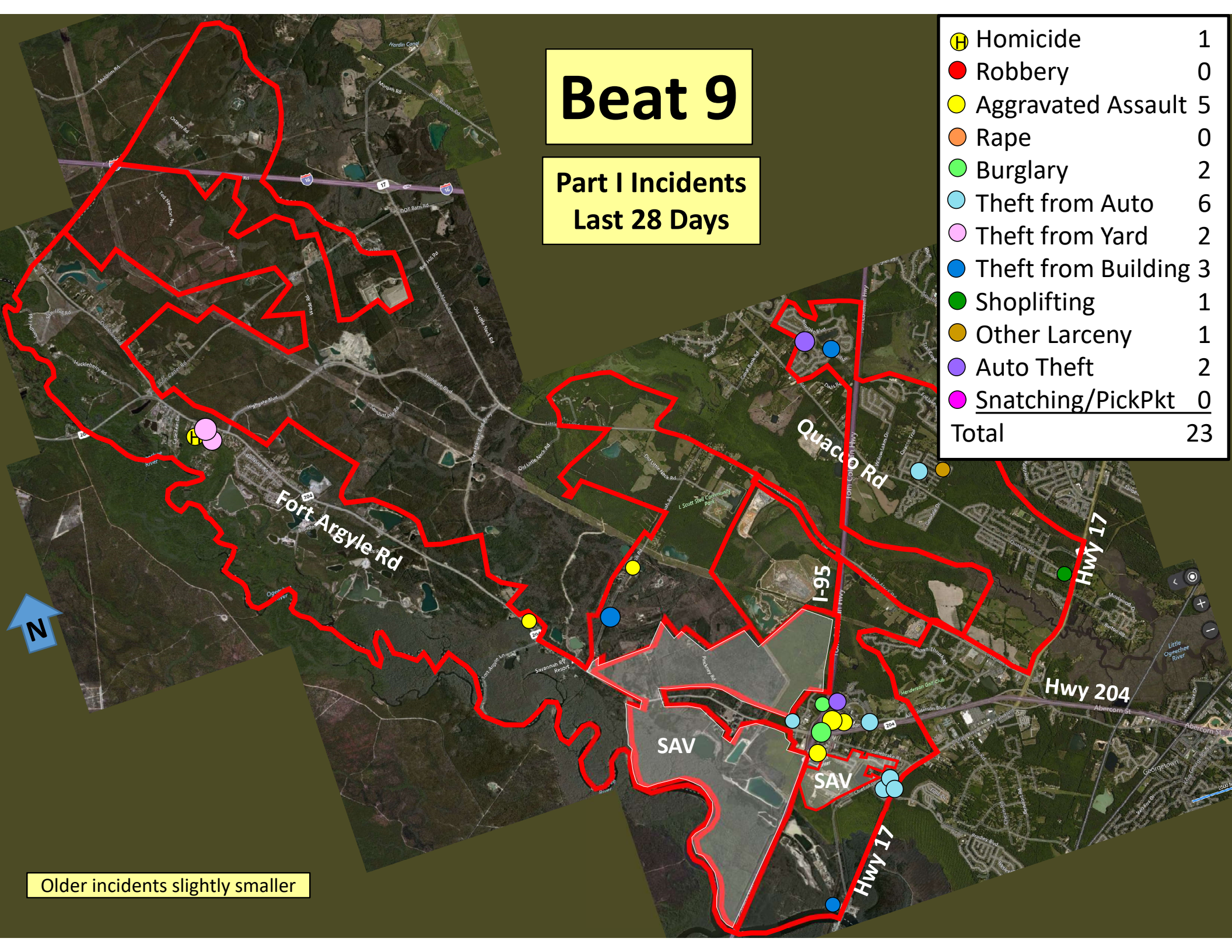
Older incidents slightly smaller

2500 feet

Beat 9

Part I Incidents
Last 28 Days

| | | |
|--------------|---------------------|-----------|
| 🚔 | Homicide | 1 |
| 🔴 | Robbery | 0 |
| 🟡 | Aggravated Assault | 5 |
| 🟠 | Rape | 0 |
| 🟢 | Burglary | 2 |
| 🟡 | Theft from Auto | 6 |
| 🟡 | Theft from Yard | 2 |
| 🟢 | Theft from Building | 3 |
| 🟢 | Shoplifting | 1 |
| 🟡 | Other Larceny | 1 |
| 🟡 | Auto Theft | 2 |
| 🟡 | Snatching/PickPkt | 0 |
| Total | | 23 |



Older incidents slightly smaller