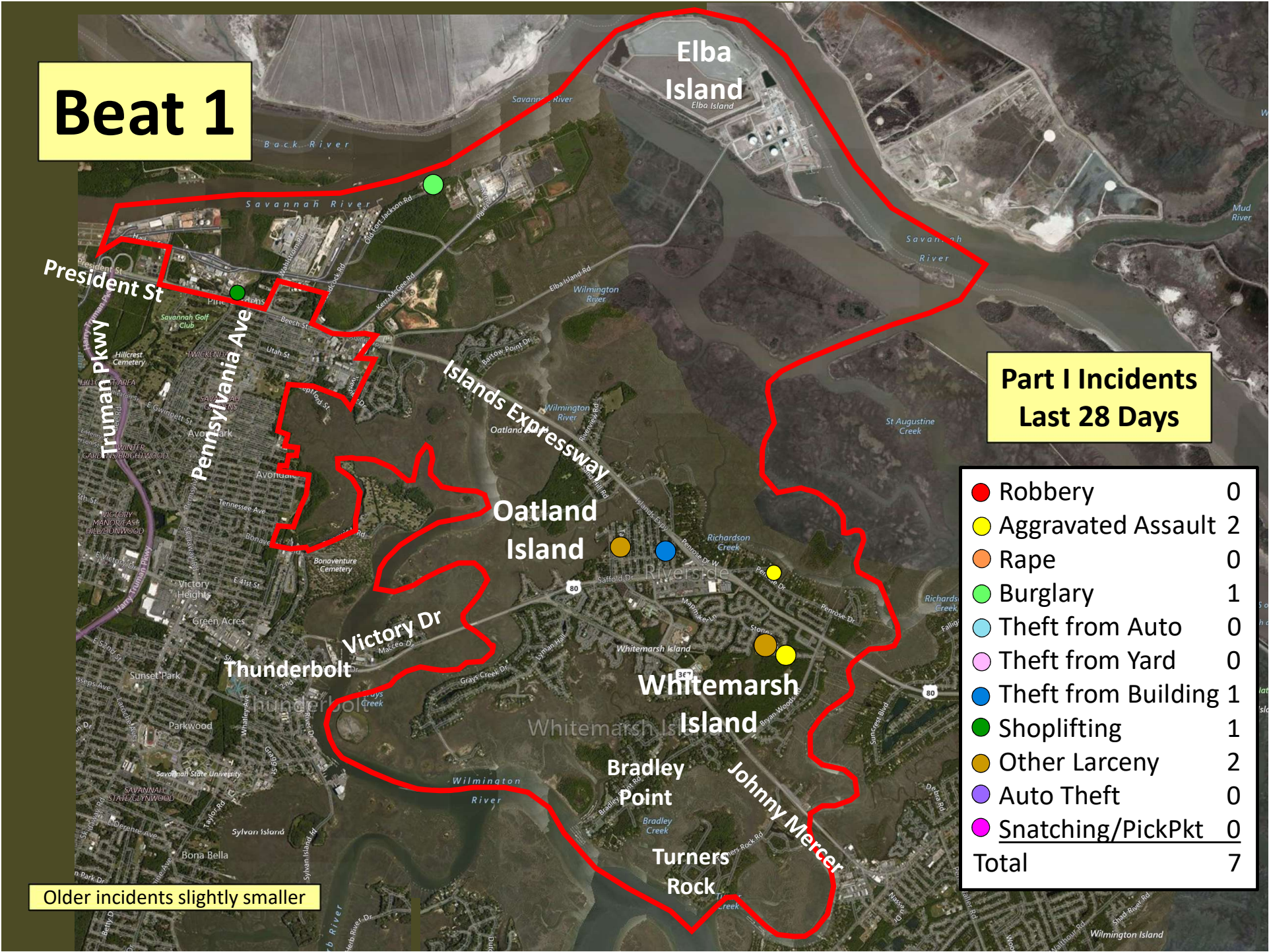


# Beat 1

## Part I Incidents Last 28 Days

● Robbery	0
● Aggravated Assault	2
● Rape	0
● Burglary	1
● Theft from Auto	0
● Theft from Yard	0
● Theft from Building	1
● Shoplifting	1
● Other Larceny	2
● Auto Theft	0
● Snatching/PickPkt	0
<b>Total</b>	<b>7</b>

Older incidents slightly smaller

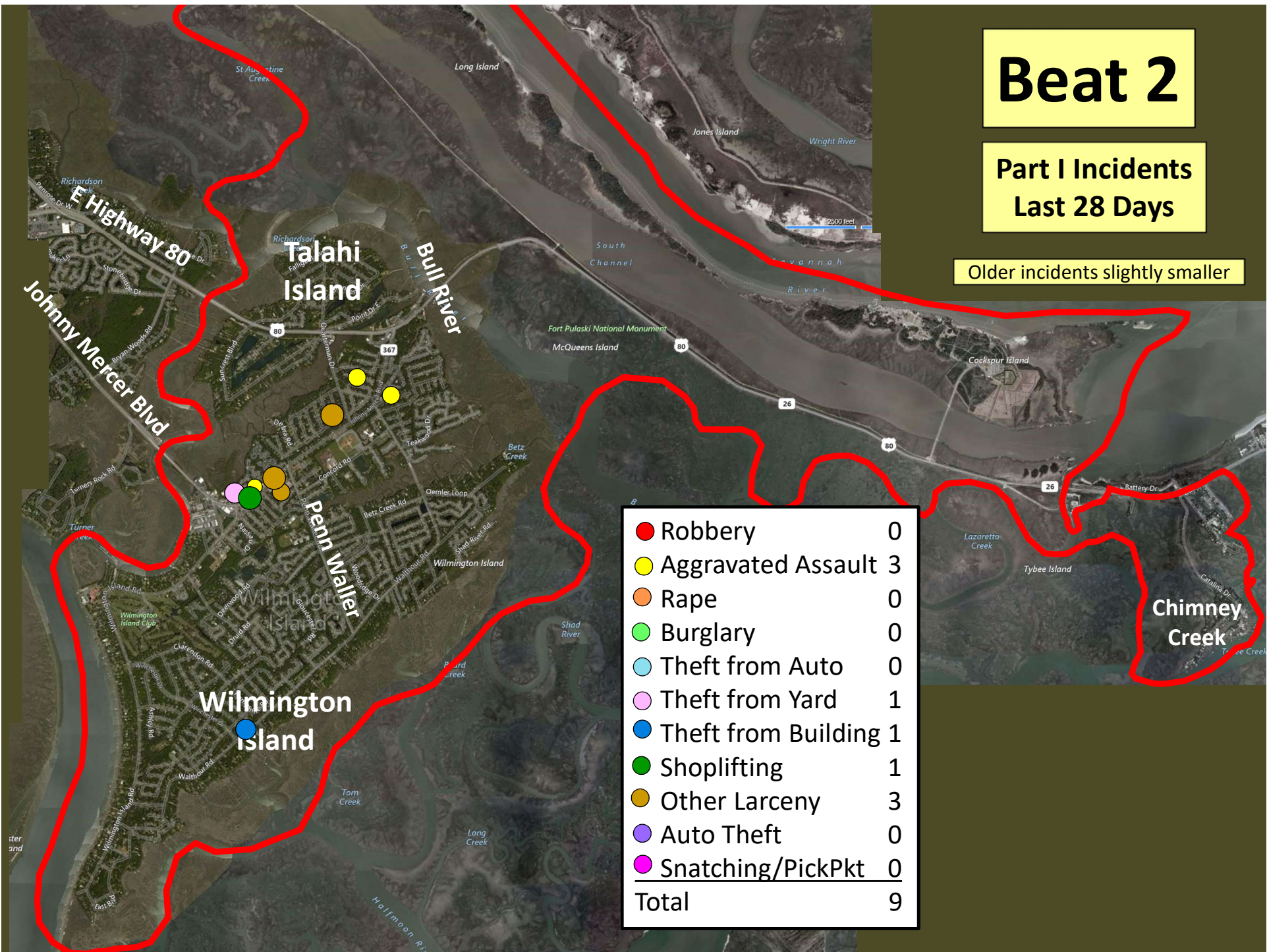




# Beat 2

Part I Incidents  
Last 28 Days

Older incidents slightly smaller

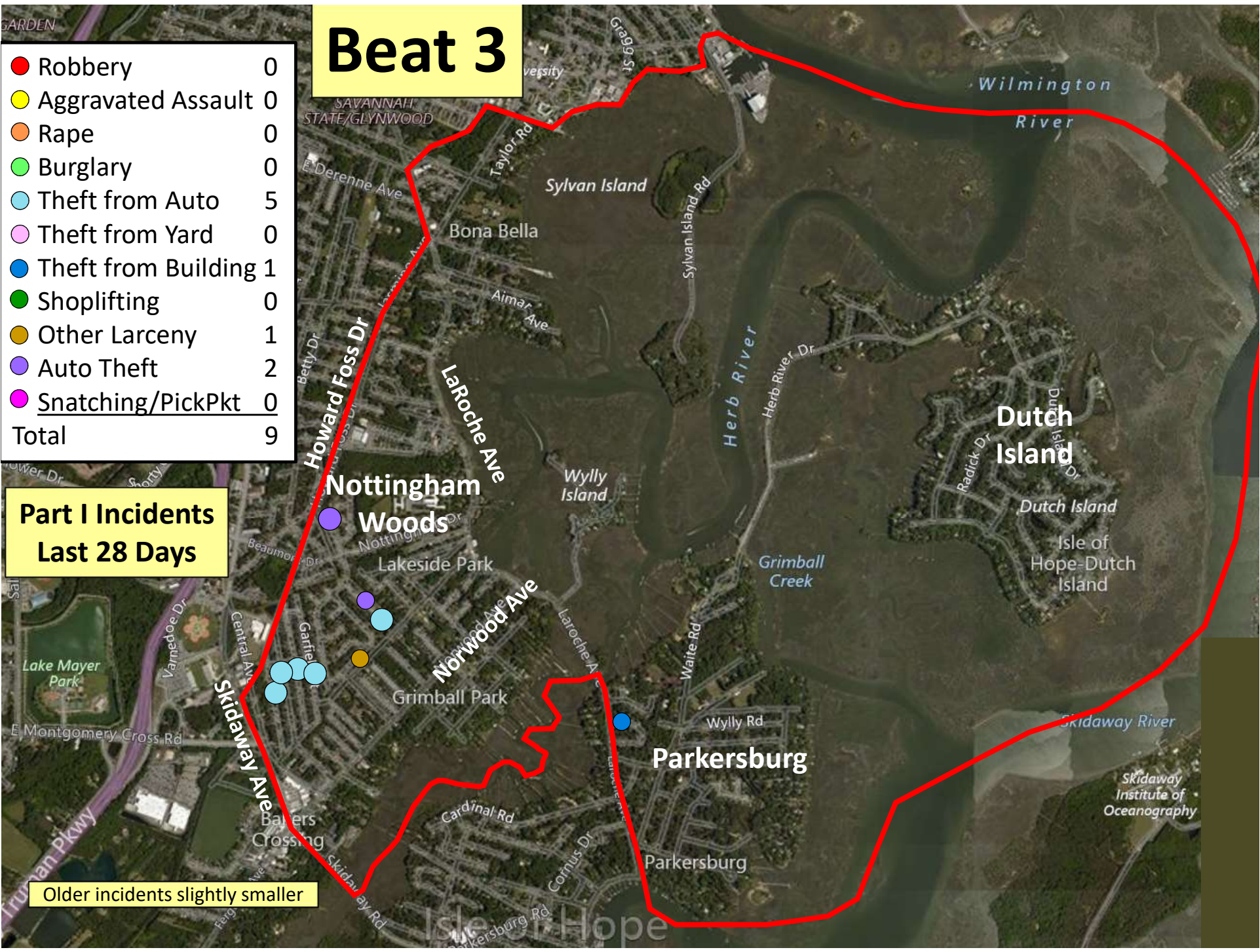




# Beat 3

● Robbery	0
● Aggravated Assault	0
● Rape	0
● Burglary	0
● Theft from Auto	5
● Theft from Yard	0
● Theft from Building	1
● Shoplifting	0
● Other Larceny	1
● Auto Theft	2
● Snatching/PickPkt	0
<b>Total</b>	<b>9</b>

## Part I Incidents Last 28 Days

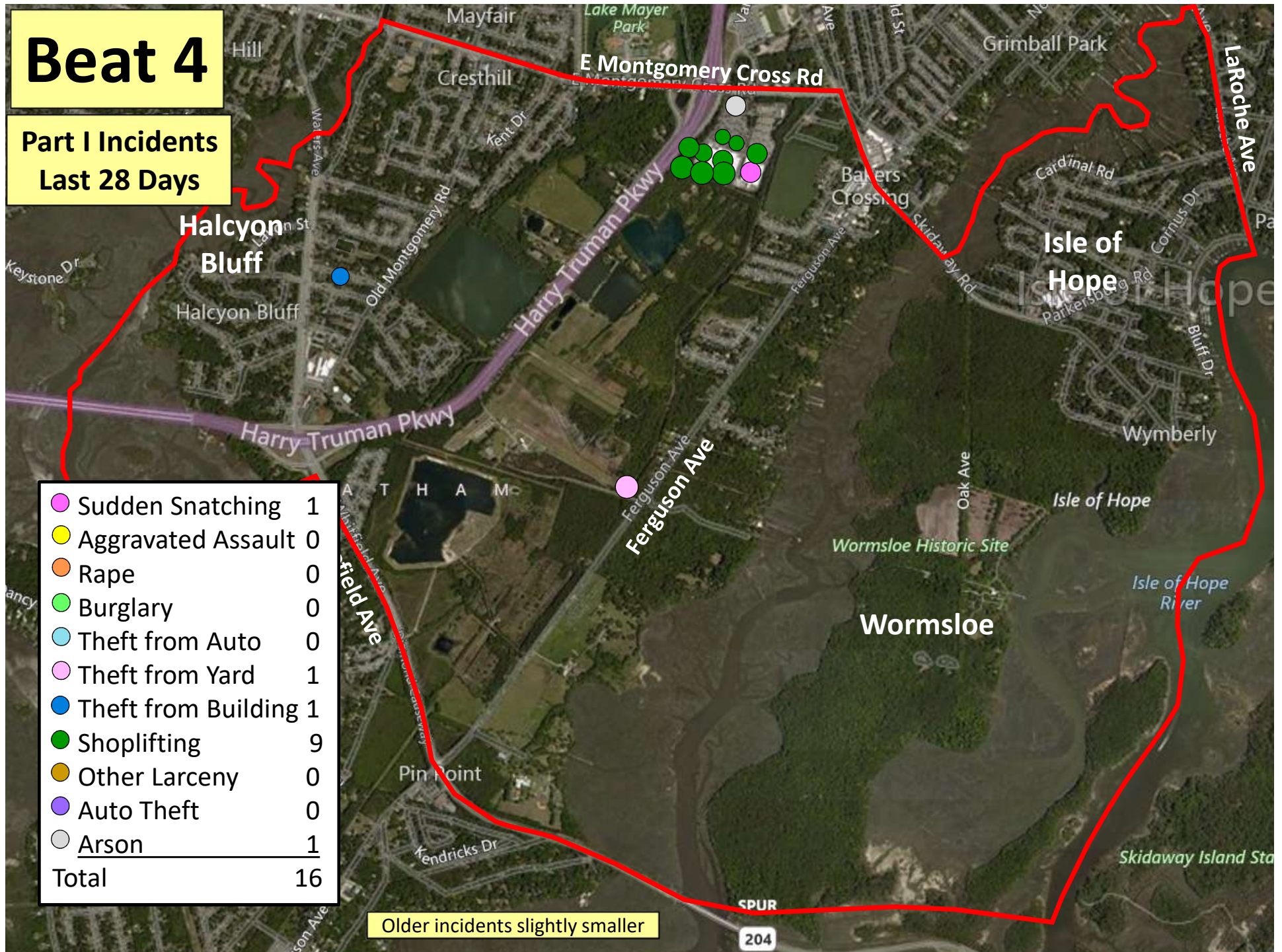


Older incidents slightly smaller



# Beat 4

Part I Incidents  
Last 28 Days

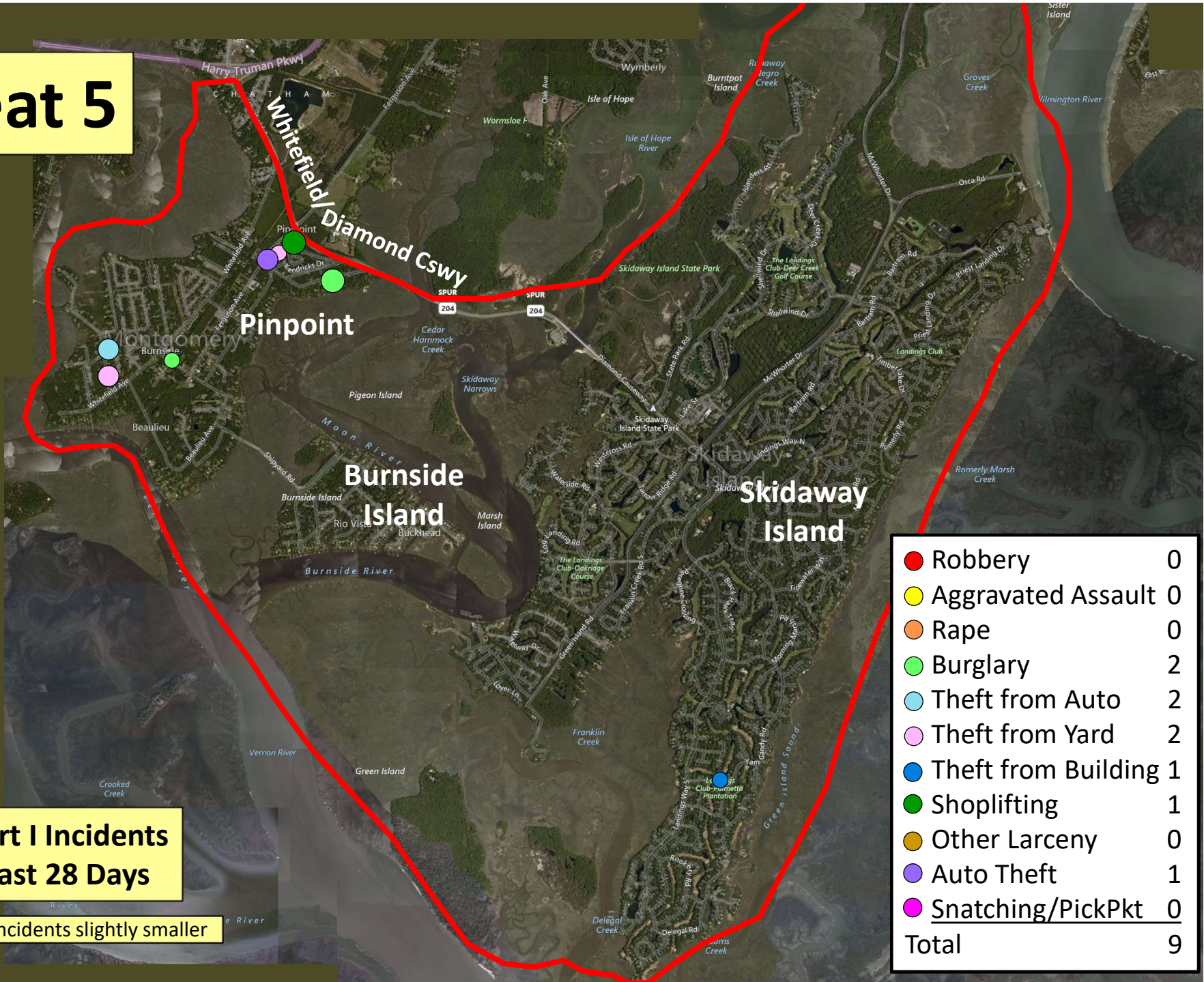


Older incidents slightly smaller

204



# Beat 5



**Part I Incidents  
Last 28 Days**

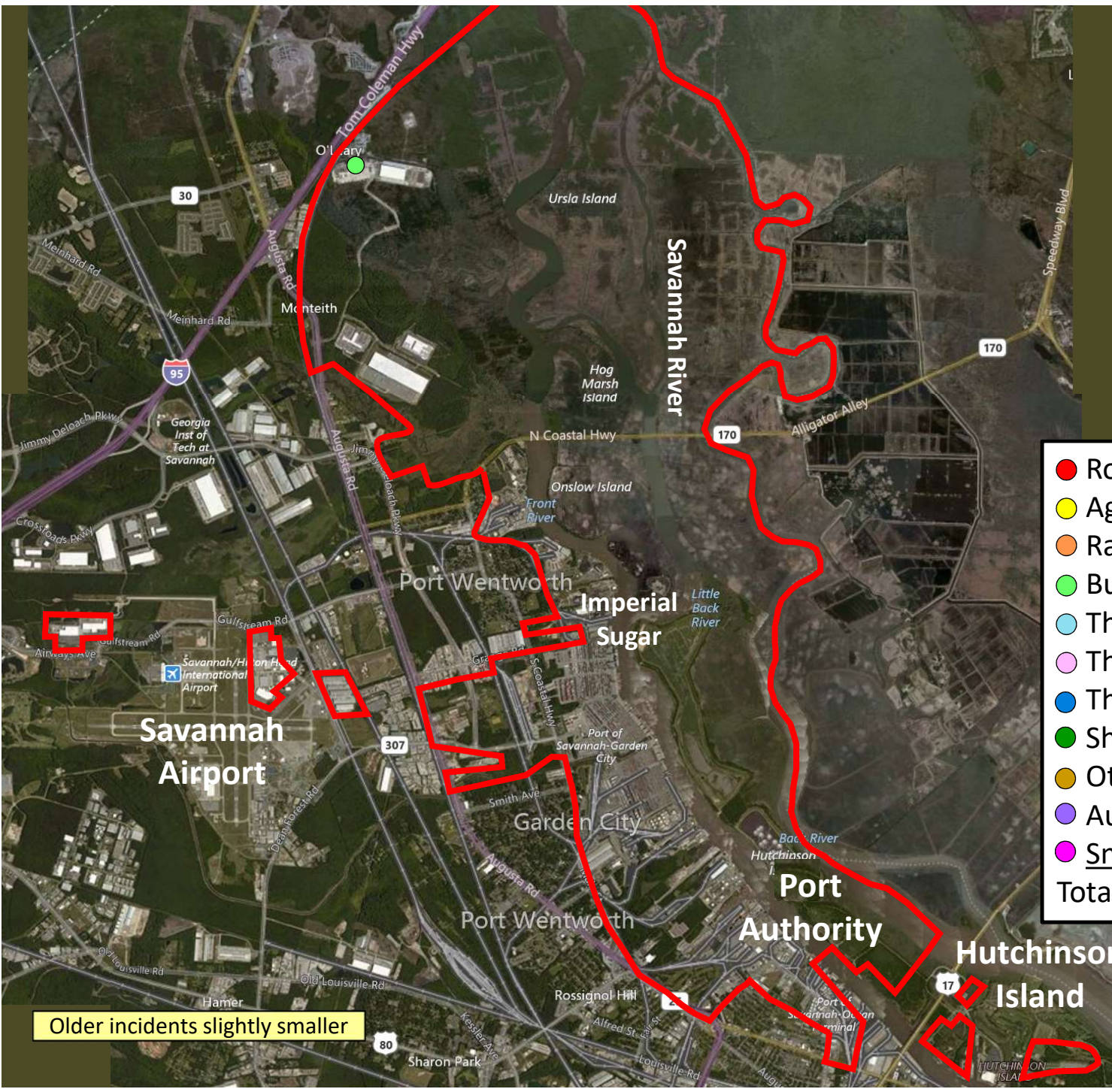
Older incidents slightly smaller



# Beat 6

Part I Incidents  
Last 28 Days

● Robbery	0
● Aggravated Assault	0
● Rape	0
● Burglary	1
● Theft from Auto	0
● Theft from Yard	0
● Theft from Building	0
● Shoplifting	0
● Other Larceny	0
● Auto Theft	0
● Snatching/PickPkt	0
Total	1



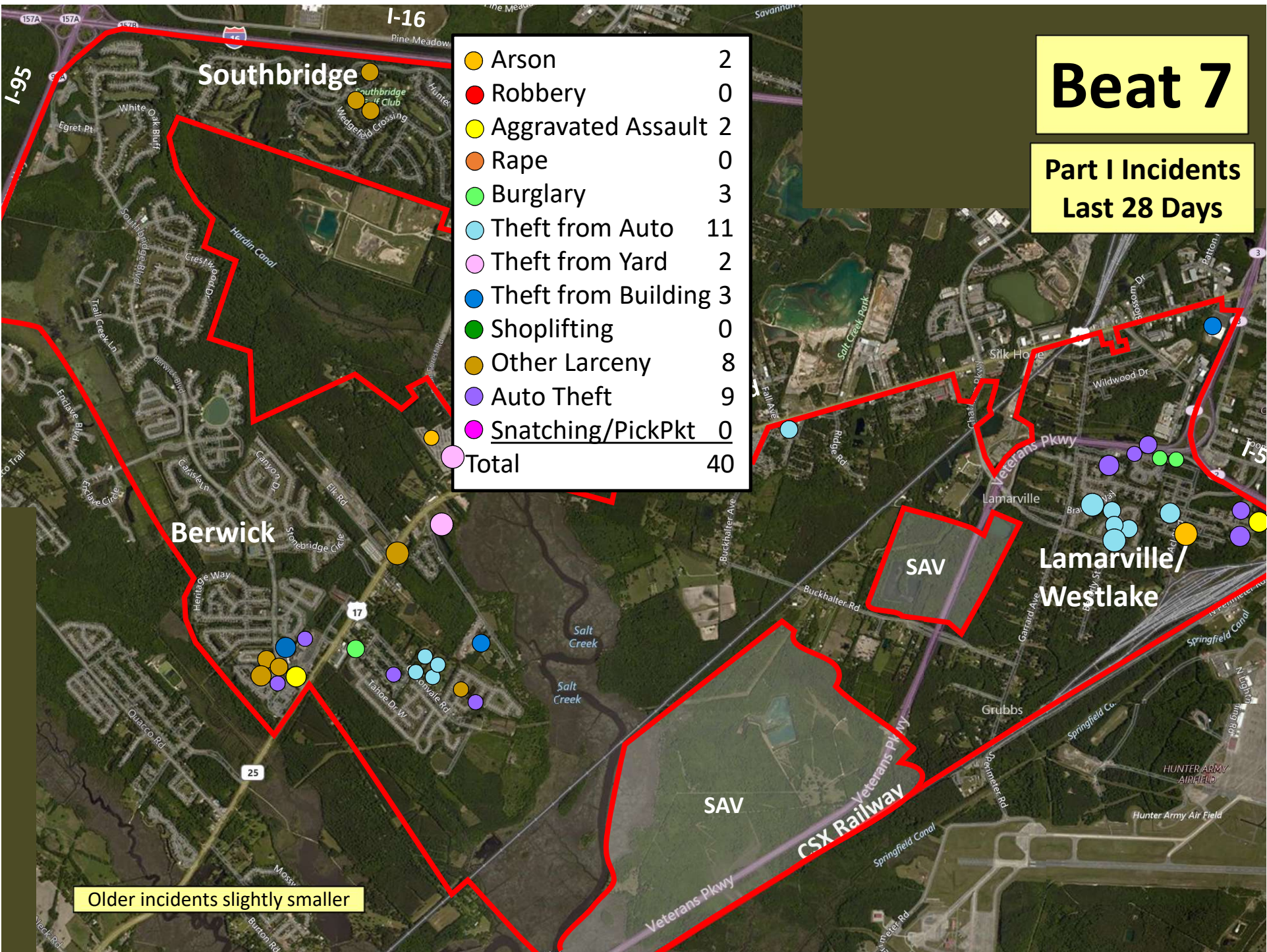
Older incidents slightly smaller



# Beat 7

Part I Incidents  
Last 28 Days

Arson	2
Robbery	0
Aggravated Assault	2
Rape	0
Burglary	3
Theft from Auto	11
Theft from Yard	2
Theft from Building	3
Shoplifting	0
Other Larceny	8
Auto Theft	9
Snatching/PickPkt	0
<b>Total</b>	<b>40</b>



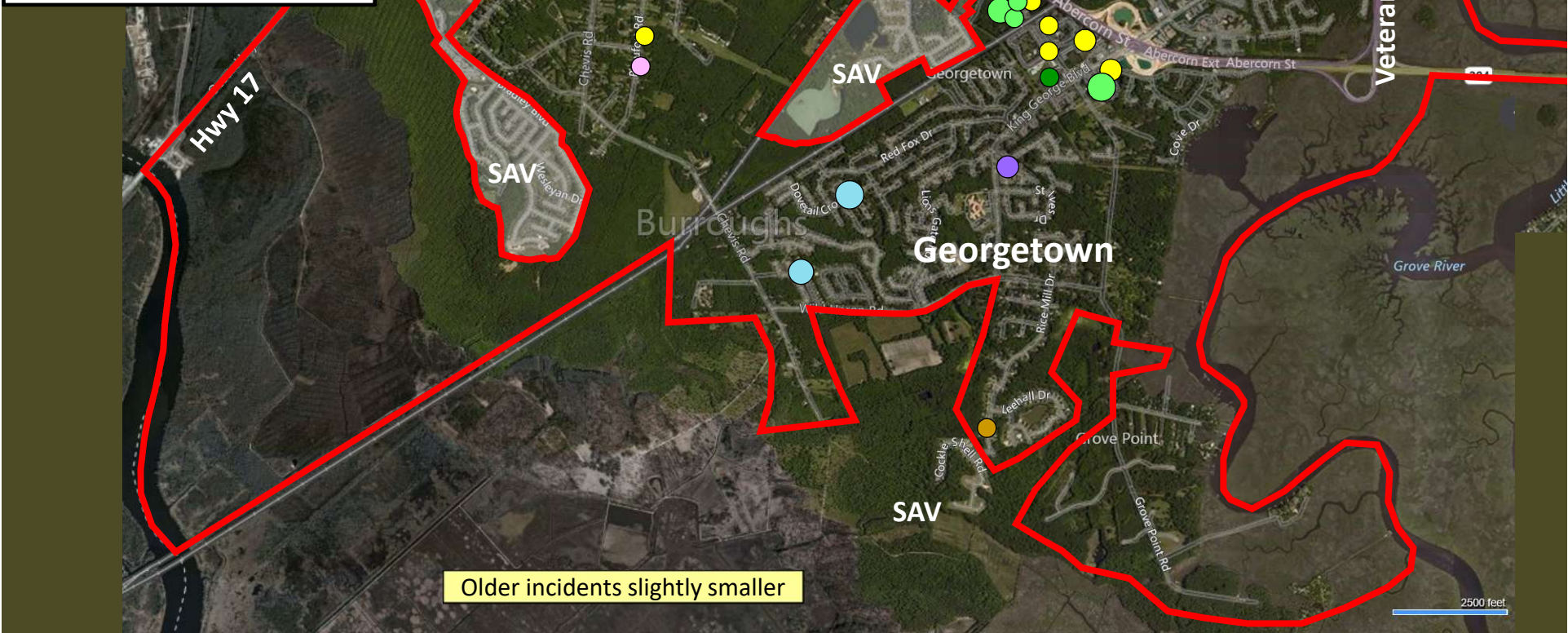
Older incidents slightly smaller



● Robbery	0
● Aggravated Assault	6
● Rape	0
● Burglary	5
● Theft from Auto	4
● Theft from Yard	1
● Theft from Bldg	0
● Shoplifting	14
● Other Larceny	1
● Auto Theft	1
● Sudden Snatching	0
<b>Total</b>	<b>32</b>

**Part I Incidents  
Last 28 Days**

**Beat 8**



Older incidents slightly smaller



