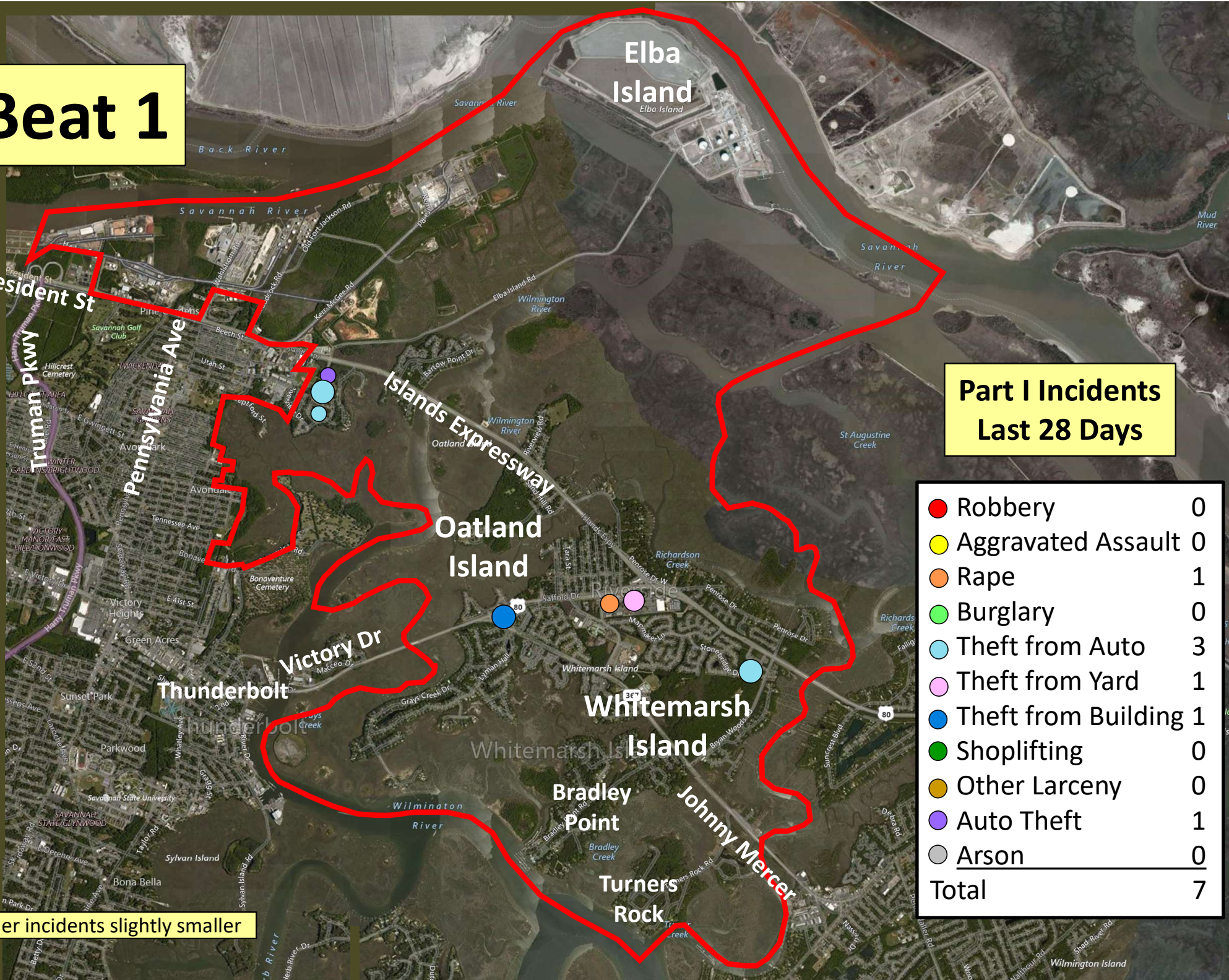


# Beat 1

## Part I Incidents Last 28 Days

● Robbery	0
● Aggravated Assault	0
● Rape	1
● Burglary	0
● Theft from Auto	3
● Theft from Yard	1
● Theft from Building	1
● Shoplifting	0
● Other Larceny	0
● Auto Theft	1
● Arson	0
<b>Total</b>	<b>7</b>

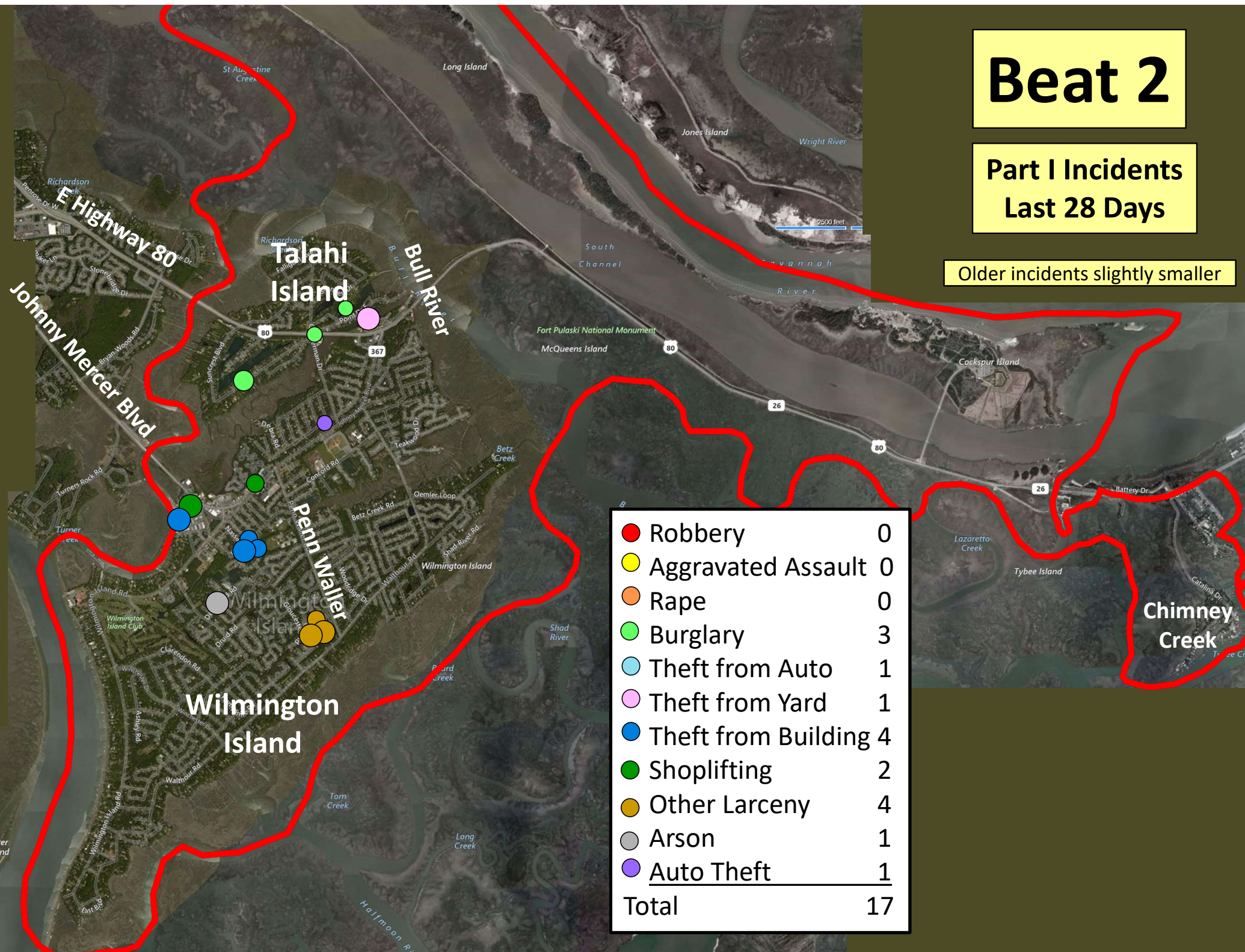
Older incidents slightly smaller



# Beat 2

Part I Incidents  
Last 28 Days

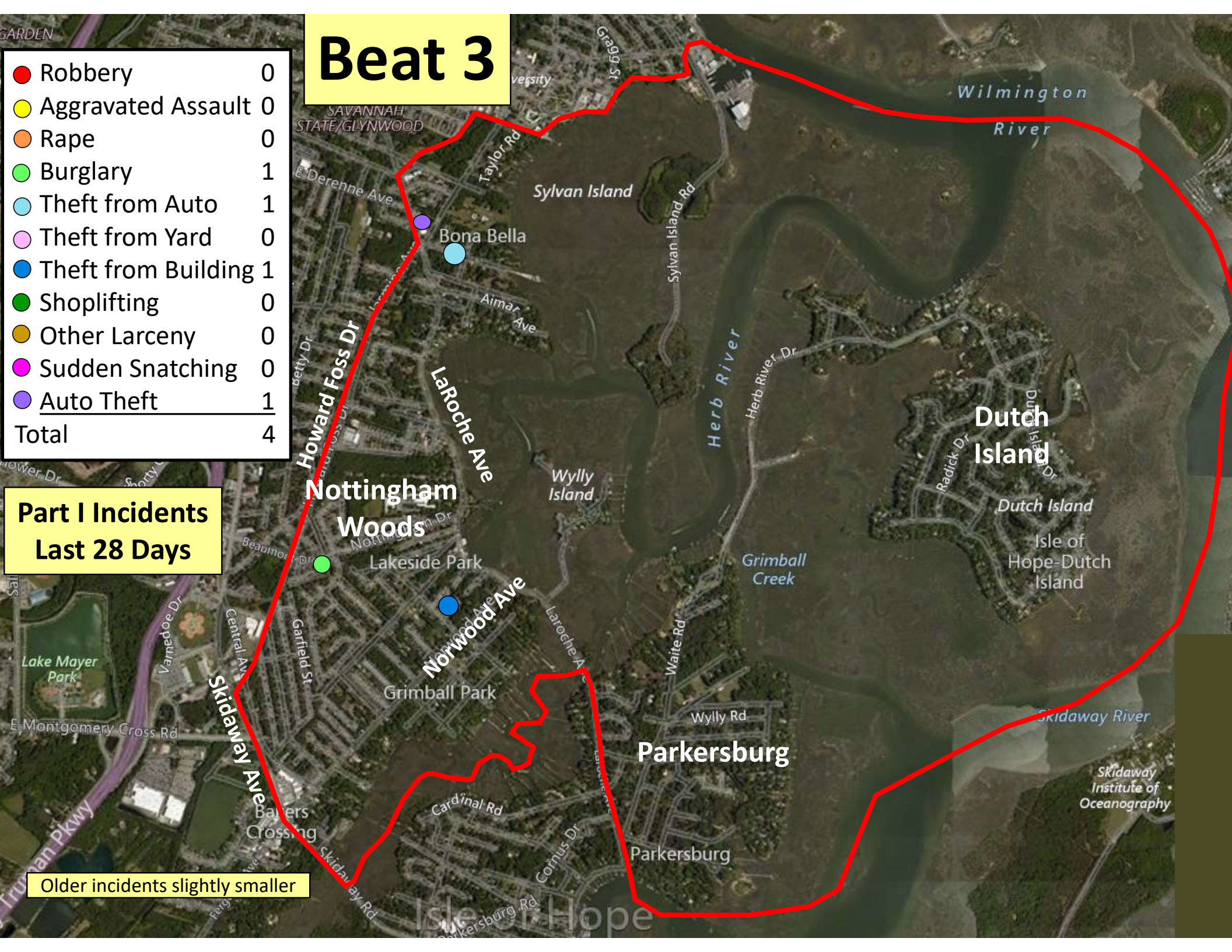
Older incidents slightly smaller



# Beat 3

● Robbery	0
● Aggravated Assault	0
● Rape	0
● Burglary	1
● Theft from Auto	1
● Theft from Yard	0
● Theft from Building	1
● Shoplifting	0
● Other Larceny	0
● Sudden Snatching	0
● Auto Theft	1
<b>Total</b>	<b>4</b>

## Part I Incidents Last 28 Days



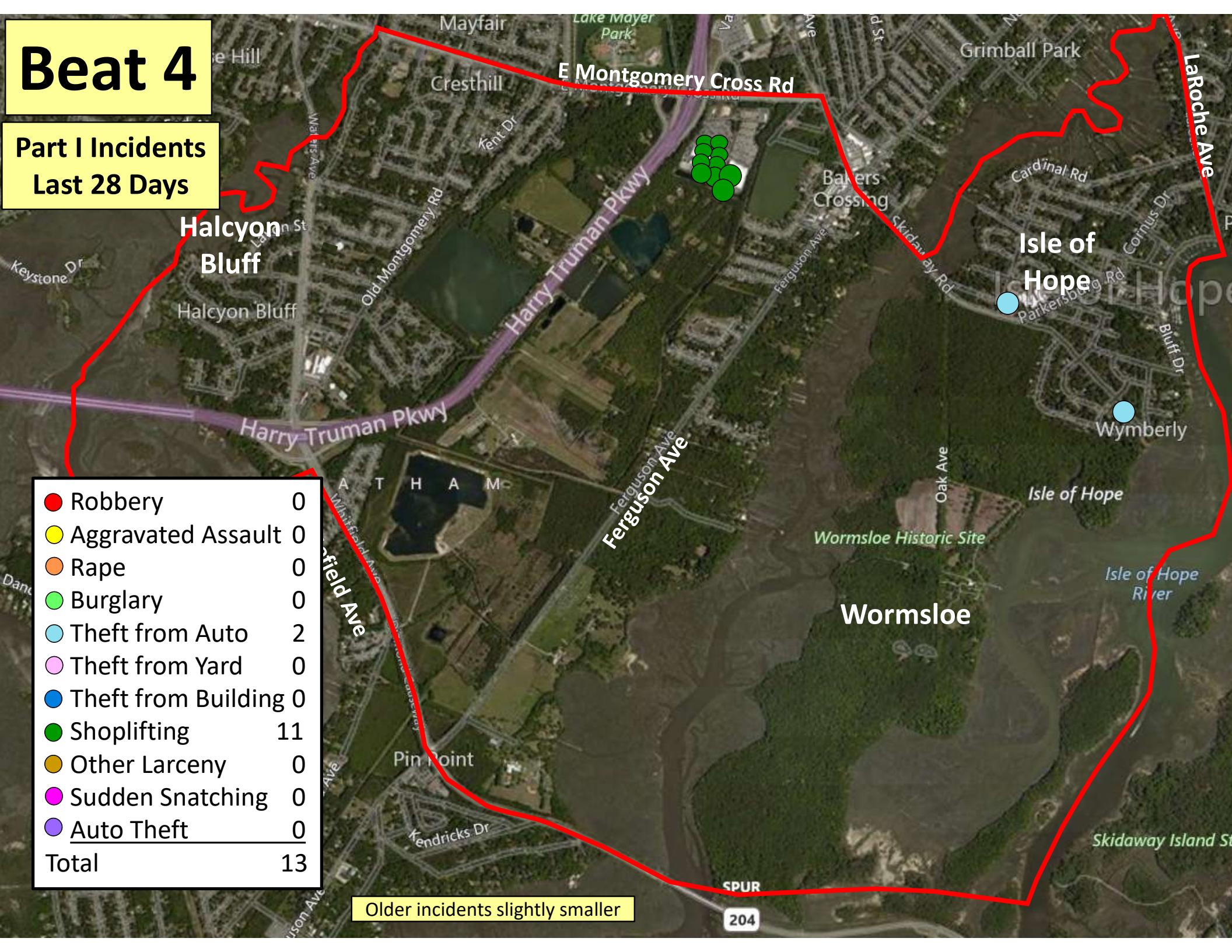
Older incidents slightly smaller

# Beat 4

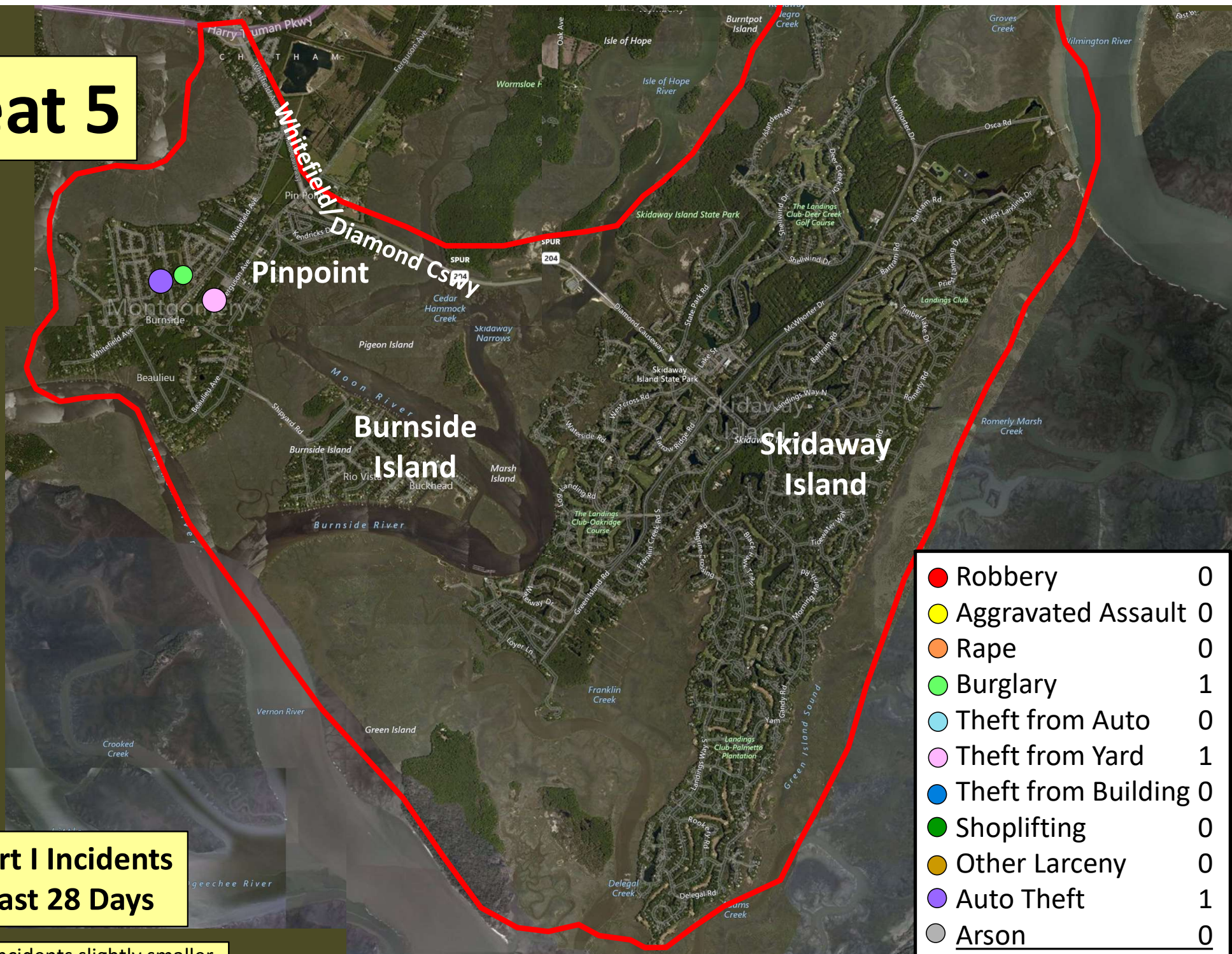
Part I Incidents  
Last 28 Days

● Robbery	0
● Aggravated Assault	0
● Rape	0
● Burglary	0
● Theft from Auto	2
● Theft from Yard	0
● Theft from Building	0
● Shoplifting	11
● Other Larceny	0
● Sudden Snatching	0
● Auto Theft	0
<b>Total</b>	<b>13</b>

Older incidents slightly smaller



# Beat 5



Pinpoint

Part I Incidents  
Last 28 Days

Older incidents slightly smaller

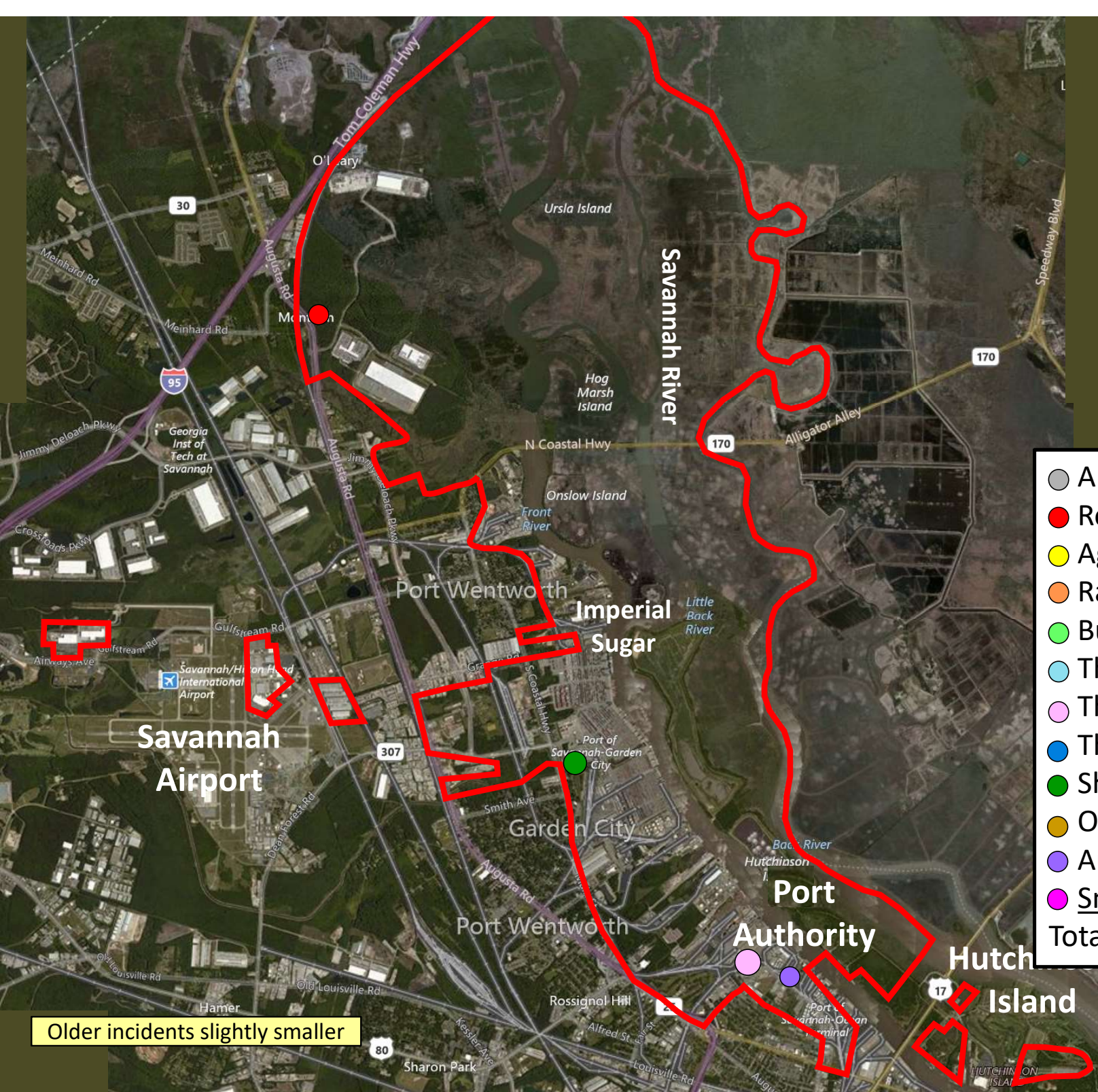
● Robbery	0
● Aggravated Assault	0
● Rape	0
● Burglary	1
● Theft from Auto	0
● Theft from Yard	1
● Theft from Building	0
● Shoplifting	0
● Other Larceny	0
● Auto Theft	1
● Arson	0
<b>Total</b>	<b>3</b>

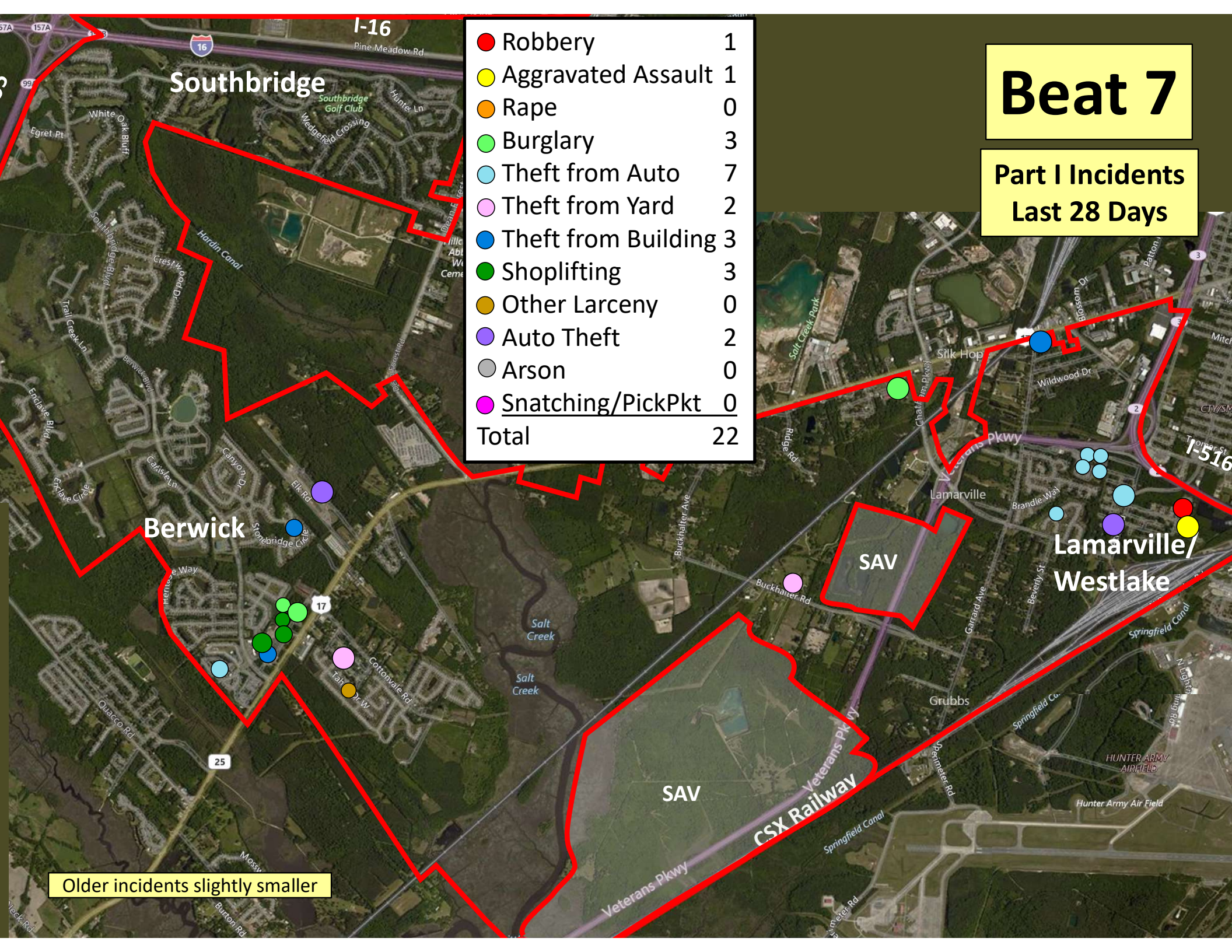
# Beat 6

Part I Incidents  
Last 28 Days

○ Arson	0
● Robbery	1
● Aggravated Assault	0
● Rape	0
● Burglary	0
● Theft from Auto	0
● Theft from Yard	1
● Theft from Building	0
● Shoplifting	1
● Other Larceny	0
● Auto Theft	1
● Snatching/PickPkt	0
<b>Total</b>	<b>4</b>

Older incidents slightly smaller





● Robbery	1
● Aggravated Assault	1
● Rape	0
● Burglary	3
● Theft from Auto	7
● Theft from Yard	2
● Theft from Building	3
● Shoplifting	3
● Other Larceny	0
● Auto Theft	2
● Arson	0
● Snatching/PickPkt	0
<b>Total</b>	<b>22</b>

**Beat 7**

**Part I Incidents  
Last 28 Days**

Older incidents slightly smaller

Southbridge

Berwick

Lamarville/  
Westlake

SAV

SAV

Veterans Pkwy  
CSX Railway

I-516

I-16

25

17

3

2

3

2

3

7

2

3

0

1

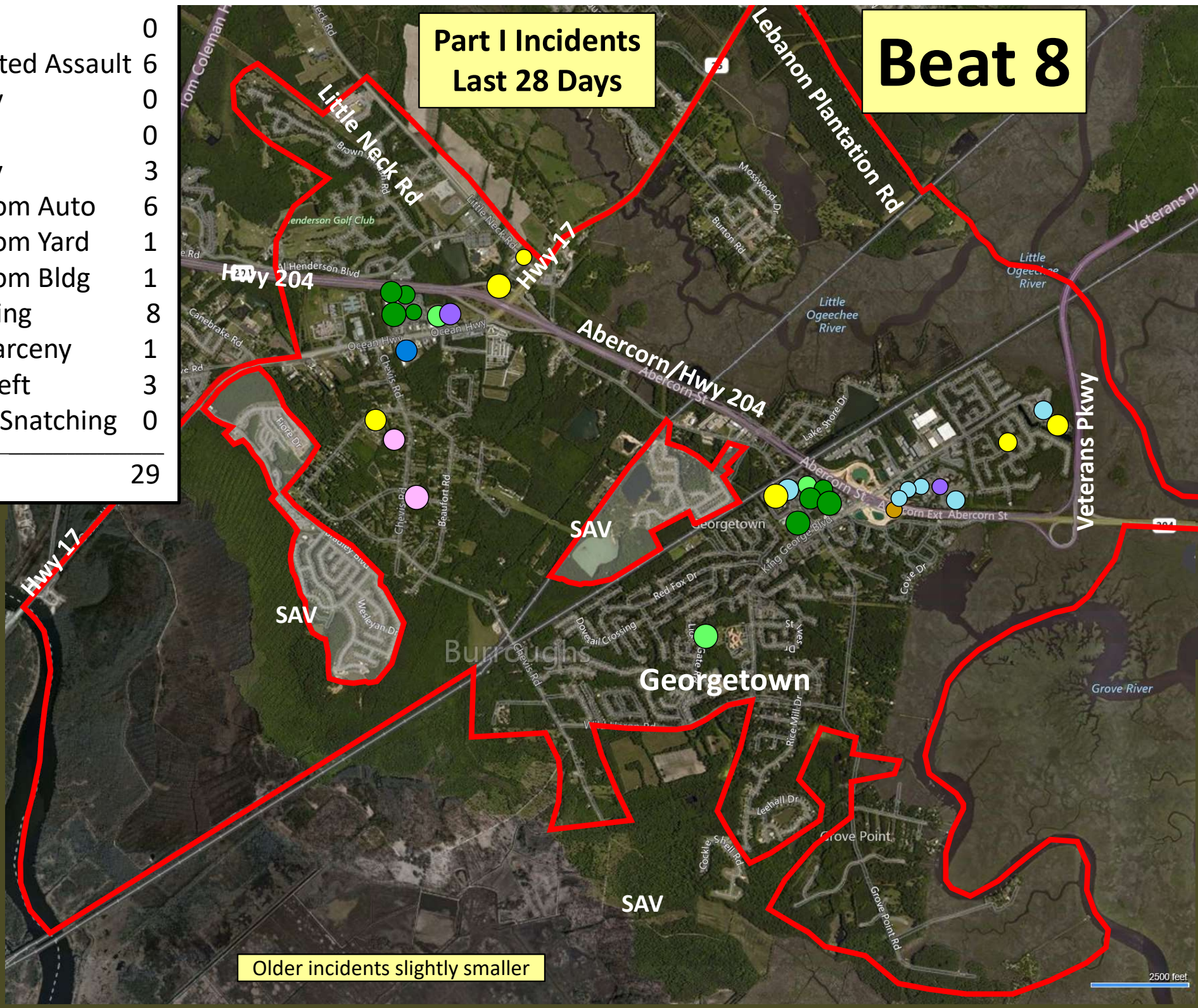
1

1

# Beat 8

## Part I Incidents Last 28 Days

Arson	0
Aggravated Assault	6
Robbery	0
Rape	0
Burglary	3
Theft from Auto	6
Theft from Yard	1
Theft from Bldg	1
Shoplifting	8
Other Larceny	1
Auto Theft	3
Sudden Snatching	0
<b>Total</b>	<b>29</b>



Older incidents slightly smaller

# Beat 9

Part I Incidents  
Last 28 Days

● Robbery	1
● Aggravated Assault	4
● Rape	0
● Burglary	2
● Theft from Auto	13
● Theft from Yard	3
● Theft from Building	4
● Shoplifting	2
● Other Larceny	0
● Auto Theft	2
● Sudden Snatching	0
● Arson	0
<b>Total</b>	<b>31</b>

