

Beat 1

Part I Incidents Last 28 Days

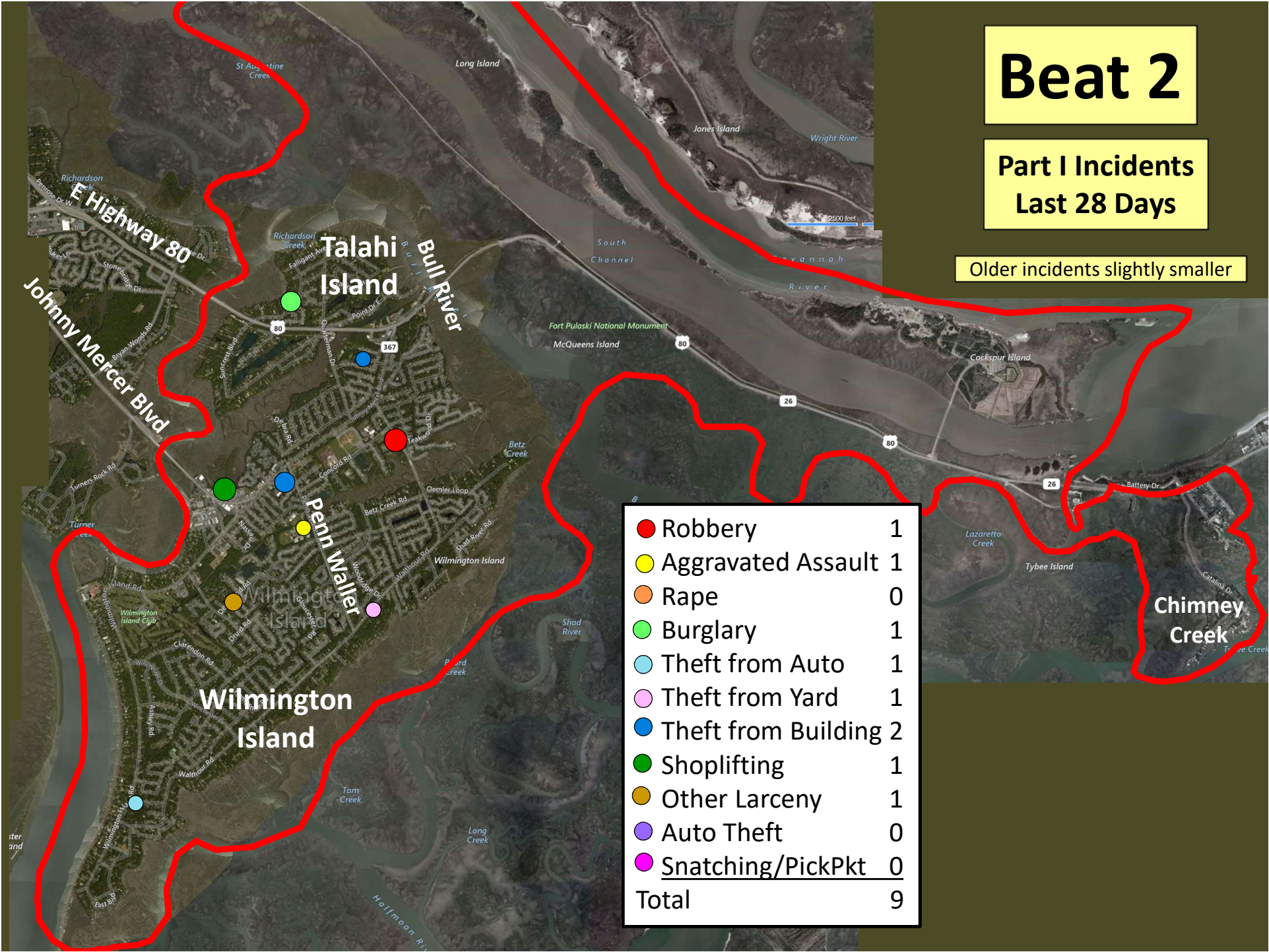
● Robbery	0
● Aggravated Assault	0
● Rape	0
● Burglary	2
● Theft from Auto	0
● Theft from Yard	0
● Theft from Building	0
● Shoplifting	0
● Other Larceny	1
● Auto Theft	0
● Snatching/PickPkt	0
Total	3

Older incidents slightly smaller

Beat 2

Part I Incidents Last 28 Days

Older incidents slightly smaller



The map shows Beat 2, which includes Talahi Island, Penn Waller, and Wilmington Island. A red outline marks the beat's boundary. Various streets and landmarks are labeled, including E Highway 80, Johnny Mercer Blvd, Bull River, and Fort Pulaski National Monument. Colored dots indicate incident locations: a red dot (Robbery) on Teakwood Dr, a yellow dot (Aggravated Assault) on David Rd, an orange dot (Rape) on David Rd, a green dot (Burglary) on Sun Creek Blvd, a light blue dot (Theft from Auto) on East Blvd, a pink dot (Theft from Yard) on Woodridge Dr, a blue dot (Theft from Building) on Olathe Rd, a green dot (Shoplifting) on Olathe Rd, a yellow dot (Other Larceny) on David Rd, a purple dot (Auto Theft) on Woodridge Dr, and a pink dot (Snatching/PickPkt) on Woodridge Dr.

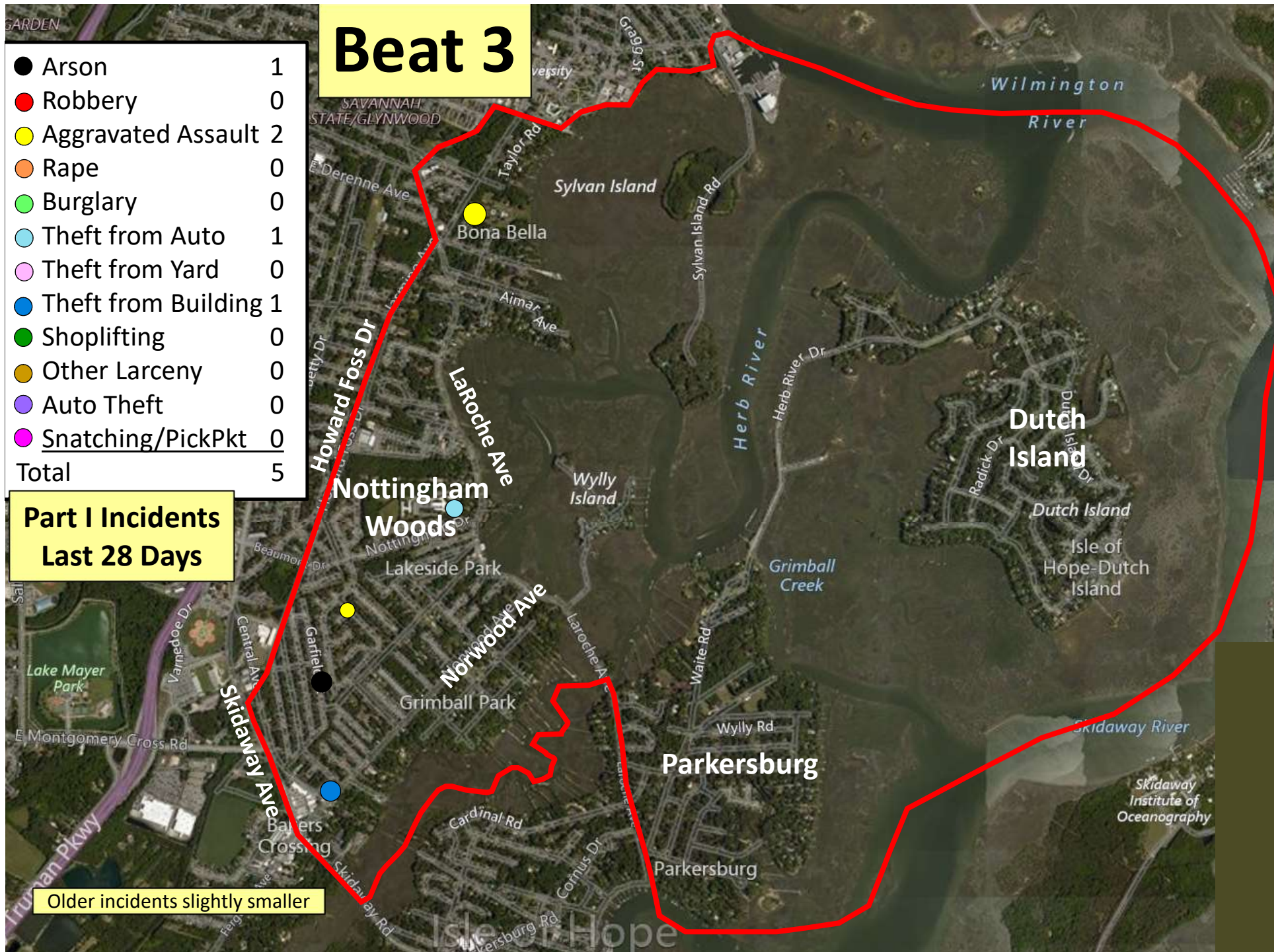
Robbery	1
Aggravated Assault	1
Rape	0
Burglary	1
Theft from Auto	1
Theft from Yard	1
Theft from Building	2
Shoplifting	1
Other Larceny	1
Auto Theft	0
Snatching/PickPkt	0
Total	9

Beat 3

● Arson	1
● Robbery	0
● Aggravated Assault	2
● Rape	0
● Burglary	0
● Theft from Auto	1
● Theft from Yard	0
● Theft from Building	1
● Shoplifting	0
● Other Larceny	0
● Auto Theft	0
● Snatching/PickPkt	0
Total	5

Part I Incidents Last 28 Days

Older incidents slightly smaller



Beat 4

Part I Incidents Last 28 Days

Robbery	0
Aggravated Assault	3
Rape	0
Burglary	1
Theft from Auto	1
Theft from Yard	1
Theft from Building	1
Shoplifting	5
Other Larceny	0
Auto Theft	0
Snatching/PickPkt	0
Total	12

Older incidents slightly smaller

The map displays the geographic distribution of 12 incidents within Beat 4. The incidents are represented by colored circles: 3 yellow circles (Aggravated Assault), 5 green circles (Shoplifting), 1 light blue circle (Theft from Auto), 1 pink circle (Theft from Yard), and 1 blue circle (Theft from Building). The map includes major roads such as E Montgomery Cross Rd, Harry Truman Pkwy, and Fergusson Ave, as well as local landmarks like Lake Mayer Park and Wormsloe Historic Site. The beat boundary is outlined in red, and the map is labeled with surrounding areas like Halcyon Bluff, Isle of Hope, and Wormsloe.

Beat 4

Part I Incidents Last 28 Days

Robbery	0
Aggravated Assault	3
Rape	0
Burglary	1
Theft from Auto	1
Theft from Yard	1
Theft from Building	1
Shoplifting	5
Other Larceny	0
Auto Theft	0
Snatching/PickPkt	0
Total	12

Older incidents slightly smaller

The map displays the geographic distribution of 12 incidents within Beat 4. The incidents are represented by colored circles: 3 yellow circles (Aggravated Assault), 5 green circles (Shoplifting), 1 light blue circle (Theft from Auto), 1 pink circle (Theft from Yard), and 1 blue circle (Theft from Building). The map includes major roads such as E Montgomery Cross Rd, Harry Truman Pkwy, and Fergusson Ave, as well as local landmarks like Lake Mayer Park and Wormsloe Historic Site. The beat boundary is outlined in red, and the map is labeled with surrounding areas like Halcyon Bluff, Isle of Hope, and Wormsloe.

Beat 4

Part I Incidents Last 28 Days

Robbery	0
Aggravated Assault	3
Rape	0
Burglary	1
Theft from Auto	1
Theft from Yard	1
Theft from Building	1
Shoplifting	5
Other Larceny	0
Auto Theft	0
Snatching/PickPkt	0
Total	12

Older incidents slightly smaller

The map displays the geographic distribution of 12 incidents within Beat 4. The incidents are represented by colored circles: 3 yellow circles (Aggravated Assault), 5 green circles (Shoplifting), 1 light blue circle (Theft from Auto), 1 pink circle (Theft from Yard), and 1 blue circle (Theft from Building). The map includes major roads such as E Montgomery Cross Rd, Harry Truman Pkwy, and Fergusson Ave, as well as local landmarks like Lake Mayer Park and Wormsloe Historic Site. The beat boundary is outlined in red, and the map is labeled with surrounding areas like Halcyon Bluff, Isle of Hope, and Wormsloe.

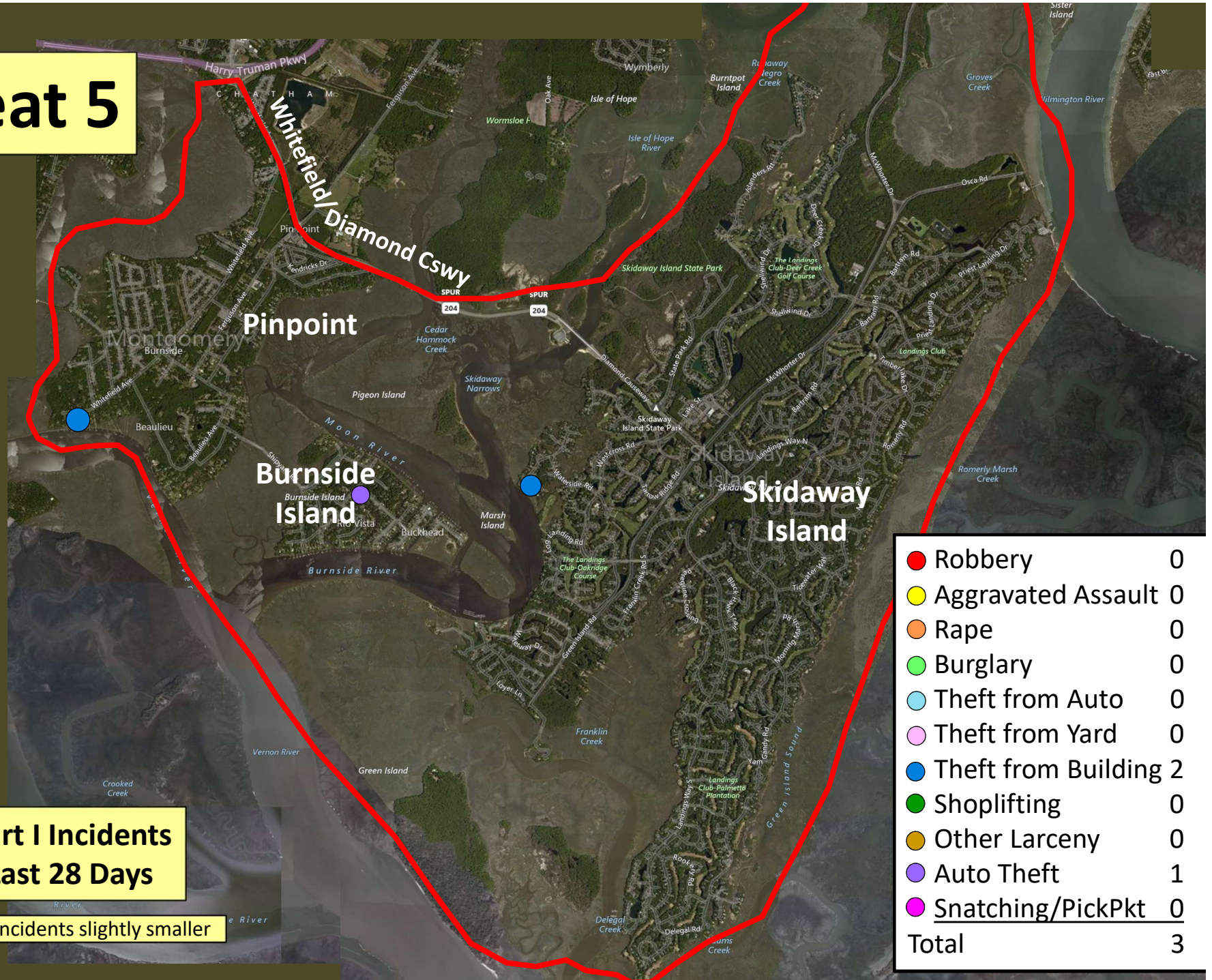
Beat 4

Part I Incidents
Last 28 Days

Robbery	0
Aggravated Assault	3
Rape	0
Burglary	1
Theft from Auto	1
Theft from Yard	1
Theft from Building	1
Shoplifting	5
Other Larceny	0
Auto Theft	0
Snatching/PickPkt	0
Total	12

Older incidents slightly smaller

Beat 5

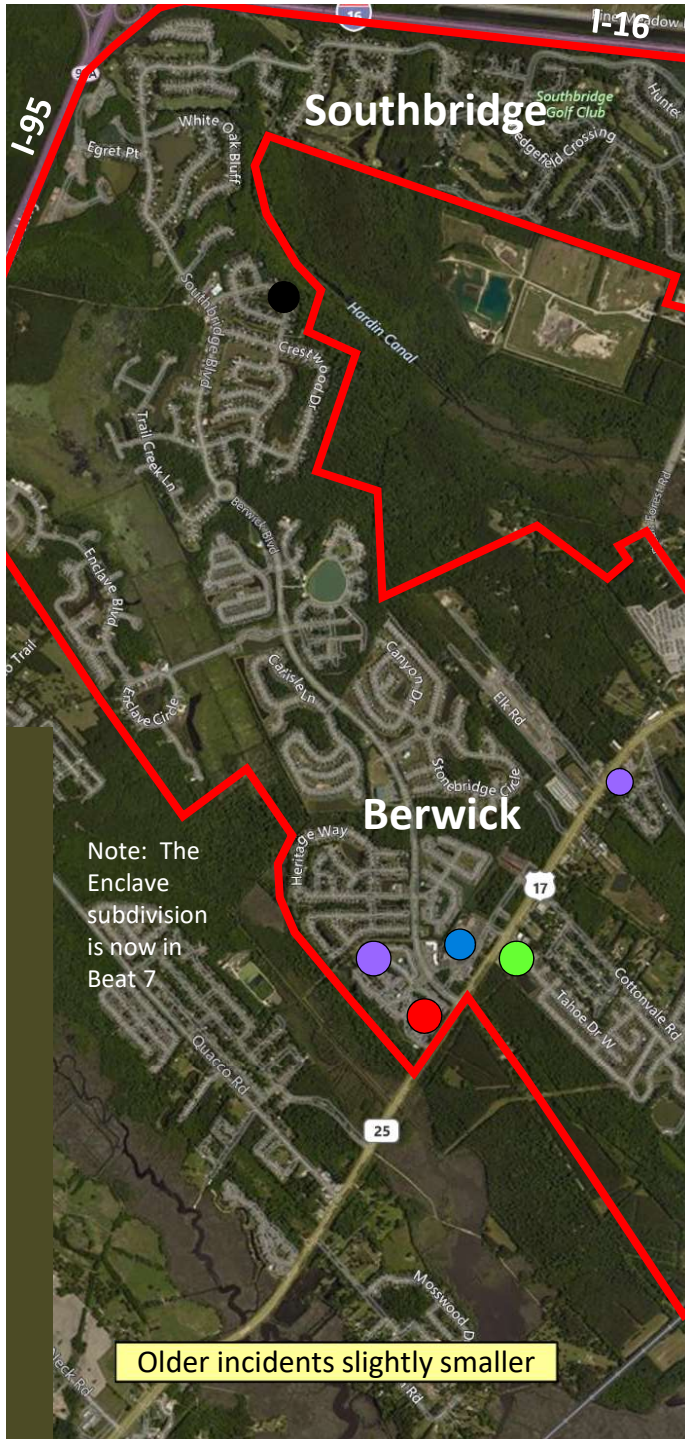


Beat 6

Part I Incidents
Last 28 Days

● Robbery	0
● Aggravated Assault	0
● Rape	0
● Burglary	0
● Theft from Auto	2
● Theft from Yard	1
● Theft from Building	0
● Shoplifting	0
● Other Larceny	1
● Auto Theft	0
● Snatching/PickPkt	0
Total	4

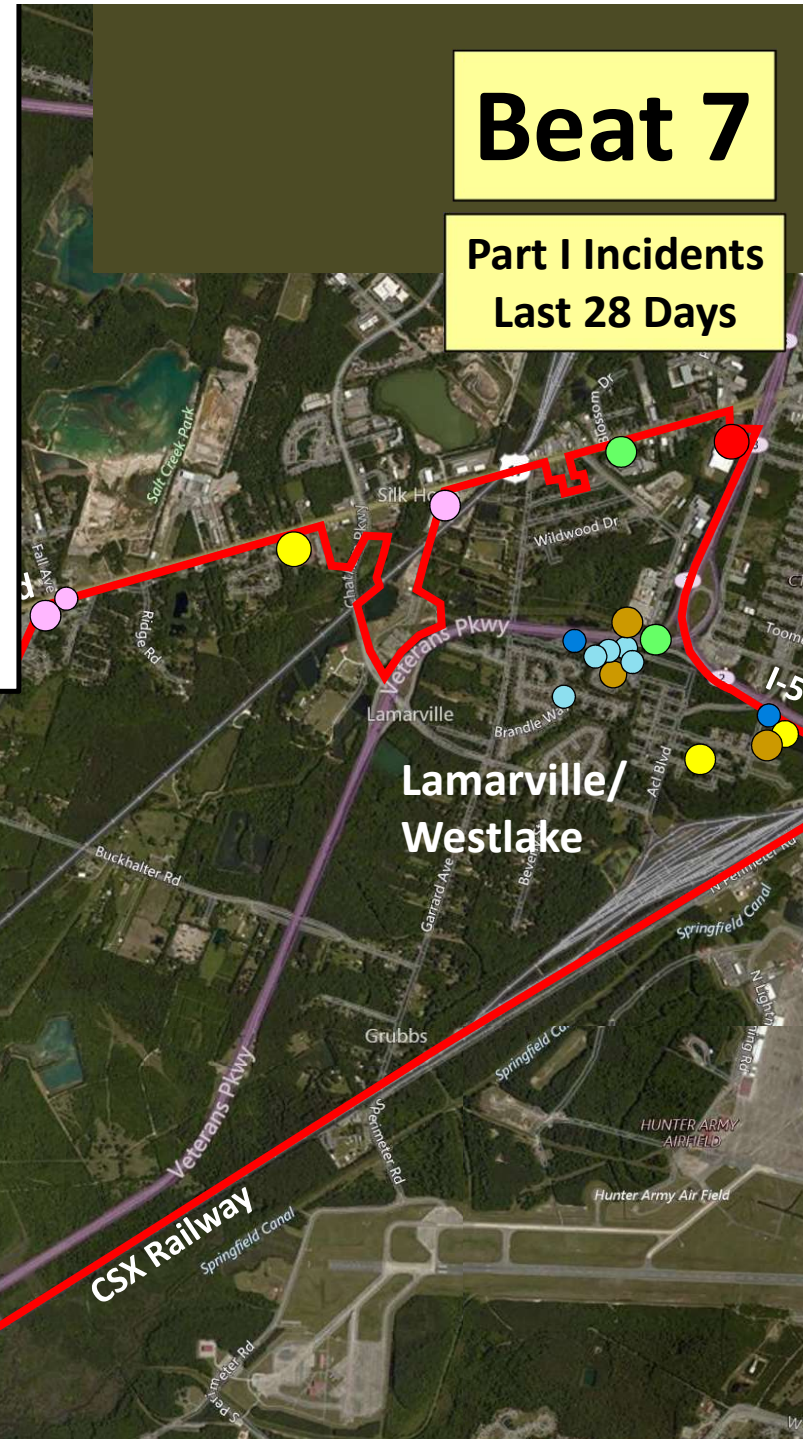
Older incidents slightly smaller



● Arson	1
● Robbery	2
● Aggravated Assault	3
● Rape	0
● Burglary	4
● Theft from Auto	5
● Theft from Yard	3
● Theft from Building	3
● Shoplifting	0
● Other Larceny	3
● Auto Theft	2
● Snatching/PickPkt	0
Total	26

Beat 7

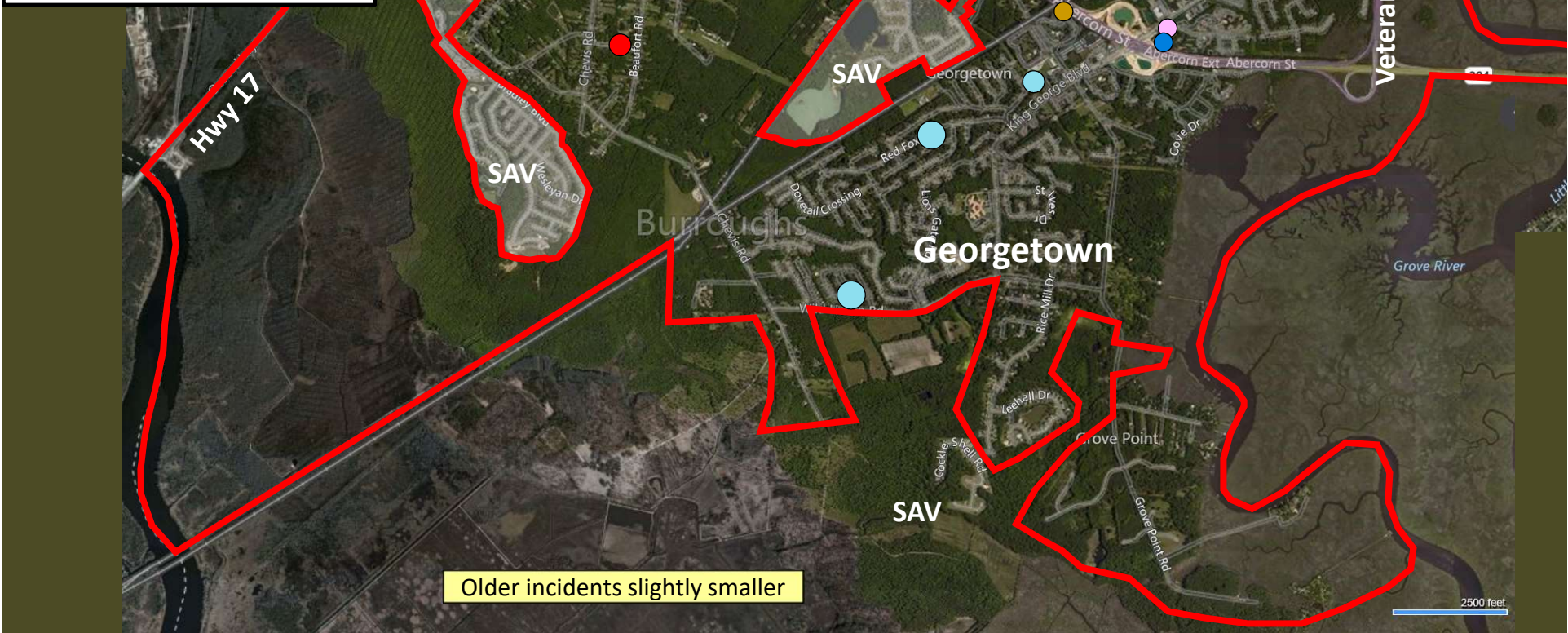
Part I Incidents
Last 28 Days



Part I Incidents
Last 28 Days

Beat 8

● Robbery	1
● Aggravated Assault	0
● Rape	0
● Burglary	1
● Theft from Auto	4
● Theft from Yard	1
● Theft from Bldg	1
● Shoplifting	17
● Other Larceny	1
● Auto Theft	1
● Snatching/PickPkt	0
Total	27



Older incidents slightly smaller

Beat 9

Part I Incidents Last 28 Days

Note: The
Enclave
subdivision
is now in
Beat 7

● Arson	1
● Robbery	0
● Aggravated Assault	1
● Rape	0
● Burglary	6
● Theft from Auto	3
● Theft from Yard	1
● Theft from Building	6
● Shoplifting	0
● Other Larceny	1
● Auto Theft	2
● Snatching/PickPkt	0
Total	21

