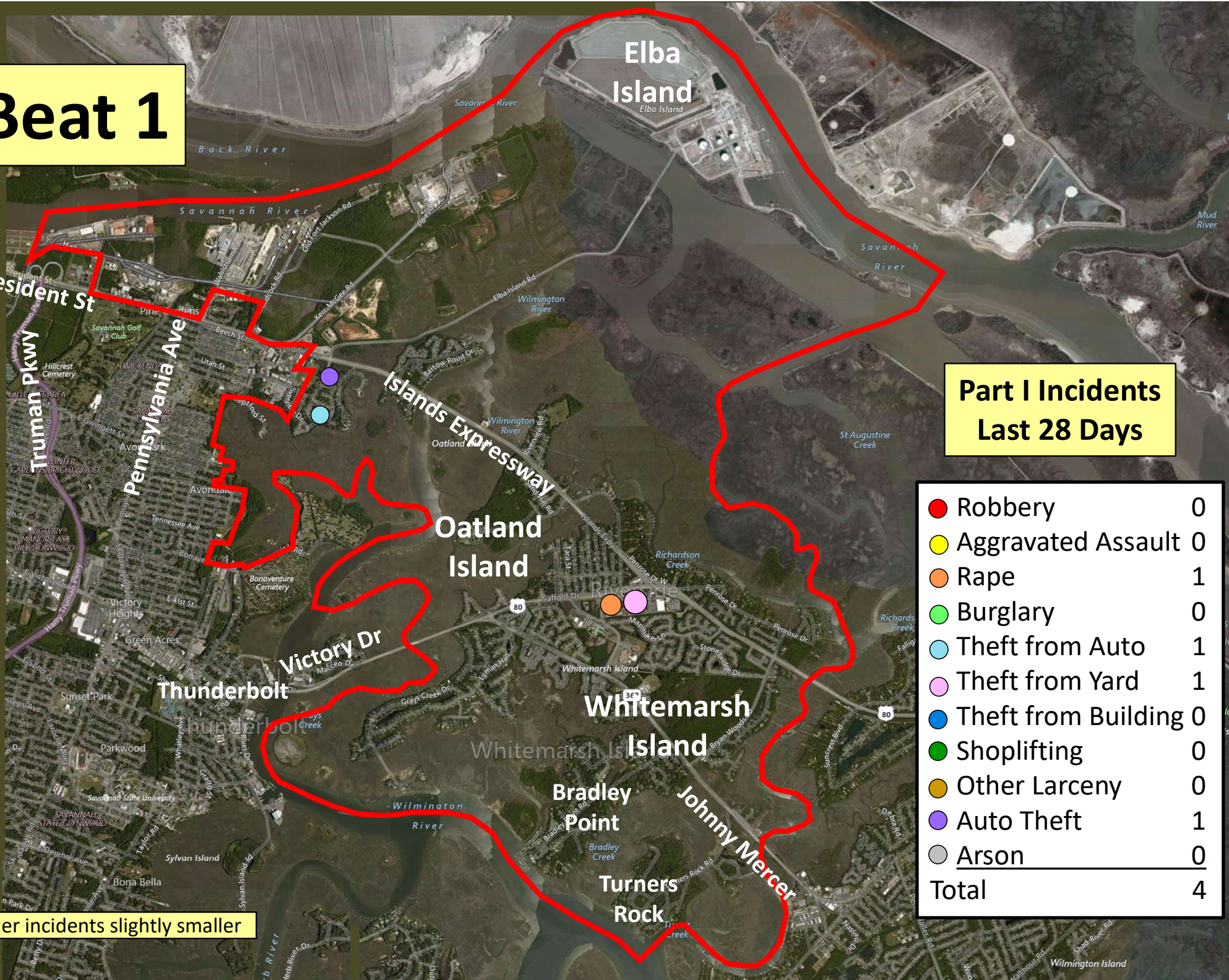


# Beat 1

## Part I Incidents Last 28 Days

|                       |          |
|-----------------------|----------|
| ● Robbery             | 0        |
| ● Aggravated Assault  | 0        |
| ● Rape                | 1        |
| ● Burglary            | 0        |
| ● Theft from Auto     | 1        |
| ● Theft from Yard     | 1        |
| ● Theft from Building | 0        |
| ● Shoplifting         | 0        |
| ● Other Larceny       | 0        |
| ● Auto Theft          | 1        |
| ● Arson               | 0        |
| <b>Total</b>          | <b>4</b> |

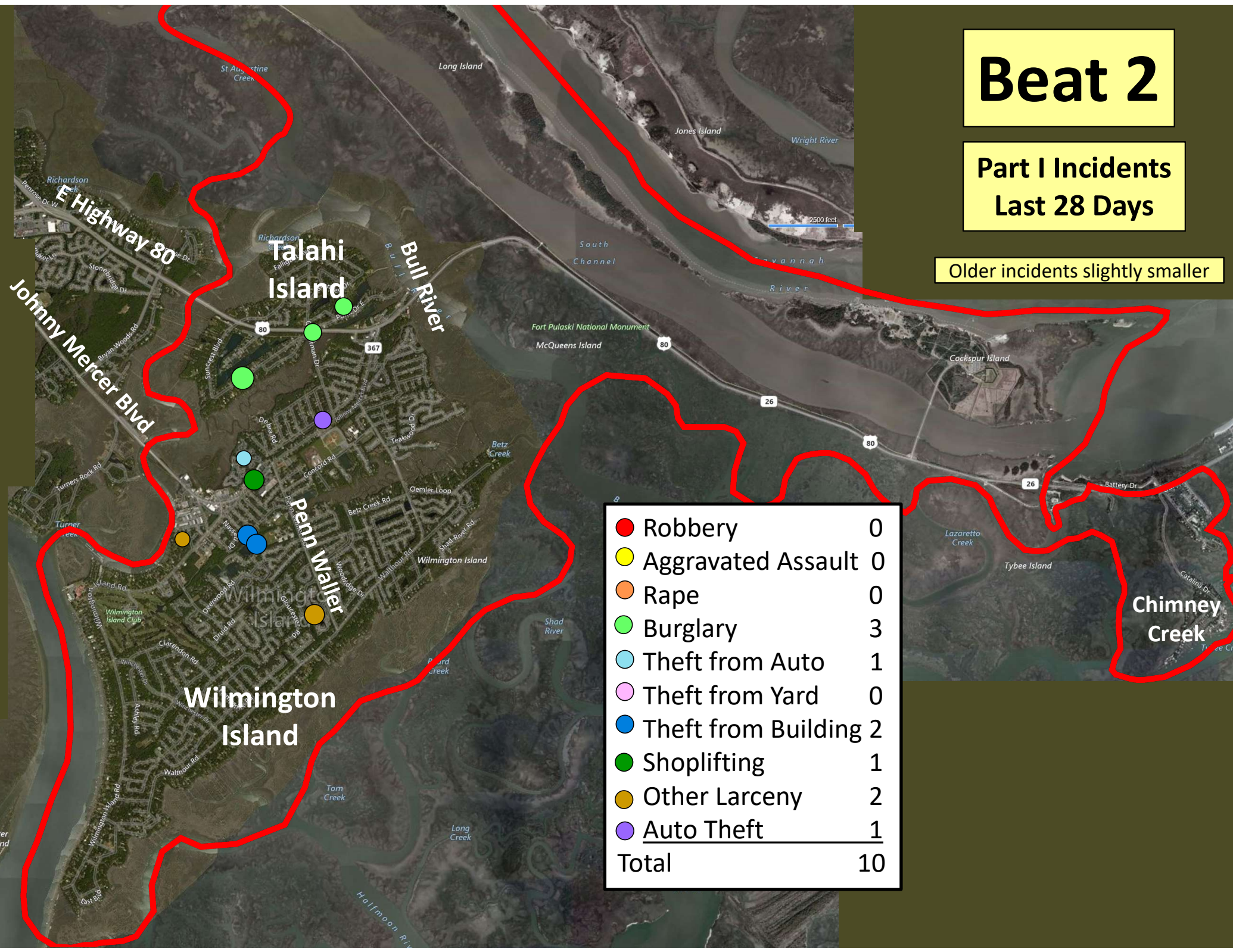
Older incidents slightly smaller



# Beat 2

Part I Incidents  
Last 28 Days

Older incidents slightly smaller



# Beat 3

|                       |          |
|-----------------------|----------|
| ● Robbery             | 1        |
| ● Aggravated Assault  | 0        |
| ● Rape                | 0        |
| ● Burglary            | 1        |
| ● Theft from Auto     | 0        |
| ● Theft from Yard     | 0        |
| ● Theft from Building | 1        |
| ● Shoplifting         | 1        |
| ● Other Larceny       | 0        |
| ● Sudden Snatching    | 0        |
| ● Auto Theft          | 1        |
| <b>Total</b>          | <b>5</b> |

## Part I Incidents Last 28 Days



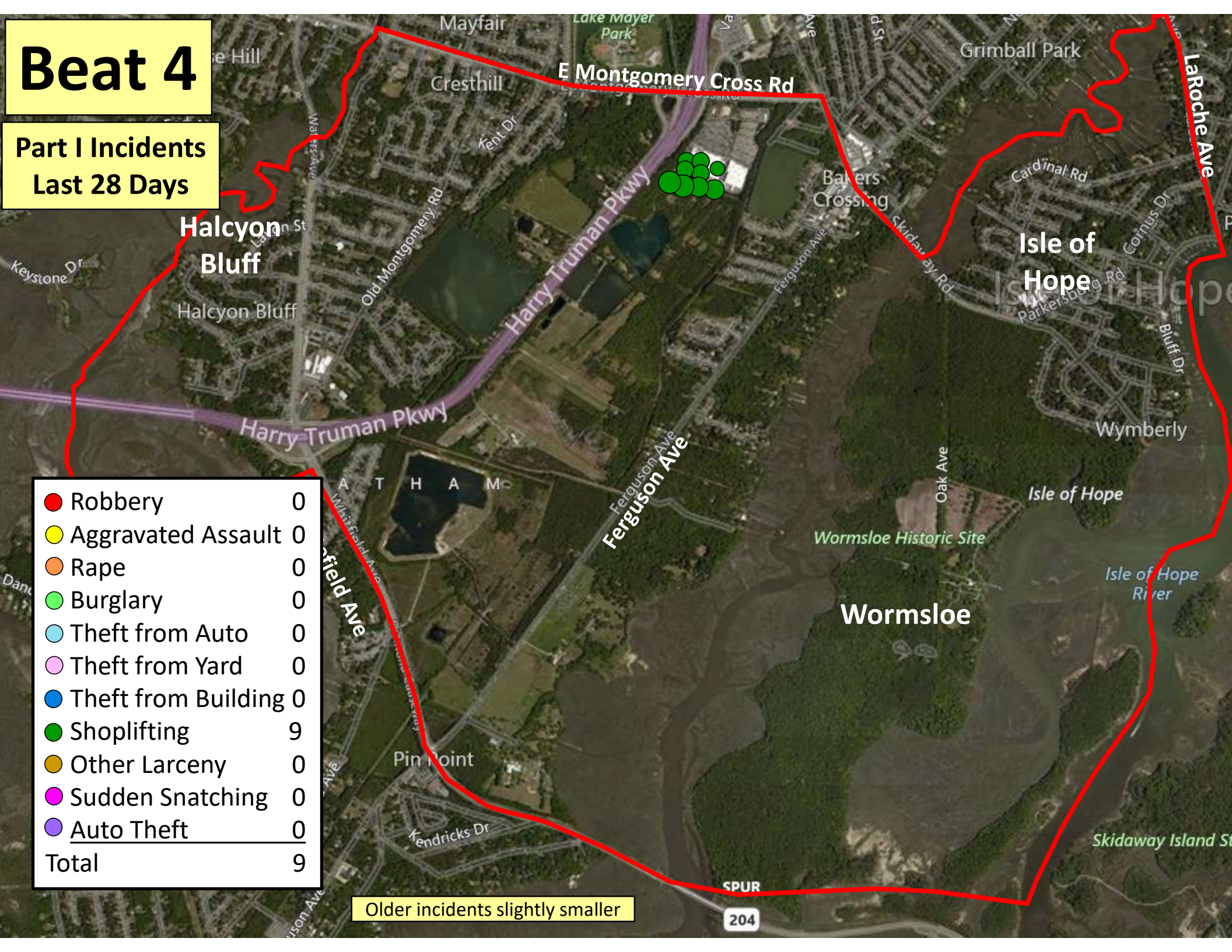
Older incidents slightly smaller

# Beat 4

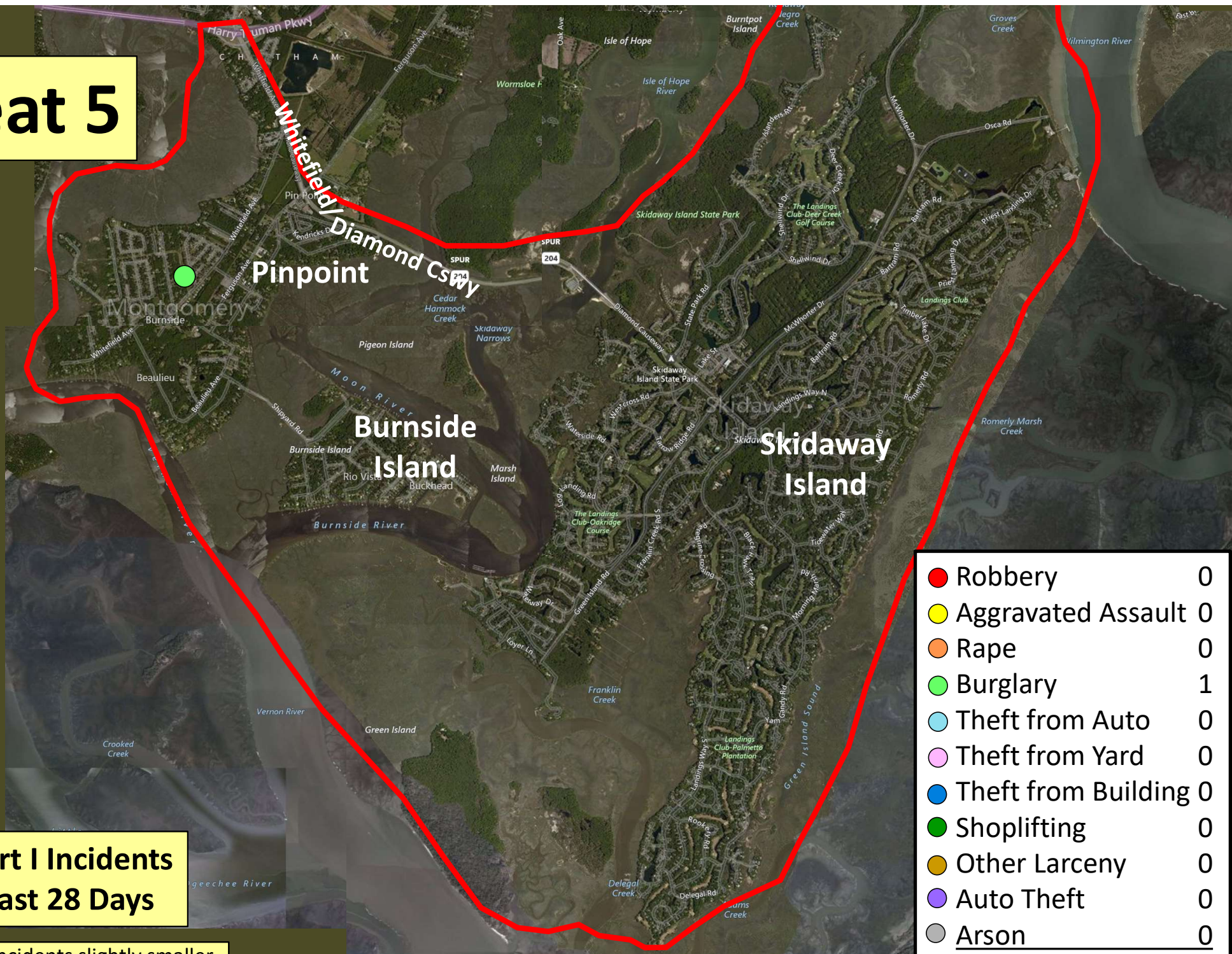
Part I Incidents  
Last 28 Days

|                       |          |
|-----------------------|----------|
| ● Robbery             | 0        |
| ● Aggravated Assault  | 0        |
| ● Rape                | 0        |
| ● Burglary            | 0        |
| ● Theft from Auto     | 0        |
| ● Theft from Yard     | 0        |
| ● Theft from Building | 0        |
| ● Shoplifting         | 9        |
| ● Other Larceny       | 0        |
| ● Sudden Snatching    | 0        |
| ● Auto Theft          | 0        |
| <b>Total</b>          | <b>9</b> |

Older incidents slightly smaller



# Beat 5



**Part I Incidents  
Last 28 Days**

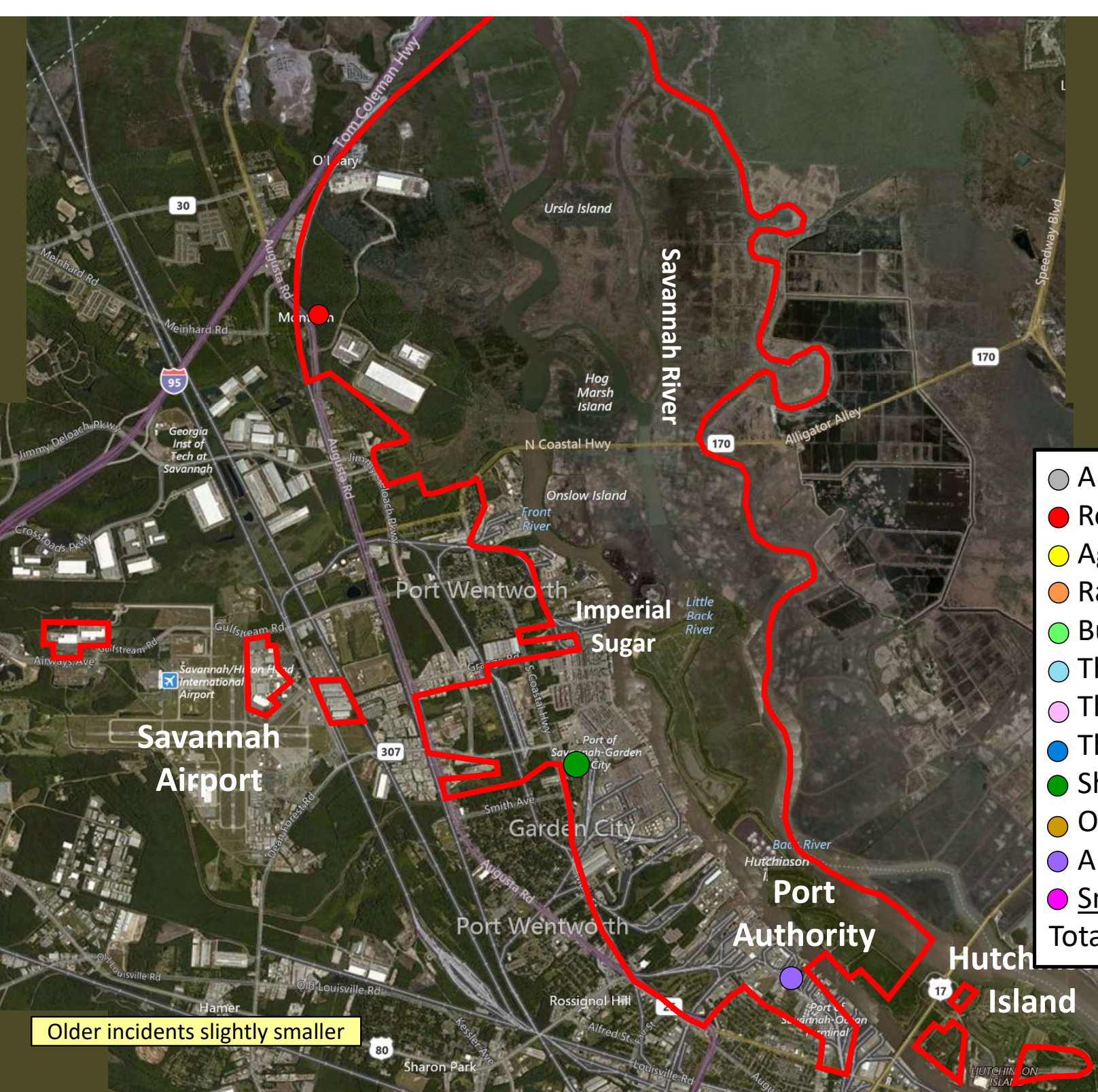
Older incidents slightly smaller

|                       |          |
|-----------------------|----------|
| ● Robbery             | 0        |
| ● Aggravated Assault  | 0        |
| ● Rape                | 0        |
| ● Burglary            | 1        |
| ● Theft from Auto     | 0        |
| ● Theft from Yard     | 0        |
| ● Theft from Building | 0        |
| ● Shoplifting         | 0        |
| ● Other Larceny       | 0        |
| ● Auto Theft          | 0        |
| ● Arson               | 0        |
| <b>Total</b>          | <b>1</b> |

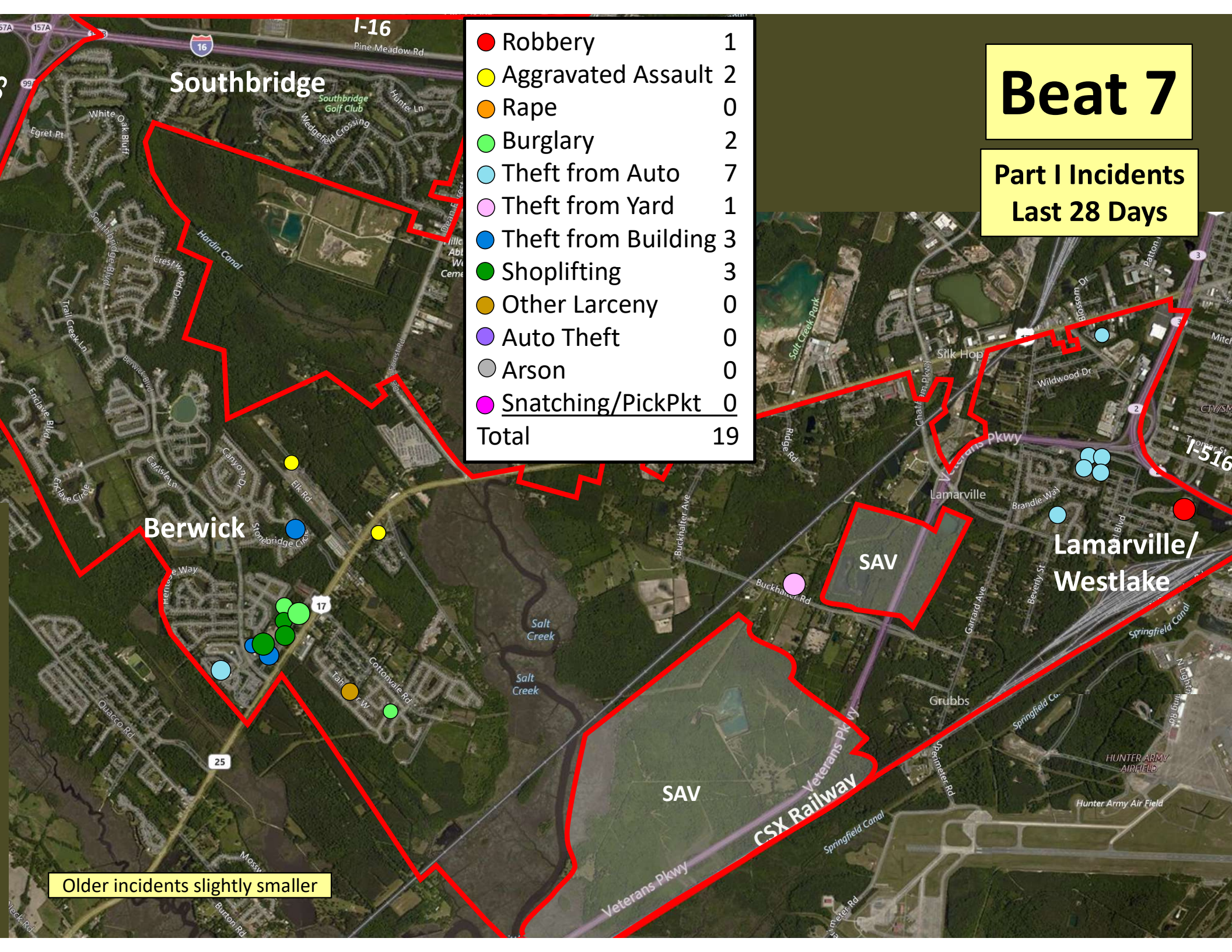
# Beat 6

Part I Incidents  
Last 28 Days

|                     |          |
|---------------------|----------|
| Arson               | 0        |
| Robbery             | 1        |
| Aggravated Assault  | 0        |
| Rape                | 0        |
| Burglary            | 0        |
| Theft from Auto     | 0        |
| Theft from Yard     | 0        |
| Theft from Building | 0        |
| Shoplifting         | 1        |
| Other Larceny       | 0        |
| Auto Theft          | 1        |
| Snatching/PickPkt   | 0        |
| <b>Total</b>        | <b>3</b> |



Older incidents slightly smaller



|                       |           |
|-----------------------|-----------|
| ● Robbery             | 1         |
| ● Aggravated Assault  | 2         |
| ● Rape                | 0         |
| ● Burglary            | 2         |
| ● Theft from Auto     | 7         |
| ● Theft from Yard     | 1         |
| ● Theft from Building | 3         |
| ● Shoplifting         | 3         |
| ● Other Larceny       | 0         |
| ● Auto Theft          | 0         |
| ● Arson               | 0         |
| ● Snatching/PickPkt   | 0         |
| <b>Total</b>          | <b>19</b> |

# Beat 7

Part I Incidents  
Last 28 Days

Older incidents slightly smaller

SAV

SAV  
CSX Railway

Lamarville/  
Westlake

I-516

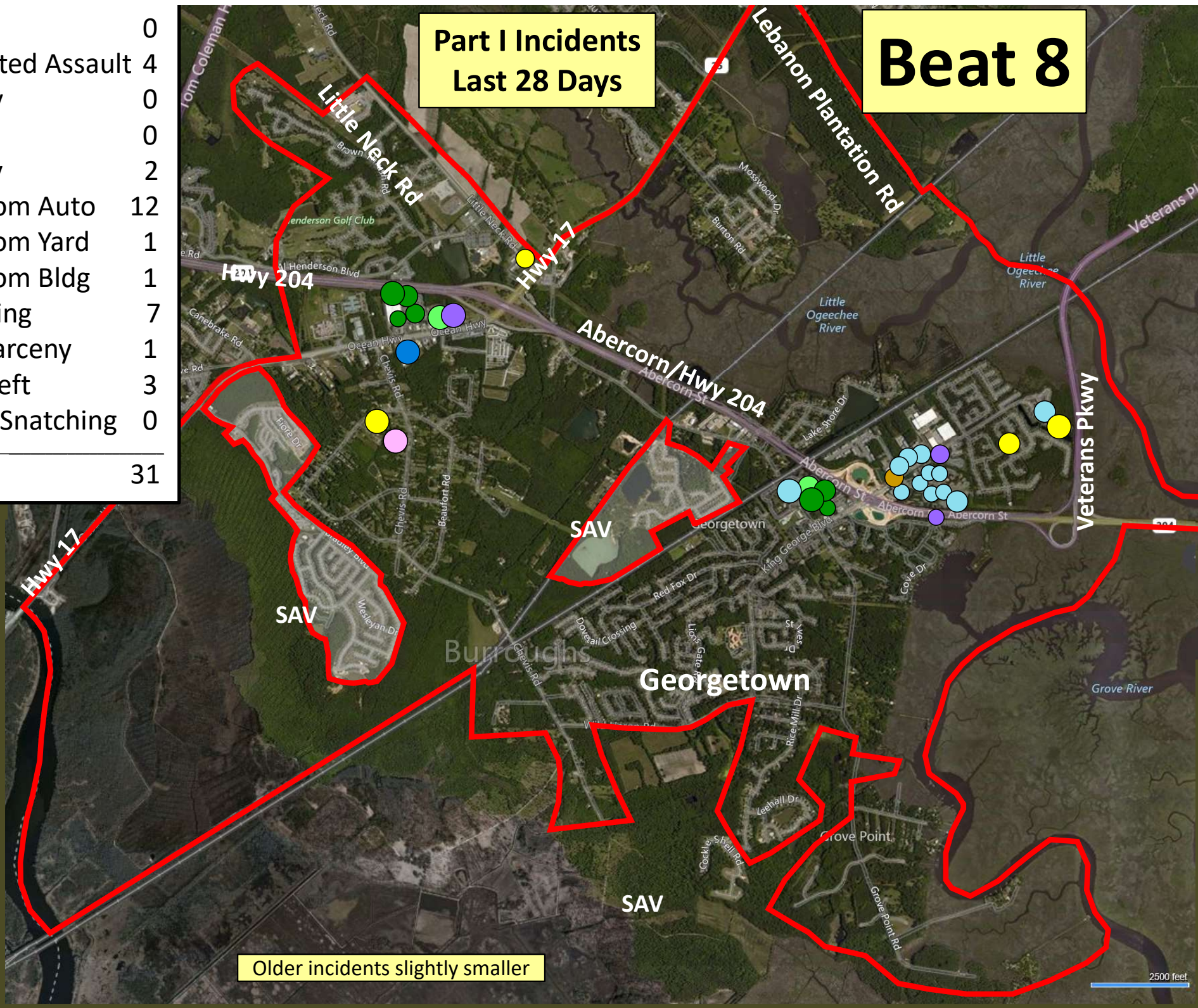
I-16  
Southbridge

Berwick

# Beat 8

## Part I Incidents Last 28 Days

|                    |           |
|--------------------|-----------|
| Arson              | 0         |
| Aggravated Assault | 4         |
| Robbery            | 0         |
| Rape               | 0         |
| Burglary           | 2         |
| Theft from Auto    | 12        |
| Theft from Yard    | 1         |
| Theft from Bldg    | 1         |
| Shoplifting        | 7         |
| Other Larceny      | 1         |
| Auto Theft         | 3         |
| Sudden Snatching   | 0         |
| <b>Total</b>       | <b>31</b> |



Older incidents slightly smaller

# Beat 9

Part I Incidents  
Last 28 Days

|                       |           |
|-----------------------|-----------|
| ● Robbery             | 0         |
| ● Aggravated Assault  | 3         |
| ● Rape                | 0         |
| ● Burglary            | 2         |
| ● Theft from Auto     | 14        |
| ● Theft from Yard     | 3         |
| ● Theft from Building | 3         |
| ● Shoplifting         | 2         |
| ● Other Larceny       | 0         |
| ● Auto Theft          | 2         |
| ● Sudden Snatching    | 0         |
| ● Arson               | 0         |
| <b>Total</b>          | <b>29</b> |



Older incidents slightly smaller