



2024

# HURRICANE PREPAREDNESS

Chatham Emergency Management Agency



# Road Map to Preparedness

**2024 Season Information**

**Chatham County Threats and Hazards**

**The More You Know!**

**Preparing for the Storm**

**Evacuation**

**After a Storm**





# HURRICANE SEASON FORECAST

# 2024

## Colorado State University Hurricane Season Forecast

NAMED STORMS

23

HURRICANES

11

MAJOR HURRICANES

5





# HURRICANE SEASON AVERAGES

NAMED STORMS

14

HURRICANES

7

MAJOR HURRICANES

3



# Threats and Hazards

Hurricanes and Tropical Storms can produce several hazards within Chatham County:

- Tornadoes
- Storm Surge
- Excessive Rainfall
- Flooding
- High Surf and Rip Currents





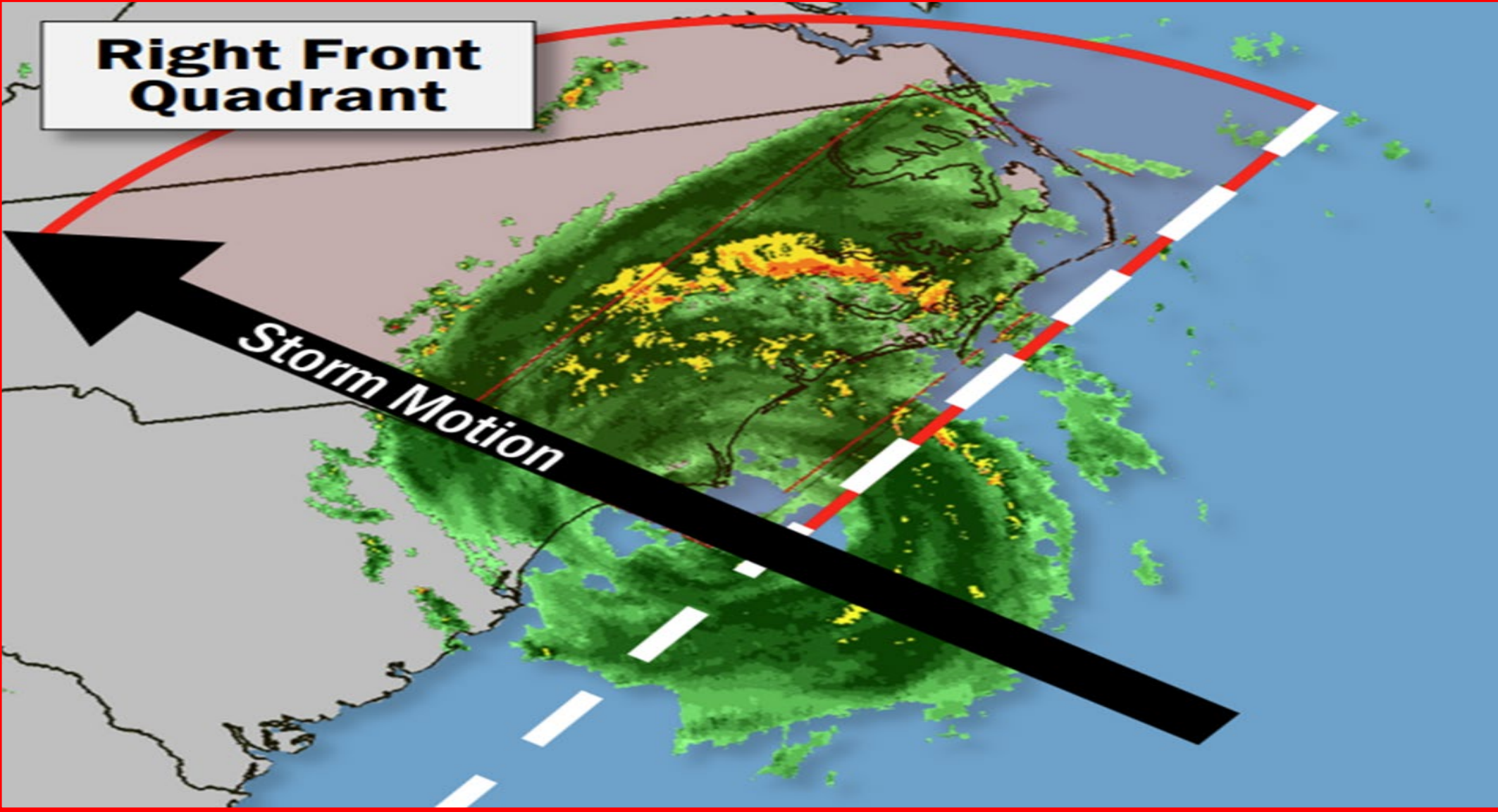
# What is Storm Surge?

- An abnormal rise of sea level generated by storm driven winds and atmospheric pressure
- Can vary in severity depending on rainfall, tides, and river input
- Can be caused by either tropical storms or hurricanes



**Right Front  
Quadrant**

**Storm Motion**









# NO Storm Surge



**LEGEND**  
 — Major Roads

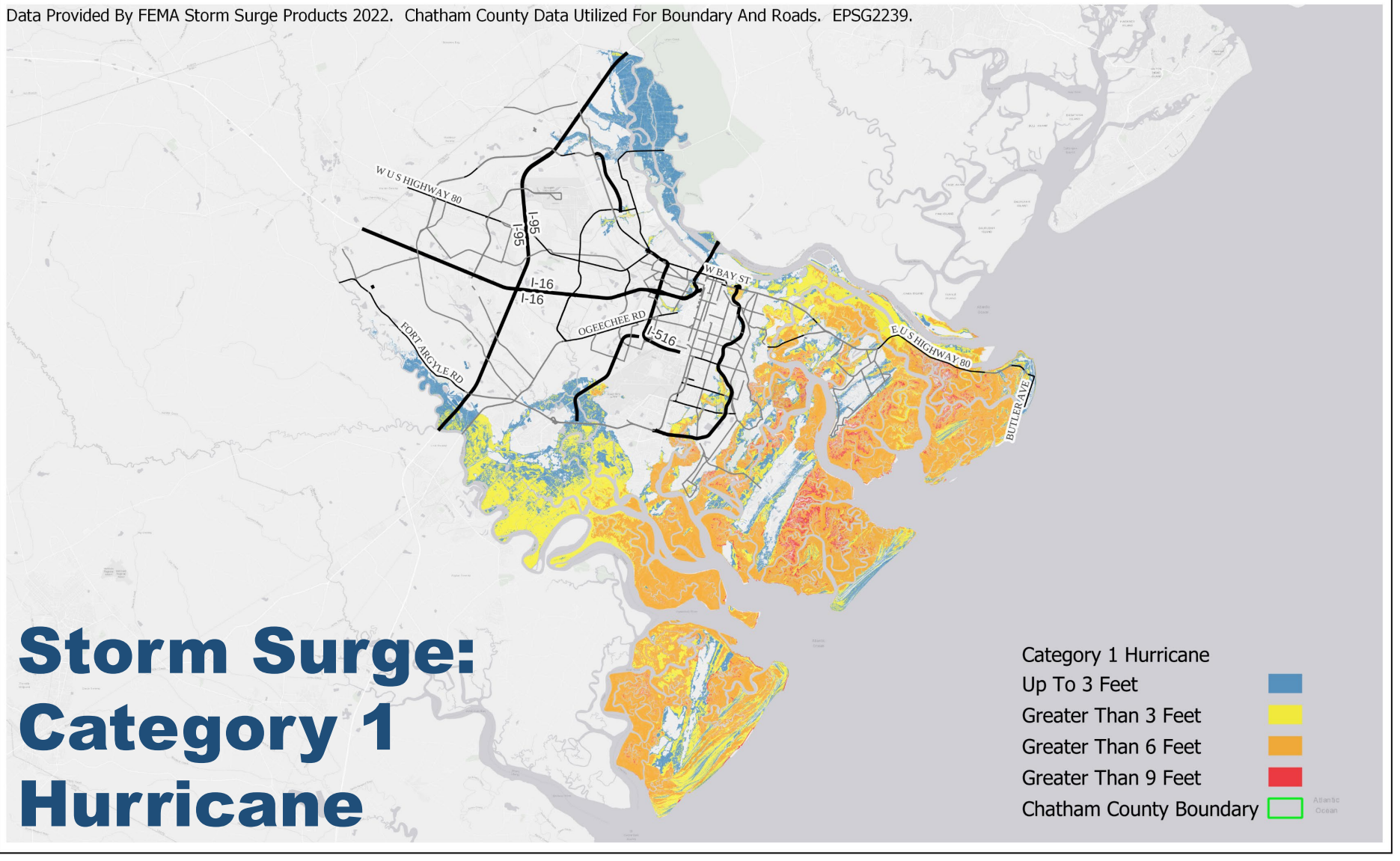
DATA: DERIVED OF 2021 STORM SURGE  
 BASED OFF THE 2018 LIDAR DATASET  
 MAP DATE: 08/04/2021  
 PRODUCED BY: DAVID ANDERSON

CHATHAM COUNTY, GEORGIA

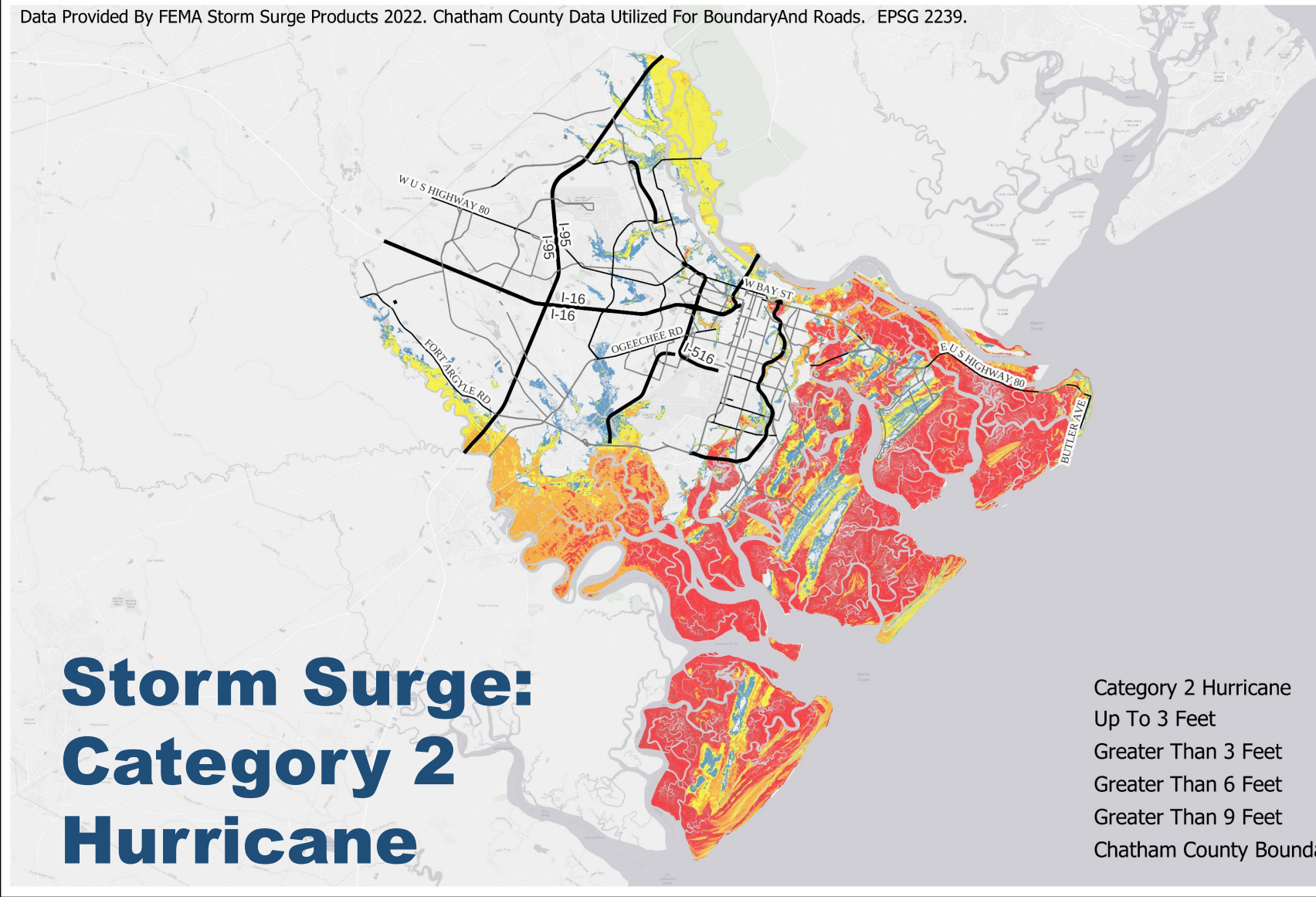
0 2 4 8 Miles



Data Provided By FEMA Storm Surge Products 2022. Chatham County Data Utilized For Boundary And Roads. EPSG2239.



Data Provided By FEMA Storm Surge Products 2022. Chatham County Data Utilized For Boundary And Roads. EPSG 2239.



# Storm Surge: Category 2 Hurricane

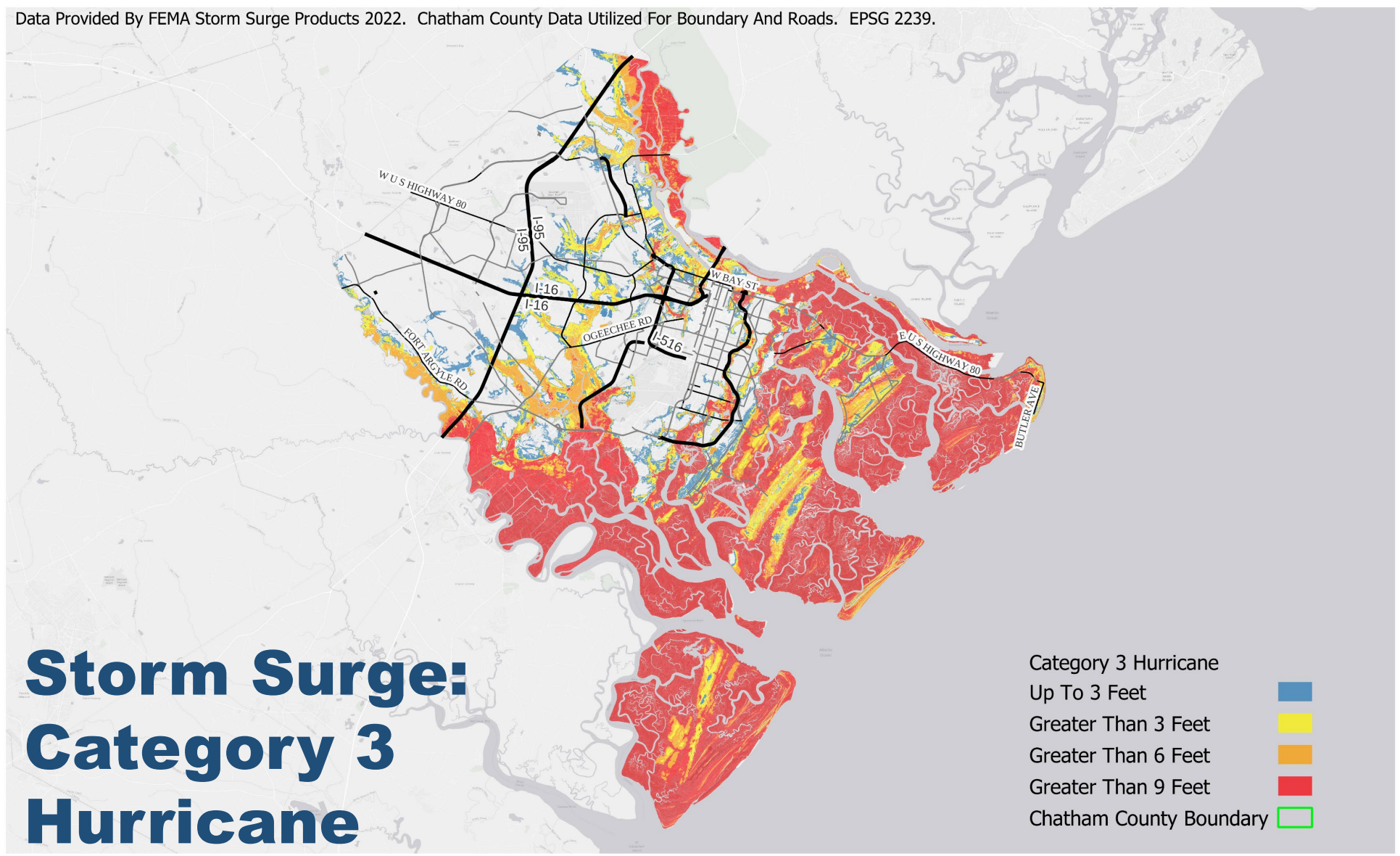
Category 2 Hurricane  
Up To 3 Feet  
Greater Than 3 Feet  
Greater Than 6 Feet  
Greater Than 9 Feet  
Chatham County Boundary



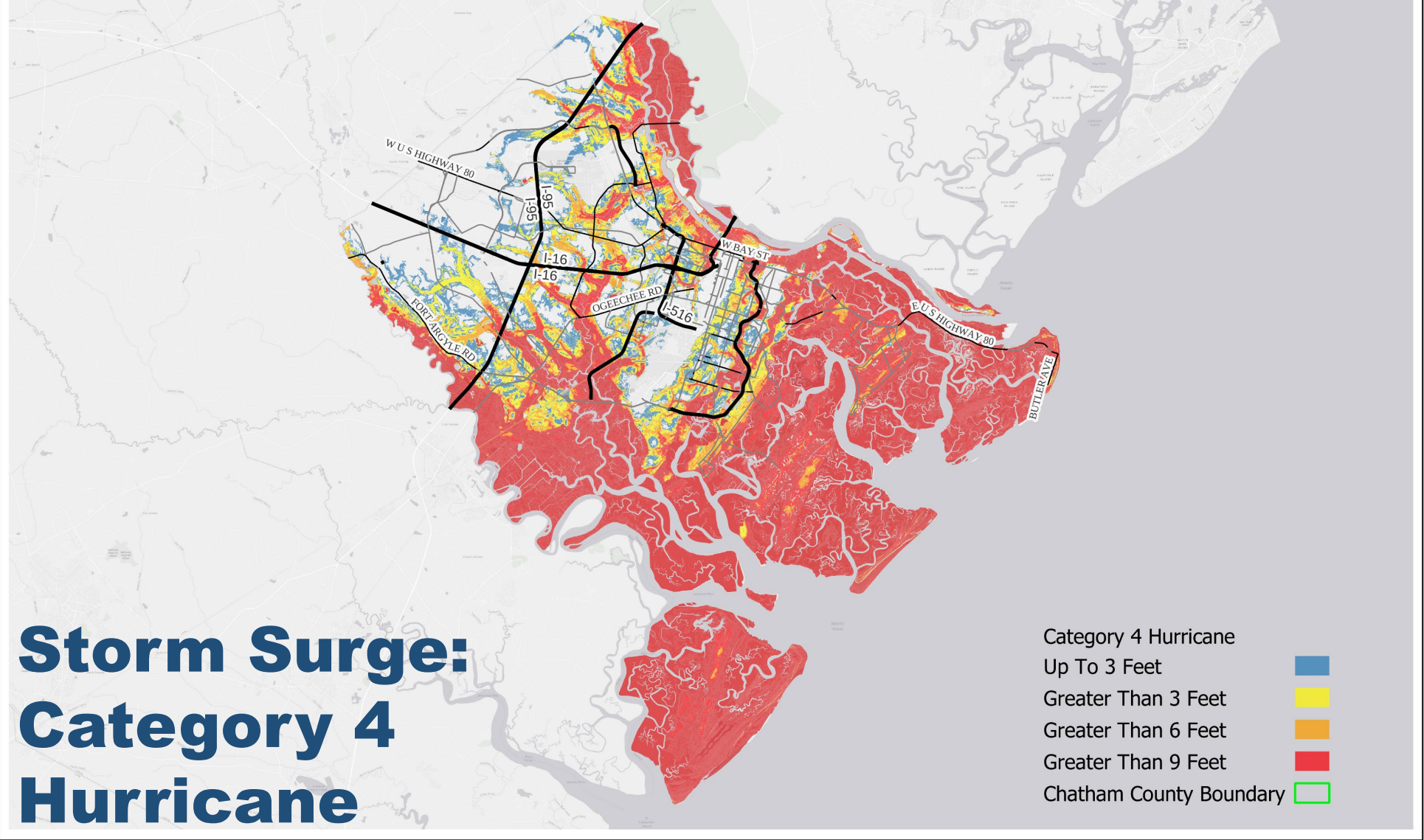
Data Provided By FEMA Storm Surge Products 2022. Chatham County Data Utilized For Boundary And Roads. EPSG 2239.

# Storm Surge: Category 3 Hurricane

Category 3 Hurricane  
Up To 3 Feet ■  
Greater Than 3 Feet ■  
Greater Than 6 Feet ■  
Greater Than 9 Feet ■  
Chatham County Boundary □

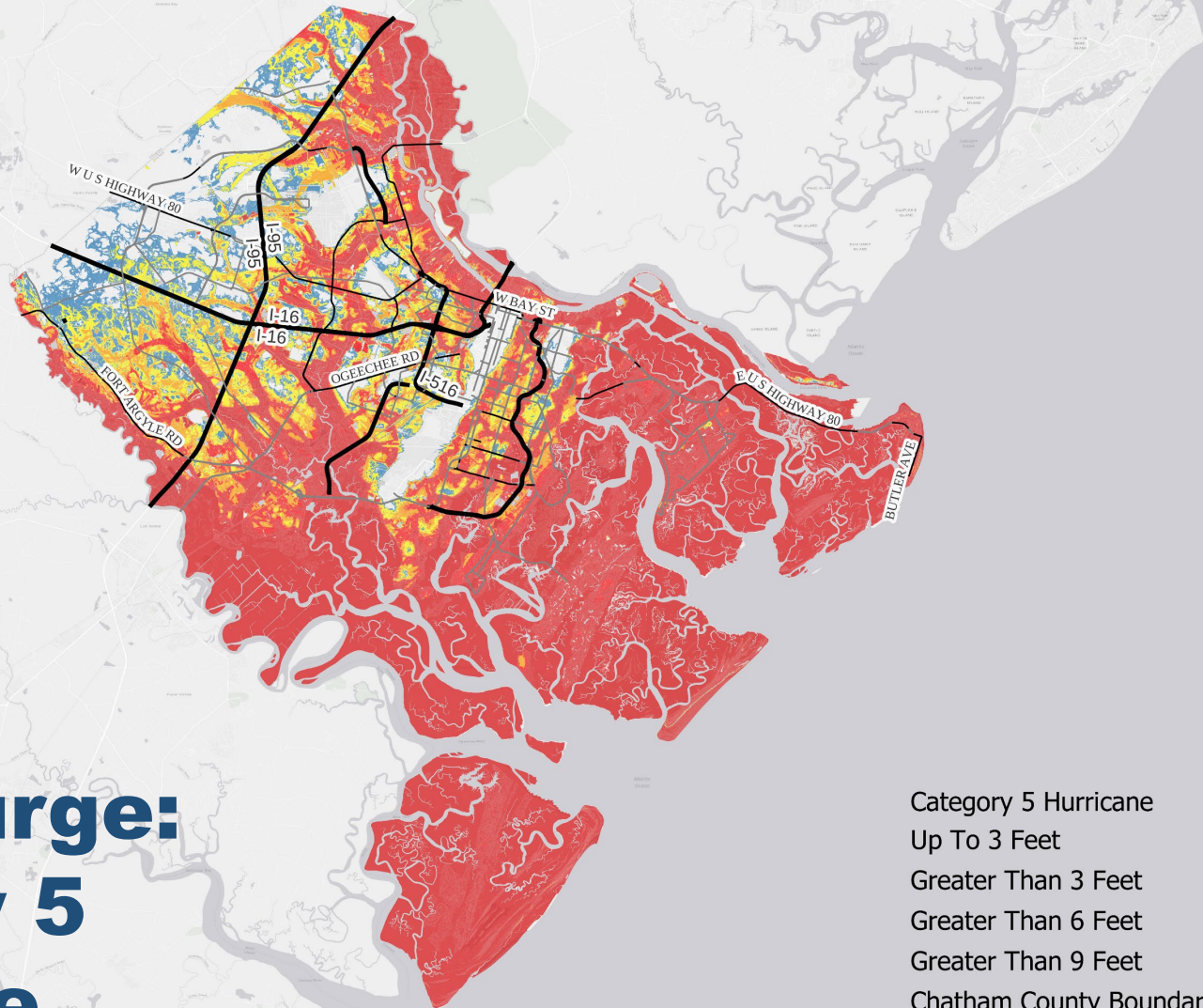


Data Provided By FEMA Storm Surge Products 2022. Chatham County Data Utilized For Boundary And Roads. EPSG 2239.



Data Provided By FEMA Storm Surge Products 2022. Chatham County Data Utilized For Boundary And Roads. EPSG 2239.

# Storm Surge: Category 5 Hurricane








Category 5 Hurricane  
Up To 3 Feet  
Greater Than 3 Feet  
Greater Than 6 Feet  
Greater Than 9 Feet  
Chatham County Boundary





# Factors That Influence Storm Surge

- 
- **Storm Intensity**
    - Stronger winds will produce a higher surge
  - **Size**
    - A larger storm will produce higher surge
      - ❖ Why? Winds are pushing on a larger area of the ocean and the storm will typically last longer
  - **Storm Forward Speed**
    - **Slower System**
      - ❖ A higher surge is produced inland because water has time to get into the bays, sounds and other enclosed bodies of water
    - **Faster System**
      - ❖ A higher surge is produced on the open coast-Tybee Island and other coastal areas
  - **Angle of Approach**
- 
- 
- 
- 



# How to Stay Informed

- CEMA Alerts
  - Text **CEMA** to **77295**
- CEMA's website-  
[ChathamEmergency.org](http://ChathamEmergency.org)
- Disaster website-  
[ready.chathamcountyga.gov](http://ready.chathamcountyga.gov)
- Social Media
  - @ChathamEMA
  - Be sure they are official sites!
  - Don't create OR share misinformation
- NOAA Weather Radio
  - If you are still in Chatham County, this will allow you to receive local weather alerts, immediately





# Prepare Your Family

- Develop an Evacuation Plan
  - Chatham County resident? You NEED an evacuation plan!
  - Destination could vary on the storm
  - Run from the water/ Hide from the wind
- Create a Communication Plan
  - Text messages are more reliable when systems are overwhelmed
- Assemble Disaster Supplies
  - Staying at home
  - Evacuating the community



# Home Emergency Kit



- Water
- Non-Perishable Food
- Manual Can Opener
- Flashlight(s)
- Extra Batteries
- Duct Tape
- Lighter and matches
- Evacuation Kit!
- First aid kit
- Work gloves
- Portable Device charger
- Entertainment Options (Adults & Kids)
- Comfort Items
- **Extra cash**
- Paper products (napkins, plates, etc)
- Hand Sanitizer
- Weather Radio!
- Whistle
- Local Map (printed)
- Personal Hygiene Items (Extra Supplies)

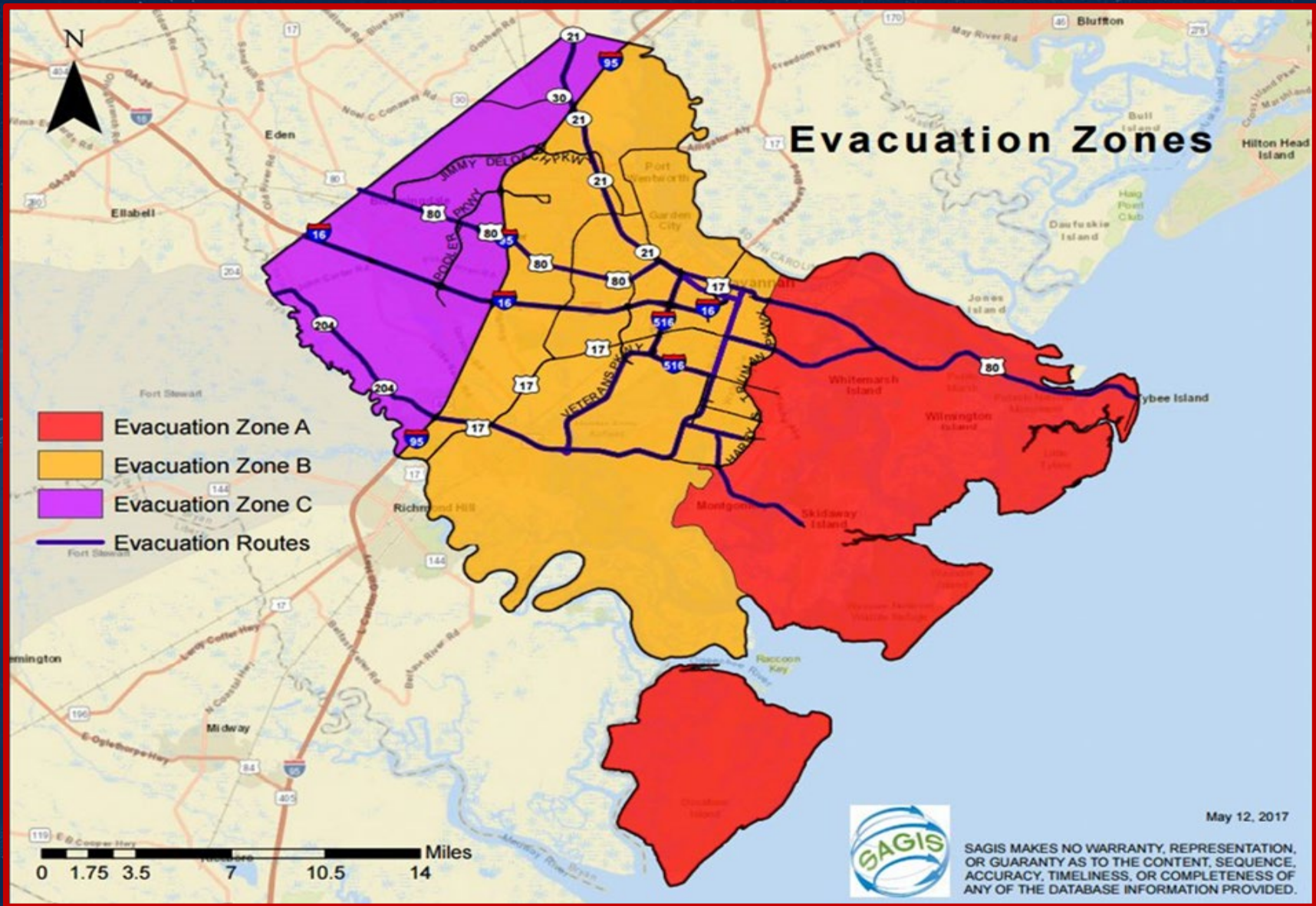


# Evacuation Emergency Kit



- Quick Access/Storage
  - 5-gallon bucket
- Plan for at least 3-5 days
  - Water (one gallon/person/day)
  - Non-perishable food (Manual Can Opener)
  - Important medication/prescriptions
- Essential Devices and Chargers
  - Hard drives, computers, tablets, etc.
- Copies of important documents
  - Insurance, Birth Certificate(s), Passport(s)
- Hygiene Items
- **Extra Cash**, if possible





# Evacuation Terminology

- Evacuation Order
  - A general statement used to encourage residents to evacuate
- Mandatory Evacuation Order
  - An Executive Directive requiring all residents, visitors, businesses and anyone else in the target area to evacuate
  - **Personal discretion is NOT an option**



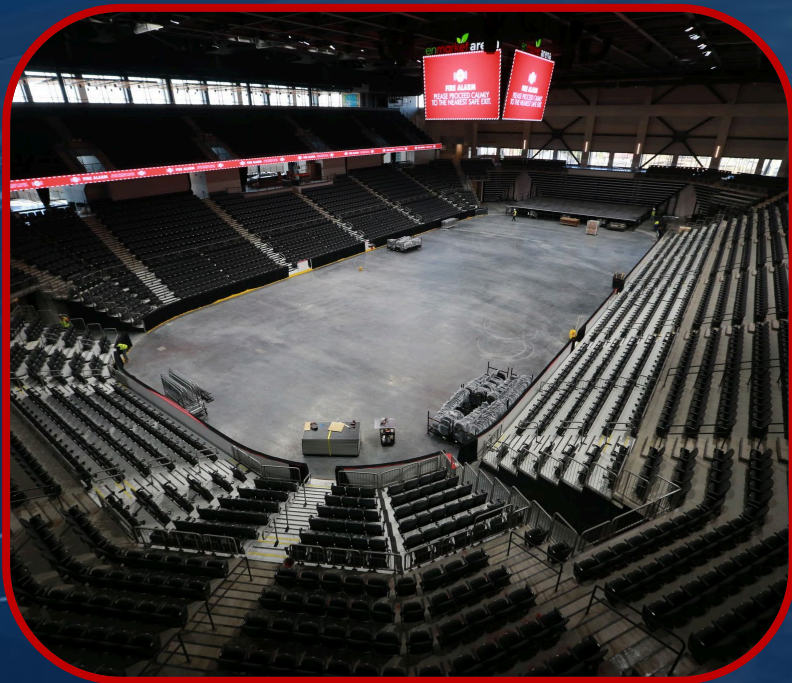


# I-16 Contraflow

- All lanes of I-16 flow westward from Savannah to Dublin (125 miles)
- **Please Note:**
  - Normal access to surface roads in standard westward lanes
  - Only certain exits are open in the “new” westward lanes
  - Once you exit the contraflow lane, you will not be able to re-enter the contraflow lane
    - Exit 143 - SR 30 in Bryan County
    - Exit 116 - US 301 in Bulloch County
    - Exit 104 - SR 23/121 in Candler County
    - Exit 90 - US 1 in Emmanuel County
    - Exit 71 - SR 15 in Treutlen County
    - Exit 67 - SR 29 in Laurens County
    - Exit 51 - US 441 in Laurens County



# Evacuation Assembly Area (EAA)



- Getting to a public shelter:
  - Take any Chatham Area Transit bus to the Enmarket Arena (**NEW** location)
  - Register onsite at the Evacuation Assembly Area (EAA)
  - Shuttle to a Macon-Bibb shelter on a bus
- What you can bring:
  - One small/medium hand carry bag, per person
  - Pets will be accepted at the EAA and transported via an animal bus to an inland animal shelter



# Evacuating Chatham County



- Evacuation Shelters
  - The Georgia Emergency Management and Homeland Security Agency (GEMA) has a list of available evacuation shelters open to the public
- Possible Shelter Locations
  - Appling County
  - Berrien County
  - Colquitt County
  - Cook County
  - Lowdnes County
  - Moscogee County
  - Richmond County
  - Sumter County
  - Thomas County
  - Wayne County





# The Hurricane Registry

- Purpose
  - To provide residents who have functional, access and medical needs a means of safe evacuation.
- Who May Qualify
  - Residents with:
    - No other resources for evacuating
    - **Functional or Access Needs:** Individuals who need assistance to maintain independence in a shelter
    - **Medical Needs:** Individuals who require the support of trained medical professionals in a shelter setting
- For more information or to register call: **1-833-CHD-REGISTER**



# Re-Entry Planning

1. Render Safe Task Force
2. Life Safety Workforce
3. Essential Public and Private Sector Personnel
4. Local Residents, Property Owners, and Business Owners
5. Open to the public with limited access





2024

# QUESTIONS?

