



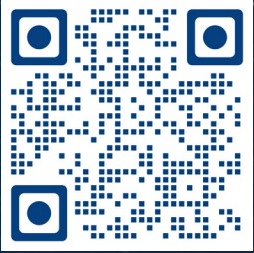
2024

# HURRICANE PREPAREDNESS

Chatham Emergency Management Agency



# Road Map to Preparedness



**2024 Season Information**

**Chatham County Threats and Hazards**

**The More You Know!**

**Preparing for the Storm**

**Evacuation**

**After a Storm**







# HURRICANE SEASON FORECAST

# 2024

## Colorado State University Hurricane Season Forecast

NAMED STORMS

23

HURRICANES

11

MAJOR HURRICANES

5





# HURRICANE SEASON AVERAGES

NAMED STORMS

14

HURRICANES

7

MAJOR HURRICANES

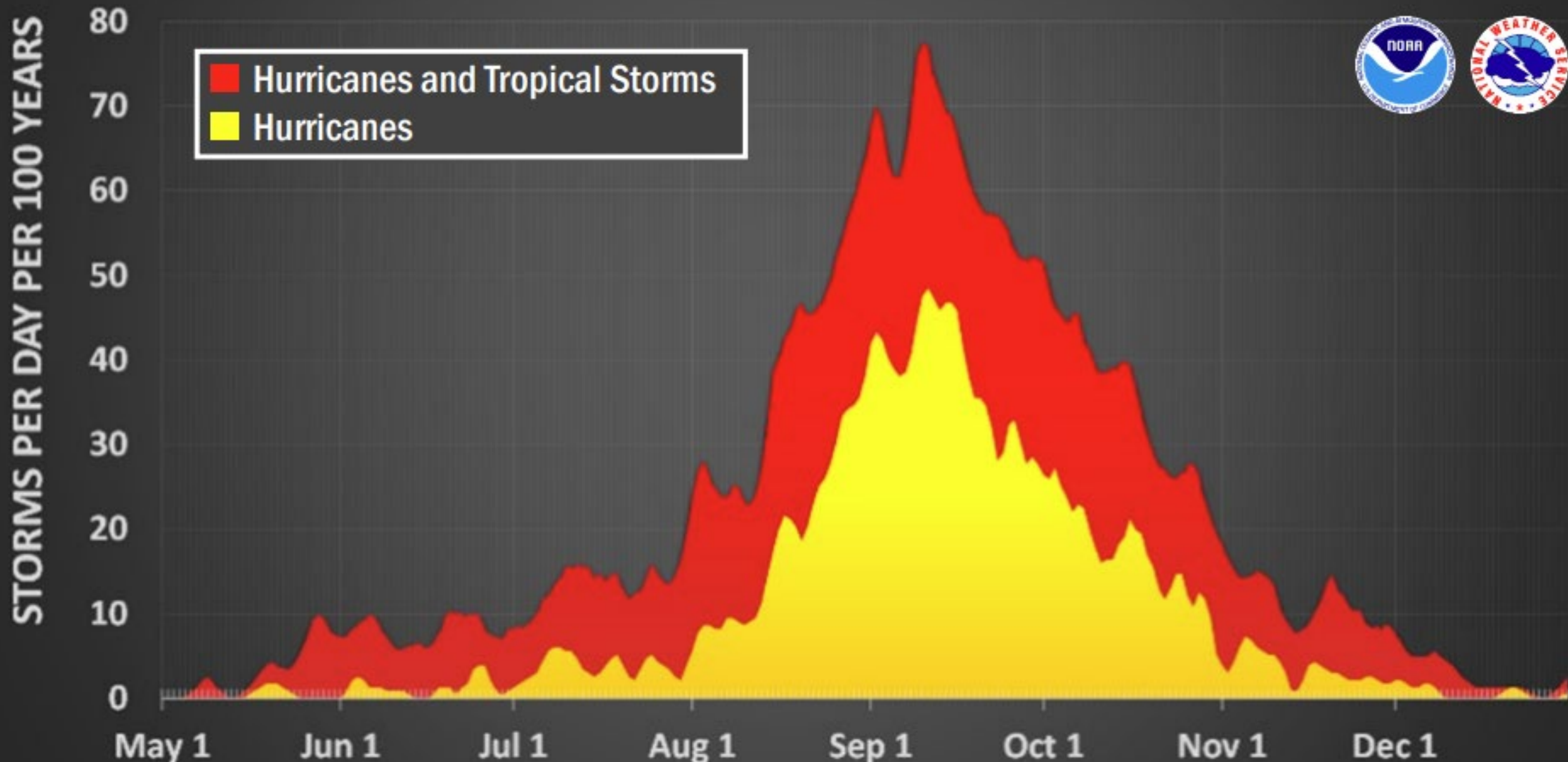
3





# Atlantic Hurricane and Tropical Storm Activity

Based on Data from 1944 to 2020



# Threats and Hazards

Hurricanes and Tropical Storms can produce several hazards within Chatham County:

- Tornadoes
- Storm Surge
- Excessive Rainfall
- Flooding
- High Surf and Rip Currents





# Tornadoes

- Hurricanes and Tropical Storms can produce tornadoes
- These tornadoes most often occur in the thunderstorms and rain bands within a hurricane
- They are usually well away from the center of a hurricane, but can also occur near the eyewall







# What is Storm Surge?

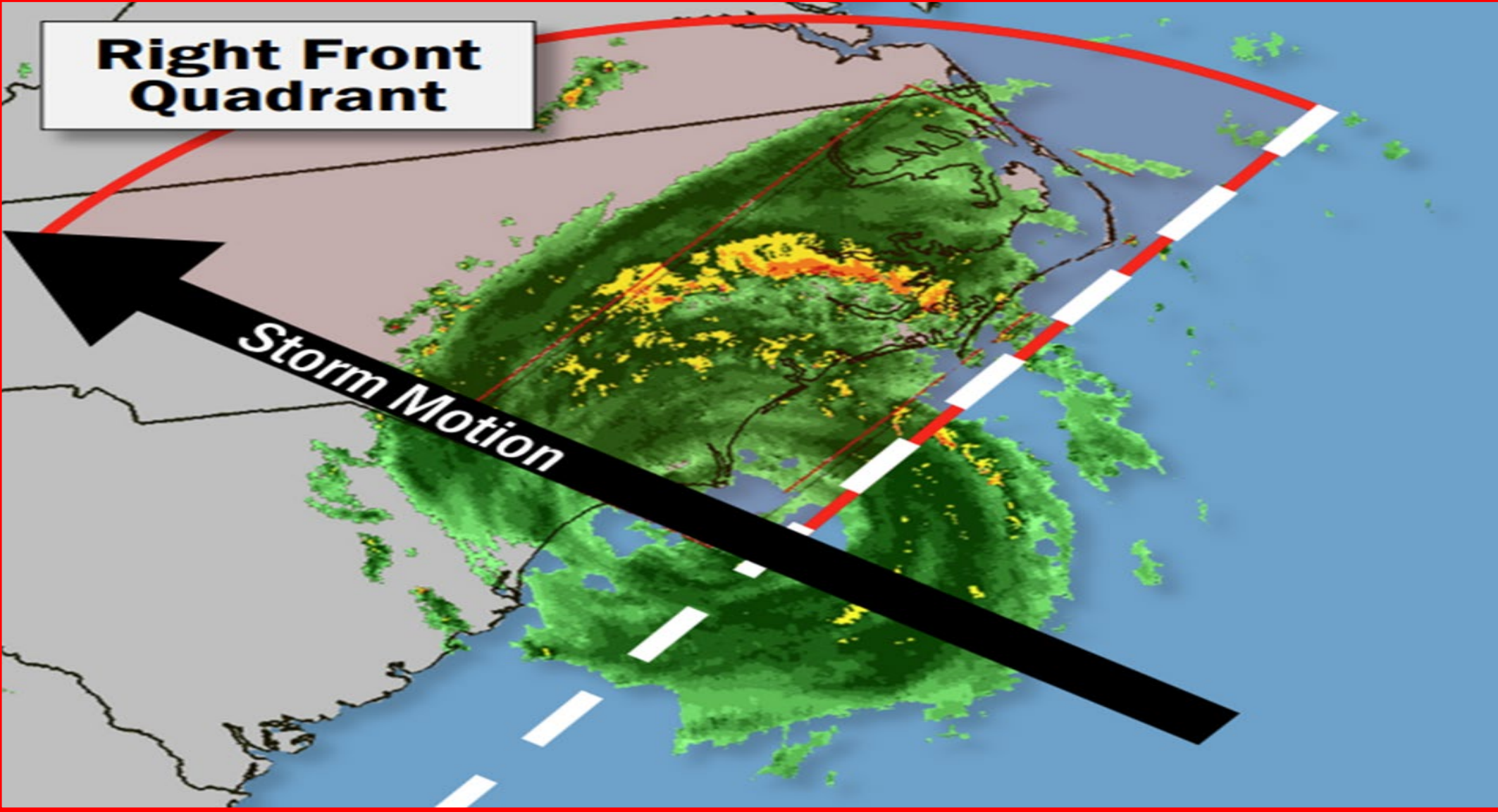
- An abnormal rise of sea level generated by storm driven winds and atmospheric pressure
- Can vary in severity depending on rainfall, tides, and river input
- Can be caused by either tropical storms or hurricanes





**Right Front  
Quadrant**

**Storm Motion**









# NO Storm Surge



## LEGEND

— Major Roads

DATA: DERIVED OF 2021 STORM SURGE  
BASED OFF THE 2018 LIDAR DATASET  
MAP DATE: 08/04/2021  
PRODUCED BY: DAVID ANDERSON

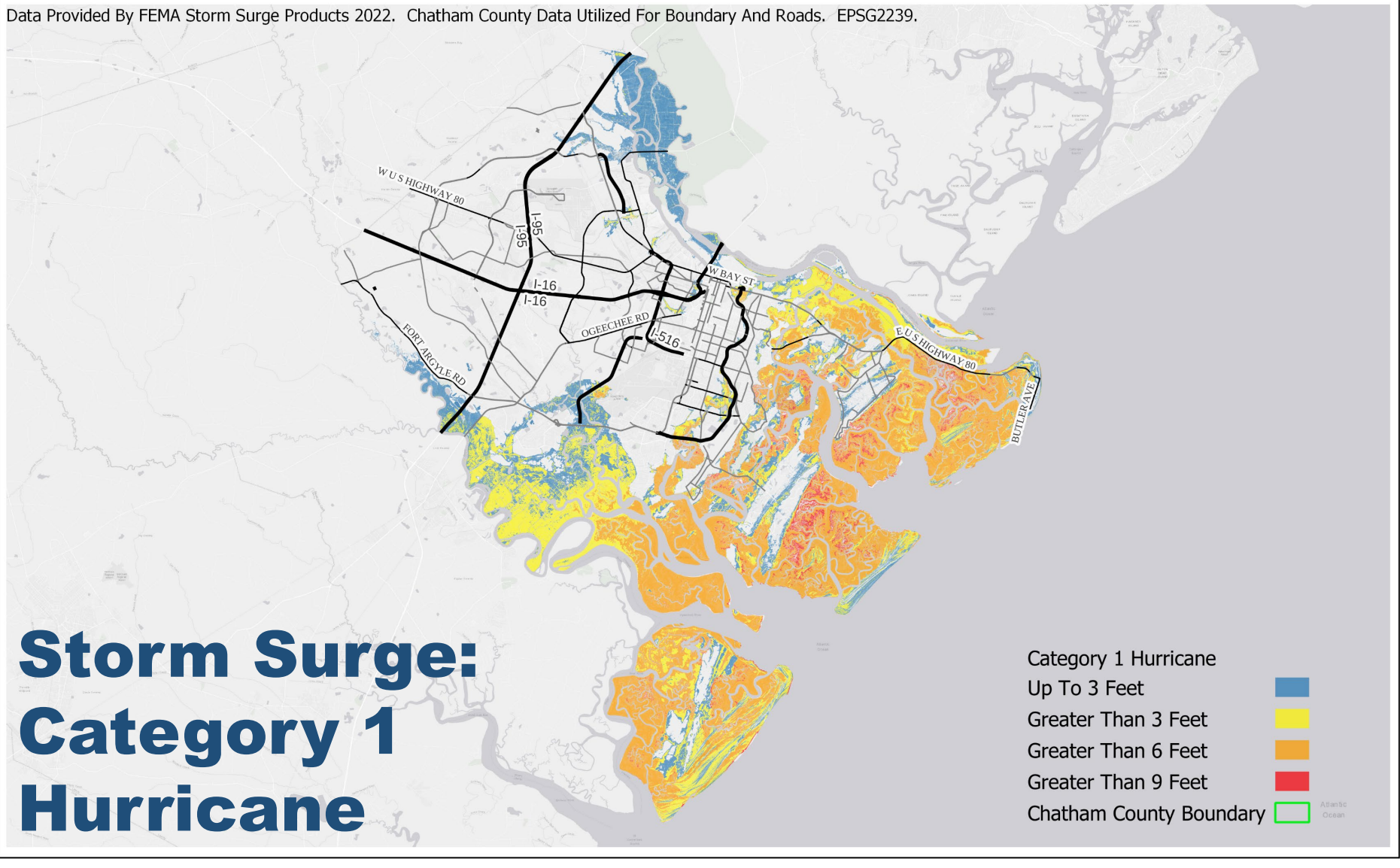
CHATHAM COUNTY, GEORGIA

0 2 4 8 Miles



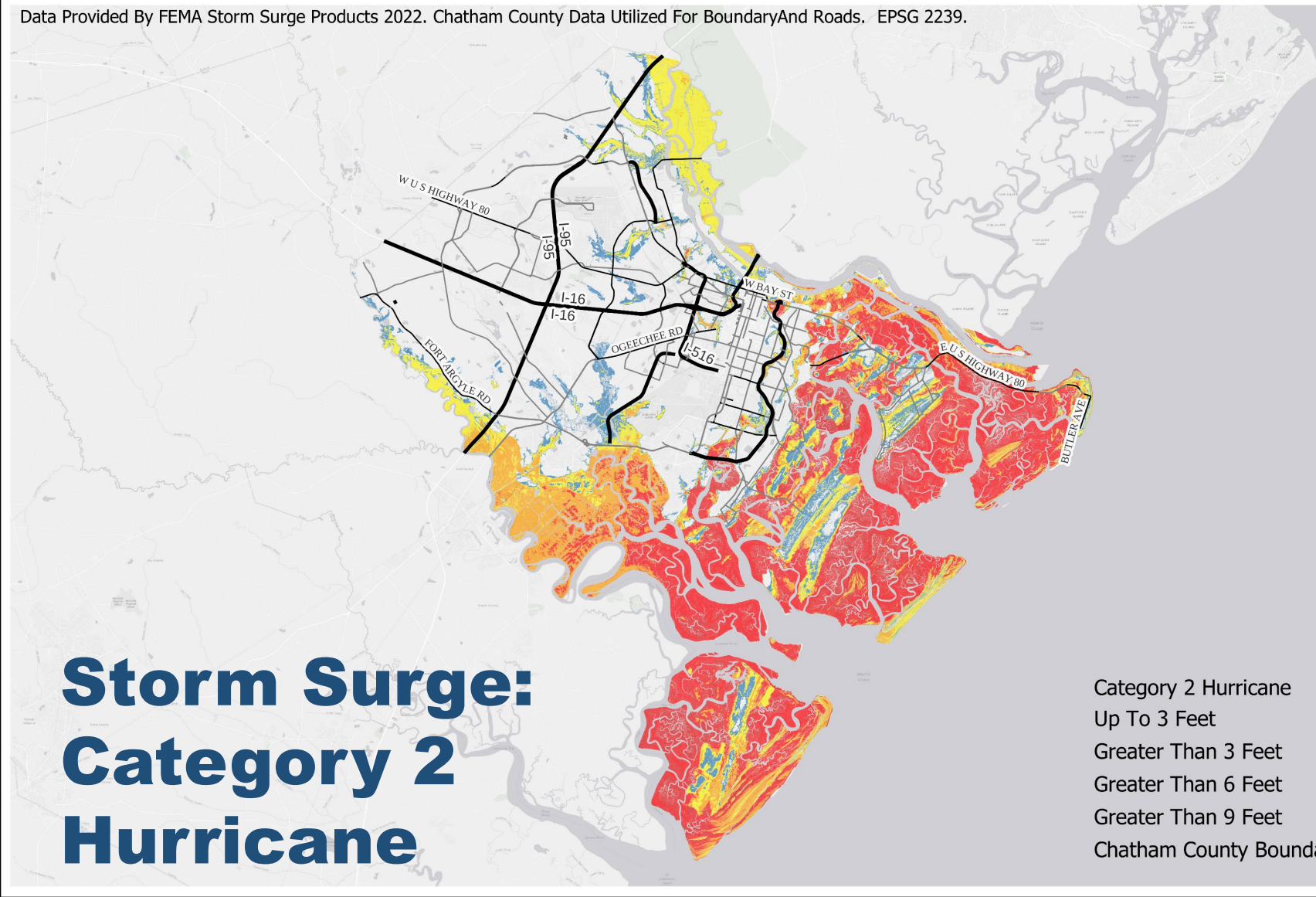


Data Provided By FEMA Storm Surge Products 2022. Chatham County Data Utilized For Boundary And Roads. EPSG2239.





Data Provided By FEMA Storm Surge Products 2022. Chatham County Data Utilized For Boundary And Roads. EPSG 2239.



# Storm Surge: Category 2 Hurricane

Category 2 Hurricane  
Up To 3 Feet  
Greater Than 3 Feet  
Greater Than 6 Feet  
Greater Than 9 Feet  
Chatham County Boundary

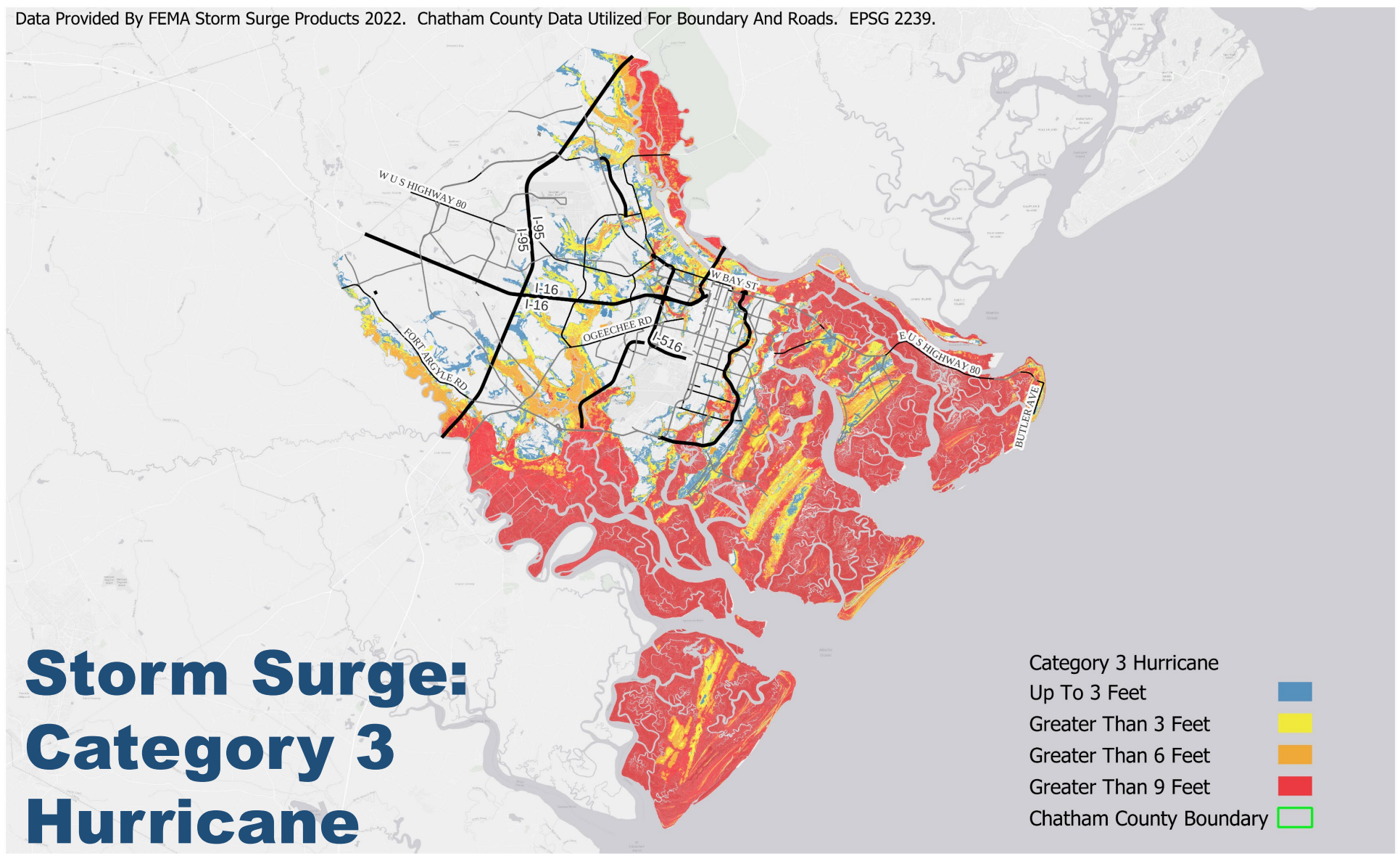




Data Provided By FEMA Storm Surge Products 2022. Chatham County Data Utilized For Boundary And Roads. EPSG 2239.

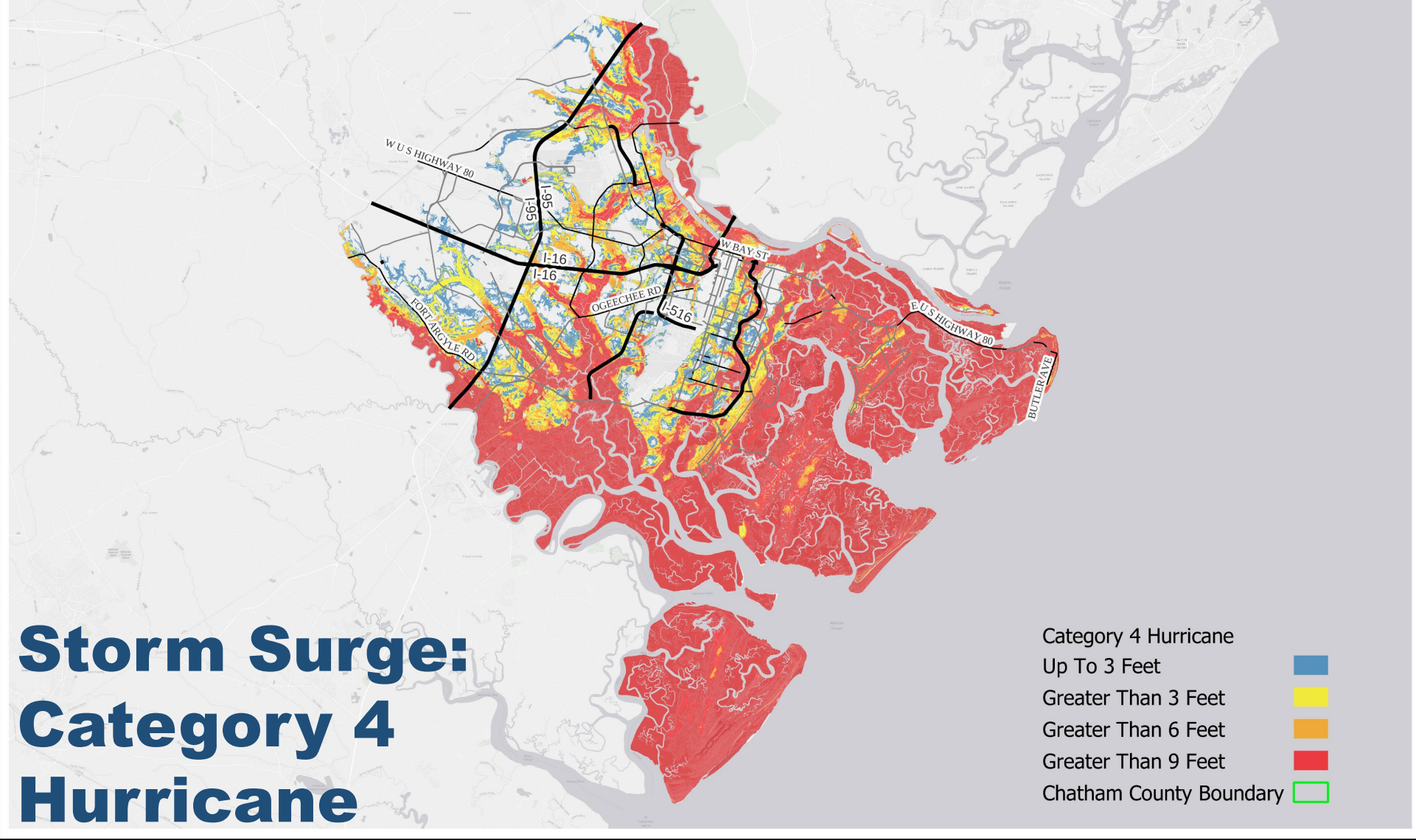
# Storm Surge: Category 3 Hurricane

Category 3 Hurricane  
Up To 3 Feet ■  
Greater Than 3 Feet ■  
Greater Than 6 Feet ■  
Greater Than 9 Feet ■  
Chatham County Boundary ■





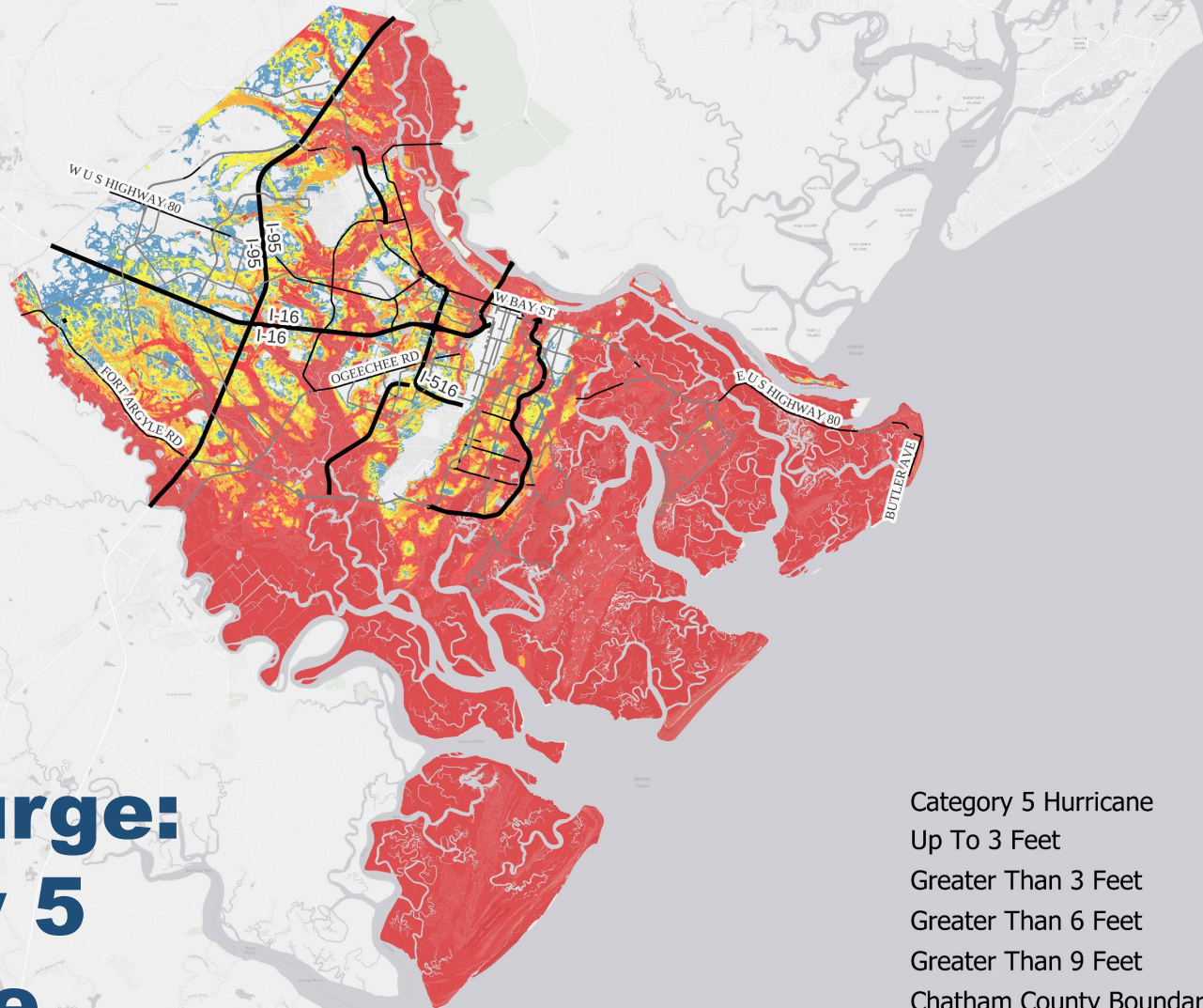
Data Provided By FEMA Storm Surge Products 2022. Chatham County Data Utilized For Boundary And Roads. EPSG 2239.





Data Provided By FEMA Storm Surge Products 2022. Chatham County Data Utilized For Boundary And Roads. EPSG 2239.

# Storm Surge: Category 5 Hurricane








Category 5 Hurricane  
Up To 3 Feet  
Greater Than 3 Feet  
Greater Than 6 Feet  
Greater Than 9 Feet  
Chatham County Boundary







# Factors That Influence Storm Surge

- 
- **Storm Intensity**
    - Stronger winds will produce a higher surge
  - **Size**
    - A larger storm will produce higher surge
      - ❖ Why? Winds are pushing on a larger area of the ocean and the storm will typically last longer
  - **Storm Forward Speed**
    - **Slower System**
      - ❖ A higher surge is produced inland because water has time to get into the bays, sounds and other enclosed bodies of water
    - **Faster System**
      - ❖ A higher surge is produced on the open coast-Tybee Island and other coastal areas
  - **Angle of Approach**
- 
- 
- 
- 





# Gone with the WIND

- Wind is a large hazard in Chatham County because of our extensive tree canopy
- Downed trees and limbs can cause devastating damage to homes, vehicles and infrastructure within Chatham County







# Excessive Rainfall

- For storms moving 6-30 mph, the average rainfall is 5 to 10 inches
- For storms moving SLOWER than 6 mph, the average rainfall is usually above 15 inches
- The heaviest rainfall with tropical systems usually falls along or near the coast and typically occurs slightly to the right of the track of the storm





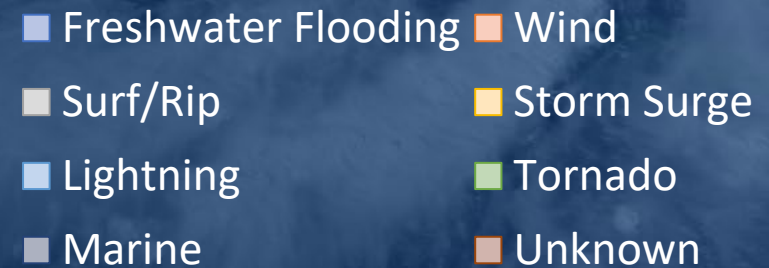
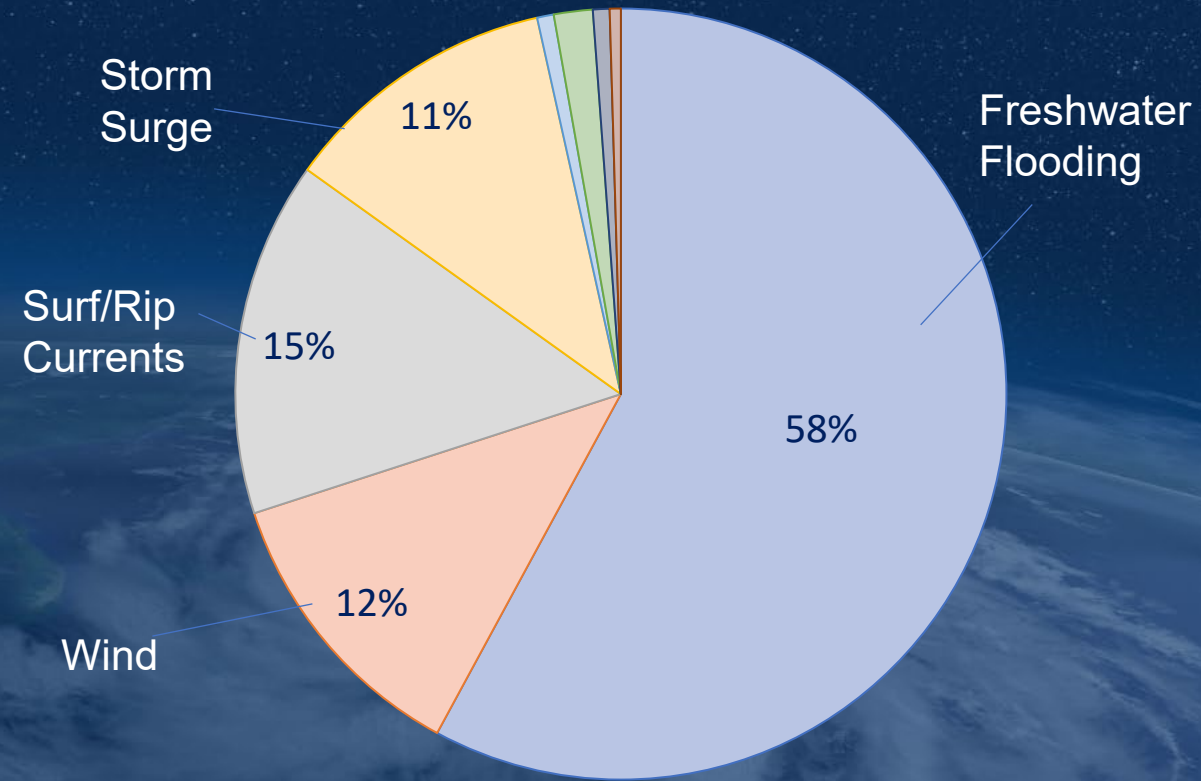
# What's the Largest Threat to Life?

## WATER:

- Water accounts for about 80% of direct deaths
- A lot of the deaths associated with water are because people drive through flooded roadways: Turn Around, Don't Drown!

## KEY FINDINGS:

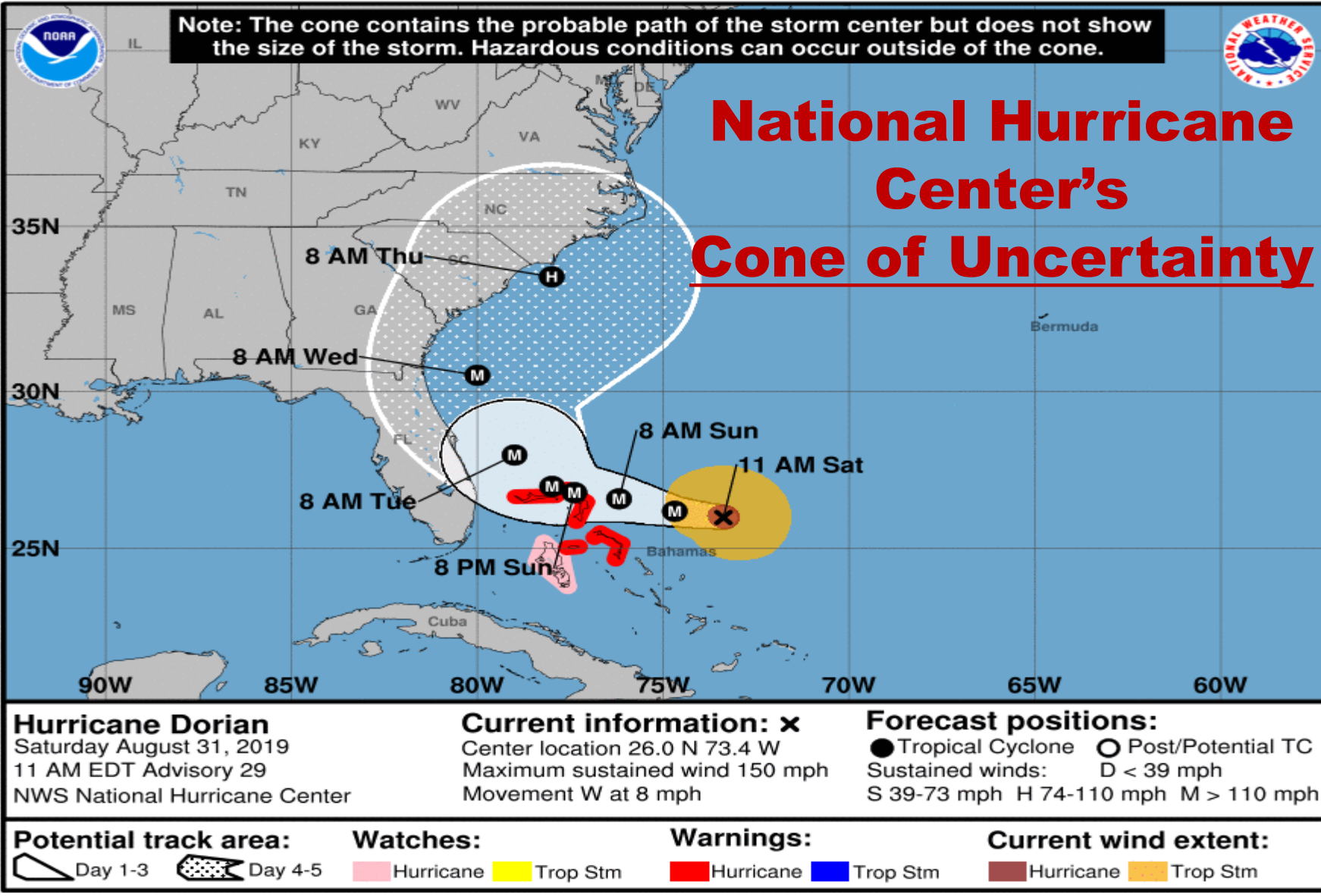
- Deadliest storms are NOT always the strongest storms!
  - Only 3/10 of the deadliest storms were Major Hurricanes (Category 3+)
  - 6/10 were Tropical Storms or Category 1 Hurricanes



U.S. Atlantic Tropical Cyclone Deaths  
2013-2022





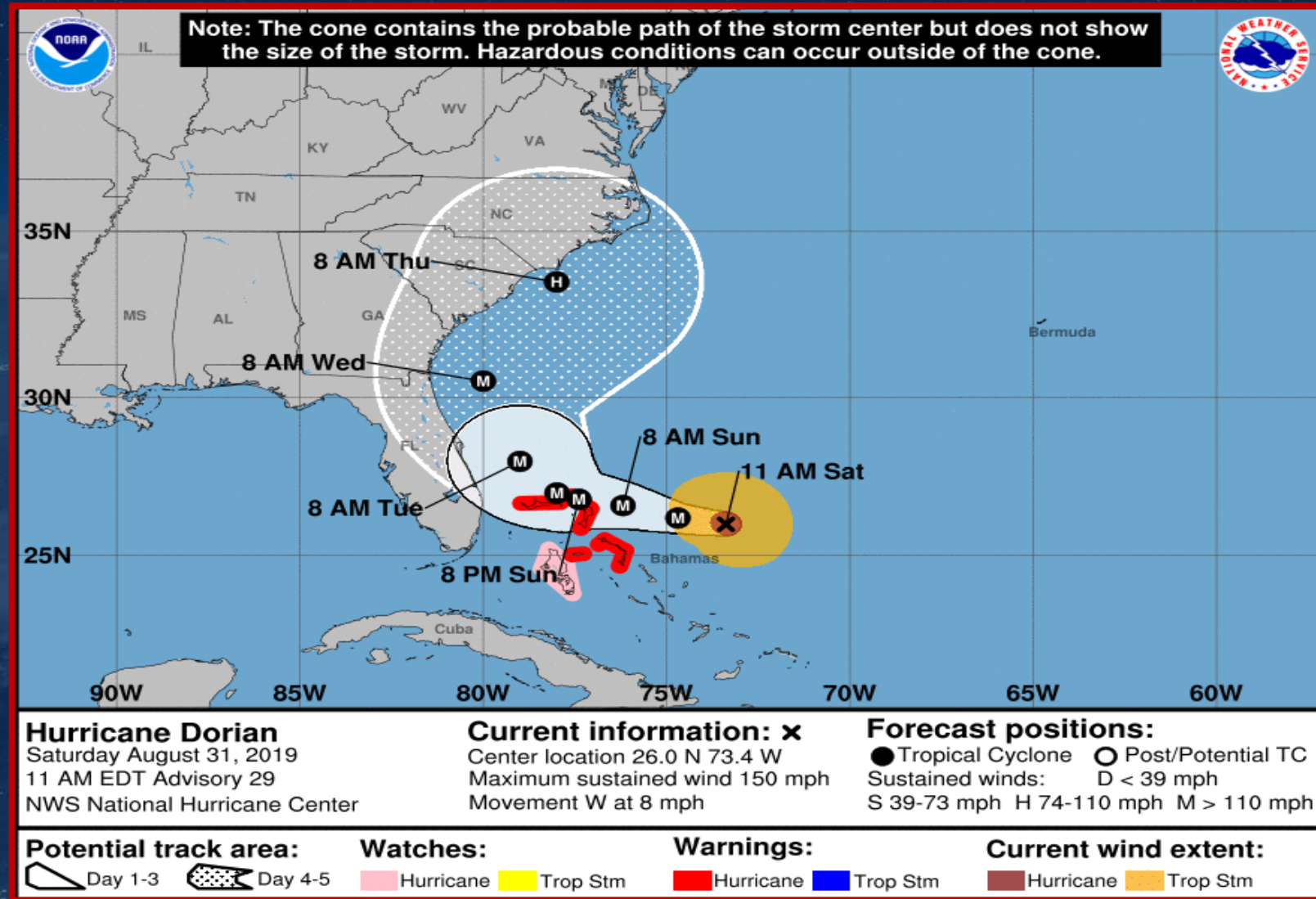




# National Hurricane Center's Cone of Uncertainty

What it DOES tell you:

- This ONLY tells you where the EYE OF THE STORM MAY GO
- The forward speed and direction of the storm, at that moment in time
- Current Watches and Warnings







# National Hurricane Center's Cone of Uncertainty



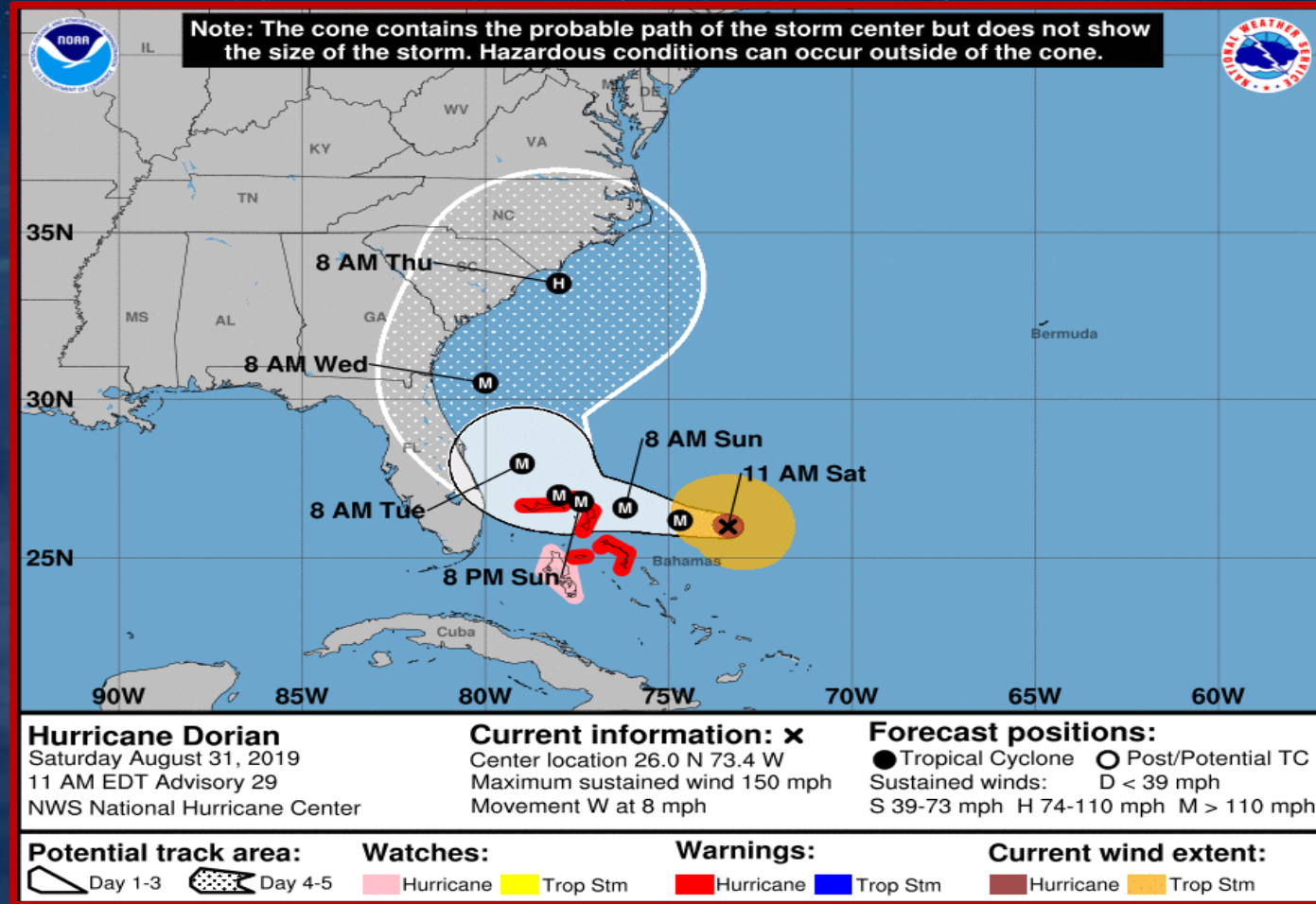
## The More You Know!

- Approximately 60% of the time, the storm's eye will fall SOMEWHERE inside that cone
- IMPACTS can and WILL extend beyond the cone



## What it DOES NOT tell you:

- The SIZE of the storm
- The INTENSITY of the storm
- Projected IMPACTS to OUR area



# How to Stay Informed

- CEMA Alerts
  - Text **CEMA** to **77295**
- CEMA's website-  
[ChathamEmergency.org](http://ChathamEmergency.org)
- Disaster website-  
[ready.chathamcountyga.gov](http://ready.chathamcountyga.gov)
- Social Media
  - @ChathamEMA
  - Be sure they are official sites!
  - Don't create OR share misinformation
- NOAA Weather Radio
  - If you are still in Chatham County, this will allow you to receive local weather alerts, immediately





# Prepare Your Family

- Develop an Evacuation Plan
  - Chatham County resident? You NEED an evacuation plan!
  - Destination could vary on the storm
  - Run from the water/ Hide from the wind
- Create a Communication Plan
  - Text messages are more reliable when systems are overwhelmed
- Assemble Disaster Supplies
  - Staying at home
  - Evacuating the community



# Home Emergency Kit



- Water
- Non-Perishable Food
- Manual Can Opener
- Flashlight(s)
- Extra Batteries
- Duct Tape
- Lighter and matches
- Evacuation Kit!
- First aid kit
- Work gloves
- Portable Device charger
- Entertainment Options (Adults & Kids)
- Comfort Items
- **Extra cash**
- Paper products (napkins, plates, etc)
- Hand Sanitizer
- Weather Radio!
- Whistle
- Local Map (printed)
- Personal Hygiene Items (Extra Supplies)





# Evacuation Emergency Kit



- Quick Access/Storage
  - 5-gallon bucket
- Plan for at least 3-5 days
  - Water (one gallon/person/day)
  - Non-perishable food (Manual Can Opener)
  - Important medication/prescriptions
- Essential Devices and Chargers
  - Hard drives, computers, tablets, etc.
- Copies of important documents
  - Insurance, Birth Certificate(s), Passport(s)
- Hygiene Items
- **Extra Cash**, if possible





# Flood Insurance

- No home is completely safe from flooding
- 1 inch of water can cost more than \$25,000 in damages
- Homeowners and/or Renters insurance **DOES NOT** cover flooding!
- Flood insurance is the **ONLY** way to help protect your home and your things from flooding
- **DON'T DELAY!** Flood insurance takes 30 days to activate!
- No need to shop- National Flood Insurance Program sets the rate for all insurance companies
- You **DO NOT** have to be in a flood zone to get flood insurance!





# Insurance Check Up



- Call your insurance agent and ask for a check up to ensure you have enough coverage BEFORE a storm is coming
- If your home is damaged, how will you explain everything that you own?
  - You MUST document it!
  - Take photos or video of the contents of your home!
  - Create your own inventory and update it each year

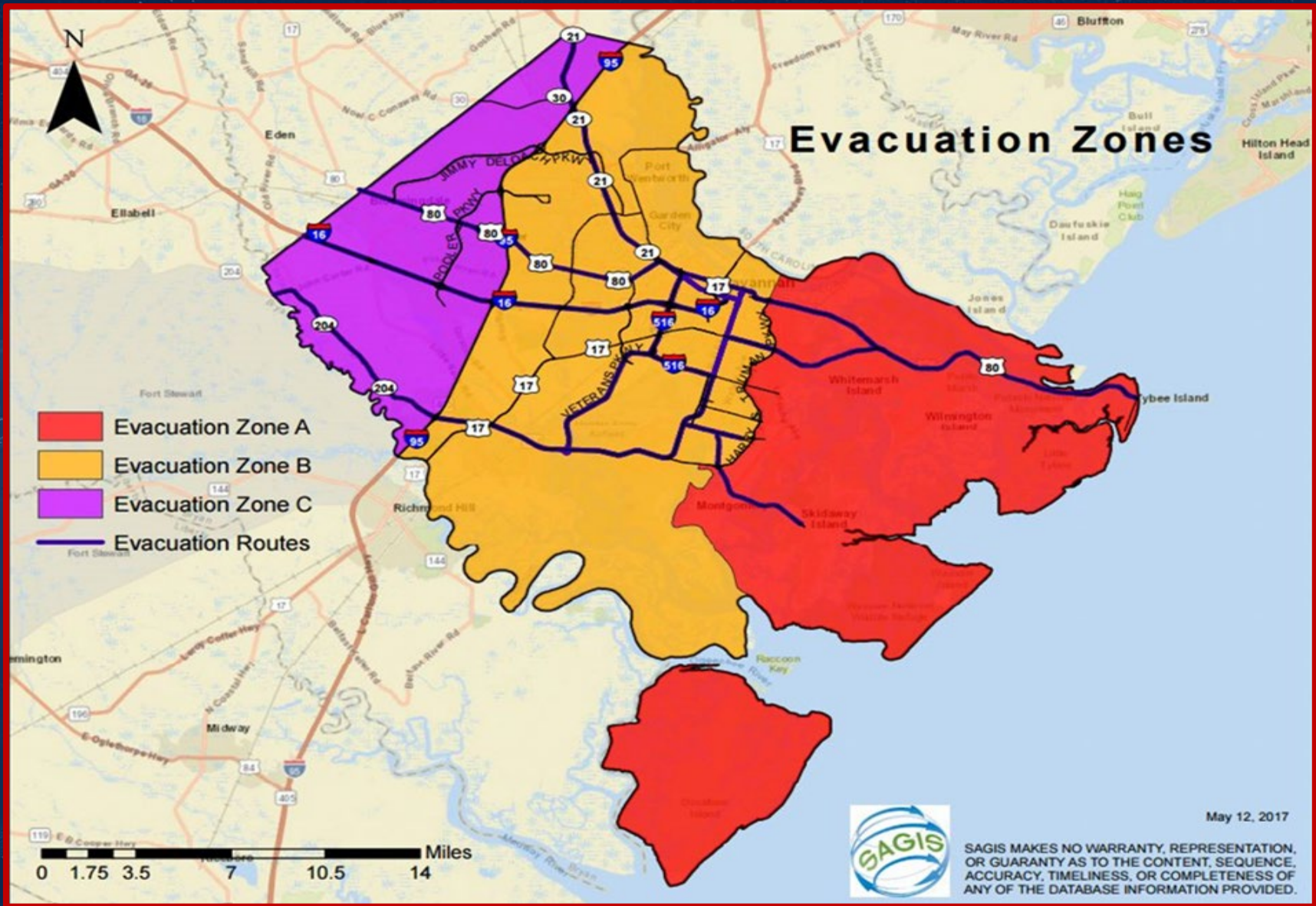


# Prepare Your Home

- Cut weak branches and trees
- Install storm shutters, if possible
- Sliding glass doors should be made of tempered glass
  - During a storm, cover them with shutters or plywood- they are vulnerable to wind damage in comparison to other doors
- Consider replacing gravel or rock landscaping
  - These can become projectiles during a storm
- Seal outside wall openings
  - Vents, outdoor electrical outlets, etc.
- Learn more at [www.ChathamEmergency.org](http://www.ChathamEmergency.org)









# Evacuation Terminology

- Evacuation Order
  - A general statement used to encourage residents to evacuate
- Mandatory Evacuation Order
  - An Executive Directive requiring all residents, visitors, businesses and anyone else in the target area to evacuate
  - **Personal discretion is NOT an option**







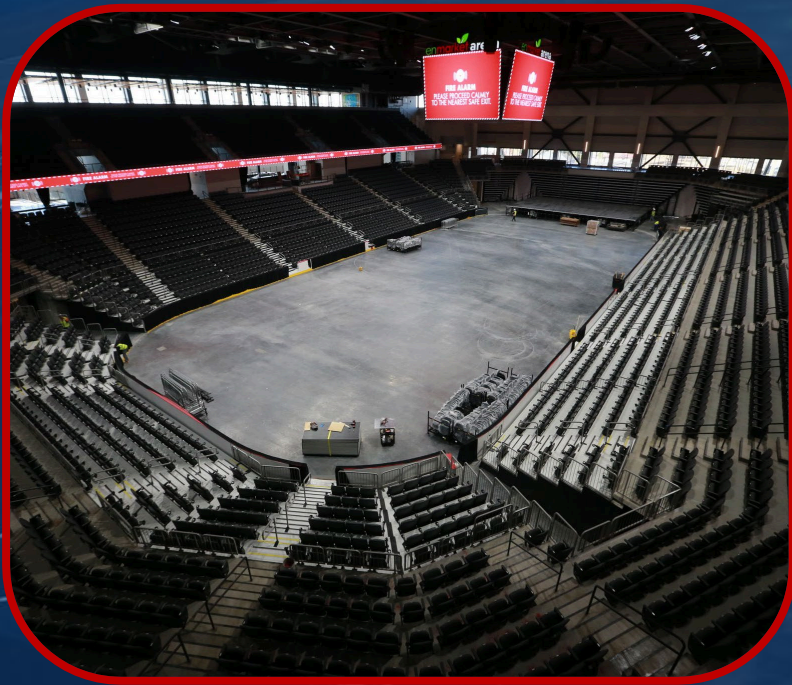
# I-16 Contraflow

- All lanes of I-16 flow westward from Savannah to Dublin (125 miles)
- **Please Note:**
  - Normal access to surface roads in standard westward lanes
  - Only certain exits are open in the “new” westward lanes
  - Once you exit the contraflow lane, you will not be able to re-enter the contraflow lane
    - Exit 143 - SR 30 in Bryan County
    - Exit 116 - US 301 in Bulloch County
    - Exit 104 - SR 23/121 in Candler County
    - Exit 90 - US 1 in Emmanuel County
    - Exit 71 - SR 15 in Treutlen County
    - Exit 67 - SR 29 in Laurens County
    - Exit 51 - US 441 in Laurens County





# Evacuation Assembly Area (EAA)



- Getting to a public shelter:
  - Take any Chatham Area Transit bus to the Enmarket Arena (**NEW** location)
  - Register onsite at the Evacuation Assembly Area (EAA)
  - Shuttle to a Macon-Bibb shelter on a bus
- What you can bring:
  - One small/medium hand carry bag, per person
  - Pets will be accepted at the EAA and transported via an animal bus to an inland animal shelter





# Evacuating Chatham County



- Evacuation Shelters
  - The Georgia Emergency Management and Homeland Security Agency (GEMA) has a list of available evacuation shelters open to the public
- Possible Shelter Locations
  - Appling County
  - Berrien County
  - Colquitt County
  - Cook County
  - Lowdnes County
  - Muscogee County
  - Richmond County
  - Sumter County
  - Thomas County
  - Wayne County



# The Shelter Experience

- Shelter conditions are not lavish and may not be comfortable, but you will be **safe** from the approaching weather
- You may be sleeping on the floor or on a cot for multiple days
- Hot meals are not guaranteed but meals and snacks will be provided.
- Food choices will be limited
- It is possible that power may be lost at the inland facility as the storm passes
- It may be crowded
- It may be hot
- Charging capabilities for phones and other personal devices will be very limited within your shelter





# The Hurricane Registry

- Purpose
  - To provide residents who have functional, access and medical needs a means of safe evacuation.
- Who May Qualify
  - Residents with:
    - No other resources for evacuating
    - **Functional or Access Needs:** Individuals who need assistance to maintain independence in a shelter
    - **Medical Needs:** Individuals who require the support of trained medical professionals in a shelter setting
- For more information or to register call: **1-833-CHD-REGISTER**



# Evacuating with Animals

- Find a safe place for you and your pet(s)
  - Pre-identify locations, hotels, restaurants, etc. that will allow your pet to come along
  - BringFido.com
- Make a Disaster Kit for your pet

- |  |  |
|--|--|
| <ul style="list-style-type: none"><li>• Medication and medical records</li><li>• Food and water (with bowls)</li><li>• A favorite toy or blanket</li><li>• A current photo</li></ul> | <ul style="list-style-type: none"><li>• Carriers for transporting</li><li>• Cat litter and litter box</li><li>• Your veterinarian's contact information</li><li>• Leashes/harness/muzzle</li></ul> |
|--|--|





# Re-Entry Planning

1. Render Safe Task Force
2. Life Safety Workforce
3. Essential Public and Private Sector Personnel
4. Local Residents, Property Owners, and Business Owners
5. Open to the public with limited access





# Resources After A Storm



- Damage Assessment Teams
  - These are County or City Officials collecting information for potential assistance
  - Do not approach or interfere unless they have a question for you
- Volunteer Teams
  - Crisis Cleanup Hotline
  - Coastal Empire Disaster Recovery Committee (CEDRC)
- United Way Disaster Relief Fund





# Resources After A Storm

- FEMA Assistance
  - Individual Assistance
    - Programs for the general public who have been impacted by a Presidentially Declared Disaster
    - NOT guaranteed!
    - Changes in March 2024 allow for more equitable disaster assistance processes and programs
  - Public Assistance
    - Programs for government and non-profit agencies
    - NOT for individuals, but instead for organizations
- Other Federal Assistance
  - Small Business Administration (SBA) Loans
    - Loans available to both small businesses and individuals following a disaster





2024

# QUESTIONS?

