



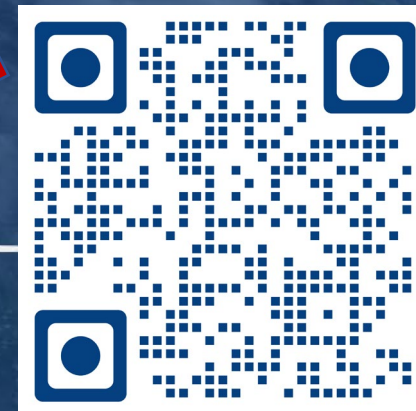
2026

HURRICANE PREPAREDNESS

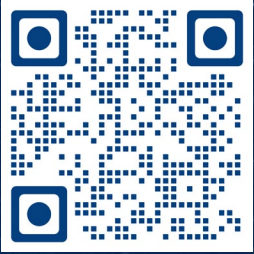
Chatham Emergency Management Agency



Scan Me!



Road Map to Preparedness



2026 Season Information

Chatham County Threats and Hazards

The More You Know!

Preparing for the Storm

Evacuation

After a Storm





HURRICANE SEASON FORECAST

2026

Colorado State University Hurricane Season Forecast

NAMED STORMS

13

HURRICANES

6

MAJOR HURRICANES

2





HURRICANE SEASON AVERAGES

NAMED STORMS

14

HURRICANES

7

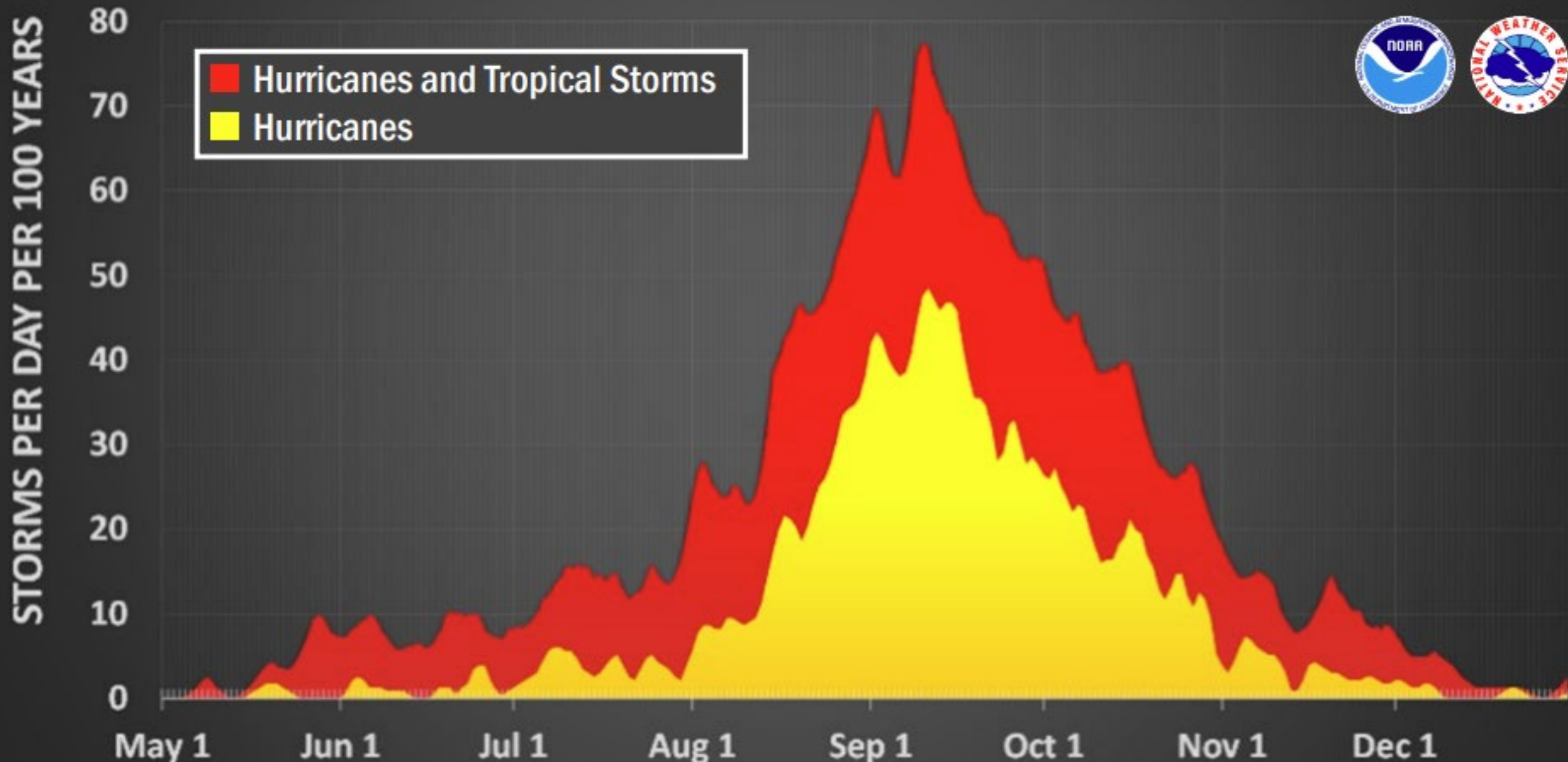
MAJOR HURRICANES

3



Atlantic Hurricane and Tropical Storm Activity

Based on Data from 1944 to 2020



Threats and Hazards

Hurricanes and Tropical Storms can produce several hazards within Chatham County:

- Tornadoes
- Storm Surge
- Excessive Rainfall
- Flooding
- High Surf and Rip Currents



Tornadoes

- Hurricanes and Tropical Storms can produce tornadoes
- These tornadoes most often occur in the thunderstorms and rain bands within a hurricane
- They are usually well away from the center of a hurricane, but can also occur near the eyewall



What is Storm Surge?

- An abnormal rise of sea level generated by storm driven winds and atmospheric pressure
- Can vary in severity depending on rainfall, tides, and river input
- Can be caused by either tropical storms or hurricanes







NO Storm Surge



LEGEND

— Major Roads

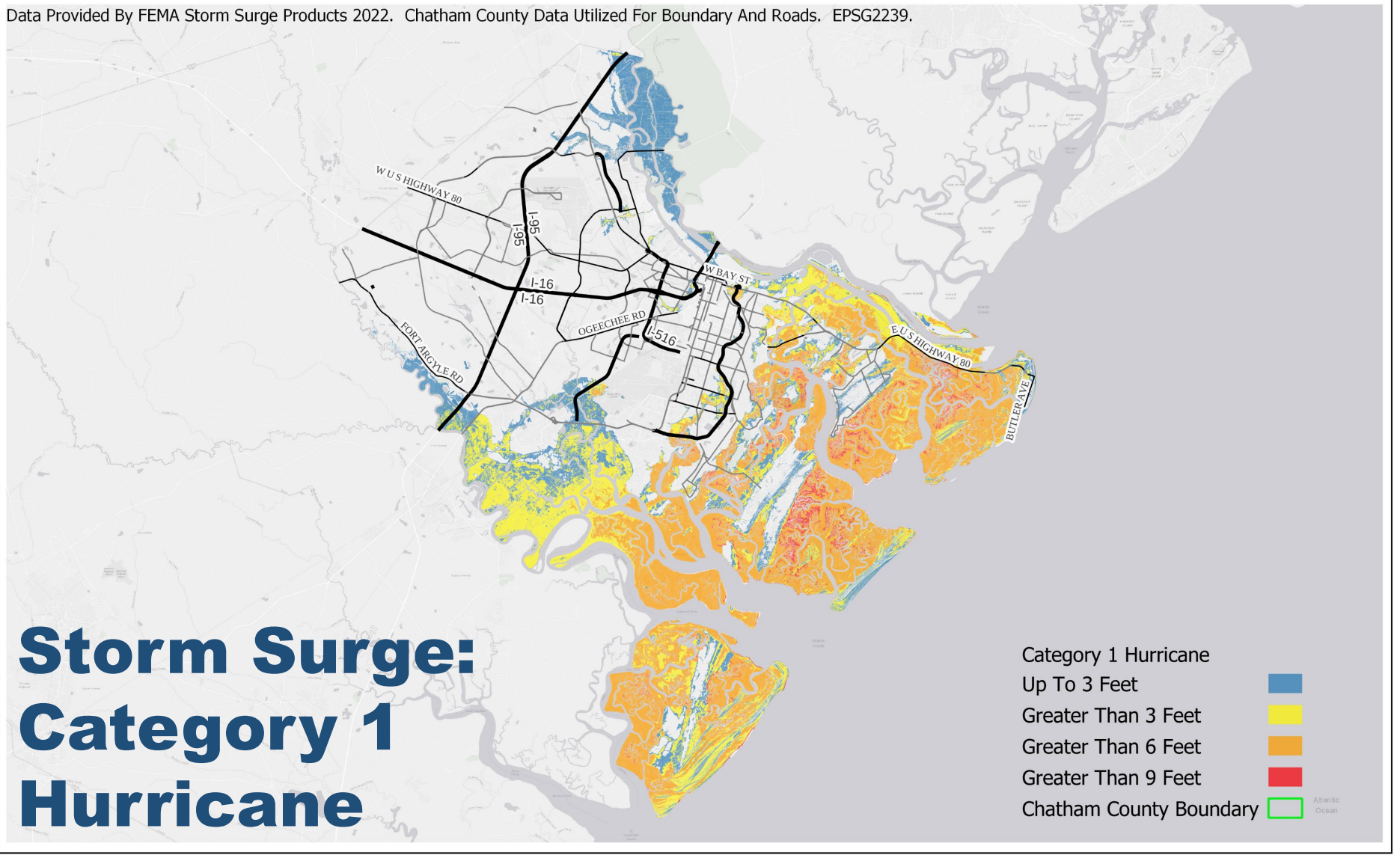
DATA: DERIVED OF 2021 STORM SURGE
BASED OFF THE 2018 LIDAR DATASET
MAP DATE: 08/04/2021
PRODUCED BY: DAVID ANDERSON

CHATHAM COUNTY, GEORGIA

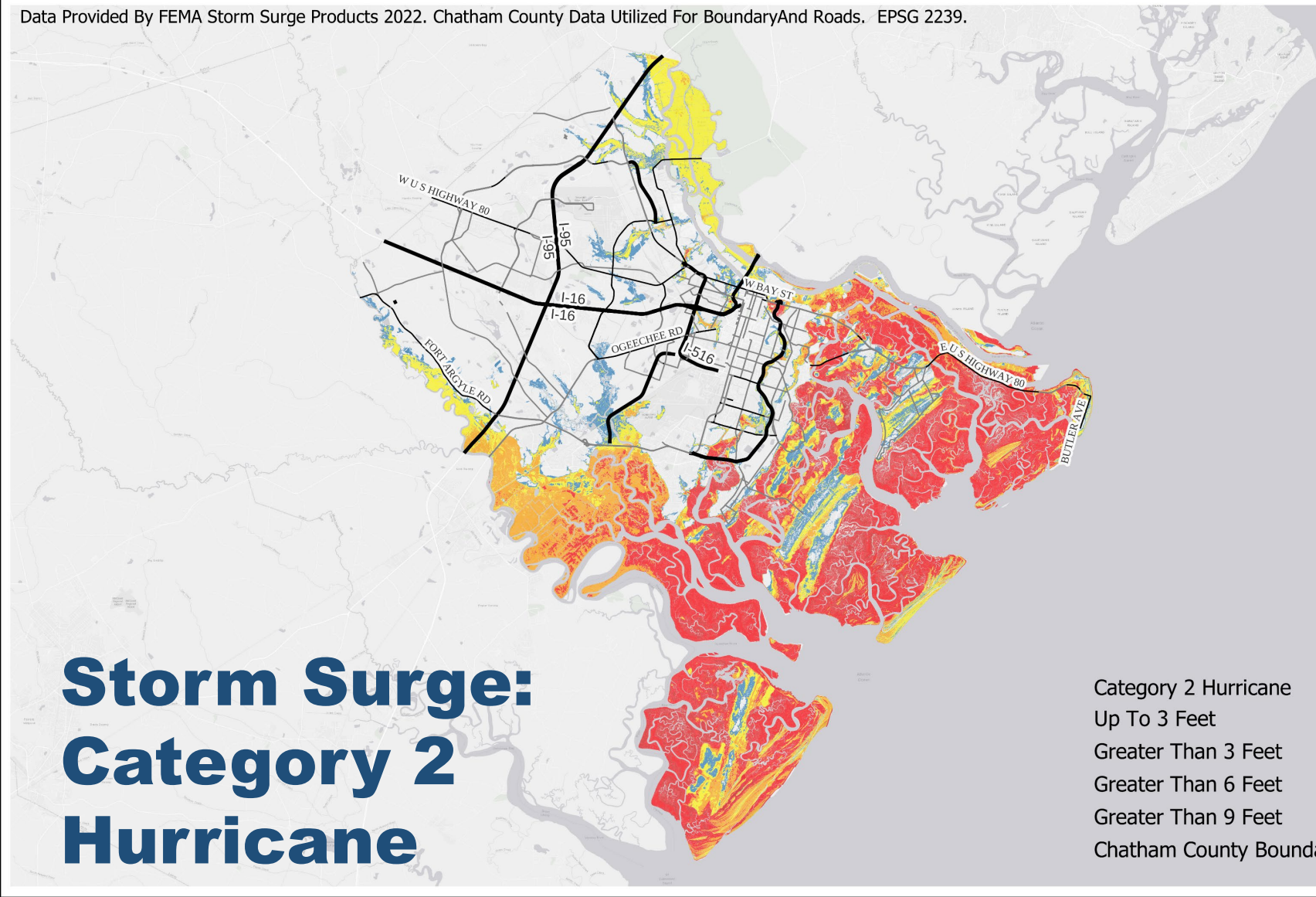
0 2 4 8 Miles



Data Provided By FEMA Storm Surge Products 2022. Chatham County Data Utilized For Boundary And Roads. EPSG2239.



Data Provided By FEMA Storm Surge Products 2022. Chatham County Data Utilized For Boundary And Roads. EPSG 2239.

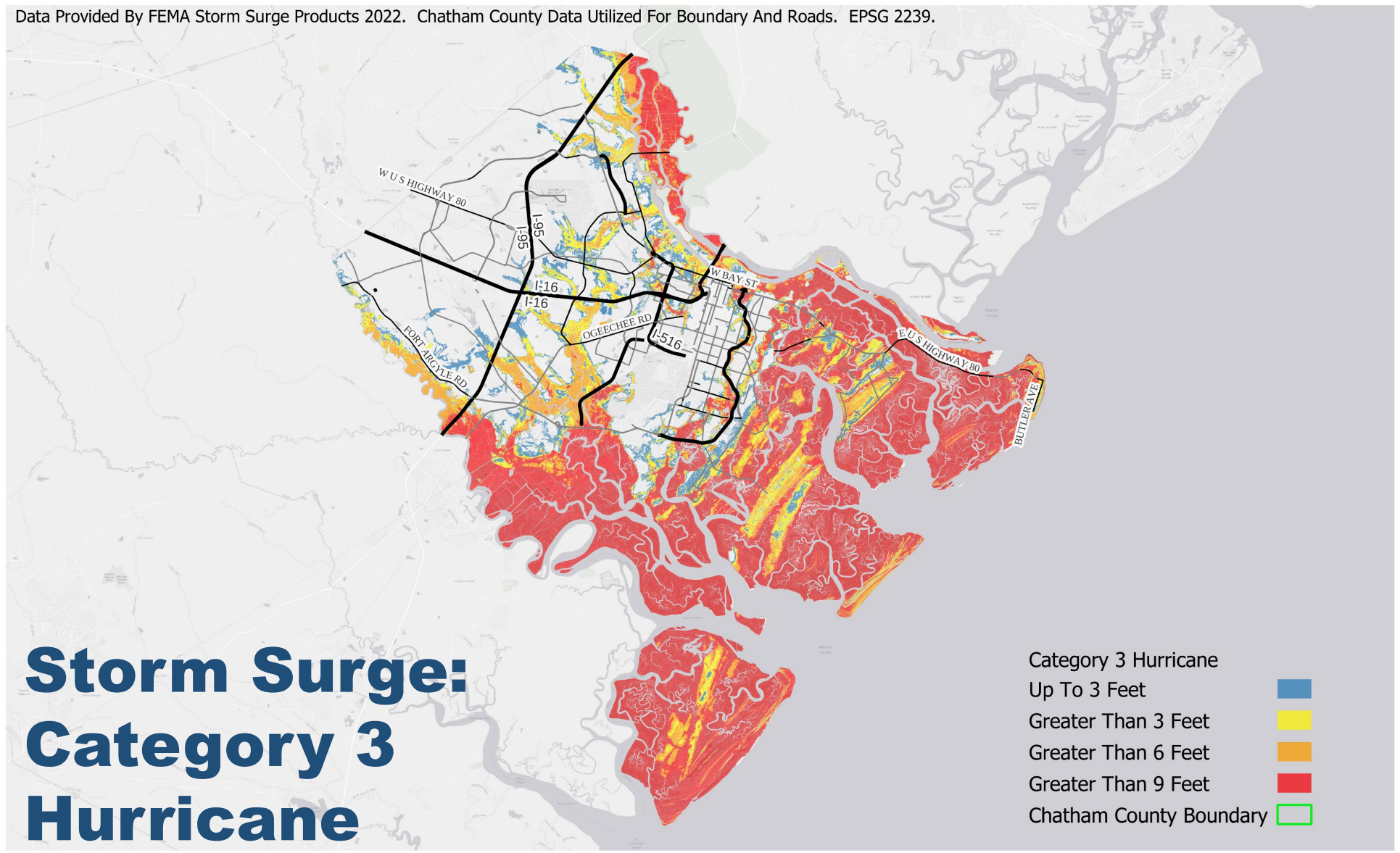


Storm Surge: Category 2 Hurricane

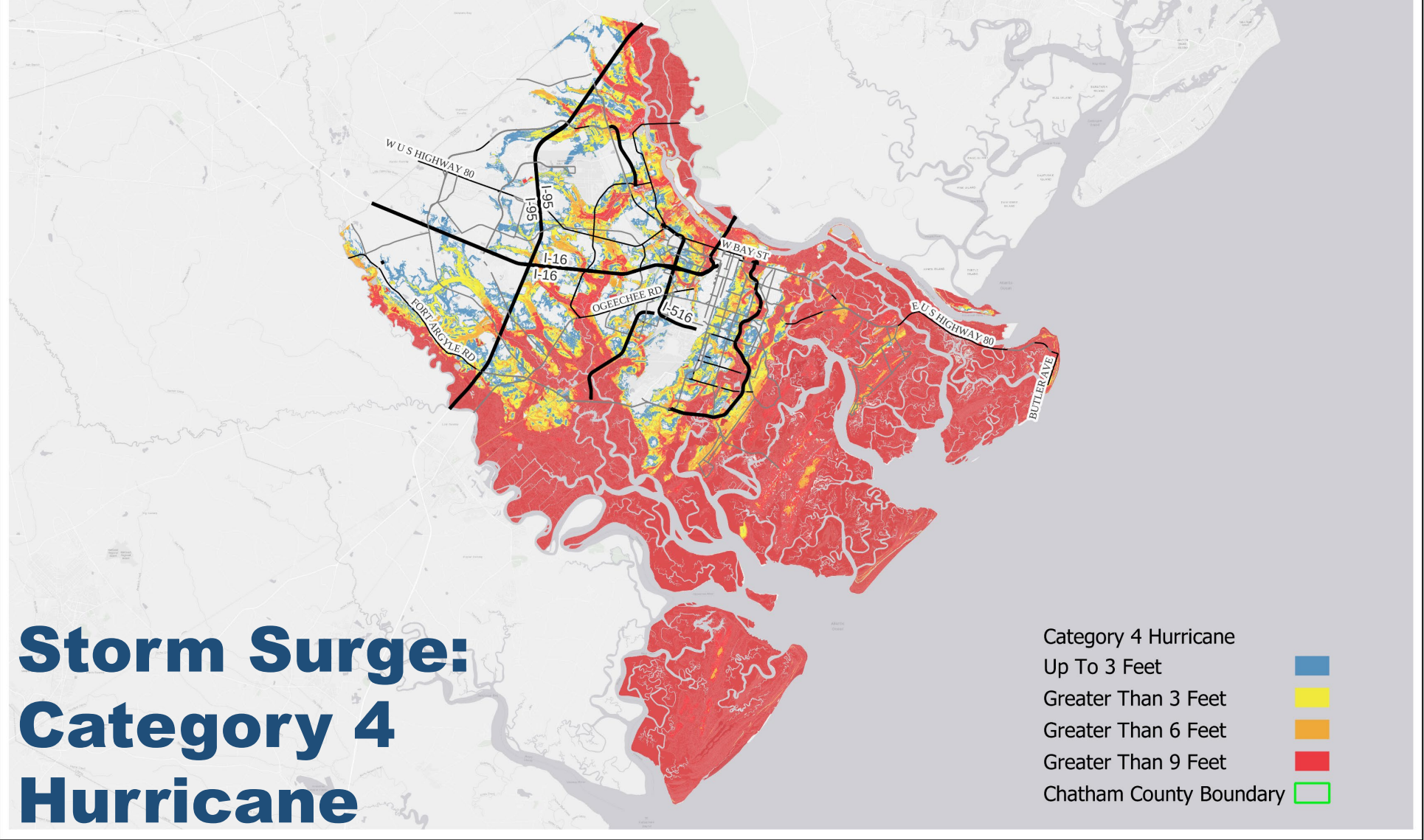
Category 2 Hurricane
Up To 3 Feet
Greater Than 3 Feet
Greater Than 6 Feet
Greater Than 9 Feet
Chatham County Boundary



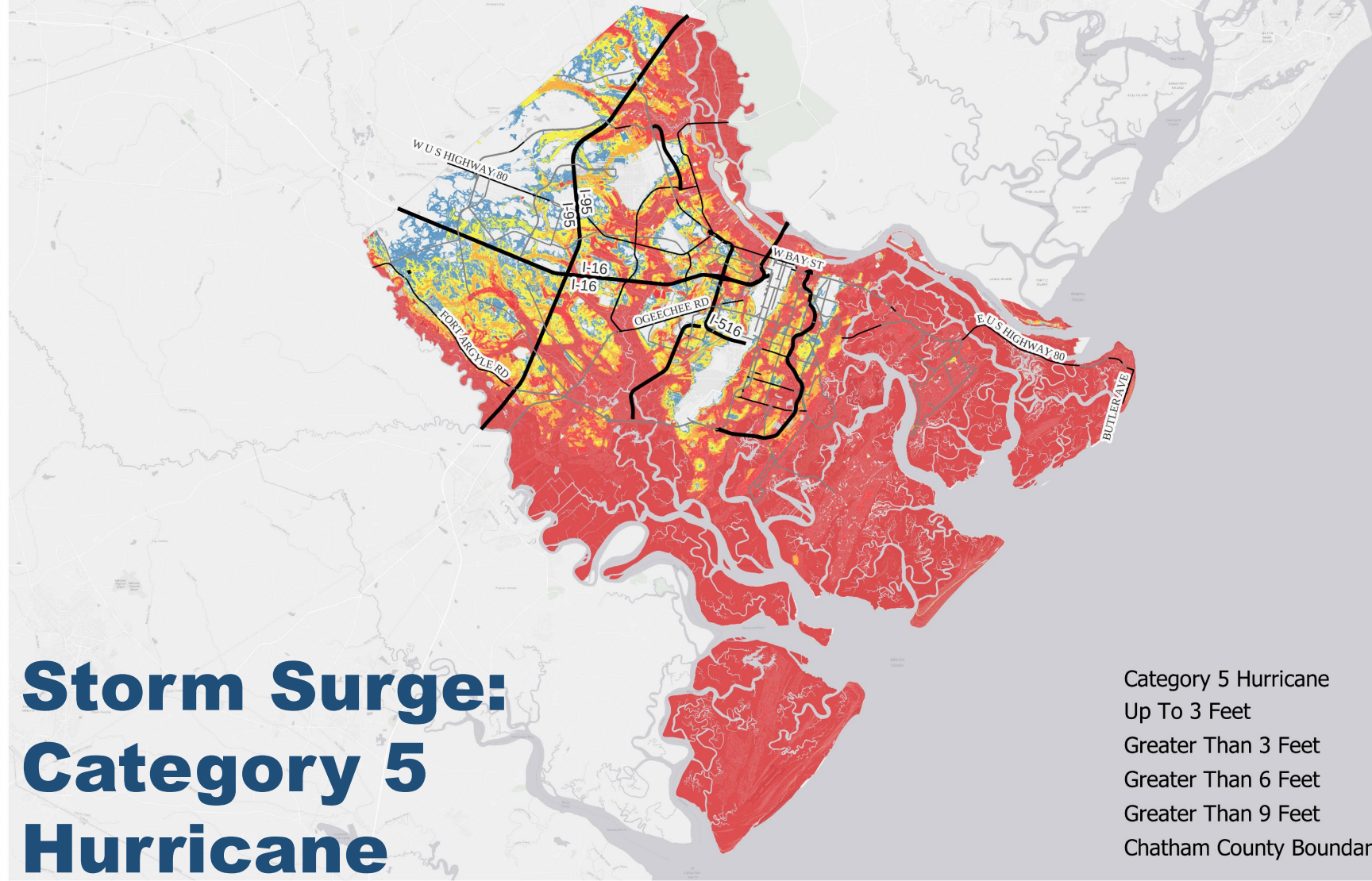
Data Provided By FEMA Storm Surge Products 2022. Chatham County Data Utilized For Boundary And Roads. EPSG 2239.



Data Provided By FEMA Storm Surge Products 2022. Chatham County Data Utilized For Boundary And Roads. EPSG 2239.








Data Provided By FEMA Storm Surge Products 2022. Chatham County Data Utilized For Boundary And Roads. EPSG 2239.





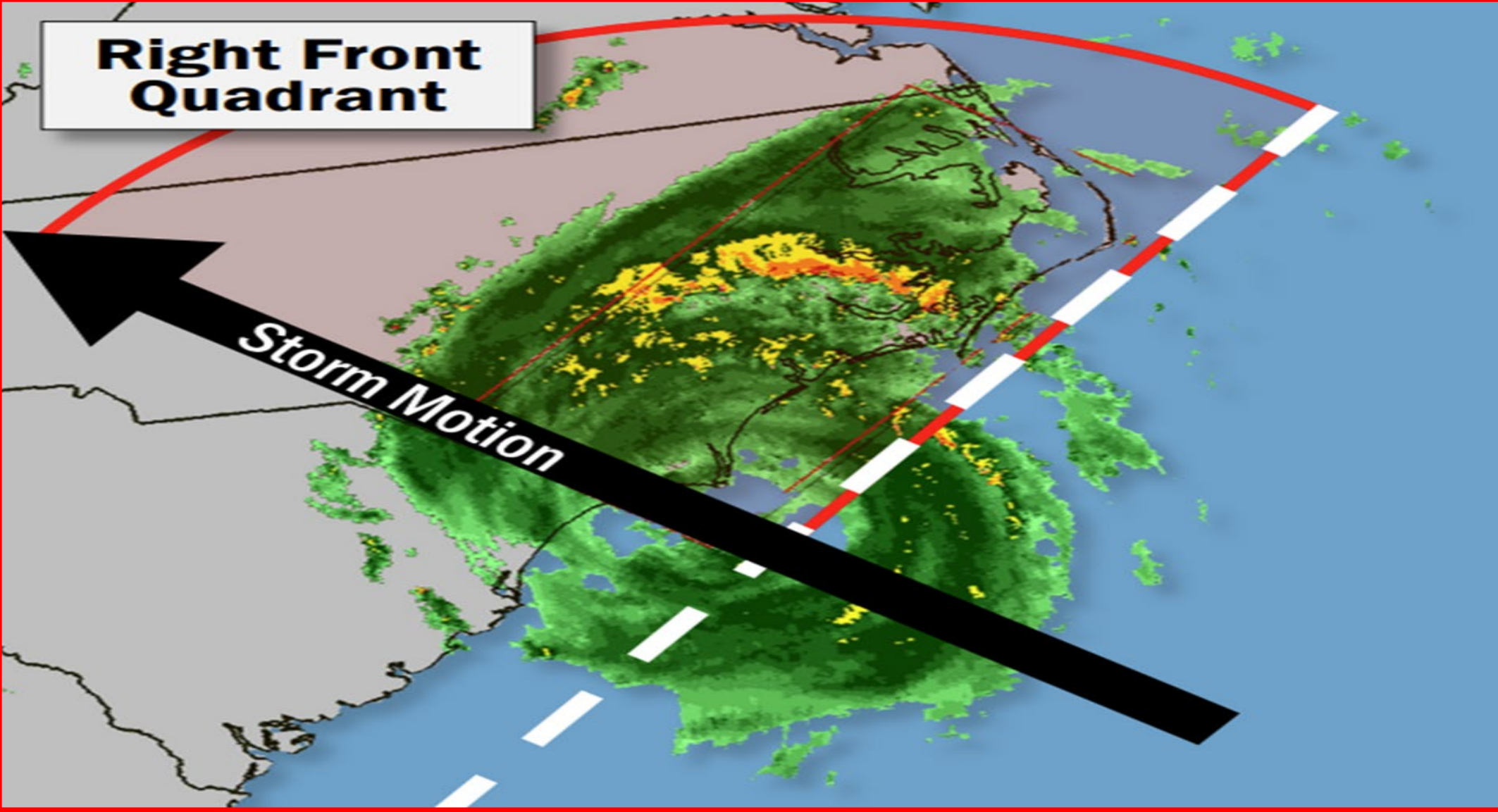
Factors That Influence Storm Surge

- 
- **Storm Intensity**
 - Stronger winds will produce a higher surge
 - **Size**
 - A larger storm will produce higher surge
 - ❖ Why? Winds are pushing on a larger area of the ocean and the storm will typically last longer
 - **Storm Forward Speed**
 - **Slower System**
 - ❖ A higher surge is produced inland because water has time to get into the bays, sounds and other enclosed bodies of water
 - **Faster System**
 - ❖ A higher surge is produced on the open coast-Tybee Island and other coastal areas
 - **Angle of Approach**
- 
- 
- 
- 



**Right Front
Quadrant**

Storm Motion



Gone with the WIND

- Wind is a large hazard in Chatham County because of our extensive tree canopy
- Downed trees and limbs can cause devastating damage to homes, vehicles and infrastructure within Chatham County





Excessive Rainfall

- For storms moving 6-30 mph, the average rainfall is 5 to 10 inches
- For storms moving SLOWER than 6 mph, the average rainfall is usually above 15 inches
- The heaviest rainfall with tropical systems usually falls along or near the coast and typically occurs slightly to the right of the track of the storm





National Hurricane Center's Cone of Uncertainty



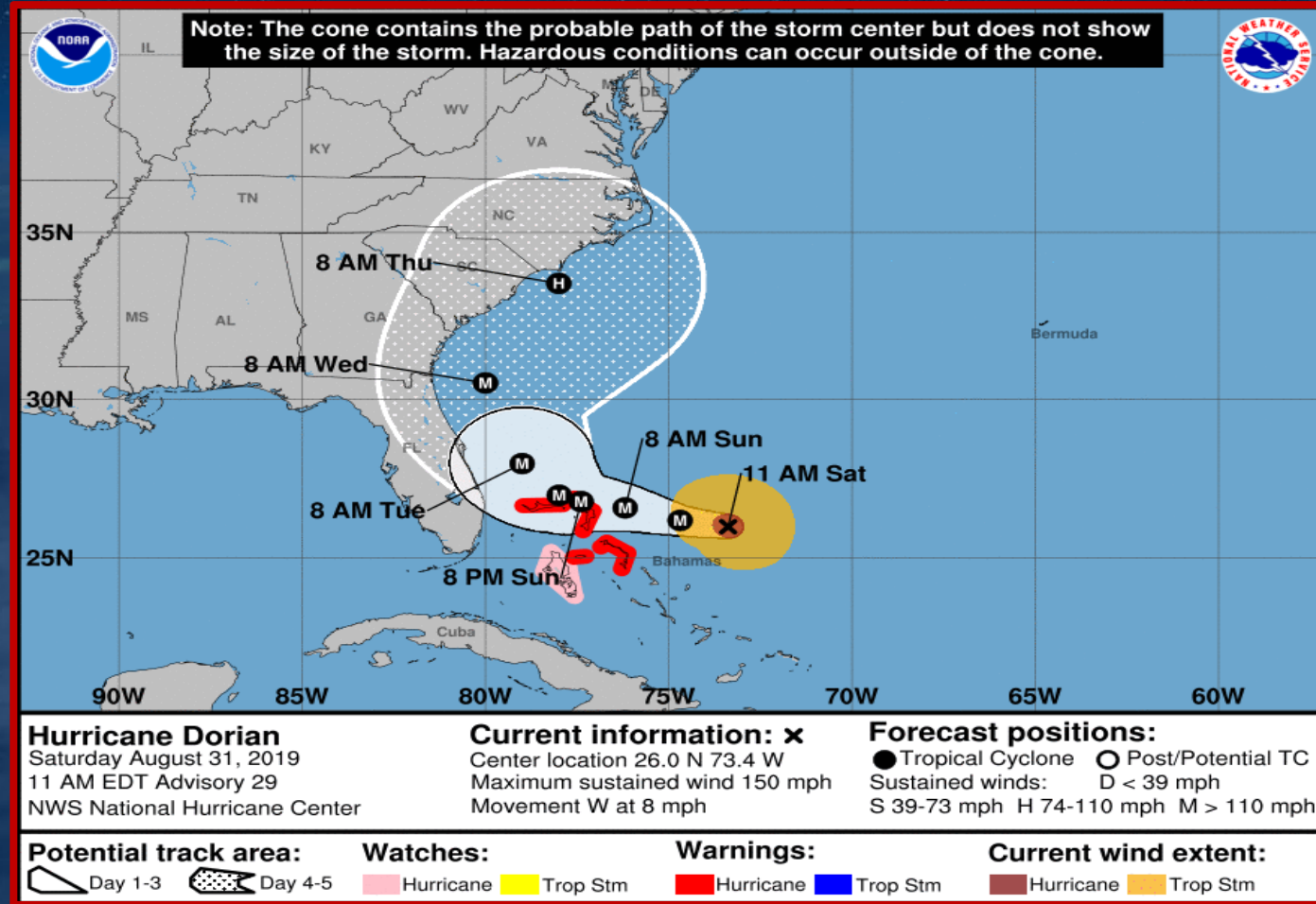
The More You Know!

- Approximately 60% of the time, the storm's eye will fall SOMEWHERE inside that cone
- IMPACTS can and WILL extend beyond the cone



What it DOES tell you:

- This ONLY tells you where the EYE OF THE STORM MAY GO
- The forward speed and direction of the storm, at that moment in time
- Current Watches and Warnings





How to Stay Informed

- CEMA Alerts
 - Text **CEMA** to 77295
- CEMA's website-
ChathamEmergency.org
- Disaster website-
ready.chathamcountyga.gov
- Social Media
 - @ChathamEMA
 - Be sure they are official sites!
 - Don't create OR share misinformation



Prepare Your Family

- Develop an Evacuation Plan
 - Chatham County resident? You NEED an evacuation plan!
 - Destination could vary on the storm
 - Run from the water/ Hide from the wind
- Create a Communication Plan
 - Text messages are more reliable when systems are overwhelmed
- Assemble Disaster Supplies
 - Staying at home
 - Evacuating the community



Home Emergency Kit



- Water
- Non-Perishable Food
- Manual Can Opener
- Flashlight(s)
- Extra Batteries
- Duct Tape
- Lighter and matches
- Evacuation Kit!
- First aid kit
- Work gloves
- Portable Device
Charger
- Entertainment Options
(Adults & Kids)
- Comfort Items
- **Extra cash**
- Paper Products
(napkins, plates, etc)
- Hand Sanitizer
- Weather Radio!
- Whistle
- Local Map (Printed)
- Personal Hygiene
Items (Extra Supplies)



Evacuation Emergency Kit



- Quick Access/Storage
 - 5-gallon bucket
- Plan for at least 3-5 days
 - Water (one gallon/person/day)
 - Non-perishable food (Manual Can Opener)
 - Important medication/prescriptions
- Essential Devices and Chargers
 - Hard drives, computers, tablets, etc.
- Copies of important documents
 - Insurance, Birth Certificate(s), Passport(s)
- Hygiene Items
- **Extra Cash**, if possible



Flood Insurance

- No home is completely safe from flooding
- 1 inch of water can cost more than \$25,000 in damages
- Homeowners and/or Renters insurance **DOES NOT** cover flooding!
- Flood insurance is the **ONLY** way to help protect your home and your things from flooding
- **DON'T DELAY!** Flood insurance takes 30 days to activate!
- No need to shop- National Flood Insurance Program sets the rate for all insurance companies
- You **DO NOT** have to be in a flood zone to get flood insurance!

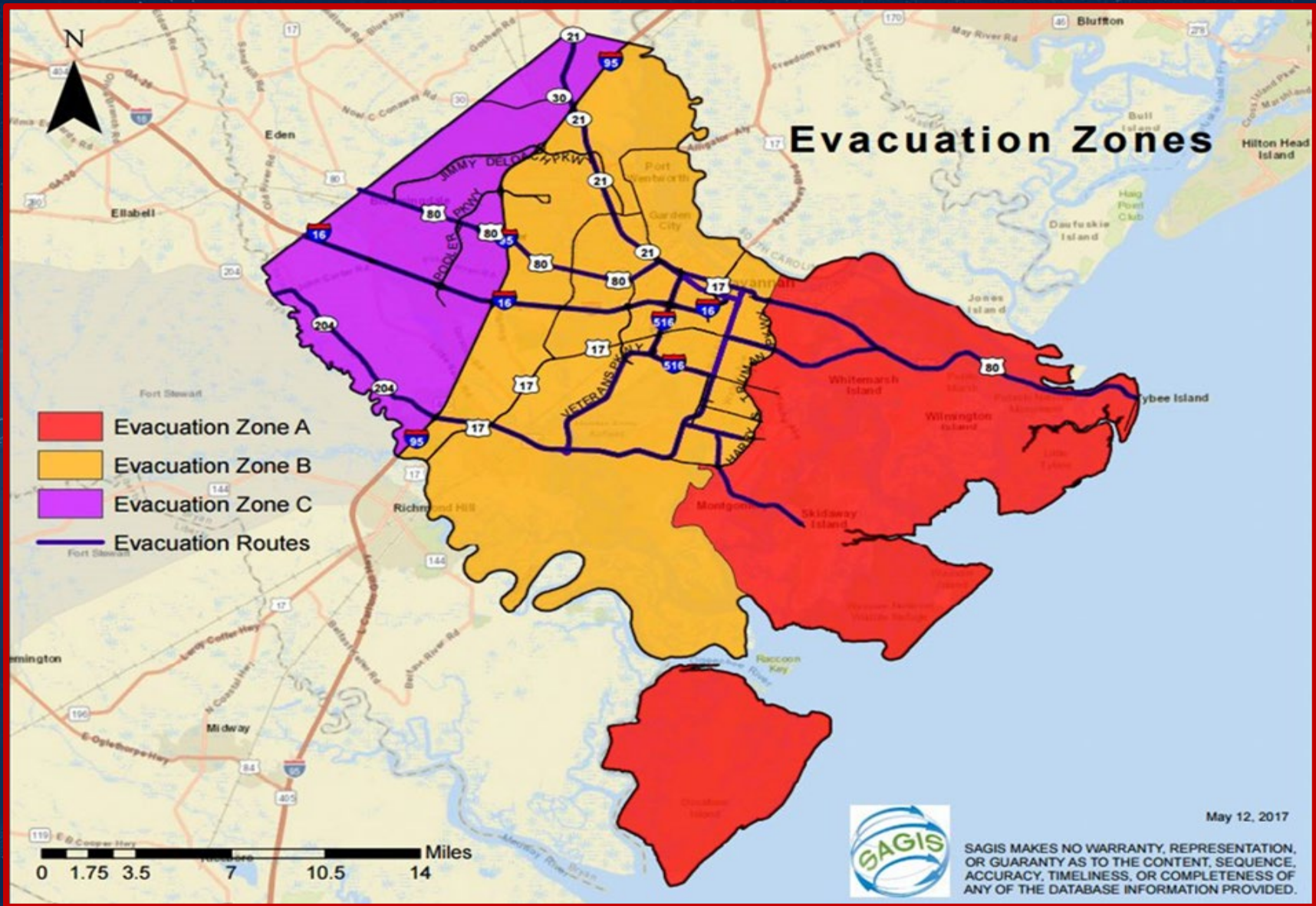


Insurance Check Up



- Know your Insurance Plan – during recovery for Debby and Helene, many residents were shocked with what their plan **DID NOT** cover!
- If your home is damaged, how will you explain everything that you own?
 - Take photos or video of the contents of your home!





<https://public.sagis.org/evaczones/>

Evacuation Terminology

- Evacuation Order
 - A general statement used to encourage residents to evacuate
- Mandatory Evacuation Order
 - An Executive Directive requiring all residents, visitors, businesses and anyone else in the target area to evacuate
 - **Personal discretion is NOT an option**

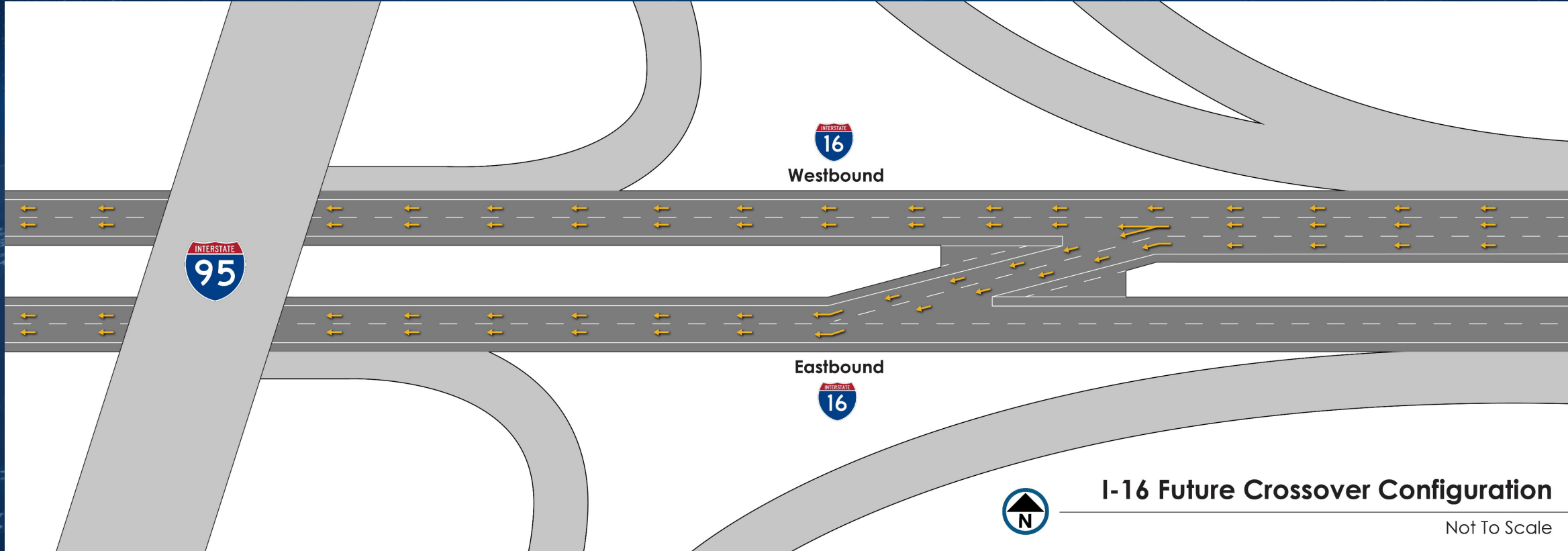




I-16 Contraflow

- All lanes of I-16 flow westward from Savannah to Dublin (125 miles)
- **Please Note:**
 - Normal access to surface roads in standard westward lanes
 - Only certain exits are open in the “new” westward lanes
 - Once you exit the contraflow lane, you will not be able to re-enter the contraflow lane
 - Exit 143 - SR 30 in Bryan County
 - Exit 116 - US 301 in Bulloch County
 - Exit 104 - SR 23/121 in Candler County
 - Exit 90 - US 1 in Emmanuel County
 - Exit 71 - SR 15 in Treutlen County
 - Exit 67 - SR 29 in Laurens County
 - Exit 51 - US 441 in Laurens County



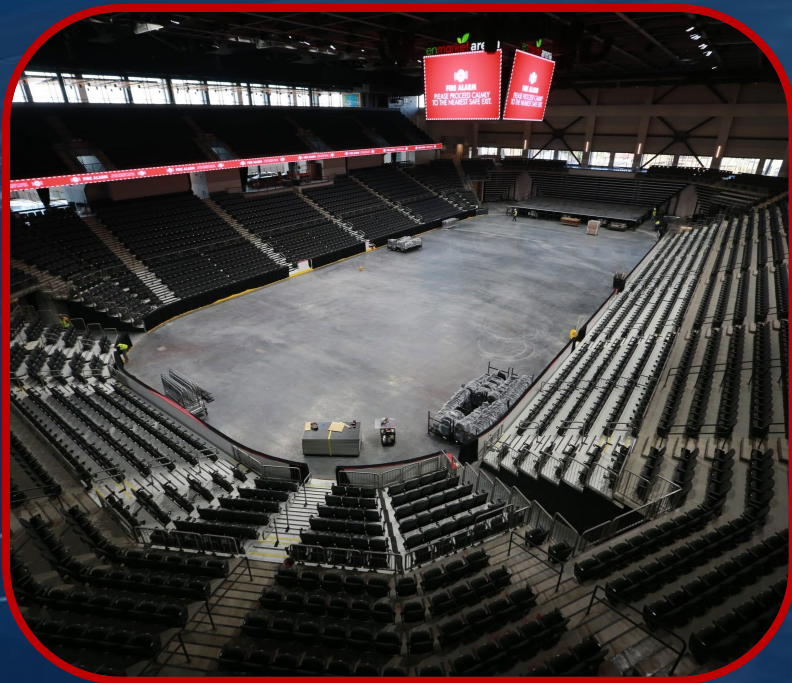


I-16 Future Crossover Configuration

Not To Scale



Evacuation Assembly Area (EAA)



- Getting to a public shelter:
 - Take any Chatham Area Transit (CAT) bus to the Enmarket Arena (**NEW** location)
 - Register onsite at the Evacuation Assembly Area (EAA)
 - Shuttle to a Macon-Bibb County shelter on a bus
- What you can bring:
 - One small/medium hand carry bag, per person
 - Pets will be accepted at the EAA and transported via an animal bus to an inland animal shelter



Evacuating Chatham County



- Evacuation Shelters
 - The Georgia Emergency Management and Homeland Security Agency (GEMA) has a list of available evacuation shelters open to the public
- Possible Shelter Locations
 - Appling County
 - Berrien County
 - Colquitt County
 - Cook County
 - Lowdnes County
 - Moscogee County
 - Richmond County
 - Sumter County
 - Thomas County
 - Wayne County



The Hurricane Registry

- Purpose
 - To provide residents who have functional, access and medical needs a means of safe evacuation.
- Who May Qualify
 - Residents with:
 - No other resources for evacuating
 - **Functional or Access Needs:** Individuals who need assistance to maintain independence in a shelter
 - **Medical Needs:** Individuals who require the support of trained medical professionals in a shelter setting
- For more information or to register call: **1-833-CHD-REGISTER**
(1-833-243-7344)



Evacuating with Animals

- Find a safe place for you and your pet(s)
 - Pre-identify locations, hotels, restaurants, etc. that will allow your pet to come along
 - BringFido.com
- Make a Disaster Kit for your pet

- | | |
|--|--|
| <ul style="list-style-type: none">• Medication and medical records• Food and water (with bowls)• A favorite toy or blanket• A current photo | <ul style="list-style-type: none">• Carriers for transporting• Cat litter and litter box• Your veterinarian's contact information• Leashes/harness/muzzle |
|--|--|



Talmadge Bridge **UPDATE**

- Georgia Department of Transportation (GDOT) has two new “Conditions” for the Talmadge Bridge beginning in 2026
- GDOT will no longer “close” the Talmadge Bridge during high wind events, but instead issue these conditions/advisories



Talmadge Bridge **UPDATE**

- Condition **YELLOW**:
 - National Weather Service predicts (or have reached) sustained winds of 30 mph.
 - GDOT will advise that high profile vehicles NOT use the bridge and that the public should use extreme caution if they decide to travel over the bridge.
- Condition **RED**:
 - National Weather Service predicts (or have reached) sustained winds of 40 mph.
 - These bridges are considered unsafe for public travel.
 - Law enforcement may not be present at the bridges due to unsafe conditions.
 - Anyone who drives over the bridge against the advisory is doing so at their own risk.



Re-Entry Planning

1. Render Safe Task Force
2. Life Safety Workforce
3. Essential Public and Private Sector Personnel
4. Local Residents, Property Owners, and Business Owners
5. Open to the public with limited access



Resources After A Storm

- Damage Assessment Teams
 - These are County or City Officials collecting information for potential assistance
 - Do not approach or interfere unless they have a question for you
- Volunteer Teams
 - Crisis Cleanup Hotline
 - Coastal Empire Disaster Recovery Committee (CEDRC)
- United Way Disaster Relief Fund
 - Activated for the first time in 2024 for Debby and Helene!



Resources After A Storm

- FEMA Assistance
 - Individual Assistance
 - Programs for the general public who have been impacted by a Presidentially Declared Disaster
 - NOT guaranteed!
 - Public Assistance
 - Programs for government and non-profit agencies
 - NOT for individuals, but instead for organizations
- Other Federal Assistance
 - Small Business Administration (SBA) Loans
 - Loans available to both small businesses and individuals following a disaster





2026

QUESTIONS?

